



CARDIFF'S HEALTH, SOCIAL CARE AND WELL BEING STRATEGY 2008-2011 CONSULTATION DOCUMENT STRATEGIC ENVIRONMENTAL ASSESSMENT

PURPOSE

The purpose of this report is to document the findings and the recommendations of the screening stage of the Strategic Environmental Assessment (SEA) of Cardiff's Health, Social Care and Well Being Strategy 2008-2011 Consultation Document. The screening took place on 25th January 2008.

INTRODUCTION

SEA is a process to ensure that significant environmental effects arising as a result of policies, plans and programmes are identified, assessed, mitigated, communicated to decision-makers, monitored and that opportunities for public involvement are provided. It is sometimes referred to as Strategic Environmental Impact Assessment. The specific term Strategic Environmental Assessment relates to European Union (EU) policy. SEA is an EU Regulation, and as such is mandatory.

The SEA screening constitutes one of several assessments undertaken in order to assess the impact of Cardiff's Health, Social Care and Well Being Strategy 2008-2011. The other assessments include Cardiff Council's Policy Integration Tool, an Equality Impact Assessment, and a Health Impact Assessment.

BACKGROUND

The SEA process is a method of ensuring that plans and programmes take into consideration the impact on the environment that they may cause. Strategic Environmental Assessment is a procedure comprising:

- Preparing an Environmental Report on the likely significant effects of the draft plan or programme;
- Carrying out consultation on the draft plan or programme and the accompanying Environmental Report;
- Taking into account the Environmental Report and the results of consultation in decision making; and
- Providing information when the plan or programme is adopted and showing how the results of the environmental assessment have been taken into account.

Prior to carrying out the SEA a screening of the plan or programme should take place to ascertain if it falls under the SEA legislation.

Cardiff's Health, Social Care and Well Being Strategy 2008-2011 comprises one of the four statutory documents to be written by the Local Authority and is a joint statutory requirement of the Local Authority and the Local Health Board. It is an over-arching strategy which will have far reaching implications as a result of its aim to "significantly improve the health and well being of the citizens of Cardiff and to deliver high quality, citizen focused services" (Cardiff's Health, Social Care and Well Being Strategy 2008-2011).

In light of this, an SEA screening was undertaken on the Strategy in order to determine if a full assessment was required.

PROCESS

As part of the process the Health, Social Care & Well Being Strategy consultation document was circulated to Cadw, the Countryside Council for Wales (CCW) and Environment Agency Wales (EAW) as statutory consultees prior to a meeting of partner representatives for comment.

A group of partner representatives were assembled to undertake the screening part of the SEA (attendees listed in attached minutes, Appendix 1). The group were required to reach a consensus on a list of questions within a flow chart diagram - 'Application of the SEA Directive – what plans and programmes are caught'. This diagram is designed to ascertain if a full SEA would be required (please refer to Appendix 2).

RESULTS OF SCREENING TOOL

Below is a summary of the discussions during the meeting, highlighting the decisions made through each of the questions of the flow chart:

A brief overview of the situation was given, outlining the need to screen the strategy to establish whether an assessment is required in order to comply with the environmental assessment of plans and programmes regulations 2004 No.1656 (W170).

The flow chart was then used and the following questions were addressed according to the answers made:

Q1) Is the plan or programme subject to preparation or adoption by an authority at national, regional or local level OR prepared by an authority for adoption through legislative procedure by Parliament or Government?

As the Health, Social Care and Well Being Strategy (HSC&WBS) will be prepared and adopted by Cardiff Health Alliance (Cardiff Council and partner organisations) the answer to this question was yes.

Q2) Is the plan or programme required by legislative, regulatory or administrative provisions?

The answer to this question was yes as the Local Health Board and Local Authority have a joint statutory duty to prepare a HSC&WBS under the National Health Service Act (Wales) 2006. Additionally the HSC&WBS is one of four plans that Welsh Local Authorities have a statutory duty to prepare.

Q3) Did the preparation of the plan or programme begin on or after 21/07/2004?

It was agreed that the first formal preparatory act of the HSC&WBS coincided with the publication of the Welsh Assembly Governments guidance on preparing Health, Social Care and Well Being Strategies which occurred on 01/04/07. Therefore the first formal preparatory act occurred after the 21/07/04.

Q4) Is the plan or programme for agriculture, forestry, fisheries, energy, industry, transport, waste management, water management, tele-communications, tourism, town and country planning or land use AND does the plan or programme set the framework for future development consent of projects listed in Annex I or II of Council Directive 97/11/EC (amending Council Directive 85/337/EEC)?

The HSC&WBS identifies the key challenges and priorities for Cardiff and how the relevant organisations plan to tackle them. The HSC&WBS does not encompass any of the activities listed above and will not set the consent for the types of projects listed in Council Directive 97/11/EC.

Q5) Is the plan or programme in view of its likely effect on sites, determined to require an assessment in accordance with the Habitat Directive?

There are two European designated protected areas in Cardiff, the Severn Estuary Special Protection Area (SPA) and the Beachwood Special Area of Conservation (SAC) (around

Castell Coch). The HSC&WBS may have a negligible, indirect effect on the Severn Estuary. As such it was agreed that the HSC&WBS would not require an assessment in accordance with the habitat regulations.

Q7) Does the plan or programme set the framework for future development consent of projects?

The HSC&WBS is an umbrella strategy in that it will pull together strands from different partner organisations and policy areas. The HSC&WBS identifies the key challenges and priorities for Cardiff and how the relevant organisations plan to tackle them. Therefore the HSC&WBS will not set the framework for future development consent of projects.

The provisional decision reached based on the criteria above (Q2 - Q7) was that an environmental assessment was not required. However, the decision as to whether an SEA was required was still subject to consultation with statutory consultees. The views of the consultees were as follows:

- **Cadw** - Cadw did not submit a response
- **Countyside Council for Wales (CCW)** - The views of CCW were of limited use as there were not many firm conclusions. The conclusions and decisions reached in this meeting were still valid having considered the comments of CCW.
- **Environment Agency Wales (EAW)** - EAW did not submit a response

CONCLUSIONS

After considering the comments from the statutory consultees it was felt that the conclusions reached as a result of the screening process were still valid and that the HSC&WBS was given a 'green' classification. Therefore, in conclusion, the HSC&WBS did not require an Environmental Assessment.

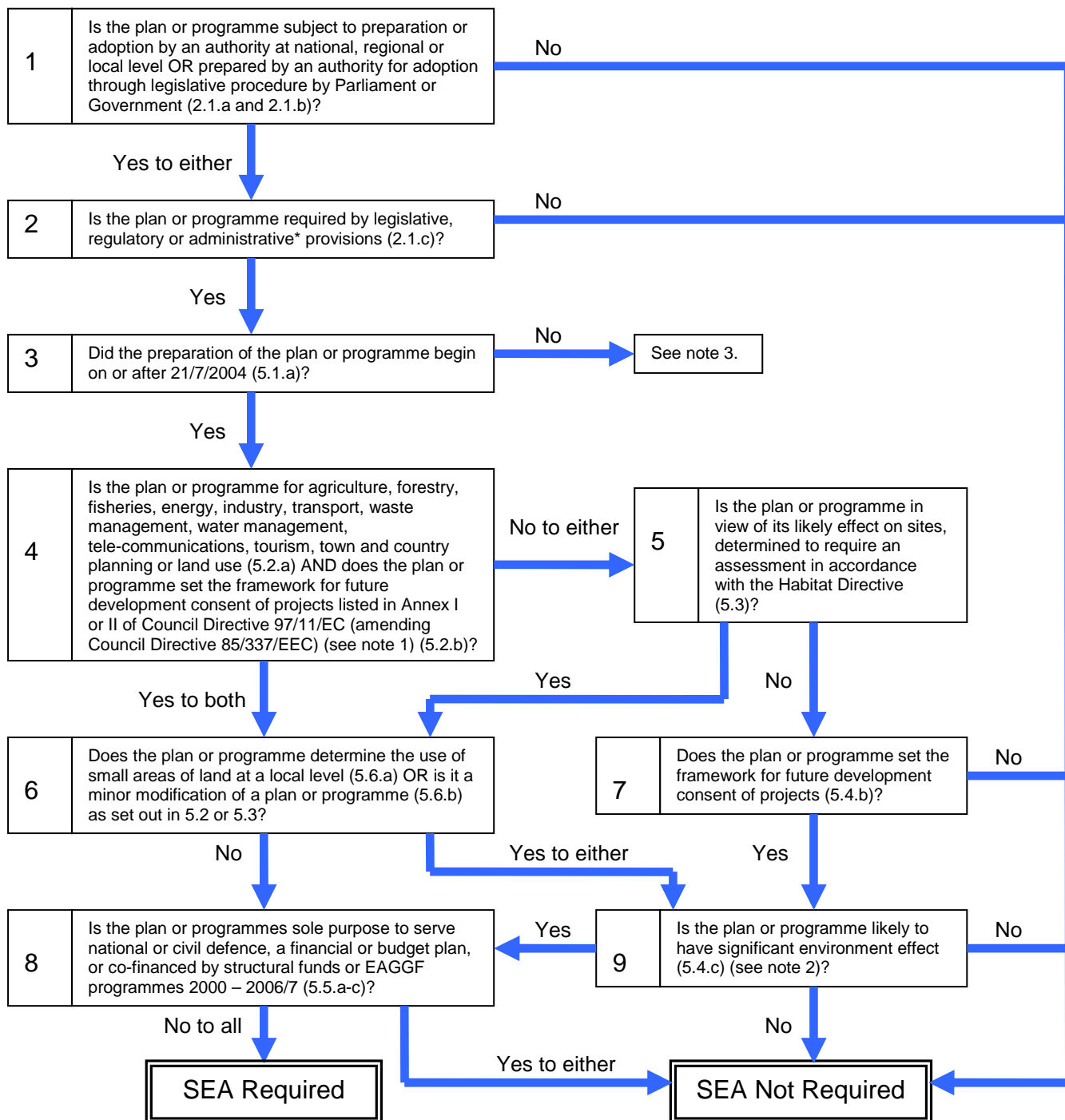
SCREENING MEETING TO ESTABLISH WHETHER THE HEALTH, SOCIAL CARE AND WELL BEING STRATEGY WILL REQUIRE AN ENVIRONMENTAL ASSESSMENT UNDER THE ENVIRONMENTAL ASSESSMENT OF PLANS AND PROGRAMMES REGULATIONS 2004 NO.1656 (W170)

County Hall on Friday 25th January 2008

Name	Organisation
Liz Lambert (Chair)	Group Leader, Sustainable Development, Cardiff Council,
James Clemence	Group Leader, Countryside, Cardiff Council
Polly Ellis	Solicitor, Property and Development, Cardiff Council,
Stuart Williams	Group Leader, Policy, Cardiff Council
Chris Jenkins	Health Partnership Manager, Cardiff Council
Bronia Bendall	Health & Well Being Co-ordinator, Cardiff Council
Sue Toner	Cardiff Local Public Health Team, Cardiff Local Health Board

The application of the SEA Directive - what plans and programmes are caught.

This diagram is intended as a guide to establish whether specific plans and programmes will be subject to environmental assessment under the Strategic Environmental Assessment Regulations. The information below is taken from the Environmental Assessment of Plans and Programmes Regulations 2004 (Welsh Statutory Instrument 2004 No.1656) and A Practical Guide to the Strategic Environmental Assessment Directive produced by the ODPM, Scottish Executive, WAG and Department of the Environment.



* Characteristics of “administrative provisions” are likely to be that they are publicly available, prepared in a formal way, probably involving consultation with interested parties. The administrative provision must have sufficient formality such that it counts as a “provision” and it must also use language that plainly requires rather than just encourages a plan or programme to be prepared.