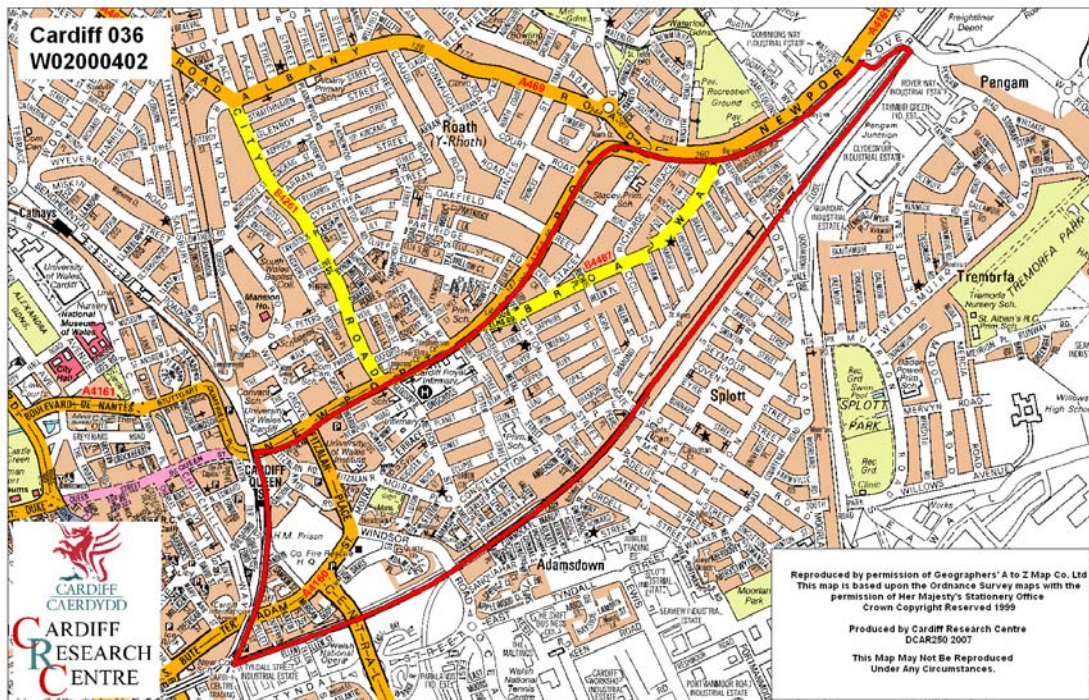


Adamsdown Middle Super Output Area

A comparison of Population Age Structure's for Mid 2004 from the National Statistics experimental Mid Year Estimate and the National Health Service Administrative Records (NHSAR)

Figure: Adamsdown MSA (Cardiff Central Locality)



Disclosure Control: Due to a requirement to observe the Registrar General's disclosure control protocols for experimental and official Mid Year Estimates of population it has been necessary to round population figures provided in this profile to the nearest 100 persons. Due to the danger of disclosure by difference the NHSAR population figures in this brief have also been rounded to the nearest 100 persons. For both datasets, when the population estimate was less than 50 persons, the value of 50 has been used. However, it is important to note that all graphics and the percentages presented in this profile have been produced using raw un-rounded estimates. The difference between NHSAR and MYE population estimates are also presented here in their un-rounded raw format.

Summary Key Statistics

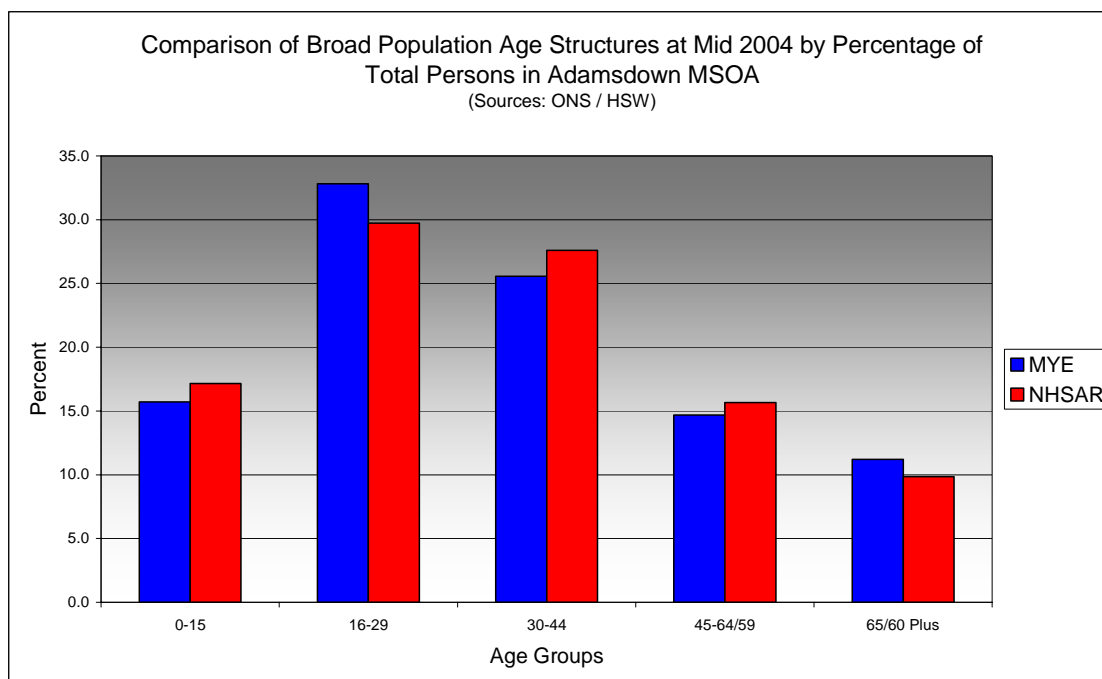
- In Adamsdown total NHSAR population at Mid 2004 was 8.3% (approximately 700 persons) higher than the experimental Mid Year Estimate.
- Total male NHSAR population was 4.7% higher, while total female population was 12.8% higher.
- NHSAR population counts showed the greatest variance from the Experimental MYEs in the following age groups: 0 to 4 years 29.3% higher, 35 to 39 years 26.3% higher.
- Adamsdown is ranked 42nd (MYE) and 41st (NHSAR) out of 47 MSOAs in Cardiff for it's total dependency ratio.
- Within the Cardiff Central locality Adamsdown is ranked 7th (MYE & NHSAR) out of 11 MSOAs for it's total dependency ratio.
- Adamsdown is ranked 22nd (MYE) and 15th (NHSAR) out of 47 MSOAs in Cardiff for the total number of younger dependents aged 0 to 14.
- Within it's locality Adamsdown is ranked 3rd (MYE & NHSAR) out of 11 MSOAs for the total number of younger dependents aged 0 to 14..
- Adamsdown is ranked 28th (MYE) and 34th (NHSAR) out of 47 MSOAs for the total number of older dependents aged 65 plus.
- Within it's locality Adamsdown is ranked 5th (MYE) and 6th (NHSAR) out of 11 MSOAs for the total number of older dependents aged 65 plus.
- The majority of dependent age groups (0 to 14 + 65 and over) are young dependents aged 0 to 14 representing 60.3% (MYE) and 65.5% (NHSAR) of total dependents.

| Dependency Ratios at Mid 2004 for Adamsdown MSOA (Sources: Derived from Data Supplied by ONS & HSW) | | |
|---|------------|--------------|
| | MYE | NHSAR |
| Aged 0 - 14 | 1,200 | 1,500 |
| Aged 65 Plus | 800 | 800 |
| Total Dependents | 2,100 | 2,300 |
| Aged 15 - 64 | 6,300 | 6,800 |
| Total Persons | 8,400 | 9,100 |
| Adamsdown Dependency Ratio | 0.33 | 0.33 |
| Locality Dependency Ratio | 0.33 | 0.30 |
| Cardiff Dependency Ratio | 0.47 | 0.43 |
| Wales Dependency Ratio | 0.57 | 0.52 |

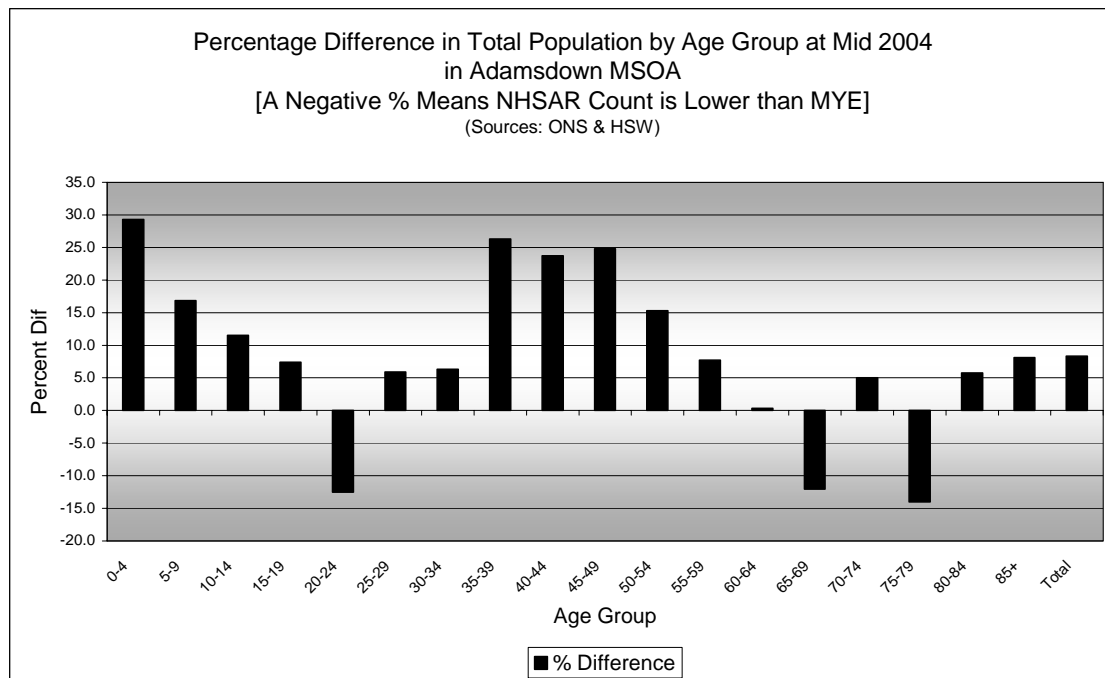
Broad Age Group Comparisons

| Comparison of Population Sources by Broad Age Group for Mid 2004 in Adamsdown MSOA | | | | | | |
|--|-------|-------|-------|----------|------------|-------|
| | 0-15 | 16-29 | 30-44 | 45-64/59 | 65/60 Plus | Total |
| MYE | 1,300 | 2,800 | 2,100 | 1,200 | 900 | 8,400 |
| NHSAR | 1,600 | 2,700 | 2,500 | 1,400 | 900 | 9,100 |
| Difference # | 240 | -51 | 364 | 193 | -47 | 699 |
| Difference % | 18.2 | -1.8 | 16.9 | 15.7 | -5.0 | 8.3 |

| Comparison of Broad Population Age Structures for Mid 2004 by Percentage of Total Population in Adamsdown MSOA | | | | | | |
|--|------|-------|-------|----------|------------|-------|
| | 0-15 | 16-29 | 30-44 | 45-64/59 | 65/60 Plus | Total |
| MYE | 15.7 | 32.8 | 25.6 | 14.7 | 11.2 | 100.0 |
| NHSAR | 17.2 | 29.7 | 27.6 | 15.7 | 9.8 | 100.0 |

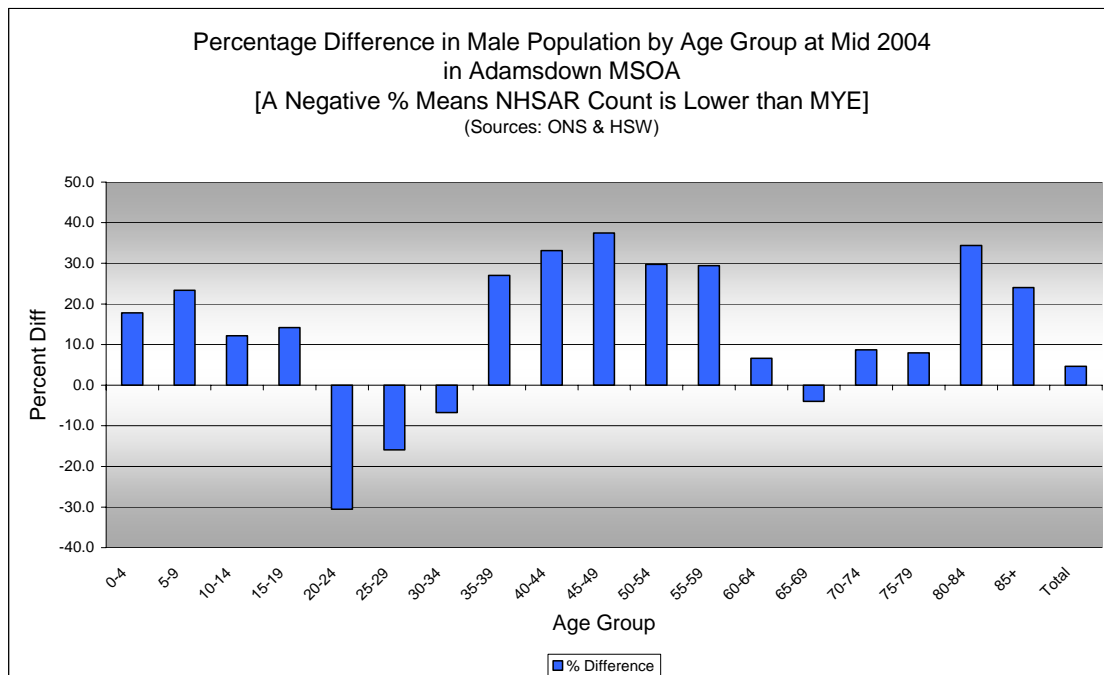


Quinary Age Group Comparisons – 2004 NHSAR Minus MYE



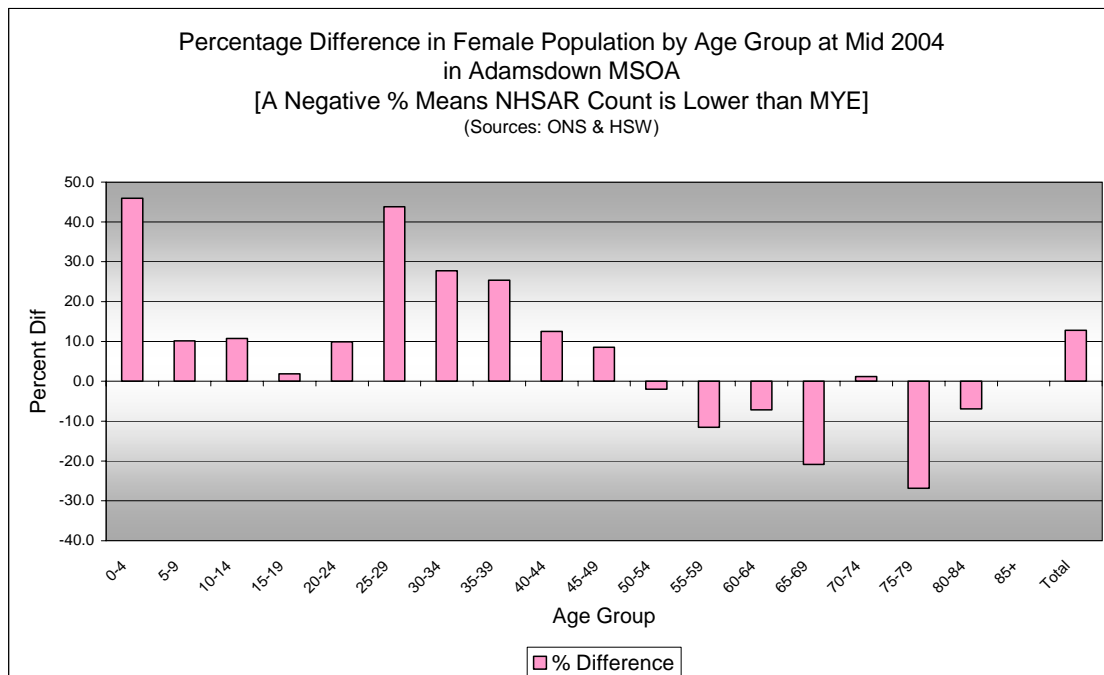
Comparison of Total Population by Age Group at Mid 2004 in MSOA
[Difference = NHSAR Minus MYE]
(Sources: ONS & HSW)

| Age | Persons (MYE) | Persons (NHSAR) | # Difference | % Difference |
|--------------|---------------|-----------------|--------------|--------------|
| 0-4 | 400 | 500 | 114 | 29.3 |
| 5-9 | 400 | 500 | 71 | 16.9 |
| 10-14 | 400 | 500 | 50 | 11.5 |
| 15-19 | 500 | 500 | 36 | 7.4 |
| 20-24 | 1,200 | 1,100 | -150 | -12.5 |
| 25-29 | 1,200 | 1,200 | 68 | 5.9 |
| 30-34 | 900 | 1,000 | 59 | 6.3 |
| 35-39 | 700 | 800 | 172 | 26.3 |
| 40-44 | 600 | 700 | 133 | 23.7 |
| 45-49 | 400 | 500 | 107 | 24.8 |
| 50-54 | 300 | 400 | 52 | 15.3 |
| 55-59 | 300 | 300 | 24 | 7.7 |
| 60-64 | 300 | 300 | 1 | 0.4 |
| 65-69 | 300 | 300 | -35 | -12.1 |
| 70-74 | 200 | 200 | 9 | 5.0 |
| 75-79 | 200 | 100 | -24 | -14.0 |
| 80-84 | 100 | 100 | 6 | 5.8 |
| 85+ | 100 | 100 | 6 | 8.1 |
| Total | 8,400 | 9,100 | 699 | 8.3 |



Comparison of Male Population by Age Group at Mid 2004 in MSOA
[Difference = NHSAR Minus MYE]
(Sources: ONS & HSW)

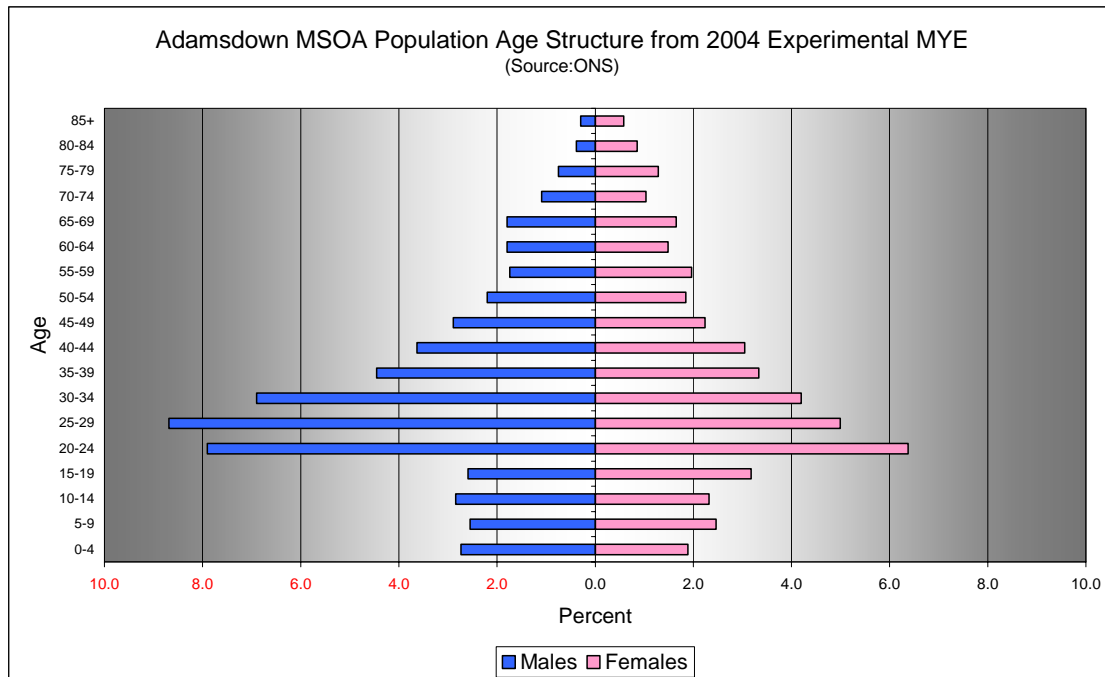
| Age | Males (MYE) | Males (NHSAR) | # Difference | % Difference |
|--------------|--------------|---------------|--------------|--------------|
| 0-4 | 200 | 300 | 41 | 17.8 |
| 5-9 | 200 | 300 | 50 | 23.4 |
| 10-14 | 200 | 300 | 29 | 12.1 |
| 15-19 | 200 | 200 | 31 | 14.2 |
| 20-24 | 700 | 500 | -203 | -30.6 |
| 25-29 | 700 | 600 | -116 | -15.9 |
| 30-34 | 600 | 500 | -39 | -6.7 |
| 35-39 | 400 | 500 | 101 | 27.0 |
| 40-44 | 300 | 400 | 101 | 33.1 |
| 45-49 | 200 | 300 | 91 | 37.4 |
| 50-54 | 200 | 200 | 55 | 29.7 |
| 55-59 | 100 | 200 | 43 | 29.5 |
| 60-64 | 200 | 200 | 10 | 6.6 |
| 65-69 | 200 | 100 | -6 | -4.0 |
| 70-74 | 100 | 100 | 8 | 8.7 |
| 75-79 | 100 | 100 | 5 | 7.9 |
| 80-84 | 50 | 50 | 11 | 34.4 |
| 85+ | 50 | 50 | 6 | 24.0 |
| Total | 4,600 | 4,900 | 218 | 4.7 |



Comparison of Female Population by Age Group at Mid 2004 in MSOA
[Difference = NHSAR Minus MYE]
(Sources: ONS & HSW)

| Age | Females (MYE) | Females (NHSAR) | # Difference | % Difference |
|--------------|---------------|-----------------|--------------|--------------|
| 0-4 | 200 | 200 | 73 | 45.9 |
| 5-9 | 200 | 200 | 21 | 10.1 |
| 10-14 | 200 | 200 | 21 | 10.8 |
| 15-19 | 300 | 300 | 5 | 1.9 |
| 20-24 | 500 | 600 | 53 | 9.9 |
| 25-29 | 400 | 600 | 184 | 43.8 |
| 30-34 | 400 | 500 | 98 | 27.8 |
| 35-39 | 300 | 400 | 71 | 25.4 |
| 40-44 | 300 | 300 | 32 | 12.5 |
| 45-49 | 200 | 200 | 16 | 8.5 |
| 50-54 | 200 | 200 | -3 | -1.9 |
| 55-59 | 200 | 100 | -19 | -11.5 |
| 60-64 | 100 | 100 | -9 | -7.2 |
| 65-69 | 100 | 100 | -29 | -20.9 |
| 70-74 | 100 | 100 | 1 | 1.1 |
| 75-79 | 100 | 100 | -29 | -26.9 |
| 80-84 | 100 | 100 | -5 | -6.9 |
| 85+ | 50 | 50 | 0 | 0.0 |
| Total | 3,800 | 4,200 | 481 | 12.8 |

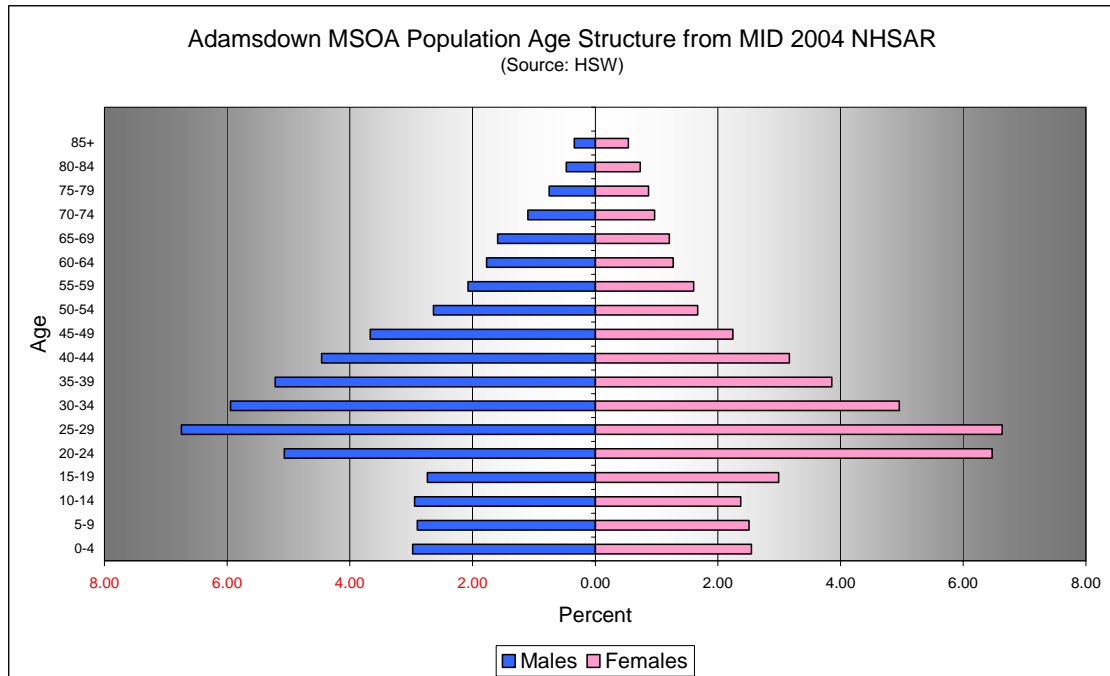
Quinary Population Age Structure - 2004 MYE



| Adamsdown MSOA Population Age Structure 2004 MYE (Source: ONS) | | | |
|---|--------------|--------------|--------------|
| Age | Males | Females | Persons |
| 0-4 | 200 | 200 | 400 |
| 5-9 | 200 | 200 | 400 |
| 10-14 | 200 | 200 | 400 |
| 15-19 | 200 | 300 | 500 |
| 20-24 | 700 | 500 | 1,200 |
| 25-29 | 700 | 400 | 1,200 |
| 30-34 | 600 | 400 | 900 |
| 35-39 | 400 | 300 | 700 |
| 40-44 | 300 | 300 | 600 |
| 45-49 | 200 | 200 | 400 |
| 50-54 | 200 | 200 | 300 |
| 55-59 | 100 | 200 | 300 |
| 60-64 | 200 | 100 | 300 |
| 65-69 | 200 | 100 | 300 |
| 70-74 | 100 | 100 | 200 |
| 75-79 | 100 | 100 | 200 |
| 80-84 | 50 | 100 | 100 |
| 85+ | 50 | 50 | 100 |
| Total | 4,600 | 3,800 | 8,400 |

| Adamsdown MSOA Population Age Structure 2004 MYE - Percentage of Total Persons (Source: ONS) | | | |
|---|-------------|-------------|--------------|
| Age | Males | Females | Persons |
| 0-4 | 2.7 | 1.9 | 4.6 |
| 5-9 | 2.5 | 2.5 | 5.0 |
| 10-14 | 2.8 | 2.3 | 5.2 |
| 15-19 | 2.6 | 3.2 | 5.8 |
| 20-24 | 7.9 | 6.4 | 14.3 |
| 25-29 | 8.7 | 5.0 | 13.7 |
| 30-34 | 6.9 | 4.2 | 11.1 |
| 35-39 | 4.5 | 3.3 | 7.8 |
| 40-44 | 3.6 | 3.0 | 6.7 |
| 45-49 | 2.9 | 2.2 | 5.1 |
| 50-54 | 2.2 | 1.8 | 4.0 |
| 55-59 | 1.7 | 2.0 | 3.7 |
| 60-64 | 1.8 | 1.5 | 3.3 |
| 65-69 | 1.8 | 1.7 | 3.5 |
| 70-74 | 1.1 | 1.0 | 2.1 |
| 75-79 | 0.7 | 1.3 | 2.0 |
| 80-84 | 0.4 | 0.9 | 1.2 |
| 85+ | 0.3 | 0.6 | 0.9 |
| Total | 55.2 | 44.8 | 100.0 |

Quinary Population Age Structure Mid 2004 NHSAR



| Adamsdown MSOA Population Age Structure - NHSAR Mid 2004 (Source: HSW) | | | |
|---|--------------|--------------|--------------|
| Age | Males | Females | Persons |
| 0-4 | 300 | 200 | 500 |
| 5-9 | 300 | 200 | 500 |
| 10-14 | 300 | 200 | 500 |
| 15-19 | 200 | 300 | 500 |
| 20-24 | 500 | 600 | 1,100 |
| 25-29 | 600 | 600 | 1,200 |
| 30-34 | 500 | 500 | 1,000 |
| 35-39 | 500 | 400 | 800 |
| 40-44 | 400 | 300 | 700 |
| 45-49 | 300 | 200 | 500 |
| 50-54 | 200 | 200 | 400 |
| 55-59 | 200 | 100 | 300 |
| 60-64 | 200 | 100 | 300 |
| 65-69 | 100 | 100 | 300 |
| 70-74 | 100 | 100 | 200 |
| 75-79 | 100 | 100 | 100 |
| 80-84 | 50 | 100 | 100 |
| 85+ | 50 | 50 | 100 |
| Total | 4,900 | 4,200 | 9,100 |

| Adamsdown MSOA Population Age Structure - NHSAR Mid 2004 % of Total Persons (Source: HSW) | | | |
|---|-------------|-------------|--------------|
| Age | Males | Females | Persons |
| 0-4 | 3.0 | 2.5 | 5.5 |
| 5-9 | 2.9 | 2.5 | 5.4 |
| 10-14 | 2.9 | 2.4 | 5.3 |
| 15-19 | 2.7 | 3.0 | 5.7 |
| 20-24 | 5.1 | 6.5 | 11.5 |
| 25-29 | 6.7 | 6.6 | 13.4 |
| 30-34 | 5.9 | 5.0 | 10.9 |
| 35-39 | 5.2 | 3.9 | 9.1 |
| 40-44 | 4.5 | 3.2 | 7.6 |
| 45-49 | 3.7 | 2.2 | 5.9 |
| 50-54 | 2.6 | 1.7 | 4.3 |
| 55-59 | 2.1 | 1.6 | 3.7 |
| 60-64 | 1.8 | 1.3 | 3.0 |
| 65-69 | 1.6 | 1.2 | 2.8 |
| 70-74 | 1.1 | 1.0 | 2.1 |
| 75-79 | 0.7 | 0.9 | 1.6 |
| 80-84 | 0.5 | 0.7 | 1.2 |
| 85+ | 0.3 | 0.5 | 0.9 |
| Total | 53.4 | 46.6 | 100.0 |