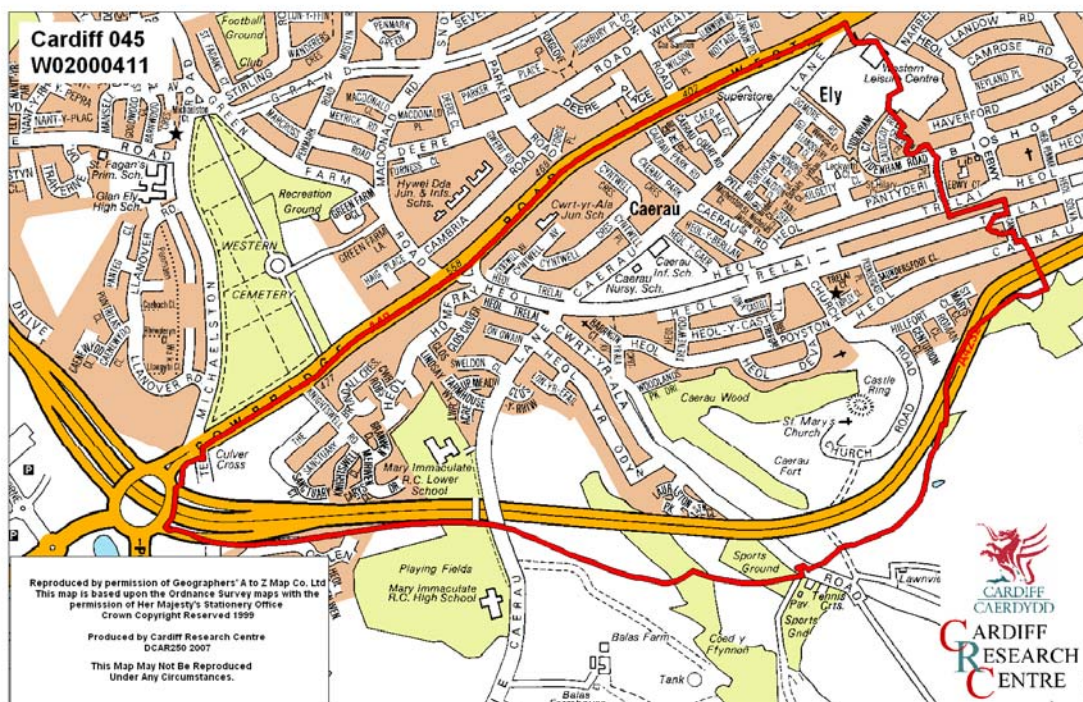


## Caerau Middle Super Output Area

A comparison of Population Age Structure's for Mid 2004 from the National Statistics experimental Mid Year Estimate and the National Health Service Administrative Records (NHSAR)

Figure: Caerau MSOA (Cardiff West Locality)



**Disclosure Control:** Due to a requirement to observe the Registrar General's disclosure control protocols for experimental and official Mid Year Estimates of population it has been necessary to round population figures provided in this profile to the nearest 100 persons. Due to the danger of disclosure by difference the NHSAR population figures in this brief have also been rounded to the nearest 100 persons. For both datasets, when the population estimate was less than 50 persons, the value of 50 has been used. However, it is important to note that all graphics and the percentages presented in this profile have been produced using raw un-rounded estimates. The difference between NHSAR and MYE population estimates are also presented here in their un-rounded raw format.

## Summary Key Statistics

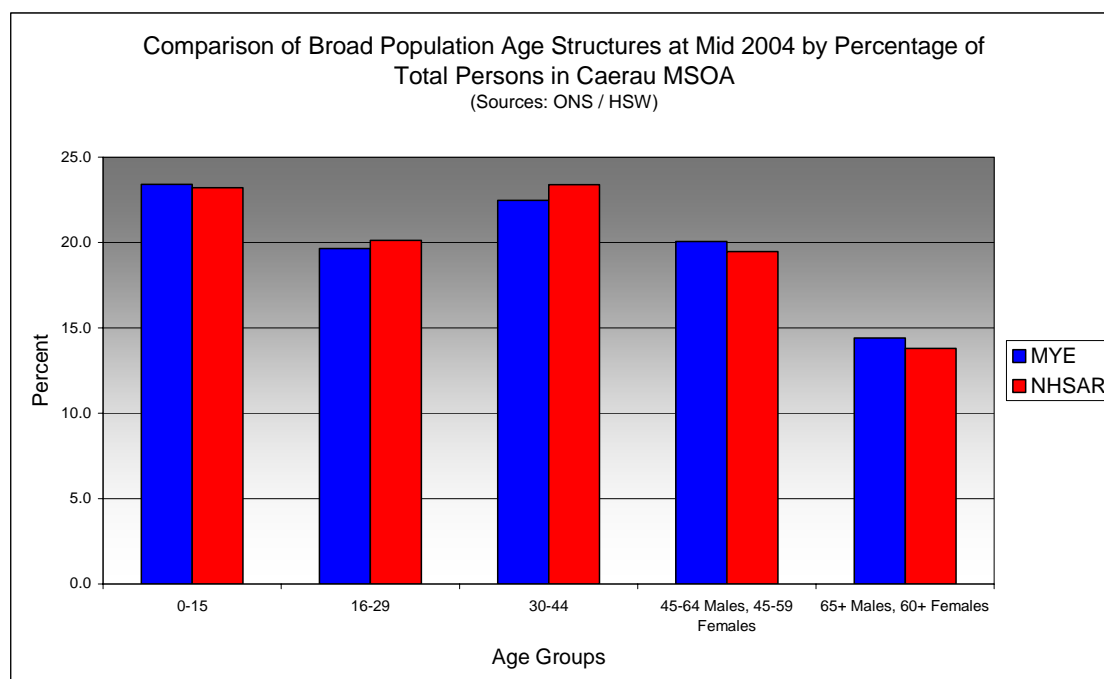
- In Caerau total NHSAR population at Mid 2004 was 5.1% (approximately 300 persons) higher than the experimental Mid Year Estimate.
- Total male NHSAR population was 6.5% higher, while total female population was 3.9% higher.
- NHSAR population counts showed the greatest variance from the Experimental MYEs in the following age groups: 20 to 24 years 20.1% higher & 10 to 14 years 10.9% higher.
- Caerau is ranked 25<sup>th</sup> (MYE) and 23<sup>rd</sup> (NHSAR) out of 47 MSOAs in Cardiff for it's total dependency ratio.
- Within the Cardiff West locality Caerau is ranked 7<sup>th</sup> (MYE & NHSAR) out of 13 MSOAs for it's total dependency ratio.
- Caerau is ranked 16<sup>th</sup> (MYE) and 17<sup>th</sup> (NHSAR) out of 47 MSOAs in Cardiff for the total number of younger dependents aged 0 to 14.
- Within it's locality Caerau is ranked 5<sup>th</sup> (MYE & NHSAR) out of 13 MSOAs for the total number of younger dependents aged 0 to 14.
- Caerau is ranked 36<sup>th</sup> (MYE) and 37<sup>th</sup> (NHSAR) out of 47 MSOAs for the total number of older dependents aged 65 plus.
- Within it's locality Caerau is ranked 12<sup>th</sup> (MYE) and 13<sup>th</sup> (NHSAR) out of 13 MSOAs for the total number of older dependents aged 65 plus.
- The majority of dependent age groups (0 to 14 + 65 and over) are younger dependents aged 0 to 14, representing 64.0% (MYE) and 64.8% (NHSAR) of total dependents.

<b>Dependency Ratios at Mid 2004 in Caerau MSOA</b> (Sources: Derived from data Supplied by ONS & HSW)		
	<b>MYE</b>	<b>NHSAR</b>
<b>Dependents Aged 0 - 14</b>	1,300	1,400
<b>Dependents Aged 65 Plus</b>	700	800
<b>Total Dependents</b>	2,100	2,100
<b>Persons Aged 15 to 64</b>	4,000	4,300
<b>Total Persons</b>	6,100	6,400
<b>Caerau Dependency Ratio</b>	0.51	0.50
<b>West Cardiff Dependency Ratio</b>	0.52	0.47
<b>Cardiff Dependency Ratio</b>	0.47	0.43
<b>Wales Dependency Ratio</b>	0.57	0.52

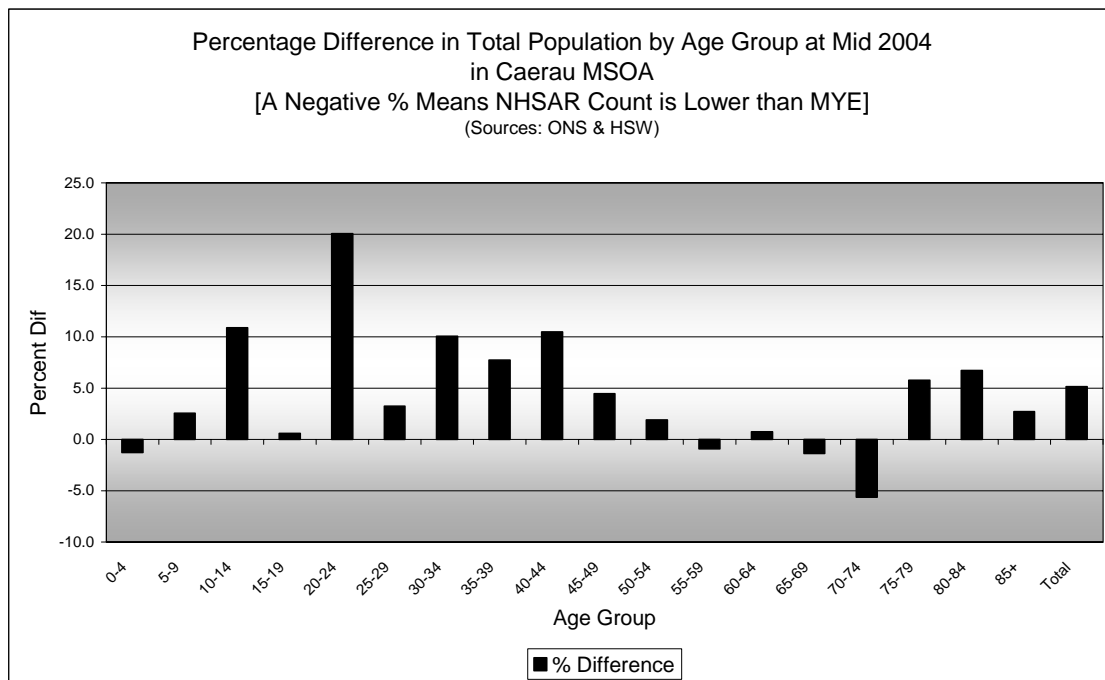
## Broad Age Group Comparisons

Comparison of Population Sources by Broad Age Group for Mid 2004 in Caerau MSOA						
	0-15	16-29	30-44	45-64 Males, 45-59 Females	65+ Males, 60+ Females	All Ages
<b>MYE</b>	1,400	1,200	1,400	1,200	900	6,100
<b>NHSAR</b>	1,500	1,300	1,500	1,200	900	6,400
<b>Difference #</b>	61	93	128	25	6	313
<b>Difference %</b>	4.3	7.8	9.3	2.0	0.7	5.1

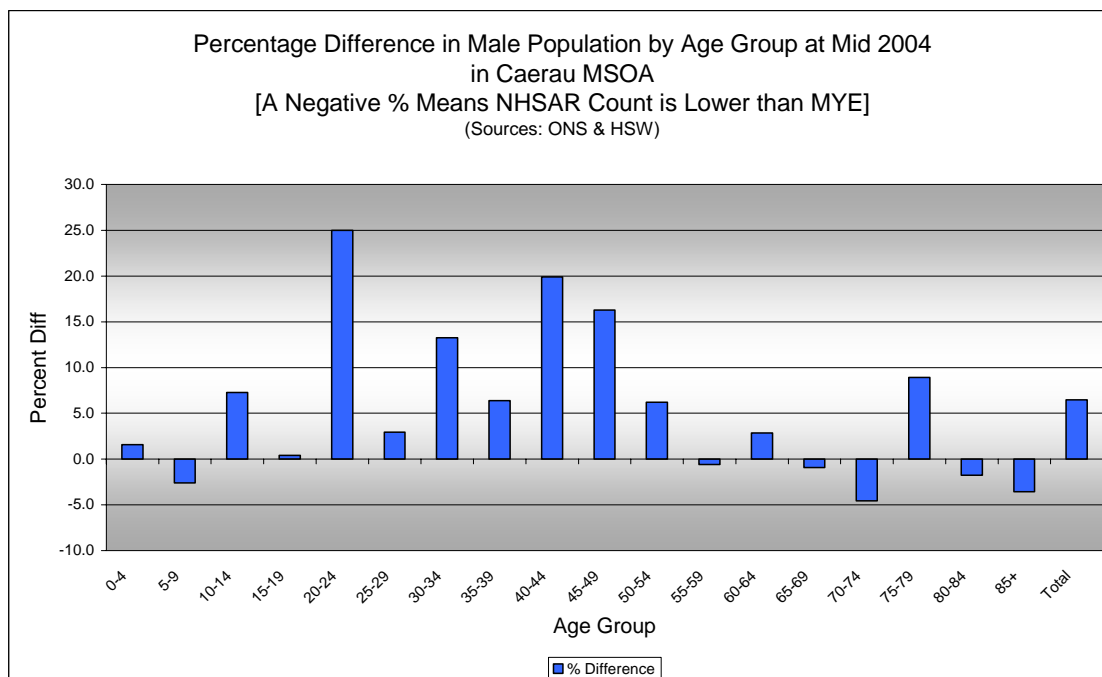
Comparison of Broad Population Age Structures for Mid 2004 by Percentage of Total Population in Caerau MSOA						
	0-15	16-29	30-44	45-64 Males, 45-59 Females	65+ Males, 60+ Females	All Ages
<b>MYE</b>	23.4	19.6	22.5	20.1	14.4	100.0
<b>NHSAR</b>	23.2	20.1	23.4	19.5	13.8	100.0



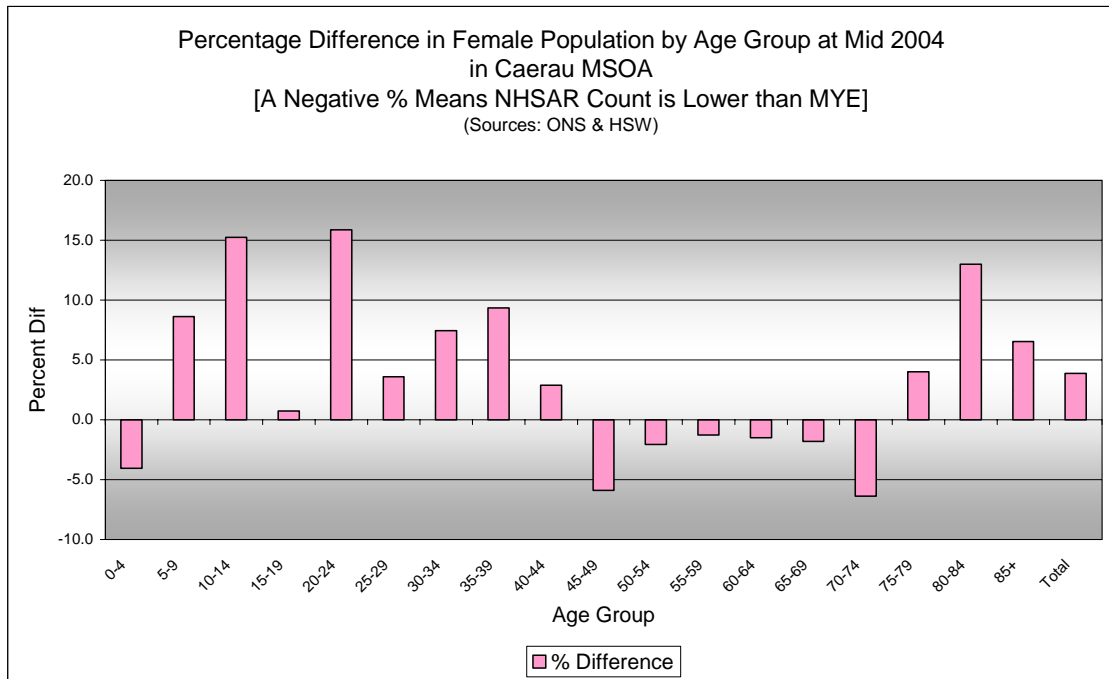
## Quinary Age Group Comparisons – 2004 NHSAR Minus MYE



Comparison of Total Population by Age Group at Mid 2004 in Caerau MSOA [Difference = NHSAR Minus MYE] (Sources: ONS & HSW)				
Age	Persons (MYE)	Persons (NHSAR)	# Difference	% Difference
0-4	400	400	-5	-1.3
5-9	400	400	11	2.6
10-14	500	600	55	10.9
15-19	500	500	3	0.6
20-24	400	500	77	20.1
25-29	400	400	13	3.3
30-34	400	500	44	10.0
35-39	500	500	38	7.7
40-44	400	500	46	10.5
45-49	400	400	17	4.5
50-54	400	400	7	1.9
55-59	300	300	-3	-0.9
60-64	300	300	2	0.7
65-69	200	200	-3	-1.4
70-74	200	200	-9	-5.6
75-79	200	200	9	5.8
80-84	100	100	9	6.7
85+	100	100	2	2.7
<b>Total</b>	<b>6,100</b>	<b>6,400</b>	<b>313</b>	<b>5.1</b>



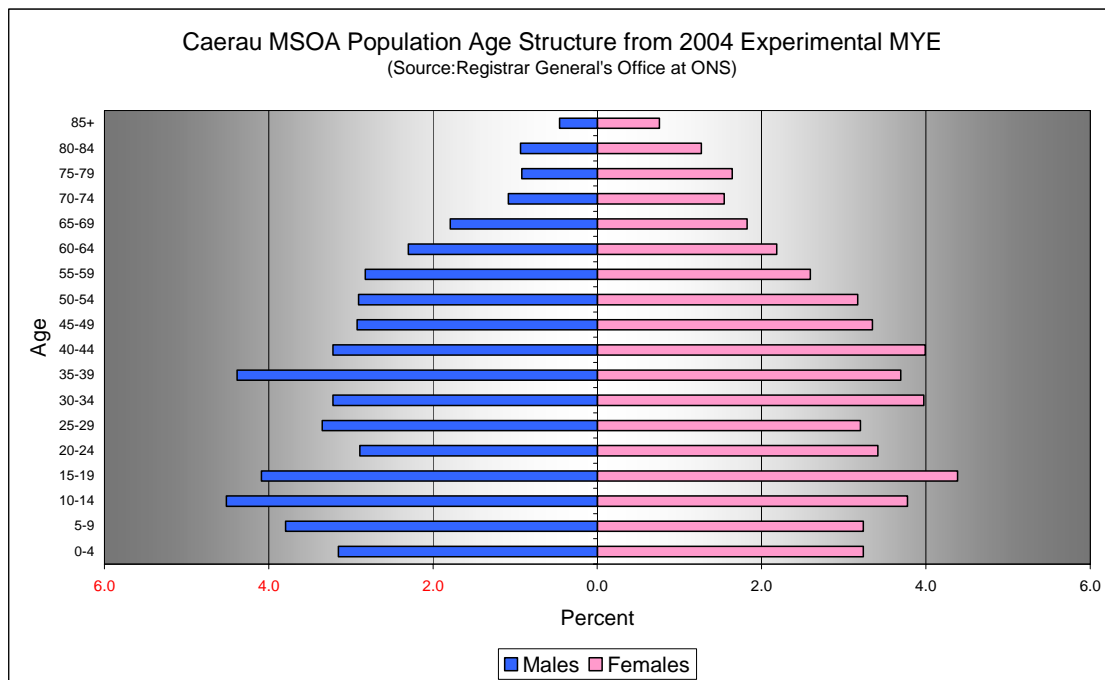
<b>Comparison of Male Population by Age Group at Mid 2004 in MSOA</b> [Difference = NHSAR Minus MYE] (Sources: ONS & HSW)				
Age	Males (MYE)	Males (NHSAR)	# Difference	% Difference
0-4	200	200	3	1.6
5-9	200	200	-6	-2.6
10-14	300	300	20	7.3
15-19	200	300	1	0.4
20-24	200	200	44	25.0
25-29	200	200	6	2.9
30-34	200	200	26	13.3
35-39	300	300	17	6.4
40-44	200	200	39	19.9
45-49	200	200	29	16.3
50-54	200	200	11	6.2
55-59	200	200	-1	-0.6
60-64	100	100	4	2.9
65-69	100	100	-1	-0.9
70-74	100	100	-3	-4.5
75-79	100	100	5	8.9
80-84	100	100	-1	-1.8
85+	50	50	-1	-3.6
<b>Total</b>	<b>3,000</b>	<b>3,200</b>	<b>192</b>	<b>6.5</b>



**Comparison of Female Population by Age Group at Mid 2004 in Caerau MSOA**  
[Difference = NHSAR Minus MYE] (Sources: ONS & HSW)

Age	Females (MYE)	Females (NHSAR)	# Difference	% Difference
0-4	200	200	-8	-4.1
5-9	200	200	17	8.6
10-14	200	300	35	15.2
15-19	300	300	2	0.7
20-24	200	200	33	15.9
25-29	200	200	7	3.6
30-34	200	300	18	7.4
35-39	200	200	21	9.3
40-44	200	300	7	2.9
45-49	200	200	-12	-5.9
50-54	200	200	-4	-2.1
55-59	200	200	-2	-1.3
60-64	100	100	-2	-1.5
65-69	100	100	-2	-1.8
70-74	100	100	-6	-6.4
75-79	100	100	4	4.0
80-84	100	100	10	13.0
85+	50	50	3	6.5
<b>Total</b>	<b>3,100</b>	<b>3,200</b>	<b>121</b>	<b>3.9</b>

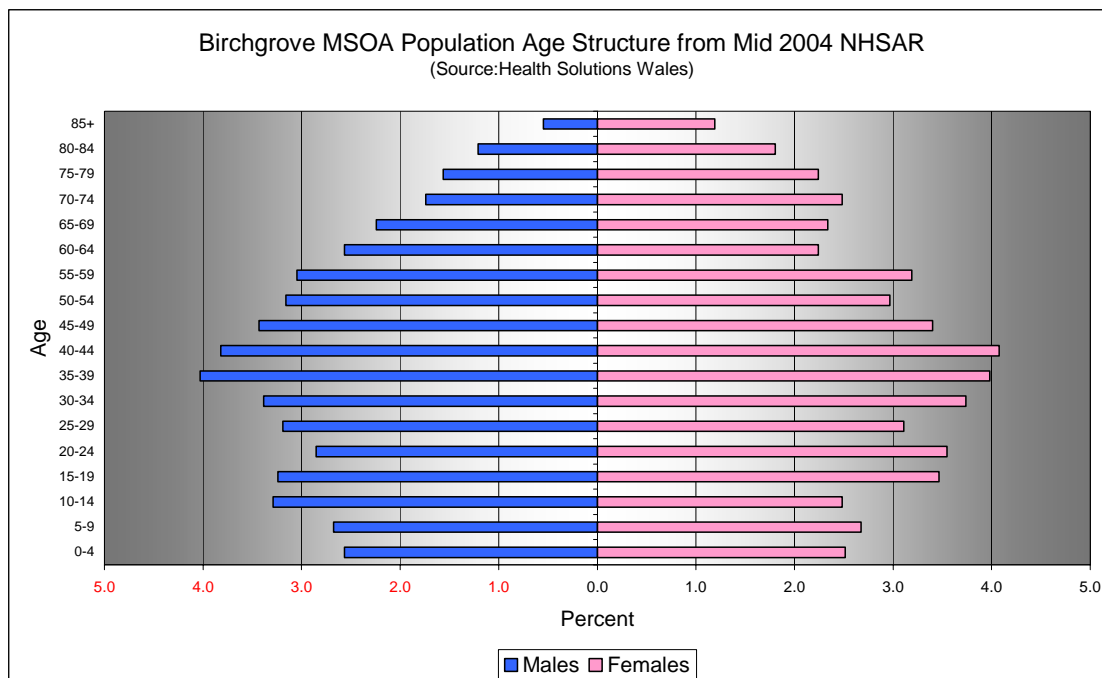
## Quinary Population Age Structure - 2004 MYE



Caerau MSOA Population Age Structure 2004 MYE (Source: ONS)			
Age	Males	Females	Persons
0-4	200	200	400
5-9	200	200	400
10-14	300	200	500
15-19	200	300	500
20-24	200	200	400
25-29	200	200	400
30-34	200	200	400
35-39	300	200	500
40-44	200	200	400
45-49	200	200	400
50-54	200	200	400
55-59	200	200	300
60-64	100	100	300
65-69	100	100	200
70-74	100	100	200
75-79	100	100	200
80-84	100	100	100
85+	50	50	100
<b>Total</b>	<b>3,000</b>	<b>3,100</b>	<b>6,100</b>

Caerau MSOA Population Age Structure 2004 MYE - Percentage of total Persons (Source: ONS)			
Age	Males	Females	Persons
0-4	3.2	3.2	6.4
5-9	3.8	3.2	7.0
10-14	4.5	3.8	8.3
15-19	4.1	4.4	8.5
20-24	2.9	3.4	6.3
25-29	3.4	3.2	6.6
30-34	3.2	4.0	7.2
35-39	4.4	3.7	8.1
40-44	3.2	4.0	7.2
45-49	2.9	3.4	6.3
50-54	2.9	3.2	6.1
55-59	2.8	2.6	5.4
60-64	2.3	2.2	4.5
65-69	1.8	1.8	3.6
70-74	1.1	1.5	2.6
75-79	0.9	1.6	2.6
80-84	0.9	1.3	2.2
85+	0.5	0.8	1.2
<b>Total</b>	<b>48.8</b>	<b>51.2</b>	<b>100.0</b>

## Quinary Population Age Structure Mid 2004 NHSAR



Caerau MSOA Population Age Structure - NHSAR Mid 2004 (Source: HSW)			
Age	Males	Females	Persons
0-4	200	200	400
5-9	200	200	400
10-14	300	300	600
15-19	300	300	500
20-24	200	200	500
25-29	200	200	400
30-34	200	300	500
35-39	300	200	500
40-44	200	300	500
45-49	200	200	400
50-54	200	200	400
55-59	200	200	300
60-64	100	100	300
65-69	100	100	200
70-74	100	100	200
75-79	100	100	200
80-84	100	100	100
85+	50	50	100
<b>Total</b>	<b>3,200</b>	<b>3,200</b>	<b>6,400</b>

Caerau MSOA Population Age Structure % of Total Persons - NHSAR Mid 2004 (Source: HSW)			
Age	Males	Females	Persons
0-4	3.0	3.0	6.0
5-9	3.5	3.3	6.9
10-14	4.6	4.1	8.7
15-19	3.9	4.2	8.1
20-24	3.4	3.8	7.2
25-29	3.3	3.2	6.4
30-34	3.5	4.1	7.5
35-39	4.4	3.8	8.3
40-44	3.7	3.9	7.6
45-49	3.2	3.0	6.2
50-54	2.9	3.0	5.9
55-59	2.7	2.4	5.1
60-64	2.2	2.0	4.3
65-69	1.7	1.7	3.4
70-74	1.0	1.4	2.4
75-79	1.0	1.6	2.6
80-84	0.9	1.4	2.2
85+	0.4	0.8	1.2
<b>Total</b>	<b>49.4</b>	<b>50.6</b>	<b>100.0</b>