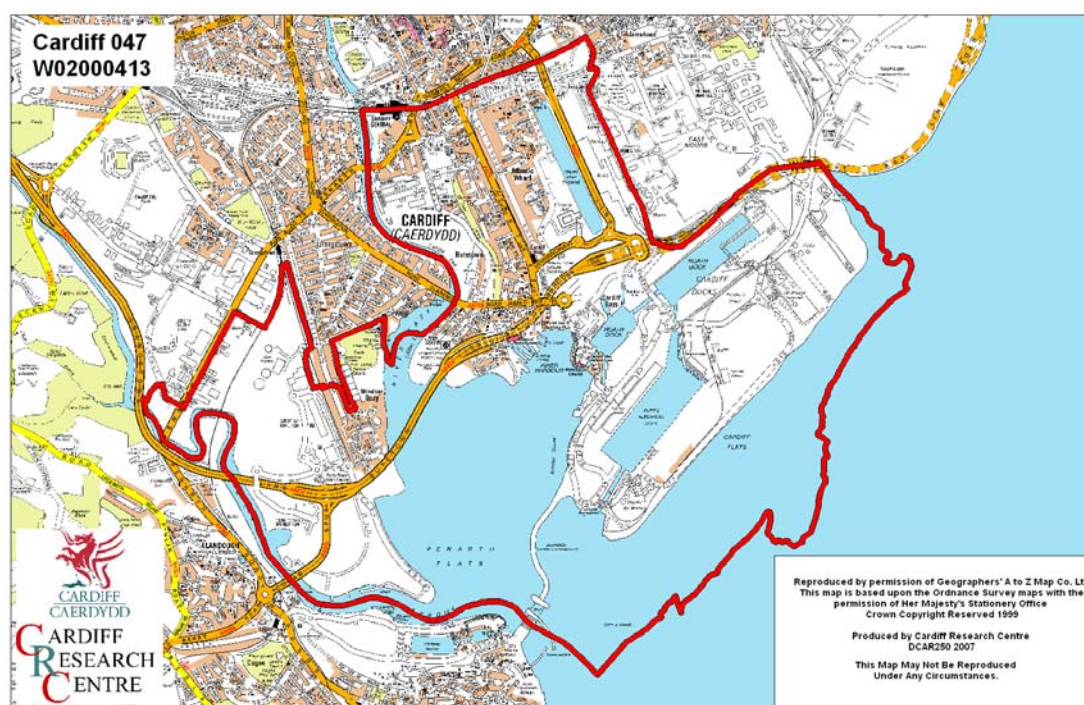


Cardiff Bay Middle Super Output Area

A comparison of Population Age Structure's for Mid 2004 from the National Statistics experimental Mid Year Estimate and the National Health Service Administrative Records (NHSAR)

Figure: Cardiff Bay MSOA (Cardiff Central Locality)



Disclosure Control: Due to a requirement to observe the Registrar General's disclosure control protocols for experimental and official Mid Year Estimates of population it has been necessary to round population figures provided in this profile to the nearest 100 persons. Due to the danger of disclosure by difference the NHSAR population figures in this brief have also been rounded to the nearest 100 persons. For both datasets, when the population estimate was less than 50 persons, the value of 50 has been used. However, it is important to note that all graphics and the percentages presented in this profile have been produced using raw un-rounded estimates. The difference between NHSAR and MYE population estimates are also presented here in their un-rounded raw format.

Summary Key Statistics

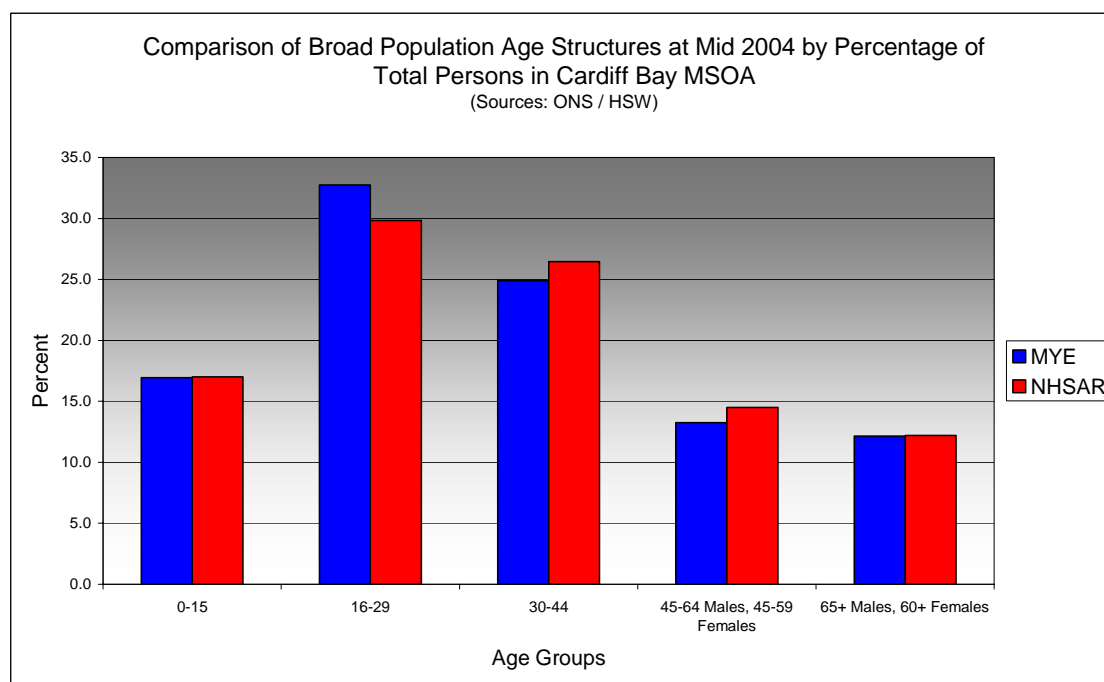
- In Cardiff Bay total NHSAR population at Mid 2004 was 7.3% (approximately 500 persons) higher than the experimental Mid Year Estimate.
- Total male NHSAR population was 13.0% higher, while total female population was 1.0% higher.
- NHSAR population counts showed the greatest variance from the Experimental MYEs in the following age groups: 40 to 44 years 29.2% higher & 10 to 14 years 21.3% higher.
- Cardiff Bay is ranked 41st (MYE) and 40th (NHSAR) out of 47 MSOAs in Cardiff for it's total dependency ratio.
- Within the Cardiff South East locality Cardiff Bay is ranked 11th (MYE & NHSAR) out of 11 MSOAs for it's total dependency ratio.
- Cardiff Bay is ranked 28th (MYE) and 26th (NHSAR) out of 47 MSOAs in Cardiff for the total number of younger dependents aged 0 to 14.
- Within it's locality Cardiff Bay is ranked 9th (MYE & NHSAR) out of 11 MSOAs for the total number of younger dependents aged 0 to 14.
- Cardiff Bay is ranked 34th (MYE) and 33rd (NHSAR) out of 47 MSOAs for the total number of older dependents aged 65 plus.
- Within it's locality Cardiff Bay is ranked 8th (MYE) and 7th (NHSAR) out of 11 MSOAs for the total number of older dependents aged 65 plus.
- The majority of dependent age groups (0 to 14 + 65 and over) are younger dependents aged 0 to 14, representing 60.3% (MYE) and 60.1% (NHSAR) of total dependents.

Dependency Ratios at Mid 2004 in Cardiff Bay MSOA (Sources: Derived from data supplied by ONS & HSW)		
	MYE	NHSAR
Dependents Aged 0 - 14	1,100	1,200
Dependents Aged 65 Plus	800	800
Total Dependents	1,900	2,000
Persons Aged 15 to 64	5,200	5,600
Total Persons	7,100	7,600
Cardiff Bay Dependency Ratio	0.36	0.37
South East Cardiff Dependency Ratio	0.52	0.51
Cardiff Dependency Ratio	0.47	0.43
Wales Dependency Ratio	0.57	0.52

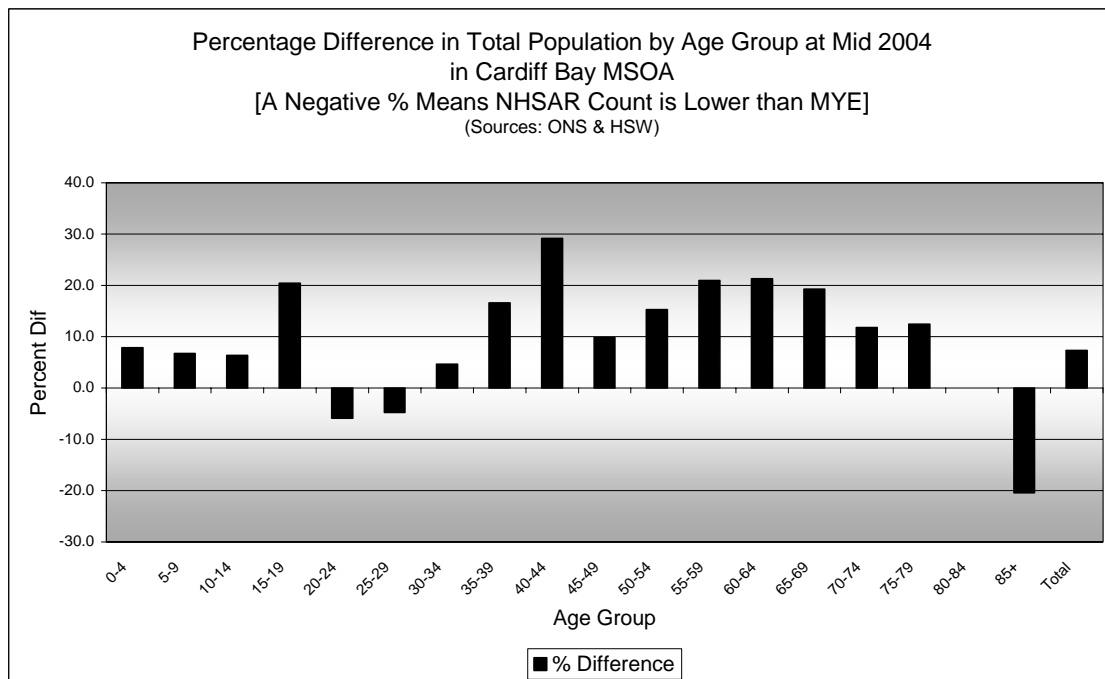
Broad Age Group Comparisons

Comparison of Population Sources by Broad Age Group for Mid 2004 in Cardiff Bay MSOA						
	0-15	16-29	30-44	45-64 Males, 45-59 Females	65+ Males, 60+ Females	All Ages
MYE	1,200	2,300	1,800	900	900	7,100
NHSAR	1,300	2,300	2,000	1,100	900	7,600
Difference #	93	-52	248	165	66	520
Difference %	7.7	-2.2	14.0	17.5	7.6	7.3

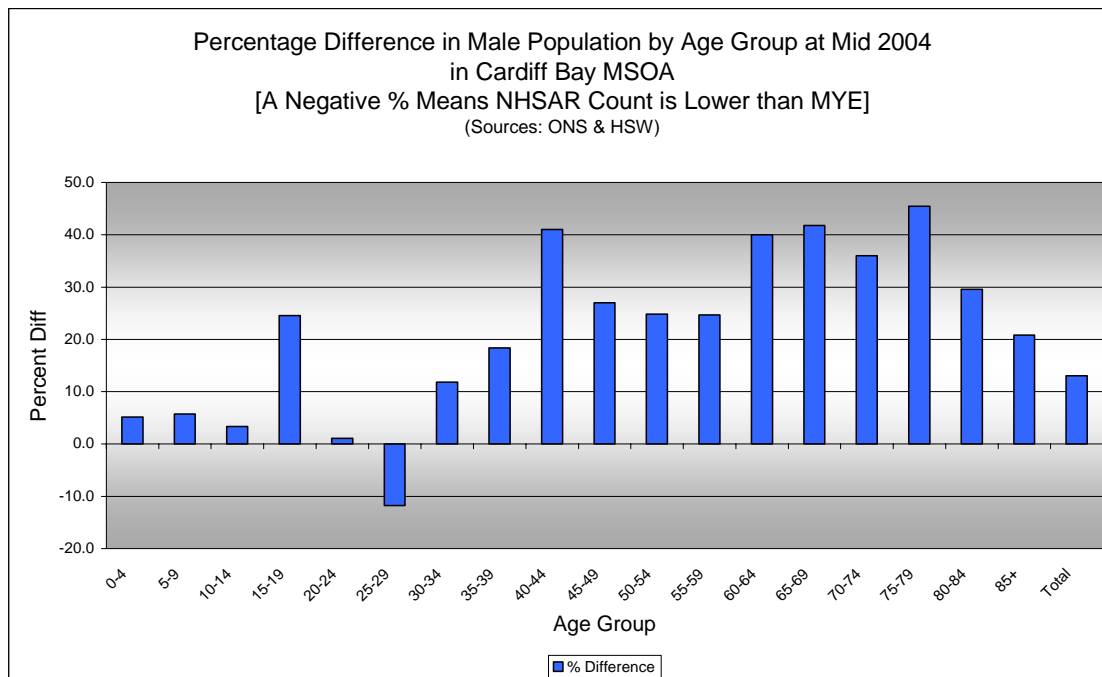
Comparison of Broad Population Age Structures for Mid 2004 by Percentage of Total Population in Cardiff Bay MSOA						
	0-15	16-29	30-44	45-64 Males, 45-59 Females	65+ Males, 60+ Females	All Ages
MYE	16.9	32.7	24.9	13.2	12.2	100.0
NHSAR	17.0	29.8	26.5	14.5	12.2	100.0



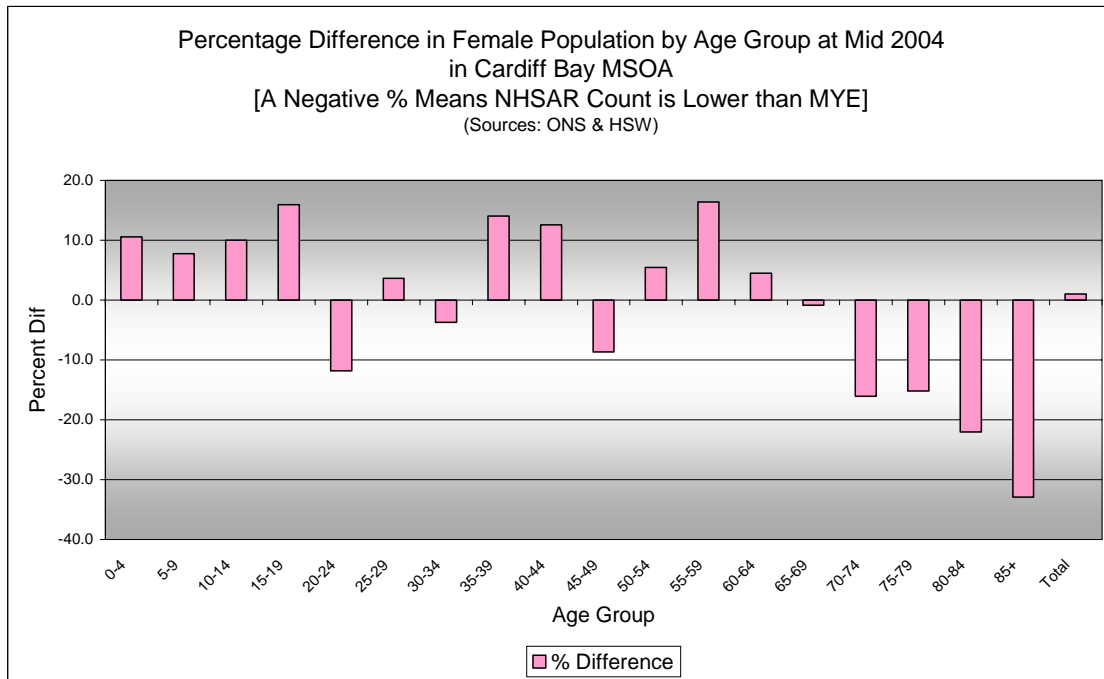
Quinary Age Group Comparisons – 2004 NHSAR Minus MYE



Age	Persons (MYE)	Persons (NHSAR)	# Difference	% Difference
0-4	400	500	34	7.9
5-9	400	400	26	6.7
10-14	300	400	21	6.4
15-19	300	400	67	20.4
20-24	800	800	-47	-5.9
25-29	1,300	1,200	-60	-4.7
30-34	800	900	38	4.7
35-39	600	700	93	16.6
40-44	400	500	117	29.2
45-49	300	400	33	9.9
50-54	300	300	40	15.3
55-59	200	300	52	21.0
60-64	200	300	45	21.3
65-69	200	300	42	19.3
70-74	200	200	22	11.8
75-79	100	200	18	12.4
80-84	100	100	0	0.0
85+	100	100	-21	-20.4
Total	7,100	7,600	520	7.3



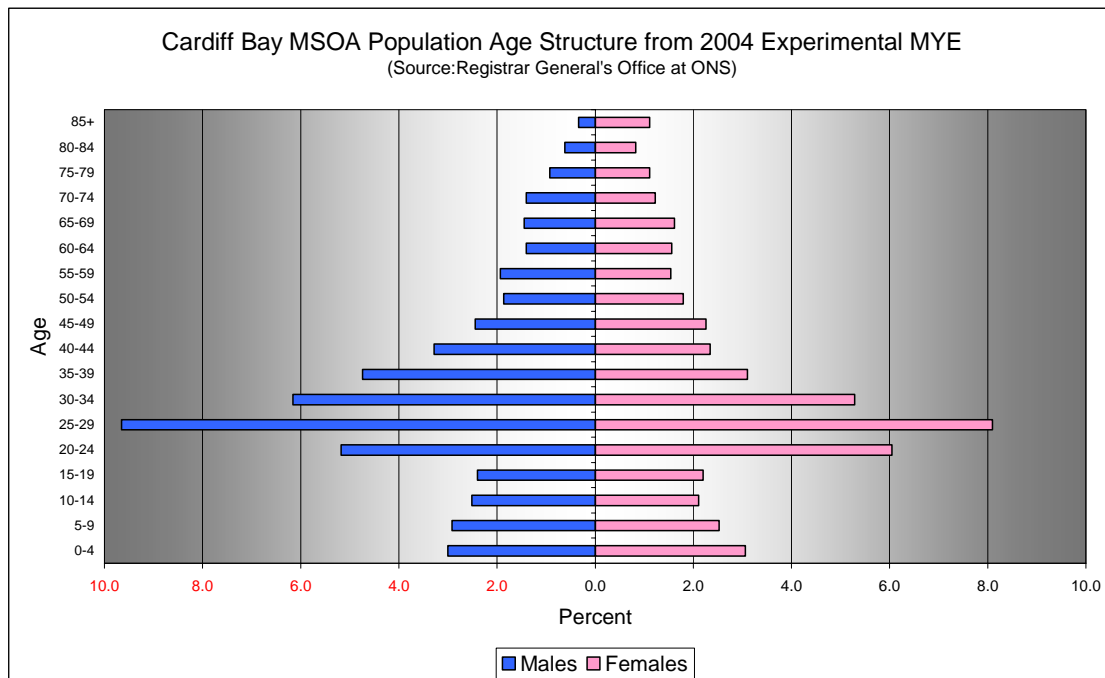
Comparison of Male Population by Age Group at Mid 2004 in MSOA [Difference = NHSAR Minus MYE] (Sources: ONS & HSW)				
Age	Males (MYE)	Males (NHSAR)	# Difference	% Difference
0-4	200	200	11	5.1
5-9	200	200	12	5.8
10-14	200	200	6	3.4
15-19	200	200	42	24.6
20-24	400	300	4	1.1
25-29	700	600	-81	-11.8
30-34	400	500	52	11.8
35-39	300	400	62	18.3
40-44	200	300	96	41.0
45-49	200	200	47	27.0
50-54	100	200	33	24.8
55-59	100	200	34	24.6
60-64	100	100	40	40.0
65-69	100	100	43	41.7
70-74	100	100	36	36.0
75-79	100	100	30	45.5
80-84	50	100	13	29.5
85+	50	50	5	20.8
Total	3,700	4,200	485	13.0



Comparison of Female Population by Age Group at Mid 2004 in Cardiff Bay MSOA
[Difference = NHSAR Minus MYE] (Sources: ONS & HSW)

Age	Females (MYE)	Females (NHSAR)	# Difference	% Difference
0-4	200	200	23	10.6
5-9	200	200	14	7.8
10-14	200	200	15	10.0
15-19	200	200	25	15.9
20-24	400	400	-51	-11.8
25-29	600	600	21	3.6
30-34	400	400	-14	-3.7
35-39	200	300	31	14.0
40-44	200	200	21	12.6
45-49	200	100	-14	-8.7
50-54	100	100	7	5.5
55-59	100	100	18	16.4
60-64	100	100	5	4.5
65-69	100	100	-1	-0.9
70-74	100	100	-14	-16.1
75-79	100	100	-12	-15.2
80-84	100	50	-13	-22.0
85+	100	100	-26	-32.9
Total	3,400	3,400	35	1.0

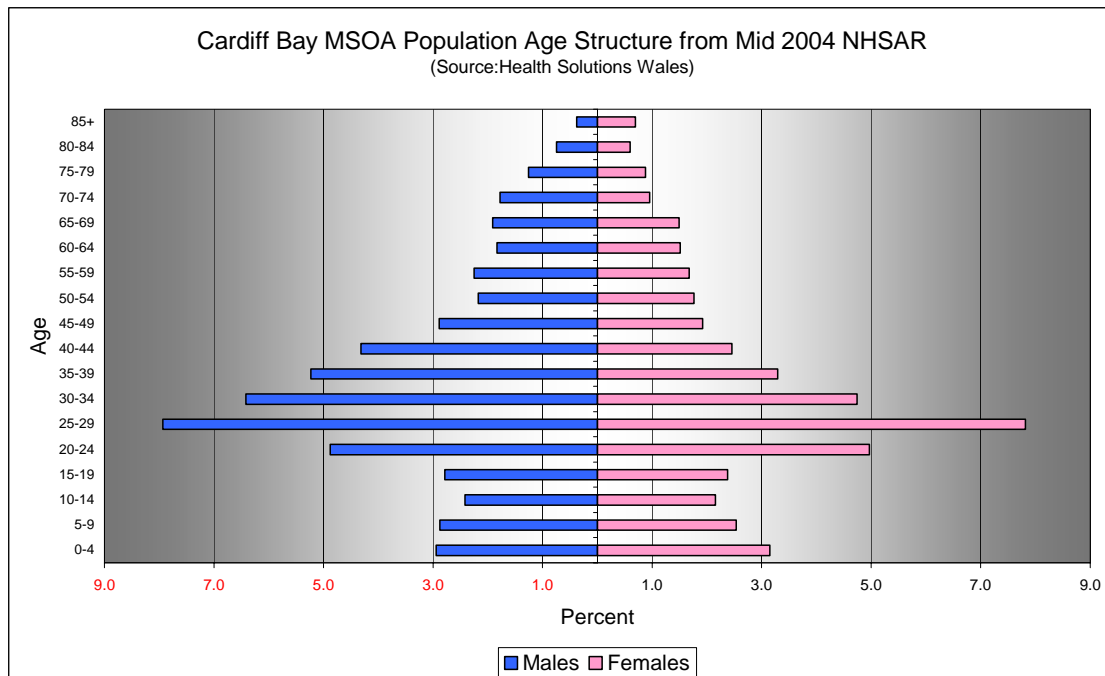
Quinary Population Age Structure - 2004 MYE



Cardiff Bay MSOA Population Age Structure 2004 MYE (Source: ONS)			
Age	Males	Females	Persons
0-4	200	200	400
5-9	200	200	400
10-14	200	200	300
15-19	200	200	300
20-24	400	400	800
25-29	700	600	1,300
30-34	400	400	800
35-39	300	200	600
40-44	200	200	400
45-49	200	200	300
50-54	100	100	300
55-59	100	100	200
60-64	100	100	200
65-69	100	100	200
70-74	100	100	200
75-79	100	100	100
80-84	50	100	100
85+	50	100	100
Total	3,700	3,400	7,100

Cardiff Bay MSOA Population Age Structure 2004 MYE - Percentage of total Persons (Source: ONS)			
Age	Males	Females	Persons
0-4	3.0	3.1	6.1
5-9	2.9	2.5	5.4
10-14	2.5	2.1	4.6
15-19	2.4	2.2	4.6
20-24	5.2	6.0	11.2
25-29	9.7	8.1	17.7
30-34	6.2	5.3	11.4
35-39	4.7	3.1	7.8
40-44	3.3	2.3	5.6
45-49	2.4	2.3	4.7
50-54	1.9	1.8	3.7
55-59	1.9	1.5	3.5
60-64	1.4	1.6	3.0
65-69	1.4	1.6	3.1
70-74	1.4	1.2	2.6
75-79	0.9	1.1	2.0
80-84	0.6	0.8	1.4
85+	0.3	1.1	1.4
Total	52.2	47.8	100.0

Quinary Population Age Structure Mid 2004 NHSAR



Cardiff Bay MSOA Population Age Structure - NHSAR Mid 2004 (Source: HSW)			
Age	Males	Females	Persons
0-4	200	200	500
5-9	200	200	400
10-14	200	200	400
15-19	200	200	400
20-24	300	400	800
25-29	600	600	1,200
30-34	500	400	900
35-39	400	300	700
40-44	300	200	500
45-49	200	100	400
50-54	200	100	300
55-59	200	100	300
60-64	100	100	300
65-69	100	100	300
70-74	100	100	200
75-79	100	100	200
80-84	100	50	100
85+	50	100	100
Total	4,200	3,400	7,600

Cardiff Bay MSOA Population Age Structure % of Total Persons - NHSAR Mid 2004 (Source: HSW)			
Age	Males	Females	Persons
0-4	2.9	3.2	6.1
5-9	2.9	2.5	5.4
10-14	2.4	2.2	4.6
15-19	2.8	2.4	5.2
20-24	4.9	5.0	9.8
25-29	7.9	7.8	15.8
30-34	6.4	4.7	11.2
35-39	5.2	3.3	8.5
40-44	4.3	2.5	6.8
45-49	2.9	1.9	4.8
50-54	2.2	1.8	3.9
55-59	2.2	1.7	3.9
60-64	1.8	1.5	3.3
65-69	1.9	1.5	3.4
70-74	1.8	1.0	2.7
75-79	1.3	0.9	2.1
80-84	0.7	0.6	1.3
85+	0.4	0.7	1.1
Total	55.0	45.0	100.0