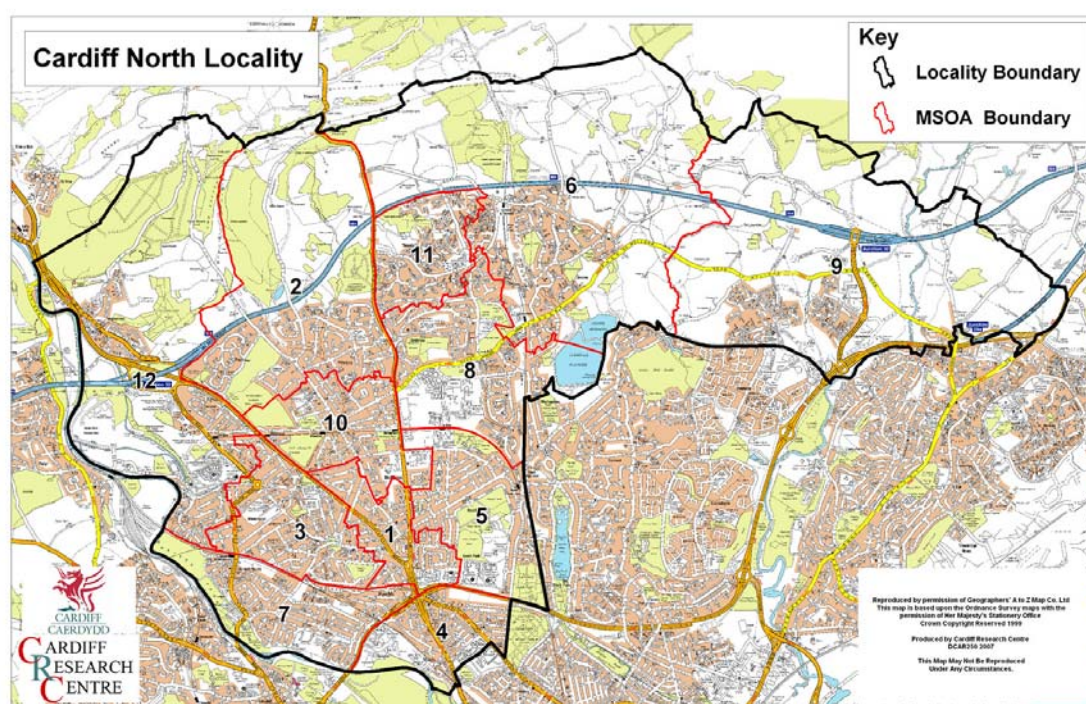


Cardiff North Locality Area

A comparison of Population Age Structure's for Mid 2004 from the National Statistics experimental Mid Year Estimate and the National Health Service Administrative Records (NHSAR)

Figure: Cardiff North Locality



**1 = Birchgrove; 2 = Deri; 3 = Eglwys Newydd; 4 = Gabalfa; 5 = Heath Park;
6 = Lisvane; 7 = Llandaff North; 8 = Llanishen; 9 = Pontprennau; 10 = Rhiwbina;
11 = Thornhill & 12 = Whitchurch**

Disclosure Control: Due to a requirement to observe the Registrar General's disclosure control protocols for experimental and official Mid Year Estimates of population it has been necessary to round population figures provided in this profile to the nearest 100 persons. Due to the danger of disclosure by difference the NHSAR population figures in this brief have also been rounded to the nearest 100 persons. For both datasets, when the population estimate was less than 50 persons, the value of 50 has been used. However, it is important to note that all graphics and the percentages presented in this profile have been produced using raw un-rounded estimates. The difference between NHSAR and MYE population estimates are also presented here in their un-rounded raw format.

Summary Key Statistics Page

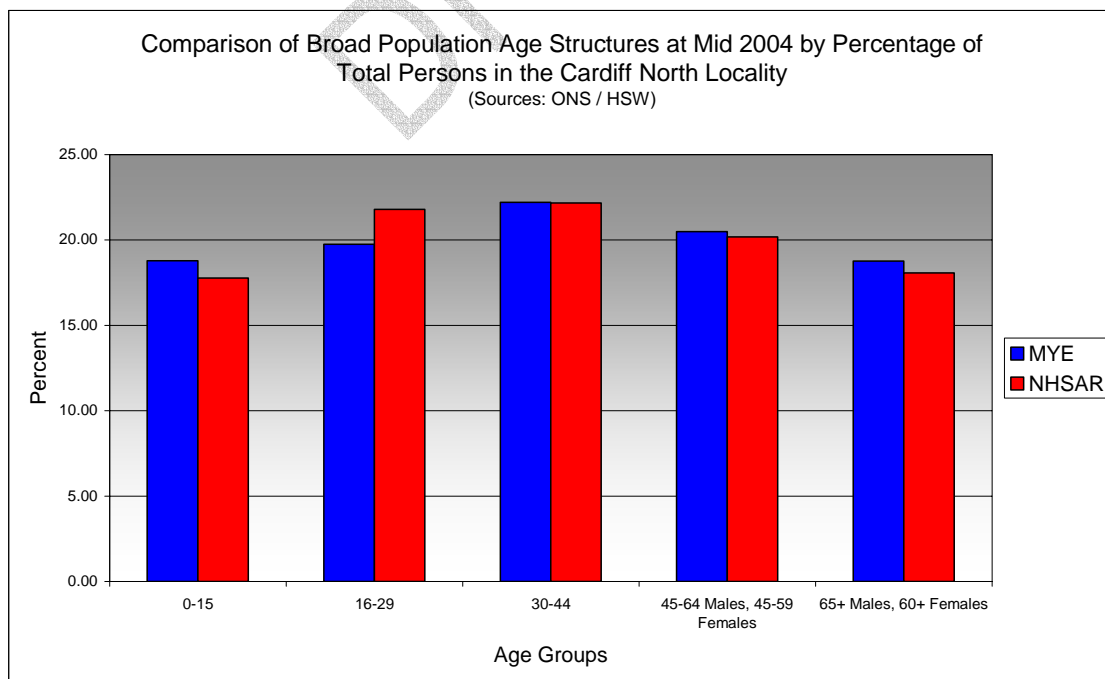
- In the Cardiff North Locality total NHSAR population at Mid 2004 was 4.4% (approximately 3,700 persons) higher than the experimental Mid Year Estimate.
- Total male NHSAR population was 5.7% higher, while total female population was 3.2% higher.
- NHSAR population counts showed the greatest variance from the Experimental MYEs in the following age groups: 25 to 29 years 26.5% higher and 20 to 24 years 20.0% higher. The NHSAR count is higher in most age groups within the locality, the exception being the 0 to 9 and the 80 plus age groups.
- The Cardiff North Locality is ranked 3rd (MYE) and 2nd (NHSAR) out of four Localities in Cardiff for it's total dependency ratio. This means it has the second highest dependency ratio of the four localities in Cardiff according to the MYE population age structure. The locality has higher ratios than the Cardiff averages but lower ratios than the Wales averages.
- The Cardiff North Locality is ranked 3rd (MYE & NHSAR) out of four localities for the total number of younger dependents aged 0 to 14 years old.
- The locality is ranked 1st (MYE & NHSAR) out of four localities for the total number of older dependents aged 65 and over.
- A small majority of dependant age group population (0 to 14 + 65 and over) are young dependents aged 0 to 14, representing 51.2% (MYE) and 50.7% (NHSAR).

Dependency Ratios at Mid 2004 in the Cardiff North Locality (Sources: Derived from Data Supplied by ONS & HSW)		
	MYE	NHSAR
Dependents Aged 0 - 14	14,600	14,400
Dependents Aged 65 Plus	14,000	14,000
Total Dependents	28,600	28,500
Persons Aged 15 to 64	55,400	59,300
Total Persons	84,000	87,700
Cardiff North Dependency Ratio	0.52	0.48
Cardiff Dependency Ratio	0.47	0.43
Wales Dependency Ratio	0.57	0.52

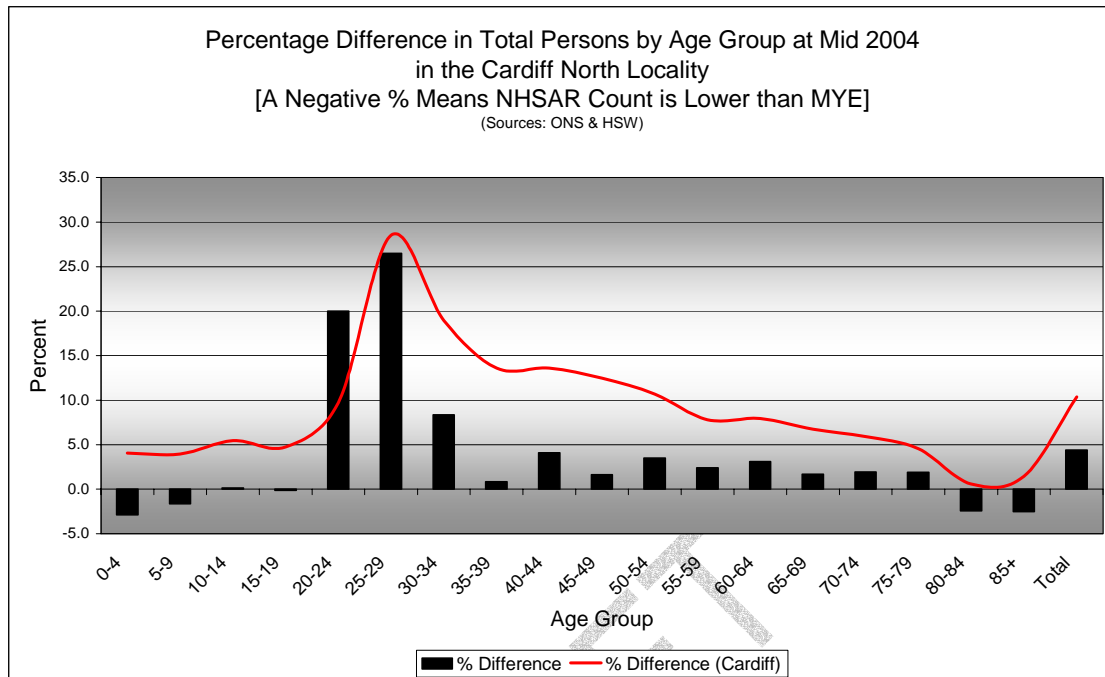
Broad Age Group Comparisons

Comparison of Population Sources by Broad Age Group for Mid 2004 in the Cardiff North Locality						
	0-15	16-29	30-44	45-64 Males, 45-59 Females	65+ Males, 60+ Females	All Ages
MYE	15,800	16,600	18,700	17,200	15,800	84,000
NHSAR	15,600	19,100	19,500	17,700	15,800	87,700
Difference #	-198	2,533	799	483	83	3,700
Difference %	-1.25	15.27	4.28	2.81	0.53	4.40

Comparison of Broad Population Age Structures for Mid 2004 by Percentage of Total Population in the Cardiff North Locality						
	0-15	16-29	30-44	45-64 Males, 45-59 Females	65+ Males, 60+ Females	All Ages
MYE	18.79	19.75	22.20	20.49	18.77	100.00
NHSAR	17.77	21.81	22.18	20.18	18.07	100.0

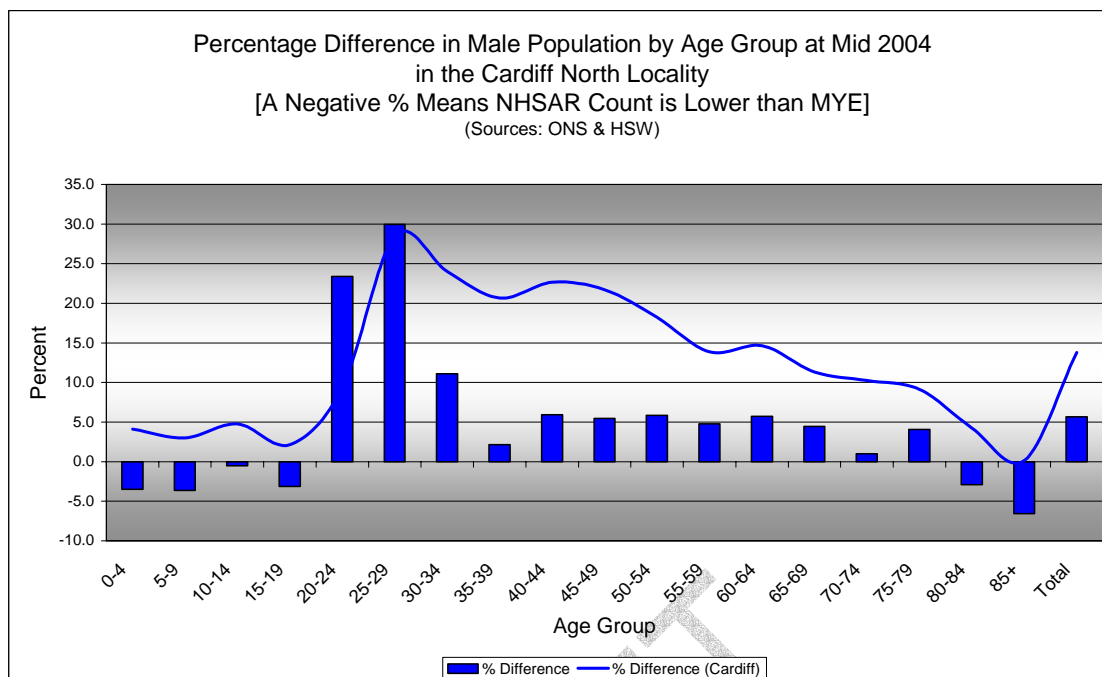


Quinary Age Group Comparisons – 2004 NHSAR Minus MYE



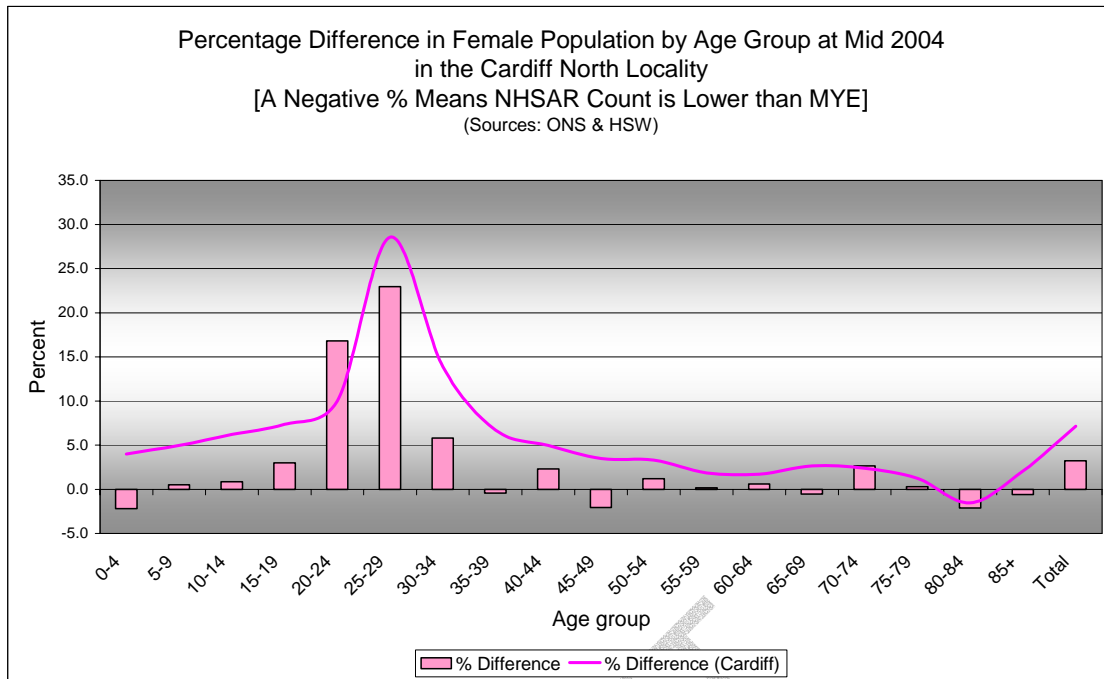
Comparison of Total Population by Age Group at Mid 2004 in the Cardiff North Locality
[Difference = NHSAR Minus MYE] (Sources: ONS & HSW)

Age	Persons (MYE)	Persons (NHSAR)	# Difference	% Difference
0-4	4,400	4,300	-128	-2.9
5-9	5,000	4,900	-82	-1.6
10-14	5,200	5,200	7	0.1
15-19	6,600	6,600	-9	-0.1
20-24	6,300	7,600	1,261	20.0
25-29	4,900	6,100	1,286	26.5
30-34	5,800	6,300	485	8.3
35-39	6,500	6,500	53	0.8
40-44	6,400	6,700	261	4.1
45-49	5,600	5,700	92	1.6
50-54	5,100	5,200	177	3.5
55-59	4,800	4,900	116	2.4
60-64	3,500	3,600	109	3.1
65-69	3,300	3,400	57	1.7
70-74	3,200	3,300	63	1.9
75-79	3,100	3,100	58	1.9
80-84	2,600	2,600	-64	-2.4
85+	1,700	1,600	-42	-2.5
Total	84,000	87,700	3,700	4.4



Comparison of Male Population by Age Group at Mid 2004 in the Cardiff North Locality
[Difference = NHSAR Minus MYE] (Sources: ONS & HSW)

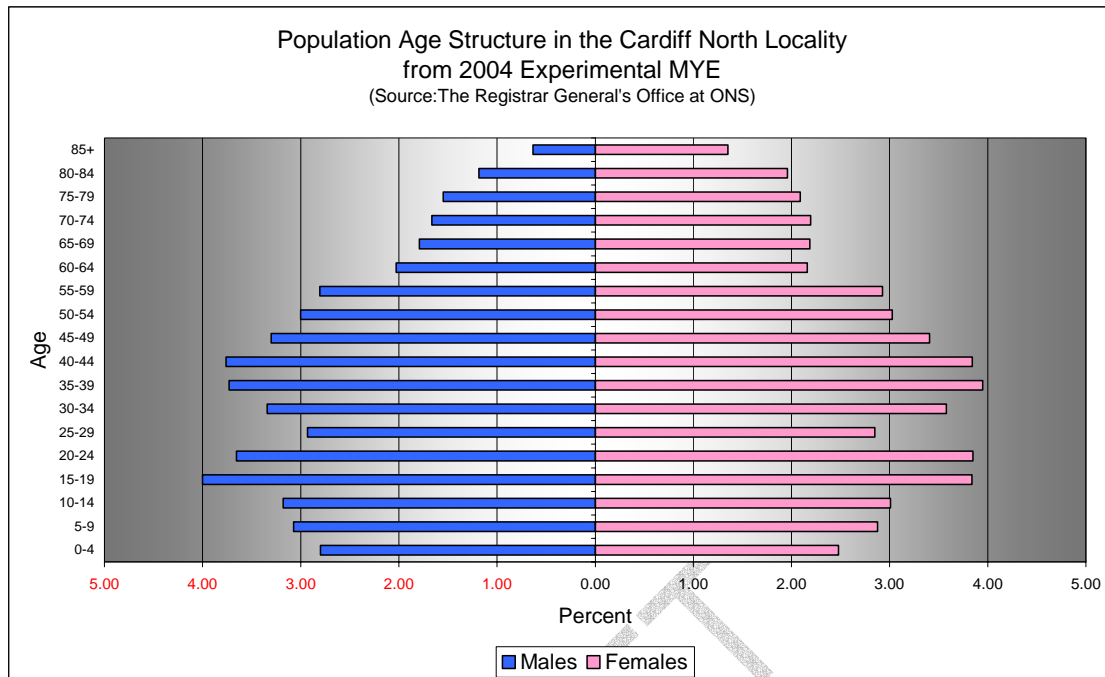
Age	Males (MYE)	Males (NHSAR)	# Difference	% Difference
0-4	2,400	2,300	-82	-3.5
5-9	2,600	2,500	-94	-3.6
10-14	2,700	2,700	-14	-0.5
15-19	3,400	3,300	-105	-3.1
20-24	3,100	3,800	718	23.4
25-29	2,500	3,200	737	29.9
30-34	2,800	3,100	311	11.1
35-39	3,100	3,200	67	2.1
40-44	3,200	3,300	187	5.9
45-49	2,800	2,900	151	5.4
50-54	2,500	2,700	147	5.8
55-59	2,400	2,500	112	4.8
60-64	1,700	1,800	98	5.8
65-69	1,500	1,600	67	4.5
70-74	1,400	1,400	14	1.0
75-79	1,300	1,400	53	4.1
80-84	1,000	1,000	-29	-2.9
85+	500	500	-35	-6.6
Total	40,700	43,000	2,303	5.7



Comparison of Female Population by Age Group at Mid 2004 in the Cardiff North Locality
[Difference = NHSAR Minus MYE] (Sources: ONS & HSW)

Age	Females (MYE)	Females (NHSAR)	# Difference	% Difference
0-4	2,100	2,000	-46	-2.2
5-9	2,400	2,400	12	0.5
10-14	2,500	2,500	21	0.8
15-19	3,200	3,300	96	3.0
20-24	3,200	3,800	543	16.8
25-29	2,400	2,900	549	22.9
30-34	3,000	3,200	174	5.8
35-39	3,300	3,300	-14	-0.4
40-44	3,200	3,300	74	2.3
45-49	2,900	2,800	-59	-2.1
50-54	2,500	2,600	30	1.2
55-59	2,500	2,500	4	0.2
60-64	1,800	1,800	11	0.6
65-69	1,800	1,800	-10	-0.5
70-74	1,800	1,900	49	2.7
75-79	1,800	1,800	5	0.3
80-84	1,600	1,600	-35	-2.1
85+	1,100	1,100	-7	-0.6
Total	43,300	44,700	1,397	3.2

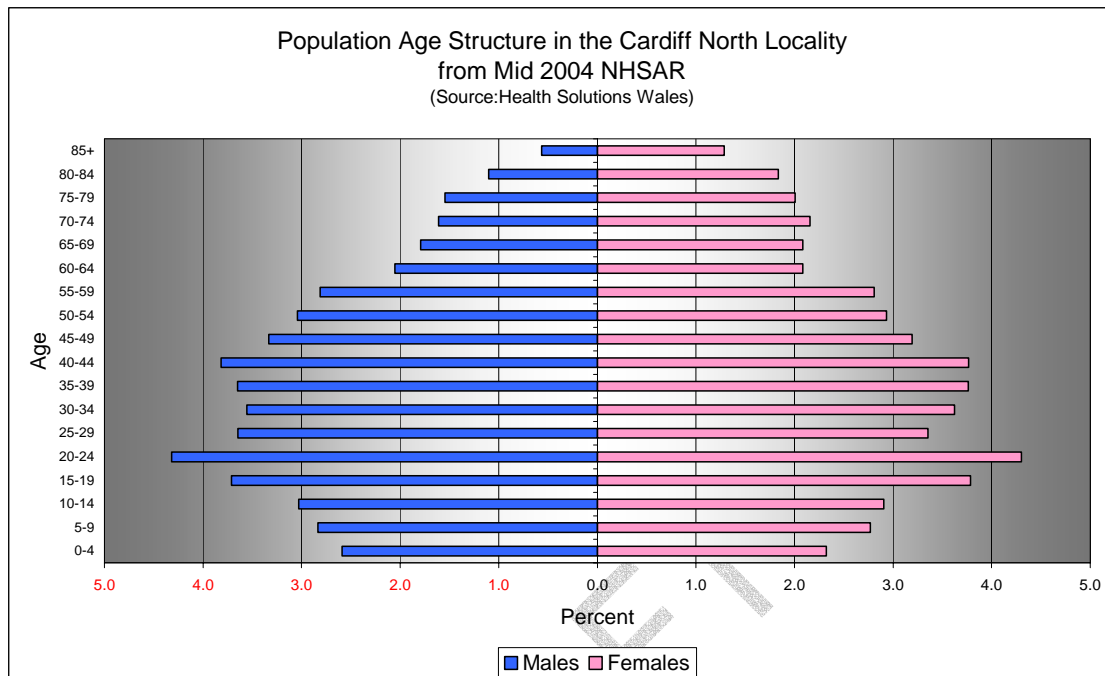
Quinary Population Age Structure - 2004 MYE



Cardiff North Locality Population Age Structure 2004 MYE (Source: ONS)			
Age	Males	Females	Persons
0-4	2,400	2,100	4,400
5-9	2,600	2,400	5,000
10-14	2,700	2,500	5,200
15-19	3,400	3,200	6,600
20-24	3,100	3,200	6,300
25-29	2,500	2,400	4,900
30-34	2,800	3,000	5,800
35-39	3,100	3,300	6,500
40-44	3,200	3,200	6,400
45-49	2,800	2,900	5,600
50-54	2,500	2,500	5,100
55-59	2,400	2,500	4,800
60-64	1,700	1,800	3,500
65-69	1,500	1,800	3,300
70-74	1,400	1,800	3,200
75-79	1,300	1,800	3,100
80-84	1,000	1,600	2,600
85+	500	1,100	1,700
Total	40,700	43,300	84,000

Cardiff North Locality Population Age Structure 2004 MYE - Percentage of total Persons (Source: ONS)			
Age	Males	Females	Persons
0-4	2.8	2.5	5.3
5-9	3.1	2.9	5.9
10-14	3.2	3.0	6.2
15-19	4.0	3.8	7.8
20-24	3.7	3.8	7.5
25-29	2.9	2.8	5.8
30-34	3.3	3.6	6.9
35-39	3.7	3.9	7.7
40-44	3.8	3.8	7.6
45-49	3.3	3.4	6.7
50-54	3.0	3.0	6.0
55-59	2.8	2.9	5.7
60-64	2.0	2.2	4.2
65-69	1.8	2.2	4.0
70-74	1.7	2.2	3.9
75-79	1.5	2.1	3.6
80-84	1.2	2.0	3.1
85+	0.6	1.4	2.0
Total	48.4	51.6	100.0

Quinary Population Age Structure Mid 2004 NHSAR



Cardiff North Locality Population Age Structure - NHSAR Mid 2004 (Source: HSW)			
Age	Males	Females	Persons
0-4	2,300	2,000	4,300
5-9	2,500	2,400	4,900
10-14	2,700	2,500	5,200
15-19	3,300	3,300	6,600
20-24	3,800	3,800	7,600
25-29	3,200	2,900	6,100
30-34	3,100	3,200	6,300
35-39	3,200	3,300	6,500
40-44	3,300	3,300	6,700
45-49	2,900	2,800	5,700
50-54	2,700	2,600	5,200
55-59	2,500	2,500	4,900
60-64	1,800	1,800	3,600
65-69	1,600	1,800	3,400
70-74	1,400	1,900	3,300
75-79	1,400	1,800	3,100
80-84	1,000	1,600	2,600
85+	500	1,100	1,600
Total	43,000	44,700	87,700

Cardiff North Locality Population Age Structure % of Total Persons - NHSAR Mid 2004 (Source: HSW)			
Age	Males	Females	Persons
0-4	2.6	2.3	4.9
5-9	2.8	2.8	5.6
10-14	3.0	2.9	5.9
15-19	3.7	3.8	7.5
20-24	4.3	4.3	8.6
25-29	3.6	3.4	7.0
30-34	3.6	3.6	7.2
35-39	3.6	3.8	7.4
40-44	3.8	3.8	7.6
45-49	3.3	3.2	6.5
50-54	3.0	2.9	6.0
55-59	2.8	2.8	5.6
60-64	2.1	2.1	4.1
65-69	1.8	2.1	3.9
70-74	1.6	2.2	3.8
75-79	1.5	2.0	3.6
80-84	1.1	1.8	2.9
85+	0.6	1.3	1.9
Total	49.0	51.0	100.0