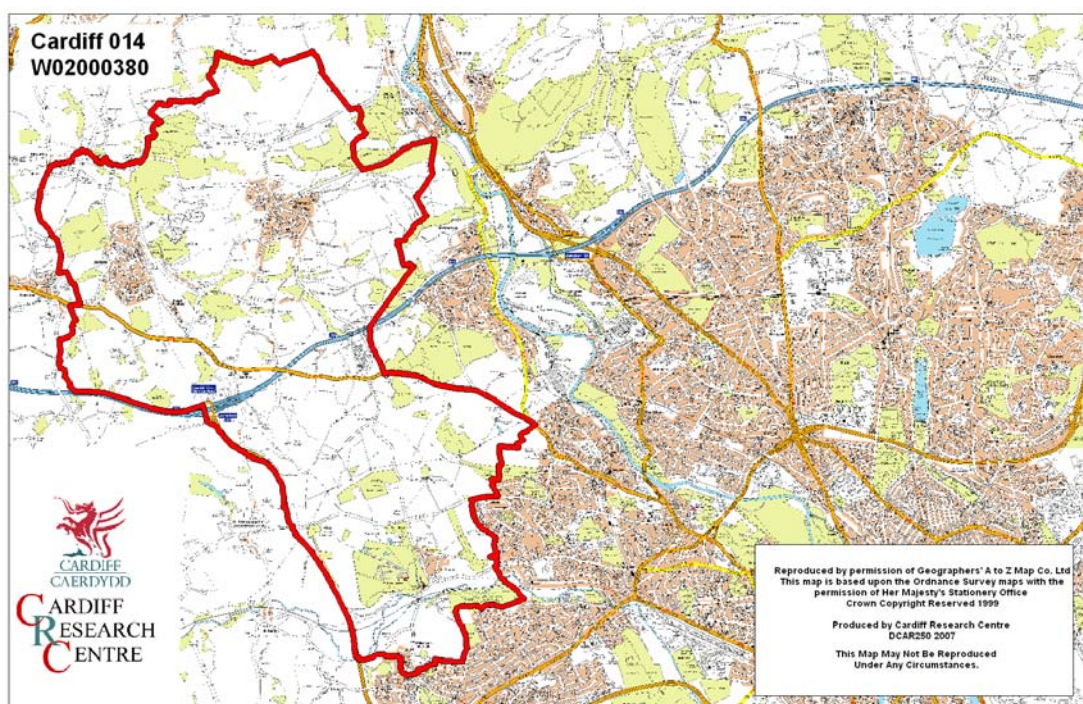


Cardiff Rural Middle Super Output Area

A comparison of Population Age Structure's for Mid 2004 from the National Statistics experimental Mid Year Estimate and the National Health Service Administrative Records (NHSAR)

Figure: Cardiff Rural MSOA (Cardiff West Locality)



Disclosure Control: Due to a requirement to observe the Registrar General's disclosure control protocols for experimental and official Mid Year Estimates of population it has been necessary to round population figures provided in this profile to the nearest 100 persons. Due to the danger of disclosure by difference the NHSAR population figures in this brief have also been rounded to the nearest 100 persons. For both datasets, when the population estimate was less than 50 persons, the value of 50 has been used. However, it is important to note that all graphics and the percentages presented in this profile have been produced using raw un-rounded estimates. The difference between NHSAR and MYE population estimates are also presented here in their un-rounded raw format.

Summary Key Statistics

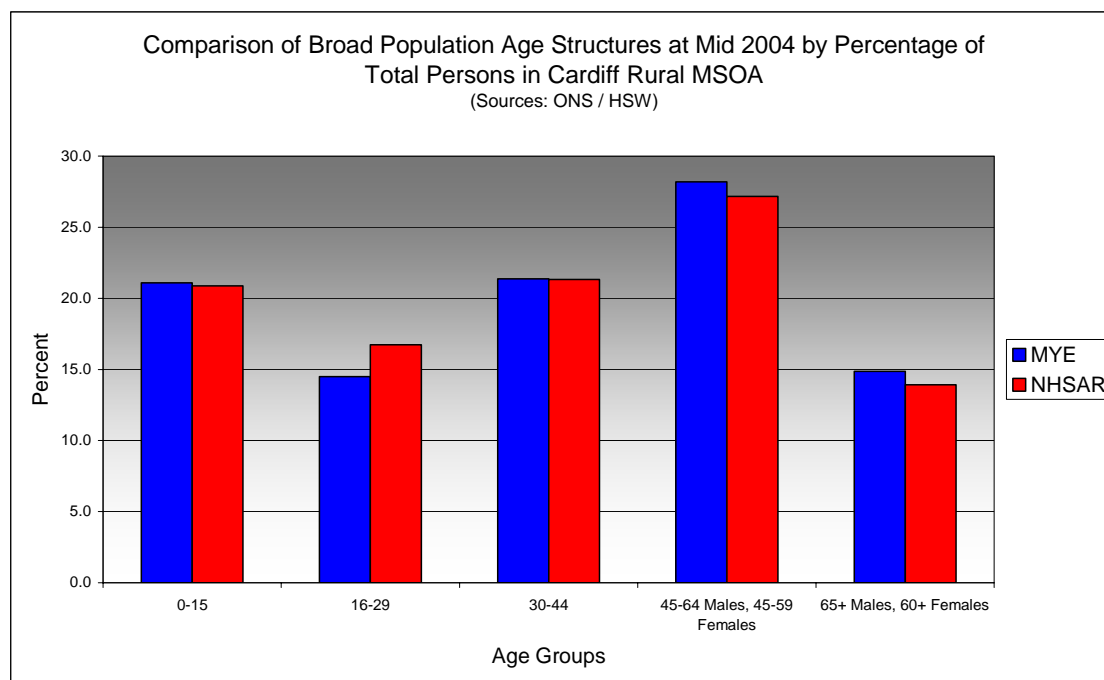
- In Cardiff Rural total NHSAR population at Mid 2004 was 6.4% (approximately 450 persons) higher than the experimental Mid Year Estimate.
- Total male NHSAR population was 7.5% higher, while total female population was 5.4% higher.
- NHSAR population counts showed the greatest variance from the Experimental MYEs in the following age groups: 20 to 24 years 43.9% higher & 25 to 29 years 22.8 higher.
- Cardiff Rural is ranked 33rd (MYE) and 29th (NHSAR) out of 47 MSOAs in Cardiff for it's total dependency ratio.
- Within the Cardiff West Locality Cardiff Rural is ranked 11th (MYE) and 9th (NHSAR) out of 13 MSOAs for it's total dependency ratio.
- Cardiff Rural is ranked 11th (MYE) and 14th (NHSAR) out of 47 MSOAs in Cardiff for the total number of younger dependents aged 0 to 14.
- Within it's locality Cardiff Rural is ranked 3rd (MYE) and 4th (NHSAR) out of 13 MSOAs for the total number of younger dependents aged 0 to 14.
- Cardiff Rural is ranked 24th (MYE) and 29th (NHSAR) out of 47 MSOAs for the total number of older dependents aged 65 plus.
- Within it's locality Cardiff Rural is ranked 7th (MYE) and 11th (NHSAR) out of 13 MSOAs for the total number of older dependents aged 65 plus.
- The majority of dependent age groups (0 to 14 + 65 and over) are younger dependents aged 0 to 14, representing 61.4% (MYE) and 62.9% (NHSAR) of total dependents.

Health Dependency Ratios at Mid 2004 in Cardiff Rural MSOA (Sources: Derived from data Supplied by ONS & HSW)		
	MYE	NHSAR
Dependents Aged 0 - 14	1,400	1,500
Dependents Aged 65 Plus	900	900
Total Dependents	2,300	2,400
Persons Aged 15 to 64	4,900	5,300
Total Persons	7,200	7,700
Cardiff Rural Dependency Ratio	0.47	0.44
Locality Dependency Ratio	0.52	0.47
Cardiff Dependency Ratio	0.47	0.43
Wales Dependency Ratio	0.57	0.52

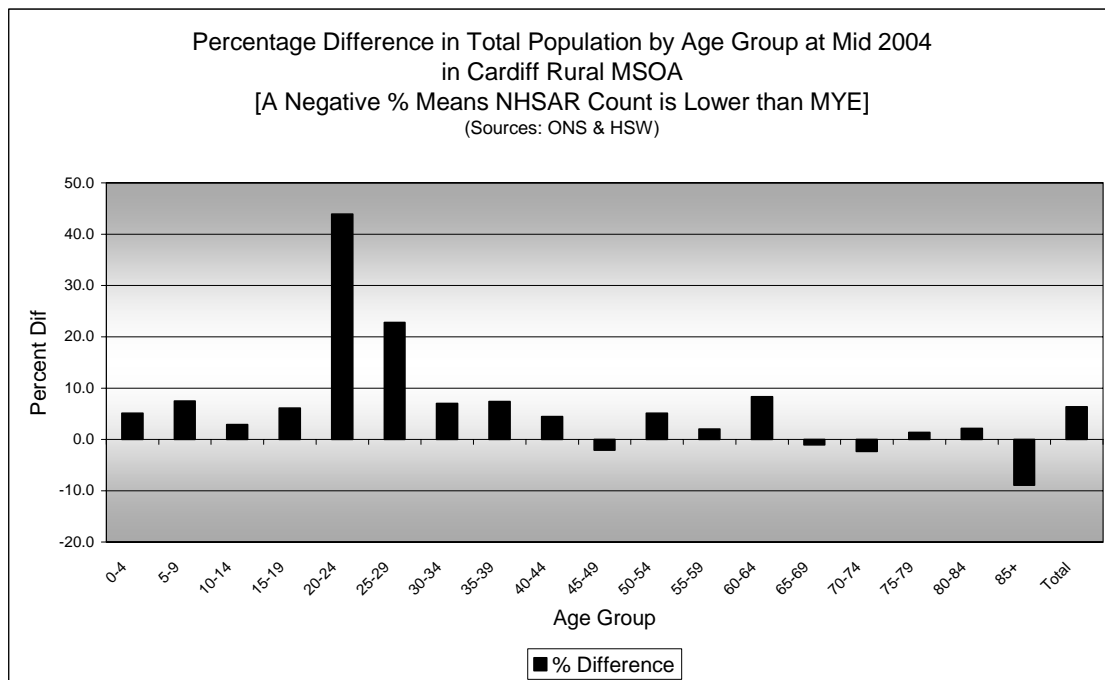
Broad Age Group Comparisons

Comparison of Population Sources by Broad Age Group for Mid 2004 in Cardiff Rural MSOA						
	0-15	16-29	30-44	45-64 Males, 45-59 Females	65+ Males, 60+ Females	All Ages
MYE	1,500	1,000	1,500	2,000	1,100	7,200
NHSAR	1,600	1,300	1,600	2,100	1,100	7,700
Difference #	80	239	95	51	-3	462
Difference %	5.2	22.8	6.1	2.5	-0.3	6.4

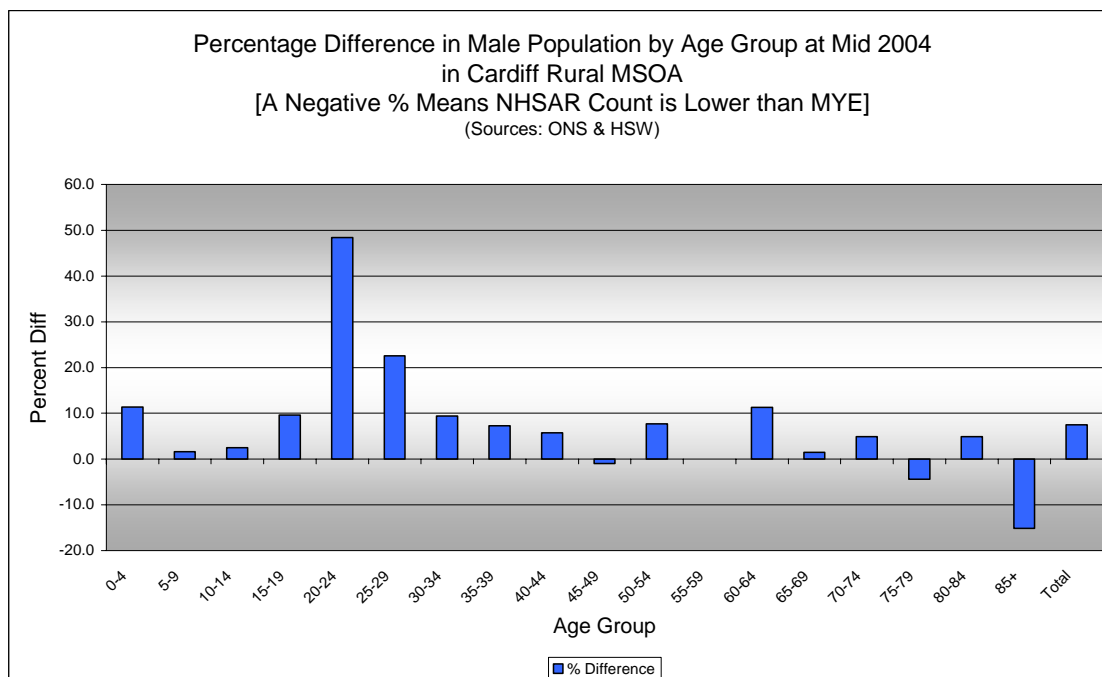
Comparison of Broad Population Age Structures for Mid 2004 by Percentage of Total Population in Cardiff Rural MSOA						
Cardiff Rural	0-15	16-29	30-44	45-64 Males, 45-59 Females	65+ Males, 60+ Females	All Ages
MYE	21.1	14.5	21.4	28.2	14.9	100.0
NHSAR	20.9	16.7	21.3	27.2	13.9	100.0



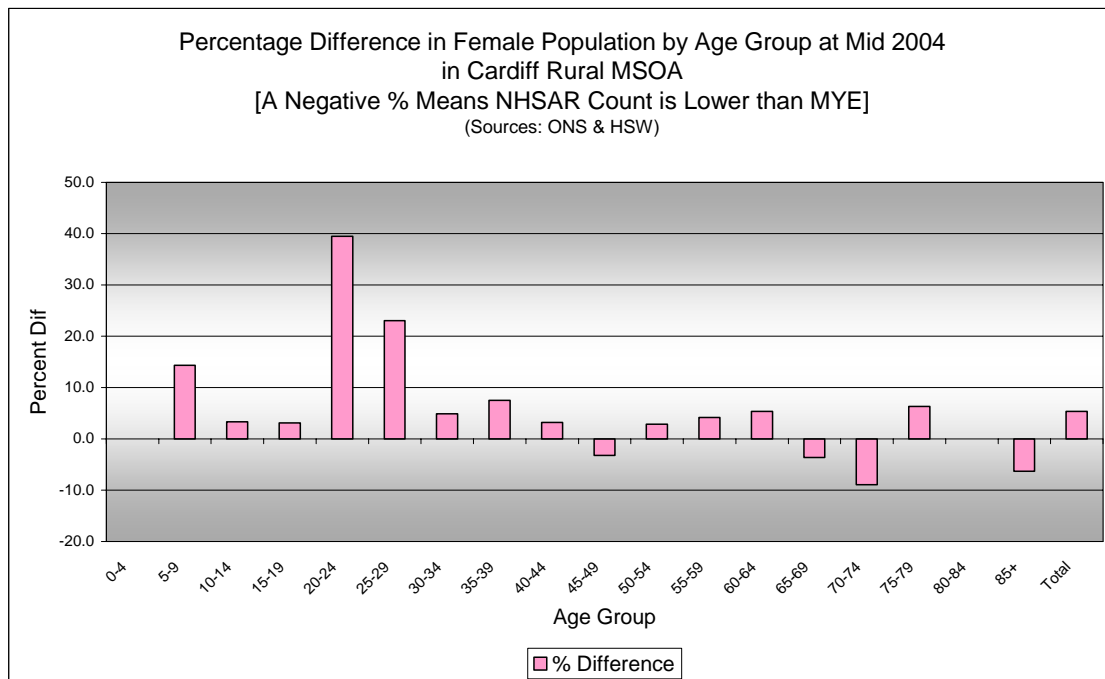
Quinary Age Group Comparisons – 2004 NHSAR Minus MYE



Comparison of Total Population by Age Group at Mid 2004 in Cardiff Rural MSOA [Difference = NHSAR Minus MYE] (Sources: ONS & HSW)				
Age	Persons (MYE)	Persons (NHSAR)	# Difference	% Difference
0-4	400	400	21	5.1
5-9	500	500	34	7.5
10-14	600	600	16	2.9
15-19	500	500	30	6.1
20-24	300	400	134	43.9
25-29	400	500	84	22.8
30-34	400	500	30	7.0
35-39	500	600	38	7.4
40-44	600	600	27	4.5
45-49	600	600	-13	-2.1
50-54	600	600	30	5.1
55-59	600	700	13	2.0
60-64	400	400	31	8.3
65-69	300	300	-3	-1.1
70-74	200	200	-5	-2.3
75-79	100	100	2	1.4
80-84	100	100	3	2.1
85+	100	100	-10	-8.9
Total	7,200	7,700	462	6.4



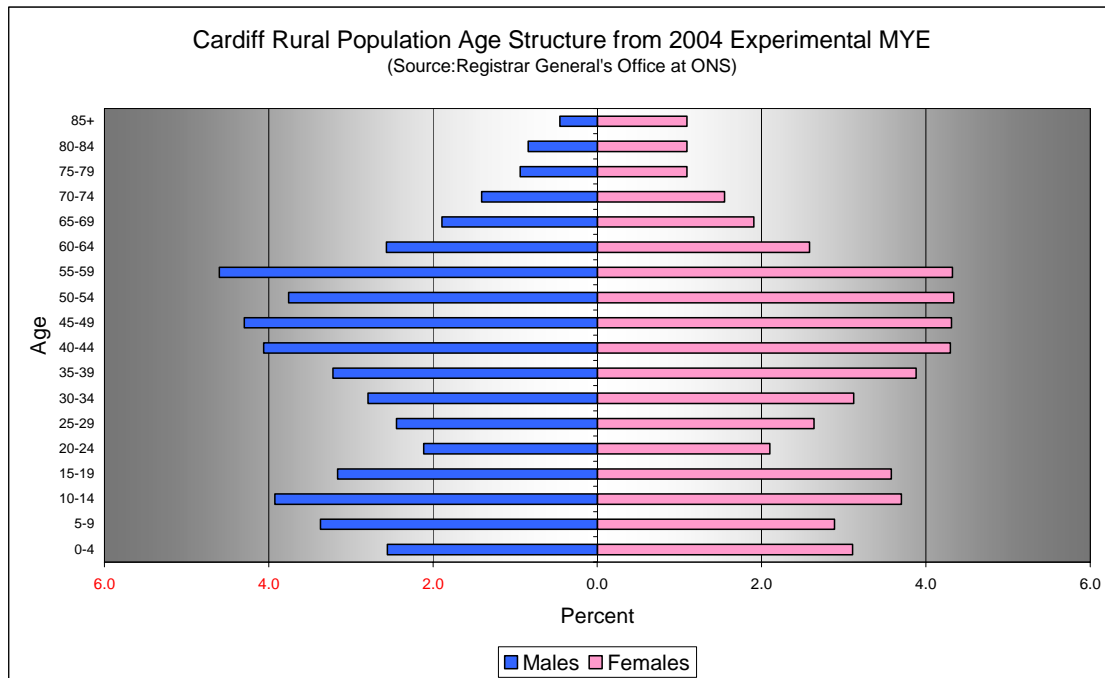
Comparison of Male Population by Age Group at Mid 2004 in Cardiff Rural MSOA [Difference = NHSAR Minus MYE] (Sources: ONS & HSW)				
Age	Males (MYE)	Males (NHSAR)	# Difference	% Difference
0-4	200	200	21	11.4
5-9	200	200	4	1.6
10-14	300	300	7	2.5
15-19	200	300	22	9.6
20-24	200	200	74	48.4
25-29	200	200	40	22.6
30-34	200	200	19	9.4
35-39	200	300	17	7.3
40-44	300	300	17	5.8
45-49	300	300	-3	-1.0
50-54	300	300	21	7.7
55-59	300	300	0	0.0
60-64	200	200	21	11.3
65-69	100	100	2	1.5
70-74	100	100	5	4.9
75-79	100	100	-3	-4.4
80-84	100	100	3	4.9
85+	50	50	-5	-15.2
Total	3,500	3,800	262	7.5



Comparison of Female Population by Age Group at Mid 2004 in Cardiff Rural MSOA
[Difference = NHSAR Minus MYE] (Sources: ONS & HSW)

Age	Females (MYE)	Females (NHSAR)	# Difference	% Difference
0-4	200	200	0	0.0
5-9	200	200	30	14.4
10-14	300	300	9	3.4
15-19	300	300	8	3.1
20-24	200	200	60	39.5
25-29	200	200	44	23.0
30-34	200	200	11	4.9
35-39	300	300	21	7.5
40-44	300	300	10	3.2
45-49	300	300	-10	-3.2
50-54	300	300	9	2.9
55-59	300	300	13	4.2
60-64	200	200	10	5.3
65-69	100	100	-5	-3.6
70-74	100	100	-10	-8.9
75-79	100	100	5	6.3
80-84	100	100	0	0.0
85+	100	100	-5	-6.3
Total	3,700	3,900	200	5.4

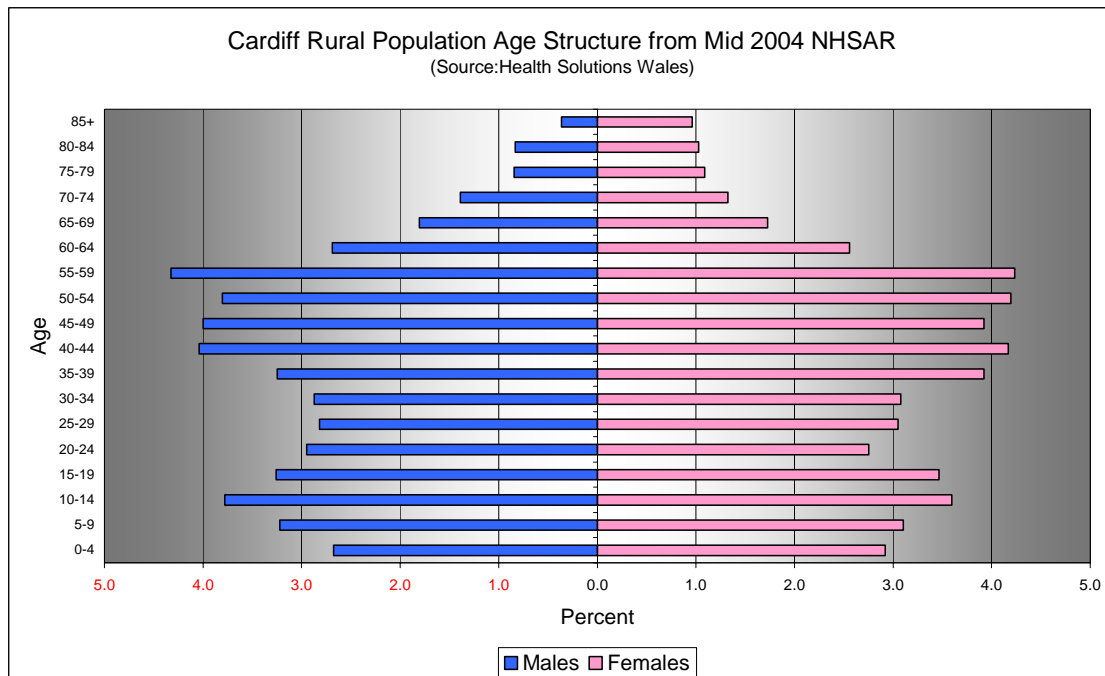
Quinary Population Age Structure - 2004 MYE



Cardiff Rural MSOA Population Age Structure 2004 MYE (Source: ONS)			
Age	Males	Females	Persons
0-4	200	200	400
5-9	200	200	500
10-14	300	300	600
15-19	200	300	500
20-24	200	200	300
25-29	200	200	400
30-34	200	200	400
35-39	200	300	500
40-44	300	300	600
45-49	300	300	600
50-54	300	300	600
55-59	300	300	600
60-64	200	200	400
65-69	100	100	300
70-74	100	100	200
75-79	100	100	100
80-84	100	100	100
85+	50	100	100
Total	3,500	3,700	7,200

Cardiff Rural MSOA Population Age Structure 2004 MYE – Percentage of total Persons (Source: ONS)			
Age	Males	Females	Persons
0-4	2.6	3.1	5.7
5-9	3.4	2.9	6.3
10-14	3.9	3.7	7.6
15-19	3.2	3.6	6.7
20-24	2.1	2.1	4.2
25-29	2.4	2.6	5.1
30-34	2.8	3.1	5.9
35-39	3.2	3.9	7.1
40-44	4.1	4.3	8.4
45-49	4.3	4.3	8.6
50-54	3.8	4.3	8.1
55-59	4.6	4.3	8.9
60-64	2.6	2.6	5.2
65-69	1.9	1.9	3.8
70-74	1.4	1.5	3.0
75-79	0.9	1.1	2.0
80-84	0.8	1.1	1.9
85+	0.5	1.1	1.5
Total	48.4	51.6	100.0

Quinary Population Age Structure Mid 2004 NHSAR



Cardiff Rural MSOA Population Age Structure - NHSAR Mid 2004 (Source: HSW)			
Age	Males	Females	Persons
0-4	200	200	400
5-9	200	200	500
10-14	300	300	600
15-19	300	300	500
20-24	200	200	400
25-29	200	200	500
30-34	200	200	500
35-39	300	300	600
40-44	300	300	600
45-49	300	300	600
50-54	300	300	600
55-59	300	300	700
60-64	200	200	400
65-69	100	100	300
70-74	100	100	200
75-79	100	100	100
80-84	100	100	100
85+	50	100	100
Total	3,800	3,900	7,700

Cardiff Rural MSOA Population Age Structure % of Total Persons - NHSAR Mid 2004 (Source: HSW)			
Age	Males	Females	Persons
0-4	2.7	2.9	5.6
5-9	3.2	3.1	6.3
10-14	3.8	3.6	7.4
15-19	3.3	3.5	6.7
20-24	2.9	2.8	5.7
25-29	2.8	3.1	5.9
30-34	2.9	3.1	5.9
35-39	3.2	3.9	7.2
40-44	4.0	4.2	8.2
45-49	4.0	3.9	7.9
50-54	3.8	4.2	8.0
55-59	4.3	4.2	8.6
60-64	2.7	2.6	5.2
65-69	1.8	1.7	3.5
70-74	1.4	1.3	2.7
75-79	0.8	1.1	1.9
80-84	0.8	1.0	1.9
85+	0.4	1.0	1.3
Total	48.9	51.1	100.0