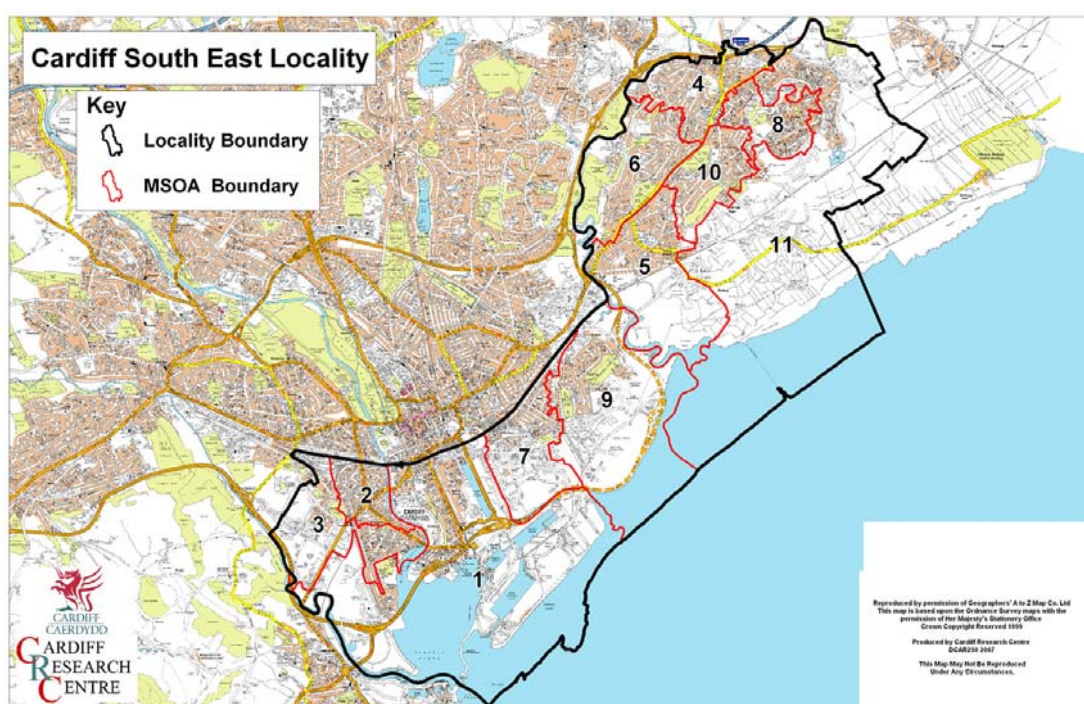


## Cardiff South East Locality Area

A comparison of Population Age Structure's for Mid 2004 from the National Statistics experimental Mid Year Estimate and the National Health Service Administrative Records (NHSAR)

Figure: Cardiff South East Locality



1 = Butetown; 2 = Grangetown; 3 = Leckwith; 4 = North Llanrumney ; 5 = Rumney;  
6 = South Llanrumney; 7 = Splott; 8 = St Mellons; 9 = Tremorfa; 10 = Trowbridge &  
11 = Wentloog

**Disclosure Control:** Due to a requirement to observe the Registrar General's disclosure control protocols for experimental and official Mid Year Estimates of population it has been necessary to round population figures provided in this profile to the nearest 100 persons. Due to the danger of disclosure by difference the NHSAR population figures in this brief have also been rounded to the nearest 100 persons. For both datasets, when the population estimate was less than 50 persons, the value of 50 has been used. However, it is important to note that all graphics and the percentages presented in this profile have been produced using raw un-rounded estimates. The difference between NHSAR and MYE population estimates are also presented here in their un-rounded raw format.

## Summary Key Statistics Page

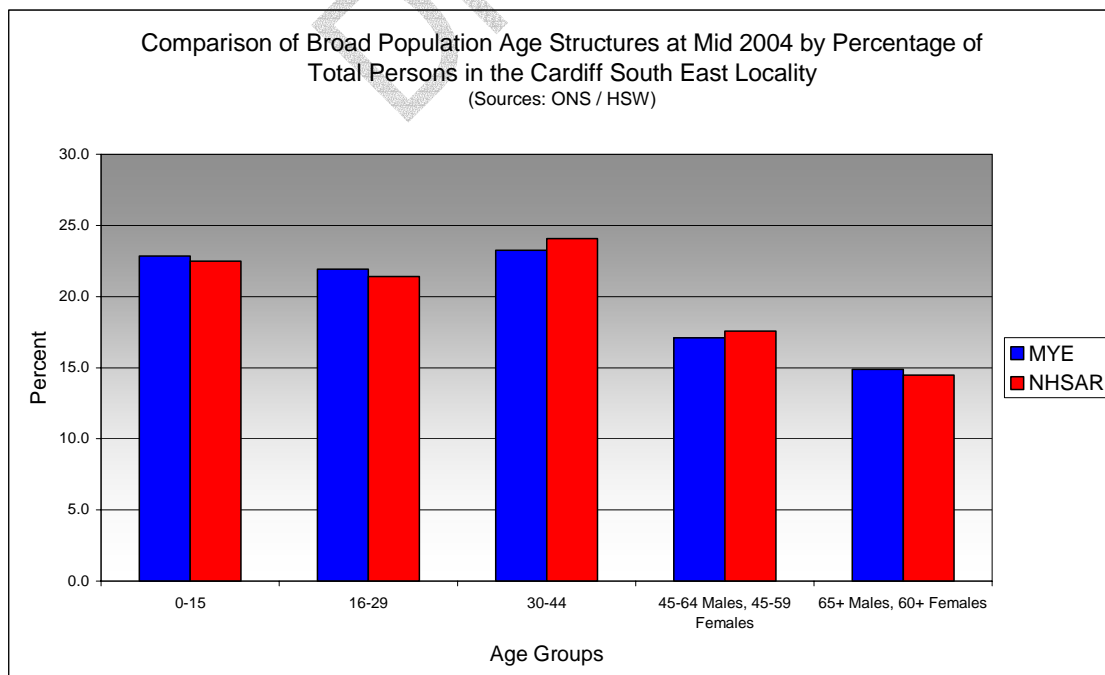
- In the Cardiff South East Locality total NHSAR population at Mid 2004 was 7.4% (approximately 5,200 persons) higher than the experimental Mid Year Estimate.
- Total male NHSAR population was 11.6% higher, while total female population was 3.4% higher.
- NHSAR population counts showed the greatest variance from the Experimental MYEs in the following age groups: 40 to 44 years 13.8% higher and 45 to 49 years 13.0% higher. The NHSAR count is higher in all but one age group within the locality, the exception being those aged 80 to 84.
- The Cardiff South East Locality is ranked 1<sup>st</sup> (MYE) and 1<sup>st</sup> (NHSAR) out of 4 Localities in Cardiff for it's total dependency ratio. This means it has the highest dependency ratio of the four localities in Cardiff according to the MYE & NHSAR population age structure. The locality has higher ratios than the Cardiff averages but lower ratios than the Wales averages.
- The Cardiff South East Locality is ranked 2<sup>nd</sup> (MYE & NHSAR) out of four localities for the total number of younger dependents aged 0 – 14 resident within the area.
- The locality is ranked 3<sup>rd</sup> (MYE) and 4<sup>th</sup> (NHSAR) out of four localities for the total number of older residents aged 65 and over resident in the locality.
- A significant majority of dependent age group population (0 to 14 and 65 and over) are younger dependents aged 0 to 14, representing 62.4% (MYE) and 62.5% (NHSAR) of total dependents.

<b>Dependency Ratios at Mid 2004 in the Cardiff South East Locality</b> (Sources: Derived from Data Supplied by ONS & HSW)		
	<b>MYE</b>	<b>NHSAR</b>
<b>Dependents Aged 0 - 14</b>	15,100	16,000
<b>Dependents Aged 65 Plus</b>	9,100	9,600
<b>Total Dependents</b>	24,200	25,500
<b>Persons Aged 15 to 64</b>	46,400	50,300
<b>Total Persons</b>	70,700	75,900
<b>Cardiff South East Dependency Ratio</b>	0.52	0.51
<b>Cardiff Dependency Ratio</b>	0.47	0.43
<b>Wales Dependency Ratio</b>	0.57	0.52

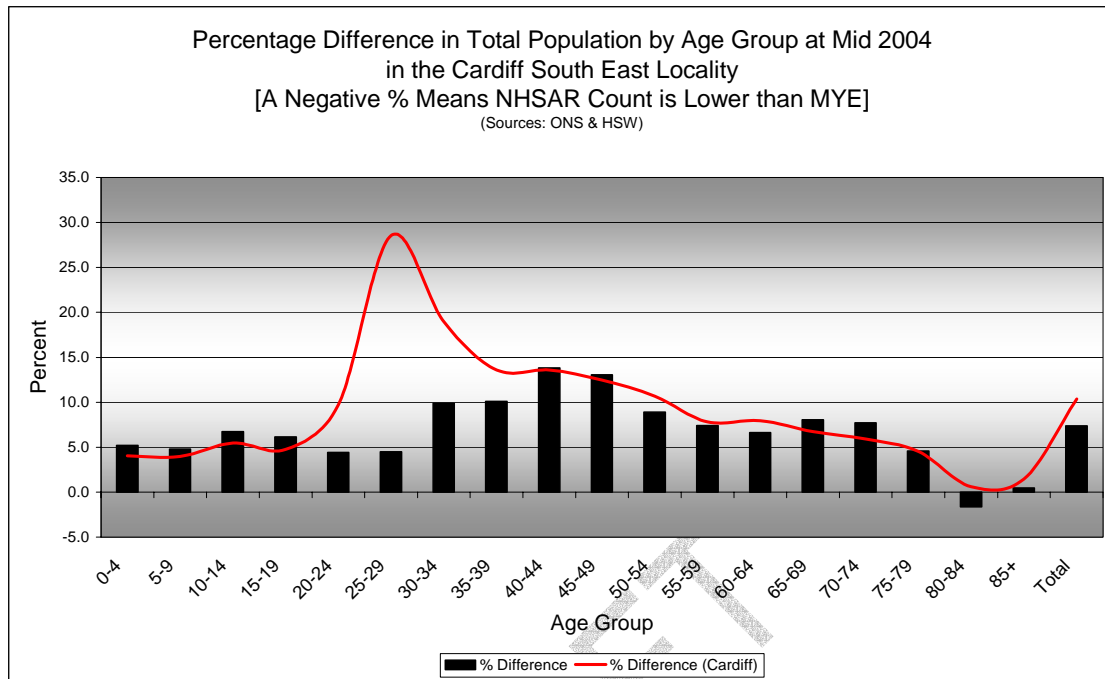
## Broad Age Group Comparisons

Comparison of Population Sources by Broad Age Group for Mid 2004 in the Cardiff South East Locality						
	0-15	16-29	30-44	45-64 Males, 45-59 Females	65+ Males, 60+ Females	All Ages
<b>MYE</b>	16,100	15,500	16,400	12,100	10,500	70,700
<b>NHSAR</b>	17,100	16,200	18,300	13,300	11,000	75,900
<b>Difference #</b>	918	747	1,836	1,250	461	5,212
<b>Difference %</b>	5.7	4.8	11.2	10.3	4.4	7.4

Comparison of Broad Population Age Structures for Mid 2004 by Percentage of Total Population in the Cardiff South East Locality						
	0-15	16-29	30-44	45-64 Males, 45-59 Females	65+ Males, 60+ Females	All Ages
<b>MYE</b>	22.8	21.9	23.3	17.1	14.9	100.0
<b>NHSAR</b>	22.5	21.4	24.1	17.6	14.5	100.0

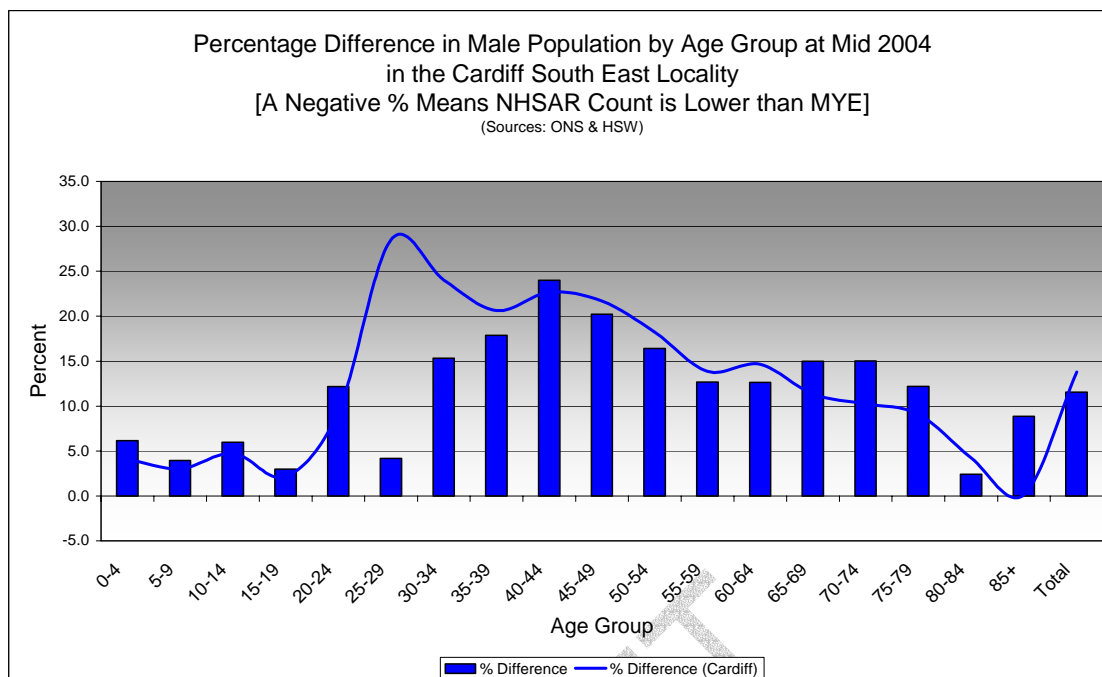


## Quinary Age Group Comparisons – 2004 NHSAR Minus MYE



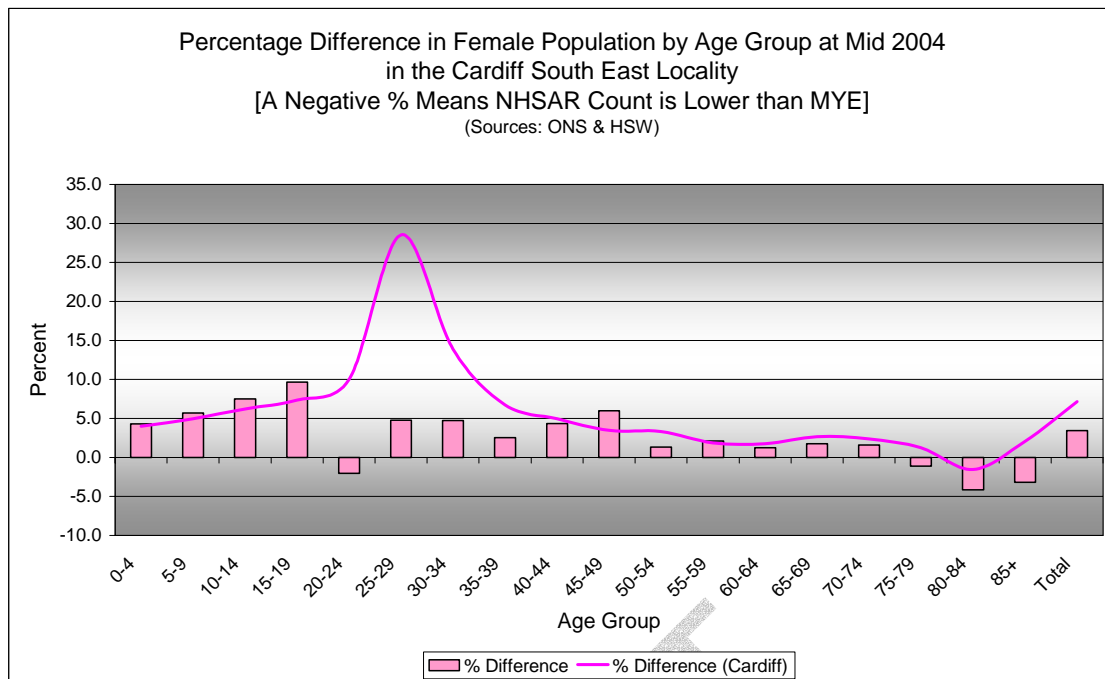
**Comparison of Total Population by Age Group at Mid 2004 in the Cardiff South East Locality**  
[Difference = NHSAR Minus MYE] (Sources: ONS & HSW)

Age	Persons (MYE)	Persons (NHSAR)	# Difference	% Difference
0-4	4,800	5,000	249	5.2
5-9	5,100	5,300	244	4.8
10-14	5,200	5,600	352	6.7
15-19	5,000	5,300	308	6.1
20-24	5,400	5,700	239	4.4
25-29	6,100	6,400	273	4.5
30-34	5,700	6,300	565	9.9
35-39	5,600	6,200	566	10.1
40-44	5,100	5,800	705	13.8
45-49	4,200	4,700	547	13.0
50-54	3,600	3,900	317	8.9
55-59	3,100	3,300	228	7.4
60-64	2,600	2,800	175	6.6
65-69	2,400	2,600	195	8.0
70-74	2,300	2,500	177	7.7
75-79	2,000	2,100	93	4.6
80-84	1,500	1,500	-25	-1.7
85+	900	900	4	0.5
<b>Total</b>	<b>70,700</b>	<b>75,900</b>	<b>5,212</b>	<b>7.4</b>



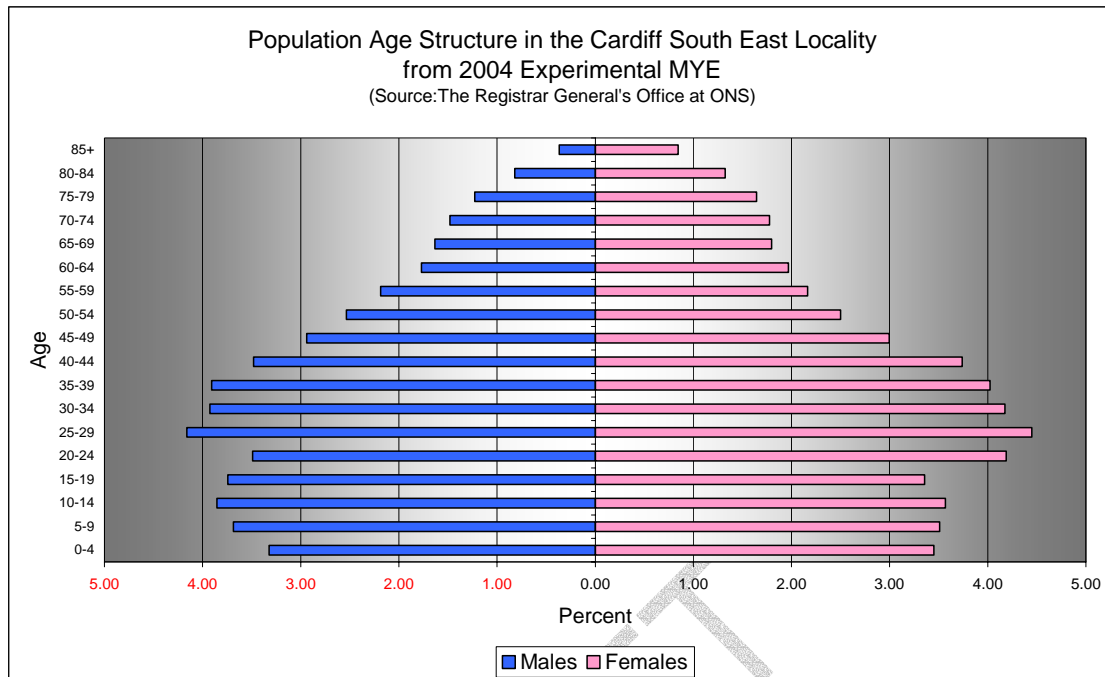
**Comparison of Male Population by Age Group at Mid 2004 in the Cardiff South East Locality**  
[Difference = NHSAR Minus MYE] (Sources: ONS & HSW)

Age	Males (MYE)	Males (NHSAR)	# Difference	% Difference
0-4	2,300	2,500	144	6.1
5-9	2,600	2,700	103	4.0
10-14	2,700	2,900	163	6.0
15-19	2,600	2,700	79	3.0
20-24	2,500	2,800	300	12.2
25-29	2,900	3,100	123	4.2
30-34	2,800	3,200	425	15.3
35-39	2,800	3,300	494	17.9
40-44	2,500	3,100	590	24.0
45-49	2,100	2,500	420	20.2
50-54	1,800	2,100	294	16.4
55-59	1,500	1,700	196	12.7
60-64	1,300	1,400	158	12.6
65-69	1,200	1,300	173	15.0
70-74	1,000	1,200	157	15.0
75-79	900	1,000	106	12.2
80-84	600	600	14	2.4
85+	300	300	23	8.9
<b>Total</b>	<b>34,300</b>	<b>38,300</b>	<b>3,962</b>	<b>11.6</b>



<b>Comparison of Female Population by Age Group at Mid 2004 in the Cardiff South East Locality [Difference = NHSAR Minus MYE] (Sources: ONS &amp; HSW)</b>				
Age	Females (MYE)	Females (NHSAR)	# Difference	% Difference
0-4	2,400	2,500	105	4.3
5-9	2,500	2,600	141	5.7
10-14	2,500	2,700	189	7.5
15-19	2,400	2,600	229	9.7
20-24	3,000	2,900	-61	-2.1
25-29	3,100	3,300	150	4.8
30-34	3,000	3,100	140	4.7
35-39	2,800	2,900	72	2.5
40-44	2,600	2,800	115	4.4
45-49	2,100	2,200	127	6.0
50-54	1,800	1,800	23	1.3
55-59	1,500	1,600	32	2.1
60-64	1,400	1,400	17	1.2
65-69	1,300	1,300	22	1.7
70-74	1,300	1,300	20	1.6
75-79	1,200	1,200	-13	-1.1
80-84	900	900	-39	-4.2
85+	600	600	-19	-3.2
<b>Total</b>	<b>36,400</b>	<b>37,600</b>	<b>1,250</b>	<b>3.4</b>

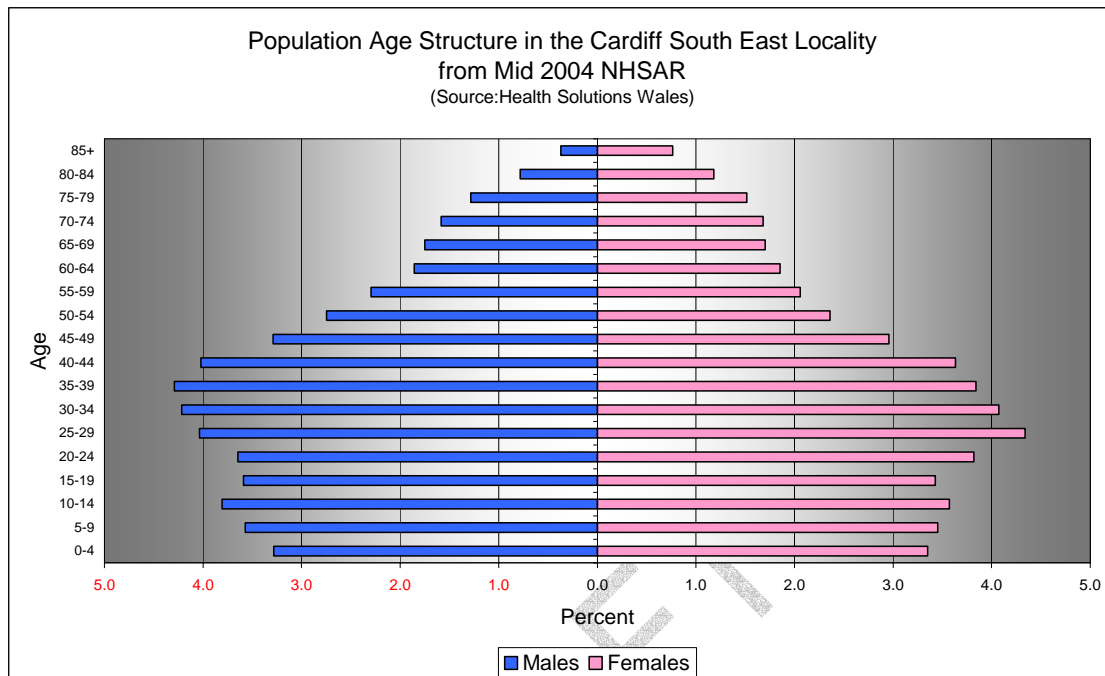
## Quinary Population Age Structure - 2004 MYE



Cardiff South East Locality Population Age Structure 2004 MYE (Source: ONS)			
Age	Males	Females	Persons
0-4	2,300	2,400	4,800
5-9	2,600	2,500	5,100
10-14	2,700	2,500	5,200
15-19	2,600	2,400	5,000
20-24	2,500	3,000	5,400
25-29	2,900	3,100	6,100
30-34	2,800	3,000	5,700
35-39	2,800	2,800	5,600
40-44	2,500	2,600	5,100
45-49	2,100	2,100	4,200
50-54	1,800	1,800	3,600
55-59	1,500	1,500	3,100
60-64	1,300	1,400	2,600
65-69	1,200	1,300	2,400
70-74	1,000	1,300	2,300
75-79	900	1,200	2,000
80-84	600	900	1,500
85+	300	600	900
<b>Total</b>	<b>34,300</b>	<b>36,400</b>	<b>70,700</b>

Cardiff South East Locality Population Age Structure 2004 MYE - Percentage of total Persons (Source: ONS)			
Age	Males	Females	Persons
0-4	3.3	3.4	6.8
5-9	3.7	3.5	7.2
10-14	3.9	3.6	7.4
15-19	3.7	3.4	7.1
20-24	3.5	4.2	7.7
25-29	4.2	4.4	8.6
30-34	3.9	4.2	8.1
35-39	3.9	4.0	7.9
40-44	3.5	3.7	7.2
45-49	2.9	3.0	5.9
50-54	2.5	2.5	5.0
55-59	2.2	2.2	4.4
60-64	1.8	2.0	3.7
65-69	1.6	1.8	3.4
70-74	1.5	1.8	3.3
75-79	1.2	1.6	2.9
80-84	0.8	1.3	2.1
85+	0.4	0.8	1.2
<b>Total</b>	<b>48.5</b>	<b>51.5</b>	<b>100.0</b>

## Quinary Population Age Structure Mid 2004 NHSAR



Cardiff South East Locality Population Age Structure - NHSAR Mid 2004 (Source: HSW)			
Age	Males	Females	Persons
0-4	2,500	2,500	5,000
5-9	2,700	2,600	5,300
10-14	2,900	2,700	5,600
15-19	2,700	2,600	5,300
20-24	2,800	2,900	5,700
25-29	3,100	3,300	6,400
30-34	3,200	3,100	6,300
35-39	3,300	2,900	6,200
40-44	3,100	2,800	5,800
45-49	2,500	2,200	4,700
50-54	2,100	1,800	3,900
55-59	1,700	1,600	3,300
60-64	1,400	1,400	2,800
65-69	1,300	1,300	2,600
70-74	1,200	1,300	2,500
75-79	1,000	1,200	2,100
80-84	600	900	1,500
85+	300	600	900
<b>Total</b>	<b>38,300</b>	<b>37,600</b>	<b>75,900</b>

South East Cardiff Locality Population Age Structure % of Total Persons - NHSAR Mid 2004 (Source: HSW)			
Age	Males	Females	Persons
0-4	3.3	3.4	6.6
5-9	3.6	3.5	7.0
10-14	3.8	3.6	7.4
15-19	3.6	3.4	7.0
20-24	3.6	3.8	7.5
25-29	4.0	4.3	8.4
30-34	4.2	4.1	8.3
35-39	4.3	3.8	8.1
40-44	4.0	3.6	7.7
45-49	3.3	3.0	6.2
50-54	2.7	2.4	5.1
55-59	2.3	2.1	4.4
60-64	1.9	1.9	3.7
65-69	1.7	1.7	3.5
70-74	1.6	1.7	3.3
75-79	1.3	1.5	2.8
80-84	0.8	1.2	2.0
85+	0.4	0.8	1.1
<b>Total</b>	<b>50.4</b>	<b>49.6</b>	<b>100.0</b>