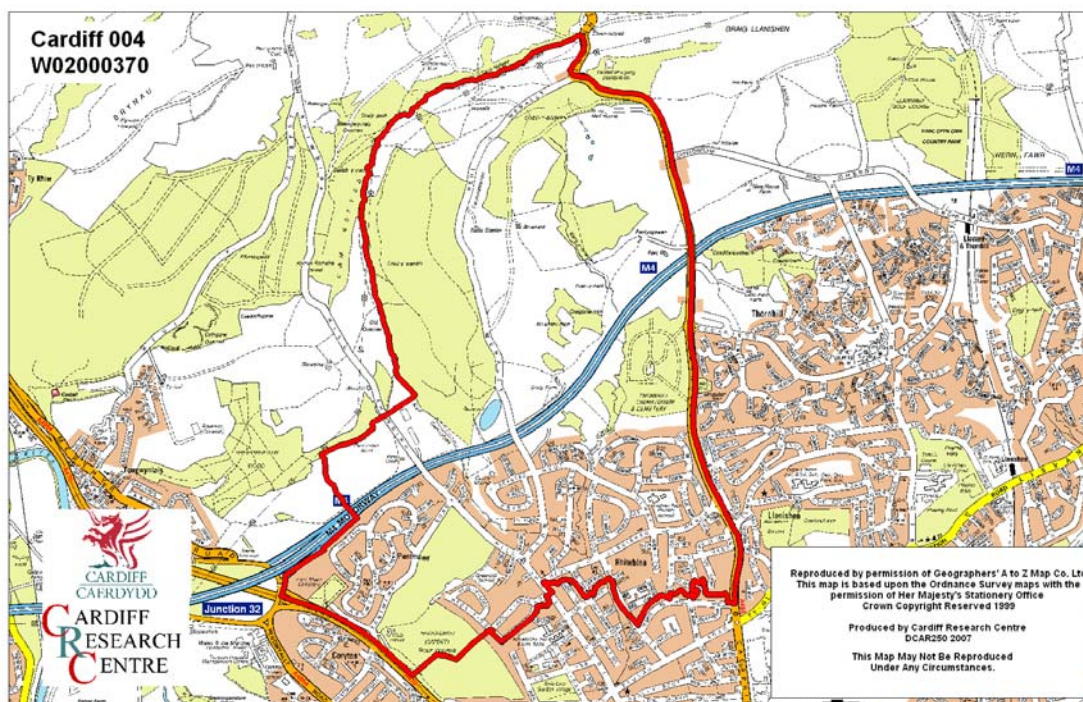


Deri Middle Super Output Area

A comparison of Population Age Structure's for Mid 2004 from the National Statistics experimental Mid Year Estimate and the National Health Service Administrative Records (NHSAR)

Figure: Deri MSOA (Cardiff Central Locality)



Disclosure Control: Due to a requirement to observe the Registrar General's disclosure control protocols for experimental and official Mid Year Estimates of population it has been necessary to round population figures provided in this profile to the nearest 100 persons. Due to the danger of disclosure by difference the NHSAR population figures in this brief have also been rounded to the nearest 100 persons. For both datasets, when the population estimate was less than 50 persons, the value of 50 has been used. However, it is important to note that all graphics and the percentages presented in this profile have been produced using raw un-rounded estimates. The difference between NHSAR and MYE population estimates are also presented here in their un-rounded raw format.

Summary Key Statistics

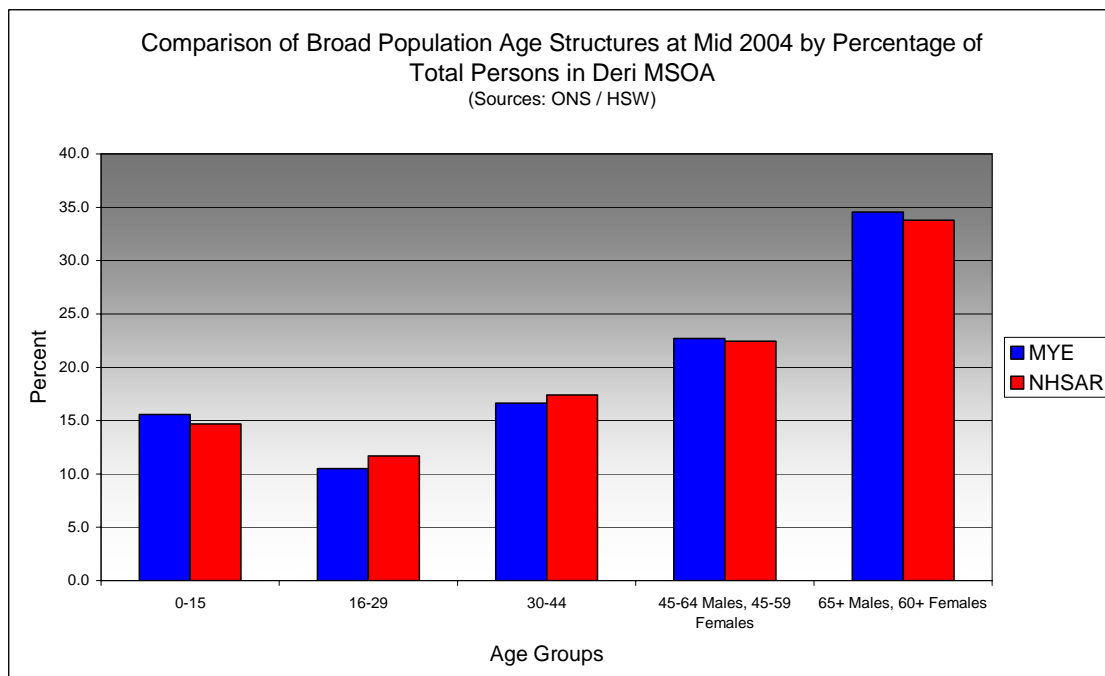
- In Deri total NHSAR population at Mid 2004 was 3.5% (approximately 200 persons) higher than the experimental Mid Year Estimate.
- Total male NHSAR population was 3.6% higher, while total female population was 3.3% higher.
- NHSAR population counts showed the greatest variance from the Experimental MYEs in the following age groups: 25 to 29 years 36.3% higher & 20 to 24 years 25.9% higher.
- Deri is ranked 1st (MYE & NHSAR) out of 47 MSOAs in Cardiff for it's total dependency ratio.
- Within the Cardiff North Locality Deri is ranked 1st (MYE & NHSAR) out of 12 MSOAs for it's total dependency ratio.
- Deri is ranked 40th (MYE) and 41st (NHSAR) out of 47 MSOAs in Cardiff for the total number of younger dependents aged 0 to 14.
- Within it's locality Deri is ranked 11th (MYE & NHSAR) out of 12 MSOAs for the total number of younger dependents aged 0 to 14.
- Deri is ranked 1st (MYE & NHSAR) out of 47 MSOAs for the total number of older dependents aged 65 plus.
- Within it's locality Deri is ranked 1st (MYE & NHSAR) out of 12 MSOAs for the total number of older dependents aged 65 plus.
- The majority of dependent age groups (0 to 14 + 65 and over) are older dependents aged 65 and over, representing 68.9% (MYE) and 69.6% (NHSAR) of total dependents.

Dependency Ratios at Mid 2004 in Deri MSOA (Sources: Derived from Data Supplied by ONS & HSW)		
	MYE	NHSAR
Dependents Aged 0 - 14	900	900
Dependents Aged 65 Plus	2,000	2,000
Total Dependents	2,900	2,900
Persons Aged 15 to 64	3,400	3,700
Total Persons	6,300	6,600
Deri Dependency Ratio	0.84	0.79
Locality Dependency Ratio	0.52	0.48
Cardiff Dependency Ratio	0.47	0.43
Wales Dependency Ratio	0.57	0.52

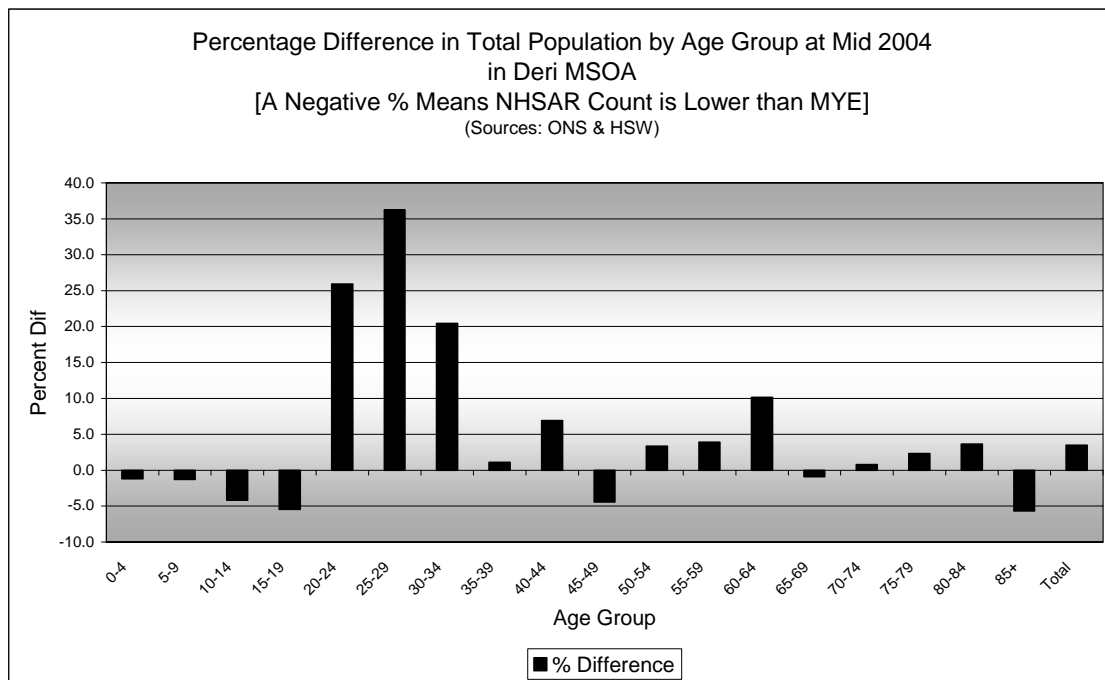
Broad Age Group Comparisons

Comparison of Population Sources by Broad Age Group for Mid 2004 in Deri MSOA						
	0-15	16-29	30-44	45-64 Males, 45-59 Females	65+ Males, 60+ Females	All Ages
MYE	1,000	700	1,100	1,400	2,200	6,300
NHSAR	1,000	800	1,100	1,500	2,200	6,600
Difference #	-24	100	87	32	25	220
Difference %	-2.4	15.0	8.3	2.2	1.1	3.5

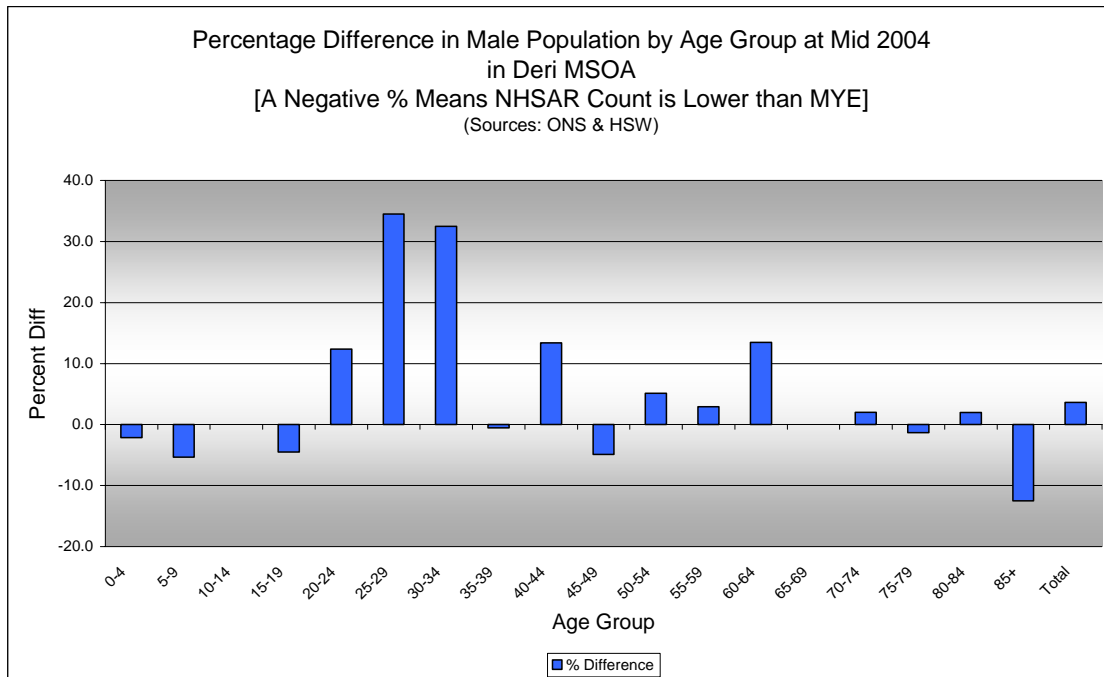
Comparison of Broad Population Age Structures for Mid 2004 by Percentage of Total Population in Deri MSOA						
	0-15	16-29	30-44	45-64 Males, 45-59 Females	65+ Males, 60+ Females	All Ages
MYE	15.6	10.5	16.6	22.7	34.6	100.0
NHSAR	14.7	11.7	17.4	22.4	33.8	100.0



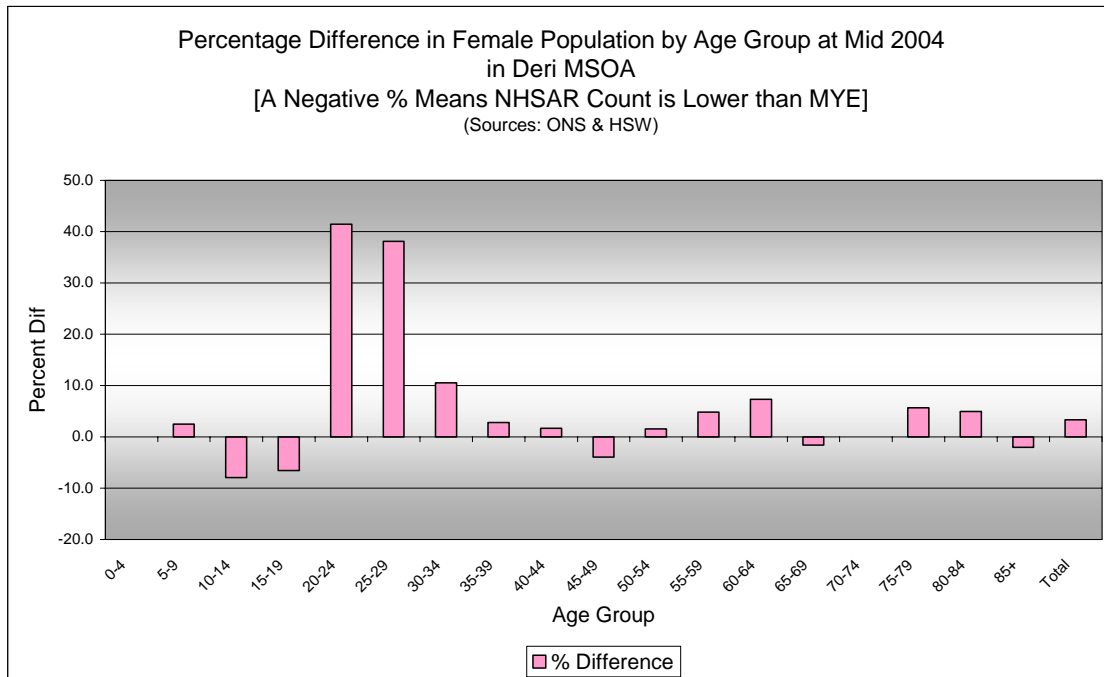
Quinary Age Group Comparisons – 2004 NHSAR Minus MYE



Comparison of Total Population by Age Group at Mid 2004 in Deri MSOA [Difference = NHSAR Minus MYE] (Sources: ONS & HSW)				
Age	Persons (MYE)	Persons (NHSAR)	# Difference	Difference %
0-4	300	300	-3	-1.2
5-9	300	300	-4	-1.3
10-14	300	300	-14	-4.2
15-19	400	300	-20	-5.4
20-24	200	300	55	25.9
25-29	200	200	62	36.3
30-34	300	300	53	20.5
35-39	400	400	4	1.1
40-44	400	500	30	6.9
45-49	500	400	-20	-4.4
50-54	400	400	13	3.3
55-59	400	500	17	3.9
60-64	400	400	36	10.2
65-69	400	400	-4	-0.9
70-74	500	500	4	0.8
75-79	500	500	11	2.3
80-84	400	400	13	3.7
85+	200	200	-13	-5.7
Total	6,300	6,600	220	3.5

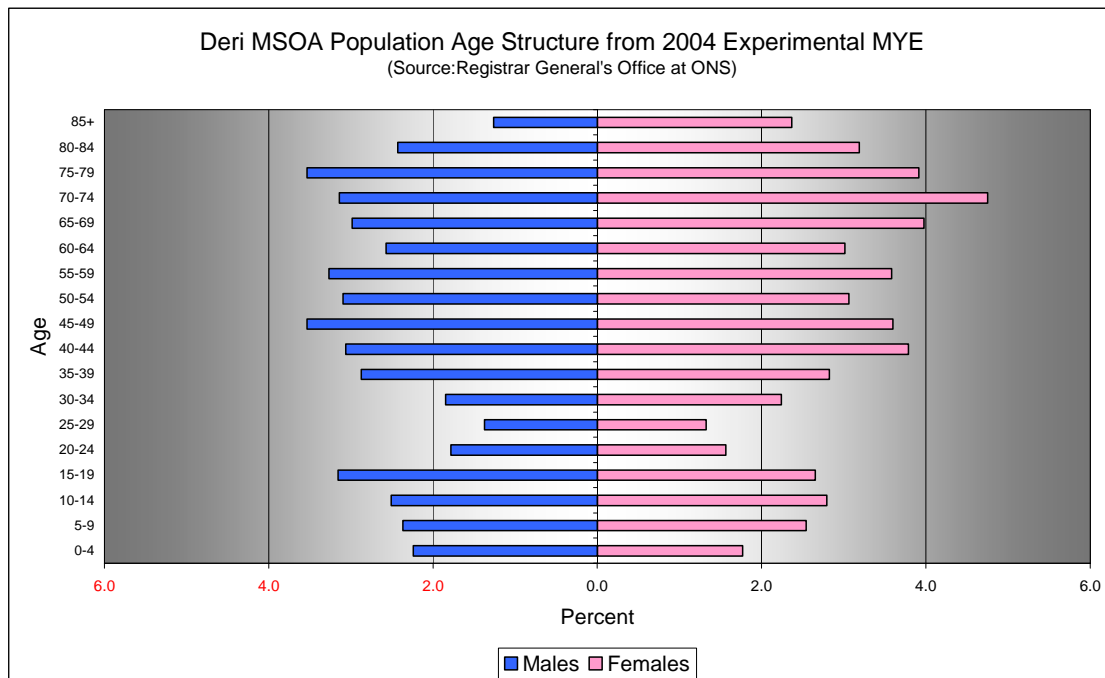


Comparison of Male Population by Age Group at Mid 2004 in Deri MSOA [Difference = NHSAR Minus MYE] (Sources: ONS & HSW)				
Age	Males (MYE)	Males (NHSAR)	# Difference	% Difference
0-4	100	100	-3	-2.1
5-9	200	100	-8	-5.3
10-14	200	200	0	0.0
15-19	200	200	-9	-4.5
20-24	100	100	14	12.4
25-29	100	100	30	34.5
30-34	100	200	38	32.5
35-39	200	200	-1	-0.5
40-44	200	200	26	13.4
45-49	200	200	-11	-4.9
50-54	200	200	10	5.1
55-59	200	200	6	2.9
60-64	200	200	22	13.5
65-69	200	200	0	0.0
70-74	200	200	4	2.0
75-79	200	200	-3	-1.3
80-84	200	200	3	1.9
85+	100	100	-10	-12.5
Total	3,000	3,100	108	3.6



Comparison of Female Population by Age Group at Mid 2004 in Deri MSOA [Difference = NHSAR Minus MYE] (Sources: ONS & HSW)				
Age	Females (MYE)	Females (NHSAR)	# Difference	% Difference
0-4	100	100	0	0.0
5-9	200	200	4	2.5
10-14	200	200	-14	-7.9
15-19	200	200	-11	-6.5
20-24	100	100	41	41.4
25-29	100	100	32	38.1
30-34	100	200	15	10.6
35-39	200	200	5	2.8
40-44	200	200	4	1.7
45-49	200	200	-9	-3.9
50-54	200	200	3	1.5
55-59	200	200	11	4.8
60-64	200	200	14	7.3
65-69	300	200	-4	-1.6
70-74	300	300	0	0.0
75-79	200	300	14	5.6
80-84	200	200	10	5.0
85+	200	100	-3	-2.0
Total	3,400	3,500	112	3.3

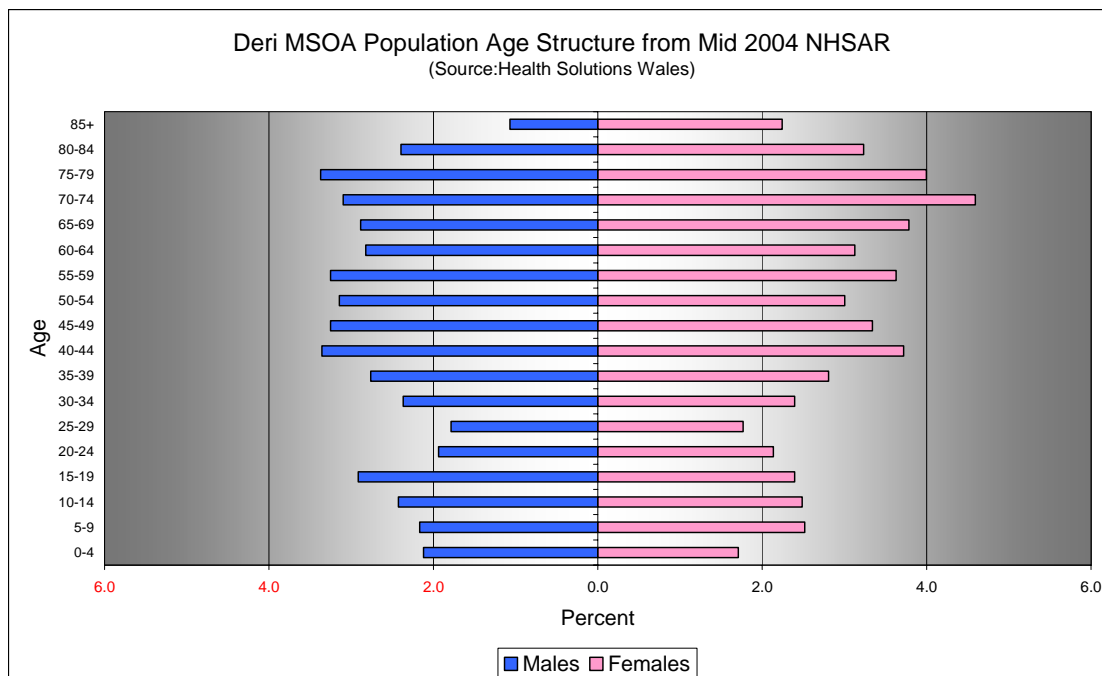
Quinary Population Age Structure - 2004 MYE



Deri MSOA Population Age Structure 2004 MYE (Source: ONS)			
Age	Males	Females	Persons
0-4	100	100	300
5-9	200	200	300
10-14	200	200	300
15-19	200	200	400
20-24	100	100	200
25-29	100	100	200
30-34	100	100	300
35-39	200	200	400
40-44	200	200	400
45-49	200	200	500
50-54	200	200	400
55-59	200	200	400
60-64	200	200	400
65-69	200	300	400
70-74	200	300	500
75-79	200	200	500
80-84	200	200	400
85+	100	200	200
Total	3,000	3,400	6,300

Deri MSOA Population Age Structure 2004 MYE - Percentage of total Persons (Source: ONS)			
Age	Males	Females	Persons
0-4	2.2	1.8	4.0
5-9	2.4	2.5	4.9
10-14	2.5	2.8	5.3
15-19	3.2	2.7	5.8
20-24	1.8	1.6	3.3
25-29	1.4	1.3	2.7
30-34	1.8	2.2	4.1
35-39	2.9	2.8	5.7
40-44	3.1	3.8	6.9
45-49	3.5	3.6	7.1
50-54	3.1	3.1	6.2
55-59	3.3	3.6	6.9
60-64	2.6	3.0	5.6
65-69	3.0	4.0	7.0
70-74	3.1	4.8	7.9
75-79	3.5	3.9	7.5
80-84	2.4	3.2	5.6
85+	1.3	2.4	3.6
Total	47.0	53.0	100.0

Quinary Population Age Structure Mid 2004 NHSAR



Deri MSOA Population Age Structure - NHSAR Mid 2004 (Source: HSW)			
Age	Males	Females	Persons
0-4	100	100	300
5-9	100	200	300
10-14	200	200	300
15-19	200	200	300
20-24	100	100	300
25-29	100	100	200
30-34	200	100	300
35-39	200	200	400
40-44	200	200	500
45-49	200	200	400
50-54	200	200	400
55-59	200	200	500
60-64	200	200	400
65-69	200	300	400
70-74	200	300	500
75-79	200	200	500
80-84	200	200	400
85+	100	200	200
Total	3,100	3,400	6,600

Deri MSOA Population Age Structure % of Total Persons - NHSAR Mid 2004 (Source: HSW)			
Age	Males	Females	Persons
0-4	2.1	1.7	3.8
5-9	2.2	2.5	4.7
10-14	2.4	2.5	4.9
15-19	2.9	2.4	5.3
20-24	1.9	2.1	4.1
25-29	1.8	1.8	3.6
30-34	2.4	2.4	4.8
35-39	2.8	2.8	5.6
40-44	3.4	3.7	7.1
45-49	3.2	3.3	6.6
50-54	3.1	3.0	6.1
55-59	3.2	3.6	6.9
60-64	2.8	3.1	5.9
65-69	2.9	3.8	6.7
70-74	3.1	4.6	7.7
75-79	3.4	4.0	7.4
80-84	2.4	3.2	5.6
85+	1.1	2.2	3.3
Total	47.1	52.9	100.0