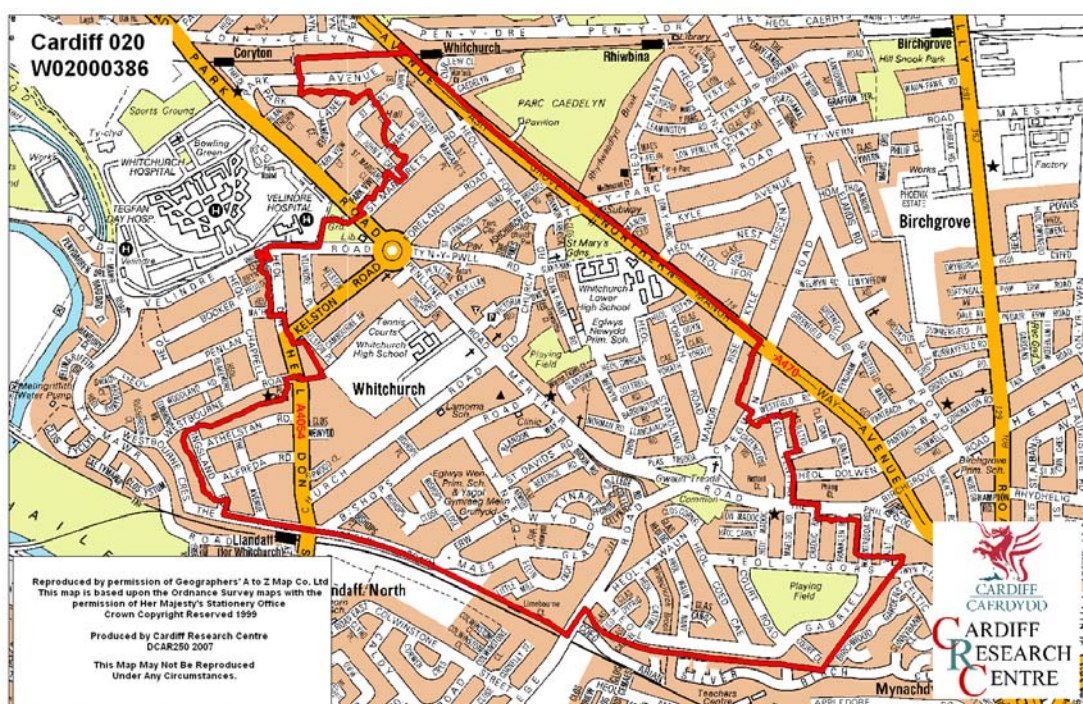


Eglwys Newydd Middle Super Output Area

A comparison of Population Age Structure's for Mid 2004 from the National Statistics experimental Mid Year Estimate and the National Health Service Administrative Records (NHSAR)

Figure: Eglwys Newydd MSOA (Cardiff North Locality)



Disclosure Control: Due to a requirement to observe the Registrar General's disclosure control protocols for experimental and official Mid Year Estimates of population it has been necessary to round population figures provided in this profile to the nearest 100 persons. Due to the danger of disclosure by difference the NHSAR population figures in this brief have also been rounded to the nearest 100 persons. For both datasets, when the population estimate was less than 50 persons, the value of 50 has been used. However, it is important to note that all graphics and the percentages presented in this profile have been produced using raw un-rounded estimates. The difference between NHSAR and MYE population estimates are also presented here in their un-rounded raw format.

Summary Key Statistics

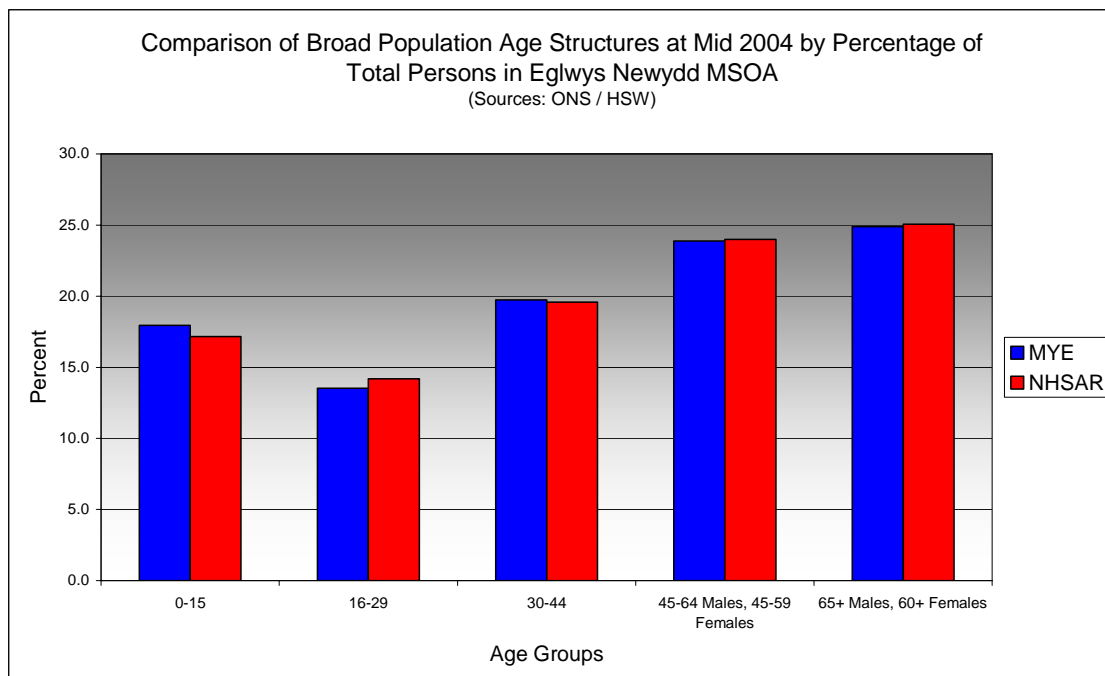
- In Eglwys Newydd total NHSAR population at Mid 2004 was 2.8% (approximately 200 persons) higher than the experimental Mid Year Estimate.
- Total male NHSAR population was 2.6% higher, while total female population was 2.9% higher.
- NHSAR population counts showed the greatest variance from the Experimental MYEs in the following age groups: 20 to 24 years 17.9% higher & those aged 25 to 29 years 15.7% higher.
- Eglwys Newydd is ranked 5th (MYE) and 3rd (NHSAR) out of 47 MSOAs in Cardiff for it's total dependency ratio.
- Within the Cardiff North Locality Eglwys Newydd is ranked 2nd (MYE & NHSAR) out of 12 MSOAs for it's total dependency ratio.
- Eglwys Newydd is ranked 20th (MYE) and 23rd (NHSAR) out of 47 MSOAs in Cardiff for the total number of younger dependents aged 0 to 14.
- Within it's locality Eglwys Newydd is ranked 5th (MYE & NHSAR) out of 12 MSOAs for the total number of younger dependents aged 0 to 14 in the locality.
- Eglwys Newydd is ranked 2nd (MYE & NHSAR) out of 47 MSOAs for the total number of older dependents aged 65 plus.
- Within it's locality Eglwys Newydd is ranked 2nd (MYE & NHSAR) out of 12 MSOAs for the total number of older dependents aged 65 plus.
- The majority of dependent age groups (0 to 14 + 65 and over) are older dependents aged 65 and over, representing 57.3% (MYE) and 58.7% (NHSAR) of total dependents.

Dependency Ratios at Mid 2004 in Eglwys Newydd MSOA (Sources: Derived from Data Supplied by ONS & HSW)		
	MYE	NHSAR
Dependents Aged 0 - 14	1,300	1,200
Dependents Aged 65 Plus	1,700	1,800
Total Dependents	3,000	3,000
Persons Aged 15 to 64	4,700	4,900
Total Persons	7,700	8,000
Eglwys Newydd Dependency Ratio	0.63	0.61
Locality Dependency Ratio	0.52	0.47
Cardiff Dependency Ratio	0.47	0.43
Wales Dependency Ratio	0.57	0.52

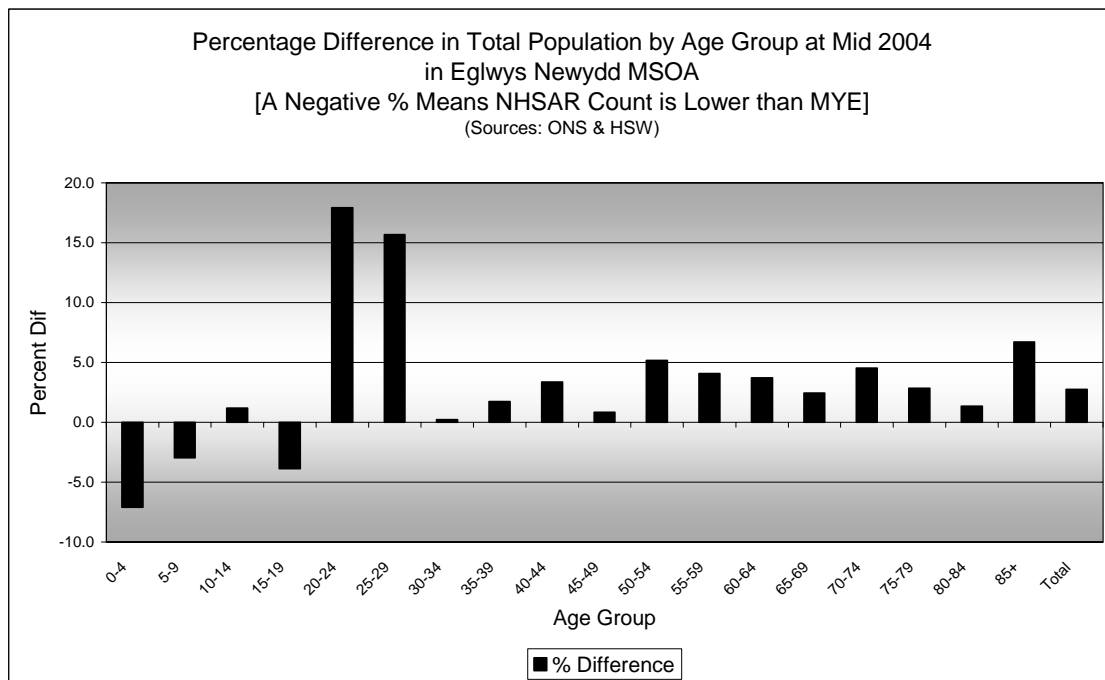
Broad Age Group Comparisons

Comparison of Population Sources by Broad Age Group for Mid 2004 in Eglwys Newydd MSOA						
	0-15	16-29	30-44	45-64 Males, 45-59 Females	65+ Males, 60+ Females	All Ages
MYE	1,400	1,000	1,500	1,900	1,900	7,000
NHSAR	1,400	1,100	1,600	1,900	2,000	8,000
Difference #	-26	83	30	59	67	213
Difference %	-1.9	7.9	2.0	3.2	3.5	2.8

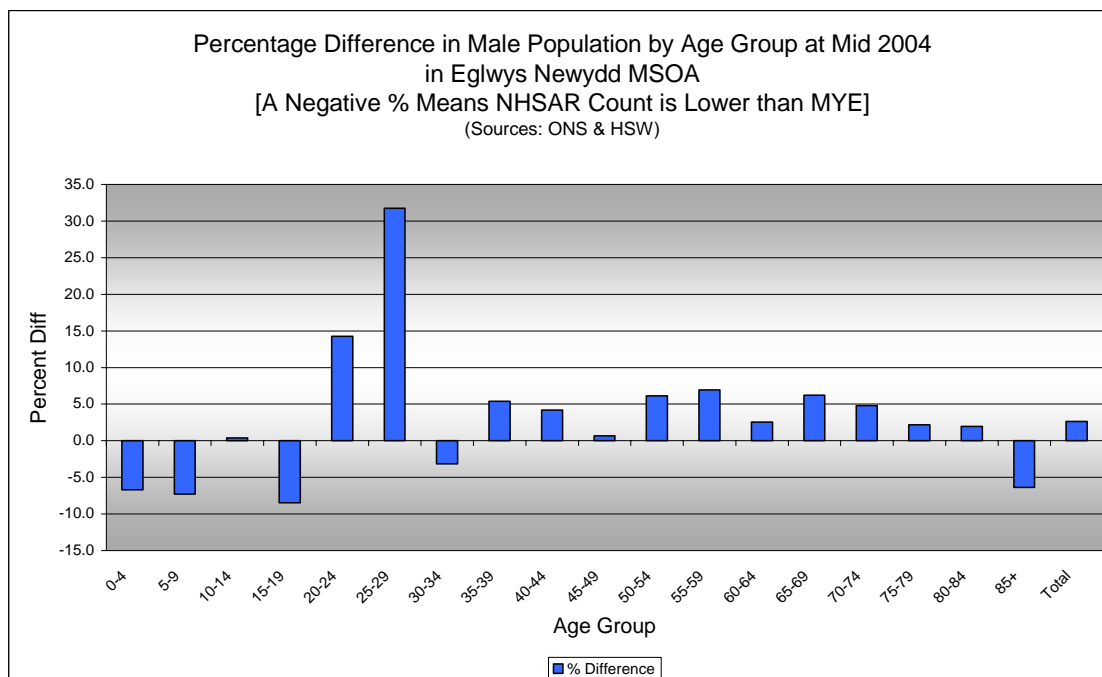
Comparison of Broad Population Age Structures for Mid 2004 by Percentage of Total Population in Eglwys Newydd MSOA						
	0-15	16-29	30-44	45-64 Males, 45-59 Females	65+ Males, 60+ Females	All Ages
MYE	18.0	13.5	19.7	23.9	24.9	100.0
NHSAR	17.2	14.2	19.6	24.0	25.1	100.0



Quinary Age Group Comparisons – 2004 NHSAR Minus MYE

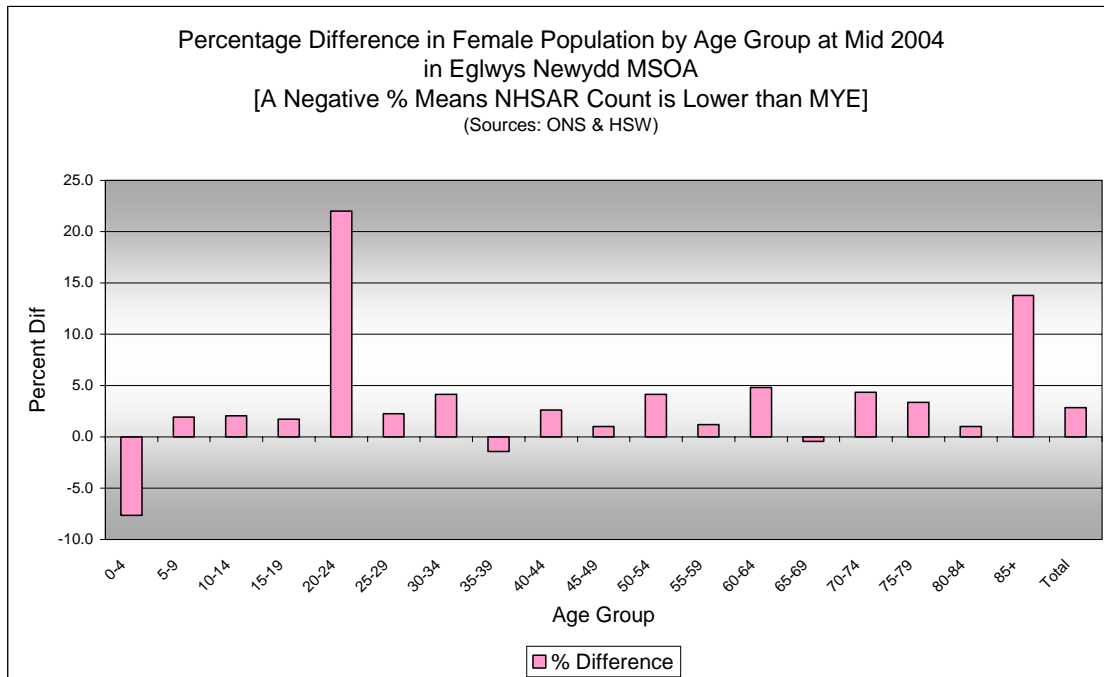


Comparison of Total Population by Age Group at Mid 2004 in Eglwys Newydd MSOA [Difference = NHSAR Minus MYE] (Sources: ONS & HSW)				
Age	Persons (MYE)	Persons (NHSAR)	# Difference	% Difference
0-4	300	300	-24	-7.1
5-9	400	400	-13	-3.0
10-14	500	500	6	1.2
15-19	500	500	-20	-3.9
20-24	300	400	57	17.9
25-29	300	400	51	15.7
30-34	400	400	1	0.2
35-39	500	500	9	1.7
40-44	600	600	20	3.4
45-49	600	600	5	0.8
50-54	500	600	28	5.2
55-59	500	500	21	4.1
60-64	400	400	15	3.7
65-69	400	400	10	2.5
70-74	400	400	19	4.5
75-79	400	400	12	2.9
80-84	300	300	4	1.3
85+	200	200	12	6.7
Total	7,700	8,000	213	2.8



Comparison of Male Population by Age Group at Mid 2004 in Eglwys Newydd MSOA
[Difference = NHSAR Minus MYE] (Sources: ONS & HSW)

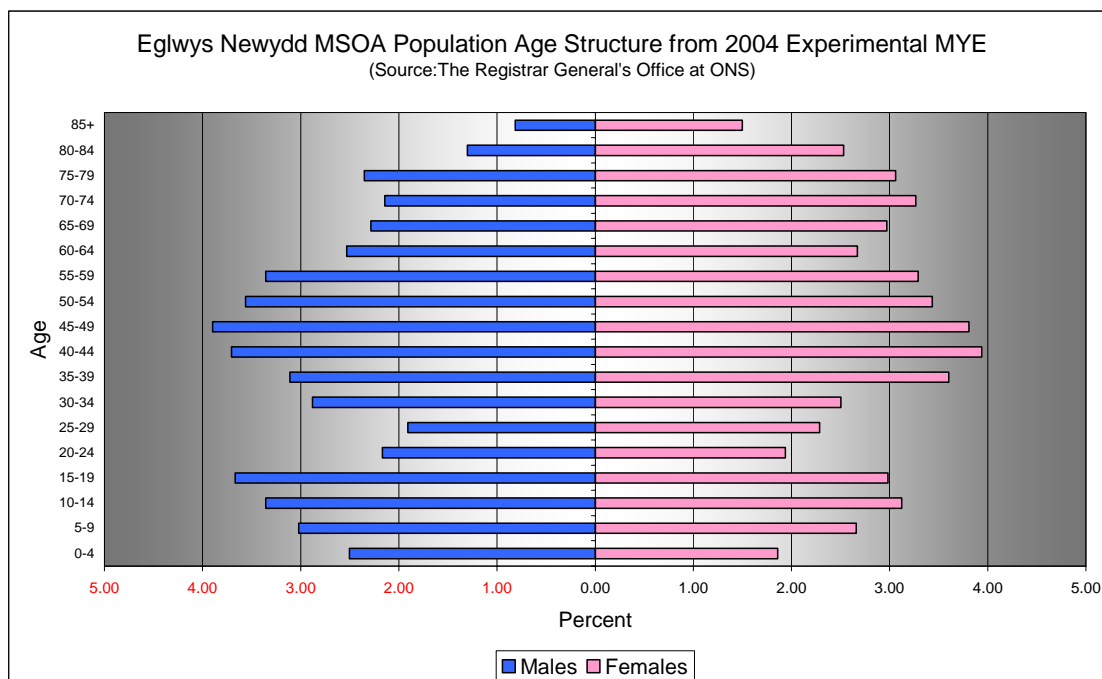
Age	Males (MYE)	Males (NHSAR)	# Difference	% Difference
0-4	200	200	-13	-6.7
5-9	200	200	-17	-7.3
10-14	300	300	1	0.4
15-19	300	300	-24	-8.5
20-24	200	200	24	14.3
25-29	100	200	47	31.8
30-34	200	200	-7	-3.1
35-39	200	300	13	5.4
40-44	300	300	12	4.2
45-49	300	300	2	0.7
50-54	300	300	17	6.2
55-59	300	300	18	6.9
60-64	200	200	5	2.6
65-69	200	200	11	6.2
70-74	200	200	8	4.8
75-79	200	200	4	2.2
80-84	100	100	2	2.0
85+	100	100	-4	-6.3
Total	3,800	3,900	99	2.6



**Comparison of Female Population by Age Group at Mid 2004
in Eglwys Newydd MSOA**
[Difference = NHSAR Minus MYE] (Sources: ONS & HSW)

Age	Females (MYE)	Females (NHSAR)	# Difference	% Difference
0-4	100	100	-11	-7.6
5-9	200	200	4	1.9
10-14	200	200	5	2.1
15-19	200	200	4	1.7
20-24	200	200	33	22.0
25-29	200	200	4	2.3
30-34	200	200	8	4.1
35-39	300	300	-4	-1.4
40-44	300	300	8	2.6
45-49	300	300	3	1.0
50-54	300	300	11	4.1
55-59	300	300	3	1.2
60-64	200	200	10	4.8
65-69	200	200	-1	-0.4
70-74	300	300	11	4.3
75-79	200	200	8	3.4
80-84	200	200	2	1.0
85+	100	100	16	13.8
Total	4,000	4,100	114	2.9

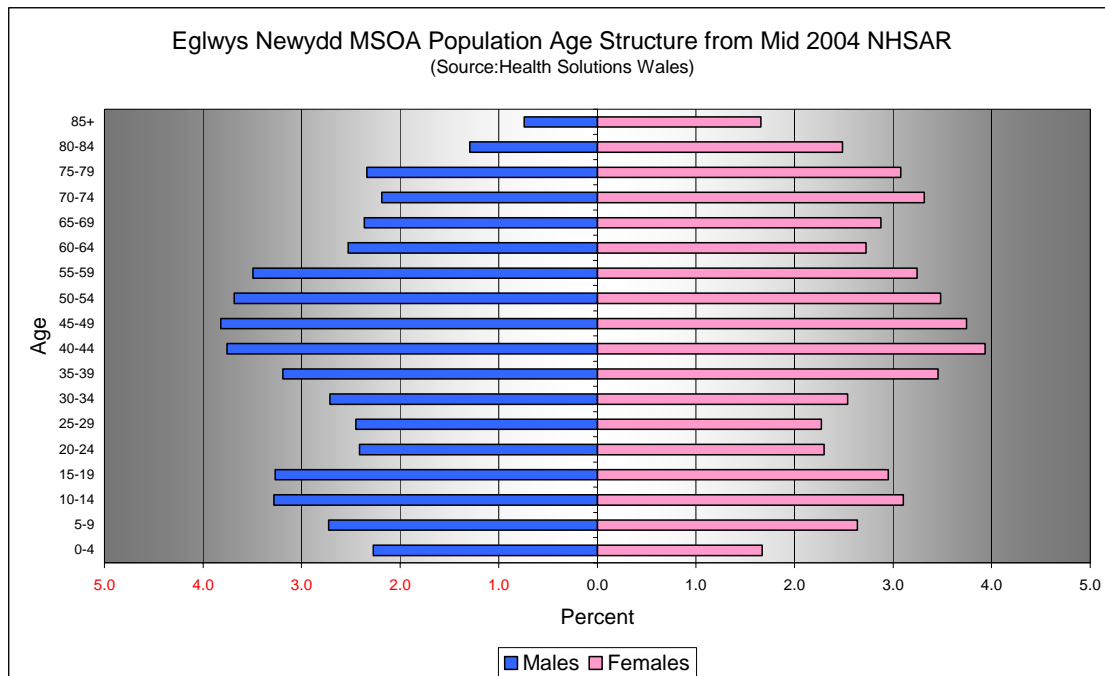
Quinary Population Age Structure - 2004 MYE



Eglwys Newydd MSOA Population Age Structure 2004 MYE (Source: ONS)			
Age	Males	Females	Persons
0-4	200	100	300
5-9	200	200	400
10-14	300	200	500
15-19	300	200	500
20-24	200	200	300
25-29	100	200	300
30-34	200	200	400
35-39	200	300	500
40-44	300	300	600
45-49	300	300	600
50-54	300	300	500
55-59	300	300	500
60-64	200	200	400
65-69	200	200	400
70-74	200	300	400
75-79	200	200	400
80-84	100	200	300
85+	100	100	200
Total	3,800	4,000	7,700

Eglwys Newydd MSOA Population Age Structure 2004 MYE - Percentage of total Persons (Source: ONS)			
Age	Males	Females	Persons
0-4	2.5	1.9	4.4
5-9	3.0	2.7	5.7
10-14	3.4	3.1	6.5
15-19	3.7	3.0	6.6
20-24	2.2	1.9	4.1
25-29	1.9	2.3	4.2
30-34	2.9	2.5	5.4
35-39	3.1	3.6	6.7
40-44	3.7	3.9	7.6
45-49	3.9	3.8	7.7
50-54	3.6	3.4	7.0
55-59	3.4	3.3	6.6
60-64	2.5	2.7	5.2
65-69	2.3	3.0	5.3
70-74	2.1	3.3	5.4
75-79	2.3	3.1	5.4
80-84	1.3	2.5	3.8
85+	0.8	1.5	2.3
Total	48.6	51.4	100.0

Quinary Population Age Structure Mid 2004 NHSAR



Eglwys Newydd MSOA Population Age Structure - NHSAR Mid 2004 (Source: HSW)			
Age	Males	Females	Persons
0-4	200	100	300
5-9	200	200	400
10-14	300	200	500
15-19	300	200	500
20-24	200	200	400
25-29	200	200	400
30-34	200	200	400
35-39	300	300	500
40-44	300	300	600
45-49	300	300	600
50-54	300	300	600
55-59	300	300	500
60-64	200	200	400
65-69	200	200	400
70-74	200	300	400
75-79	200	200	400
80-84	100	200	300
85+	100	100	200
Total	3,900	4,100	8,000

Eglwys Newydd MSOA Population Age Structure % of Total Persons - NHSAR Mid 2004 (Source: HSW)			
Age	Males	Females	Persons
0-4	2.3	1.7	3.9
5-9	2.7	2.6	5.4
10-14	3.3	3.1	6.4
15-19	3.3	3.0	6.2
20-24	2.4	2.3	4.7
25-29	2.5	2.3	4.7
30-34	2.7	2.5	5.3
35-39	3.2	3.5	6.6
40-44	3.8	3.9	7.7
45-49	3.8	3.7	7.6
50-54	3.7	3.5	7.2
55-59	3.5	3.2	6.7
60-64	2.5	2.7	5.3
65-69	2.4	2.9	5.2
70-74	2.2	3.3	5.5
75-79	2.3	3.1	5.4
80-84	1.3	2.5	3.8
85+	0.7	1.7	2.4
Total	48.5	51.5	100.0