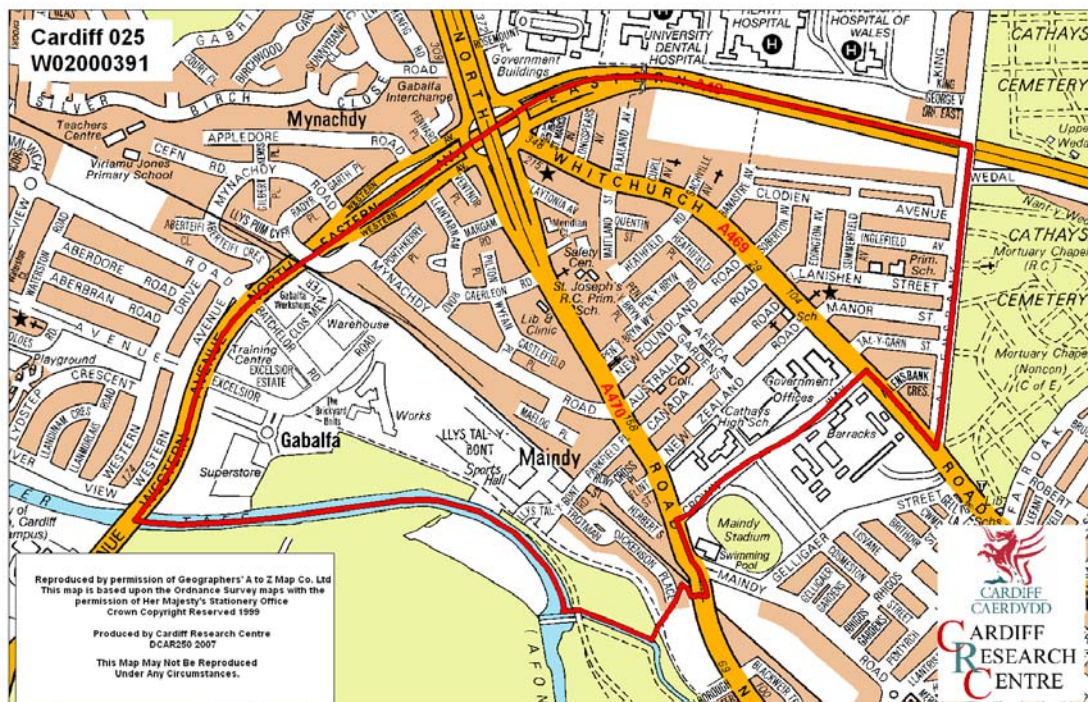


Gabalfa Middle Super Output Area

A comparison of Population Age Structure's for Mid 2004 from the National Statistics experimental Mid Year Estimate and the National Health Service Administrative Records (NHSAR)

Figure: Gabalfa MSOA (Cardiff North Locality)



Disclosure Control: Due to a requirement to observe the Registrar General's disclosure control protocols for experimental and official Mid Year Estimates of population it has been necessary to round population figures provided in this profile to the nearest 100 persons. Due to the danger of disclosure by difference the NHSAR population figures in this brief have also been rounded to the nearest 100 persons. For both datasets, when the population estimate was less than 50 persons, the value of 50 has been used. However, it is important to note that all graphics and the percentages presented in this profile have been produced using raw un-rounded estimates. The difference between NHSAR and MYE population estimates are also presented here in their un-rounded raw format.

Summary Key Statistics

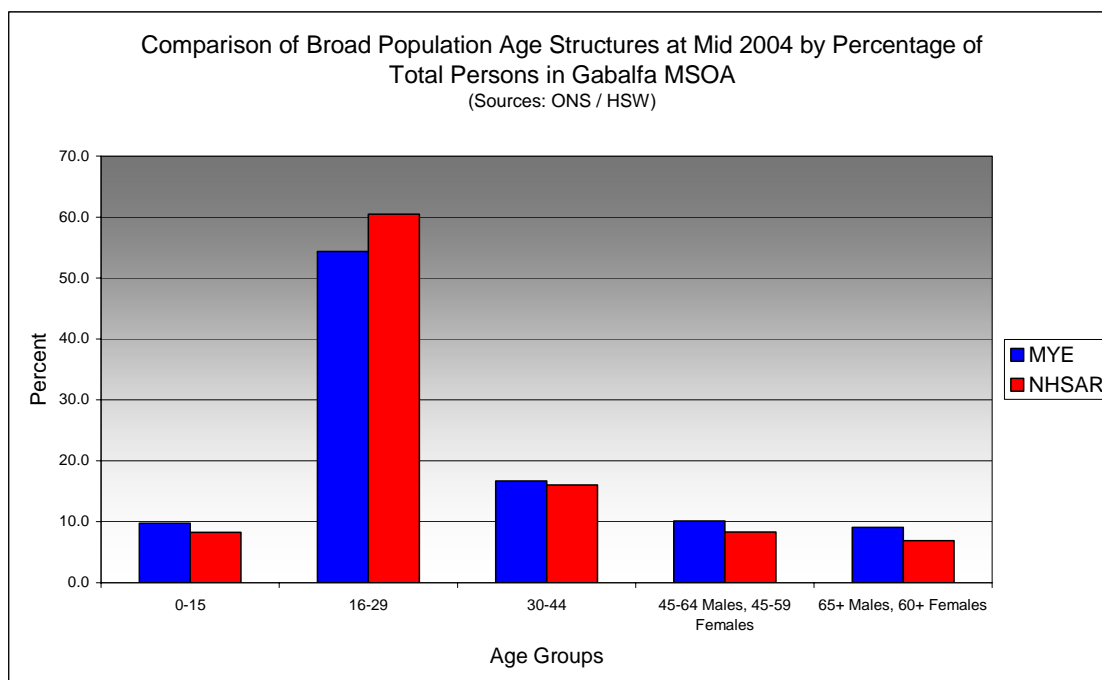
- In Gabalfa total NHSAR population at Mid 2004 was 13.4% (approximately 1,250 persons) higher than the experimental Mid Year Estimate.
- Total male NHSAR population was 22.4% higher, while total female population was 4.8% higher.
- NHSAR population counts showed the greatest variance from the Experimental MYEs in the following age groups: 25 to 29 years 66.9% higher & those aged 20 to 24 years 22.6% higher.
- Gabalfa is ranked 44th (MYE) and 45th (NHSAR) out of 47 MSOAs in Cardiff for it's total dependency ratio.
- Within the Cardiff North Locality Gabalfa is ranked 12th (MYE & NHSAR) out of 12 MSOAs for it's total dependency ratio.
- Gabalfa is ranked 41st (MYE) and 44th (NHSAR) out of 47 MSOAs in Cardiff for the total number of younger dependents aged 0 to 14.
- Within it's locality Gabalfa is ranked 12th (MYE & NHSAR) out of 12 MSOAs for the total number of younger dependents aged 0 to 14.
- Gabalfa is ranked 35th (MYE) and 40th (NHSAR) out of 47 MSOAs for the total number of older dependents aged 65 plus.
- Within it's locality Gabalfa is ranked 10th (MYE & NHSAR) out of 12 MSOAs for the total number of older dependents aged 65 plus.
- The majority of dependent age groups (0 to 14 + 65 and over) are younger dependents aged 0 to 14, representing 53.4% (MYE) and 55.4% (NHSAR) of total dependents.

Dependency Ratios at Mid 2004 in Gabalfa MSOA (Sources: Derived from Data Supplied by ONS & HSW)		
	MYE	NHSAR
Dependents Aged 0 - 14	900	800
Dependents Aged 65 Plus	800	700
Total Dependents	1,600	1,500
Persons Aged 15 to 64	7,800	9,100
Total Persons	9,400	10,600
Gabalfa Dependency Ratio	0.21	0.16
Locality Dependency Ratio	0.52	0.48
Cardiff Dependency Ratio	0.47	0.43
Wales Dependency Ratio	0.57	0.52

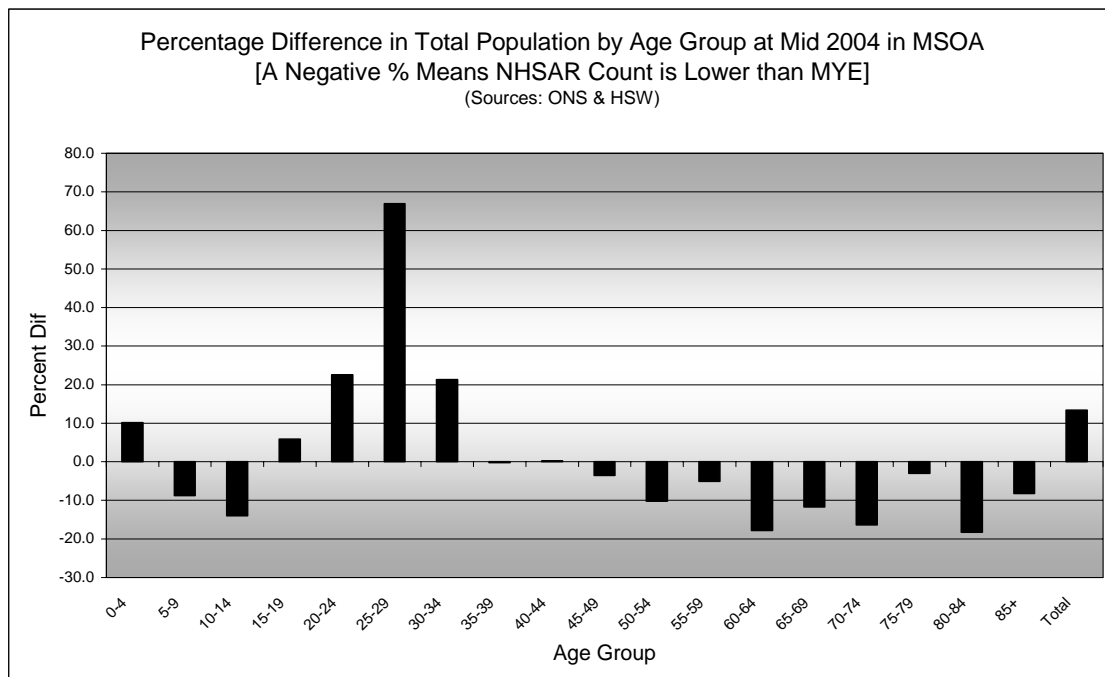
Broad Age Group Comparisons

Comparison of Population Sources by Broad Age Group for Mid 2004 in Gabalfa MSOA						
	0-15	16-29	30-44	45-64 Males, 45-59 Females	65+ Males, 60+ Females	All Ages
MYE	900	5,100	1,600	900	800	9,400
NHSAR	900	6,400	1,700	900	700	10,600
Difference #	-37	1,335	138	-64	-116	1,256
Difference %	-4.1	26.3	8.8	-6.8	-13.7	13.4

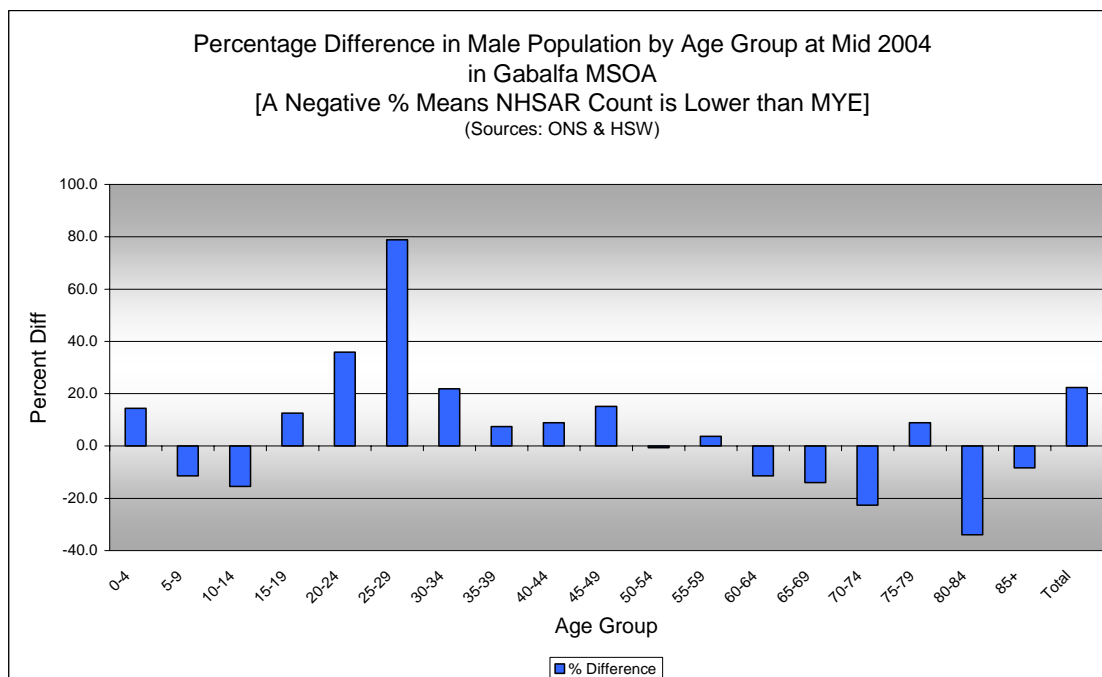
Comparison of Broad Population Age Structures for Mid 2004 by Percentage of Total Population in Gabalfa MSOA						
	0-15	16-29	30-44	45-64 Males, 45-59 Females	65+ Males, 60+ Females	All Ages
MYE	9.8	54.4	16.7	10.1	9.1	100.0
NHSAR	8.2	60.5	16.0	8.3	6.9	100.0



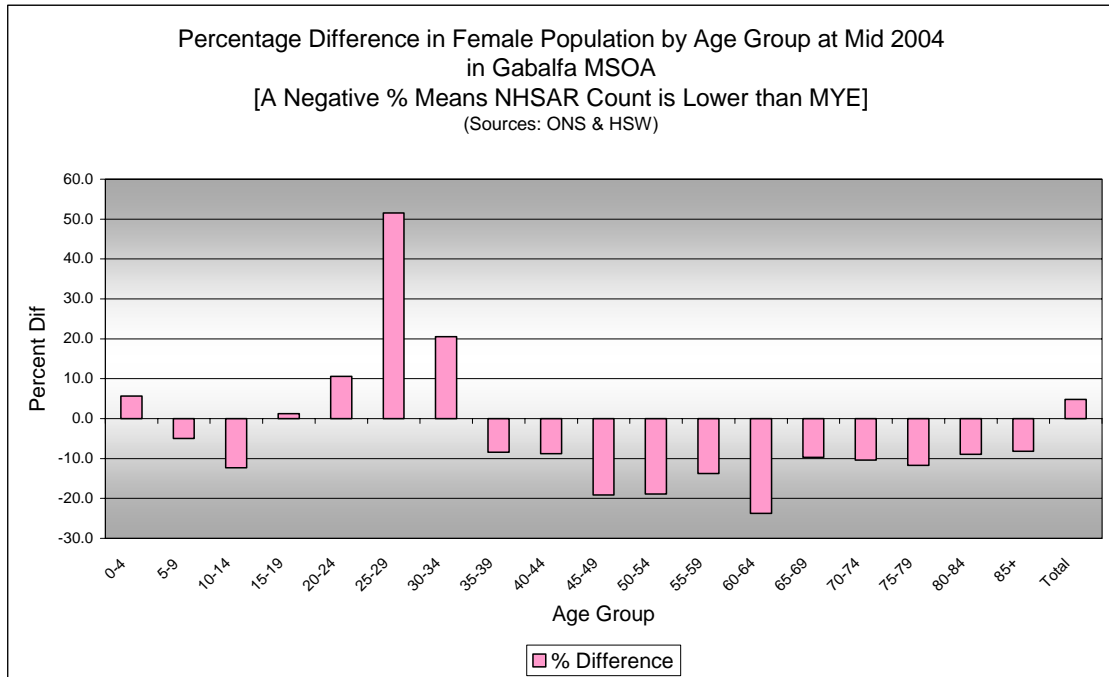
Quinary Age Group Comparisons – 2004 NHSAR Minus MYE



Comparison of Total Population by Age Group at Mid 2004 in Gabalfa MSOA [Difference = NHSAR Minus MYE] (Sources: ONS & HSW)				
Age	Persons (MYE)	Persons (NHSAR)	# Difference	Difference %
0-4	300	300	26	10.2
5-9	300	300	-26	-8.8
10-14	300	300	-43	-14.0
15-19	1,500	1,600	90	5.9
20-24	2,600	3,200	595	22.6
25-29	1,000	1,600	656	66.9
30-34	600	800	138	21.3
35-39	500	500	-1	-0.2
40-44	400	400	1	0.2
45-49	300	300	-12	-3.6
50-54	300	300	-31	-10.2
55-59	200	200	-11	-5.0
60-64	200	200	-33	-17.8
65-69	200	200	-23	-11.7
70-74	200	200	-34	-16.3
75-79	100	100	-4	-3.0
80-84	100	100	-26	-18.3
85+	100	100	-6	-8.2
Total	9,400	10,600	1,256	13.4

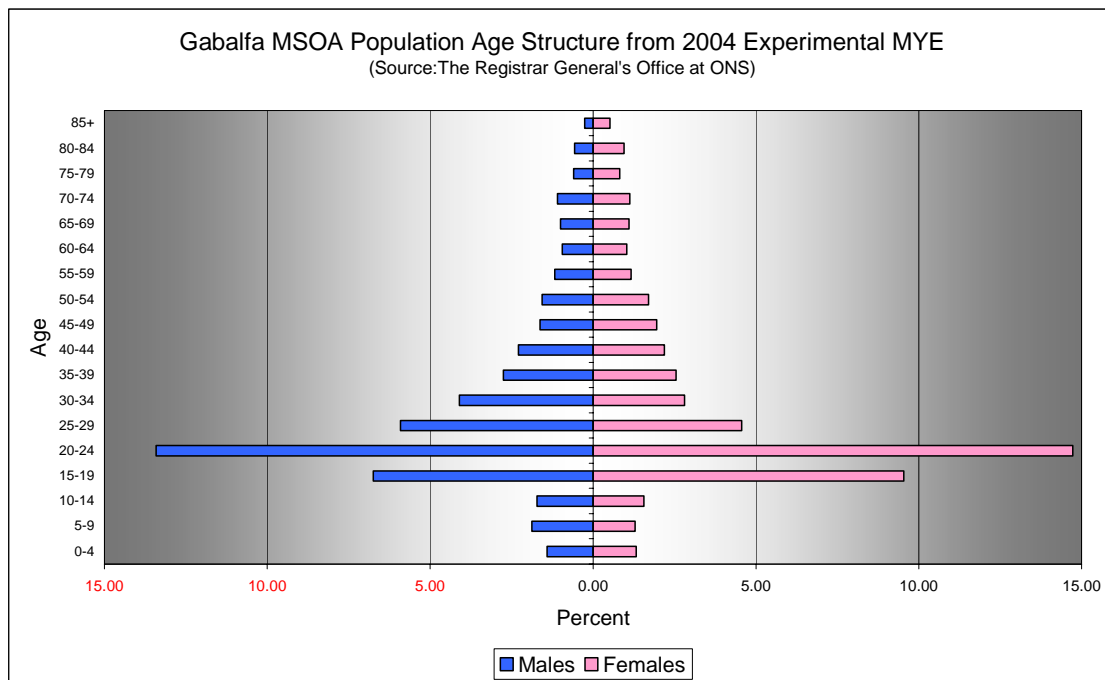


Comparison of Male Population by Age Group at Mid 2004 in Gabalfa MSOA [Difference = NHSAR Minus MYE] (Sources: ONS & HSW)				
Age	Males (MYE)	Males (NHSAR)	# Difference	% Difference
0-4	100	200	19	14.4
5-9	200	200	-20	-11.4
10-14	200	100	-25	-15.5
15-19	600	700	79	12.5
20-24	1,300	1,700	450	35.9
25-29	600	1,000	436	78.8
30-34	400	500	84	21.9
35-39	300	300	19	7.4
40-44	200	200	19	8.9
45-49	200	200	23	15.1
50-54	100	100	-1	-0.7
55-59	100	100	4	3.6
60-64	100	100	-10	-11.4
65-69	100	100	-13	-14.0
70-74	100	100	-23	-22.5
75-79	100	100	5	8.9
80-84	100	50	-18	-34.0
85+	50	50	-2	-8.3
Total	4,600	5,600	1,026	22.4



Comparison of Female Population by Age Group at Mid 2004 in Gabalfa MSOA [Difference = NHSAR Minus MYE] (Sources: ONS & HSW)				
Age	Females (MYE)	Females (NHSAR)	# Difference	% Difference
0-4	100	100	7	5.6
5-9	100	100	-6	-5.0
10-14	100	100	-18	-12.3
15-19	900	900	11	1.2
20-24	1,400	1,500	145	10.5
25-29	400	600	220	51.5
30-34	300	300	54	20.5
35-39	200	200	-20	-8.4
40-44	200	200	-18	-8.8
45-49	200	100	-35	-19.1
50-54	200	100	-30	-18.9
55-59	100	100	-15	-13.8
60-64	100	100	-23	-23.7
65-69	100	100	-10	-9.7
70-74	100	100	-11	-10.4
75-79	100	100	-9	-11.7
80-84	100	100	-8	-9.0
85+	50	50	-4	-8.2
Total	4,800	5,000	230	4.8

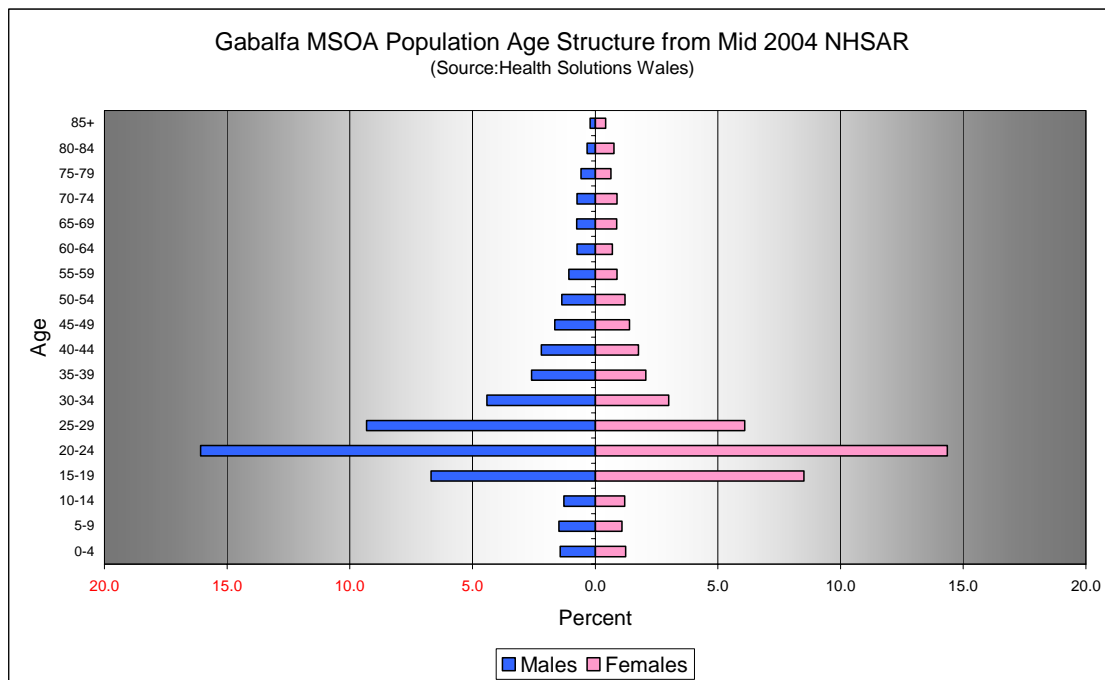
Quinary Population Age Structure - 2004 MYE



Gabalfa MSOA Population Age Structure 2004 MYE (Source: ONS)			
Age	Males	Females	Persons
0-4	100	100	300
5-9	200	100	300
10-14	200	100	300
15-19	600	900	1,500
20-24	1,300	1,400	2,600
25-29	600	400	1,000
30-34	400	300	600
35-39	300	200	500
40-44	200	200	400
45-49	200	200	300
50-54	100	200	300
55-59	100	100	200
60-64	100	100	200
65-69	100	100	200
70-74	100	100	200
75-79	100	100	100
80-84	100	100	100
85+	50	50	100
Total	4,600	4,800	9,400

Gabalfa MSOA Population Age Structure 2004 MYE - Percentage of total Persons (Source: ONS)			
Age	Males	Females	Persons
0-4	1.4	1.3	2.7
5-9	1.9	1.3	3.2
10-14	1.7	1.6	3.3
15-19	6.7	9.5	16.3
20-24	13.4	14.7	28.1
25-29	5.9	4.6	10.5
30-34	4.1	2.8	6.9
35-39	2.7	2.5	5.3
40-44	2.3	2.2	4.5
45-49	1.6	2.0	3.6
50-54	1.6	1.7	3.3
55-59	1.2	1.2	2.3
60-64	0.9	1.0	2.0
65-69	1.0	1.1	2.1
70-74	1.1	1.1	2.2
75-79	0.6	0.8	1.4
80-84	0.6	1.0	1.5
85+	0.3	0.5	0.8
Total	49.0	51.0	100.0

Quinary Population Age Structure Mid 2004 NHSAR



Gabalfa MSOA Population Age Structure – NHSAR Mid 2004 (Source: HSW)			
Age	Males	Females	Persons
0-4	200	100	300
5-9	200	100	300
10-14	100	100	300
15-19	700	900	1,600
20-24	1,700	1,500	3,200
25-29	1,000	600	1,600
30-34	500	300	800
35-39	300	200	500
40-44	200	200	400
45-49	200	100	300
50-54	100	100	300
55-59	100	100	200
60-64	100	100	200
65-69	100	100	200
70-74	100	100	200
75-79	100	100	100
80-84	50	100	100
85+	50	50	100
Total	5,600	5,000	10,600

Gabalfa MSOA Population Age Structure % of Total Persons - NHSAR Mid 2004 (Source: HSW)			
Age	Males	Females	Persons
0-4	1.4	1.2	2.7
5-9	1.5	1.1	2.6
10-14	1.3	1.2	2.5
15-19	6.7	8.5	15.2
20-24	16.1	14.3	30.4
25-29	9.3	6.1	15.4
30-34	4.4	3.0	7.4
35-39	2.6	2.1	4.7
40-44	2.2	1.8	4.0
45-49	1.6	1.4	3.0
50-54	1.4	1.2	2.6
55-59	1.1	0.9	2.0
60-64	0.7	0.7	1.4
65-69	0.8	0.9	1.6
70-74	0.7	0.9	1.6
75-79	0.6	0.6	1.2
80-84	0.3	0.8	1.1
85+	0.2	0.4	0.6
Total	52.9	47.1	100.0