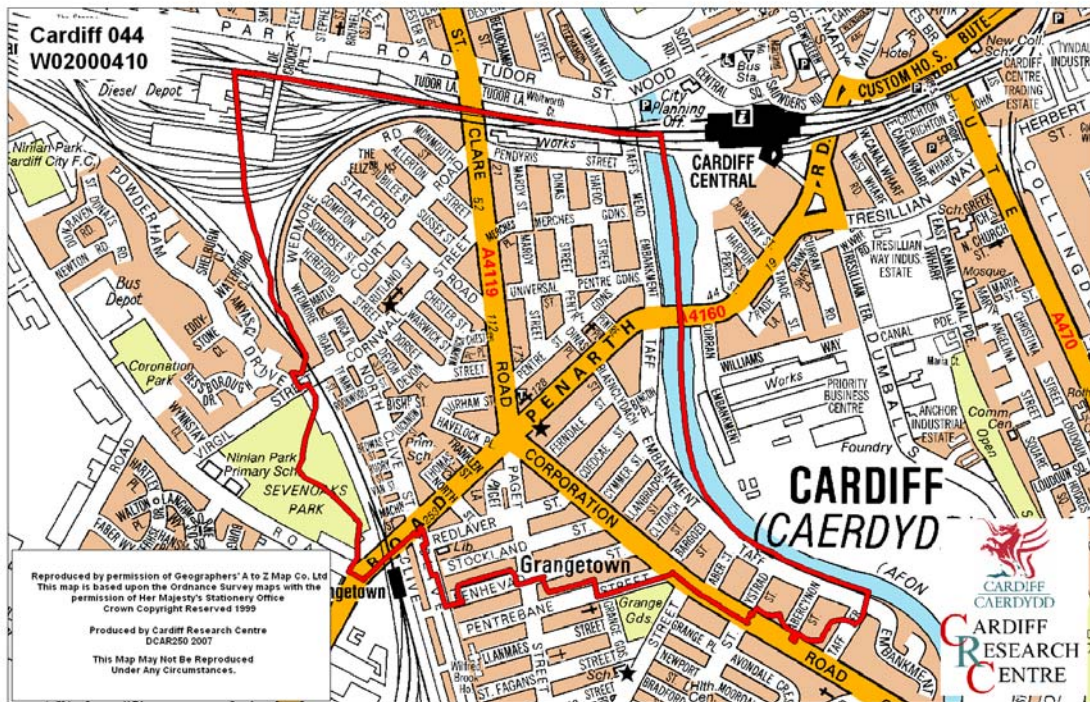


Grangetown Middle Super Output Area

A comparison of Population Age Structure's for Mid 2004 from the National Statistics experimental Mid Year Estimate and the National Health Service Administrative Records (NHSAR)

Figure: Grangetown MSA (Cardiff South East Locality)



Disclosure Control: Due to a requirement to observe the Registrar General's disclosure control protocols for experimental and official Mid Year Estimates of population it has been necessary to round population figures provided in this profile to the nearest 100 persons. Due to the danger of disclosure by difference the NHSAR population figures in this brief have also been rounded to the nearest 100 persons. For both datasets, when the population estimate was less than 50 persons, the value of 50 has been used. However, it is important to note that all graphics and the percentages presented in this profile have been produced using raw un-rounded estimates. The difference between NHSAR and MYE population estimates are also presented here in their un-rounded raw format.

Summary Key Statistics

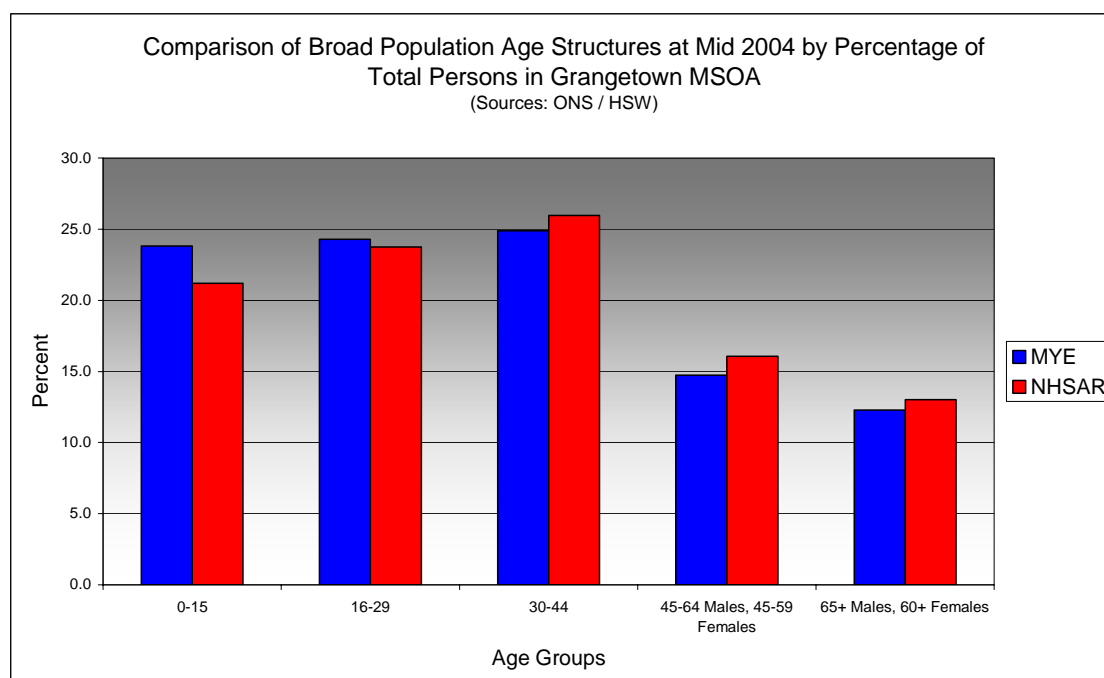
- In Grangetown total NHSAR population at Mid 2004 was 13.9% (approximately 1,050 persons) higher than the experimental Mid Year Estimate.
- Total male NHSAR population was 21.4% higher, while total female population was 6.5% higher.
- NHSAR population counts showed the greatest variance from the Experimental MYEs in the following age groups: 70 to 74 years 31.3% higher & those aged 25 to 29 years 25.2% higher.
- Grangetown is ranked 29th (MYE) and 27th (NHSAR) out of 47 MSOAs in Cardiff for it's total dependency ratio.
- Within the Cardiff South East Locality Grangetown is ranked 8th (MYE) and 9th (NHSAR) out of 11 MSOAs for it's total dependency ratio.
- Grangetown is ranked 3rd (MYE) and 4th (NHSAR) out of 47 MSOAs in Cardiff for the total number of younger dependents aged 0 to 14.
- Within it's locality Grangetown is ranked 3rd (MYE & NHSAR) out of 11 MSOAs for the total number of younger dependents aged 0 to 14.
- Grangetown is ranked 29th (MYE) and 22nd (NHSAR) out of 47 MSOAs for the total number of older dependents aged 65 plus.
- Within it's locality Grangetown is ranked 5th (MYE) and 4th (NHSAR) out of 11 MSOAs for the total number of older dependents aged 65 plus.
- The majority of dependent age groups (0 to 14 + 65 and over) are younger dependents aged 0 to 14, representing 67.8% (MYE) and 63.6% (NHSAR) of total dependents.

Dependency Ratios at Mid 2004 in Grangetown MSOA (Sources: Derived from Data Supplied by ONS & HSW)		
	MYE	NHSAR
Dependents Aged 0 - 14	1,700	1,700
Dependents Aged 65 Plus	800	1,000
Total Dependents	2,500	2,700
Persons Aged 15 to 64	5,000	5,800
Total Persons	7,500	8,500
Grangetown Dependency Ratio	0.49	0.46
Locality Dependency Ratio	0.52	0.51
Cardiff Dependency Ratio	0.47	0.43
Wales Dependency Ratio	0.57	0.52

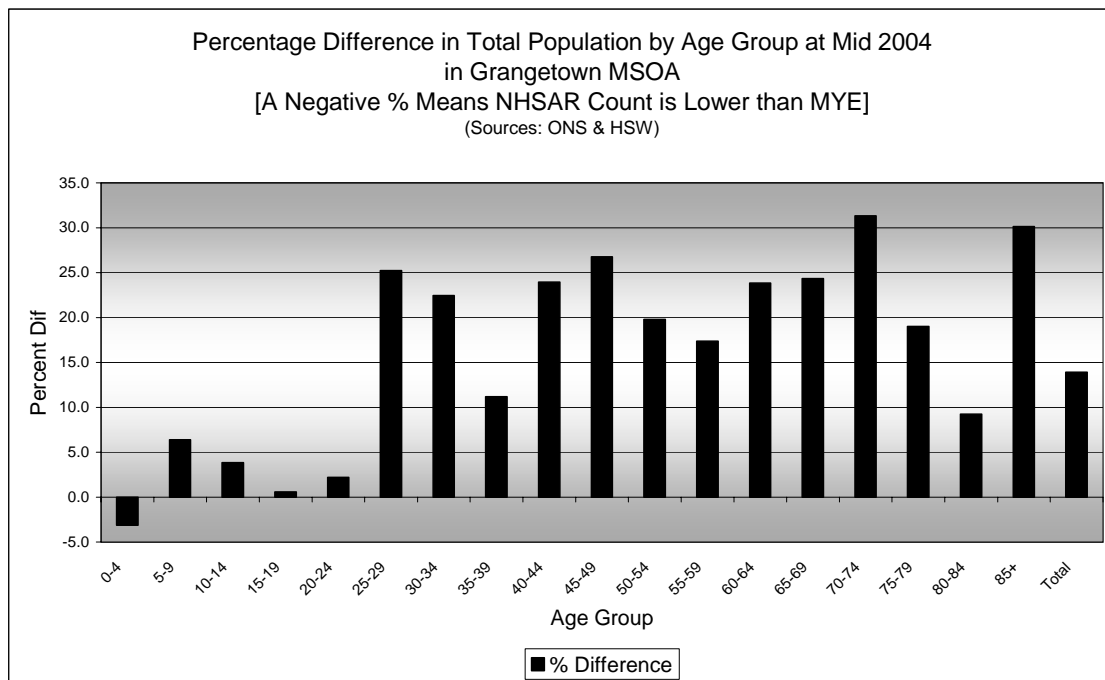
Broad Age Group Comparisons

Comparison of Population Sources by Broad Age Group for Mid 2004 in Grangetown MSOA						
	0-15	16-29	30-44	45-64 Males, 45-59 Females	65+ Males, 60+ Females	All Ages
MYE	1,800	1,800	1,900	1,100	900	7,500
NHSAR	1,800	2,000	2,200	1,400	1,100	8,500
Difference #	25	208	351	267	190	1,041
Difference %	1.4	11.5	18.9	24.2	20.7	13.9

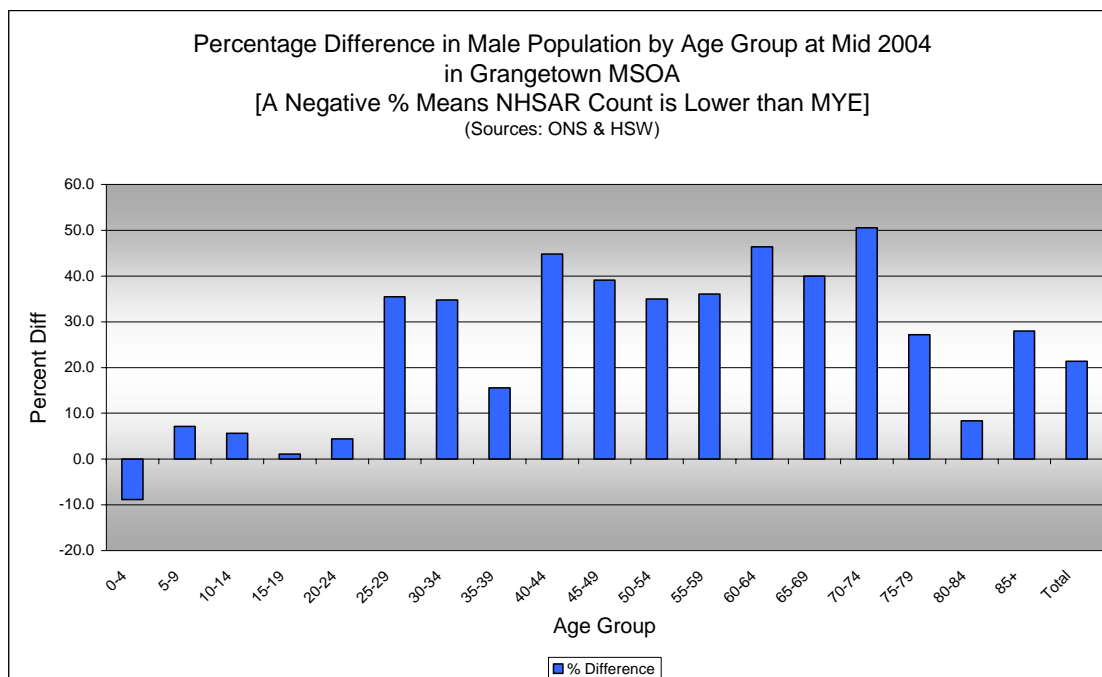
Comparison of Broad Population Age Structures for Mid 2004 by Percentage of Total Population in Grangetown MSOA						
	0-15	16-29	30-44	45-64 Males, 45-59 Females	65+ Males, 60+ Females	All Ages
MYE	23.8	24.3	24.9	14.7	12.3	100.0
NHSAR	21.2	23.8	26.0	16.1	13.0	100.0



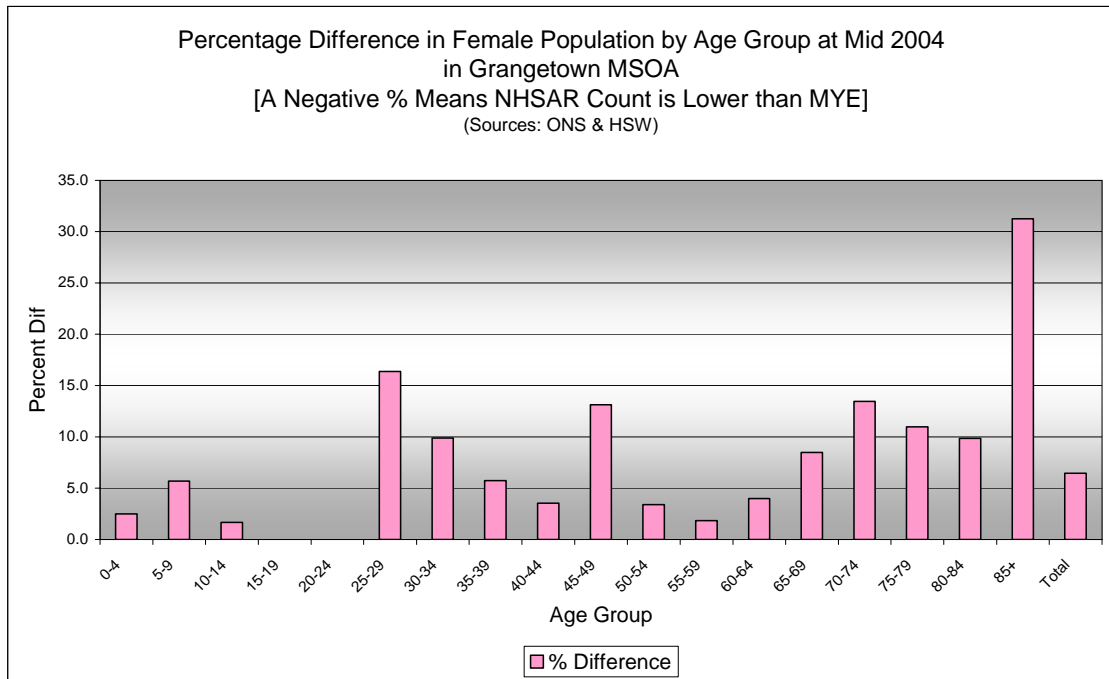
Quinary Age Group Comparisons – 2004 NHSAR Minus MYE



Age	Persons (MYE)	Persons (NHSAR)	# Difference	% Difference
0-4	600	600	-20	-3.1
5-9	500	500	33	6.4
10-14	500	500	20	3.8
15-19	500	500	3	0.6
20-24	700	700	15	2.2
25-29	700	900	182	25.2
30-34	700	900	156	22.4
35-39	700	700	74	11.2
40-44	500	600	121	24.0
45-49	400	500	103	26.8
50-54	300	400	61	19.8
55-59	300	400	52	17.4
60-64	200	300	56	23.8
65-69	200	300	58	24.4
70-74	200	300	63	31.3
75-79	200	200	31	19.0
80-84	100	100	11	9.2
85+	100	100	22	30.1
Total	7,500	8,500	1,041	13.9

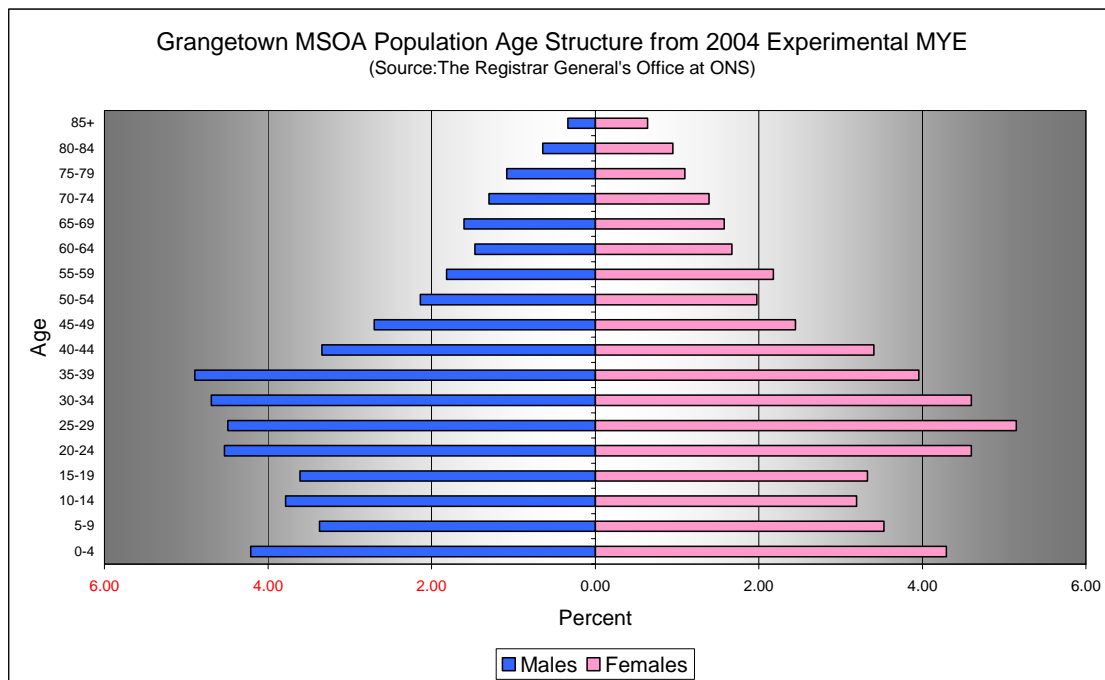


Comparison of Male Population by Age Group at Mid 2004 in Grangetown MSOA [Difference = NHSAR Minus MYE] (Sources: ONS & HSW)				
Age	Males (MYE)	Males (NHSAR)	# Difference	% Difference
0-4	300	300	-28	-8.9
5-9	300	300	18	7.1
10-14	300	300	16	5.7
15-19	300	300	3	1.1
20-24	300	400	15	4.4
25-29	300	500	119	35.4
30-34	400	500	122	34.8
35-39	400	400	57	15.6
40-44	300	400	112	44.8
45-49	200	300	79	39.1
50-54	200	200	56	35.0
55-59	100	200	49	36.0
60-64	100	200	51	46.4
65-69	100	200	48	40.0
70-74	100	100	49	50.5
75-79	100	100	22	27.2
80-84	50	100	4	8.3
85+	50	50	7	28.0
Total	3,700	4,500	799	21.4



Comparison of Female Population by Age Group at Mid 2004 in Grangetown MSOA [Difference = NHSAR Minus MYE] (Sources: ONS & HSW)				
Age	Females (MYE)	Females (NHSAR)	# Difference	% Difference
0-4	300	300	8	2.5
5-9	300	300	15	5.7
10-14	200	200	4	1.7
15-19	200	200	0	0.0
20-24	300	300	0	0.0
25-29	400	400	63	16.4
30-34	300	400	34	9.9
35-39	300	300	17	5.7
40-44	300	300	9	3.5
45-49	200	200	24	13.1
50-54	100	200	5	3.4
55-59	200	200	3	1.8
60-64	100	100	5	4.0
65-69	100	100	10	8.5
70-74	100	100	14	13.5
75-79	100	100	9	11.0
80-84	100	100	7	9.9
85+	50	100	15	31.3
Total	3,700	4,000	242	6.5

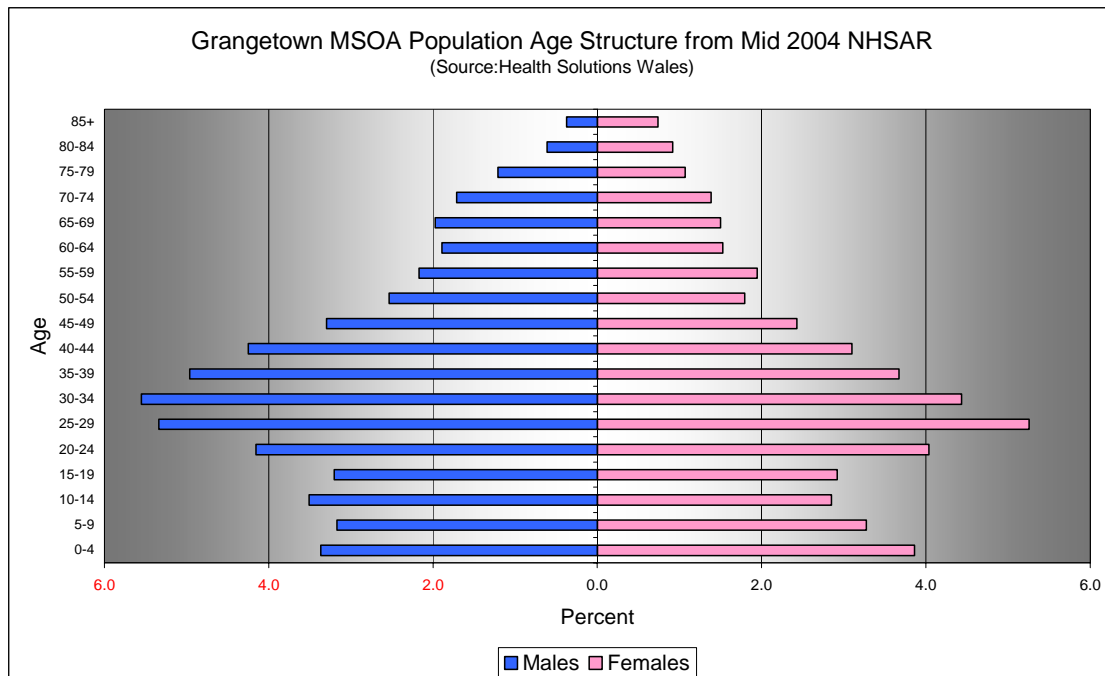
Quinary Population Age Structure - 2004 MYE



Grangetown MSOA Population Age Structure 2004 MYE (Source: ONS)			
Age	Males	Females	Persons
0-4	300	300	600
5-9	300	300	500
10-14	300	200	500
15-19	300	200	500
20-24	300	300	700
25-29	300	400	700
30-34	400	300	700
35-39	400	300	700
40-44	300	300	500
45-49	200	200	400
50-54	200	100	300
55-59	100	200	300
60-64	100	100	200
65-69	100	100	200
70-74	100	100	200
75-79	100	100	200
80-84	50	100	100
85+	50	50	100
Total	3,700	3,700	7,500

Grangetown MSOA Population Age Structure 2004 MYE - Percentage of total Persons (Source: ONS)			
Age	Males	Females	Persons
0-4	4.2	4.3	8.5
5-9	3.4	3.5	6.9
10-14	3.8	3.2	7.0
15-19	3.6	3.3	6.9
20-24	4.5	4.6	9.1
25-29	4.5	5.1	9.6
30-34	4.7	4.6	9.3
35-39	4.9	4.0	8.9
40-44	3.3	3.4	6.8
45-49	2.7	2.4	5.1
50-54	2.1	2.0	4.1
55-59	1.8	2.2	4.0
60-64	1.5	1.7	3.1
65-69	1.6	1.6	3.2
70-74	1.3	1.4	2.7
75-79	1.1	1.1	2.2
80-84	0.6	0.9	1.6
85+	0.3	0.6	1.0
Total	50.0	50.0	100.0

Quinary Population Age Structure Mid 2004 NHSAR



Grangetown MSOA Population Age Structure - NHSAR Mid 2004 (Source: HSW)			
Age	Males	Females	Persons
0-4	300	300	600
5-9	300	300	500
10-14	300	200	500
15-19	300	200	500
20-24	400	300	700
25-29	500	400	900
30-34	500	400	900
35-39	400	300	700
40-44	400	300	600
45-49	300	200	500
50-54	200	200	400
55-59	200	200	400
60-64	200	100	300
65-69	200	100	300
70-74	100	100	300
75-79	100	100	200
80-84	100	100	100
85+	50	100	100
Total	4,500	4,000	8,500

Grangetown MSOA Population Age Structure % of Total Persons - NHSAR Mid 2004 (Source: HSW)			
Age	Males	Females	Persons
0-4	3.4	3.9	7.2
5-9	3.2	3.3	6.4
10-14	3.5	2.9	6.4
15-19	3.2	2.9	6.1
20-24	4.2	4.0	8.2
25-29	5.3	5.3	10.6
30-34	5.6	4.4	10.0
35-39	5.0	3.7	8.6
40-44	4.2	3.1	7.3
45-49	3.3	2.4	5.7
50-54	2.5	1.8	4.3
55-59	2.2	1.9	4.1
60-64	1.9	1.5	3.4
65-69	2.0	1.5	3.5
70-74	1.7	1.4	3.1
75-79	1.2	1.1	2.3
80-84	0.6	0.9	1.5
85+	0.4	0.7	1.1
Total	53.3	46.7	100.0