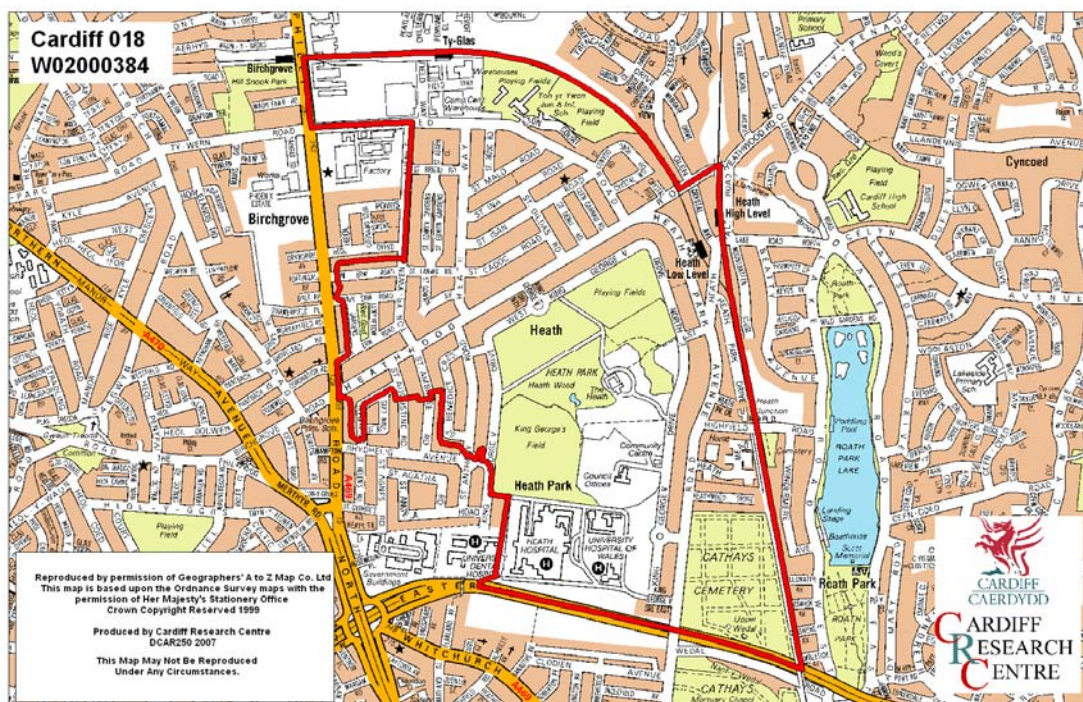


# Heath Park Middle Super Output Area

A comparison of Population Age Structure's for Mid 2004 from the National Statistics experimental Mid Year Estimate and the National Health Service Administrative Records (NHSAR)

Figure: Heath Park MSAO (Cardiff North Locality)



**Disclosure Control:** Due to a requirement to observe the Registrar General's disclosure control protocols for experimental and official Mid Year Estimates of population it has been necessary to round population figures provided in this profile to the nearest 100 persons. Due to the danger of disclosure by difference the NHSAR population figures in this brief have also been rounded to the nearest 100 persons. For both datasets, when the population estimate was less than 50 persons, the value of 50 has been used. However, it is important to note that all graphics and the percentages presented in this profile have been produced using raw un-rounded estimates. The difference between NHSAR and MYE population estimates are also presented here in their un-rounded raw format.

## Summary Key Statistics

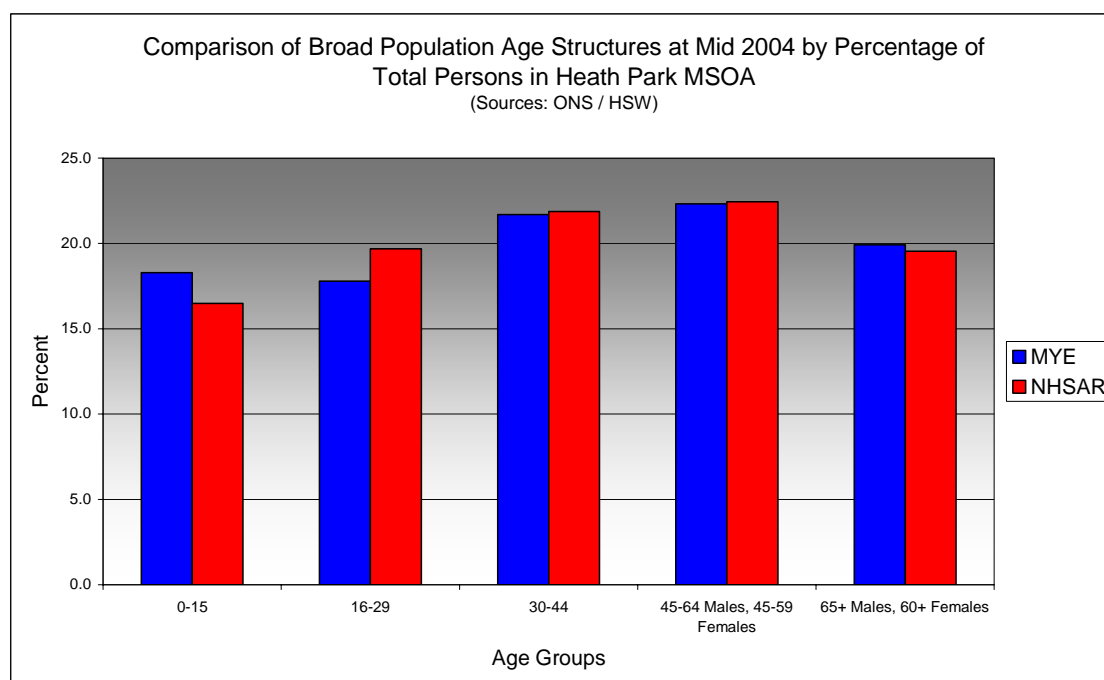
- In Heath Park total NHSAR population at Mid 2004 was 7.5% (approximately 450 persons) higher than the experimental Mid Year Estimate.
- Total male NHSAR population was 9.1% higher, while total female population was 6.1% higher.
- NHSAR population counts showed the greatest variance from the Experimental MYEs in the following age groups: 25 to 29 years 50.7% higher & those aged 20 to 24 years 17.5% higher.
- Heath Park is ranked 23<sup>rd</sup> (MYE) and 25<sup>th</sup> (NHSAR) out of 47 MSOAs in Cardiff for it's total dependency ratio.
- Within the Cardiff North Locality Heath Park is ranked 8<sup>th</sup> (MYE) and 9<sup>th</sup> (NHSAR) out of 12 MSOAs for it's total dependency ratio.
- Heath Park is ranked 37<sup>th</sup> (MYE) and 38<sup>th</sup> (NHSAR) out of 47 MSOAs in Cardiff for the total number of younger dependents aged 0 to 14.
- Within it's locality Heath Park is ranked 9<sup>th</sup> (MYE) and 10<sup>th</sup> (NHSAR) out of 12 MSOAs for the total number of younger dependents aged 0 to 14.
- Heath Park is ranked 17<sup>th</sup> (MYE) and 16<sup>th</sup> (NHSAR) out of 47 MSOAs for the total number of older dependents aged 65 plus.
- Within it's locality Heath Park is ranked 8<sup>th</sup> (MYE & NHSAR) out of 11 MSOAs for the total number of older dependents aged 65 plus.
- The majority of dependent age groups (0 to 14 + 65 and over) are older dependents aged 65 and over, representing 51.3% (MYE) and 53.2% (NHSAR) of total dependents.

<b>Dependency Ratios at Mid 2004 in Heath Park MSOA</b> (Sources: Derived from Data Supplied by ONS & HSW)		
	<b>MYE</b>	<b>NHSAR</b>
<b>Dependents Aged 0 - 14</b>	1,000	1,000
<b>Dependents Aged 65 Plus</b>	1,000	1,100
<b>Total Dependents</b>	2,000	2,100
<b>Persons Aged 15 to 64</b>	3,900	4,300
<b>Total Persons</b>	5,900	6,300
<b>Heath Park Dependency Ratio</b>	0.53	0.49
<b>Locality Dependency Ratio</b>	0.52	0.48
<b>Cardiff Dependency Ratio</b>	0.47	0.43
<b>Wales Dependency Ratio</b>	0.57	0.52

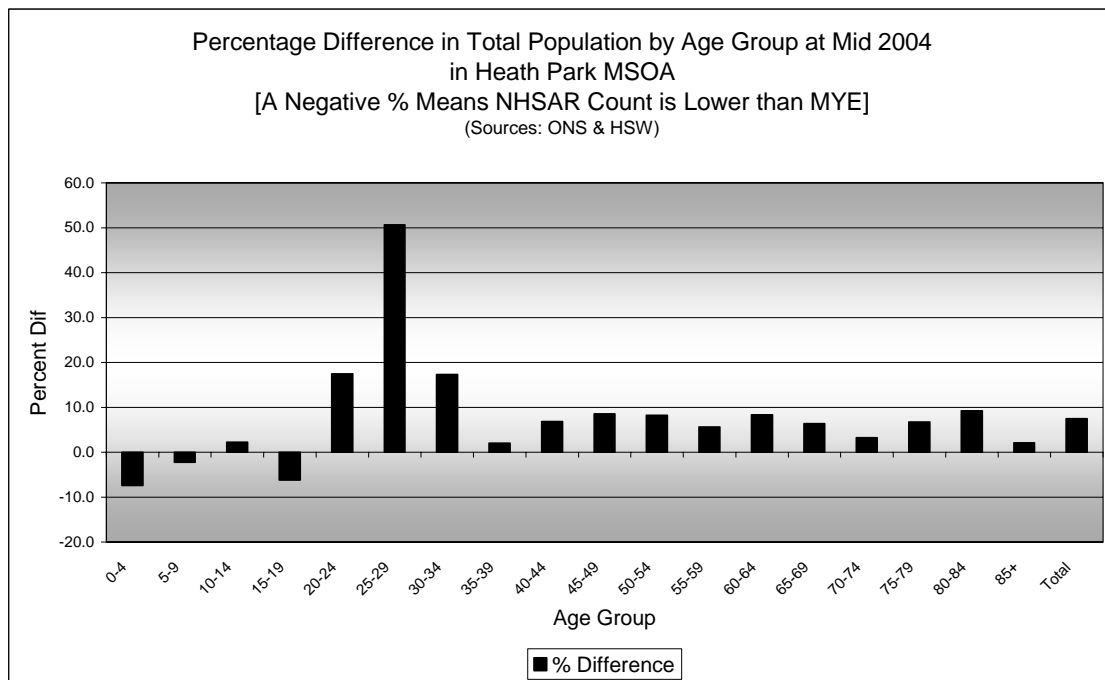
## Broad Age Group Comparisons

Comparison of Population Sources by Broad Age Group for Mid 2004 in Heath Park MSOA						
	0-15	16-29	30-44	45-64 Males, 45-59 Females	65+ Males, 60+ Females	All Ages
<b>MYE</b>	1,100	1,000	1,300	1,300	1,200	5,900
<b>NHSAR</b>	1,100	1,200	1,400	1,400	1,200	6,300
<b>Difference #</b>	-34	198	106	106	64	440
<b>Difference %</b>	-3.2	18.9	8.3	8.1	5.5	7.5

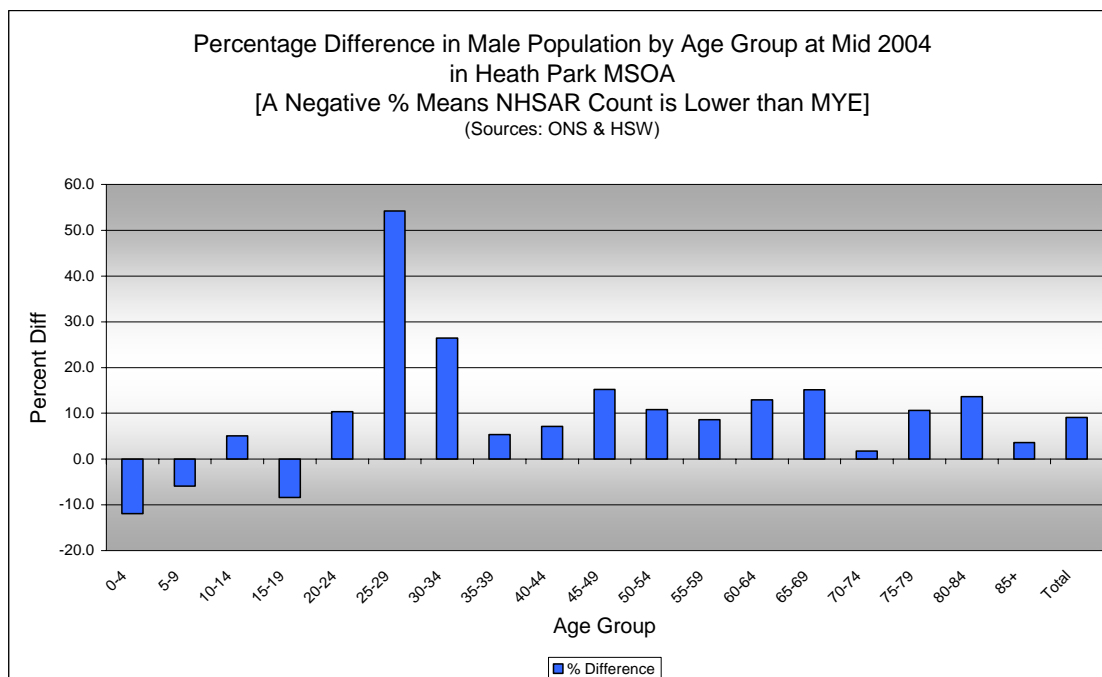
Comparison of Broad Population Age Structures for Mid 2004 by Percentage of Total Population in Heath Park MSOA						
	0-15	16-29	30-44	45-64 Males, 45-59 Females	65+ Males, 60+ Females	All Ages
<b>MYE</b>	18.3	17.8	21.7	22.3	19.9	100.0
<b>NHSAR</b>	16.5	19.7	21.9	22.4	19.5	100.0



## Quinary Age Group Comparisons – 2004 NHSAR Minus MYE

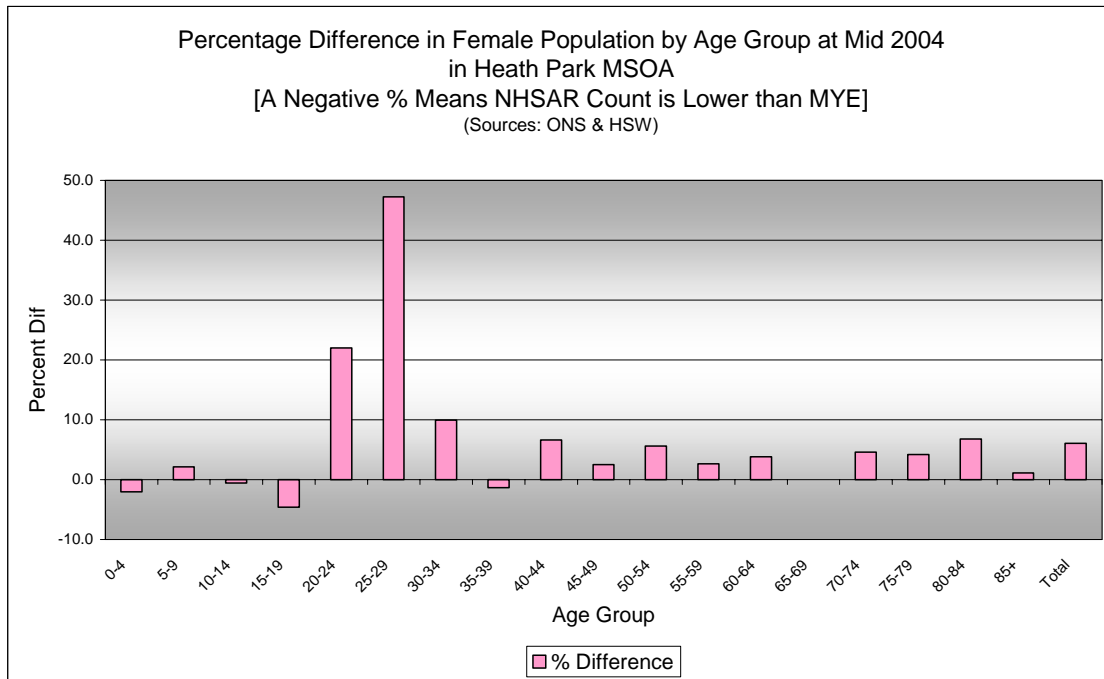


Comparison of Total Population by Age Group at Mid 2004 in Heath Park MSOA [Difference = NHSAR Minus MYE] (Sources: ONS & HSW)				
Age	Persons (MYE)	Persons (NHSAR)	# Difference	% Difference
0-4	300	300	-24	-7.4
5-9	300	300	-7	-2.3
10-14	400	400	8	2.2
15-19	500	400	-28	-6.2
20-24	400	500	69	17.5
25-29	300	400	146	50.7
30-34	400	400	66	17.3
35-39	400	500	9	2.0
40-44	500	500	31	6.9
45-49	400	400	33	8.6
50-54	400	500	35	8.2
55-59	400	400	21	5.6
60-64	300	300	22	8.4
65-69	200	200	15	6.4
70-74	200	300	8	3.3
75-79	200	300	16	6.7
80-84	200	200	17	9.2
85+	100	100	3	2.1
<b>Total</b>	<b>5,900</b>	<b>6,300</b>	<b>440</b>	<b>7.5</b>



**Comparison of Male Population by Age Group at Mid 2004 in Heath Park MSOA**  
[Difference = NHSAR Minus MYE] (Sources: ONS & HSW)

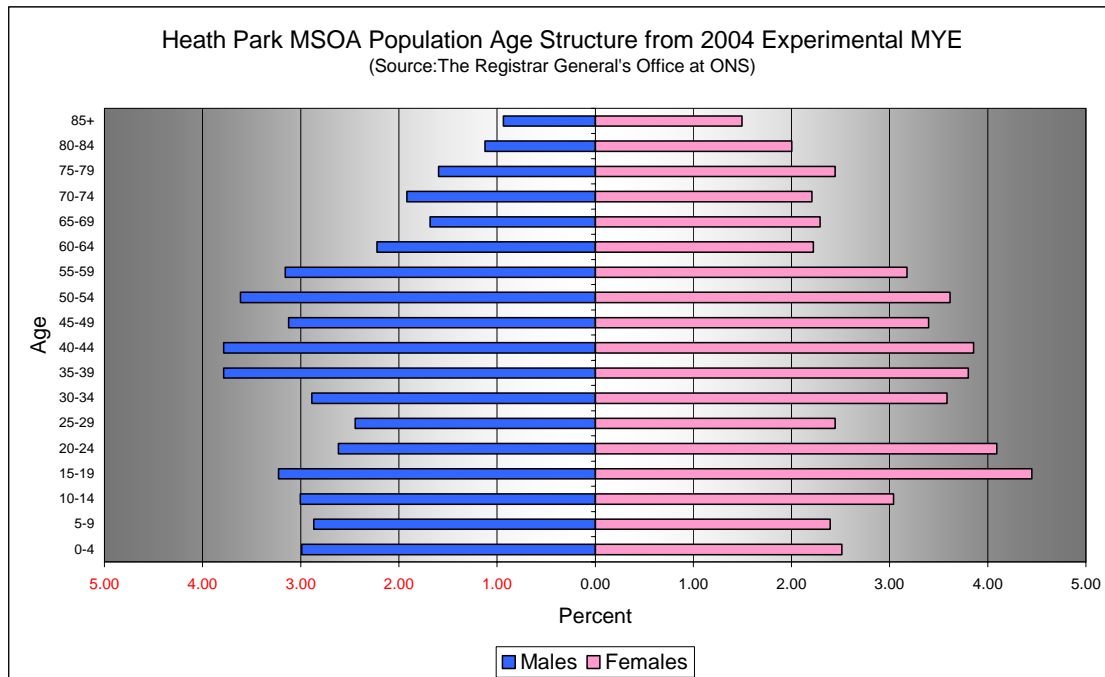
Age	Males (MYE)	Males (NHSAR)	# Difference	% Difference
0-4	200	200	-21	-11.9
5-9	200	200	-10	-5.9
10-14	200	200	9	5.1
15-19	200	200	-16	-8.4
20-24	200	200	16	10.4
25-29	100	200	78	54.2
30-34	200	200	45	26.5
35-39	200	200	12	5.4
40-44	200	200	16	7.2
45-49	200	200	28	15.2
50-54	200	200	23	10.8
55-59	200	200	16	8.6
60-64	100	100	17	13.0
65-69	100	100	15	15.2
70-74	100	100	2	1.8
75-79	100	100	10	10.6
80-84	100	100	9	13.6
85+	100	100	2	3.6
<b>Total</b>	<b>2,800</b>	<b>3,000</b>	<b>251</b>	<b>9.1</b>



**Comparison of Female Population by Age Group at Mid 2004 in Heath Park MSOA**  
[Difference = NHSAR Minus MYE] (Sources: ONS & HSW)

Age	Females (MYE)	Females (NHSAR)	# Difference	% Difference
0-4	100	100	-3	-2.0
5-9	100	100	3	2.1
10-14	200	200	-1	-0.6
15-19	300	300	-12	-4.6
20-24	200	300	53	22.0
25-29	100	200	68	47.2
30-34	200	200	21	10.0
35-39	200	200	-3	-1.3
40-44	200	200	15	6.6
45-49	200	200	5	2.5
50-54	200	200	12	5.6
55-59	200	200	5	2.7
60-64	100	100	5	3.8
65-69	100	100	0	0.0
70-74	100	100	6	4.6
75-79	100	200	6	4.2
80-84	100	100	8	6.8
85+	100	100	1	1.1
<b>Total</b>	<b>3,100</b>	<b>3,300</b>	<b>189</b>	<b>6.1</b>

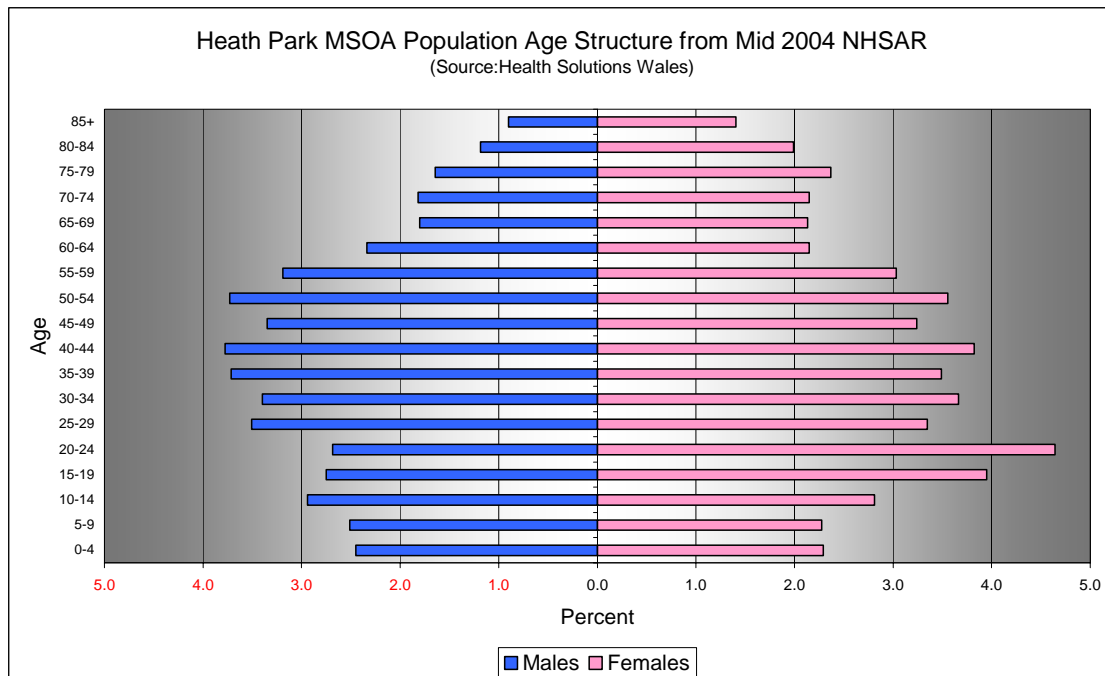
## Quinary Population Age Structure - 2004 MYE



Heath Park MSOA Population Age Structure 2004 MYE (Source: ONS)			
Age	Males	Females	Persons
0-4	200	100	300
5-9	200	100	300
10-14	200	200	400
15-19	200	300	500
20-24	200	200	400
25-29	100	100	300
30-34	200	200	400
35-39	200	200	400
40-44	200	200	500
45-49	200	200	400
50-54	200	200	400
55-59	200	200	400
60-64	100	100	300
65-69	100	100	200
70-74	100	100	200
75-79	100	100	200
80-84	100	100	200
85+	100	100	100
<b>Total</b>	<b>2,800</b>	<b>3,100</b>	<b>5,900</b>

Heath Park MSOA Population Age Structure 2004 MYE - Percentage of total Persons (Source: ONS)			
Age	Males	Females	Persons
<b>0-4</b>	3.0	2.5	5.5
<b>5-9</b>	2.9	2.4	5.3
<b>10-14</b>	3.0	3.0	6.0
<b>15-19</b>	3.2	4.4	7.7
<b>20-24</b>	2.6	4.1	6.7
<b>25-29</b>	2.4	2.4	4.9
<b>30-34</b>	2.9	3.6	6.5
<b>35-39</b>	3.8	3.8	7.6
<b>40-44</b>	3.8	3.9	7.6
<b>45-49</b>	3.1	3.4	6.5
<b>50-54</b>	3.6	3.6	7.2
<b>55-59</b>	3.2	3.2	6.3
<b>60-64</b>	2.2	2.2	4.4
<b>65-69</b>	1.7	2.3	4.0
<b>70-74</b>	1.9	2.2	4.1
<b>75-79</b>	1.6	2.4	4.0
<b>80-84</b>	1.1	2.0	3.1
<b>85+</b>	0.9	1.5	2.4
<b>Total</b>	<b>47.0</b>	<b>53.0</b>	<b>100.0</b>

## Quinary Population Age Structure Mid 2004 NHSAR



Heath Park MSOA Population Age Structure - NHSAR Mid 2004 (Source: HSW)			
Age	Males	Females	Persons
0-4	200	100	300
5-9	200	100	300
10-14	200	200	400
15-19	200	300	400
20-24	200	300	500
25-29	200	200	400
30-34	200	200	400
35-39	200	200	500
40-44	200	200	500
45-49	200	200	400
50-54	200	200	500
55-59	200	200	400
60-64	100	100	300
65-69	100	100	200
70-74	100	100	300
75-79	100	200	300
80-84	100	100	200
85+	100	100	100
<b>Total</b>	<b>3,000</b>	<b>3,300</b>	<b>6,300</b>

Heath Park MSOA Population Age Structure % of Total Persons - NHSAR Mid 2004 (Source: HSW)			
Age	Males	Females	Persons
0-4	2.4	2.3	4.7
5-9	2.5	2.3	4.8
10-14	2.9	2.8	5.8
15-19	2.7	3.9	6.7
20-24	2.7	4.6	7.3
25-29	3.5	3.3	6.9
30-34	3.4	3.7	7.1
35-39	3.7	3.5	7.2
40-44	3.8	3.8	7.6
45-49	3.3	3.2	6.6
50-54	3.7	3.6	7.3
55-59	3.2	3.0	6.2
60-64	2.3	2.1	4.5
65-69	1.8	2.1	3.9
70-74	1.8	2.1	4.0
75-79	1.6	2.4	4.0
80-84	1.2	2.0	3.2
85+	0.9	1.4	2.3
<b>Total</b>	<b>47.7</b>	<b>52.3</b>	<b>100.0</b>