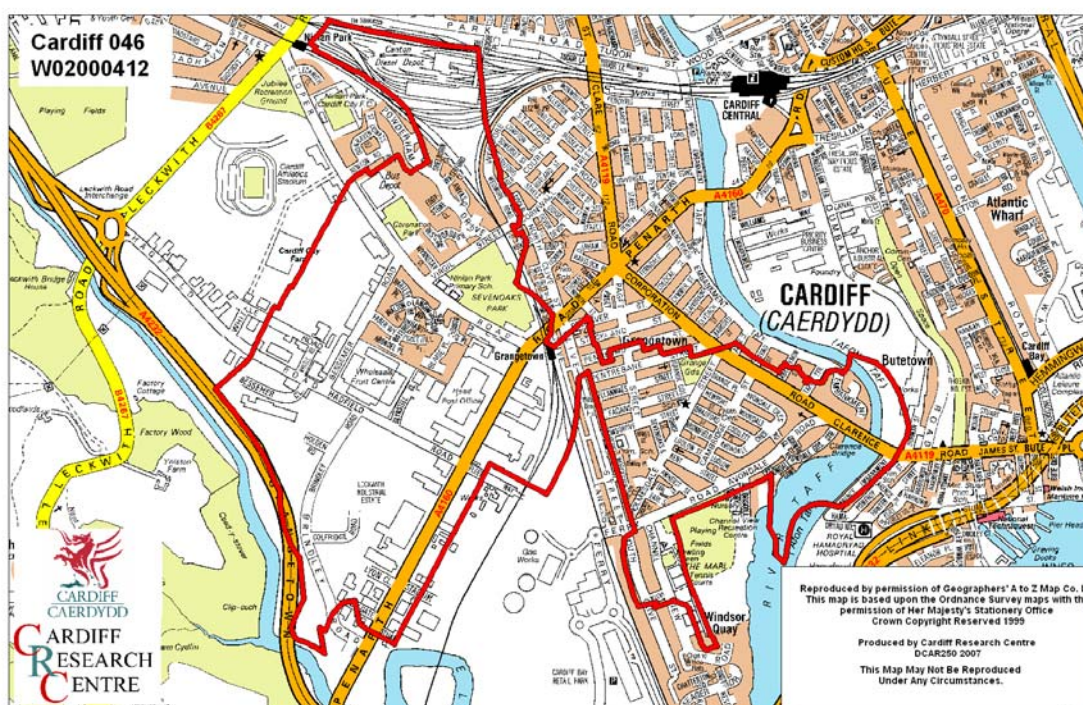


Leckwith Middle Super Output Area

A comparison of Population Age Structure's for Mid 2004 from the National Statistics experimental Mid Year Estimate and the National Health Service Administrative Records (NHSAR)

Figure: Leckwith MSOA (Cardiff West Locality)



Disclosure Control: Due to a requirement to observe the Registrar General's disclosure control protocols for experimental and official Mid Year Estimates of population it has been necessary to round population figures provided in this profile to the nearest 100 persons. Due to the danger of disclosure by difference the NHSAR population figures in this brief have also been rounded to the nearest 100 persons. For both datasets, when the population estimate was less than 50 persons, the value of 50 has been used. However, it is important to note that all graphics and the percentages presented in this profile have been produced using raw un-rounded estimates. The difference between NHSAR and MYE population estimates are also presented here in their un-rounded raw format.

Summary Key Statistics

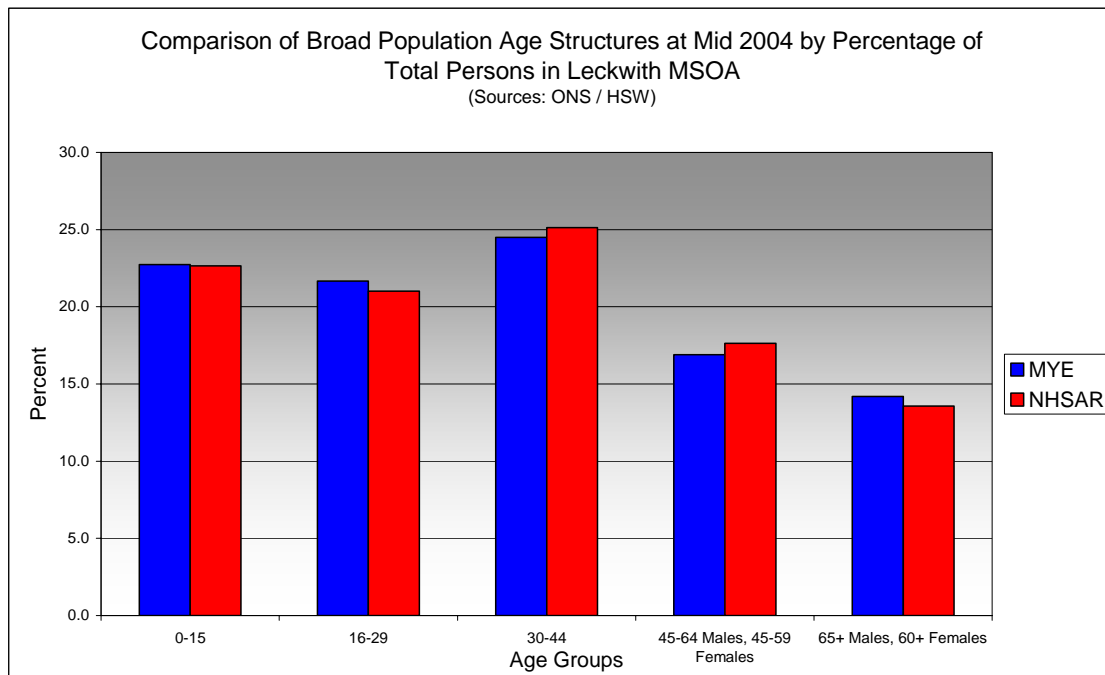
- In Leckwith total NHSAR population at Mid 2004 was 16.0% (approximately 1,000 persons) higher than the experimental Mid Year Estimate.
- Total male NHSAR population was 20.6% higher, while total female population was 11.5% higher.
- NHSAR population counts showed the greatest variance from the Experimental MYEs in the following age groups: 45 to 49 years 25.6% higher & those aged 35 to 39 years 22.2% higher.
- Leckwith is ranked 27th (MYE) and 24th (NHSAR) out of 47 MSOAs in Cardiff for it's total dependency ratio.
- Within the Cardiff South East Locality Leckwith is ranked 7th (MYE & NHSAR) out of 11 MSOAs for it's total dependency ratio.
- Leckwith is ranked 17th (MYE) and 11th (NHSAR) out of 47 MSOAs in Cardiff for the total number of younger dependents aged 0 to 14.
- Within it's locality Leckwith is ranked 7th (MYE) and 5th (NHSAR) out of 11 MSOAs for the total number of younger dependents aged 0 to 14.
- Leckwith is ranked 33rd (MYE) and 31st (NHSAR) out of 47 MSOAs for the total number of older dependents aged 65 plus.
- Within it's locality Leckwith is ranked 7th (MYE) and 6th (NHSAR) out of 11 MSOAs for the total number of older dependents aged 65 plus.
- The majority of dependent age groups (0 to 14 + 65 and over) are younger dependents aged 0 to 14, representing 63.4% (MYE) and 64.1% (NHSAR) of total dependents.

Dependency Ratios at Mid 2004 in Leckwith MSOA (Sources: Derived from data Supplid by ONS & HSW)		
	MYE	NHSAR
Dependents Aged 0 - 14	1,300	1,500
Dependents Aged 65 Plus	800	900
Total Dependents	2,100	2,400
Persons Aged 15 to 64	4,100	4,800
Total Persons	6,200	7,100
Leckwith Dependency Ratio	0.51	0.50
Locality Dependency Ratio	0.52	0.47
Cardiff Dependency Ratio	0.47	0.43
Wales Dependency Ratio	0.57	0.52

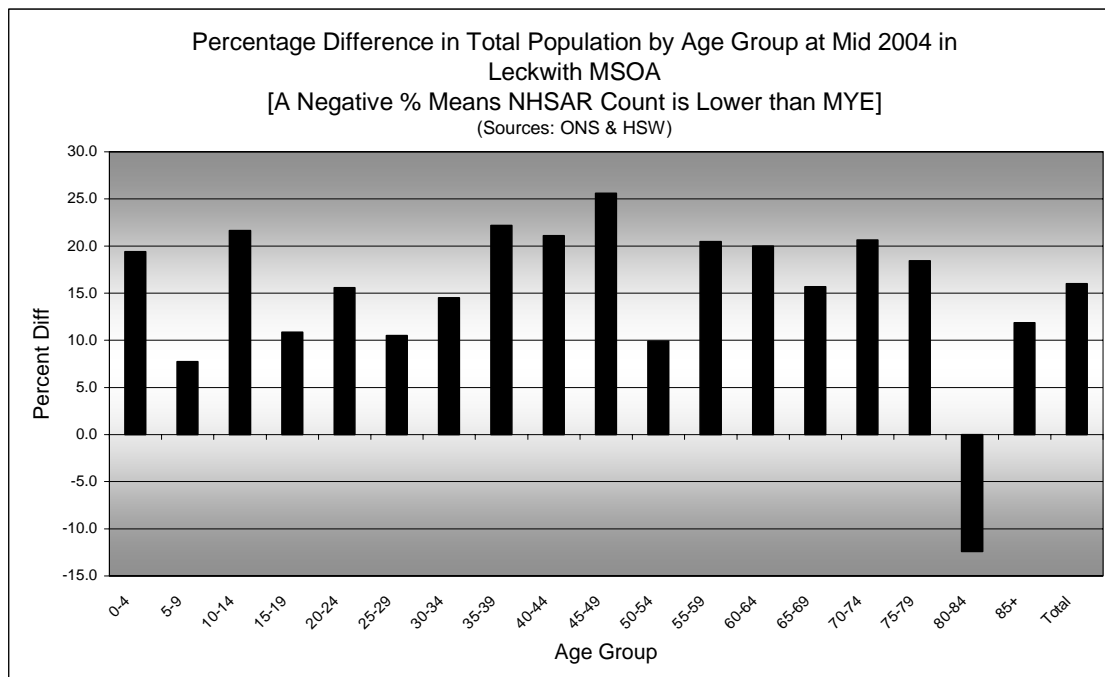
Broad Age Group Comparisons

Comparison of Population Sources by Broad Age Group for Mid 2004 in Leckwith MSOA						
	0-15	16-29	30-44	45-64 Males, 45-59 Females	65+ Males, 60+ Females	All Ages
MYE	1,400	1,300	1,500	1,000	900	6,200
NHSAR	1,600	1,500	1,800	1,300	1,000	7,100
Difference #	218	166	286	218	96	984
Difference %	15.6	12.5	19.0	21.0	11.0	16.0

Comparison of Broad Population Age Structures for Mid 2004 by Percentage of Total Population in Leckwith MSOA						
	0-15	16-29	30-44	45-64 Males, 45-59 Females	65+ Males, 60+ Females	All Ages
MYE	22.7	21.7	24.5	16.9	14.2	100.0
NHSAR	22.6	21.0	25.1	17.6	13.6	100.0

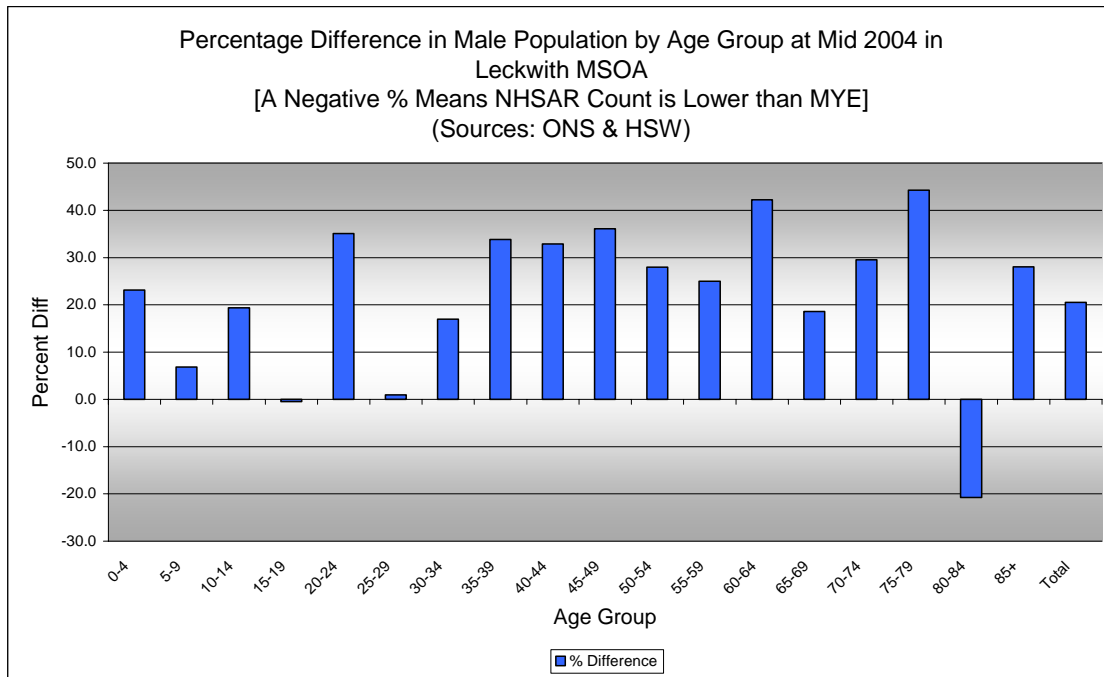


Quinary Age Group Comparisons – 2004 NHSAR Minus MYE

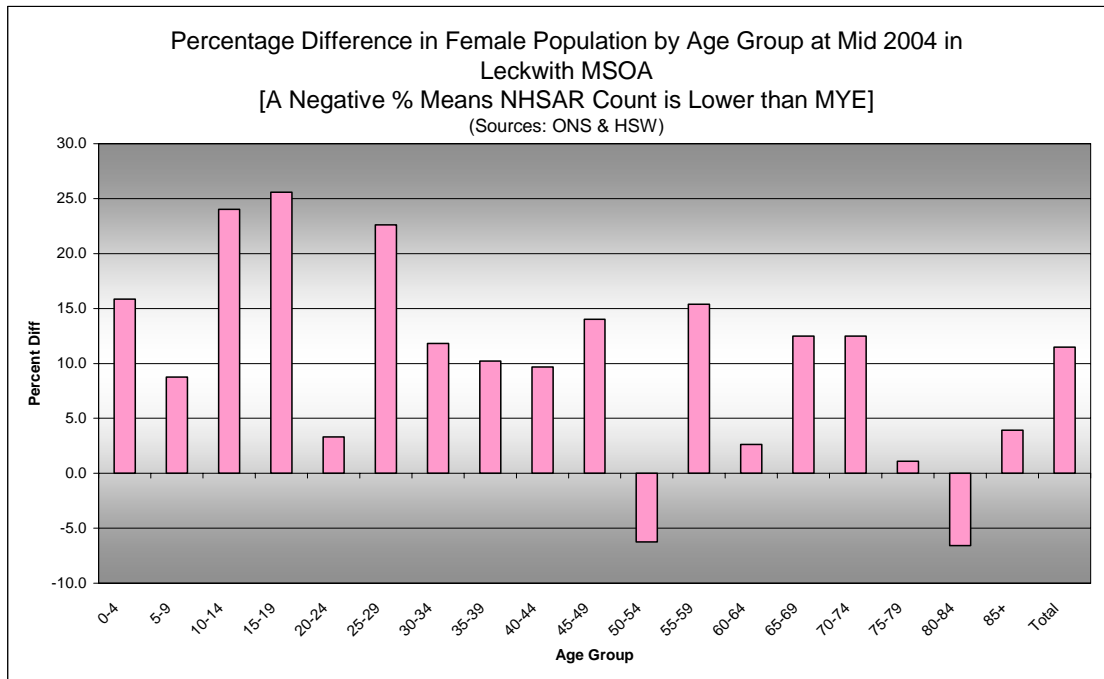


Comparison of Total Population by Age Group at Mid 2004 in Leckwith MSOA
 [Difference = NHSAR Minus MYE] (Sources: ONS & HSW)

Age	Persons (MYE)	Persons (NHSAR)	# Difference	% Difference
0-4	400	500	86	19.4
5-9	500	500	35	7.7
10-14	400	500	90	21.6
15-19	400	400	44	10.9
20-24	400	500	69	15.6
25-29	600	600	60	10.5
30-34	600	60	82	14.5
35-39	500	600	110	22.2
40-44	400	500	94	21.1
45-49	300	400	88	25.6
50-54	300	300	30	9.9
55-59	300	400	62	20.5
60-64	200	200	41	20.0
65-69	200	300	34	15.7
70-74	200	200	38	20.7
75-79	200	200	28	18.4
80-84	100	100	-16	-12.4
85+	100	100	9	11.8
Total	6,200	7,100	984	16.0



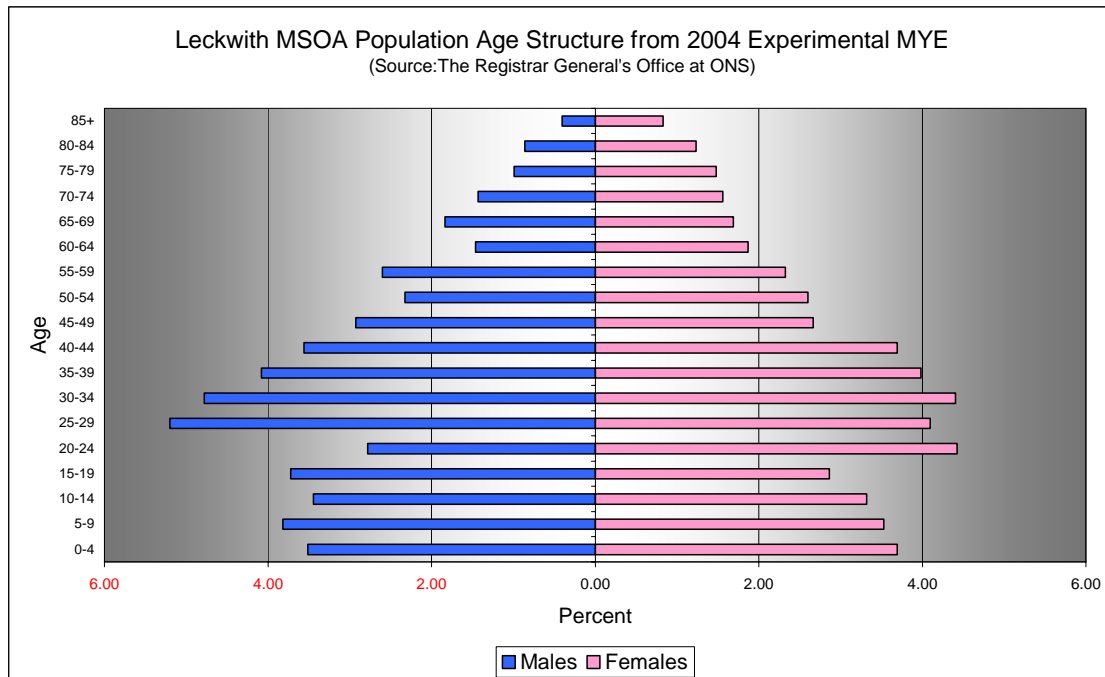
Comparison of Male Population by Age Group at Mid 2004 in Leckwith MSOA [Difference = NHSAR Minus MYE] (Sources: ONS & HSW)				
Age	Males (MYE)	Males (NHSAR)	# Difference	% Difference
0-4	200	300	50	23.1
5-9	200	300	16	6.8
10-14	200	300	41	19.3
15-19	200	200	-1	-0.4
20-24	200	200	60	35.1
25-29	300	300	3	0.9
30-34	300	300	50	17.0
35-39	300	300	85	33.9
40-44	200	300	72	32.9
45-49	200	200	65	36.1
50-54	100	200	40	28.0
55-59	200	200	40	25.0
60-64	100	100	38	42.2
65-69	100	100	21	18.6
70-74	100	100	26	29.5
75-79	100	100	27	44.3
80-84	100	50	-11	-20.8
85+	50	50	7	28.0
Total	3,100	3,700	629	20.6



Comparison of Female Population by Age Group at Mid 2004 in Leckwith MSOA
 [Difference = NHSAR Minus MYE] (Sources: ONS & HSW)

Age	Females (MYE)	Females (NHSAR)	# Difference	% Difference
0-4	200	300	36	15.9
5-9	200	200	19	8.8
10-14	200	300	49	24.0
15-19	200	200	45	25.6
20-24	300	300	9	3.3
25-29	300	300	57	22.6
30-34	300	300	32	11.8
35-39	200	300	25	10.2
40-44	200	200	22	9.7
45-49	200	200	23	14.0
50-54	200	200	-10	-6.3
55-59	100	200	22	15.4
60-64	100	100	3	2.6
65-69	100	100	13	12.5
70-74	100	100	12	12.5
75-79	100	100	1	1.1
80-84	100	100	-5	-6.6
85+	100	100	2	3.9
Total	3,100	3,400	355	11.5

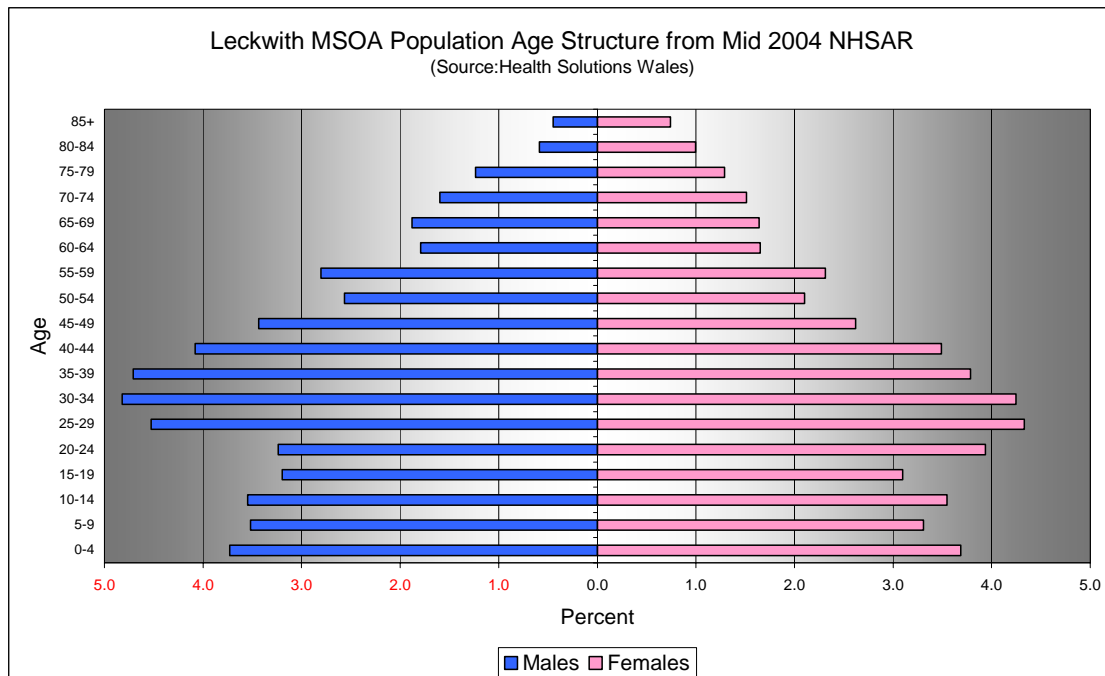
Quinary Population Age Structure - 2004 MYE



Leckwith MSOA Population Age Structure 2004 MYE (Source: ONS)			
Age	Males	Females	Persons
0-4	200	200	400
5-9	200	200	500
10-14	200	200	400
15-19	200	200	400
20-24	200	300	400
25-29	300	300	600
30-34	300	300	600
35-39	300	200	500
40-44	200	200	400
45-49	200	200	300
50-54	100	200	300
55-59	200	100	300
60-64	100	100	200
65-69	100	100	200
70-74	100	100	200
75-79	100	100	200
80-84	100	100	100
85+	50	100	100
Total	3,100	3,100	6,200

Leckwith MSOA Population Age Structure 2004 MYE - Percentage of total Persons (Source: ONS)			
Age	Males	Females	Persons
0-4	3.5	3.7	7.2
5-9	3.8	3.5	7.3
10-14	3.4	3.3	6.8
15-19	3.7	2.9	6.6
20-24	2.8	4.4	7.2
25-29	5.2	4.1	9.3
30-34	4.8	4.4	9.2
35-39	4.1	4.0	8.1
40-44	3.6	3.7	7.3
45-49	2.9	2.7	5.6
50-54	2.3	2.6	4.9
55-59	2.6	2.3	4.9
60-64	1.5	1.9	3.3
65-69	1.8	1.7	3.5
70-74	1.4	1.6	3.0
75-79	1.0	1.5	2.5
80-84	0.9	1.2	2.1
85+	0.4	0.8	1.2
Total	49.7	50.3	100.0

Quinary Population Age Structure Mid 2004 NHSAR



Leckwith MSOA Population Age Structure - NHSAR Mid 2004 (Source: HSW)			
Age	Males	Females	Persons
0-4	300	300	500
5-9	300	200	500
10-14	300	300	500
15-19	200	200	400
20-24	200	300	500
25-29	300	300	600
30-34	300	300	600
35-39	300	300	600
40-44	300	200	500
45-49	200	200	400
50-54	200	200	300
55-59	200	200	400
60-64	100	100	200
65-69	100	100	300
70-74	100	100	200
75-79	100	100	200
80-84	50	100	100
85+	50	100	100
Total	3,700	3,400	7,100

Leckwith MSOA Population Age Structure % of Total Persons - NHSAR Mid 2004 (Source: HSW)			
Age	Males	Females	Persons
0-4	3.7	3.7	7.4
5-9	3.5	3.3	6.8
10-14	3.5	3.5	7.1
15-19	3.2	3.1	6.3
20-24	3.2	3.9	7.2
25-29	4.5	4.3	8.9
30-34	4.8	4.2	9.1
35-39	4.7	3.8	8.5
40-44	4.1	3.5	7.6
45-49	3.4	2.6	6.1
50-54	2.6	2.1	4.7
55-59	2.8	2.3	5.1
60-64	1.8	1.7	3.4
65-69	1.9	1.6	3.5
70-74	1.6	1.5	3.1
75-79	1.2	1.3	2.5
80-84	0.6	1.0	1.6
85+	0.4	0.7	1.2
Total	51.7	48.3	100.0