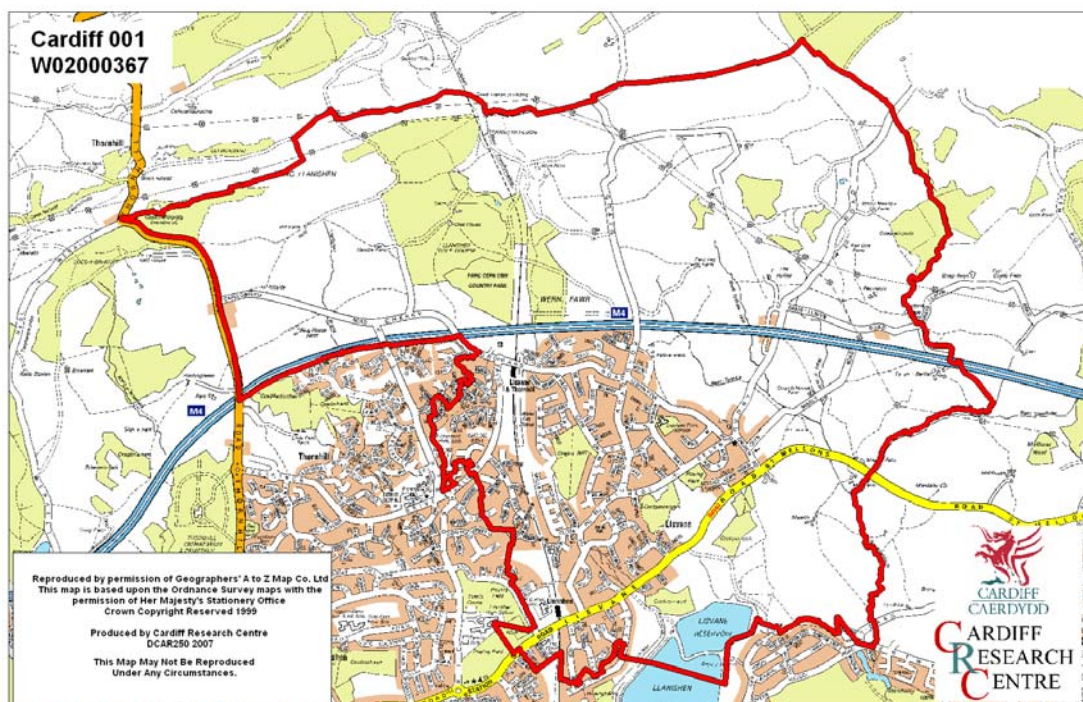


## Lisvane Middle Super Output Area

A comparison of Population Age Structure's for Mid 2004 from the National Statistics experimental Mid Year Estimate and the National Health Service Administrative Records (NHSAR)

Figure: Lisvane MSOA (Cardiff Central Locality)



**Disclosure Control:** Due to a requirement to observe the Registrar General's disclosure control protocols for experimental and official Mid Year Estimates of population it has been necessary to round population figures provided in this profile to the nearest 100 persons. Due to the danger of disclosure by difference the NHSAR population figures in this brief have also been rounded to the nearest 100 persons. For both datasets, when the population estimate was less than 50 persons, the value of 50 has been used. However, it is important to note that all graphics and the percentages presented in this profile have been produced using raw un-rounded estimates. The difference between NHSAR and MYE population estimates are also presented here in their un-rounded raw format.

## Summary Key Statistics

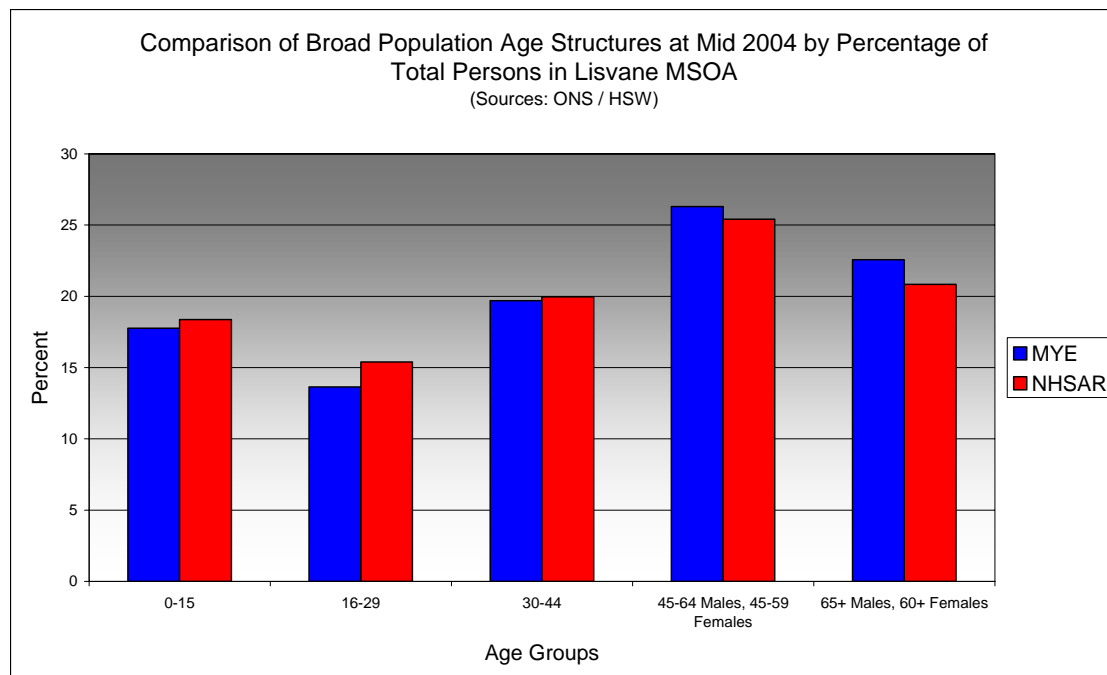
- In Lisvane total NHSAR population at Mid 2004 was 8.8% (approximately 500 persons) higher than the experimental Mid Year Estimate.
- Total male NHSAR population was 8.9% higher, while total female population was 8.6% higher.
- NHSAR population counts showed the greatest variance from the Experimental MYEs in the following age groups: 25 to 29 years 39.4% higher & those aged 20 to 24 years 32.0% higher.
- Lisvane is ranked 15<sup>th</sup> (MYE) and 12<sup>th</sup> (NHSAR) out of 47 MSOAs in Cardiff for it's total dependency ratio.
- Within the Cardiff North Locality Lisvane is ranked 5<sup>th</sup> (MYE & NHSAR) out of 12 MSOAs for it's total dependency ratio.
- Lisvane is ranked 36<sup>th</sup> (MYE) and 33<sup>rd</sup> (NHSAR) out of 47 MSOAs in Cardiff for the total number of younger dependents aged 0 to 14.
- Within it's locality Lisvane is ranked 8<sup>th</sup> (MYE & NHSAR) out of 12 MSOAs for the total number of younger dependents aged 0 to 14.
- Lisvane is ranked 10<sup>th</sup> (MYE) and 11<sup>th</sup> (NHSAR) out of 47 MSOAs for the total number of older dependents aged 65 plus.
- Within it's locality Lisvane is ranked 5<sup>th</sup> (MYE) and 6<sup>th</sup> (NHSAR) out of 12 MSOAs for the total number of older dependents aged 65 plus.
- The majority of dependent age groups (0 to 14 + 65 and over) are older dependents aged 65 and over, representing 54.7% (MYE) and 51.7% (NHSAR) of total dependents.

<b>Dependency Ratios at Mid 2004 in Lisvane MSOA</b> (Sources: Derived from Data Supplied by ONS & HSW)		
	<b>MYE</b>	<b>NHSAR</b>
<b>Dependents Aged 0 - 14</b>	1,000	1,100
<b>Dependents Aged 65 Plus</b>	1,200	1,200
<b>Total Dependents</b>	2,200	2,300
<b>Persons Aged 15 to 64</b>	3,900	4,300
<b>Total Persons</b>	6,100	6,600
<b>Lisvane Dependency Ratio</b>	0.57	0.55
<b>Locality Dependency Ratio</b>	0.52	0.48
<b>Cardiff Dependency Ratio</b>	0.47	0.43
<b>Wales Dependency Ratio</b>	0.57	0.52

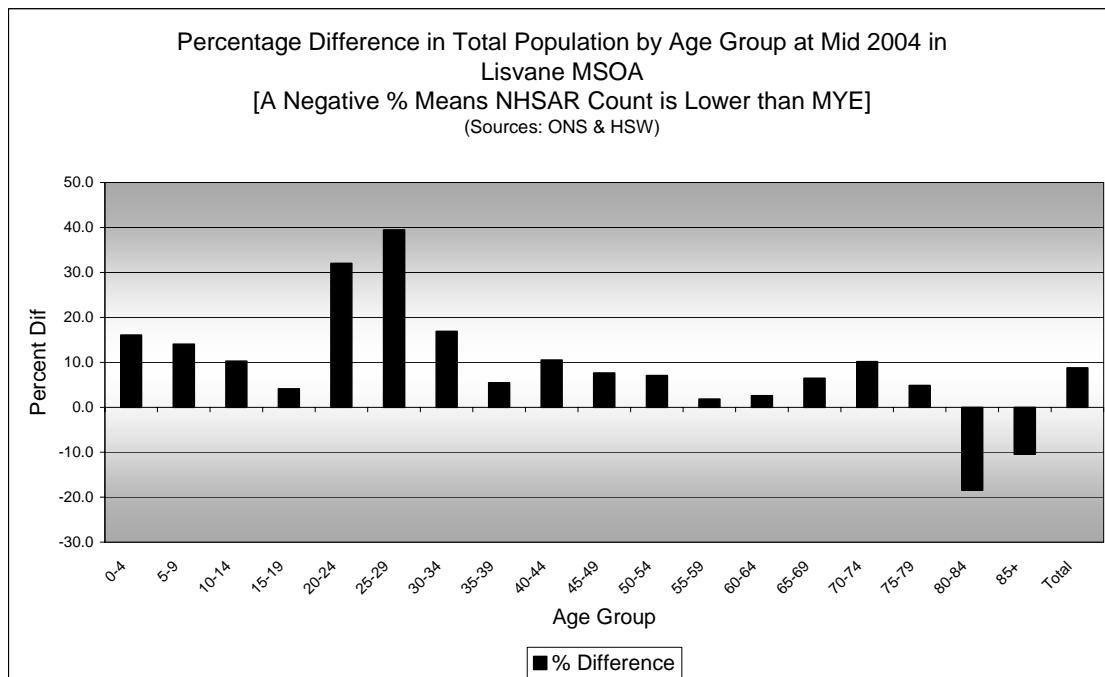
## Broad Age Group Comparisons

Comparison of Population Sources by Broad Age Group for Mid 2004 in Lisvane MSOA						
	0-15	16-29	30-44	45-64 Males, 45-59 Females	65+ Males, 60+ Females	All Ages
<b>MYE</b>	1,100	800	1,200	1,600	1,400	6,100
<b>NHSAR</b>	1,200	1,000	1,300	1,700	1,400	6,600
<b>Difference #</b>	134	189	123	81	6	533
<b>Difference %</b>	12.4	22.8	10.3	5.1	0.4	8.8

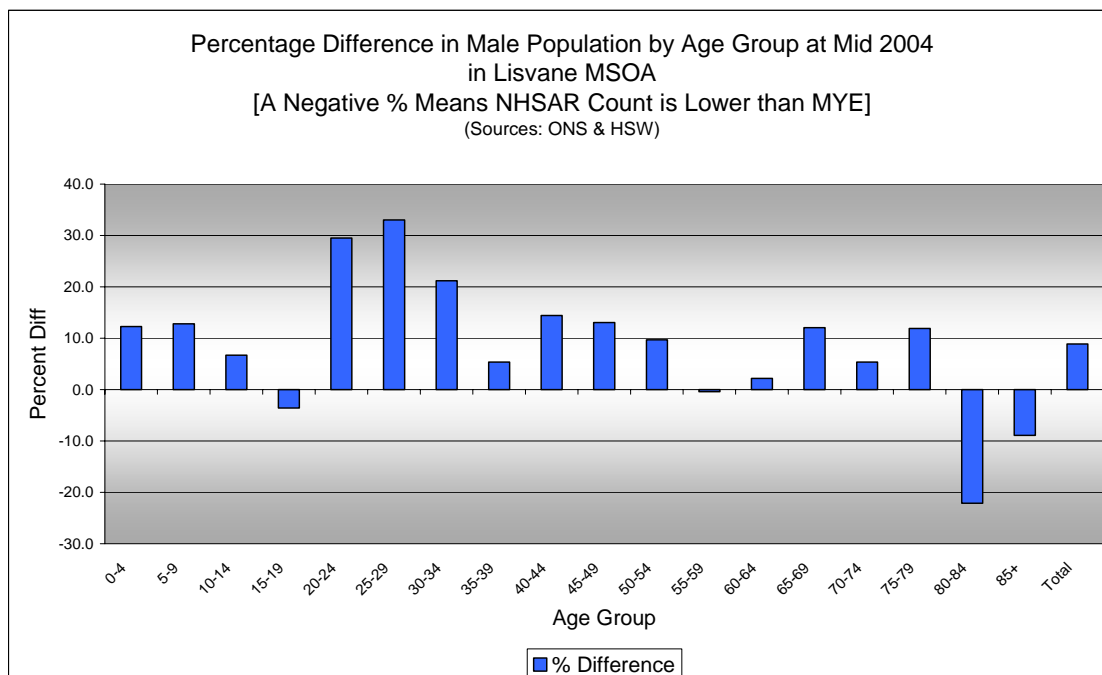
Comparison of Broad Population Age Structures for Mid 2004 by Percentage of Total Population in Lisvane MSOA						
Lisvane	0-15	16-29	30-44	45-64 Males, 45-59 Females	65+ Males, 60+ Females	All Ages
<b>MYE</b>	17.8	13.6	19.7	26.3	22.6	100
<b>NHSAR</b>	18.4	15.4	20.0	25.4	20.8	100



## Quinary Age Group Comparisons – 2004 NHSAR Minus MYE

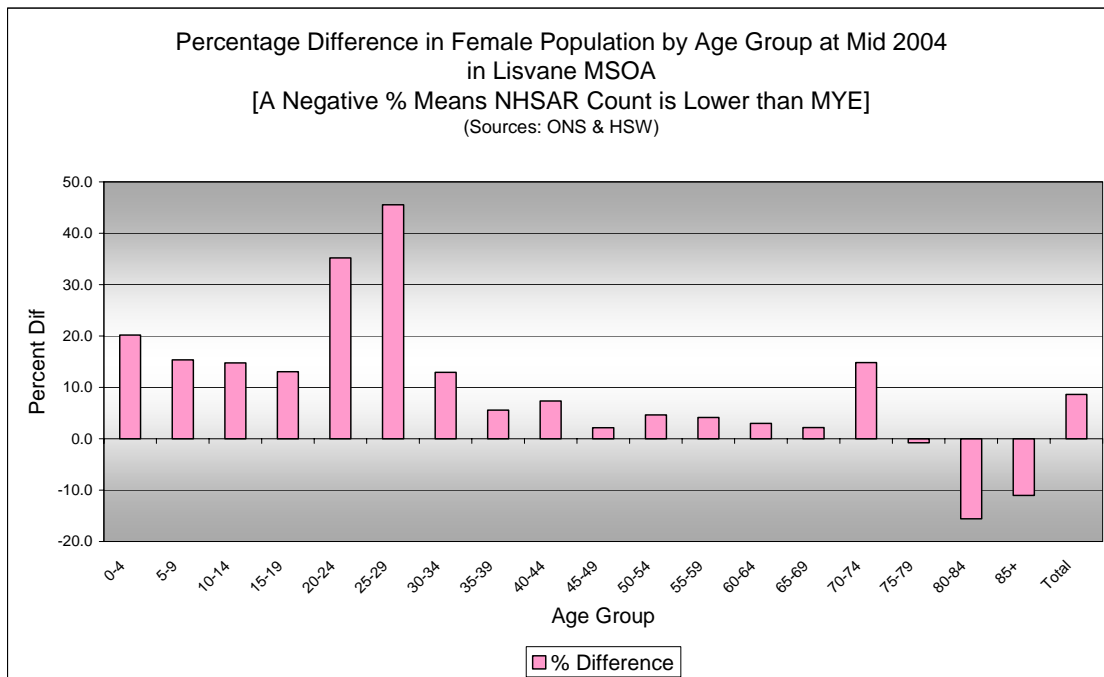


Comparison of Total Population by Age Group at Mid 2004 in Lisvane MSOA [Difference = NHSAR Minus MYE] (Sources: ONS & HSW)				
Age	Persons (MYE)	Persons (NHSAR)	# Difference	% Difference
0-4	200	300	38	16.1
5-9	400	400	51	14.0
10-14	400	400	41	10.3
15-19	400	400	17	4.1
20-24	300	400	90	32.0
25-29	200	300	86	39.4
30-34	300	300	48	16.9
35-39	400	400	23	5.5
40-44	500	500	52	10.5
45-49	500	500	36	7.6
50-54	500	500	32	7.0
55-59	500	500	9	1.8
60-64	300	400	9	2.6
65-69	300	300	21	6.4
70-74	300	300	27	10.2
75-79	200	200	11	4.9
80-84	200	200	-40	-18.4
85+	200	200	-18	-10.5
<b>Total</b>	<b>6,100</b>	<b>6,600</b>	<b>533</b>	<b>8.8</b>



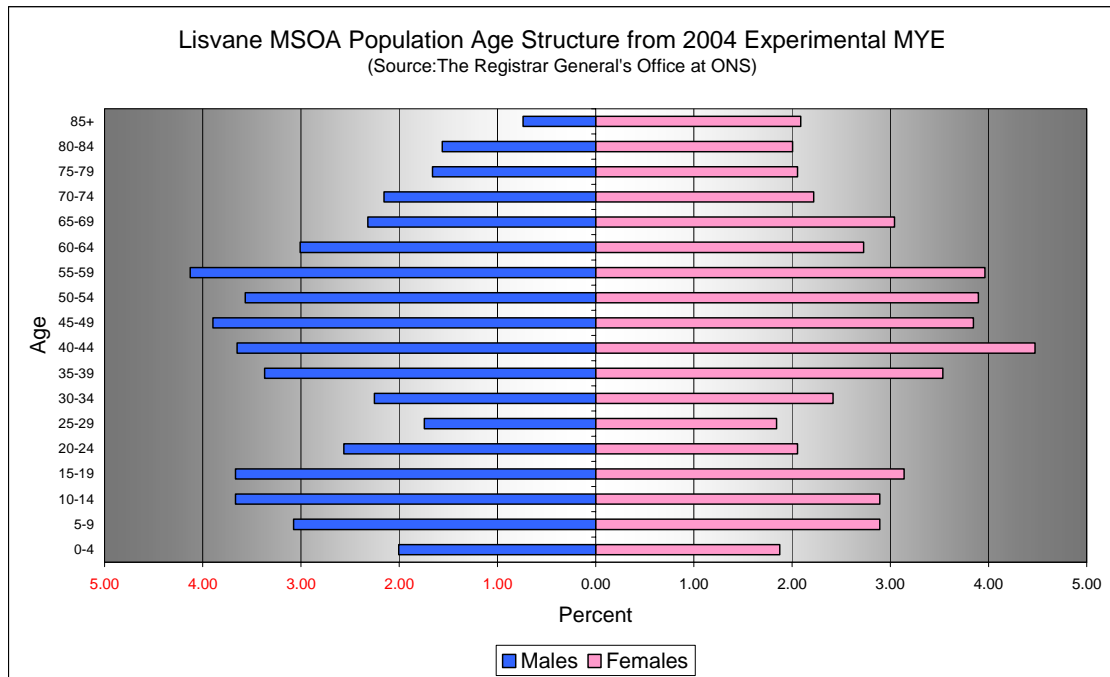
**Comparison of Male Population by Age Group at Mid 2004 in Lisvane MSOA**  
[Difference = NHSAR Minus MYE] (Sources: ONS & HSW)

Age	Males (MYE)	Males (NHSAR)	# Difference	% Difference
0-4	100	100	15	12.3
5-9	200	200	24	12.8
10-14	200	200	15	6.7
15-19	200	200	-8	-3.6
20-24	200	200	46	29.5
25-29	100	100	35	33.0
30-34	100	200	29	21.2
35-39	200	200	11	5.4
40-44	200	300	32	14.4
45-49	200	300	31	13.1
50-54	200	200	21	9.7
55-59	300	300	-1	-0.4
60-64	200	200	4	2.2
65-69	100	200	17	12.1
70-74	100	100	7	5.3
75-79	100	100	12	11.9
80-84	100	100	-21	-22.1
85+	50	50	-4	-8.9
<b>Total</b>	<b>3,000</b>	<b>3,200</b>	<b>265</b>	<b>8.9</b>



<b>Comparison of Female Population by Age Group at Mid 2004 in Lisvane MSOA</b> [Difference = NHSAR Minus MYE] (Sources: ONS & HSW)				
Age	Females (MYE)	Females (NHSAR)	# Difference	% Difference
0-4	100	100	23	20.2
5-9	200	200	27	15.3
10-14	200	200	26	14.8
15-19	200	200	25	13.1
20-24	100	200	44	35.2
25-29	100	200	51	45.5
30-34	100	200	19	12.9
35-39	200	200	12	5.6
40-44	300	300	20	7.4
45-49	200	200	5	2.1
50-54	200	200	11	4.6
55-59	200	300	10	4.1
60-64	200	200	5	3.0
65-69	200	200	4	2.2
70-74	100	200	20	14.8
75-79	100	100	-1	-0.8
80-84	100	100	-19	-15.6
85+	100	100	-14	-11.0
<b>Total</b>	<b>3,100</b>	<b>3,400</b>	<b>268</b>	<b>8.6</b>

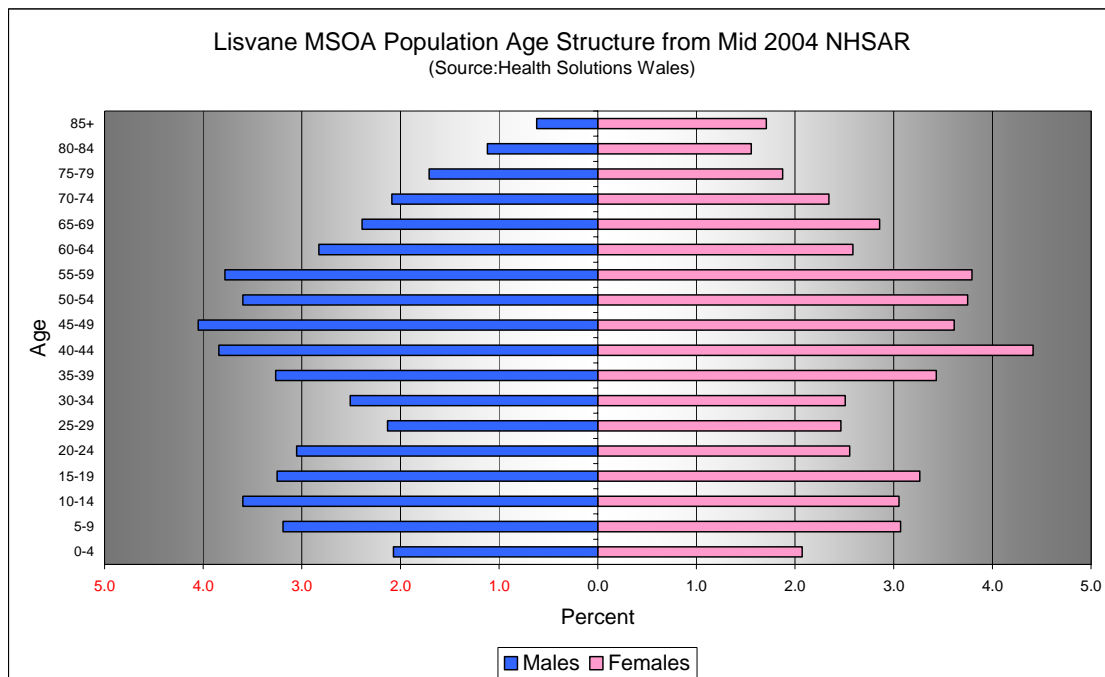
## Quinary Population Age Structure - 2004 MYE



Lisvane MSOA Population Age Structure 2004 MYE (Source: ONS)			
Age	Males	Females	Persons
0-4	100	100	200
5-9	200	200	400
10-14	200	200	400
15-19	200	200	400
20-24	200	100	300
25-29	100	100	200
30-34	100	100	300
35-39	200	200	400
40-44	200	300	500
45-49	200	200	500
50-54	200	200	500
55-59	300	200	500
60-64	200	200	300
65-69	100	200	300
70-74	100	100	300
75-79	100	100	200
80-84	100	100	200
85+	50	100	200
<b>Total</b>	<b>3,000</b>	<b>3,100</b>	<b>6,100</b>

Lisvane MSOA Population Age Structure 2004 MYE - Percentage of total Persons (Source: ONS)			
Age	Males	Females	Persons
0-4	2.0	1.9	3.9
5-9	3.1	2.9	6.0
10-14	3.7	2.9	6.6
15-19	3.7	3.1	6.8
20-24	2.6	2.1	4.6
25-29	1.7	1.8	3.6
30-34	2.3	2.4	4.7
35-39	3.4	3.5	6.9
40-44	3.7	4.5	8.1
45-49	3.9	3.8	7.7
50-54	3.6	3.9	7.5
55-59	4.1	4.0	8.1
60-64	3.0	2.7	5.7
65-69	2.3	3.0	5.4
70-74	2.2	2.2	4.4
75-79	1.7	2.1	3.7
80-84	1.6	2.0	3.6
85+	0.7	2.1	2.8
<b>Total</b>	<b>49.0</b>	<b>51.0</b>	<b>100.0</b>

## Quinary Population Age Structure Mid 2004 NHSAR



Lisvane MSOA Population Age Structure - NHSAR Mid 2004 (Source: HSW)			
Age	Males	Females	Persons
0-4	100	100	300
5-9	200	200	400
10-14	200	200	400
15-19	200	200	400
20-24	200	200	400
25-29	100	200	300
30-34	200	200	300
35-39	200	200	400
40-44	300	300	500
45-49	300	200	500
50-54	200	200	500
55-59	300	300	500
60-64	200	200	400
65-69	200	200	300
70-74	100	200	300
75-79	100	100	200
80-84	100	100	200
85+	50	100	200
<b>Total</b>	<b>3,200</b>	<b>3,400</b>	<b>6,600</b>

Lisvane MSOA Population Age Structure % of Total Persons - NHSAR Mid 2004 (Source: HSW)			
Age	Males	Females	Persons
0-4	2.1	2.1	4.1
5-9	3.2	3.1	6.3
10-14	3.6	3.1	6.7
15-19	3.3	3.3	6.5
20-24	3.1	2.6	5.6
25-29	2.1	2.5	4.6
30-34	2.5	2.5	5.0
35-39	3.3	3.4	6.7
40-44	3.8	4.4	8.3
45-49	4.1	3.6	7.7
50-54	3.6	3.7	7.3
55-59	3.8	3.8	7.6
60-64	2.8	2.6	5.4
65-69	2.4	2.9	5.2
70-74	2.1	2.3	4.4
75-79	1.7	1.9	3.6
80-84	1.1	1.6	2.7
85+	0.6	1.7	2.3
<b>Total</b>	<b>49.1</b>	<b>50.9</b>	<b>100.0</b>