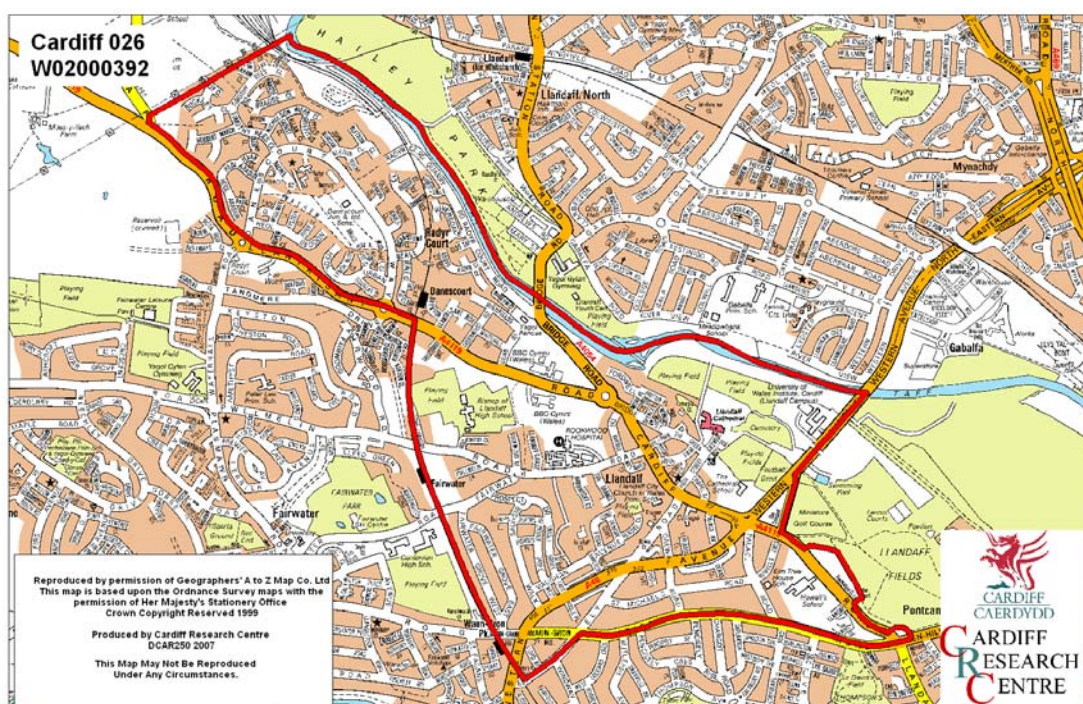


Llandaff Middle Super Output Area

A comparison of Population Age Structure's for Mid 2004 from the National Statistics experimental Mid Year Estimate and the National Health Service Administrative Records (NHSAR)

Figure: Llandaff MSOA (Cardiff Central Locality)



Disclosure Control: Due to a requirement to observe the Registrar General's disclosure control protocols for experimental and official Mid Year Estimates of population it has been necessary to round population figures provided in this profile to the nearest 100 persons. Due to the danger of disclosure by difference the NHSAR population figures in this brief have also been rounded to the nearest 100 persons. For both datasets, when the population estimate was less than 50 persons, the value of 50 has been used. However, it is important to note that all graphics and the percentages presented in this profile have been produced using raw un-rounded estimates. The difference between NHSAR and MYE population estimates are also presented here in their un-rounded raw format.

Summary Key Statistics

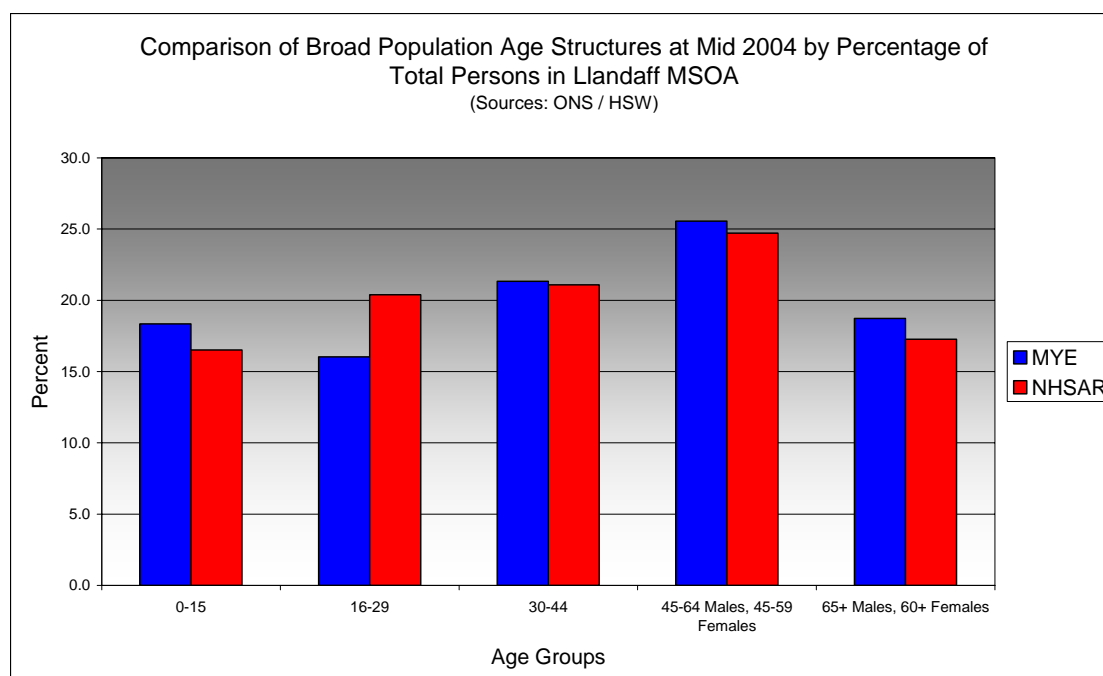
- In Llandaff total NHSAR population at Mid 2004 was 11.0% (approximately 950 persons) higher than the experimental Mid Year Estimate.
- Total male NHSAR population was 12.8% higher, while total female population was 9.4% higher.
- NHSAR population counts showed the greatest variance from the Experimental MYEs in the following age groups: 20 to 24 years 82.2% higher & those aged 25 to 29 years 29.6% higher.
- Llandaff is ranked 28th (MYE) and 32nd (NHSAR) out of 47 MSOAs in Cardiff for it's total dependency ratio.
- Within the Cardiff West Locality Llandaff is ranked 8th (MYE) and 10th (NHSAR) out of 12 MSOAs for it's total dependency ratio.
- Llandaff is ranked 9th (MYE) and 13th (NHSAR) out of 47 MSOAs in Cardiff for the total number of younger dependents aged 0 to 14.
- Within it's locality Landaff is ranked 2nd (MYE) and 3rd (NHSAR) out of 13 MSOAs for the total number of younger dependents aged 0 to 14.
- Llandaff is ranked 4th (MYE & NHSAR) out of 47 MSOAs for the total number of older dependents aged 65 plus.
- Within it's locality Llandaff is ranked 1st (MYE & NHSAR) out of 13 MSOAs for the total number of older dependents aged 65 plus.
- A small majority of dependent age groups (0 to 14 + 65 and over) are younger dependents aged 0 to 14, representing 51.7% (MYE) and 50.7% (NHSAR) of total dependents.

Dependency Ratios at Mid 2004 in Llandaff MSOA (Sources: Derived from data Supplied by ONS & HSW)		
	MYE	NHSAR
Dependents Aged 0 - 14	1,500	1,500
Dependents Aged 65 Plus	1,400	1,500
Total Dependents	2,900	3,000
Persons Aged 15 to 64	5,900	6,800
Total Persons	8,800	9,800
Llandaff Dependency Ratio	0.49	0.43
Locality Dependency Ratio	0.52	0.47
Cardiff Dependency Ratio	0.47	0.43
Wales Dependency Ratio	0.57	0.52

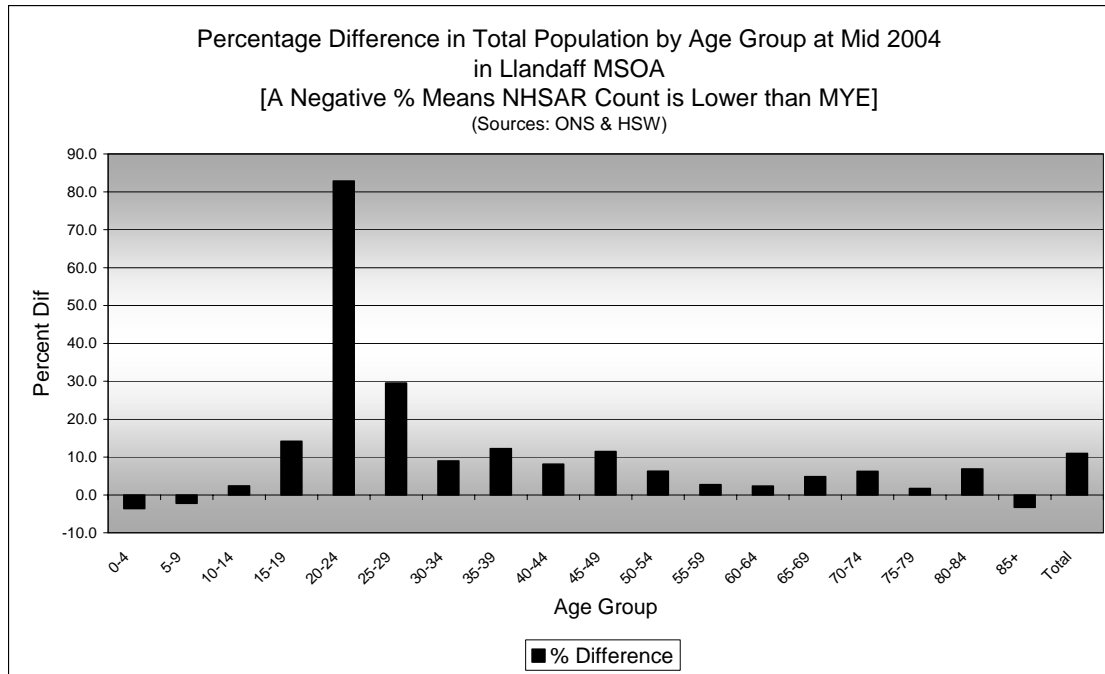
Broad Age Group Comparisons

Comparison of Population Sources by Broad Age Group for Mid 2004 in Llandaff MSOA						
	0-15	16-29	30-44	45-64 Males, 45-59 Females	65+ Males, 60+ Females	All Ages
MYE	1,600	1,400	1,900	2,300	1,700	8,800
NHSAR	1,600	2,000	2,100	2,400	1,700	9,800
Difference #	-1	583	183	165	38	968
Difference %	-0.1	41.2	9.7	7.3	2.3	11.0

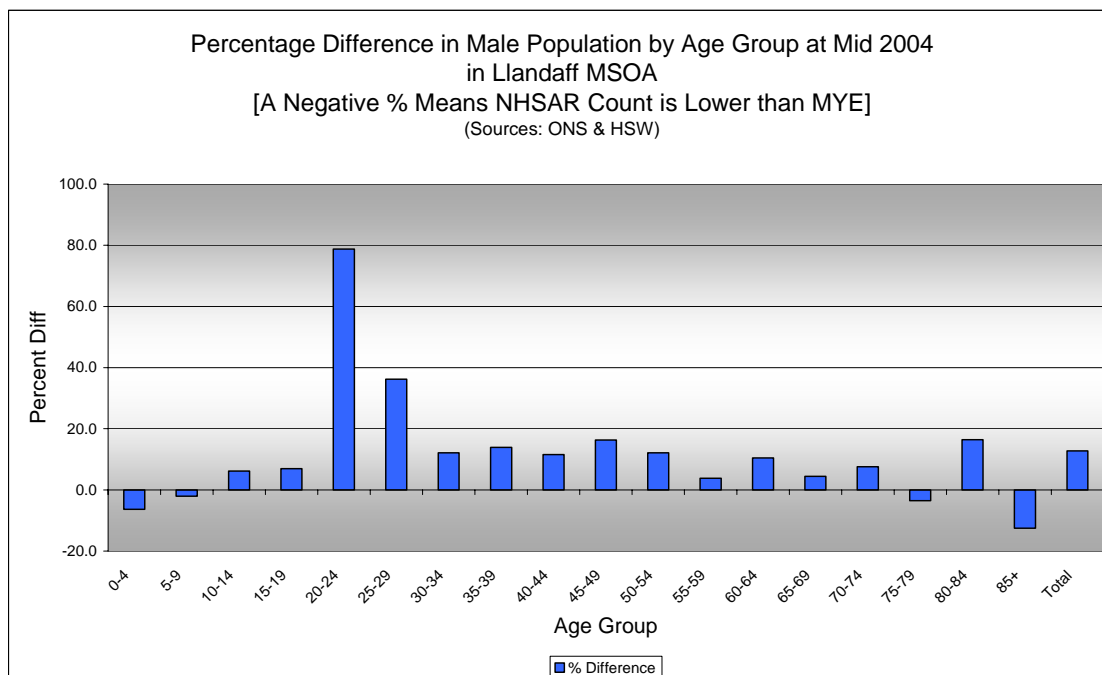
Comparison of Broad Population Age Structures for Mid 2004 by Percentage of Total Population in Llandaff MSOA						
	0-15	16-29	30-44	45-64 Males, 45-59 Females	65+ Males, 60+ Females	All Ages
MYE	18.3	16.0	21.3	25.6	18.7	100.0
NHSAR	16.5	20.4	21.1	24.7	17.3	100.0



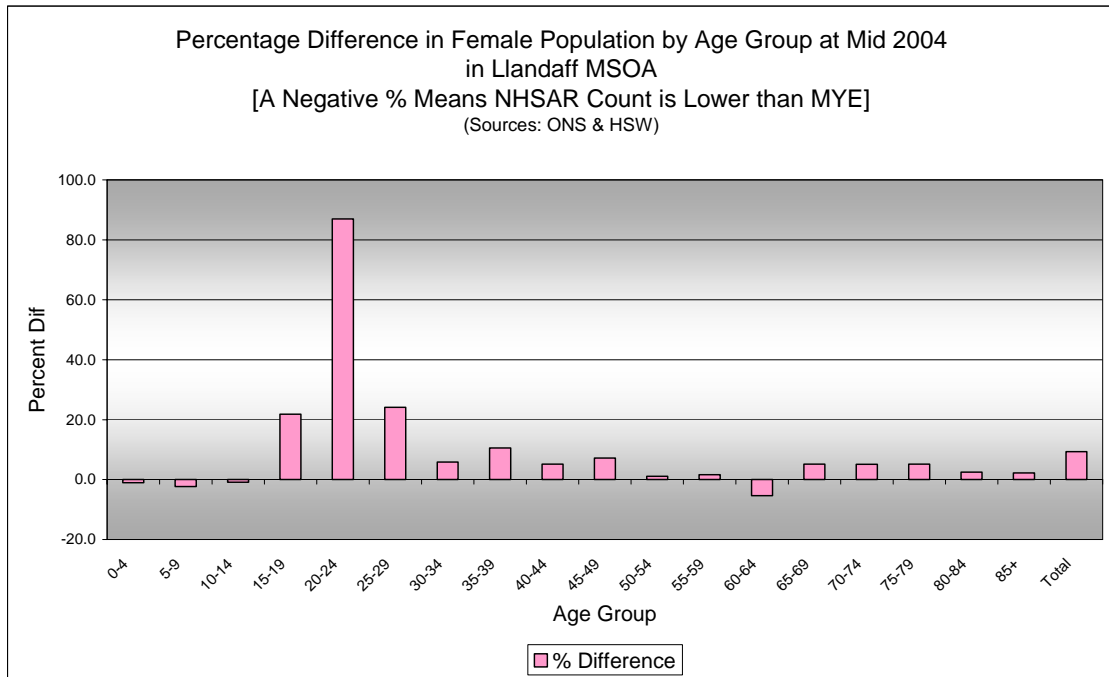
Quinary Age Group Comparisons – 2004 NHSAR Minus MYE



Comparison of Total Population by Age Group at Mid 2004 in Llandaff MSOA [Difference = NHSAR Minus MYE] (Sources: ONS & HSW)				
Age	Persons (MYE)	Persons (NHSAR)	# Difference	% Difference
0-4	400	400	-14	-3.6
5-9	500	500	-11	-2.2
10-14	600	600	15	2.4
15-19	600	700	87	14.2
20-24	400	800	367	82.8
25-29	500	600	138	29.6
30-34	500	600	49	9.0
35-39	600	700	76	12.2
40-44	700	800	58	8.1
45-49	700	800	82	11.5
50-54	700	700	41	6.3
55-59	700	700	18	2.7
60-64	500	500	11	2.3
65-69	400	400	17	4.8
70-74	300	300	20	6.2
75-79	300	300	5	1.7
80-84	200	200	16	6.9
85+	200	200	-7	-3.3
Total	8,800	9,800	968	11.0

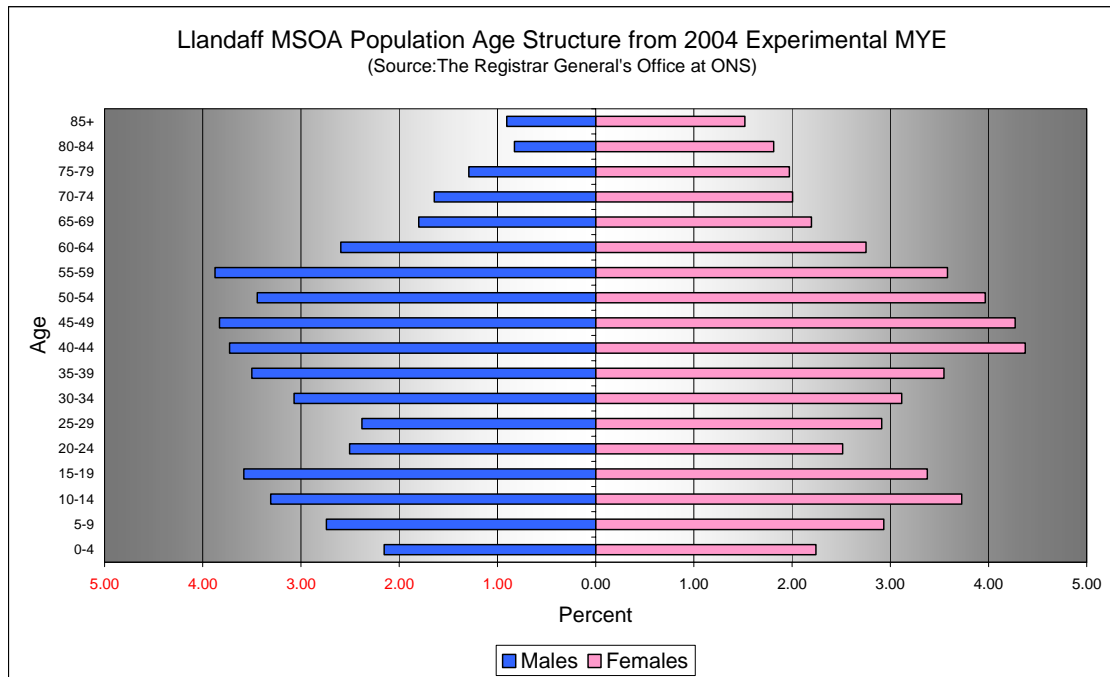


Comparison of Male Population by Age Group at Mid 2004 in Llandaff MSOA [Difference = NHSAR Minus MYE] (Sources: ONS & HSW)				
Age	Males (MYE)	Males (NHSAR)	# Difference	% Difference
0-4	200	200	-12	-6.3
5-9	200	200	-5	-2.1
10-14	300	300	18	6.2
15-19	300	300	22	7.0
20-24	200	400	174	78.7
25-29	200	300	76	36.2
30-34	300	300	33	12.2
35-39	300	400	43	13.9
40-44	300	400	38	11.6
45-49	300	400	55	16.3
50-54	300	300	37	12.2
55-59	300	400	13	3.8
60-64	200	300	24	10.5
65-69	200	200	7	4.4
70-74	100	200	11	7.6
75-79	100	100	-4	-3.5
80-84	100	100	12	16.4
85+	100	100	-10	-12.5
Total	4,200	4,700	532	12.8



Comparison of Female Population by Age Group at Mid 2004 in Llandaff MSOA [Difference = NHSAR Minus MYE] (Sources: ONS & HSW)				
Age	Females (MYE)	Females (NHSAR)	# Difference	% Difference
0-4	200	200	-2	-1.0
5-9	300	300	-6	-2.3
10-14	300	300	-3	-0.9
15-19	300	400	65	21.8
20-24	200	400	193	86.9
25-29	300	300	62	24.1
30-34	300	300	16	5.8
35-39	300	300	33	10.5
40-44	400	400	20	5.2
45-49	400	400	27	7.2
50-54	400	400	4	1.1
55-59	300	300	5	1.6
60-64	200	200	-13	-5.3
65-69	200	200	10	5.2
70-74	200	200	9	5.1
75-79	200	200	9	5.2
80-84	200	200	4	2.5
85+	100	100	3	2.2
Total	4,700	5,100	436	9.4

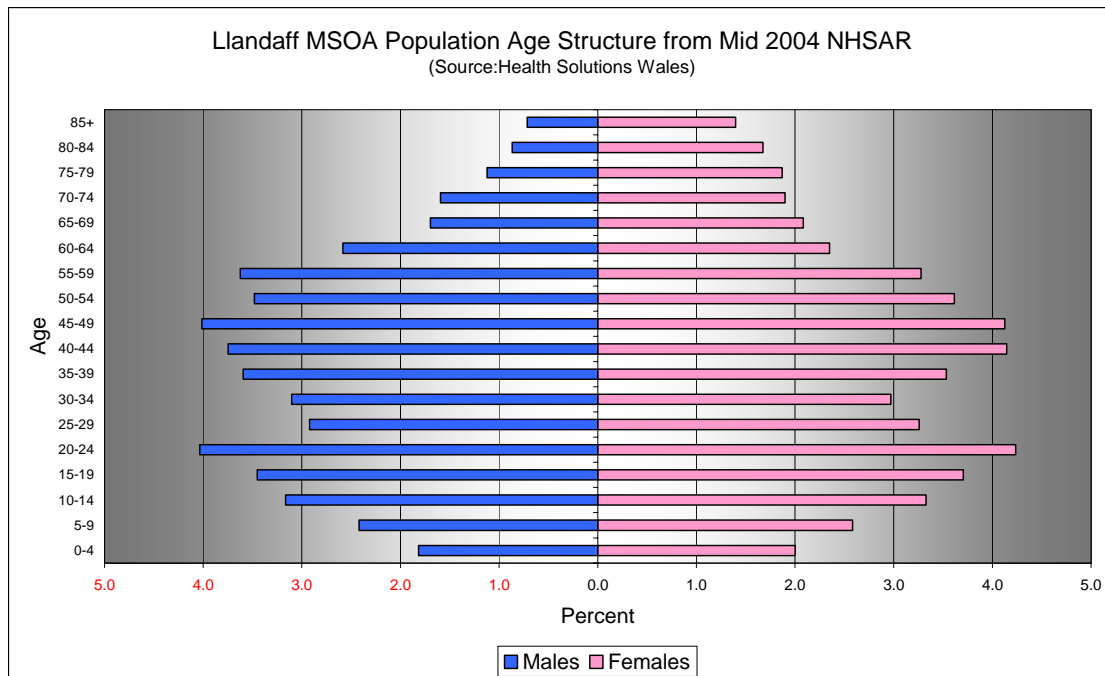
Quinary Population Age Structure - 2004 MYE



Llandaff MSOA Population Age Structure 2004 MYE (Source: ONS)			
Age	Males	Females	Persons
0-4	200	200	400
5-9	200	300	500
10-14	300	300	600
15-19	300	300	600
20-24	200	200	400
25-29	200	300	500
30-34	300	300	500
35-39	300	300	600
40-44	300	400	700
45-49	300	400	700
50-54	300	400	700
55-59	300	300	700
60-64	200	200	500
65-69	200	200	400
70-74	100	200	300
75-79	100	200	300
80-84	100	200	200
85+	100	100	200
Total	4,200	4,700	8,800

Llandaff MSOA Population Age Structure 2004 MYE - Percentage of total Persons (Source: ONS)			
Age	Males	Females	Persons
0-4	2.2	2.2	4.4
5-9	2.7	2.9	5.7
10-14	3.3	3.7	7.0
15-19	3.6	3.4	7.0
20-24	2.5	2.5	5.0
25-29	2.4	2.9	5.3
30-34	3.1	3.1	6.2
35-39	3.5	3.5	7.0
40-44	3.7	4.4	8.1
45-49	3.8	4.3	8.1
50-54	3.4	4.0	7.4
55-59	3.9	3.6	7.5
60-64	2.6	2.8	5.3
65-69	1.8	2.2	4.0
70-74	1.6	2.0	3.6
75-79	1.3	2.0	3.3
80-84	0.8	1.8	2.6
85+	0.9	1.5	2.4
Total	47.2	52.8	100.0

Quinary Population Age Structure Mid 2004 NHSAR



Llandaff MSOA Population Age Structure - NHSAR Mid 2004 (Source: HSW)			
Age	Males	Females	Persons
0-4	200	200	400
5-9	200	300	500
10-14	300	300	600
15-19	300	400	700
20-24	400	400	800
25-29	300	300	600
30-34	300	300	600
35-39	400	300	700
40-44	400	400	800
45-49	400	400	800
50-54	300	400	700
55-59	400	300	700
60-64	300	200	500
65-69	200	200	400
70-74	200	200	300
75-79	100	200	300
80-84	100	200	200
85+	100	100	200
Total	4,700	5,100	9,800

Llandaff MSOA Population Age Structure % of Total Persons - NHSAR Mid 2004 (Source: HSW)			
Age	Males	Females	Persons
0-4	1.8	2.0	3.8
5-9	2.4	2.6	5.0
10-14	3.2	3.3	6.5
15-19	3.5	3.7	7.2
20-24	4.0	4.2	8.3
25-29	2.9	3.3	6.2
30-34	3.1	3.0	6.1
35-39	3.6	3.5	7.1
40-44	3.7	4.1	7.9
45-49	4.0	4.1	8.1
50-54	3.5	3.6	7.1
55-59	3.6	3.3	6.9
60-64	2.6	2.3	4.9
65-69	1.7	2.1	3.8
70-74	1.6	1.9	3.5
75-79	1.1	1.9	3.0
80-84	0.9	1.7	2.5
85+	0.7	1.4	2.1
Total	47.9	52.1	100.0