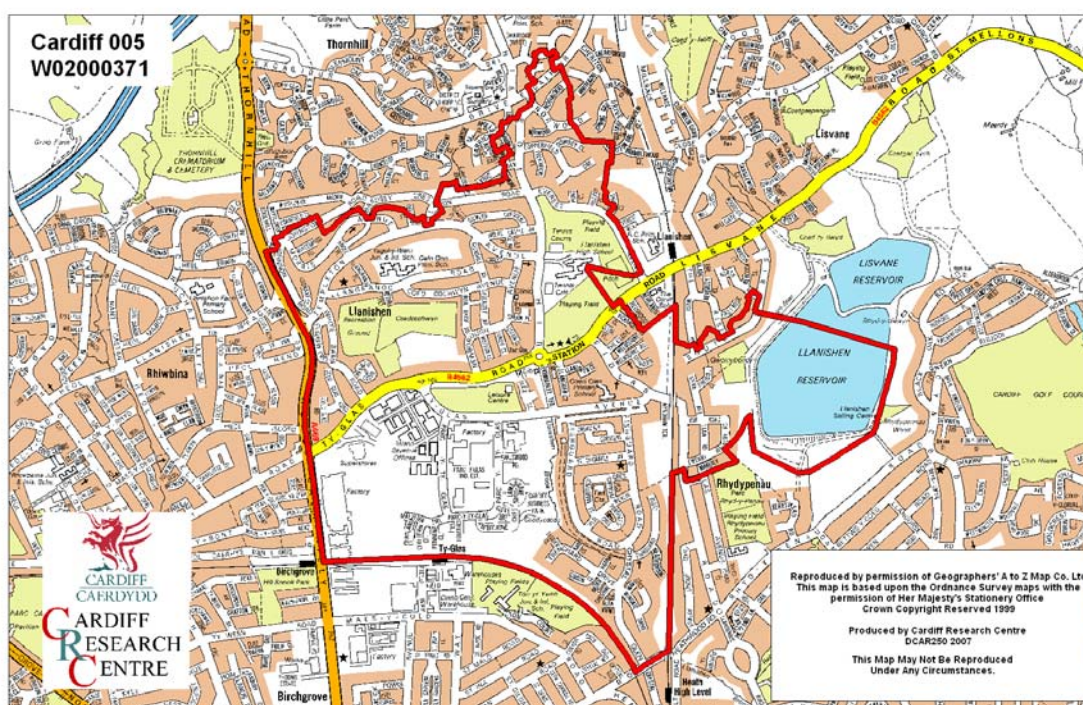


Llanishen Middle Super Output Area

A comparison of Population Age Structure's for Mid 2004 from the National Statistics experimental Mid Year Estimate and the National Health Service Administrative Records (NHSAR)

Figure: Llanishen MSOA (Cardiff North Locality)



Disclosure Control: Due to a requirement to observe the Registrar General's disclosure control protocols for experimental and official Mid Year Estimates of population it has been necessary to round population figures provided in this profile to the nearest 100 persons. Due to the danger of disclosure by difference the NHSAR population figures in this brief have also been rounded to the nearest 100 persons. For both datasets, when the population estimate was less than 50 persons, the value of 50 has been used. However, it is important to note that all graphics and the percentages presented in this profile have been produced using raw un-rounded estimates. The difference between NHSAR and MYE population estimates are also presented here in their un-rounded raw format.

Summary Key Statistics

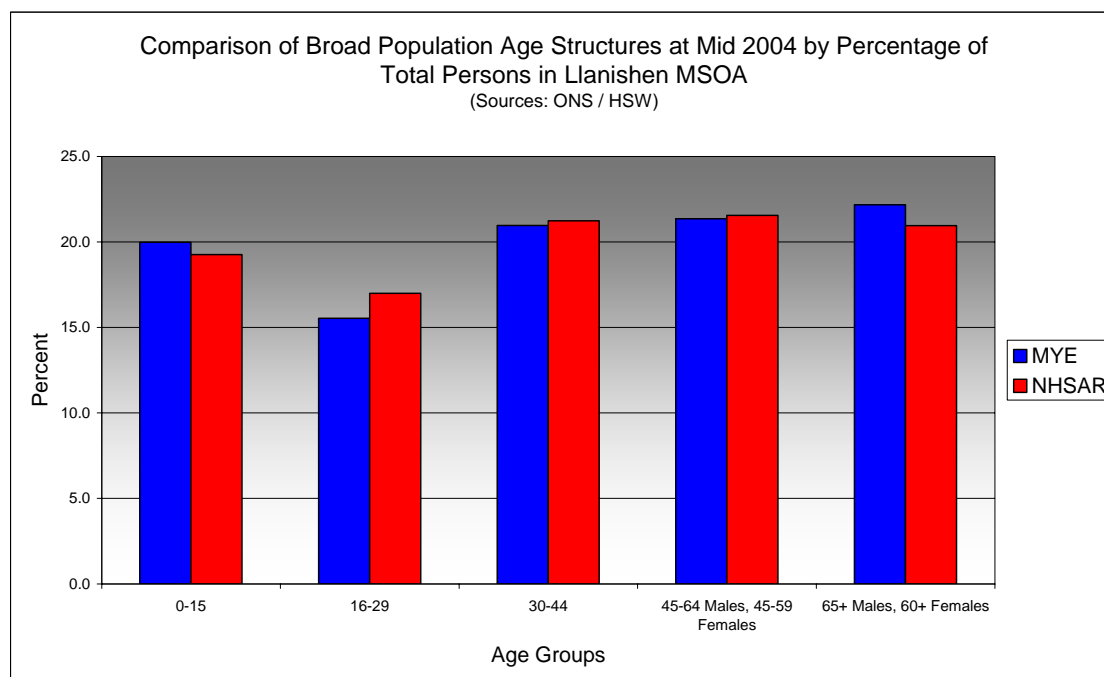
- In Llanishen total NHSAR population at Mid 2004 was 6.7% (approximately 500 persons) higher than the experimental Mid Year Estimate.
- Total male NHSAR population was 7.8% higher, while total female population was 5.7% higher than the experimental Mid Year Estimate.
- NHSAR population counts showed the greatest variance from the Experimental MYEs in the following age groups: 20 to 24 years 35.5% higher and those aged 25 to 29 years 29.4% higher.
- Llanishen is ranked 10th (MYE) and 11th (NHSAR) out of 47 MSOAs in Cardiff for it's total dependency ratio.
- Within the Cardiff North Locality Llanishen is ranked 4th (MYE & NHSAR) out of 12 MSOAs for it's total dependency ratio.
- Llanishen is ranked 15th (MYE) and 16th (NHSAR) out of 47 MSOAs in Cardiff for the total number of younger dependents aged 0 to 14.
- Within it's locality Llanishen is ranked 4th (MYE) and 3rd (NHSAR) out of 12 MSOAs for the total number of younger dependents aged 0 to 14.
- Llanishen is ranked 3rd (MYE & NHSAR) out of 47 MSOAs for the total number of older dependents aged 65 plus.
- Within it's locality Llanishen is ranked 3rd (MYE & NHSAR) out of 12 MSOAs for the total number of older dependents aged 65 plus.
- A small majority of dependent age groups (0 to 14 + 65 and over) are older dependents aged 65 and over, representing 52.3% (MYE) and 51.9% (NHSAR) of total dependents.

Dependency Ratios at Mid 2004 in Llanishen MSOA (Sources: Derived from Data Supplied by ONS & HSW)		
	MYE	NHSAR
Dependents Aged 0 - 14	1,300	1,400
Dependents Aged 65 Plus	1,500	1,500
Total Dependents	2,800	2,900
Persons Aged 15 to 64	4,600	5,100
Total Persons	7,400	7,900
Llanishen Dependency Ratio	0.61	0.57
Locality Dependency Ratio	0.52	0.48
Cardiff Dependency Ratio	0.47	0.43
Wales Dependency Ratio	0.57	0.52

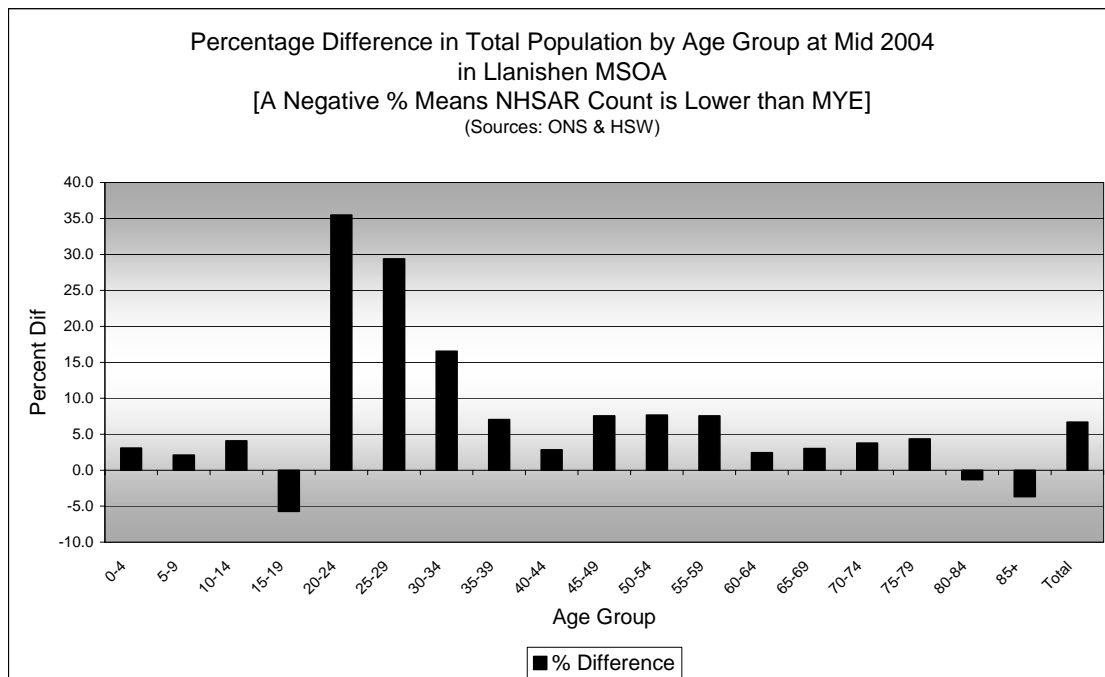
Broad Age Group Comparisons

Comparison of Population Sources by Broad Age Group for Mid 2004 in Llanishen MSOA						
	0-15	16-29	30-44	45-64 Males, 45-59 Females	65+ Males, 60+ Females	All Ages
MYE	1,500	1,200	1,600	1,600	1,600	7,400
NHSAR	1,500	1,300	1,700	1,700	1,700	7,900
Difference #	43	193	125	123	14	498
Difference %	2.9	16.7	8.0	7.7	0.8	6.7

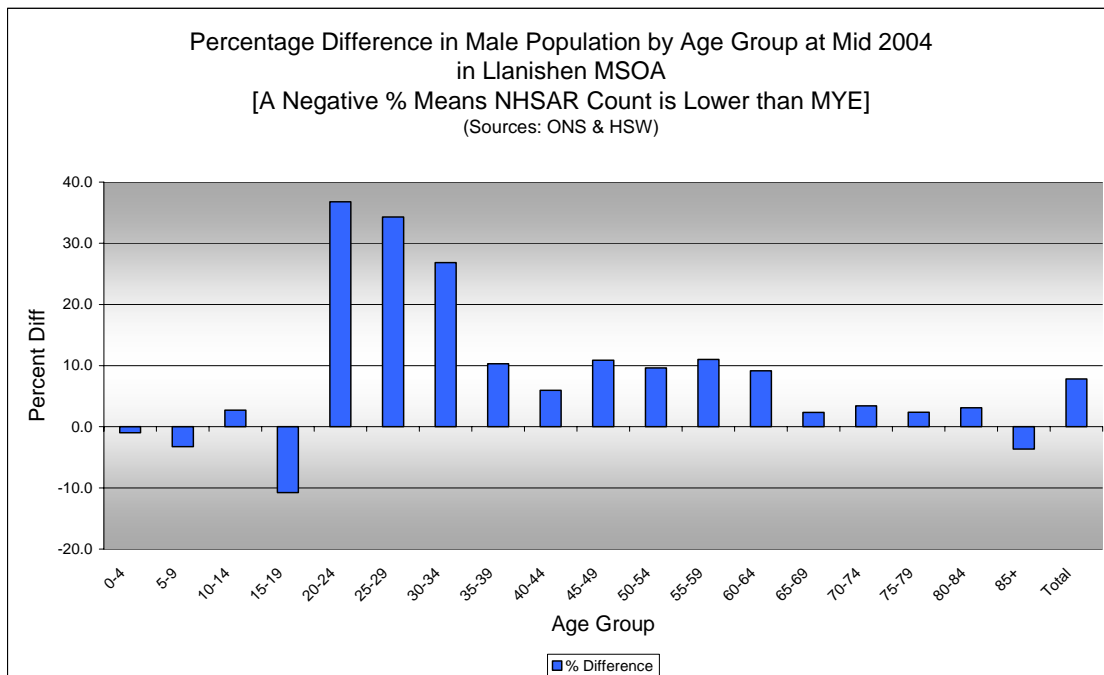
Comparison of Broad Population Age Structures for Mid 2004 by Percentage of Total Population in Llanishen MSOA						
	0-15	16-29	30-44	45-64 Males, 45-59 Females	65+ Males, 60+ Females	All Ages
MYE	20.0	15.5	21.0	21.3	22.2	100.0
NHSAR	19.3	17.0	21.2	21.6	21.0	100.0



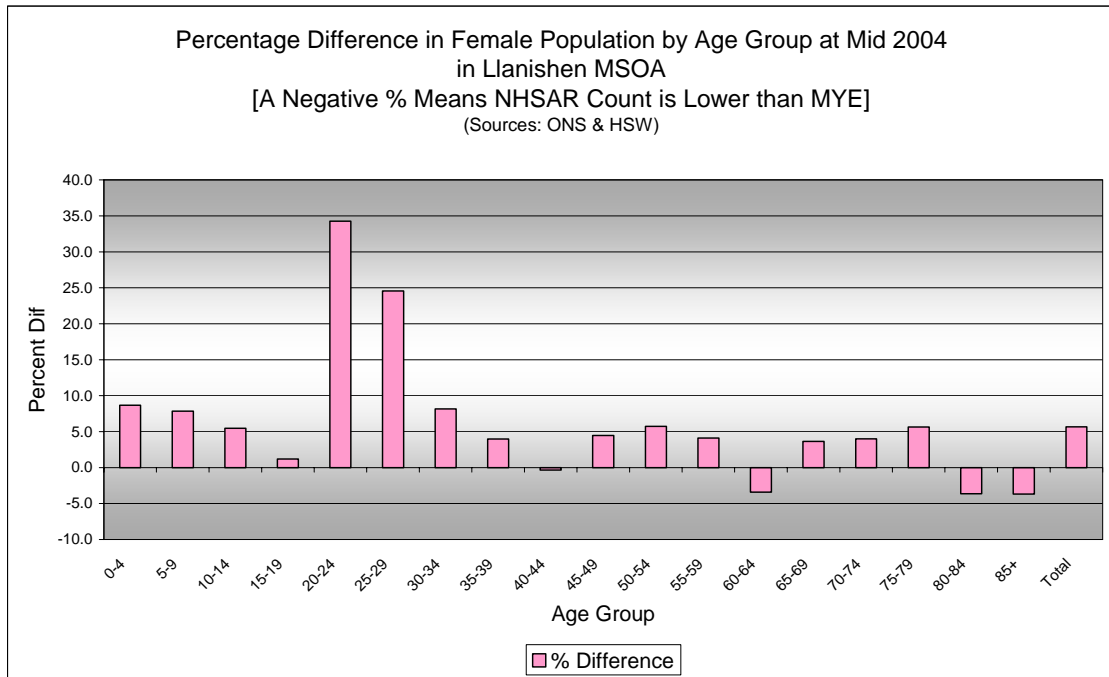
Quinary Age Group Comparisons – 2004 NHSAR Minus MYE



Comparison of Total Population by Age Group at Mid 2004 in Llanishen MSOA [Difference = NHSAR Minus MYE] (Sources: ONS & HSW)				
Age	Persons (MYE)	Persons (NHSAR)	# Difference	% Difference
0-4	400	400	11	3.1
5-9	500	500	10	2.1
10-14	500	500	21	4.1
15-19	600	600	-34	-5.7
20-24	400	500	126	35.5
25-29	300	400	102	29.4
30-34	400	500	70	16.5
35-39	500	600	38	7.1
40-44	600	600	17	2.8
45-49	500	500	36	7.5
50-54	500	600	40	7.7
55-59	400	500	33	7.6
60-64	300	300	8	2.4
65-69	300	300	8	3.0
70-74	300	300	11	3.8
75-79	300	300	14	4.4
80-84	400	400	-5	-1.3
85+	200	200	-8	-3.7
Total	7,400	7,900	498	6.7

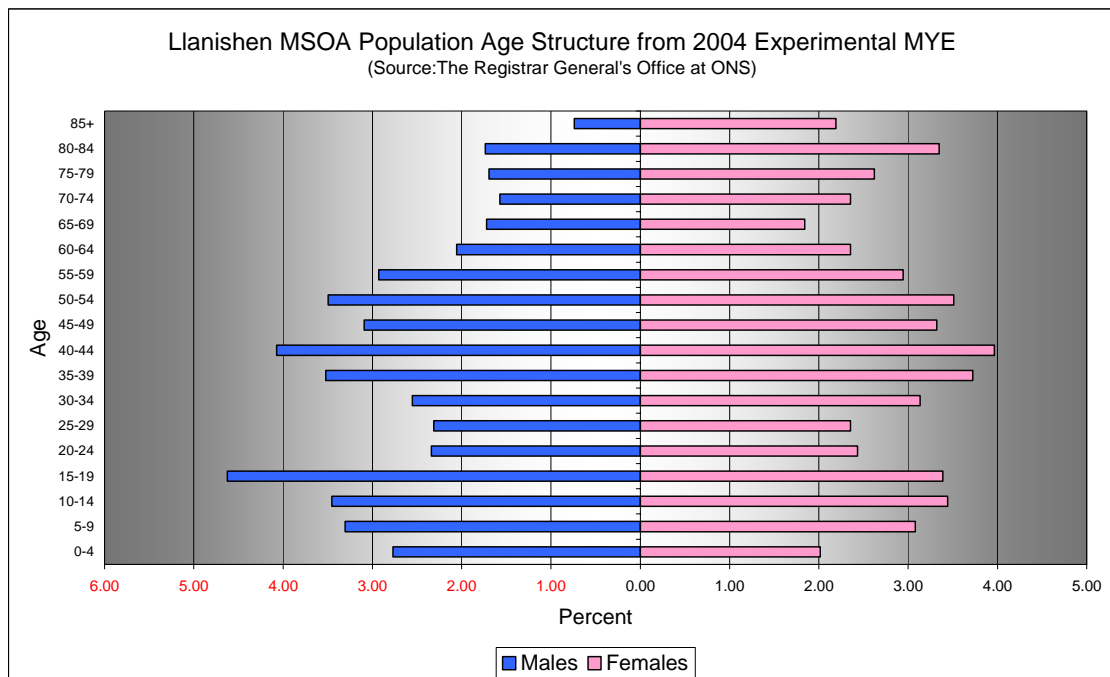


Comparison of Male Population by Age Group at Mid 2004 in Llanishen MSOA [Difference = NHSAR Minus MYE] (Sources: ONS & HSW)				
Age	Males (MYE)	Males (NHSAR)	# Difference	% Difference
0-4	200	200	-2	-1.0
5-9	200	200	-8	-3.3
10-14	300	300	7	2.7
15-19	300	300	-37	-10.8
20-24	200	200	64	36.8
25-29	200	200	59	34.3
30-34	200	200	51	26.8
35-39	300	300	27	10.3
40-44	300	300	18	5.9
45-49	200	300	25	10.9
50-54	300	300	25	9.6
55-59	200	200	24	11.0
60-64	200	200	14	9.2
65-69	100	100	3	2.3
70-74	100	100	4	3.4
75-79	100	100	3	2.4
80-84	100	100	4	3.1
85+	100	100	-2	-3.6
Total	3,600	3,800	279	7.8



Comparison of Female Population by Age Group at Mid 2004 in Llanishen MSOA [Difference = NHSAR Minus MYE] (Sources: ONS & HSW)				
Age	Females (MYE)	Females (NHSAR)	# Difference	% Difference
0-4	200	200	13	8.7
5-9	200	200	18	7.9
10-14	300	300	14	5.5
15-19	300	300	3	1.2
20-24	200	200	62	34.3
25-29	200	200	43	24.6
30-34	200	300	19	8.2
35-39	300	300	11	4.0
40-44	300	300	-1	-0.3
45-49	200	300	11	4.5
50-54	300	300	15	5.7
55-59	200	200	9	4.1
60-64	200	200	-6	-3.4
65-69	100	100	5	3.6
70-74	200	200	7	4.0
75-79	200	200	11	5.6
80-84	200	200	-9	-3.6
85+	200	200	-6	-3.7
Total	3,900	4,100	219	5.7

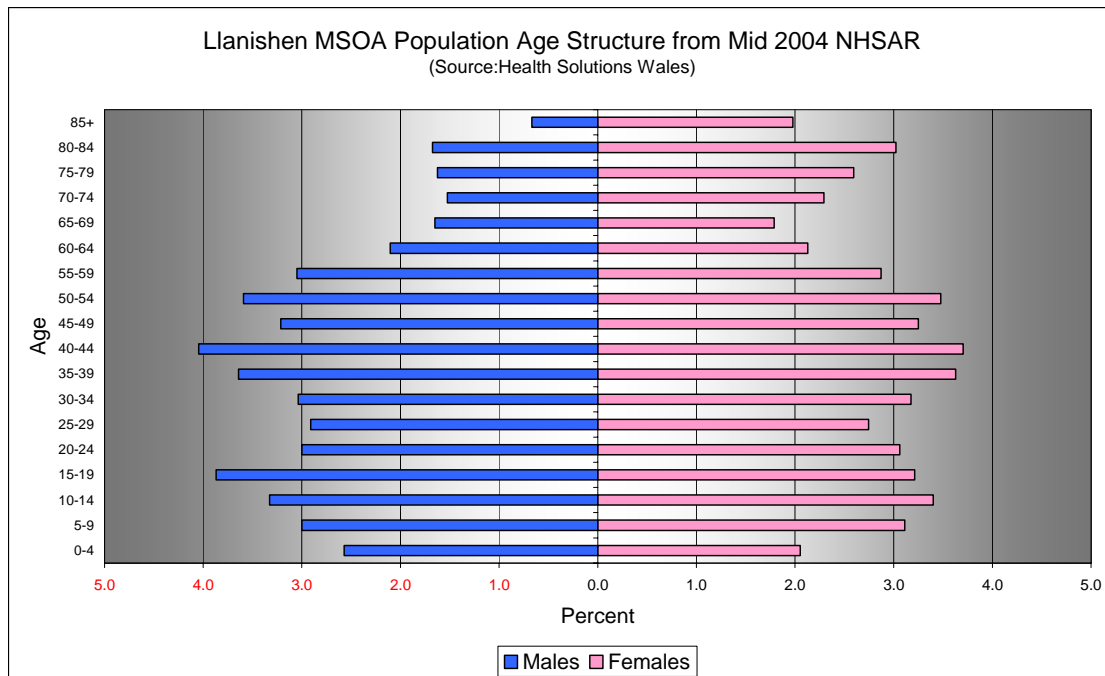
Quinary Population Age Structure - 2004 MYE



Llanishen MSOA Population Age Structure 2004 MYE (Source: ONS)			
Age	Males	Females	Persons
0-4	200	200	400
5-9	200	200	500
10-14	300	300	500
15-19	300	300	600
20-24	200	200	400
25-29	200	200	300
30-34	200	200	400
35-39	300	300	500
40-44	300	300	600
45-49	200	200	500
50-54	300	300	500
55-59	200	200	400
60-64	200	200	300
65-69	100	100	300
70-74	100	200	300
75-79	100	200	300
80-84	100	200	400
85+	100	200	200
Total	3,600	3,900	7,400

Llanishen MSOA Population Age Structure 2004 MYE - Percentage of total Persons (Source: ONS)			
Age	Males	Females	Persons
0-4	2.8	2.0	4.8
5-9	3.3	3.1	6.4
10-14	3.5	3.4	6.9
15-19	4.6	3.4	8.0
20-24	2.3	2.4	4.8
25-29	2.3	2.4	4.7
30-34	2.6	3.1	5.7
35-39	3.5	3.7	7.2
40-44	4.1	4.0	8.0
45-49	3.1	3.3	6.4
50-54	3.5	3.5	7.0
55-59	2.9	2.9	5.9
60-64	2.1	2.4	4.4
65-69	1.7	1.8	3.6
70-74	1.6	2.4	3.9
75-79	1.7	2.6	4.3
80-84	1.7	3.3	5.1
85+	0.7	2.2	2.9
Total	48.0	52.0	100.0

Quinary Population Age Structure Mid 2004 NHSAR



Llanishen MSOA Population Age Structure - NHSAR Mid 2004 (Source: HSW)			
Age	Males	Females	Persons
0-4	200	200	400
5-9	200	200	500
10-14	300	300	500
15-19	300	300	600
20-24	200	200	500
25-29	200	200	400
30-34	200	300	500
35-39	300	300	600
40-44	300	300	600
45-49	300	300	500
50-54	300	300	600
55-59	200	200	500
60-64	200	200	300
65-69	100	100	300
70-74	100	200	300
75-79	100	200	300
80-84	100	200	400
85+	100	200	200
Total	3,800	4,100	7,900

Llanishen MSOA Population Age Structure % of Total Persons - NHSAR Mid 2004 (Source: HSW)			
Age	Males	Females	Persons
0-4	2.6	2.1	4.6
5-9	3.0	3.1	6.1
10-14	3.3	3.4	6.7
15-19	3.9	3.2	7.1
20-24	3.0	3.1	6.1
25-29	2.9	2.7	5.7
30-34	3.0	3.2	6.2
35-39	3.6	3.6	7.3
40-44	4.0	3.7	7.7
45-49	3.2	3.3	6.5
50-54	3.6	3.5	7.1
55-59	3.0	2.9	5.9
60-64	2.1	2.1	4.2
65-69	1.7	1.8	3.4
70-74	1.5	2.3	3.8
75-79	1.6	2.6	4.2
80-84	1.7	3.0	4.7
85+	0.7	2.0	2.6
Total	48.5	51.5	100.0