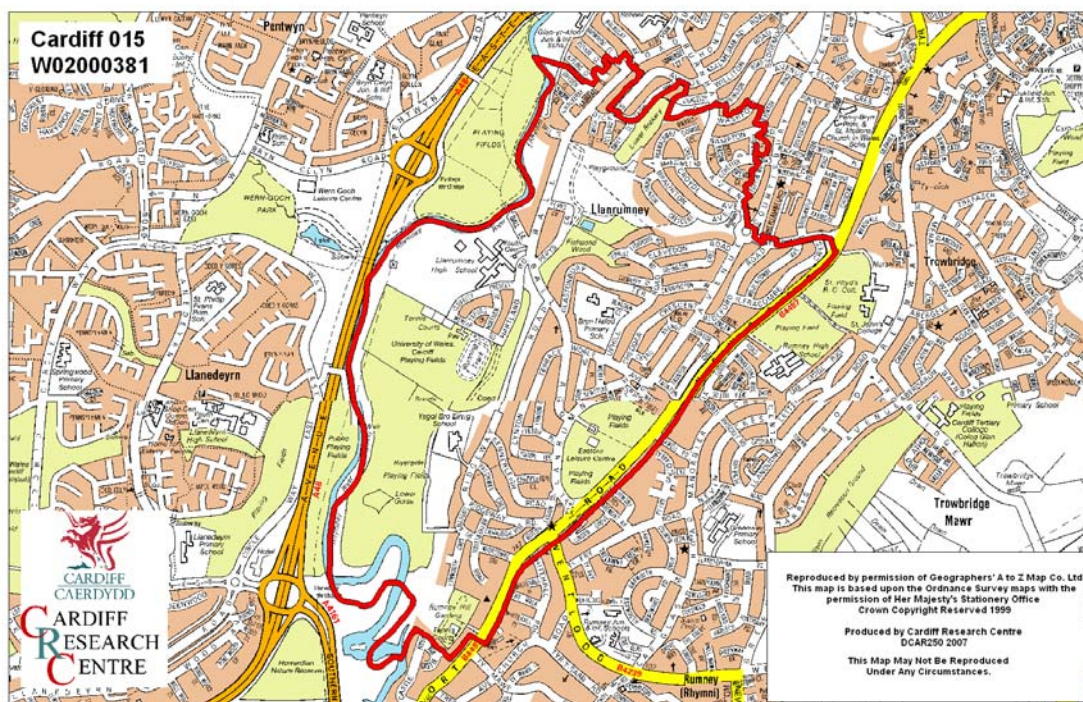


# South Llanrumney Middle Super Output Area

A comparison of Population Age Structure's for Mid 2004 from the National Statistics experimental Mid Year Estimate and the National Health Service Administrative Records (NHSAR)

Figure: South Llanrumney MSOA (Cardiff Central Locality)



**Disclosure Control:** Due to a requirement to observe the Registrar General's disclosure control protocols for experimental and official Mid Year Estimates of population it has been necessary to round population figures provided in this profile to the nearest 100 persons. Due to the danger of disclosure by difference the NHSAR population figures in this brief have also been rounded to the nearest 100 persons. For both datasets, when the population estimate was less than 50 persons, the value of 50 has been used. However, it is important to note that all graphics and the percentages presented in this profile have been produced using raw un-rounded estimates. The difference between NHSAR and MYE population estimates are also presented here in their un-rounded raw format.

## Summary Key Statistics

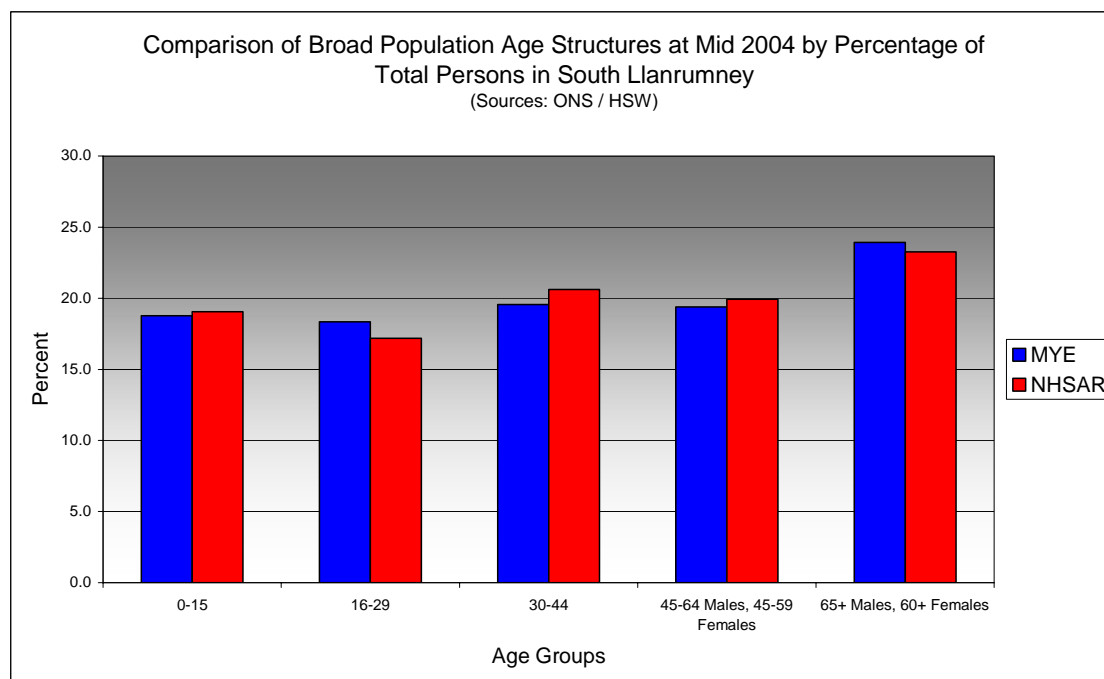
- In South Llanrumney total NHSAR population at Mid 2004 was 6.5% (approximately 400 persons) higher than the experimental Mid Year Estimate.
- Total male NHSAR population was 11.4% higher, while total female population was 2.0% higher than the experimental Mid Year Estimate.
- NHSAR population counts showed the greatest variance from the Experimental MYEs in the following age groups: 35 to 39 years 17.8% higher and those aged 45 to 49 years 17.4% higher.
- South Llanrumney is ranked 7<sup>th</sup> (MYE) and 2<sup>nd</sup> (NHSAR) out of 47 MSOAs in Cardiff for it's total dependency ratio.
- Within the Cardiff South East Locality South Llanrumney is ranked 2<sup>nd</sup> (MYE) and 1<sup>st</sup> (NHSAR) out of 11 MSOAs for it's total dependency ratio.
- South Llanrumney is ranked 31<sup>st</sup> (MYE) and 29<sup>th</sup> (NHSAR) out of 47 MSOAs in Cardiff for the total number of younger dependents aged 0 to 14.
- Within its locality South Llanrumney is ranked 10<sup>th</sup> (MYE & NHSAR) out of 11 MSOAs for the total number of younger dependents aged 0 to 14 in the locality.
- South Llanrumney is ranked 8<sup>th</sup> (MYE & NHSAR) out of 47 MSOAs for the total number of older dependents aged 65 plus.
- Within it's locality South Llanrumney is ranked 2<sup>nd</sup> (MYE & NHSAR) out of 11 MSOAs for the total number of older dependents aged 65 plus.
- The majority of dependent age groups (0 to 14 + 65 and over) are older dependents aged 65 and over, representing 55.4% (MYE) and 54.3% (NHSAR) of total dependents.

<b>Dependency Ratios at Mid 2004 in South Llanrumney MSOA</b> (Sources: Derived from Data Supplied by ONS & HSW)		
	<b>MYE</b>	<b>NHSAR</b>
<b>Dependents Aged 0 - 14</b>	1,100	1,200
<b>Dependents Aged 65 Plus</b>	1,300	1,400
<b>Total Dependents</b>	2,400	2,500
<b>Persons Aged 15 to 64</b>	3,800	4,100
<b>Total Persons</b>	6,200	6,600
<b>South Llanrumney Dependency Ratio</b>	0.63	0.62
<b>Locality Dependency Ratio</b>	0.52	0.51
<b>Cardiff Dependency Ratio</b>	0.47	0.43
<b>Wales Dependency Ratio</b>	0.57	0.52

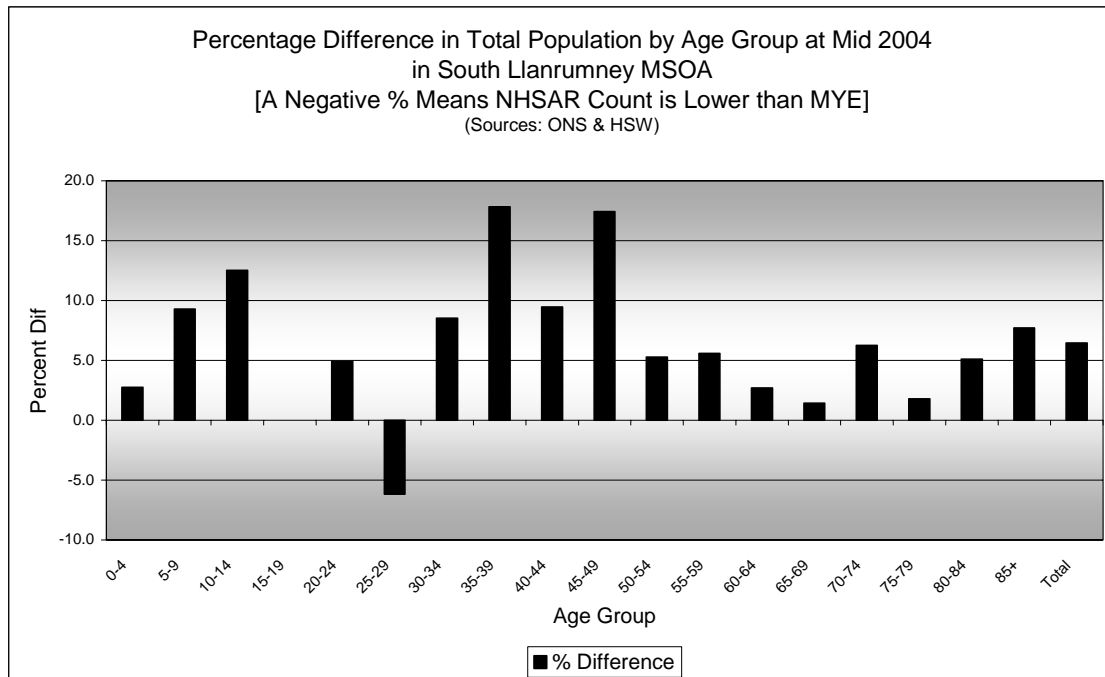
## Broad Age Group Comparisons

Comparison of Population Sources by Broad Age Group for Mid 2004 in South Llanrumney MSOA						
	0-15	16-29	30-44	45-64 Males, 45-59 Females	65+ Males, 60+ Females	All Ages
<b>MYE</b>	1,200	1,100	1,200	1,200	1,500	6,200
<b>NHSAR</b>	1,300	1,100	1,400	1,300	1,500	6,600
<b>Difference #</b>	93	-4	147	112	51	399
<b>Difference %</b>	8.0	-0.4	12.1	9.3	3.4	6.5

Comparison of Broad Population Age Structures for Mid 2004 by Percentage of Total Population in South Llanrumney MSOA						
	0-15	16-29	30-44	45-64 Males, 45-59 Females	65+ Males, 60+ Females	All Ages
<b>MYE</b>	18.8	18.3	19.6	19.4	23.9	100.0
<b>NHSAR</b>	19.0	17.2	20.6	19.9	23.2	100.0

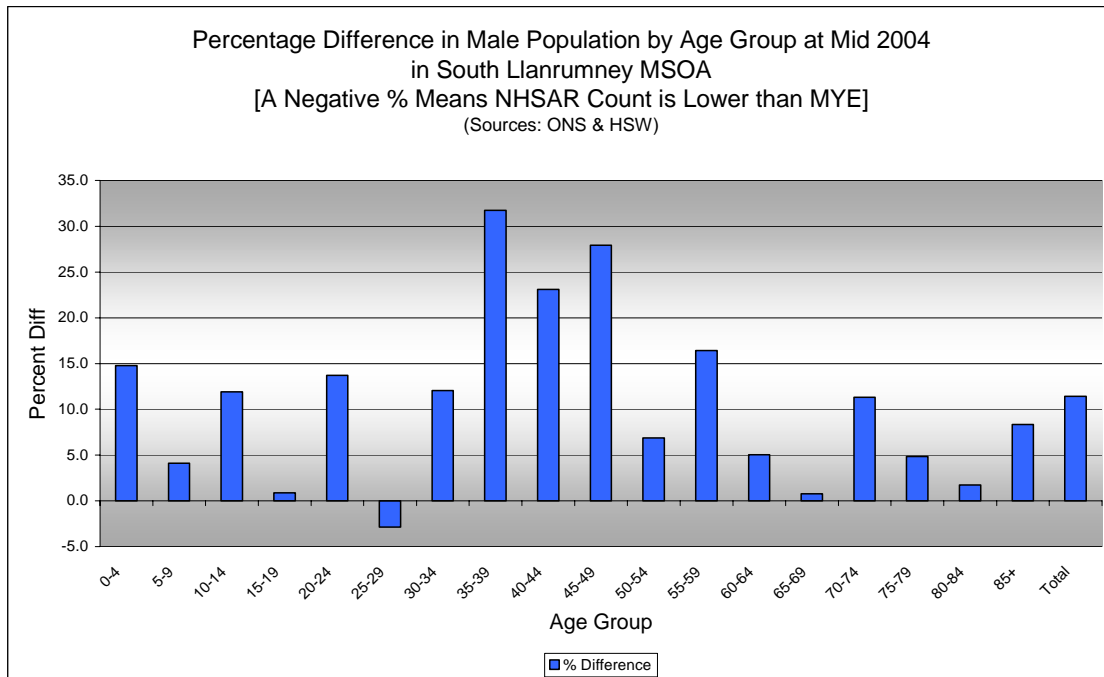


## Quinary Age Group Comparisons – 2004 NHSAR Minus MYE



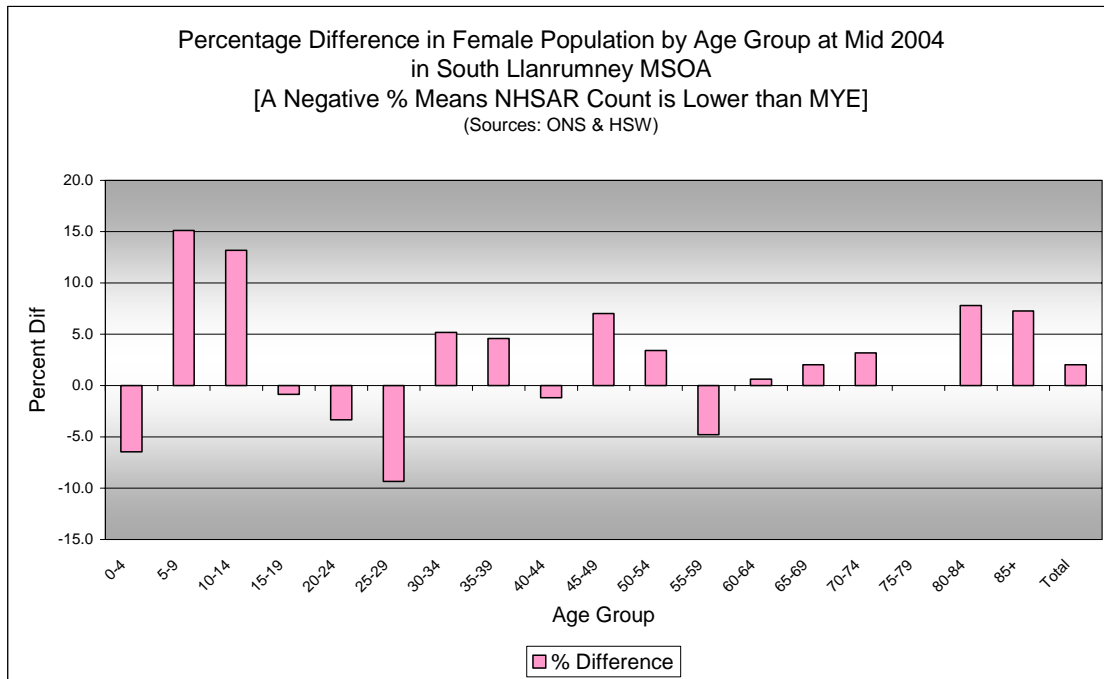
**Comparison of Total Population by Age Group at Mid 2004 in South Llanrumney MSOA**  
[Difference = NHSAR Minus MYE] (Sources: ONS & HSW)

Age	Persons (MYE)	Persons (NHSAR)	# Difference	% Difference
0-4	300	300	9	2.7
5-9	300	400	30	9.3
10-14	400	500	52	12.5
15-19	500	500	0	0.0
20-24	400	400	20	4.9
25-29	400	300	-22	-6.2
30-34	300	400	29	8.5
35-39	400	500	76	17.8
40-44	400	500	42	9.5
45-49	400	500	69	17.4
50-54	400	400	20	5.3
55-59	300	300	16	5.6
60-64	300	300	8	2.7
65-69	300	300	4	1.4
70-74	300	300	19	6.3
75-79	400	400	7	1.8
80-84	300	300	13	5.1
85+	100	100	7	7.7
<b>Total</b>	<b>6,200</b>	<b>6,600</b>	<b>399</b>	<b>6.5</b>



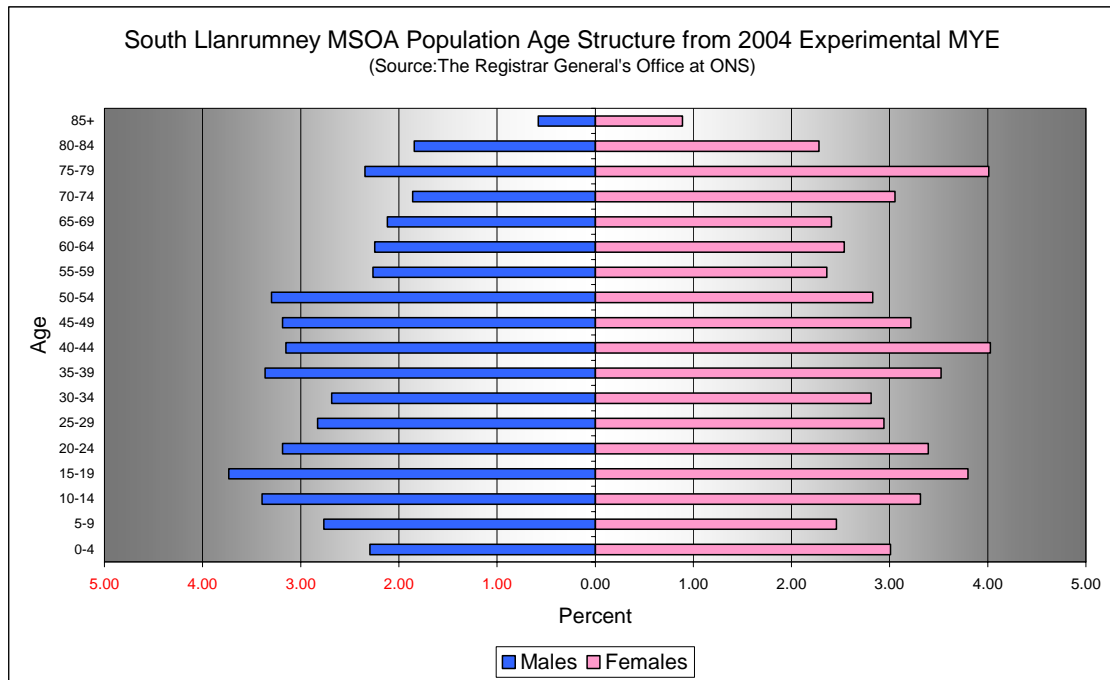
**Comparison of Male Population by Age Group at Mid 2004 in South Llanrumney MSOA**  
[Difference = NHSAR Minus MYE] (Sources: ONS & HSW)

Age	Males (MYE)	Males (NHSAR)	# Difference	% Difference
0-4	100	200	21	14.8
5-9	200	200	7	4.1
10-14	200	200	25	11.9
15-19	200	200	2	0.9
20-24	200	200	27	13.7
25-29	200	200	-5	-2.9
30-34	200	200	20	12.0
35-39	200	300	66	31.7
40-44	200	200	45	23.1
45-49	200	300	55	27.9
50-54	200	200	14	6.9
55-59	100	200	23	16.4
60-64	100	100	7	5.0
65-69	100	100	1	0.8
70-74	100	100	13	11.3
75-79	100	200	7	4.8
80-84	100	100	2	1.8
85+	50	50	3	8.3
<b>Total</b>	<b>2,900</b>	<b>3,200</b>	<b>333</b>	<b>11.4</b>



<b>Comparison of Female Population by Age Group at Mid 2004 in South Llanrumney MSOA</b> [Difference = NHSAR Minus MYE] (Sources: ONS & HSW)				
Age	Females (MYE)	Females (NHSAR)	# Difference	% Difference
0-4	200	200	-12	-6.5
5-9	200	200	23	15.1
10-14	200	200	27	13.2
15-19	200	200	-2	-0.9
20-24	200	200	-7	-3.3
25-29	200	200	-17	-9.3
30-34	200	200	9	5.2
35-39	200	200	10	4.6
40-44	200	200	-3	-1.2
45-49	200	200	14	7.0
50-54	200	200	6	3.4
55-59	100	100	-7	-4.8
60-64	200	200	1	0.6
65-69	100	200	3	2.0
70-74	200	200	6	3.2
75-79	200	200	0	0.0
80-84	100	200	11	7.8
85+	100	100	4	7.3
<b>Total</b>	<b>3,300</b>	<b>3,300</b>	<b>66</b>	<b>2.0</b>

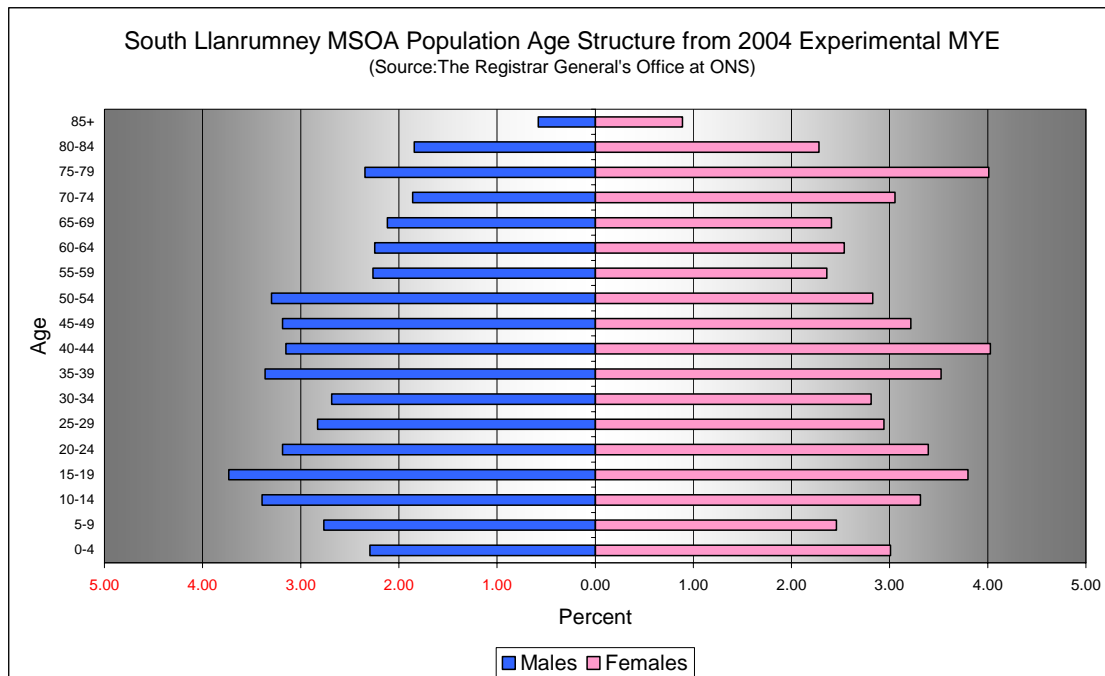
## Quinary Population Age Structure - 2004 MYE



South Llanrumney MSOA Population Age Structure 2004 MYE (Source: ONS)			
Age	Males	Females	Persons
0-4	100	200	300
5-9	200	200	300
10-14	200	200	400
15-19	200	200	500
20-24	200	200	400
25-29	200	200	400
30-34	200	200	300
35-39	200	200	400
40-44	200	200	400
45-49	200	200	400
50-54	200	200	400
55-59	100	100	300
60-64	100	200	300
65-69	100	100	300
70-74	100	200	300
75-79	100	200	400
80-84	100	100	300
85+	50	100	100
<b>Total</b>	<b>2,900</b>	<b>3,300</b>	<b>6,200</b>

South Llanrumney MSOA Population Age Structure 2004 MYE - Percentage of total Persons (Source: ONS)			
Age	Males	Females	Persons
0-4	2.3	3.0	5.3
5-9	2.8	2.5	5.2
10-14	3.4	3.3	6.7
15-19	3.7	3.8	7.5
20-24	3.2	3.4	6.6
25-29	2.8	2.9	5.8
30-34	2.7	2.8	5.5
35-39	3.4	3.5	6.9
40-44	3.2	4.0	7.2
45-49	3.2	3.2	6.4
50-54	3.3	2.8	6.1
55-59	2.3	2.4	4.6
60-64	2.2	2.5	4.8
65-69	2.1	2.4	4.5
70-74	1.9	3.1	4.9
75-79	2.3	4.0	6.4
80-84	1.8	2.3	4.1
85+	0.6	0.9	1.5
<b>Total</b>	<b>47.1</b>	<b>52.9</b>	<b>100.0</b>

## Quinary Population Age Structure Mid 2004 NHSAR



South Llanrumney MSOA Population Age Structure 2004 MYE (Source: ONS)			
Age	Males	Females	Persons
0-4	200	200	300
5-9	200	200	400
10-14	200	200	500
15-19	200	200	500
20-24	200	200	400
25-29	200	200	300
30-34	200	200	400
35-39	300	200	500
40-44	200	200	500
45-49	300	200	500
50-54	200	200	400
55-59	200	100	300
60-64	100	200	300
65-69	100	200	300
70-74	100	200	300
75-79	200	200	400
80-84	100	200	300
85+	50	100	100
<b>Total</b>	<b>3,200</b>	<b>3,300</b>	<b>6,600</b>

South Llanrumney MSOA Population Age Structure 2004 MYE - Percentage of total Persons (Source: ONS)			
Age	Males	Females	Persons
0-4	2.3	3.0	5.3
5-9	2.8	2.5	5.2
10-14	3.4	3.3	6.7
15-19	3.7	3.8	7.5
20-24	3.2	3.4	6.6
25-29	2.8	2.9	5.8
30-34	2.7	2.8	5.5
35-39	3.4	3.5	6.9
40-44	3.2	4.0	7.2
45-49	3.2	3.2	6.4
50-54	3.3	2.8	6.1
55-59	2.3	2.4	4.6
60-64	2.2	2.5	4.8
65-69	2.1	2.4	4.5
70-74	1.9	3.1	4.9
75-79	2.3	4.0	6.4
80-84	1.8	2.3	4.1
85+	0.6	0.9	1.5
<b>Total</b>	<b>47.1</b>	<b>52.9</b>	<b>100.0</b>