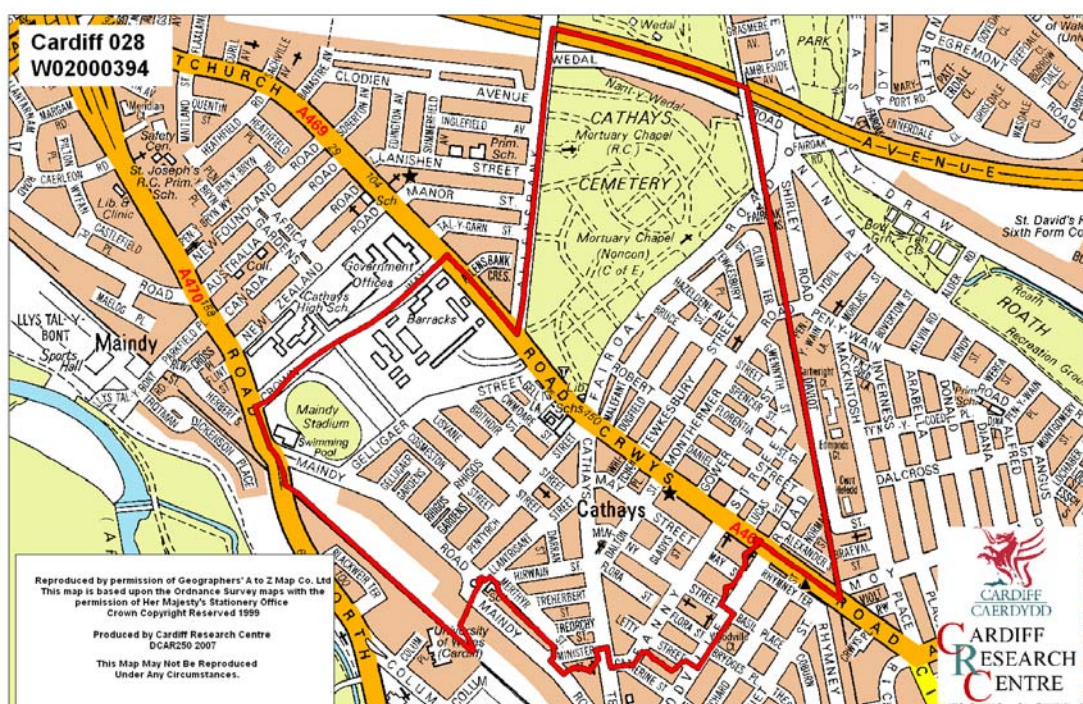


Maindy Middle Super Output Area

A comparison of Population Age Structure's for Mid 2004 from the National Statistics experimental Mid Year Estimate and the National Health Service Administrative Records (NHSAR)

Figure: Maindy MSOA (Cardiff Central Locality)



Disclosure Control: Due to a requirement to observe the Registrar General's disclosure control protocols for experimental and official Mid Year Estimates of population it has been necessary to round population figures provided in this profile to the nearest 100 persons. Due to the danger of disclosure by difference the NHSAR population figures in this brief have also been rounded to the nearest 100 persons. For both datasets, when the population estimate was less than 50 persons, the value of 50 has been used. However, it is important to note that all graphics and the percentages presented in this profile have been produced using raw un-rounded estimates. The difference between NHSAR and MYE population estimates are also presented here in their un-rounded raw format.

Summary Key Statistics

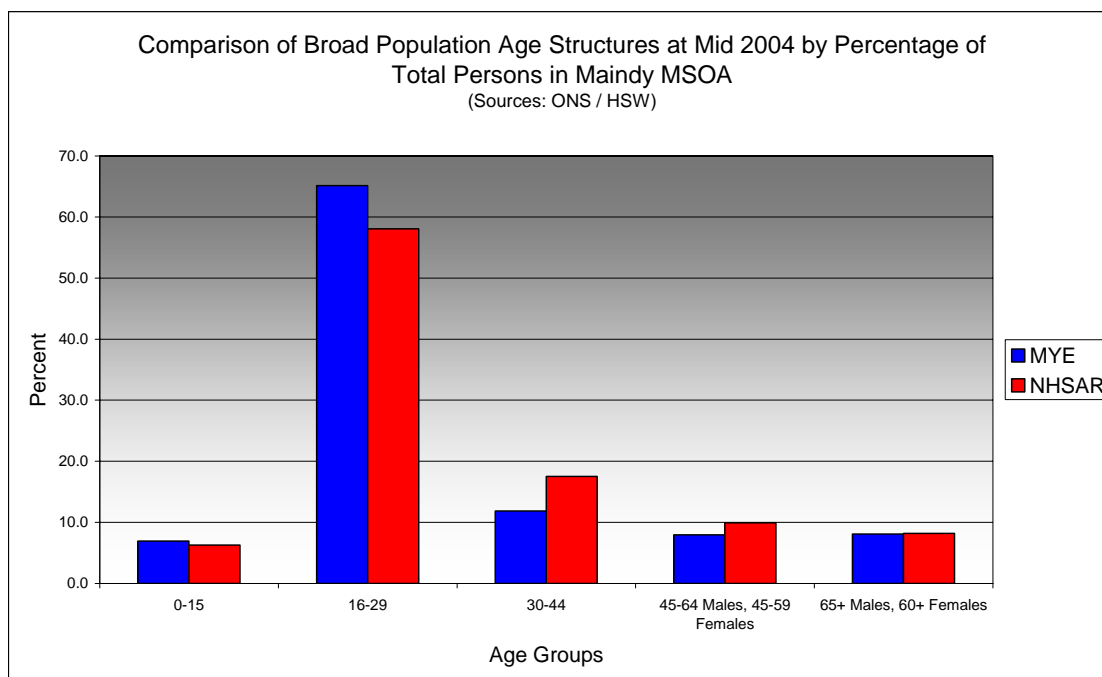
- In Maindy total NHSAR population at Mid 2004 was 16.3% (approximately 1,250 persons) higher than the experimental Mid Year Estimate.
- Total male NHSAR population was 14.0% higher, while total female population was 18.4% higher than the experimental Mid Year Estimate.
- NHSAR population counts showed the greatest variance from the Experimental MYEs in the following age groups: 25 to 29 years 84.9% higher and those aged 35 to 39 years 74.8% higher. In the 20 to 24 age group the NHSAR is 12.2% lower than the experimental MYE, a difference of approximately 450 persons.
- Maindy is ranked 46th (MYE & NHSAR) out of 47 MSOAs in Cardiff for it's total dependency ratio.
- Within the Cardiff Central Locality Maindy is ranked 10th (MYE & NHSAR) out of 11 MSOAs for it's total dependency ratio.
- Maindy is ranked 46th (MYE & NHSAR) out of 47 MSOAs in Cardiff for the total number of younger dependents aged 0 to 14.
- Within it's locality Maindy is ranked 10th (MYE & NHSAR) out of 11 MSOAs for the total number of younger dependents aged 0 to 14.
- Maindy is ranked 41st (MYE) and 39th (NHSAR) out of 47 MSOAs for the total number of older dependents aged 65 plus.
- Within it's locality Maindy is ranked 8th (MYE & NHSAR) out of 11 MSOAs for the total number of older dependents aged 65 plus.
- The majority of dependent age groups (0 to 14 + 65 and over) are older dependents aged 65 and over, representing 54.2% (MYE) and 56.8% (NHSAR) of total dependents.

Dependency Ratios at Mid 2004 in Maindy MSOA (Sources: Derived from Data Supplied by ONS & HSW)		
	MYE	NHSAR
Dependents Aged 0 - 14	500	500
Dependents Aged 65 Plus	600	700
Total Dependents	1,000	1,200
Persons Aged 15 to 64	6,600	7,700
Total Persons	7,600	8,900
Maindy Dependency Ratio	0.15	0.15
Locality Dependency Ratio	0.33	0.30
Cardiff Dependency Ratio	0.47	0.43
Wales Dependency Ratio	0.57	0.52

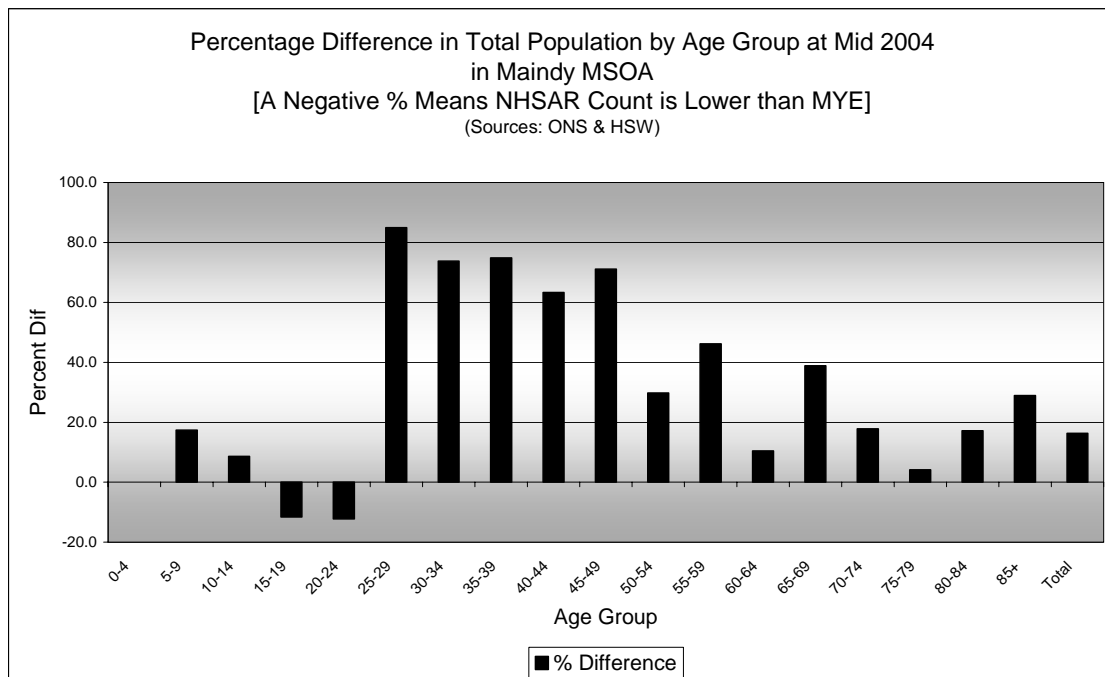
Broad Age Group Comparisons

Comparison of Population Sources by Broad Age Group for Mid 2004 in Maindy MSOA						
	0-15	16-29	30-44	45-64 Males, 45-59 Females	65+ Males, 60+ Females	All Ages
MYE	500	5,000	900	600	600	7,600
NHSAR	600	5,200	1,600	900	700	8,900
Difference #	26	184	648	272	112	1,242
Difference %	4.9	3.7	71.5	44.7	18.2	16.3

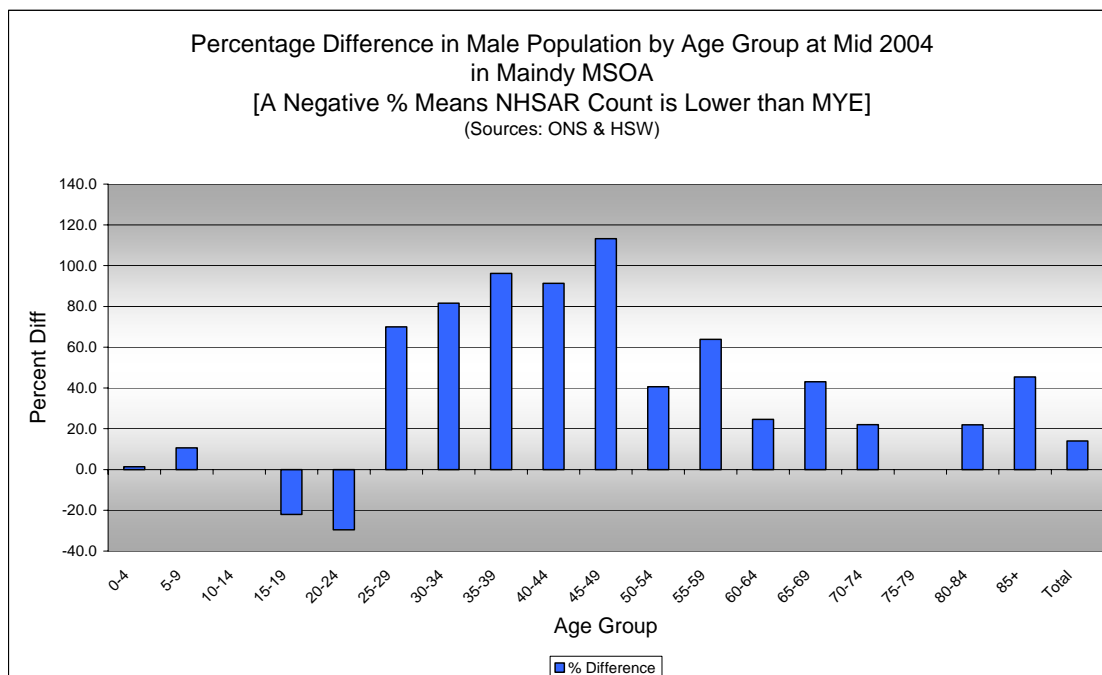
Comparison of Broad Population Age Structures for Mid 2004 by Percentage of Total Population in Maindy MSOA						
Maindy	0-15	16-29	30-44	45-64 Males, 45-59 Females	65+ Males, 60+ Females	All Ages
MYE	6.9	65.1	11.9	8.0	8.1	100.0
NHSAR	6.3	58.1	17.5	9.9	8.2	100.0



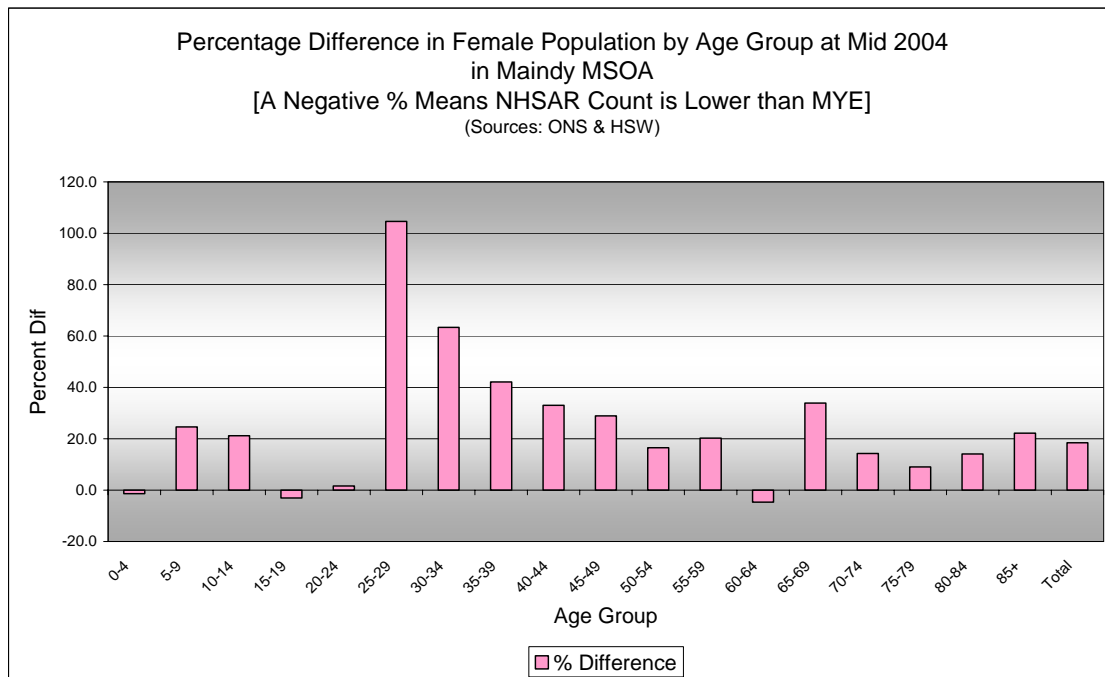
Quinary Age Group Comparisons – 2004 NHSAR Minus MYE



Comparison of Total Population by Age Group at Mid 2004 in Maindy MSOA [Difference = NHSAR Minus MYE] (Sources: ONS & HSW)				
Age	Persons (MYE)	Persons (NHSAR)	# Difference	% Difference
0-4	100	100	0	0.0
5-9	200	200	28	17.4
10-14	200	200	14	8.6
15-19	500	500	-62	-11.6
20-24	3,700	3,200	-452	-12.2
25-29	800	1,500	682	84.9
30-34	400	700	315	73.8
35-39	300	500	193	74.8
40-44	200	400	140	63.3
45-49	200	300	118	71.1
50-54	200	300	64	29.8
55-59	200	200	73	46.2
60-64	100	100	14	10.4
65-69	100	200	47	38.8
70-74	100	200	23	17.8
75-79	100	100	5	4.1
80-84	100	100	18	17.1
85+	100	100	22	28.9
Total	7,600	8,900	1,242	16.3

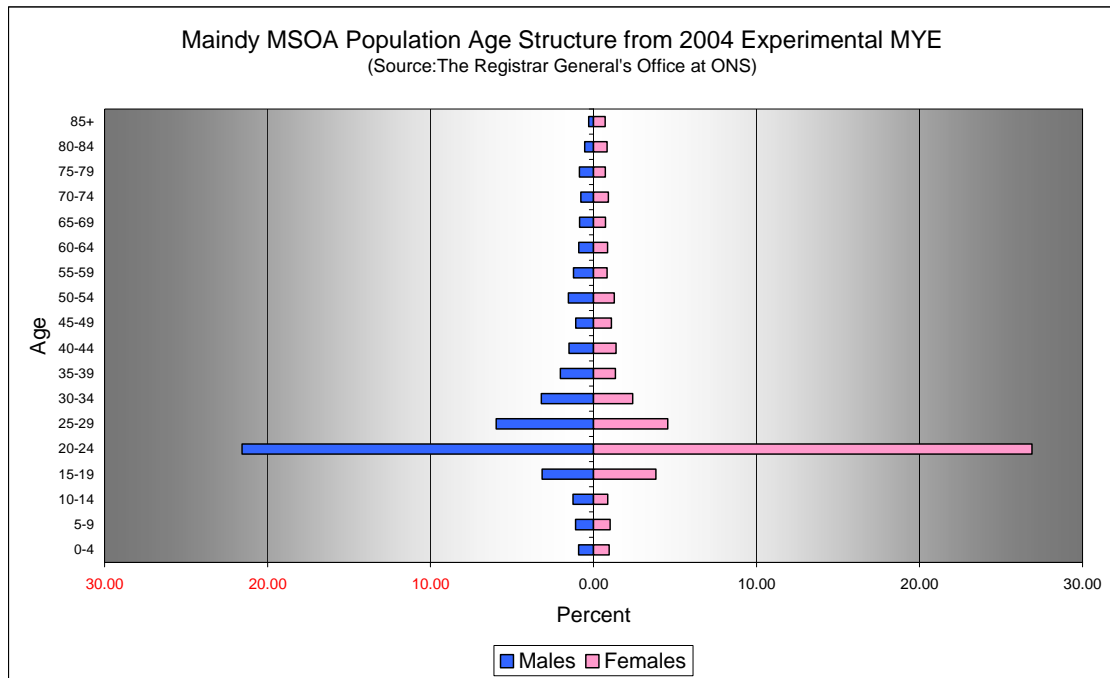


Comparison of Male Population by Age Group at Mid 2004 in Maindy MSOA [Difference = NHSAR Minus MYE] (Sources: ONS & HSW)				
Age	Males (MYE)	Males (NHSAR)	# Difference	% Difference
0-4	100	100	1	1.4
5-9	100	100	9	10.7
10-14	100	100	0	0.0
15-19	200	200	-53	-22.0
20-24	1,600	1,200	-486	-29.5
25-29	500	800	319	70.0
30-34	200	400	199	81.6
35-39	200	300	150	96.2
40-44	100	200	105	91.3
45-49	100	200	94	113.3
50-54	100	200	48	40.7
55-59	100	200	60	63.8
60-64	100	100	17	24.6
65-69	100	100	28	43.1
70-74	100	100	13	22.0
75-79	100	100	0	0.0
80-84	50	50	9	22.0
85+	50	50	10	45.5
Total	3,700	4,200	523	14.0



Comparison of Female Population by Age Group at Mid 2004 in Maindy MSOA [Difference = NHSAR Minus MYE] (Sources: ONS & HSW)				
Age	Females (MYE)	Females (NHSAR)	# Difference	% Difference
0-4	100	100	-1	-1.4
5-9	100	100	19	24.7
10-14	100	100	14	21.2
15-19	300	300	-9	-3.1
20-24	2,100	2,100	34	1.7
25-29	300	700	363	104.6
30-34	200	300	116	63.4
35-39	100	100	43	42.2
40-44	100	10	35	33.0
45-49	100	100	24	28.9
50-54	100	100	16	16.5
55-59	100	100	13	20.3
60-64	100	100	-3	-4.6
65-69	100	100	19	33.9
70-74	100	100	10	14.3
75-79	100	100	5	9.1
80-84	100	100	9	14.1
85+	100	100	12	22.2
Total	3,900	4,600	719	18.4

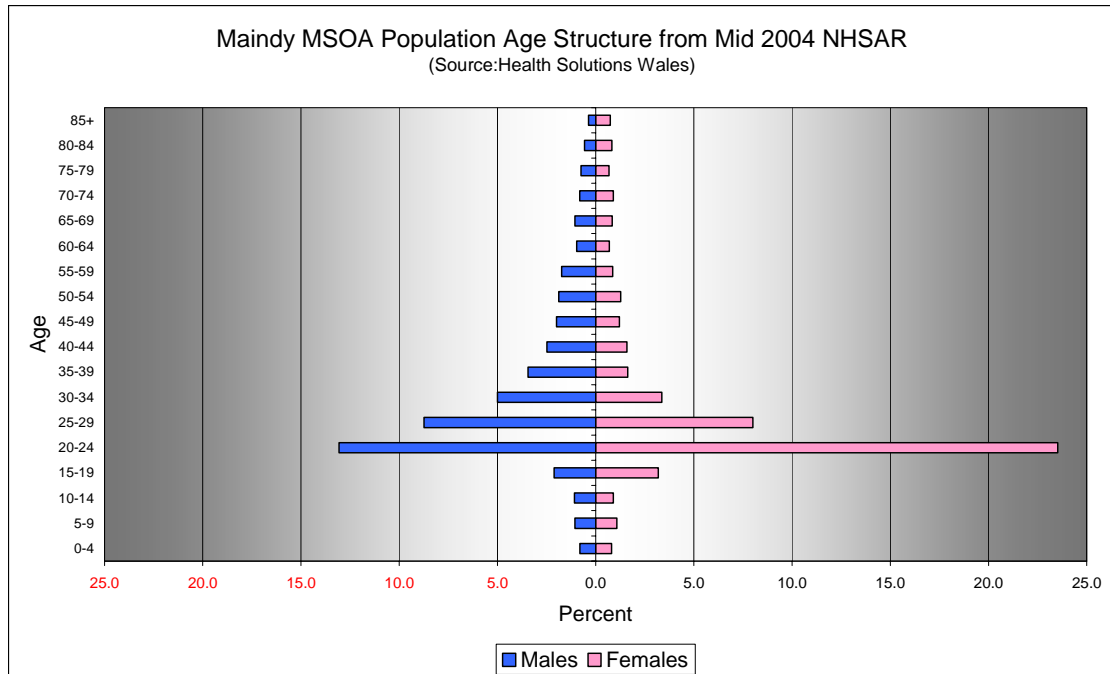
Quinary Population Age Structure - 2004 MYE



Maindy MSOA Population Age Structure 2004 MYE (Source: ONS)			
Age	Males	Females	Persons
0-4	100	100	100
5-9	100	100	200
10-14	100	100	200
15-19	200	300	500
20-24	1,600	2,100	3,700
25-29	500	300	800
30-34	200	200	400
35-39	200	100	300
40-44	100	100	200
45-49	100	100	200
50-54	100	100	200
55-59	100	100	200
60-64	100	100	100
65-69	100	100	100
70-74	100	100	100
75-79	100	100	100
80-84	50	100	100
85+	50	100	100
Total	3,700	3,900	7,600

Maindy MSOA Population Age Structure 2004 MYE - Percentage of total Persons (Source: ONS)			
Age	Males	Females	Persons
0-4	0.9	1.0	1.9
5-9	1.1	1.0	2.1
10-14	1.3	0.9	2.1
15-19	3.2	3.8	7.0
20-24	21.6	26.9	48.5
25-29	6.0	4.5	10.5
30-34	3.2	2.4	5.6
35-39	2.0	1.3	3.4
40-44	1.5	1.4	2.9
45-49	1.1	1.1	2.2
50-54	1.5	1.3	2.8
55-59	1.2	0.8	2.1
60-64	0.9	0.9	1.8
65-69	0.9	0.7	1.6
70-74	0.8	0.9	1.7
75-79	0.9	0.7	1.6
80-84	0.5	0.8	1.4
85+	0.3	0.7	1.0
Total	48.8	51.2	100.0

Quinary Population Age Structure Mid 2004 NHSAR



Maindy MSOA Population Age Structure - NHSAR Mid 2004 (Source: HSW)			
Age	Males	Females	Persons
0-4	100	100	100
5-9	100	100	200
10-14	100	100	200
15-19	200	300	500
20-24	1,200	2,100	3,200
25-29	800	700	1,500
30-34	400	200	700
35-39	300	100	500
40-44	200	100	400
45-49	200	100	300
50-54	200	100	300
55-59	200	100	200
60-64	100	100	100
65-69	100	100	200
70-74	100	100	200
75-79	100	100	100
80-84	50	100	100
85+	50	100	100
Total	4,200	3,900	8,900

Maindy MSOA Population Age Structure % of Total Persons - NHSAR Mid 2004 (Source: HSW)			
Age	Males	Females	Persons
0-4	0.8	0.8	1.6
5-9	1.0	1.1	2.1
10-14	1.1	0.9	2.0
15-19	2.1	3.2	5.3
20-24	13.1	23.5	36.6
25-29	8.7	8.0	16.7
30-34	5.0	3.4	8.4
35-39	3.4	1.6	5.1
40-44	2.5	1.6	4.1
45-49	2.0	1.2	3.2
50-54	1.9	1.3	3.1
55-59	1.7	0.9	2.6
60-64	1.0	0.7	1.7
65-69	1.0	0.8	1.9
70-74	0.8	0.9	1.7
75-79	0.7	0.7	1.4
80-84	0.6	0.8	1.4
85+	0.4	0.7	1.1
Total	47.9	52.1	100.0