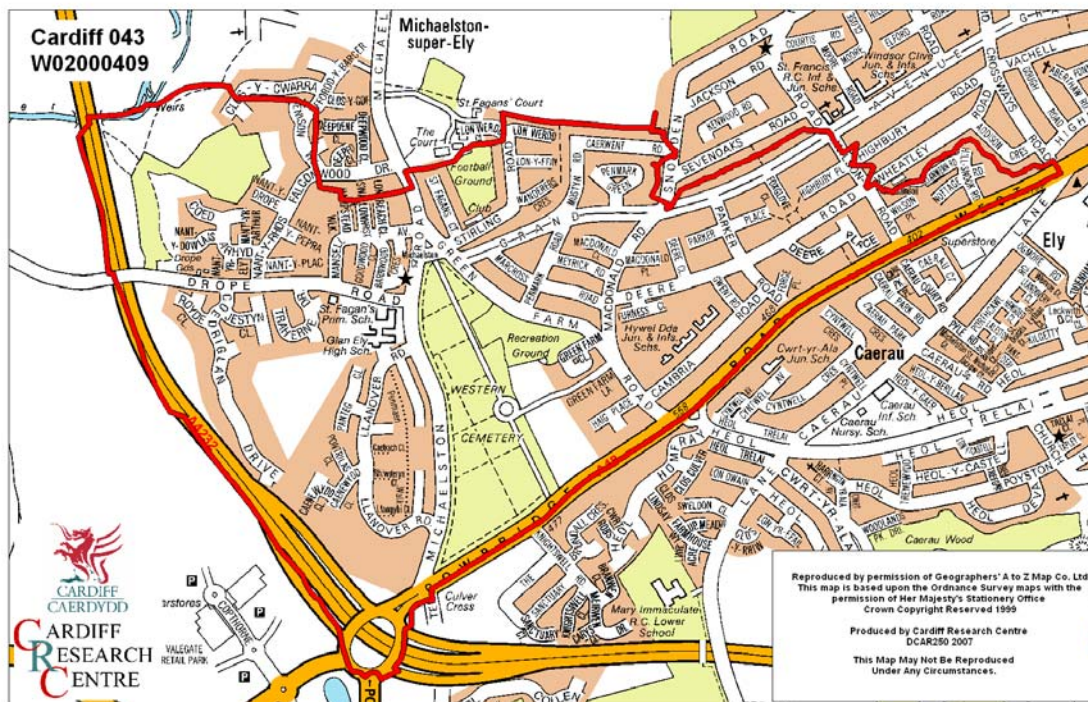


Michaelston Middle Super Output Area

A comparison of Population Age Structure's for Mid 2004 from the National Statistics experimental Mid Year Estimate and the National Health Service Administrative Records (NHSAR)

Figure: Michaelston MSOA (Cardiff West Locality)



Disclosure Control: Due to a requirement to observe the Registrar General's disclosure control protocols for experimental and official Mid Year Estimates of population it has been necessary to round population figures provided in this profile to the nearest 100 persons. Due to the danger of disclosure by difference the NHSAR population figures in this brief have also been rounded to the nearest 100 persons. For both datasets, when the population estimate was less than 50 persons, the value of 50 has been used. However, it is important to note that all graphics and the percentages presented in this profile have been produced using raw un-rounded estimates. The difference between NHSAR and MYE population estimates are also presented here in their un-rounded raw format.

Summary Key Statistics

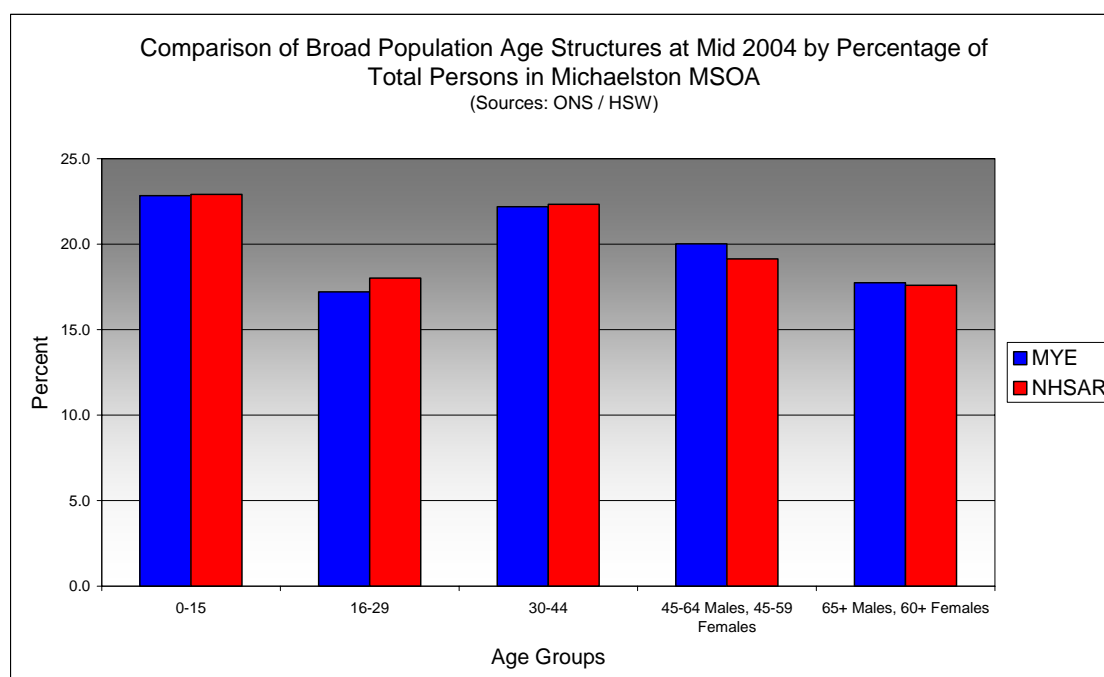
- In Michaelston total NHSAR population at Mid 2004 was 5.6% (approximately 250 persons) higher than the experimental Mid Year Estimate.
- Total male NHSAR population was 5.6% higher, while total female population was 2.5% higher than the experimental Mid Year Estimate.
- NHSAR population counts showed the greatest variance from the Experimental MYEs in the following age groups: 85+ years 14.7% higher (note this only equates to 11 persons) and those aged 20 to 24 years 12.3% higher.
- Michaelston is ranked 14th (MYE) and 8th (NHSAR) out of 47 MSOAs in Cardiff for it's total dependency ratio.
- Within the Cardiff West Locality Michaelston is ranked 4th (MYE) and 2nd (NHSAR) out of 13 MSOAs for it's total dependency ratio.
- Michaelston is ranked 21st (MYE & NHSAR) out of 47 MSOAs in Cardiff for the total number of younger dependents aged 0 to 14.
- Within it's locality Michaelston is ranked 7th (MYE & NHSAR) out of 13 MSOAs for the total number of younger dependents aged 0 to 14.
- Michaelston is ranked 23rd (MYE) and 25th (NHSAR) out of 47 MSOAs for the total number of older dependents aged 65 plus.
- Within it's locality Michaelston is ranked 6th (MYE) and 7th (NHSAR) out of 13 MSOAs for the total number of older dependents aged 65 plus.
- The majority of dependent age groups (0 to 14 + 65 and over) are younger dependents aged 0 to 14, representing 58.7% (MYE) and 59.0% (NHSAR) of total dependents.

Dependency Ratios at Mid 2004 in Michaelston MSOA (Sources: Derived from Data Supplied by ONS & HSW)		
	MYE	NHSAR
Dependents Aged 0 - 14	1,300	1,300
Dependents Aged 65 Plus	900	900
Total Dependents	2,200	2,300
Persons Aged 15 to 64	3,800	4,000
Total Persons	6,000	6,200
Michaelston Dependency Ratio	0.57	0.57
Locality Dependency Ratio	0.52	0.47
Cardiff Dependency Ratio	0.47	0.43
Wales Dependency Ratio	0.57	0.52

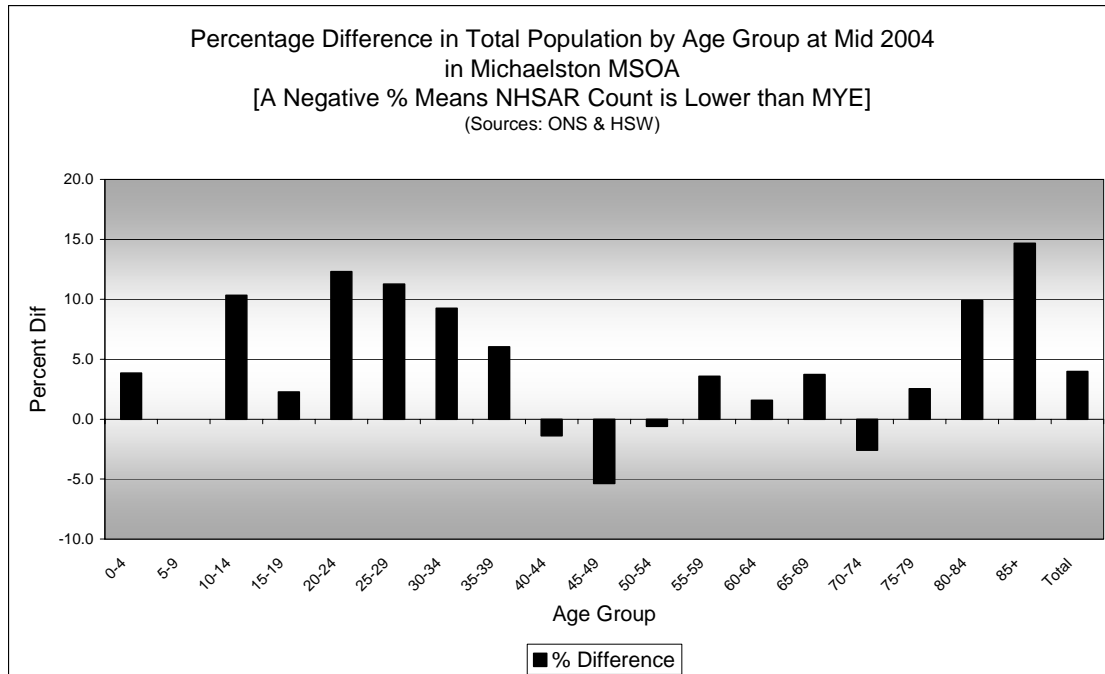
Broad Age Group Comparisons

Comparison of Population Sources by Broad Age Group for Mid 2004 in Michaelston MSOA						
	0-15	16-29	30-44	45-64 Males, 45-59 Females	65+ Males, 60+ Females	All Ages
MYE	1,400	1,000	1,300	1,200	1,100	6,000
NHSAR	1,400	1,100	1,400	1,200	1,100	6,200
Difference #	59	91	62	-7	33	238
Difference %	4.3	8.8	4.7	-0.6	3.1	4.0

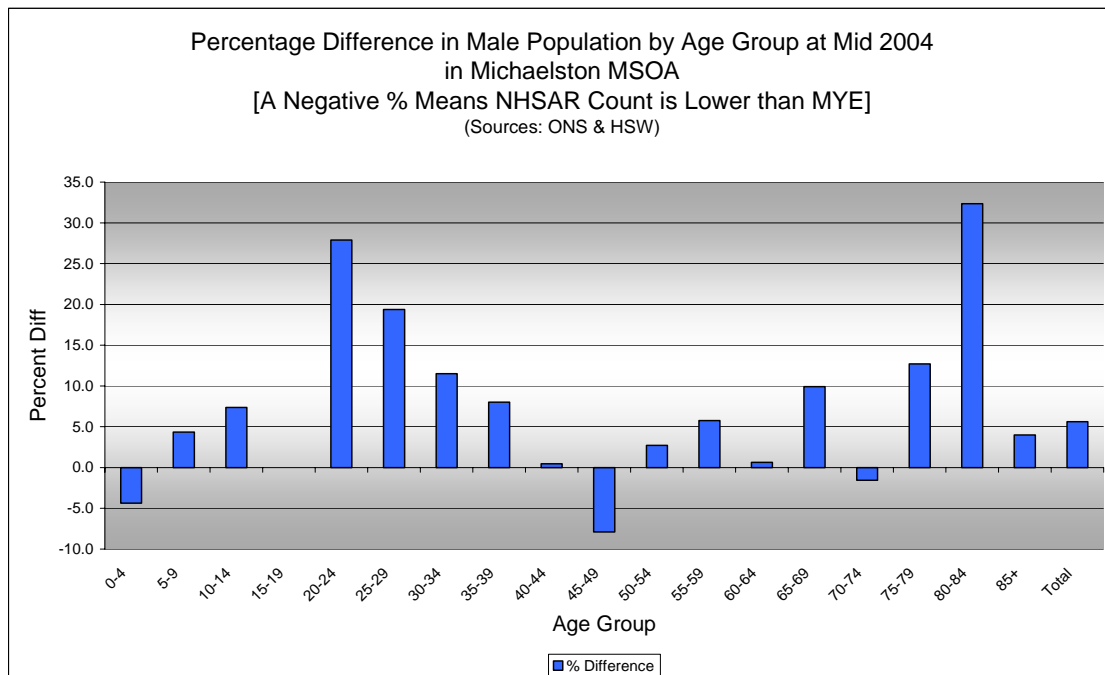
Comparison of Broad Population Age Structures for Mid 2004 by Percentage of Total Population in Michaelston MSOA						
	0-15	16-29	30-44	45-64 Males, 45-59 Females	65+ Males, 60+ Females	All Ages
MYE	22.8	17.2	22.2	20.0	17.7	100.0
NHSAR	22.9	18.0	22.3	19.1	17.6	100.0



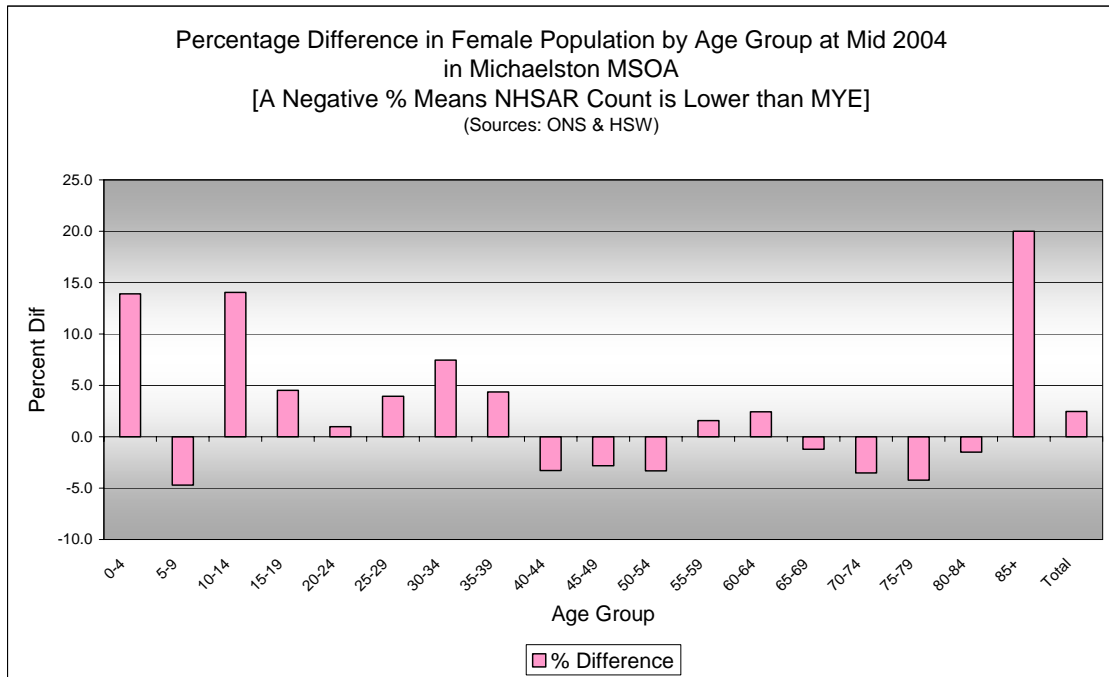
Quinary Age Group Comparisons – 2004 NHSAR Minus MYE



Comparison of Total Population by Age Group at Mid 2004 in Michaelston MSOA [Difference = NHSAR Minus MYE] (Sources: ONS & HSW)				
Age	Persons (MYE)	Persons (NHSAR)	# Difference	% Difference
0-4	400	400	16	3.8
5-9	400	400	0	0.0
10-14	400	500	43	10.3
15-19	400	500	10	2.3
20-24	300	400	43	12.3
25-29	300	400	38	11.3
30-34	400	500	40	9.3
35-39	500	500	28	6.0
40-44	400	400	-6	-1.4
45-49	400	300	-19	-5.4
50-54	300	300	-2	-0.6
55-59	400	400	13	3.6
60-64	300	300	5	1.6
65-69	300	300	11	3.7
70-74	300	300	-7	-2.6
75-79	200	200	4	2.5
80-84	100	100	10	9.9
85+	100	100	11	14.7
Total	6,000	6,200	238	4.0



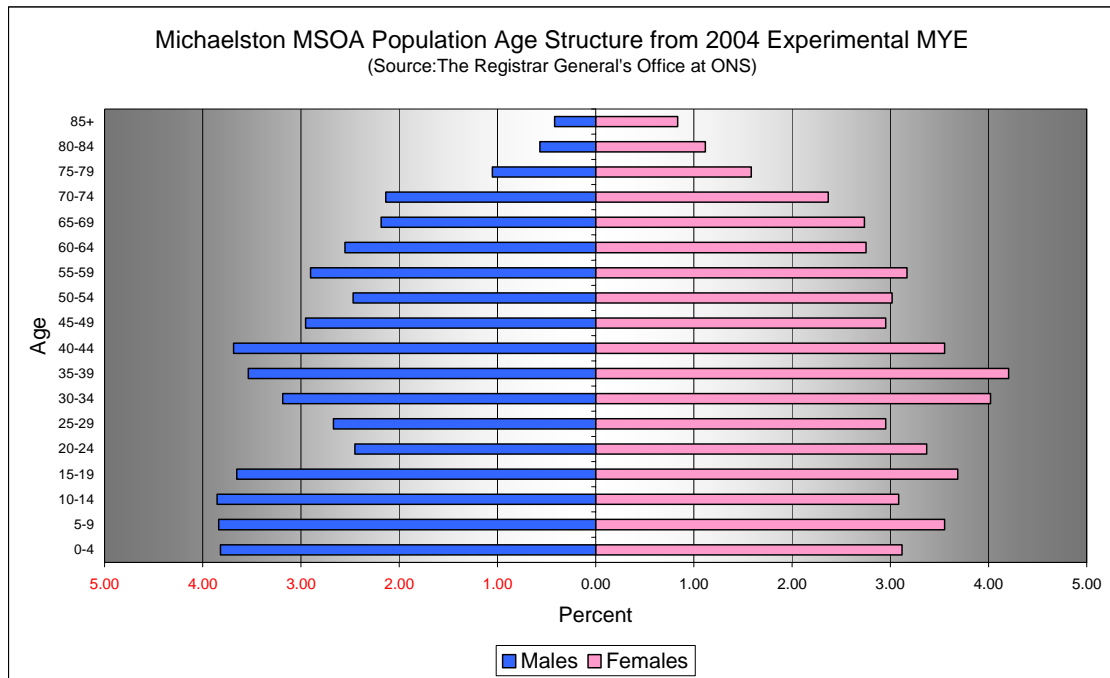
Comparison of Male Population by Age Group at Mid 2004 in Michaelston MSOA [Difference = NHSAR Minus MYE] (Sources: ONS & HSW)				
Age	Males (MYE)	Males (NHSAR)	# Difference	% Difference
0-4	200	200	-10	-4.4
5-9	200	200	10	4.3
10-14	200	200	17	7.4
15-19	200	200	0	0.0
20-24	100	200	41	27.9
25-29	200	200	31	19.4
30-34	200	200	22	11.5
35-39	200	200	17	8.0
40-44	200	200	1	0.5
45-49	200	200	-14	-7.9
50-54	100	200	4	2.7
55-59	200	200	10	5.7
60-64	200	200	1	0.7
65-69	100	100	13	9.9
70-74	100	100	-2	-1.6
75-79	100	100	8	12.7
80-84	50	50	11	32.4
85+	50	20	1	4.0
Total	2,900	3,000	161	5.6



Comparison of Female Population by Age Group at Mid 2004 in Michaelston MSOA
[Difference = NHSAR Minus MYE] (Sources: ONS & HSW)

Age	Females (MYE)	Females (NHSAR)	# Difference	% Difference
0-4	200	200	26	13.9
5-9	200	200	-10	-4.7
10-14	200	200	26	14.1
15-19	200	200	10	4.5
20-24	200	200	2	1.0
25-29	200	200	7	4.0
30-34	200	300	18	7.5
35-39	300	300	11	4.4
40-44	200	200	-7	-3.3
45-49	200	200	-5	-2.8
50-54	200	200	-6	-3.3
55-59	200	200	3	1.6
60-64	200	200	4	2.4
65-69	200	200	-2	-1.2
70-74	100	100	-5	-3.5
75-79	100	100	-4	-4.2
80-84	100	100	-1	-1.5
85+	50	100	10	20.0
Total	3,100	3,200	77	2.5

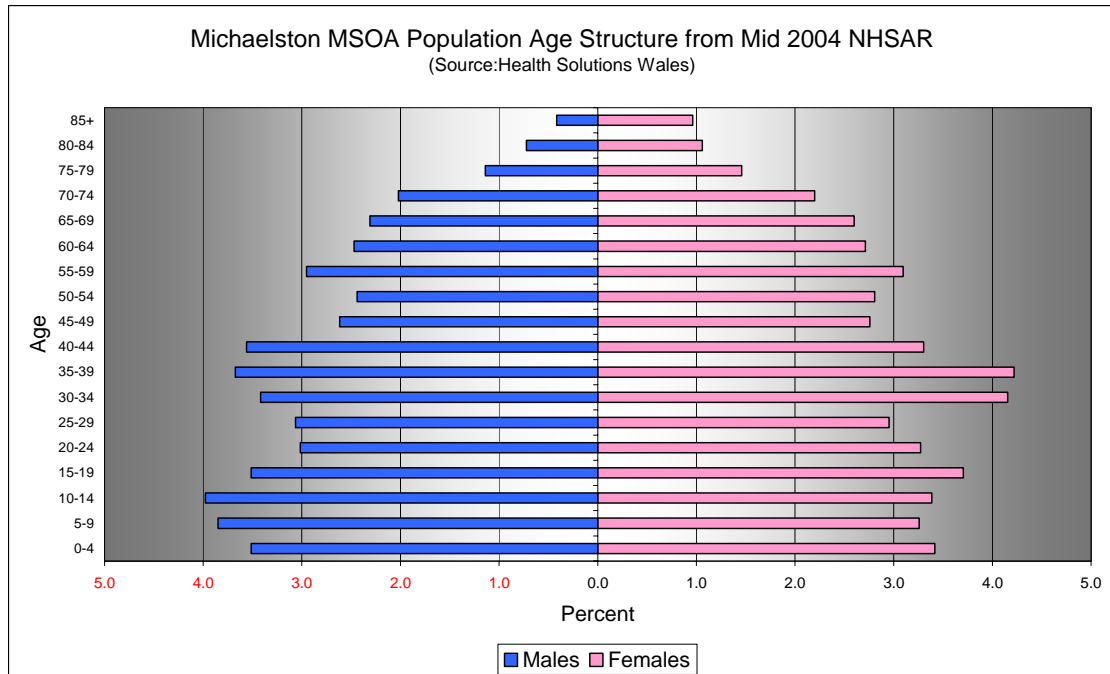
Quinary Population Age Structure - 2004 MYE



Michaelston MSOA Population Age Structure 2004 MYE (Source: ONS)			
Age	Males	Females	Persons
0-4	200	200	400
5-9	200	200	400
10-14	200	200	400
15-19	200	200	400
20-24	100	200	300
25-29	200	200	300
30-34	200	200	400
35-39	200	300	500
40-44	200	200	400
45-49	200	200	400
50-54	100	200	300
55-59	200	200	400
60-64	200	200	300
65-69	100	200	300
70-74	100	100	300
75-79	100	100	200
80-84	50	100	100
85+	50	50	100
Total	2,900	3,100	6,000

Michaelston MSOA Population Age Structure 2004 MYE - Percentage of total Persons (Source: ONS)			
Age	Males	Females	Persons
0-4	3.8	3.1	6.9
5-9	3.8	3.6	7.4
10-14	3.9	3.1	6.9
15-19	3.7	3.7	7.3
20-24	2.5	3.4	5.8
25-29	2.7	3.0	5.6
30-34	3.2	4.0	7.2
35-39	3.5	4.2	7.7
40-44	3.7	3.6	7.2
45-49	3.0	3.0	5.9
50-54	2.5	3.0	5.5
55-59	2.9	3.2	6.1
60-64	2.6	2.8	5.3
65-69	2.2	2.7	4.9
70-74	2.1	2.4	4.5
75-79	1.1	1.6	2.6
80-84	0.6	1.1	1.7
85+	0.4	0.8	1.3
Total	47.9	52.1	100.0

Quinary Population Age Structure Mid 2004 NHSAR



Michaelston MSOA Population Age Structure - NHSAR Mid 2004 (Source: HSW)			
Age	Males	Females	Persons
0-4	200	200	400
5-9	200	200	400
10-14	200	200	500
15-19	200	200	500
20-24	200	200	400
25-29	200	200	400
30-34	200	300	500
35-39	200	300	500
40-44	200	200	400
45-49	200	200	300
50-54	200	200	300
55-59	200	200	400
60-64	200	200	300
65-69	100	200	300
70-74	100	100	300
75-79	100	100	200
80-84	50	100	100
85+	20	100	100
Total	3,000	3,200	6,200

Michaelston MSOA Population Age Structure % of Total Persons - NHSAR Mid 2004 (Source: HSW)			
Age	Males	Females	Persons
0-4	3.5	3.4	6.9
5-9	3.9	3.3	7.1
10-14	4.0	3.4	7.4
15-19	3.5	3.7	7.2
20-24	3.0	3.3	6.3
25-29	3.1	3.0	6.0
30-34	3.4	4.2	7.6
35-39	3.7	4.2	7.9
40-44	3.6	3.3	6.9
45-49	2.6	2.8	5.4
50-54	2.4	2.8	5.2
55-59	3.0	3.1	6.0
60-64	2.5	2.7	5.2
65-69	2.3	2.6	4.9
70-74	2.0	2.2	4.2
75-79	1.1	1.5	2.6
80-84	0.7	1.1	1.8
85+	0.4	1.0	1.4
Total	48.7	51.3	100.0