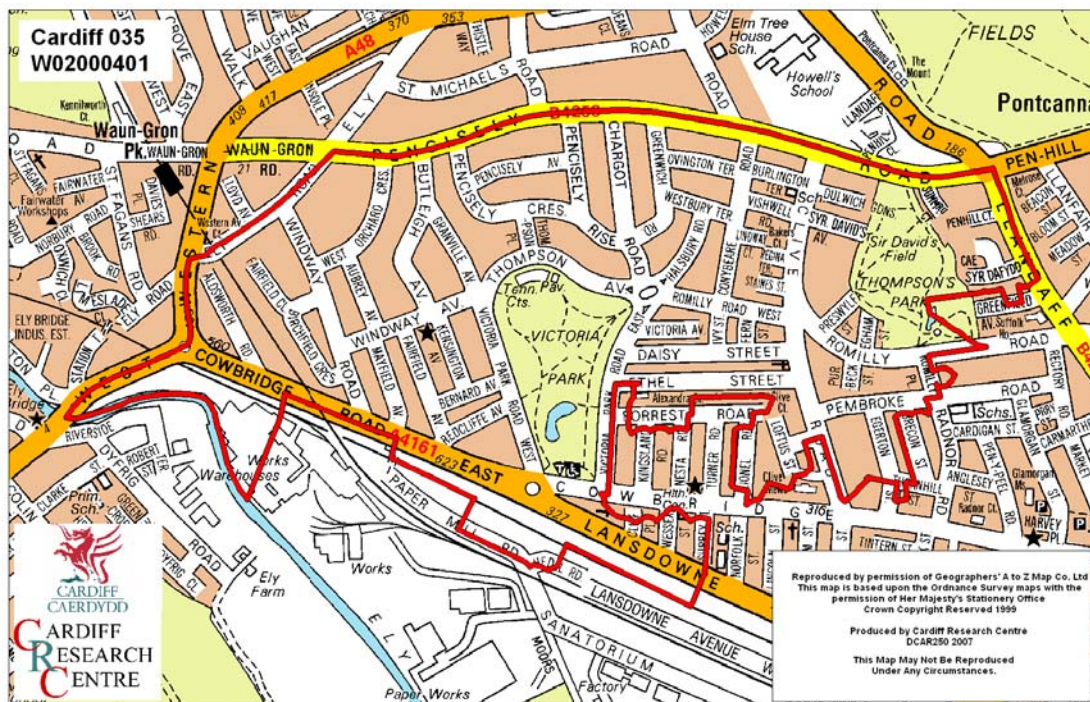


Pencisely Middle Super Output Area

A comparison of Population Age Structure's for Mid 2004 from the National Statistics experimental Mid Year Estimate and the National Health Service Administrative Records (NHSAR)

Figure: Pencisely MSOA (Cardiff West Locality)



Disclosure Control: Due to a requirement to observe the Registrar General's disclosure control protocols for experimental and official Mid Year Estimates of population it has been necessary to round population figures provided in this profile to the nearest 100 persons. Due to the danger of disclosure by difference the NHSAR population figures in this brief have also been rounded to the nearest 100 persons. For both datasets, when the population estimate was less than 50 persons, the value of 50 has been used. However, it is important to note that all graphics and the percentages presented in this profile have been produced using raw un-rounded estimates. The difference between NHSAR and MYE population estimates are also presented here in their un-rounded raw format.

Summary Key Statistics

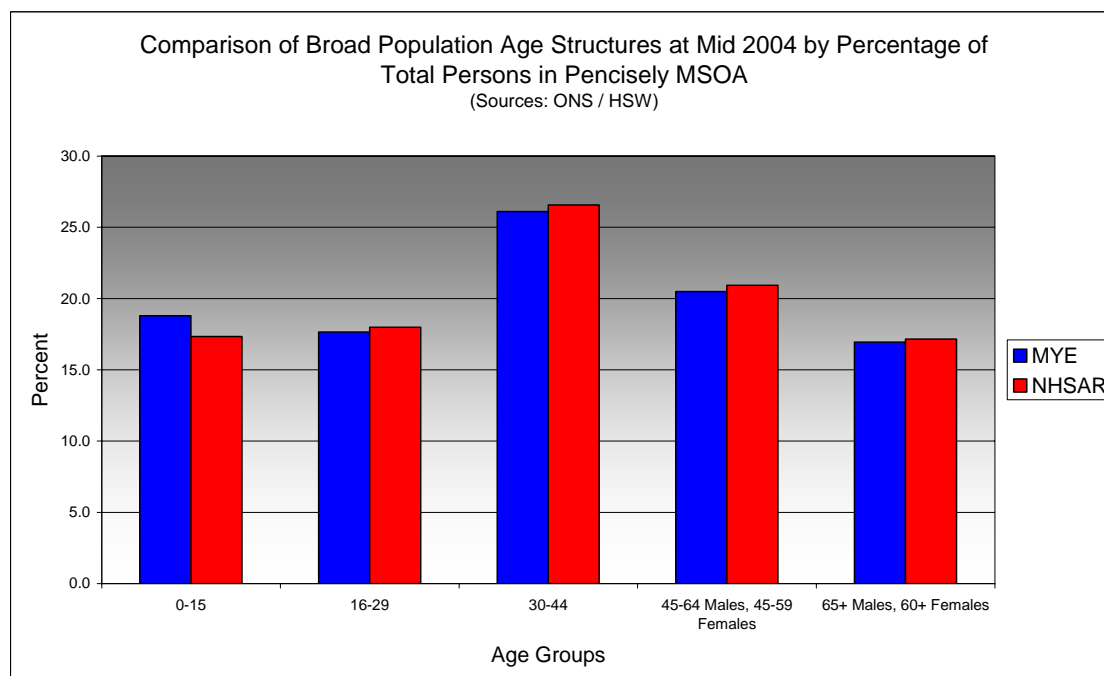
- In Pencisely total NHSAR population at Mid 2004 was 4.9% (approximately 300 persons) higher than the experimental Mid Year Estimate.
- Total male NHSAR population was 4.7% higher, while total female population was 5.0% higher than the experimental Mid Year Estimate.
- NHSAR population counts showed the greatest variance from the Experimental MYEs in the following age groups: 25 to 29 years 15.2% higher and those aged 30 to 34 years 10.1% higher.
- Pencisely is ranked 30th (MYE) and 28th (NHSAR) out of 47 MSOAs in Cardiff for it's total dependency ratio.
- Within the Cardiff West Locality Pencisely is ranked 9th (MYE) and 8th (NHSAR) out of 13 MSOAs for it's total dependency ratio.
- Pencisely is ranked 34th (MYE) and 37th (NHSAR) out of 47 MSOAs in Cardiff for the total number of younger dependents aged 0 to 14.
- Within it's locality Pencisely is ranked 12th (MYE & NHSAR) out of 13 MSOAs for the total number of younger dependents aged 0 to 14.
- Pencisely is ranked 27th (MYE) and 26th (NHSAR) out of 47 MSOAs for the total number of older dependents aged 65 plus.
- Within it's locality Pencisely is ranked 10th (MYE) and 8th (NHSAR) out of 13 MSOAs for the total number of older dependents aged 65 plus.
- The majority of dependent age groups (0 to 14 + 65 and over) are younger dependents aged 0 to 14, representing 54.5% (MYE) and 52.1% (NHSAR) of total dependents.

Dependency Ratios at Mid 2004 in Pencisely MSOA (Sources: Derived from Data Supplied by ONS & HSW)		
	MYE	NHSAR
Dependents Aged 0 - 14	1,000	1,000
Dependents Aged 65 Plus	900	900
Total Dependents	1,900	1,900
Persons Aged 15 to 64	3,900	4,200
Total Persons	5,800	6,100
Pencisely Dependency Ratio	0.48	0.46
Locality Dependency Ratio	0.52	0.47
Cardiff Dependency Ratio	0.47	0.43
Wales Dependency Ratio	0.57	0.52

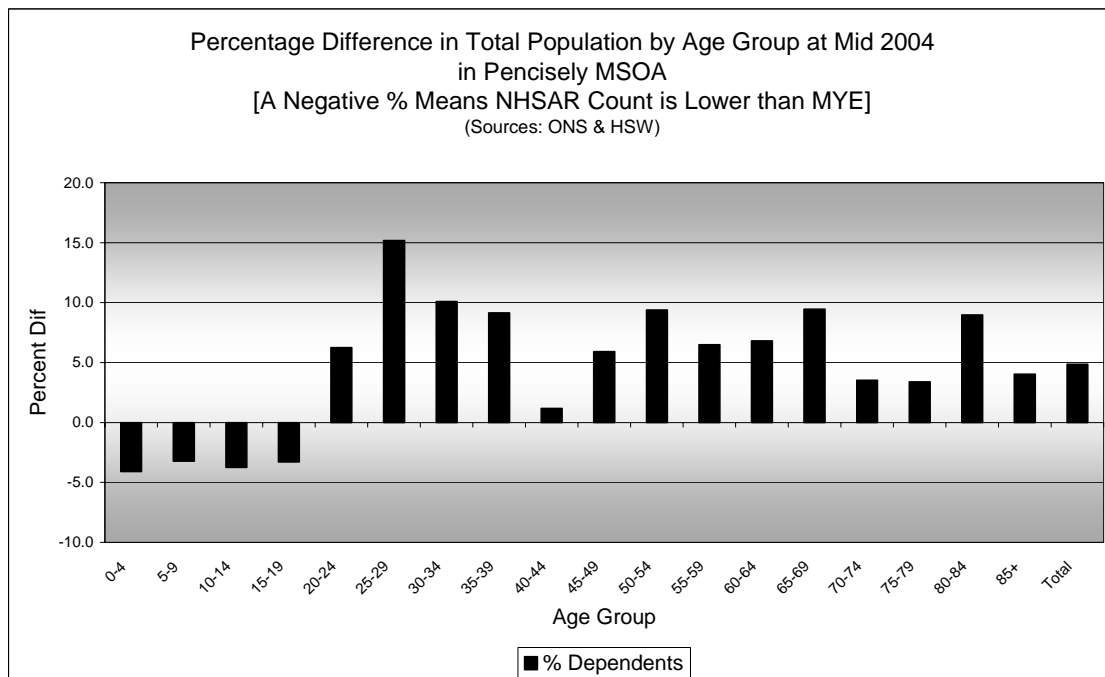
Broad Age Group Comparisons

Comparison of Population Sources by Broad Age Group for Mid 2004 in Pencisely MSOA						
	0-15	16-29	30-44	45-64 Males, 45-59 Females	65+ Males, 60+ Females	All Ages
MYE	1,100	1,000	1,500	1,200	1,000	5,800
NHSAR	1,100	1,100	1,600	1,300	1,000	6,100
Difference #	-35	70	102	84	61	282
Difference %	-3.2	6.8	6.7	7.1	6.2	4.9

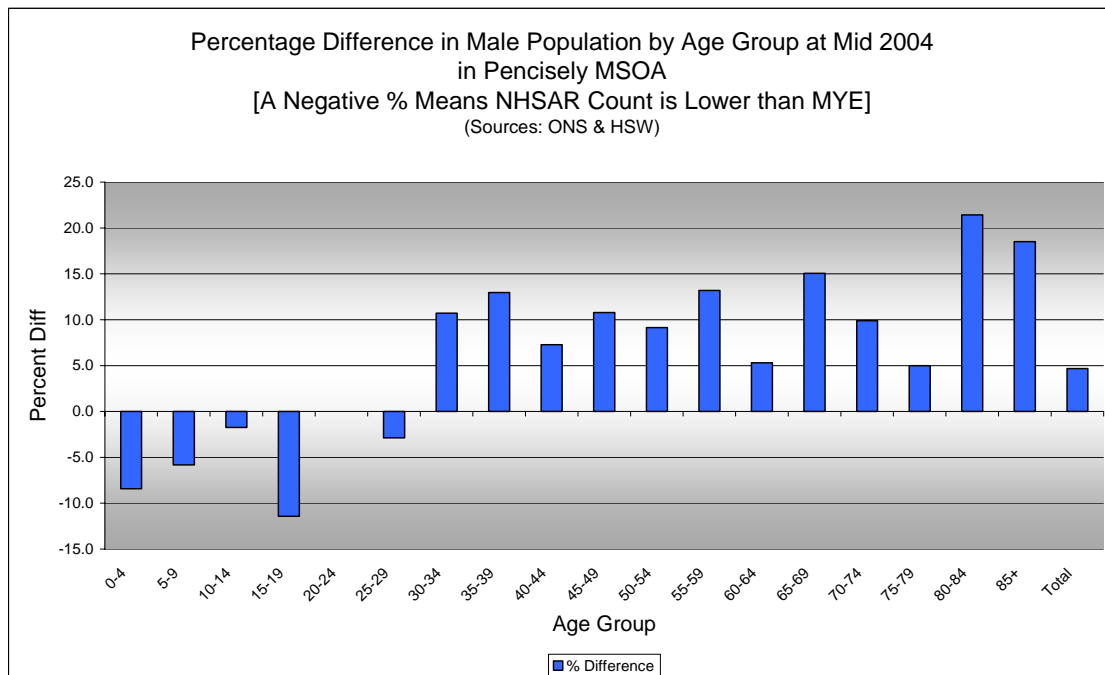
Comparison of Broad Population Age Structures for Mid 2004 by Percentage of Total Population in Pencisely MSOA						
	0-15	16-29	30-44	45-64 Males, 45-59 Females	65+ Males, 60+ Females	All Ages
MYE	18.8	17.7	26.1	20.5	16.9	100.0
NHSAR	17.3	18.0	26.6	20.9	17.2	100.0



Quinary Age Group Comparisons – 2004 NHSAR Minus MYE

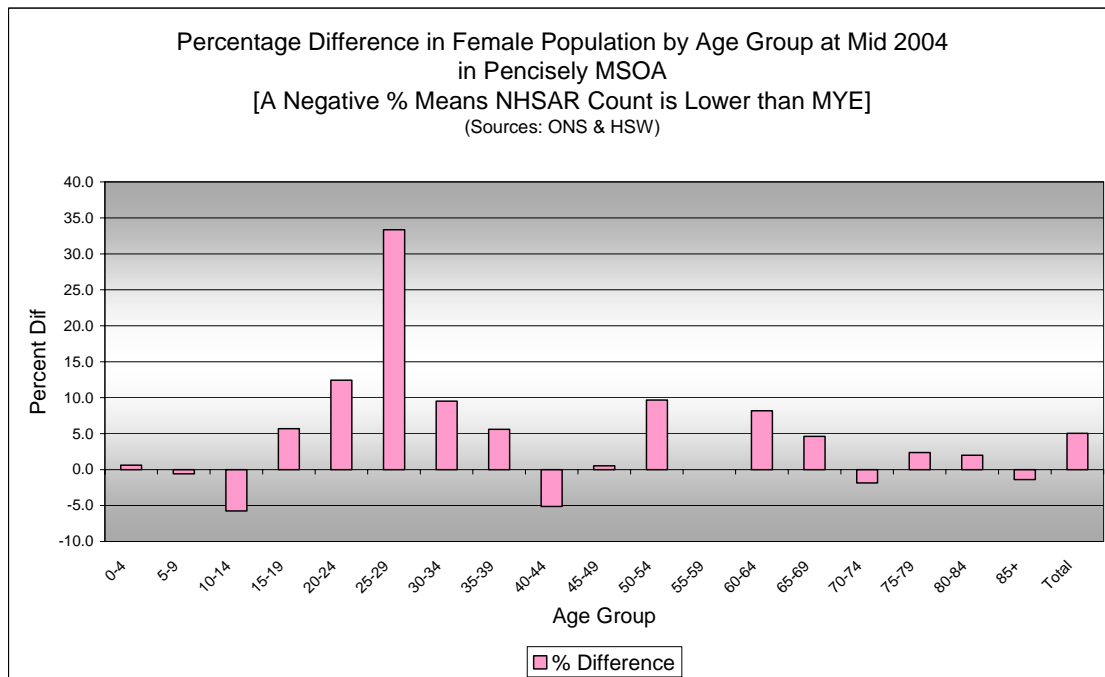


Comparison of Total Population by Age Group at Mid 2004 in Pencisely MSOA [Difference = NHSAR Minus MYE] (Sources: ONS & HSW)				
Age	Persons (MYE)	Persons (NHSAR)	# Difference	% Dependents
0-4	300	300	-14	-4.1
5-9	300	300	-11	-3.2
10-14	300	300	-13	-3.8
15-19	300	300	-11	-3.3
20-24	300	400	21	6.3
25-29	400	500	63	15.2
30-34	500	500	49	10.1
35-39	500	600	47	9.1
40-44	500	500	6	1.2
45-49	400	400	23	5.9
50-54	400	400	34	9.4
55-59	300	300	21	6.5
60-64	200	300	16	6.8
65-69	200	200	19	9.5
70-74	200	200	7	3.5
75-79	200	200	7	3.4
80-84	200	200	14	9.0
85+	100	100	4	4.0
Total	5,800	6,100	282	4.9



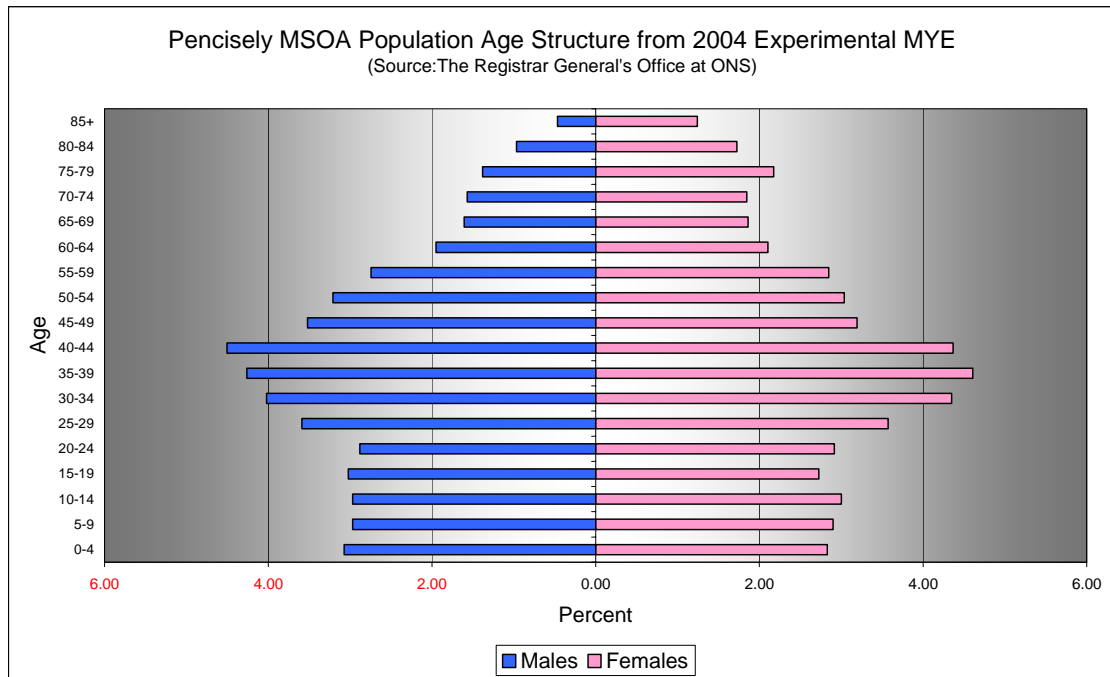
Comparison of Male Population by Age Group at Mid 2004 in Pencisely MSOA
[Difference = NHSAR Minus MYE] (Sources: ONS & HSW)

Age	Males (MYE)	Males (NHSAR)	# Difference	% Difference
0-4	200	200	-15	-8.4
5-9	200	200	-10	-5.8
10-14	200	200	-3	-1.7
15-19	200	200	-20	-11.4
20-24	200	200	0	0.0
25-29	200	200	-6	-2.9
30-34	200	300	25	10.7
35-39	200	300	32	13.0
40-44	300	300	19	7.3
45-49	200	200	22	10.8
50-54	200	200	17	9.1
55-59	200	200	21	13.2
60-64	100	100	6	5.3
65-69	100	100	14	15.1
70-74	100	100	9	9.9
75-79	100	100	4	5.0
80-84	100	100	12	21.4
85+	50	50	5	18.5
Total	2,800	3,000	132	4.7



Comparison of Female Population by Age Group at Mid 2004 in Pencisely MSOA [Difference = NHSAR Minus MYE] (Sources: ONS & HSW)				
Age	Females (MYE)	Females (NHSAR)	# Difference	% Difference
0-4	200	200	1	0.6
5-9	200	200	-1	-0.6
10-14	200	200	-10	-5.7
15-19	200	200	9	5.7
20-24	200	200	21	12.4
25-29	200	300	69	33.3
30-34	300	300	24	9.5
35-39	300	300	15	5.6
40-44	300	200	-13	-5.1
45-49	100	200	1	0.5
50-54	200	200	17	9.7
55-59	200	200	0	0.0
60-64	100	100	10	8.2
65-69	100	100	5	4.6
70-74	100	100	-2	-1.9
75-79	100	100	3	2.4
80-84	100	100	2	2.0
85+	100	100	-1	-1.4
Total	3,000	3,100	150	5.0

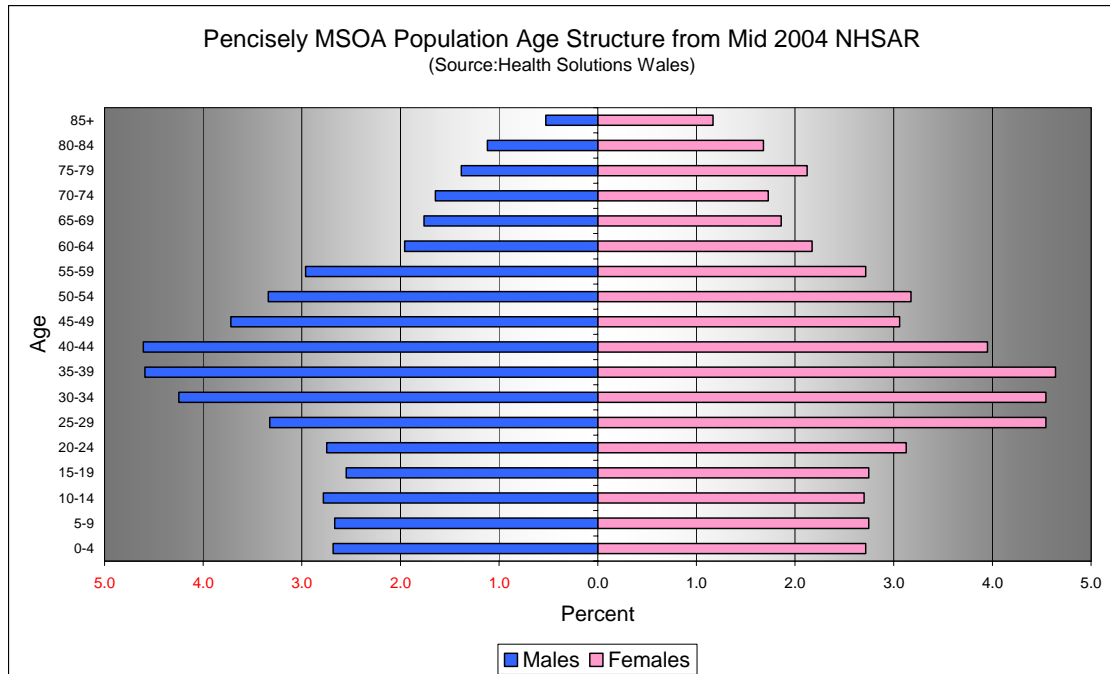
Quinary Population Age Structure - 2004 MYE



Pencisely MSOA Population Age Structure 2004 MYE (Source: ONS)			
Age	Males	Females	Persons
0-4	200	200	300
5-9	200	200	300
10-14	200	200	300
15-19	200	200	300
20-24	200	200	300
25-29	200	200	400
30-34	200	300	500
35-39	200	300	500
40-44	300	300	500
45-49	200	100	400
50-54	200	200	400
55-59	200	200	300
60-64	100	100	200
65-69	100	100	200
70-74	100	100	200
75-79	100	100	200
80-84	100	100	200
85+	50	100	100
Total	2,800	3,000	5,800

Pencisely MSOA Population Age Structure 2004 MYE - Percentage of total Persons (Source: ONS)			
Age	Males	Females	Persons
0-4	3.1	2.8	5.9
5-9	3.0	2.9	5.9
10-14	3.0	3.0	6.0
15-19	3.0	2.7	5.7
20-24	2.9	2.9	5.8
25-29	3.6	3.6	7.2
30-34	4.0	4.3	8.4
35-39	4.3	4.6	8.9
40-44	4.5	4.4	8.9
45-49	3.5	3.2	6.7
50-54	3.2	3.0	6.2
55-59	2.7	2.8	5.6
60-64	1.9	2.1	4.1
65-69	1.6	1.9	3.5
70-74	1.6	1.8	3.4
75-79	1.4	2.2	3.6
80-84	1.0	1.7	2.7
85+	0.5	1.2	1.7
Total	48.7	51.3	100.0

Quinary Population Age Structure Mid 2004 NHSAR



Pencisely MSOA Population Age Structure - NHSAR Mid 2004 (Source: HSW)			
Age	Males	Females	Persons
0-4	200	200	300
5-9	200	200	300
10-14	200	200	300
15-19	200	200	300
20-24	200	200	400
25-29	200	300	500
30-34	300	300	500
35-39	300	300	600
40-44	300	200	500
45-49	200	200	400
50-54	200	200	400
55-59	200	200	300
60-64	100	100	300
65-69	100	100	200
70-74	100	100	200
75-79	100	100	200
80-84	100	100	200
85+	50	100	100
Total	3,000	3,100	6,100

Pencisely MSOA Population Age Structure % of Total Persons - NHSAR Mid 2004 (Source: HSW)			
Age	Males	Females	Persons
0-4	2.7	2.7	5.4
5-9	2.7	2.7	5.4
10-14	2.8	2.7	5.5
15-19	2.6	2.7	5.3
20-24	2.7	3.1	5.9
25-29	3.3	4.5	7.9
30-34	4.2	4.5	8.8
35-39	4.6	4.6	9.2
40-44	4.6	3.9	8.6
45-49	3.7	3.1	6.8
50-54	3.3	3.2	6.5
55-59	3.0	2.7	5.7
60-64	2.0	2.2	4.1
65-69	1.8	1.9	3.6
70-74	1.6	1.7	3.4
75-79	1.4	2.1	3.5
80-84	1.1	1.7	2.8
85+	0.5	1.2	1.7
Total	48.6	51.4	100.0