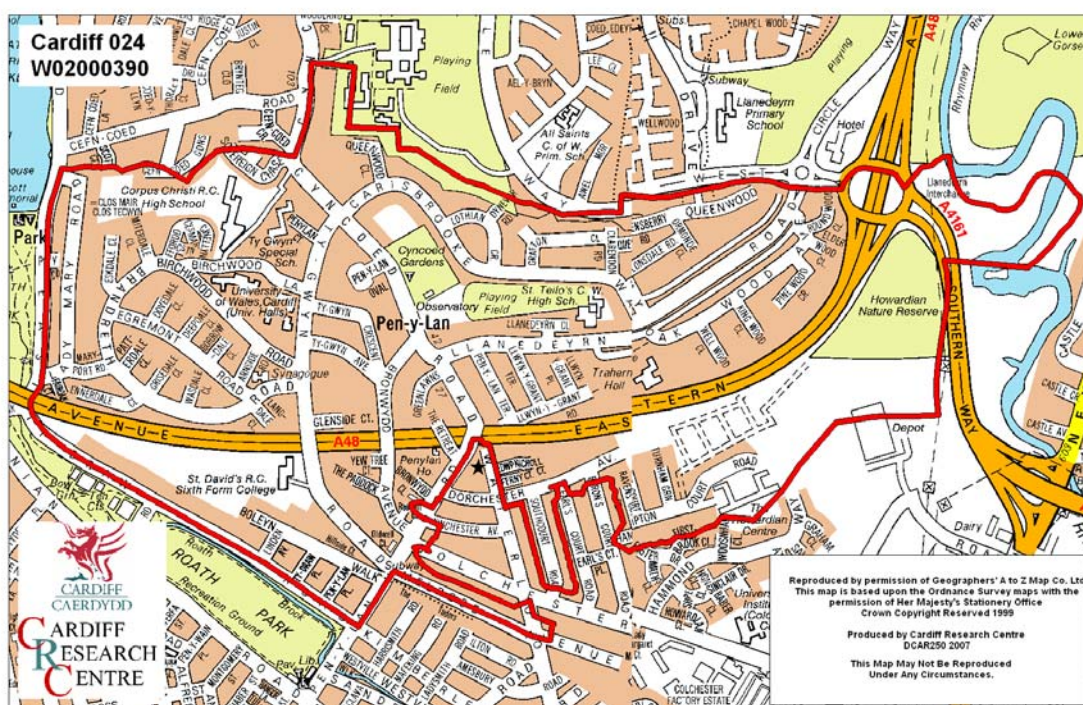


Penylan Middle Super Output Area

A comparison of Population Age Structure's for Mid 2004 from the National Statistics experimental Mid Year Estimate and the National Health Service Administrative Records (NHSAR)

Figure: Penylan MSOA (Cardiff Central Locality)



Disclosure Control: Due to a requirement to observe the Registrar General's disclosure control protocols for experimental and official Mid Year Estimates of population it has been necessary to round population figures provided in this profile to the nearest 100 persons. Due to the danger of disclosure by difference the NHSAR population figures in this brief have also been rounded to the nearest 100 persons. For both datasets, when the population estimate was less than 50 persons, the value of 50 has been used. However, it is important to note that all graphics and the percentages presented in this profile have been produced using raw un-rounded estimates. The difference between NHSAR and MYE population estimates are also presented here in their un-rounded raw format.

Summary Key Statistics

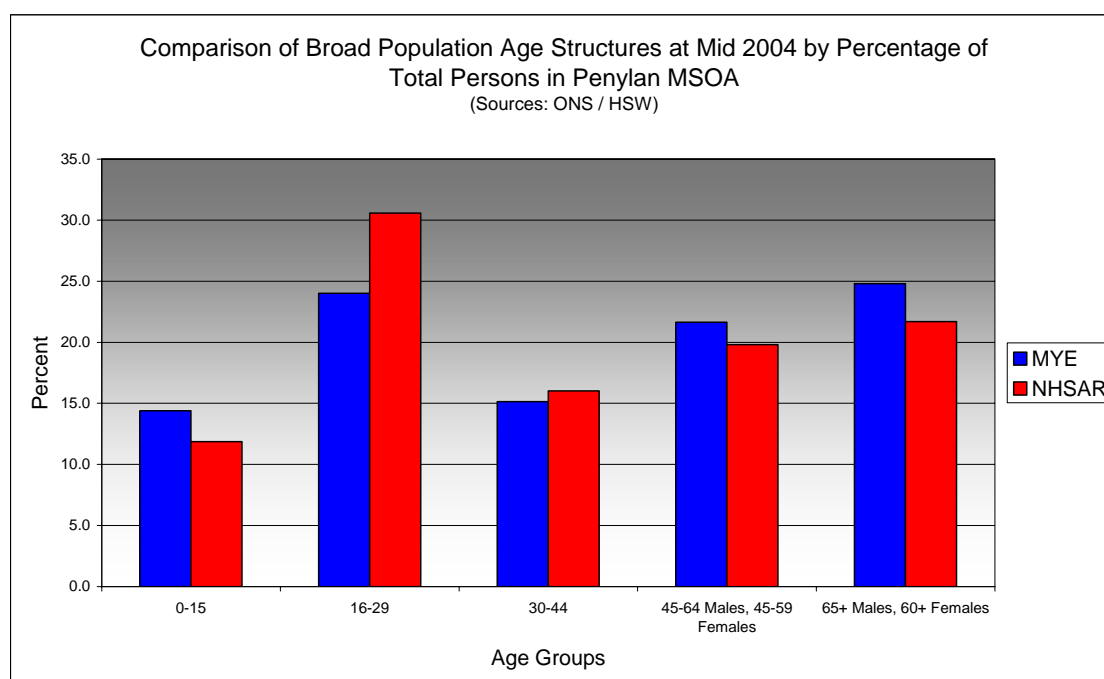
- In Penylan total NHSAR population at Mid 2004 was 20.8% (approximately 1,250 persons) higher than the experimental Mid Year Estimate.
- Total male NHSAR population was 33.6% higher, while total female population was 9.9% higher than the experimental Mid Year Estimate.
- NHSAR population counts showed the greatest variance from the Experimental MYEs in the following age groups: 25 to 29 years 129.0% higher and those aged 20 to 24 years 111.3% higher.
- Penylan is ranked 20th (MYE) and 31st (NHSAR) out of 47 MSOAs in Cardiff for it's total dependency ratio. The difference in ranks is significant and is explained by the much higher population count aged 15 to 64 recorded by the NHSAR.
- Within the Cardiff Central Locality Penylan is ranked 3rd (MYE & NHSAR) out of 11 MSOAs for it's total dependency ratio.
- Penylan is ranked 43rd (MYE) and 45th (NHSAR) out of 47 MSOAs in Cardiff for the total number of younger dependents aged 0 to 14.
- Within it's locality Penylan is ranked 7th (MYE) and 9th (NHSAR) out of 11 MSOAs for the total number of younger dependents aged 0 to 14.
- Penylan is ranked 7th (MYE) and 6th (NHSAR) out of 47 MSOAs for the total number of older dependents aged 65 plus.
- Within it's locality Penylan is ranked 2nd (MYE) and 1st (NHSAR) out of 11 MSOAs for the total number of older dependents aged 65 plus.
- The majority of dependent age groups (0 to 14 + 65 and over) are older dependents aged 65 and over, representing 62.5% (MYE) and 63.5% (NHSAR) of total dependents.

Dependency Ratios at Mid 2004 in Penylan MSOA (Sources: Derived from Data Supplied by ONS & HSW)		
	MYE	NHSAR
Dependents Aged 0 - 14	800	800
Dependents Aged 65 Plus	1,300	1,400
Total Dependents	2,100	2,200
Persons Aged 15 to 64	3,900	5,100
Total Persons	6,000	7,300
Penylan Dependency Ratio	0.55	0.44
Locality Dependency Ratio	0.33	0.30
Cardiff Dependency Ratio	0.47	0.43
Wales Dependency Ratio	0.57	0.52

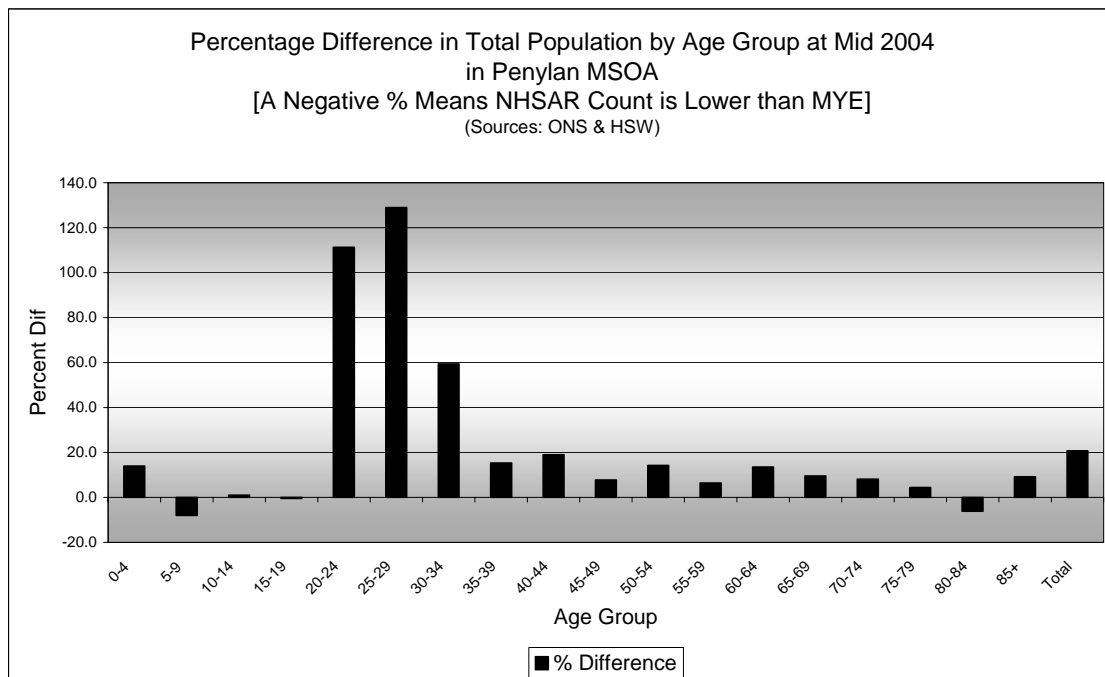
Broad Age Group Comparisons

Comparison of Population Sources by Broad Age Group for Mid 2004 in Penylan MSOA						
Penylan	0-15	16-29	30-44	45-64 Males, 45-59 Females	65+ Males, 60+ Females	All Ages
MYE	900	1,500	900	1,300	1,500	6,000
NHSAR	900	2,200	1,200	1,400	1,600	7,300
Difference #	-3	781	255	138	84	1,255
Difference %	-0.3	53.8	27.8	10.5	5.6	20.8

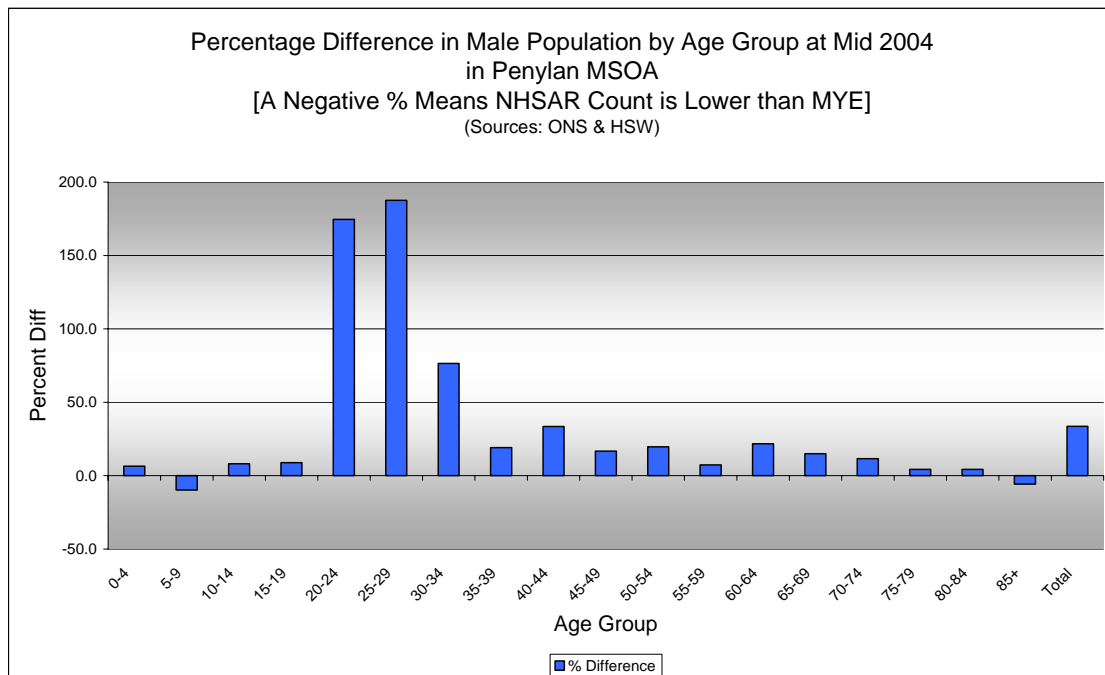
Comparison of Broad Population Age Structures for Mid 2004 by Percentage of Total Population in Penylan MSOA						
Penylan	0-15	16-29	30-44	45-64 Males, 45-59 Females	65+ Males, 60+ Females	All Ages
MYE	14.4	24.0	15.1	21.6	24.8	100.0
NHSAR	11.9	30.6	16.0	19.8	21.7	100.0



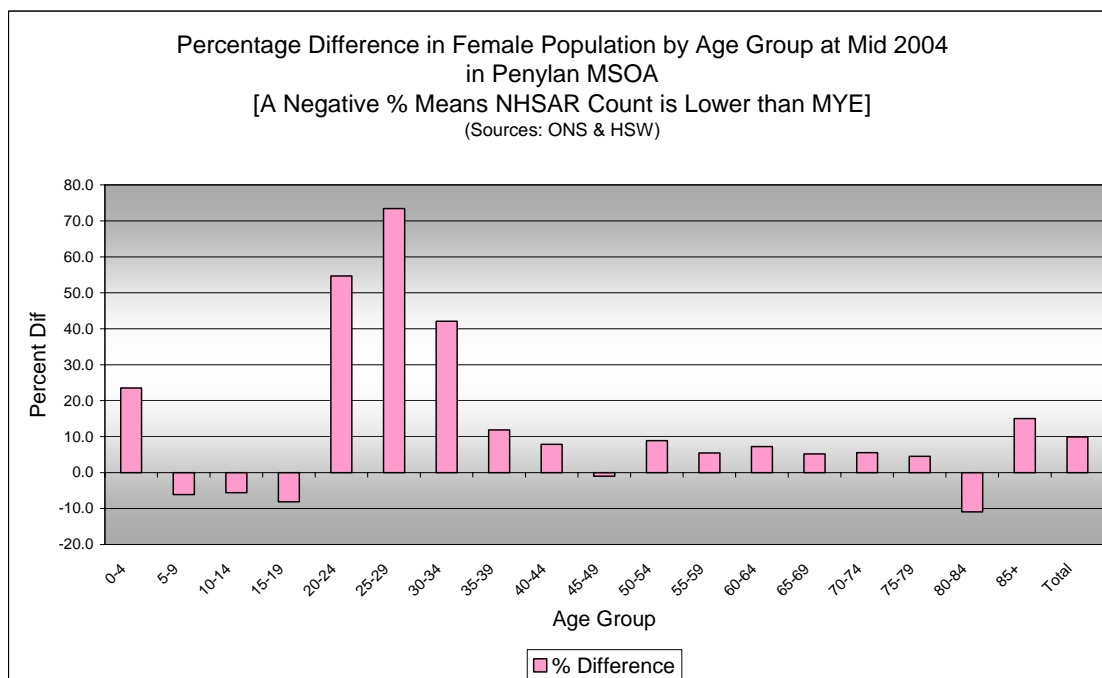
Quinary Age Group Comparisons – 2004 NHSAR Minus MYE



Comparison of Total Population by Age Group at Mid 2004 in Penylan MSOA [Difference = NHSAR Minus MYE] (Sources: ONS & HSW)				
Age	Persons (MYE)	Persons (NHSAR)	# Difference	% Difference
0-4	200	200	27	14.0
5-9	300	300	-24	-8.0
10-14	300	300	3	1.0
15-19	900	800	-4	-0.5
20-24	500	1,000	540	111.3
25-29	200	400	236	129.0
30-34	200	400	136	59.4
35-39	300	400	50	15.4
40-44	400	400	69	19.1
45-49	400	400	32	7.8
50-54	400	400	52	14.3
55-59	400	400	26	6.4
60-64	300	300	40	13.6
65-69	300	400	33	9.5
70-74	300	300	23	8.2
75-79	300	300	13	4.4
80-84	300	200	-14	-6.2
85+	200	200	17	9.2
Total	6,000	7,300	1,255	20.8



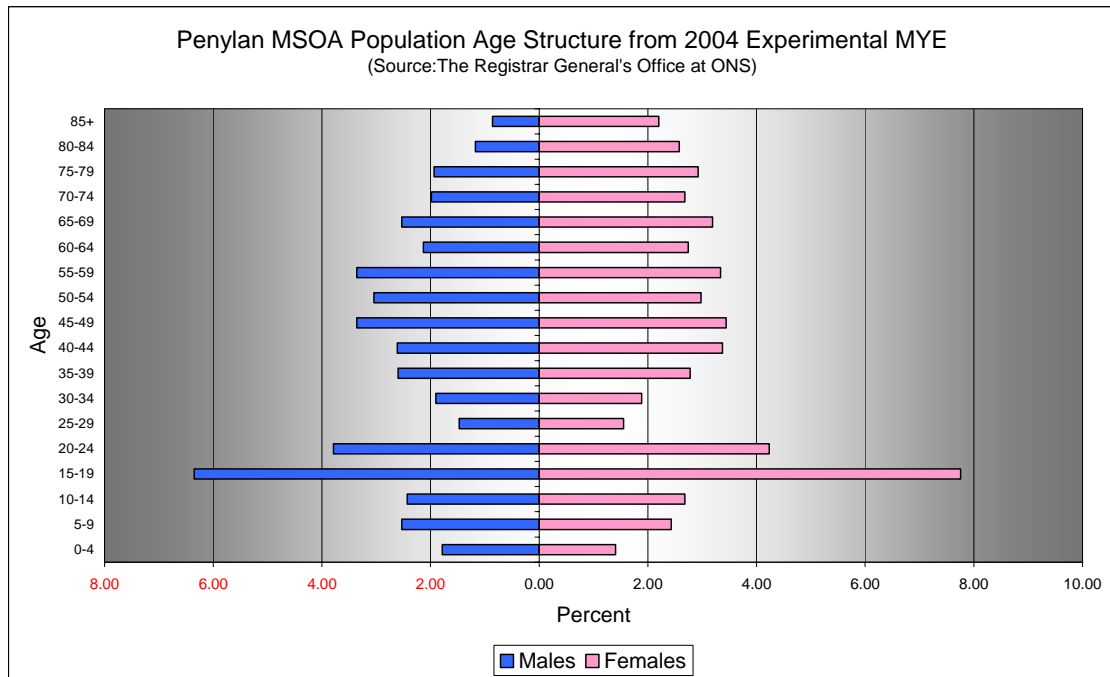
Comparison of Male Population by Age Group at Mid 2004 in Penylan MSOA [Difference = NHSAR Minus MYE] (Sources: ONS & HSW)				
Age	Males (MYE)	Males (NHSAR)	# Difference	% Difference
0-4	100	100	7	6.5
5-9	200	100	-15	-9.8
10-14	100	200	12	8.2
15-19	400	400	34	8.9
20-24	200	600	400	174.7
25-29	100	300	167	187.6
30-34	100	200	88	76.5
35-39	200	200	30	19.1
40-44	200	200	53	33.5
45-49	200	200	34	16.7
50-54	200	200	36	19.6
55-59	200	200	15	7.4
60-64	100	200	28	21.7
65-69	200	200	23	15.0
70-74	100	100	14	11.7
75-79	100	100	5	4.3
80-84	100	100	3	4.2
85+	100	50	-3	-5.8
Total	2,800	3,700	931	33.6



Comparison of Female Population by Age Group at Mid 2004 in Penylan MSOA
[Difference = NHSAR Minus MYE] (Sources: ONS & HSW)

Age	Females (MYE)	Females (NHSAR)	# Difference	% Difference
0-4	100	100	20	23.5
5-9	100	100	-9	-6.1
10-14	200	200	-9	-5.6
15-19	500	400	-38	-8.1
20-24	300	400	140	54.7
25-29	100	200	69	73.4
30-34	100	200	48	42.1
35-39	200	200	20	11.9
40-44	200	200	16	7.8
45-49	200	200	-2	-1.0
50-54	200	200	16	8.9
55-59	200	200	11	5.4
60-64	200	200	12	7.2
65-69	200	200	10	5.2
70-74	200	200	9	5.6
75-79	200	200	8	4.5
80-84	200	100	-17	-10.9
85+	100	200	20	15.0
Total	3,300	3,600	324	9.9

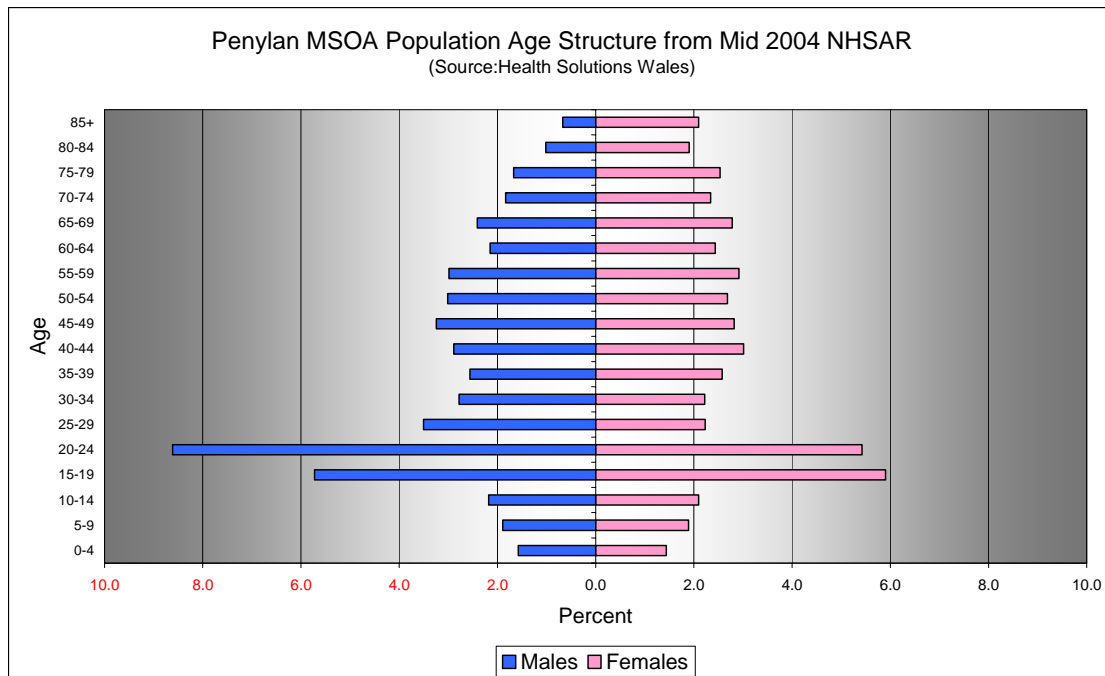
Quinary Population Age Structure - 2004 MYE



Penylan MSOA Population Age Structure 2004 MYE (Source: ONS)			
Age	Males	Females	Persons
0-4	100	100	200
5-9	200	100	300
10-14	100	200	300
15-19	400	500	900
20-24	200	300	500
25-29	100	100	200
30-34	100	100	200
35-39	200	200	300
40-44	200	200	400
45-49	200	200	400
50-54	200	200	400
55-59	200	200	400
60-64	100	200	300
65-69	200	200	300
70-74	100	200	300
75-79	100	200	300
80-84	100	200	300
85+	100	100	200
Total	2,800	3,300	6,000

Penylan MSOA Population Age Structure 2004 MYE - Percentage of total Persons (Source: ONS)			
Age	Males	Females	Persons
0-4	1.8	1.4	3.2
5-9	2.5	2.4	5.0
10-14	2.4	2.7	5.1
15-19	6.3	7.8	14.1
20-24	3.8	4.2	8.0
25-29	1.5	1.6	3.0
30-34	1.9	1.9	3.8
35-39	2.6	2.8	5.4
40-44	2.6	3.4	6.0
45-49	3.4	3.4	6.8
50-54	3.0	3.0	6.0
55-59	3.4	3.3	6.7
60-64	2.1	2.7	4.9
65-69	2.5	3.2	5.7
70-74	2.0	2.7	4.7
75-79	1.9	2.9	4.9
80-84	1.2	2.6	3.8
85+	0.9	2.2	3.1
Total	45.8	54.2	100.0

Quinary Population Age Structure Mid 2004 NHSAR



Penylan MSOA Population Age Structure - NHSAR Mid 2004 (Source: HSW)			
Age	Males	Females	Persons
0-4	100	100	200
5-9	100	100	300
10-14	200	200	300
15-19	400	400	800
20-24	600	400	1,000
25-29	300	200	400
30-34	200	200	400
35-39	200	200	400
40-44	200	200	400
45-49	200	200	400
50-54	200	200	400
55-59	200	200	400
60-64	200	200	300
65-69	200	200	400
70-74	100	200	300
75-79	100	200	300
80-84	100	100	200
85+	50	200	200
Total	3,700	3,600	7,300

Penylan MSOA Population Age Structure % of Total Persons - NHSAR Mid 2004 (Source: HSW)			
Age	Males	Females	Persons
0-4	1.6	1.4	3.0
5-9	1.9	1.9	3.8
10-14	2.2	2.1	4.3
15-19	5.7	5.9	11.6
20-24	8.6	5.4	14.0
25-29	3.5	2.2	5.7
30-34	2.8	2.2	5.0
35-39	2.6	2.6	5.1
40-44	2.9	3.0	5.9
45-49	3.2	2.8	6.1
50-54	3.0	2.7	5.7
55-59	3.0	2.9	5.9
60-64	2.1	2.4	4.6
65-69	2.4	2.8	5.2
70-74	1.8	2.3	4.2
75-79	1.7	2.5	4.2
80-84	1.0	1.9	2.9
85+	0.7	2.1	2.8
Total	50.7	49.3	100.0