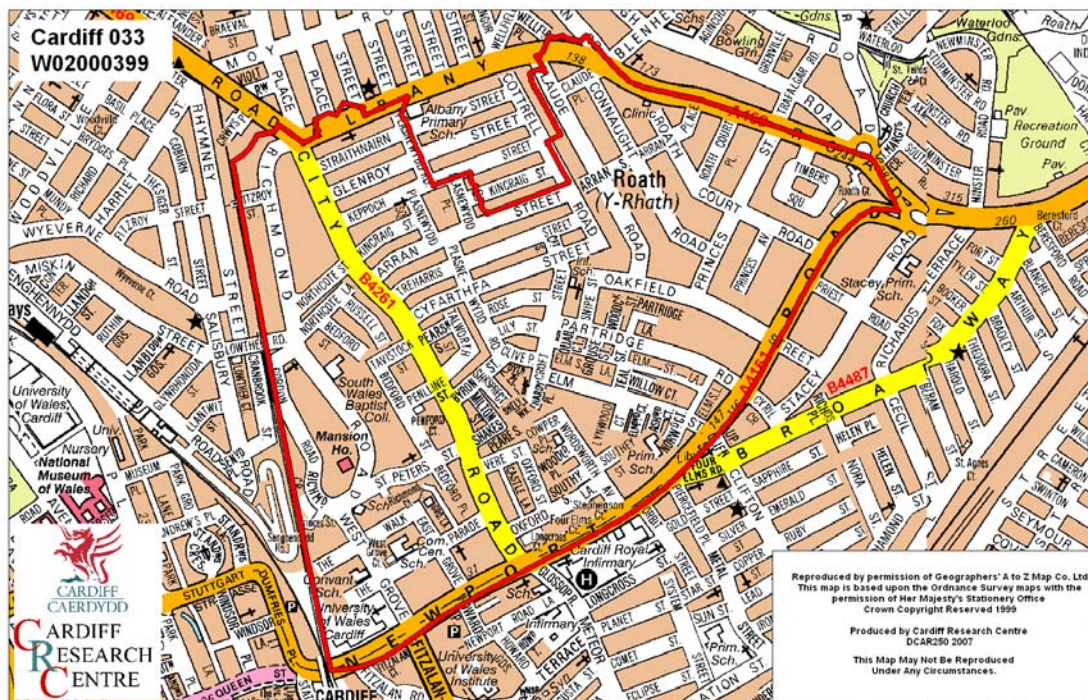


Plasnewydd Middle Super Output Area

A comparison of Population Age Structure's for Mid 2004 from the National Statistics experimental Mid Year Estimate and the National Health Service Administrative Records (NHSAR)

Figure: Plasnewydd MSOA (Cardiff Central Locality)



Disclosure Control: Due to a requirement to observe the Registrar General's disclosure control protocols for experimental and official Mid Year Estimates of population it has been necessary to round population figures provided in this profile to the nearest 100 persons. Due to the danger of disclosure by difference the NHSAR population figures in this brief have also been rounded to the nearest 100 persons. For both datasets, when the population estimate was less than 50 persons, the value of 50 has been used. However, it is important to note that all graphics and the percentages presented in this profile have been produced using raw un-rounded estimates. The difference between NHSAR and MYE population estimates are also presented here in their un-rounded raw format.

Summary Key Statistics

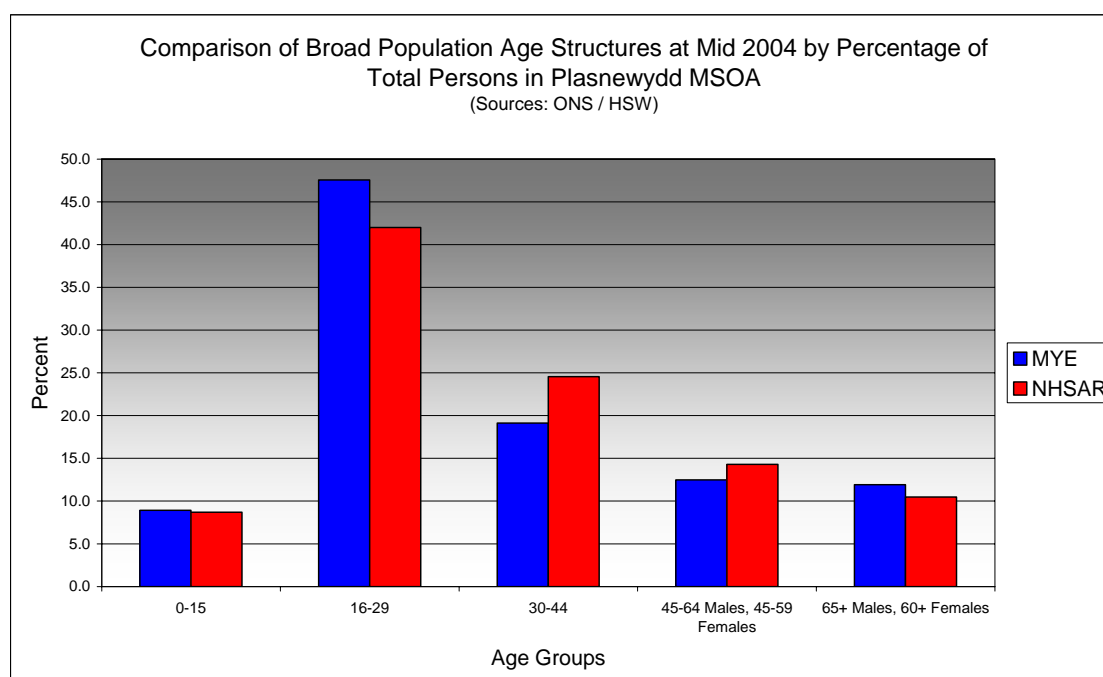
- In Plasnewydd total NHSAR population at Mid 2004 was 25.2% (approximately 1,250 persons) higher than the experimental Mid Year Estimate.
- Total male NHSAR population was 33.2% higher, while total female population was 16.8% higher than the experimental Mid Year Estimate.
- NHSAR population counts showed the greatest variance from the Experimental MYEs in the following age groups: 40 to 44 years 65.7% higher, those aged 30 to 34 years 59.6% higher and those aged 25 to 29 years 44.5% higher. It should be noted that for those aged 20 to 24 the NHSAR was 5.6% lower than the experimental MYE.
- Plasnewydd is ranked 43rd (MYE & NHSAR) out of 47 MSOAs in Cardiff for its total dependency ratio.
- Within the Cardiff Central Locality Plasnewydd is ranked 8th (MYE & NHSAR) out of 11 MSOAs for its total dependency ratio.
- Plasnewydd is ranked 45th (MYE) and 40th (NHSAR) out of 47 MSOAs in Cardiff for the total number of younger dependents aged 0 to 14.
- Within its locality Plasnewydd is ranked 9th (MYE) and 7th (NHSAR) out of 11 MSOAs for the total number of younger dependents aged 0 to 14 in the locality.
- Plasnewydd is ranked 19th (MYE & NHSAR) out of 47 MSOAs for the total number of older dependents aged 65 plus.
- Within its locality Plasnewydd is ranked 4th (MYE & NHSAR) out of 11 MSOAs for the total number of older dependents aged 65 plus.
- The majority of dependent age groups (0 to 14 + 65 and over) are older dependents aged 65 and over, representing 56.8% (MYE) and 54.0% (NHSAR) of total dependents.

Dependency Ratios at Mid 2004 in Plasnewydd MSOA (Sources: Derived from Data Supplied by ONS & HSW)		
	MYE	NHSAR
Dependents Aged 0 - 14	700	900
Dependents Aged 65 Plus	1,000	1,100
Total Dependents	1,700	2,000
Persons Aged 15 to 64	7,300	9,300
Total Persons	9,000	11,300
Plasnewydd Dependency Ratio	0.23	0.21
Locality Dependency Ratio	0.33	0.30
Cardiff Dependency Ratio	0.47	0.43
Wales Dependency Ratio	0.57	0.52

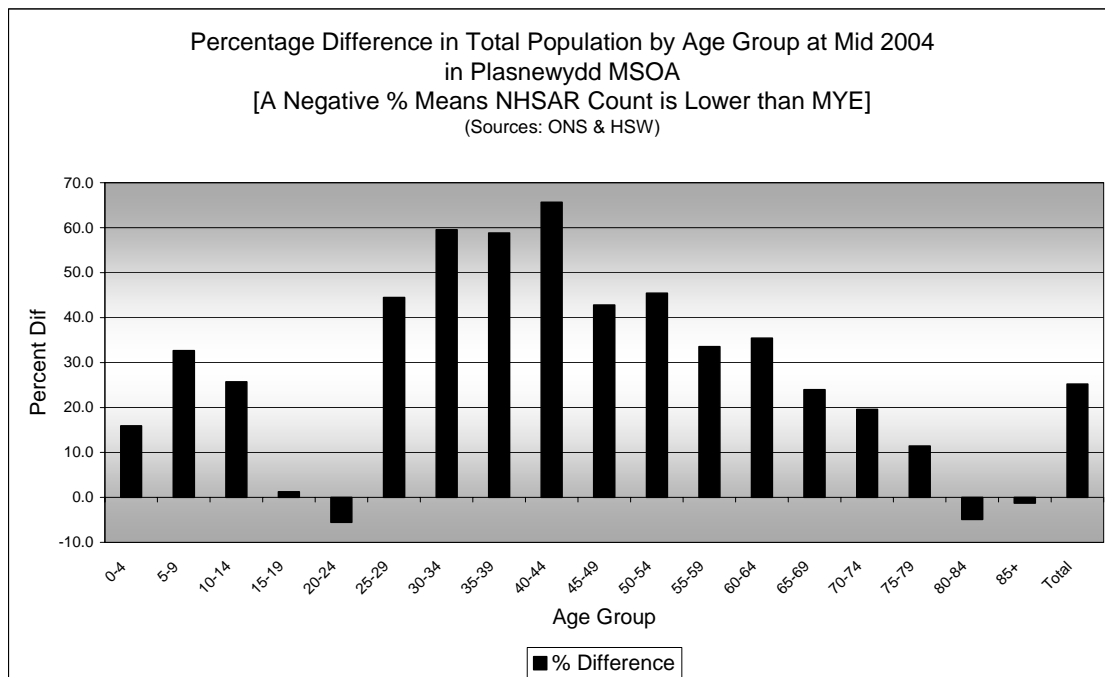
Broad Age Group Comparisons

Comparison of Population Sources by Broad Age Group for Mid 2004 in Plasnewydd MSOA						
	0-15	16-29	30-44	45-64 Males, 45-59 Females	65+ Males, 60+ Females	All Ages
MYE	800	4,300	1,700	1,100	1,100	9,000
NHSAR	1,000	4,700	2,800	1,600	1,200	11,300
Difference #	177	452	1,046	487	108	2,270
Difference %	22.0	10.6	60.8	43.3	10.1	25.2

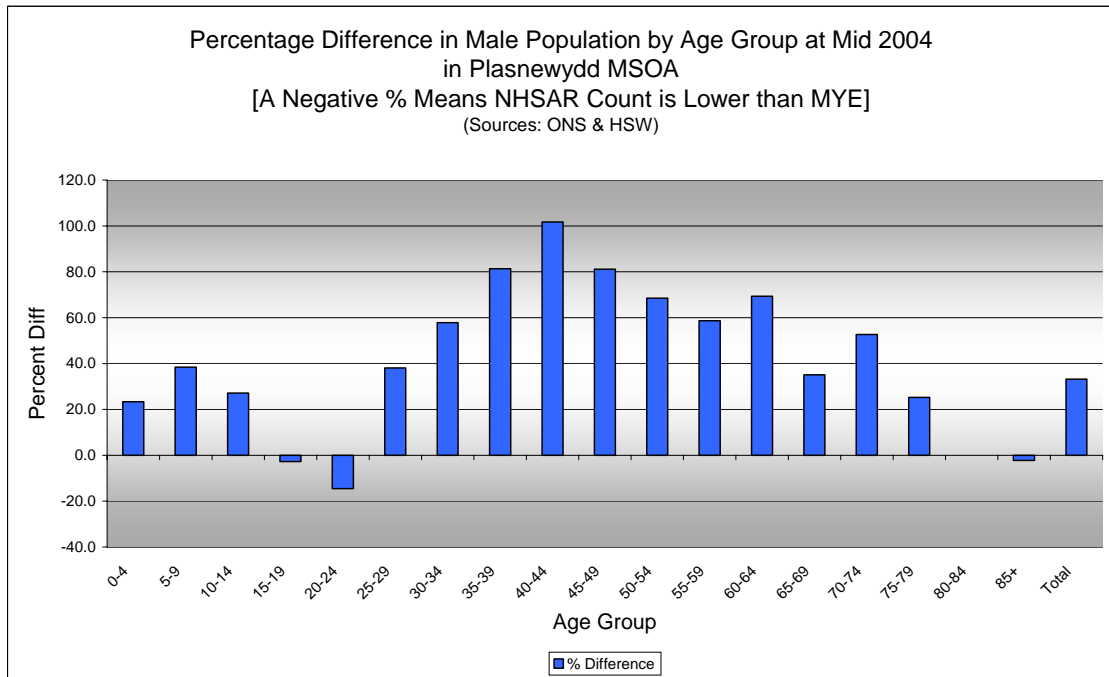
Comparison of Broad Population Age Structures for Mid 2004 by Percentage of Total Population in Plasnewydd MSOA						
	0-15	16-29	30-44	45-64 Males, 45-59 Females	65+ Males, 60+ Females	All Ages
MYE	8.9	47.6	19.1	12.5	11.9	100.0
NHSAR	8.7	42.0	24.5	14.3	10.5	100.0



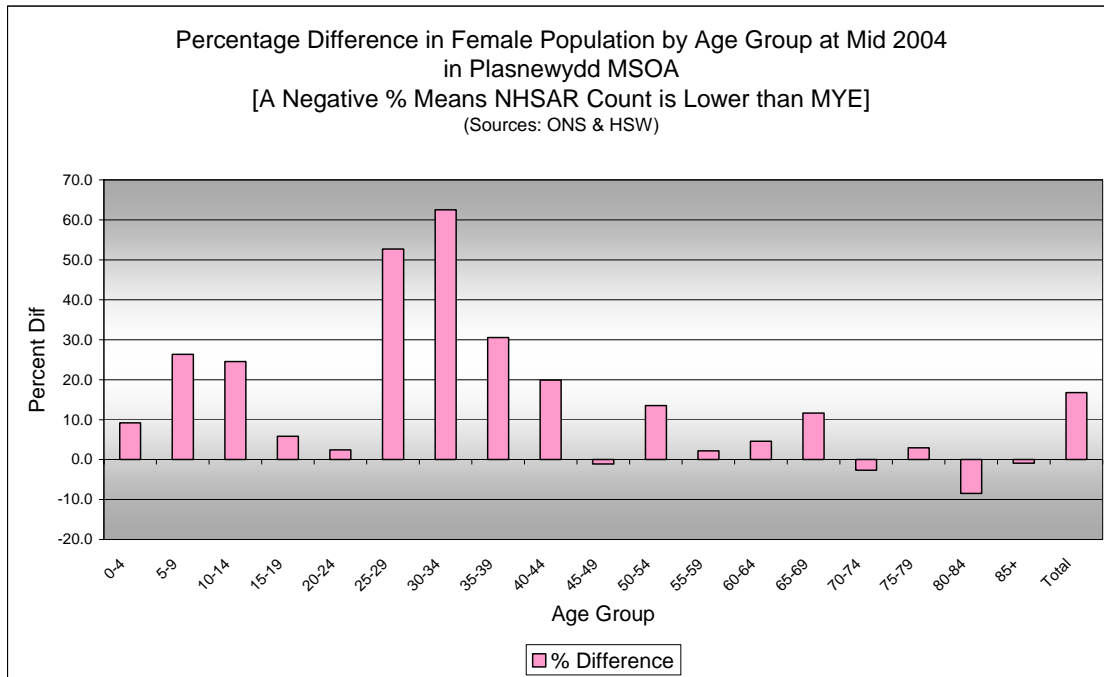
Quinary Age Group Comparisons – 2004 NHSAR Minus MYE



Comparison of Total Population by Age Group at Mid 2004 in Plasnewydd MSOA [Difference = NHSAR Minus MYE] (Sources: ONS & HSW)				
Age	Persons (MYE)	Persons (NHSAR)	# Difference	% Difference
0-4	300	300	46	15.9
5-9	200	300	78	32.6
10-14	200	300	53	25.7
15-19	500	500	6	1.3
20-24	2,600	2,400	-142	-5.6
25-29	1,300	1,900	588	44.5
30-34	700	1,200	442	59.6
35-39	600	900	334	58.8
40-44	400	700	270	65.7
45-49	400	600	170	42.8
50-54	300	500	144	45.4
55-59	300	400	105	33.5
60-64	200	300	73	35.4
65-69	200	300	52	24.0
70-74	200	200	37	19.6
75-79	200	200	25	11.4
80-84	200	200	-9	-4.9
85+	200	200	-2	-1.3
Total	9,000	11,300	2,270	25.2



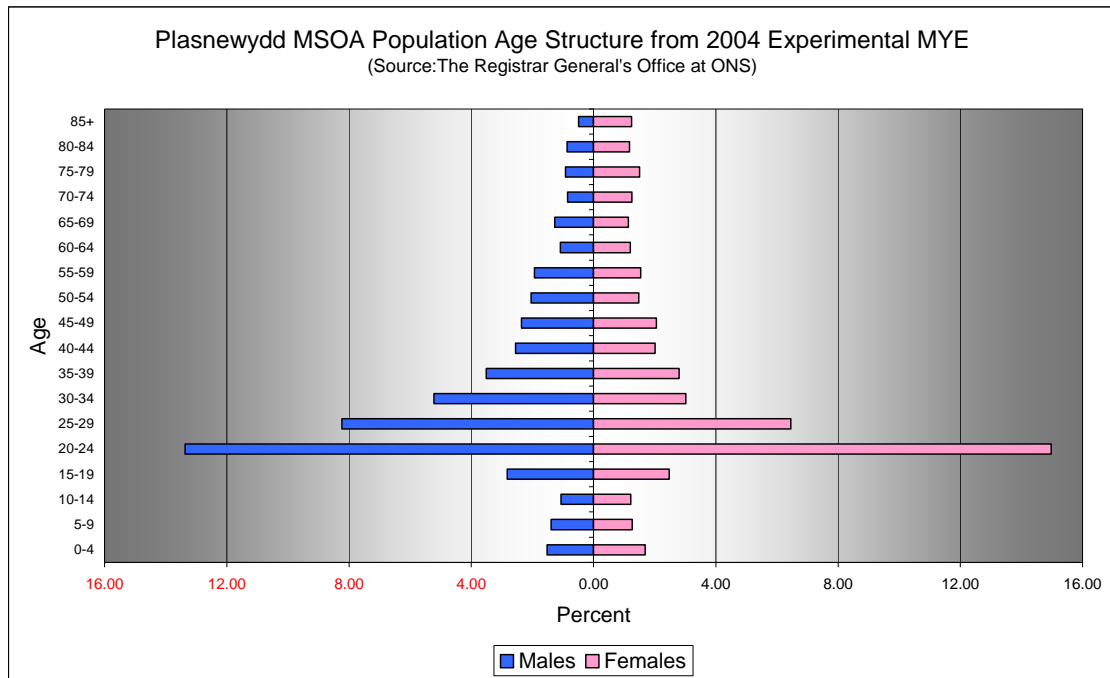
Comparison of Male Population by Age Group at Mid 2004 in Plasnewydd MSOA [Difference = NHSAR Minus MYE] (Sources: ONS & HSW)				
Age	Males (MYE)	Males (NHSAR)	# Difference	% Difference
0-4	100	200	32	23.4
5-9	100	200	48	38.4
10-14	100	100	26	27.1
15-19	300	200	-7	-2.8
20-24	1,200	1,000	-175	-14.5
25-29	700	1,000	282	38.1
30-34	500	700	272	57.9
35-39	300	600	257	81.3
40-44	200	500	234	101.7
45-49	200	400	172	81.1
50-54	200	300	126	68.5
55-59	200	300	102	58.6
60-64	100	200	68	69.4
65-69	100	200	40	35.1
70-74	100	100	40	52.6
75-79	100	100	21	25.3
80-84	100	100	0	0.0
85+	50	50	-1	-2.3
Total	4,600	6,200	1,537	33.2



Comparison of Female Population by Age Group at Mid 2004 in Plasnewydd MSOA
[Difference = NHSAR Minus MYE] (Sources: ONS & HSW)

Age	Females (MYE)	Females (NHSAR)	# Difference	% Difference
0-4	200	200	14	9.2
5-9	100	100	30	26.3
10-14	100	100	27	24.5
15-19	200	200	13	5.8
20-24	1,300	1,400	33	2.4
25-29	600	900	306	52.7
30-34	300	400	170	62.5
35-39	300	300	77	30.6
40-44	200	200	36	19.9
45-49	200	200	-2	-1.1
50-54	100	200	18	13.5
55-59	100	100	3	2.2
60-64	100	100	5	4.6
65-69	100	100	12	11.7
70-74	100	100	-3	-2.7
75-79	100	100	4	2.9
80-84	100	100	-9	-8.5
85+	100	100	-1	-0.9
Total	4,400	5,100	733	16.8

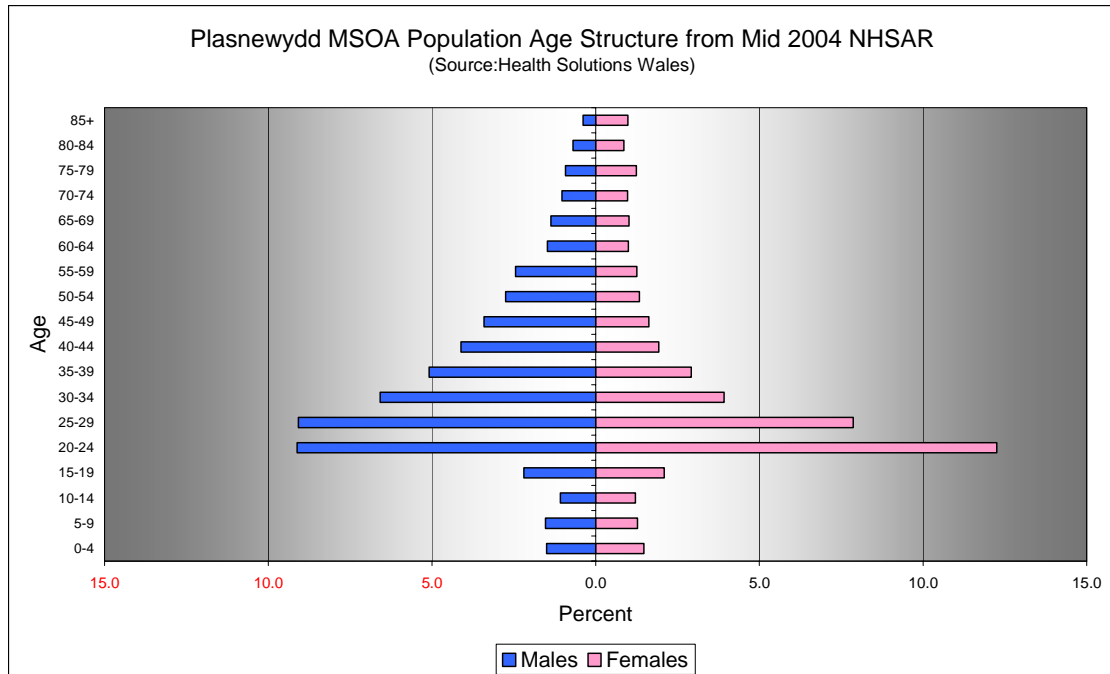
Quinary Population Age Structure - 2004 MYE



Plasnewydd MSOA Population Age Structure 2004 MYE (Source: ONS)			
Age	Males	Females	Persons
0-4	100	200	300
5-9	100	100	200
10-14	100	100	200
15-19	300	200	500
20-24	1,200	1,300	2,600
25-29	700	600	1,300
30-34	500	300	700
35-39	300	300	600
40-44	200	200	400
45-49	200	200	400
50-54	200	100	300
55-59	200	100	300
60-64	100	100	200
65-69	100	100	200
70-74	100	100	200
75-79	100	100	200
80-84	100	100	200
85+	50	100	200
Total	4,600	4,400	9,000

Plasnewydd MSOA Population Age Structure 2004 MYE - Percentage of total Persons (Source: ONS)			
Age	Males	Females	Persons
0-4	1.5	1.7	3.2
5-9	1.4	1.3	2.7
10-14	1.1	1.2	2.3
15-19	2.8	2.5	5.3
20-24	13.4	15.0	28.3
25-29	8.2	6.5	14.7
30-34	5.2	3.0	8.2
35-39	3.5	2.8	6.3
40-44	2.6	2.0	4.6
45-49	2.4	2.1	4.4
50-54	2.0	1.5	3.5
55-59	1.9	1.5	3.5
60-64	1.1	1.2	2.3
65-69	1.3	1.1	2.4
70-74	0.8	1.3	2.1
75-79	0.9	1.5	2.4
80-84	0.9	1.2	2.0
85+	0.5	1.2	1.7
Total	51.5	48.5	100.0

Quinary Population Age Structure Mid 2004 NHSAR



Plasnewydd MSOA Population Age Structure - NHSAR Mid 2004 (Source: HSW)			
Age	Males	Females	Persons
0-4	200	200	300
5-9	200	100	300
10-14	100	100	300
15-19	200	200	500
20-24	1,000	1,400	2,400
25-29	1,000	900	1,900
30-34	700	400	1,200
35-39	600	300	900
40-44	500	200	700
45-49	400	200	600
50-54	300	200	500
55-59	300	100	400
60-64	200	100	300
65-69	200	100	300
70-74	100	100	200
75-79	100	100	200
80-84	100	100	200
85+	50	100	200
Total	6,200	5,100	11,300

Plasnewydd MSOA Population Age Structure % of Total Persons - NHSAR Mid 2004 (Source: HSW)			
Age	Males	Females	Persons
0-4	1.5	1.5	3.0
5-9	1.5	1.3	2.8
10-14	1.1	1.2	2.3
15-19	2.2	2.1	4.3
20-24	9.1	12.3	21.4
25-29	9.1	7.9	16.9
30-34	6.6	3.9	10.5
35-39	5.1	2.9	8.0
40-44	4.1	1.9	6.0
45-49	3.4	1.6	5.0
50-54	2.7	1.3	4.1
55-59	2.4	1.3	3.7
60-64	1.5	1.0	2.5
65-69	1.4	1.0	2.4
70-74	1.0	1.0	2.0
75-79	0.9	1.2	2.2
80-84	0.7	0.9	1.6
85+	0.4	1.0	1.4
Total	54.8	45.2	100.0