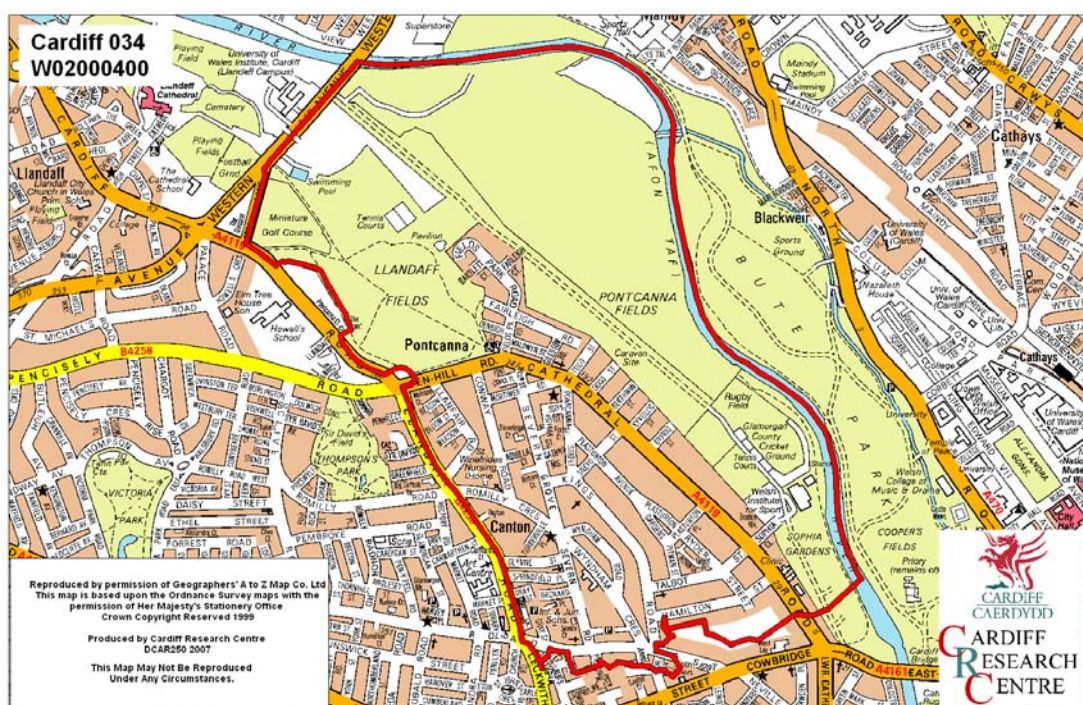


# Pontcanna Middle Super Output Area

A comparison of Population Age Structure's for Mid 2004 from the National Statistics experimental Mid Year Estimate and the National Health Service Administrative Records (NHSAR)

Figure: Pontcanna MSA (Cardiff West Locality)



**Disclosure Control:** Due to a requirement to observe the Registrar General's disclosure control protocols for experimental and official Mid Year Estimates of population it has been necessary to round population figures provided in this profile to the nearest 100 persons. Due to the danger of disclosure by difference the NHSAR population figures in this brief have also been rounded to the nearest 100 persons. For both datasets, when the population estimate was less than 50 persons, the value of 50 has been used. However, it is important to note that all graphics and the percentages presented in this profile have been produced using raw un-rounded estimates. The difference between NHSAR and MYE population estimates are also presented here in their un-rounded raw format.

## Summary Key Statistics

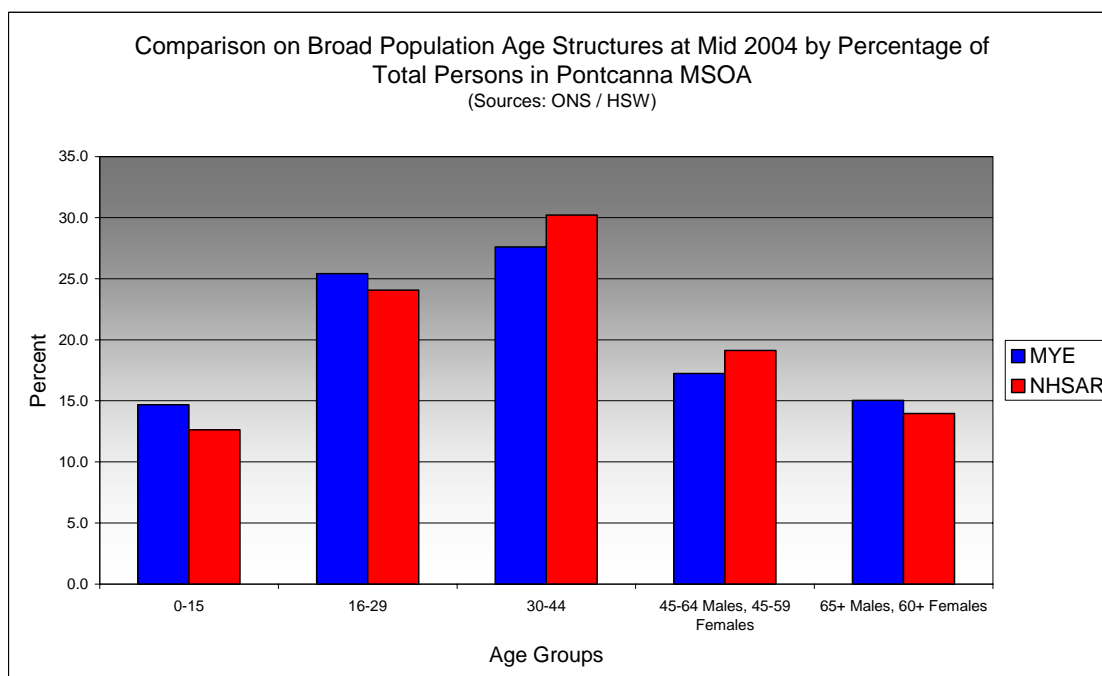
- In Pontcanna total NHSAR population at Mid 2004 was 16.8% (approximately 1,000 persons) higher than the experimental Mid Year Estimate.
- Total male NHSAR population was 23.7% higher, while total female population was 10.5% higher than the experimental Mid Year Estimate.
- NHSAR population counts showed the greatest variance from the Experimental MYEs in the following age groups: 45 to 49 years 35.3% higher and those aged 40 to 44 years 31.4% higher.
- Pontcanna is ranked 40<sup>th</sup> (MYE) and 42<sup>nd</sup> (NHSAR) out of 47 MSOAs in Cardiff for it's total dependency ratio.
- Within the Cardiff West Locality Pontcanna is ranked 13<sup>th</sup> (MYE & NHSAR) out of 13 MSOAs for it's total dependency ratio.
- Pontcanna is ranked 42<sup>nd</sup> (MYE) and 43<sup>rd</sup> (NHSAR) out of 47 MSOAs in Cardiff for the total number of younger dependents aged 0 to 14.
- Within it's locality Pontcanna is ranked 13<sup>th</sup> (MYE & NHSAR) out of 13 MSOAs for the total number of younger dependents aged 0 to 14 in the locality.
- Pontcanna is ranked 30<sup>th</sup> (MYE) and 32<sup>nd</sup> (NHSAR) out of 47 MSOAs for the total number of older dependents aged 65 plus.
- Within it's locality Pontcanna is ranked 11<sup>th</sup> (MYE) and 12<sup>th</sup> (NHSAR) out of 13 MSOAs for the total number of older dependents aged 65 plus.
- A small majority of dependent age groups (0 to 14 + 65 and over) are younger dependents aged 0 to 14, representing 51.3% of the MYE population, however they represent only 49.1% of the NHSAR total dependent population.

<b>Dependency Ratios at Mid 2004 in Pontcanna MSOA</b> (Sources: Derived from Data Supplied by ONS & HSW)		
	<b>MYE</b>	<b>NHSAR</b>
<b>Dependents Aged 0 - 14</b>	800	800
<b>Dependents Aged 65 Plus</b>	800	900
<b>Total Dependents</b>	1,600	1,700
<b>Persons Aged 15 to 64</b>	4,300	5,200
<b>Total Persons</b>	5,900	6,800
<b>Pontcanna Dependency Ratio</b>	0.37	0.32
<b>Locality Dependency Ratio</b>	0.52	0.47
<b>Cardiff Dependency Ratio</b>	0.47	0.43
<b>Wales Dependency Ratio</b>	0.57	0.52

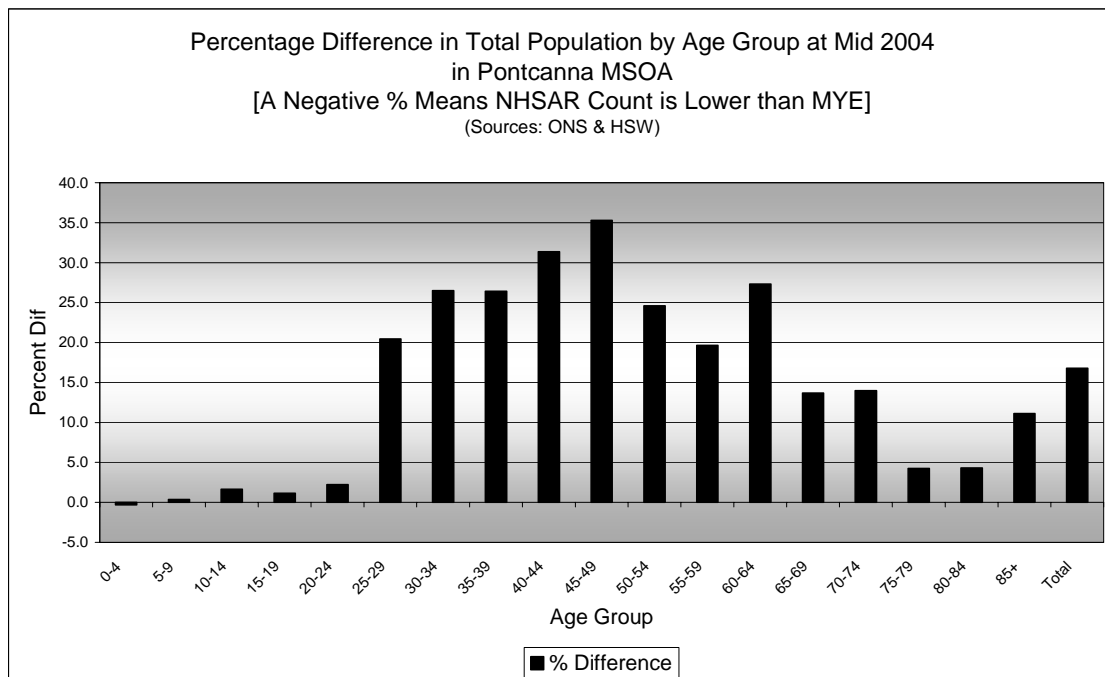
## Broad Age Group Comparisons

Comparison of Population Sources by Broad Age Group for Mid 2004 in Pontcanna MSOA						
	0-15	16-29	30-44	45-64 Males, 45-59 Females	65+ Males, 60+ Females	All Ages
<b>MYE</b>	900	1,500	1,600	1,000	900	5,900
<b>NHSAR</b>	900	1,600	2,100	1,300	1,000	6,800
<b>Difference #</b>	3	158	449	299	75	984
<b>Difference %</b>	0.3	10.6	27.8	29.6	8.5	16.8

Comparison of Broad Population Age Structures for Mid 2004 by Percentage of Total Population in Pontcanna MSOA						
	0-15	16-29	30-44	45-64 Males, 45-59 Females	65+ Males, 60+ Females	All Ages
<b>MYE</b>	14.7	25.4	27.6	17.2	15.0	100.0
<b>NHSAR</b>	12.6	24.1	30.2	19.1	14.0	100.0

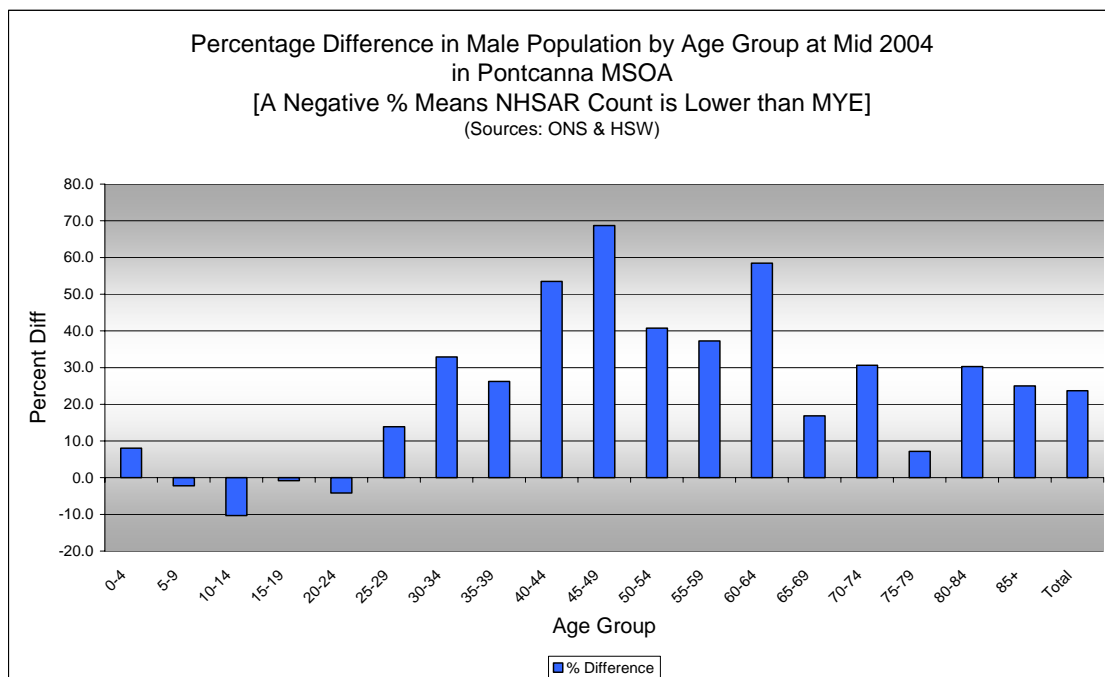


## Quinary Age Group Comparisons – 2004 NHSAR Minus MYE



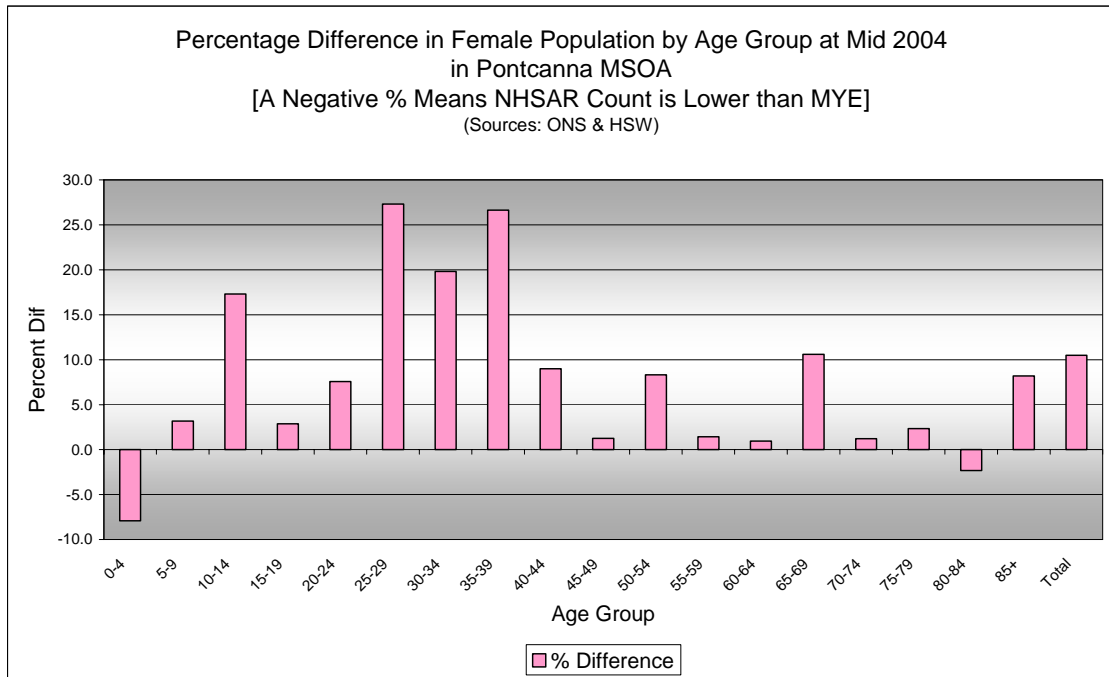
**Comparison of Total Population by Age Group at Mid 2004 in Pontcanna MSOA**  
[Difference = NHSAR Minus MYE] (Sources: ONS & HSW)

Age	Persons (MYE)	Persons (NHSAR)	# Difference	% Difference
0-4	300	300	-1	-0.3
5-9	300	300	1	0.4
10-14	200	200	4	1.7
15-19	300	300	3	1.1
20-24	600	600	13	2.2
25-29	700	800	141	20.5
30-34	600	800	169	26.5
35-39	600	700	147	26.4
40-44	400	600	133	31.4
45-49	300	400	114	35.3
50-54	300	400	77	24.6
55-59	300	300	56	19.6
60-64	200	200	53	27.3
65-69	200	200	23	13.7
70-74	100	200	20	14.0
75-79	100	100	6	4.3
80-84	200	200	7	4.3
85+	200	200	18	11.1
<b>Total</b>	<b>5,900</b>	<b>6,800</b>	<b>984</b>	<b>16.8</b>



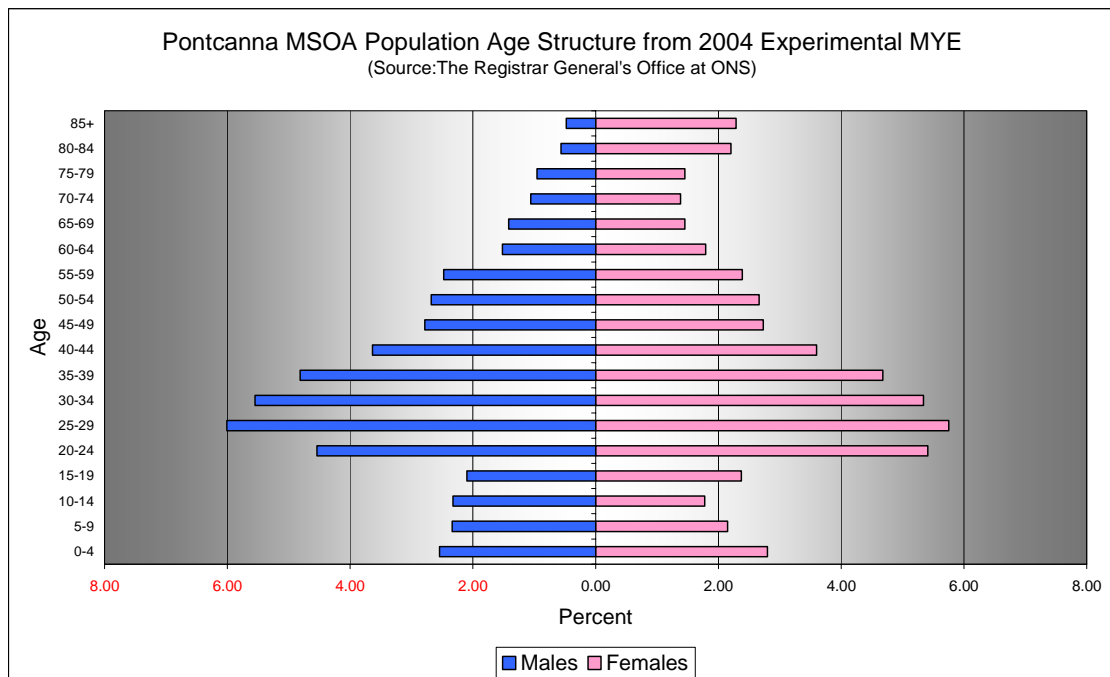
**Comparison of Male Population by Age Group at Mid 2004 in Pontcanna MSOA**  
[Difference = NHSAR Minus MYE] (Sources: ONS & HSW)

Age	Males (MYE)	Males (NHSAR)	# Difference	% Difference
0-4	100	200	12	8.1
5-9	100	100	-3	-2.2
10-14	100	100	-14	-10.3
15-19	100	100	-1	-0.8
20-24	200	300	-11	-4.1
25-29	300	400	49	13.9
30-34	300	400	107	32.9
35-39	300	400	74	26.2
40-44	200	300	114	53.5
45-49	200	300	112	68.7
50-54	200	200	64	40.8
55-59	100	200	54	37.2
60-64	100	100	52	58.4
65-69	100	100	14	16.9
70-74	100	100	19	30.6
75-79	100	100	4	7.1
80-84	50	50	10	30.3
85+	50	50	7	25.0
<b>Total</b>	<b>2,800</b>	<b>3,500</b>	<b>663</b>	<b>23.7</b>



<b>Comparison of Female Population by Age Group at Mid 2004 in Pontcanna MSOA</b> [Difference = NHSAR Minus MYE] (Sources: ONS & HSW)				
Age	Females (MYE)	Females (NHSAR)	# Difference	% Difference
0-4	200	200	-13	-7.9
5-9	100	100	4	3.2
10-14	100	100	18	17.3
15-19	100	100	4	2.9
20-24	300	300	24	7.6
25-29	300	400	92	27.3
30-34	300	400	62	19.8
35-39	300	300	73	26.6
40-44	200	200	19	9.0
45-49	200	200	2	1.3
50-54	200	200	13	8.3
55-59	100	100	2	1.4
60-64	100	100	1	1.0
65-69	100	100	9	10.6
70-74	100	100	1	1.2
75-79	100	100	2	2.4
80-84	100	100	-3	-2.3
85+	100	100	11	8.2
<b>Total</b>	<b>3,100</b>	<b>3,400</b>	<b>321</b>	<b>10.5</b>

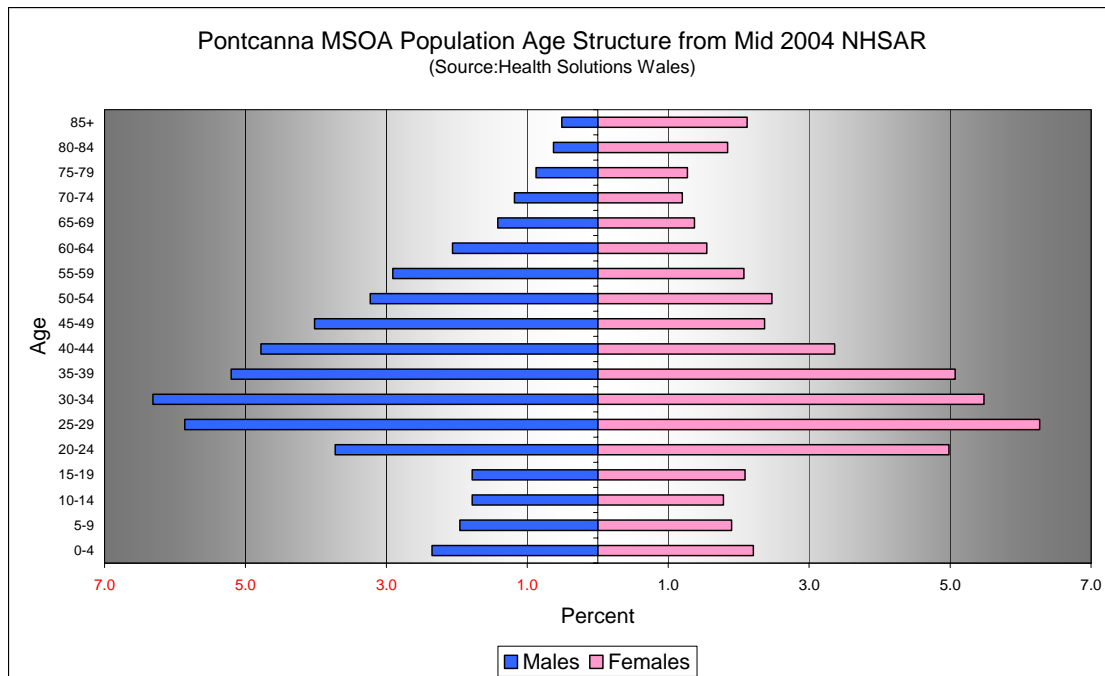
## Quinary Population Age Structure - 2004 MYE



Pontcanna MSOA Population Age Structure 2004 MYE (Source: ONS)			
Age	Males	Females	Persons
0-4	100	200	300
5-9	100	100	300
10-14	100	100	200
15-19	100	100	300
20-24	200	300	600
25-29	300	300	700
30-34	300	300	600
35-39	300	300	600
40-44	200	200	400
45-49	200	200	300
50-54	200	200	300
55-59	100	100	300
60-64	100	100	200
65-69	100	100	200
70-74	100	100	100
75-79	100	100	100
80-84	50	100	200
85+	50	100	200
<b>Total</b>	<b>2,800</b>	<b>3,100</b>	<b>5,900</b>

Pontcanna MSOA Population Age Structure 2004 MYE - Percentage of total Persons (Source: ONS)			
Age	Males	Females	Persons
0-4	2.5	2.8	5.3
5-9	2.3	2.2	4.5
10-14	2.3	1.8	4.1
15-19	2.1	2.4	4.5
20-24	4.5	5.4	10.0
25-29	6.0	5.8	11.8
30-34	5.5	5.3	10.9
35-39	4.8	4.7	9.5
40-44	3.6	3.6	7.2
45-49	2.8	2.7	5.5
50-54	2.7	2.7	5.3
55-59	2.5	2.4	4.9
60-64	1.5	1.8	3.3
65-69	1.4	1.5	2.9
70-74	1.1	1.4	2.4
75-79	1.0	1.5	2.4
80-84	0.6	2.2	2.8
85+	0.5	2.3	2.8
<b>Total</b>	<b>47.8</b>	<b>52.2</b>	<b>100.0</b>

## Quinary Population Age Structure Mid 2004 NHSAR



Pontcanna MSOA Population Age Structure - NHSAR Mid 2004 (Source: HSW)			
Age	Males	Females	Persons
0-4	200	200	300
5-9	100	100	300
10-14	100	100	200
15-19	100	100	300
20-24	300	300	600
25-29	400	400	800
30-34	400	400	800
35-39	400	300	700
40-44	300	200	600
45-49	300	200	400
50-54	200	200	400
55-59	200	100	300
60-64	100	100	200
65-69	100	100	200
70-74	100	100	200
75-79	100	100	100
80-84	50	100	200
85+	50	100	200
<b>Total</b>	<b>3,500</b>	<b>3,400</b>	<b>6,800</b>

Pontcanna MSOA Population Age Structure % of Total Persons - NHSAR Mid 2004 (Source: HSW)			
Age	Males	Females	Persons
0-4	2.4	2.2	4.6
5-9	2.0	1.9	3.9
10-14	1.8	1.8	3.6
15-19	1.8	2.1	3.9
20-24	3.7	5.0	8.7
25-29	5.9	6.3	12.1
30-34	6.3	5.5	11.8
35-39	5.2	5.1	10.3
40-44	4.8	3.4	8.1
45-49	4.0	2.4	6.4
50-54	3.2	2.5	5.7
55-59	2.9	2.1	5.0
60-64	2.1	1.5	3.6
65-69	1.4	1.4	2.8
70-74	1.2	1.2	2.4
75-79	0.9	1.3	2.1
80-84	0.6	1.8	2.5
85+	0.5	2.1	2.6
<b>Total</b>	<b>50.6</b>	<b>49.4</b>	<b>100.0</b>