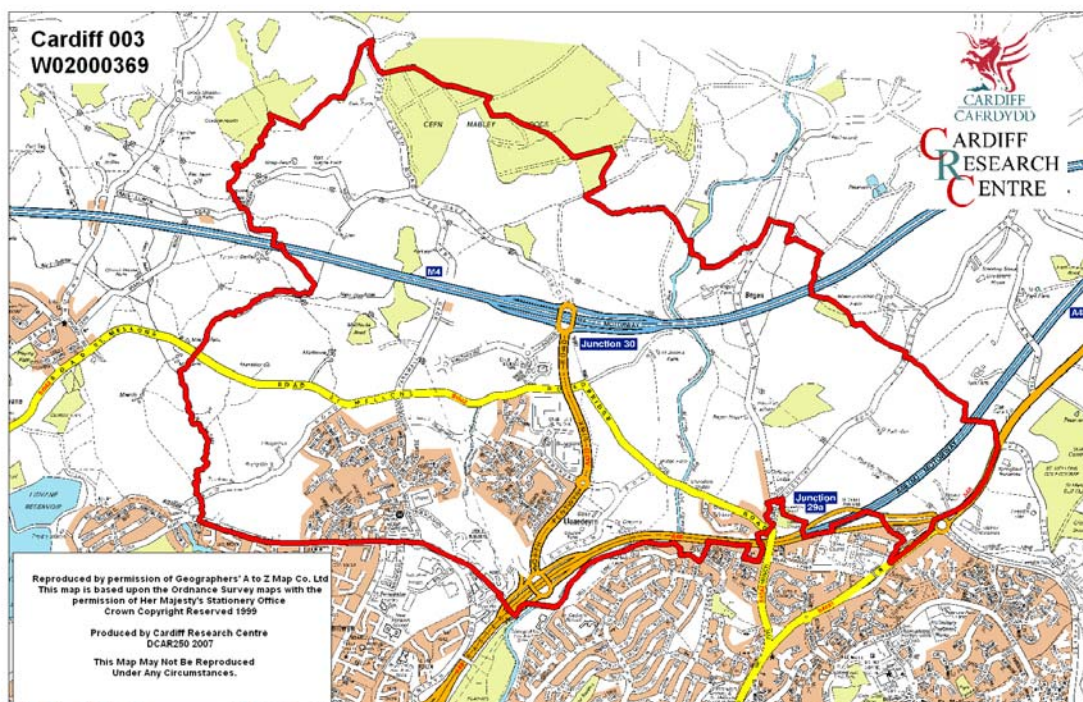


Pontprennau Middle Super Output Area

A comparison of Population Age Structure's for Mid 2004 from the National Statistics experimental Mid Year Estimate and the National Health Service Administrative Records (NHSAR)

Figure: Pontprennau MSOA (Cardiff North Locality)



Disclosure Control: Due to a requirement to observe the Registrar General's disclosure control protocols for experimental and official Mid Year Estimates of population it has been necessary to round population figures provided in this profile to the nearest 100 persons. Due to the danger of disclosure by difference the NHSAR population figures in this brief have also been rounded to the nearest 100 persons. For both datasets, when the population estimate was less than 50 persons, the value of 50 has been used. However, it is important to note that all graphics and the percentages presented in this profile have been produced using raw un-rounded estimates. The difference between NHSAR and MYE population estimates are also presented here in their un-rounded raw format.

Summary Key Statistics

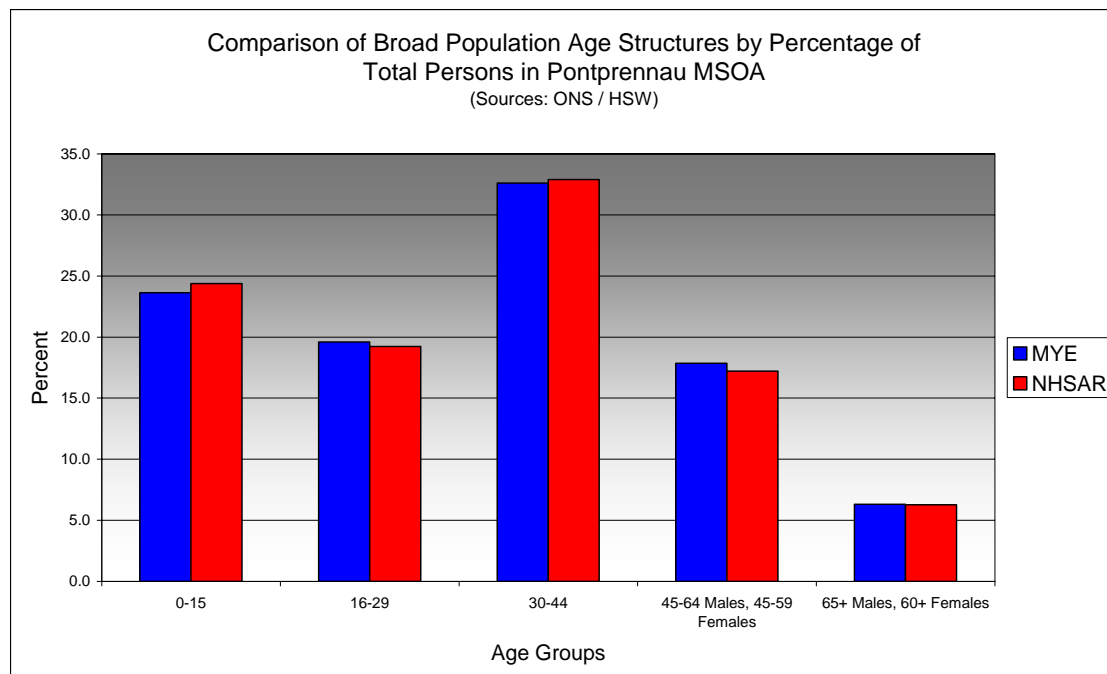
- In Pontprennau total NHSAR population at Mid 2004 was 6.5% (approximately 500 persons) **lower** than the experimental Mid Year Estimate. Pontprennau is one of only two MSOAs in Cardiff where the NHSAR count is lower than experimental MYEs, the other area is Thornhill.
- Total male NHSAR population was 8.9% **lower**, while total female population was 4.1% **lower** than the experimental Mid Year Estimate.
- NHSAR population counts showed the greatest variance from the Experimental MYEs in the following age groups: 45 to 49 years 15.9% **lower** and those aged 35 to 39 years 12.4% **lower**. The percentage difference in the 80 to 84 age group was 40.3% **lower**, but this only equates to 25 persons.
- Pontprennau is ranked 39th (MYE) and 38th (NHSAR) out of 47 MSOAs in Cardiff for it's total dependency ratio.
- Within the Cardiff North Locality Pontprennau is ranked 11th (MYE & NHSAR) out of 12 MSOAs for it's total dependency ratio.
- Pontprennau is ranked 5th (MYE) and 8th (NHSAR) out of 47 MSOAs in Cardiff for the total number of younger dependents aged 0 to 14.
- Within it's locality Pontprennau is ranked 2nd (MYE & NHSAR) out of 12 MSOAs for the total number of younger dependents aged 0 to 14 in the locality.
- Pontprennau is ranked 47th (MYE & NHSAR) out of 47 MSOAs for the total number of older dependents aged 65 plus.
- Within it's locality Pontprennau is ranked 12th (MYE & NHSAR) out of 12 MSOAs for the total number of older dependents aged 65 plus.
- The vast majority of dependent age groups (0 to 14 + 65 and over) are younger dependents aged 0 to 14, representing 82.0% (MYE) and 82.3% (NHSAR) of total dependents.

Dependency Ratios at Mid 2004 in Pontprennau MSA (Sources: Derived from Data Supplied by ONS & HSW)		
	MYE	NHSAR
Dependents Aged 0 - 14	1,600	1,600
Dependents Aged 65 Plus	400	300
Total Dependents	2,000	1,900
Persons Aged 15 to 64	5,300	4,900
Total Persons	7,300	6,900
Pontprennau Dependency Ratio	0.38	0.39
Locality Dependency Ratio	0.52	0.48
Cardiff Dependency Ratio	0.47	0.43
Wales Dependency Ratio	0.57	0.52

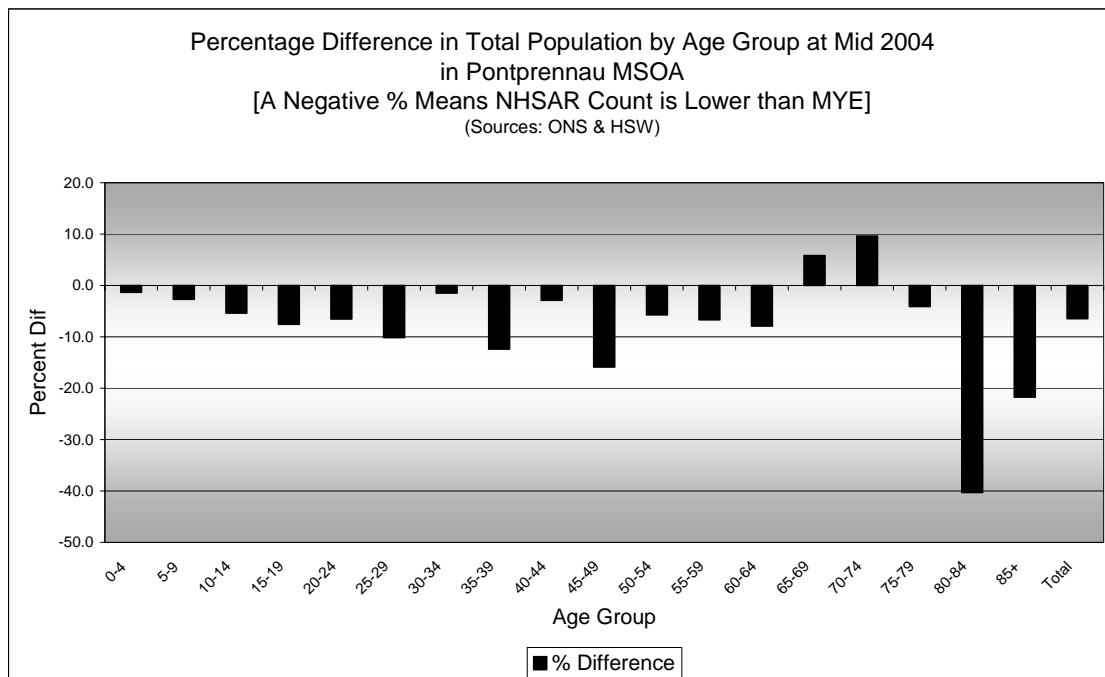
Broad Age Group Comparisons

Comparison of Population Sources by Broad Age Group for Mid 2004 in Pontprennau MSOA						
	0-15	16-29	30-44	45-64 Males, 45-59 Females	65+ Males, 60+ Females	All Ages
MYE	1,700	1,400	2,400	1,300	500	7,300
NHSAR	1,700	1,300	2,300	1,200	400	6,900
Difference #	-61	-119	-135	-129	-31	-475
Difference %	-3.5	-8.3	-5.6	-9.8	-6.7	-6.5

Comparison of Broad Population Age Structures for Mid 2004 by Percentage of Total Population in Pontprennau MSOA						
	0-15	16-29	30-44	45-64 Males, 45-59 Females	65+ Males, 60+ Females	All Ages
MYE	23.6	19.6	32.6	17.9	6.3	100.0
NHSAR	24.4	19.2	32.9	17.2	6.3	100.0

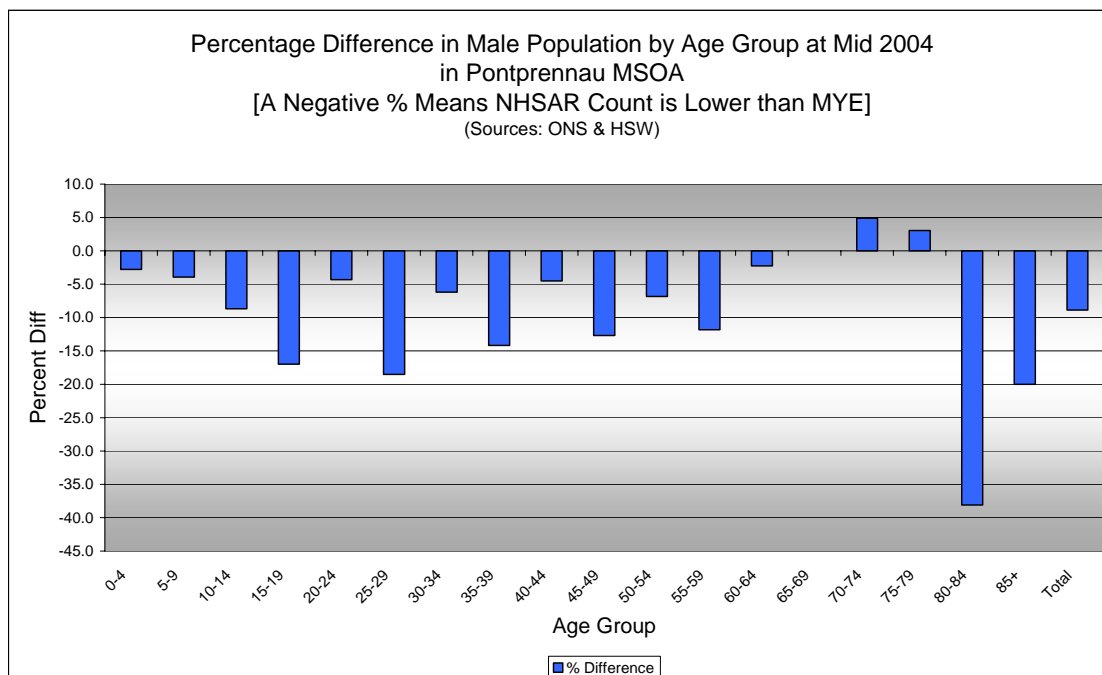


Quinary Age Group Comparisons – 2004 NHSAR Minus MYE



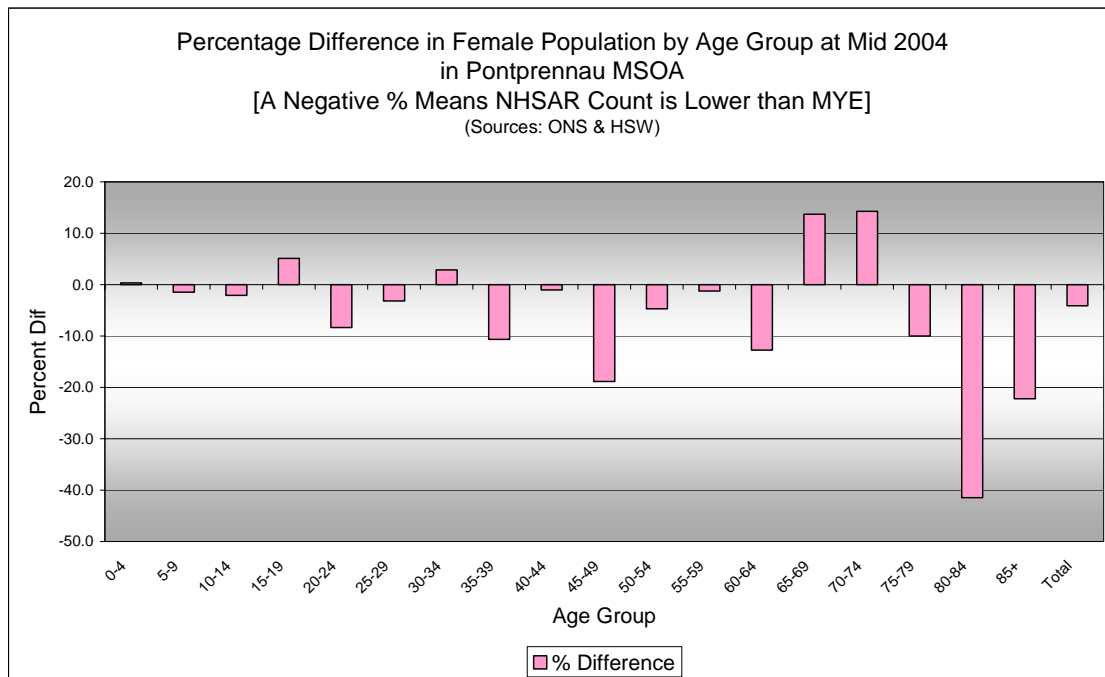
Comparison of Total Population by Age Group at Mid 2004 in Pontprennau MSOA
[Difference = NHSAR Minus MYE] (Sources: ONS & HSW)

Age	Persons (MYE)	Persons (NHSAR)	# Difference	% Difference
0-4	600	600	-8	-1.3
5-9	600	500	-15	-2.7
10-14	500	500	-26	-5.4
15-19	400	300	-28	-7.6
20-24	400	400	-27	-6.6
25-29	700	700	-76	-10.1
30-34	900	900	-14	-1.5
35-39	800	700	-103	-12.4
40-44	600	600	-18	-2.9
45-49	500	400	-84	-15.9
50-54	400	300	-21	-5.7
55-59	300	300	-22	-6.7
60-64	200	200	-15	-7.9
65-69	100	100	7	5.8
70-74	100	100	8	9.6
75-79	100	100	-3	-4.1
80-84	100	50	-25	-40.3
85+	50	50	-5	-21.7
Total	7,300	6,900	-475	-6.5



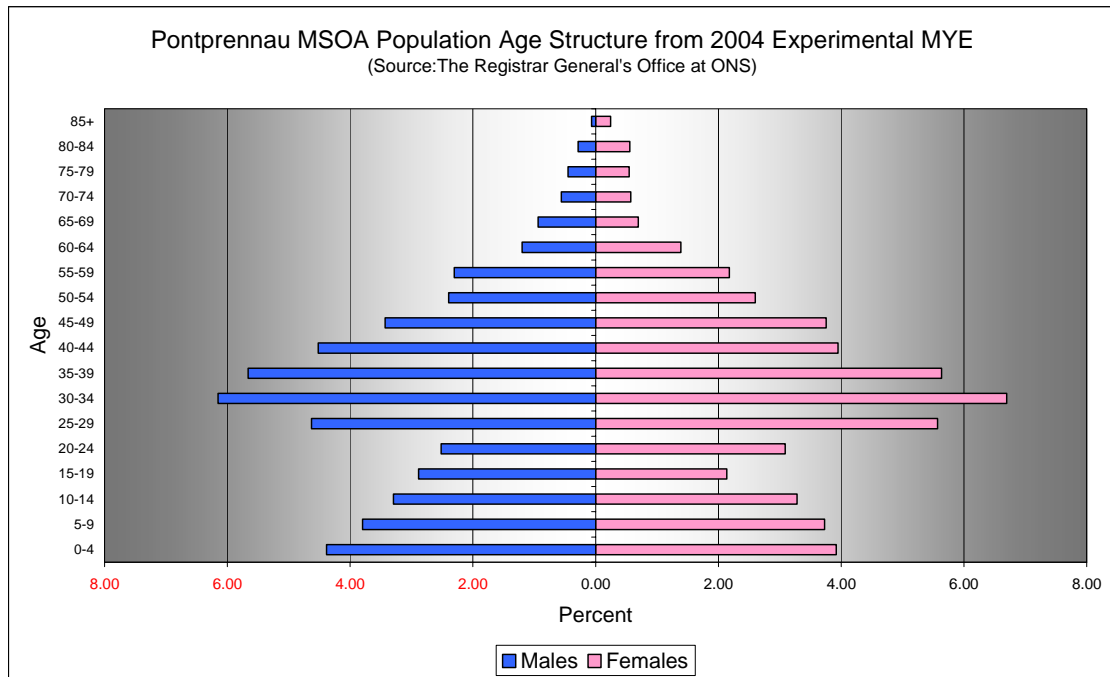
Comparison of Male Population by Age Group at Mid 2004 in Pontprennau MSOA
[Difference = NHSAR Minus MYE] (Sources: ONS & HSW)

Age	Males (MYE)	Males (NHSAR)	# Difference	% Difference
0-4	300	300	-9	-2.8
5-9	300	300	-11	-3.9
10-14	200	200	-21	-8.7
15-19	200	200	-36	-17.0
20-24	200	200	-8	-4.3
25-29	300	300	-63	-18.5
30-34	500	400	-28	-6.2
35-39	400	400	-59	-14.2
40-44	300	300	-15	-4.5
45-49	300	200	-32	-12.7
50-54	200	200	-12	-6.8
55-59	200	100	-20	-11.8
60-64	100	100	-2	-2.3
65-69	100	100	0	0.0
70-74	50	50	2	4.9
75-79	50	50	1	3.0
80-84	50	50	-8	-38.1
85+	50	50	-1	-20.0
Total	3,600	3,300	-322	-8.9



Comparison of Female Population by Age Group at Mid 2004 in Pontprennau MSOA [Difference = NHSAR Minus MYE] (Sources: ONS & HSW)				
Age	Females (MYE)	Females (NHSAR)	# Difference	% Difference
0-4	300	300	1	0.3
5-9	300	300	-4	-1.5
10-14	200	200	-5	-2.1
15-19	200	200	8	5.1
20-24	200	200	-19	-8.4
25-29	400	400	-13	-3.2
30-34	500	500	14	2.8
35-39	400	400	-44	-10.6
40-44	300	300	-3	-1.0
45-49	300	200	-52	-18.8
50-54	200	200	-9	-4.7
55-59	200	200	-2	-1.3
60-64	100	100	-13	-12.7
65-69	100	100	7	13.7
70-74	50	50	6	14.3
75-79	50	50	-4	-10.0
80-84	50	50	-17	-41.5
85+	50	50	-4	-22.2
Total	3,700	3,600	-153	-4.1

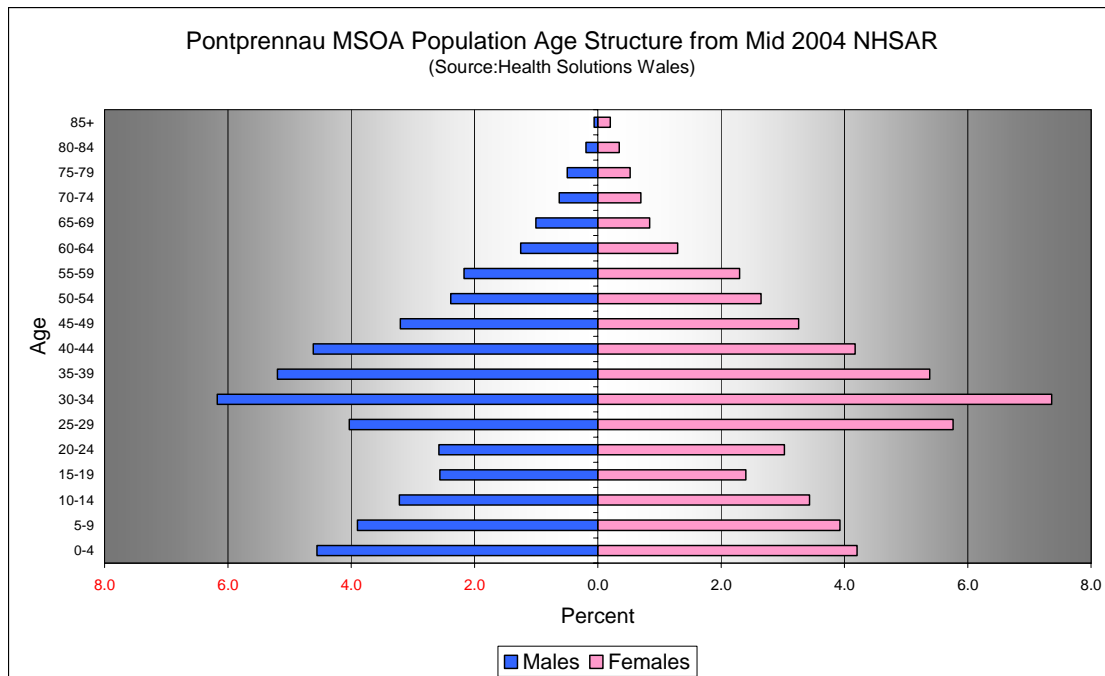
Quinary Population Age Structure - 2004 MYE



Pontprennau MSOA Population Age Structure 2004 MYE (Source: ONS)			
Age	Males	Females	Persons
0-4	300	300	600
5-9	300	300	600
10-14	200	200	500
15-19	200	200	400
20-24	200	200	400
25-29	300	400	700
30-34	500	500	900
35-39	400	400	800
40-44	300	300	600
45-49	300	300	500
50-54	200	200	400
55-59	200	200	300
60-64	100	100	200
65-69	100	100	100
70-74	50	50	100
75-79	50	50	100
80-84	50	50	100
85+	50	50	50
Total	3,600	3,700	7,300

Pontprennau MSOA Population Age Structure 2004 MYE - Percentage of total Persons (Source: ONS)			
Age	Males	Females	Persons
0-4	4.4	3.9	8.3
5-9	3.8	3.7	7.5
10-14	3.3	3.3	6.6
15-19	2.9	2.1	5.0
20-24	2.5	3.1	5.6
25-29	4.6	5.6	10.2
30-34	6.2	6.7	12.8
35-39	5.7	5.6	11.3
40-44	4.5	3.9	8.5
45-49	3.4	3.8	7.2
50-54	2.4	2.6	5.0
55-59	2.3	2.2	4.5
60-64	1.2	1.4	2.6
65-69	0.9	0.7	1.6
70-74	0.6	0.6	1.1
75-79	0.4	0.5	1.0
80-84	0.3	0.6	0.8
85+	0.1	0.2	0.3
Total	49.5	50.5	100.0

Quinary Population Age Structure Mid 2004 NHSAR



Pontprennau MSOA Population Age Structure - NHSAR Mid 2004 (Source: HSW)			
Age	Males	Females	Persons
0-4	300	300	600
5-9	300	300	500
10-14	200	200	500
15-19	200	200	300
20-24	200	200	400
25-29	300	400	700
30-34	400	500	900
35-39	400	400	700
40-44	300	300	600
45-49	200	200	400
50-54	200	200	300
55-59	100	200	300
60-64	100	100	200
65-69	100	100	100
70-74	50	50	100
75-79	50	50	100
80-84	50	50	50
85+	50	50	50
Total	3,300	3,600	6,900

Pontprennau MSOA Population Age Structure % of Total Persons - NHSAR Mid 2004 (Source: HSW)			
Age	Males	Females	Persons
0-4	4.6	4.2	8.8
5-9	3.9	3.9	7.8
10-14	3.2	3.4	6.7
15-19	2.6	2.4	5.0
20-24	2.6	3.0	5.6
25-29	4.0	5.8	9.8
30-34	6.2	7.4	13.5
35-39	5.2	5.4	10.6
40-44	4.6	4.2	8.8
45-49	3.2	3.3	6.5
50-54	2.4	2.6	5.0
55-59	2.2	2.3	4.5
60-64	1.3	1.3	2.5
65-69	1.0	0.8	1.8
70-74	0.6	0.7	1.3
75-79	0.5	0.5	1.0
80-84	0.2	0.3	0.5
85+	0.1	0.2	0.3
Total	48.2	51.8	100.0