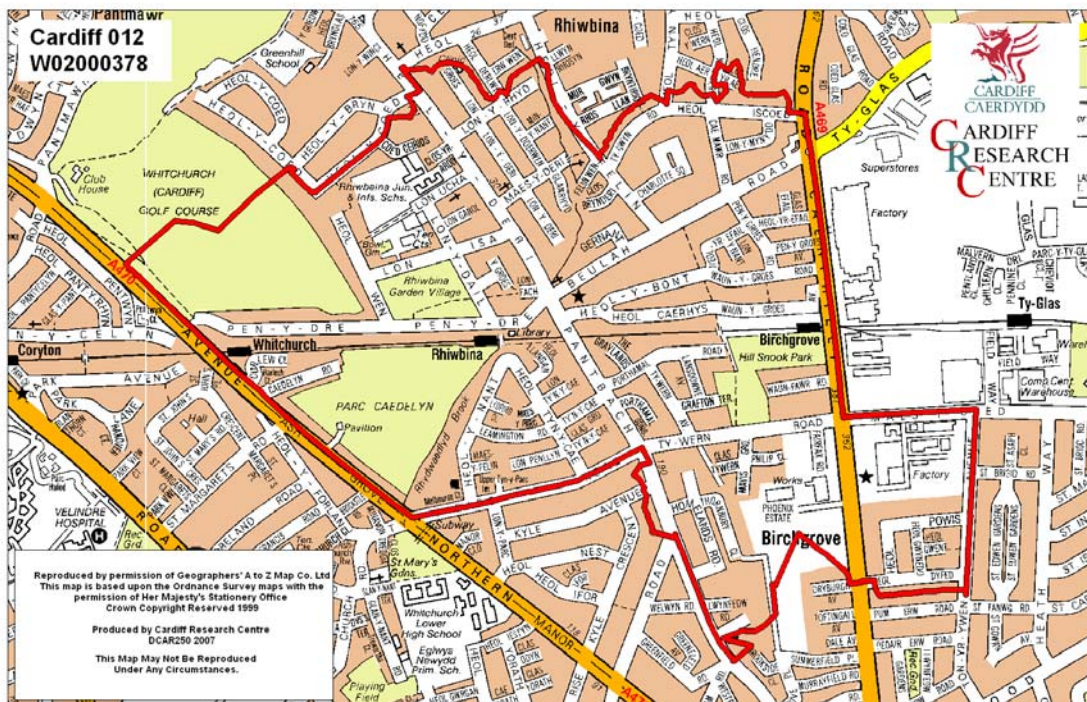


Rhiwbina Middle Super Output Area

A comparison of Population Age Structure's for Mid 2004 from the National Statistics experimental Mid Year Estimate and the National Health Service Administrative Records (NHSAR)

Figure: Rhiwbina MSOA (Cardiff North Locality)



Disclosure Control: Due to a requirement to observe the Registrar General's disclosure control protocols for experimental and official Mid Year Estimates of population it has been necessary to round population figures provided in this profile to the nearest 100 persons. Due to the danger of disclosure by difference the NHSAR population figures in this brief have also been rounded to the nearest 100 persons. For both datasets, when the population estimate was less than 50 persons, the value of 50 has been used. However, it is important to note that all graphics and the percentages presented in this profile have been produced using raw un-rounded estimates. The difference between NHSAR and MYE population estimates are also presented here in their un-rounded raw format.

Summary Key Statistics

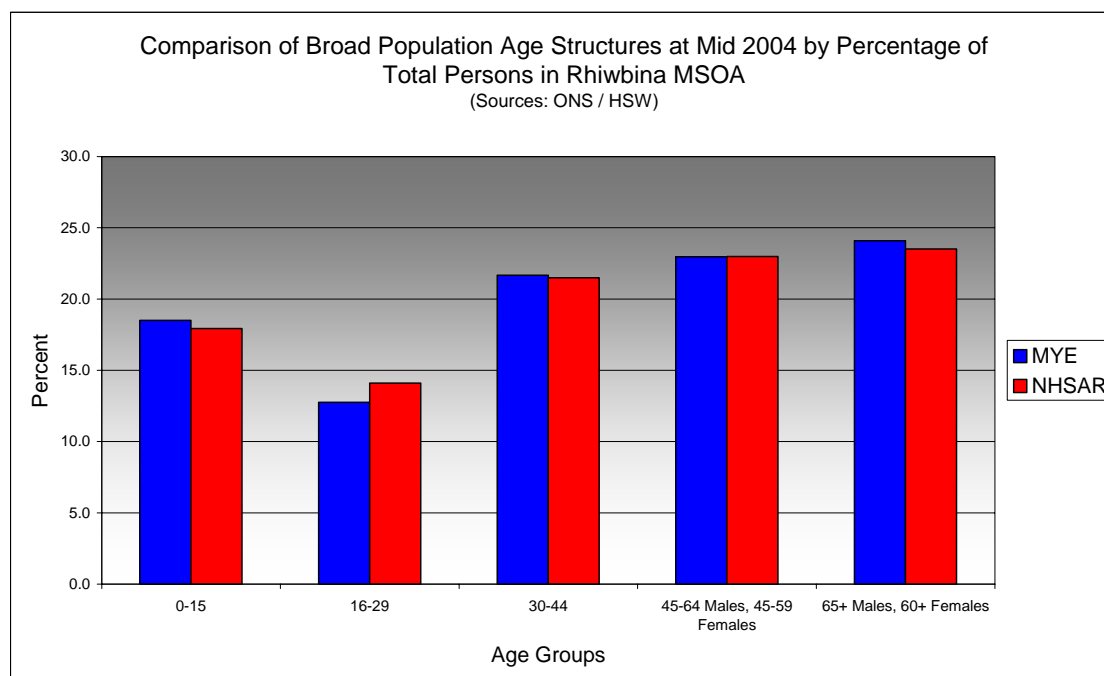
- In Rhiwbina total NHSAR population at Mid 2004 was 3.8% (approximately 250 persons) higher than the experimental Mid Year Estimate.
- Total male NHSAR population was 5.2% higher, while total female population was 2.6% higher than the experimental Mid Year Estimate.
- NHSAR population counts showed the greatest variance from the Experimental MYEs in the following age groups: 20 to 24 years 22.6% higher and those aged 25 to 29 years 22.4% higher.
- Rhiwbina is ranked 6th (MYE) and 4th (NHSAR) out of 47 MSOAs in Cardiff for it's total dependency ratio.
- Within the Cardiff North Locality Rhiwbina is ranked 3rd (MYE & NHSAR) out of 12 MSOAs for it's total dependency ratio.
- Rhiwbina is ranked 29th (MYE) and 32nd (NHSAR) out of 47 MSOAs in Cardiff for the total number of younger dependents aged 0 to 14.
- Within it's locality Rhiwbina is ranked 7th (MYE & NHSAR) out of 12 MSOAs for the total number of younger dependents aged 0 to 14 in the locality.
- Rhiwbina is ranked 5th (MYE & NHSAR) out of 47 MSOAs for the total number of older dependents aged 65 plus.
- Within it's locality Rhiwbina is ranked 4th (MYE & NHSAR) out of 12 MSOAs for the total number of older dependents aged 65 plus.
- The majority of dependent age groups (0 to 14 + 65 and over) are older dependents aged 65 and over, representing 55.3% (MYE) and 55.5% (NHSAR) of total dependents.

Dependency Ratios at Mid 2004 in Rhiwbina MSOA (Sources: Derived from Data Supplied by ONS & HSW)		
	MYE	NHSAR
Dependents Aged 0 - 14	1,100	1,100
Dependents Aged 65 Plus	1,400	1,400
Total Dependents	2,500	2,600
Persons Aged 15 to 64	4,000	4,300
Total Persons	6,600	6,800
Rhiwbina Dependency Ratio	0.63	0.60
Locality Dependency Ratio	0.52	0.48
Cardiff Dependency Ratio	0.47	0.43
Wales Dependency Ratio	0.57	0.52

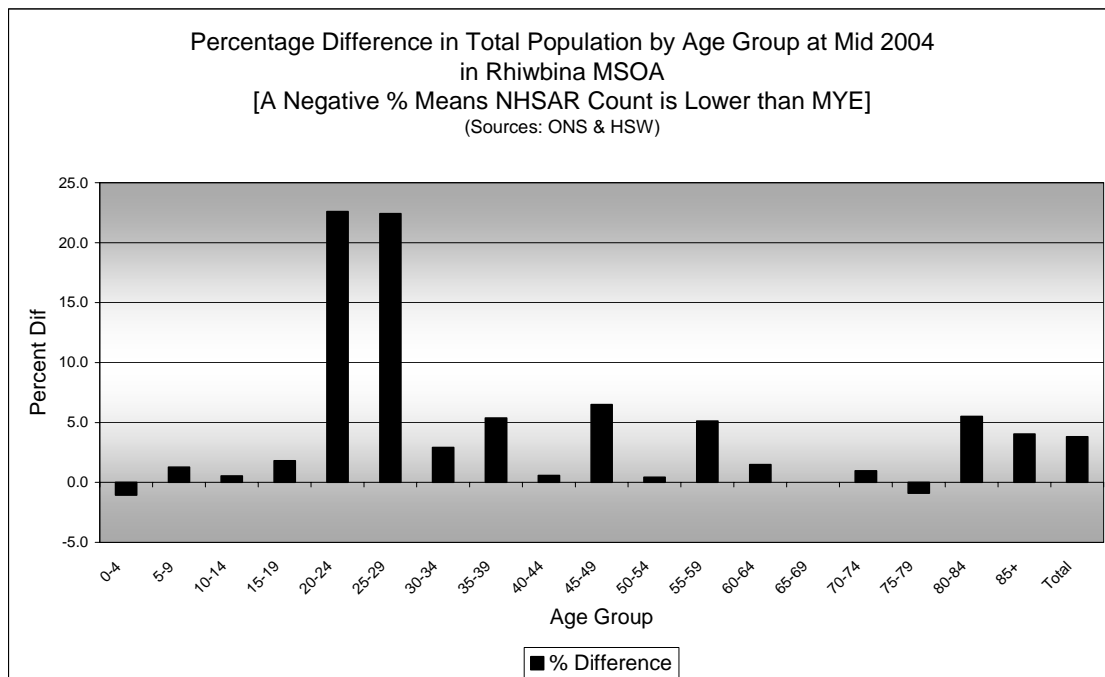
Broad Age Group Comparisons

Comparison of Population Sources by Broad Age Group for Mid 2004 in Rhiwbina MSOA						
	0-15	16-29	30-44	45-64 Males, 45-59 Females	65+ Males, 60+ Females	All Ages
MYE	1,200	800	1,400	1,500	1,600	6,600
NHSAR	1,200	1,000	1,500	1,600	1,600	6,800
Difference #	7	123	42	58	21	251
Difference %	0.6	14.6	2.9	3.8	1.3	3.8

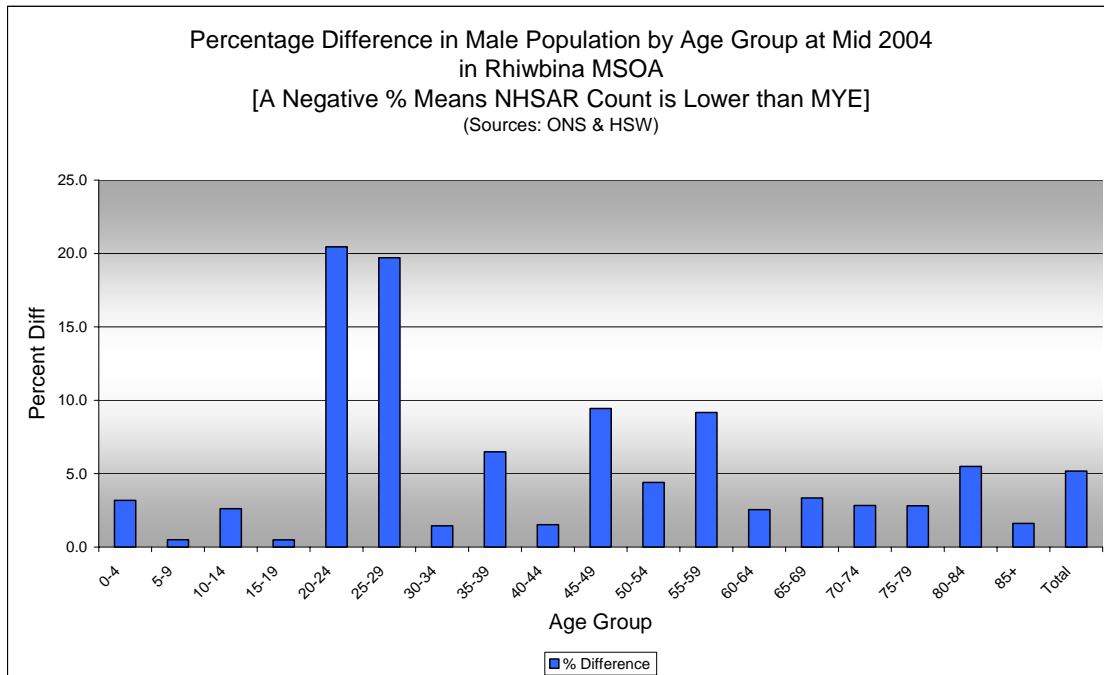
Comparison of Broad Population Age Structures for Mid 2004 by Percentage of Total Population in Rhiwbina MSOA						
	0-15	16-29	30-44	45-64 Males, 45-59 Females	65+ Males, 60+ Females	All Ages
MYE	18.5	12.8	21.7	23.0	24.1	100.0
NHSAR	17.9	14.1	21.5	23.0	23.5	100.0



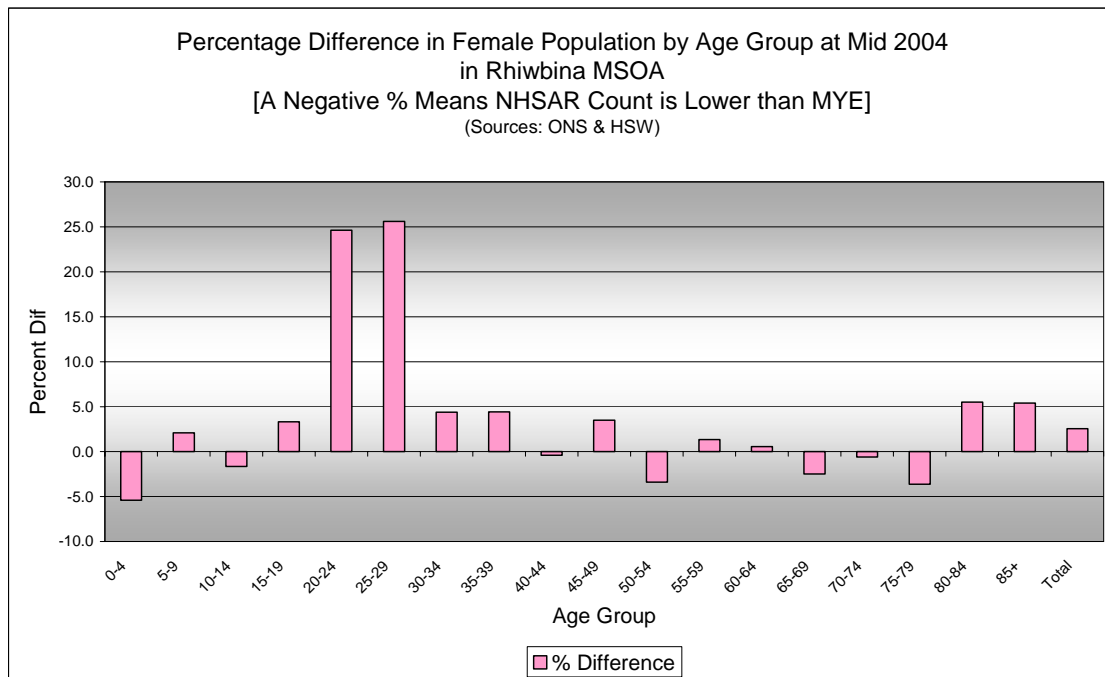
Quinary Age Group Comparisons – 2004 NHSAR Minus MYE



Comparison of Total Population by Age Group at Mid 2004 in Rhiwbina MSOA [Difference = NHSAR Minus MYE] (Sources: ONS & HSW)				
Age	Persons (MYE)	Persons (NHSAR)	# Difference	% Difference
0-4	400	400	-4	-1.1
5-9	400	400	5	1.3
10-14	400	400	2	0.5
15-19	400	400	7	1.8
20-24	300	300	61	22.6
25-29	300	300	59	22.4
30-34	400	400	12	2.9
35-39	500	500	27	5.4
40-44	500	500	3	0.6
45-49	500	500	30	6.5
50-54	500	500	2	0.4
55-59	400	500	22	5.1
60-64	300	300	5	1.5
65-69	400	400	0	0.0
70-74	300	300	3	1.0
75-79	300	300	-3	-0.9
80-84	200	200	13	5.5
85+	200	200	7	4.0
Total	6,600	6,800	251	3.8



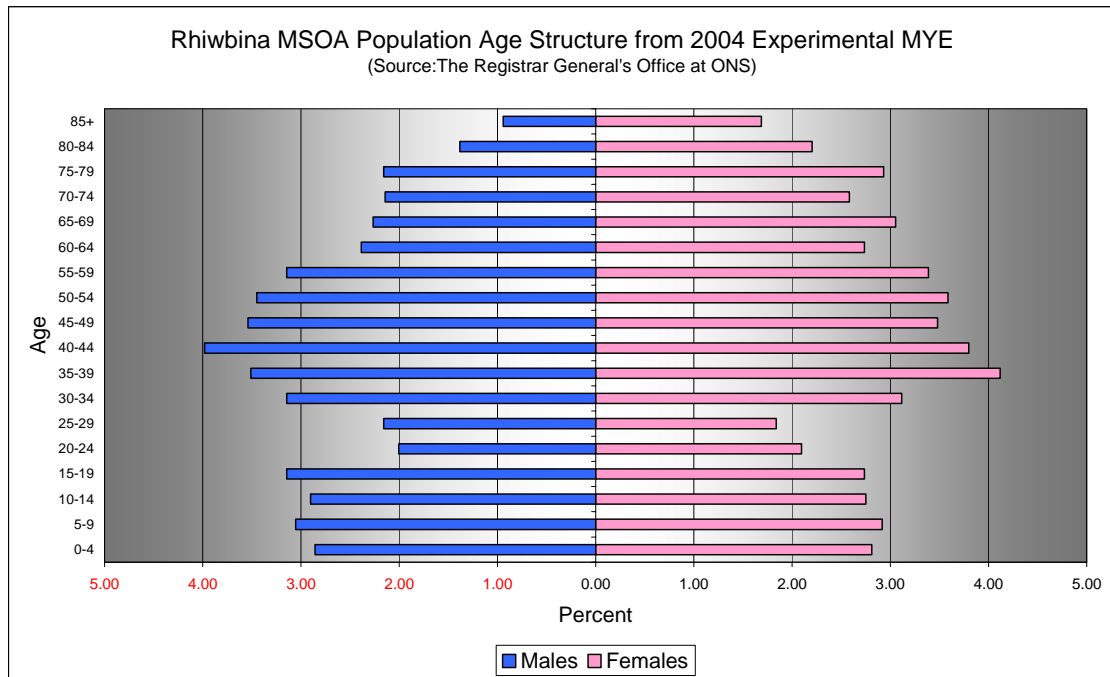
Comparison of Male Population by Age Group at Mid 2004 in Rhiwbina MSOA [Difference = NHSAR Minus MYE] (Sources: ONS & HSW)				
Age	Males (MYE)	Males (NHSAR)	# Difference	% Difference
0-4	200	200	6	3.2
5-9	200	200	1	0.5
10-14	200	200	5	2.6
15-19	200	200	1	0.5
20-24	100	200	27	20.5
25-29	100	200	28	19.7
30-34	200	200	3	1.4
35-39	200	200	15	6.5
40-44	300	300	4	1.5
45-49	200	300	22	9.4
50-54	200	200	10	4.4
55-59	200	200	19	9.2
60-64	200	200	4	2.5
65-69	100	200	5	3.4
70-74	100	100	4	2.8
75-79	100	100	4	2.8
80-84	100	100	5	5.5
85+	100	100	1	1.6
Total	3,200	3,300	164	5.2



Comparison of Female Population by Age Group at Mid 2004 in Rhiwbina MSOA
[Difference = NHSAR Minus MYE] (Sources: ONS & HSW)

Age	Females (MYE)	Females (NHSAR)	# Difference	% Difference
0-4	200	200	-10	-5.4
5-9	200	200	4	2.1
10-14	200	200	-3	-1.7
15-19	200	200	6	3.3
20-24	100	200	34	24.6
25-29	100	200	31	25.6
30-34	200	200	9	4.4
35-39	300	300	12	4.4
40-44	300	200	-1	-0.4
45-49	200	200	8	3.5
50-54	200	200	-8	-3.4
55-59	200	200	3	1.3
60-64	200	200	1	0.6
65-69	200	200	-5	-2.5
70-74	200	200	-1	-0.6
75-79	200	200	-7	-3.6
80-84	100	200	8	5.5
85+	100	100	6	5.4
Total	3,400	3,500	87	2.6

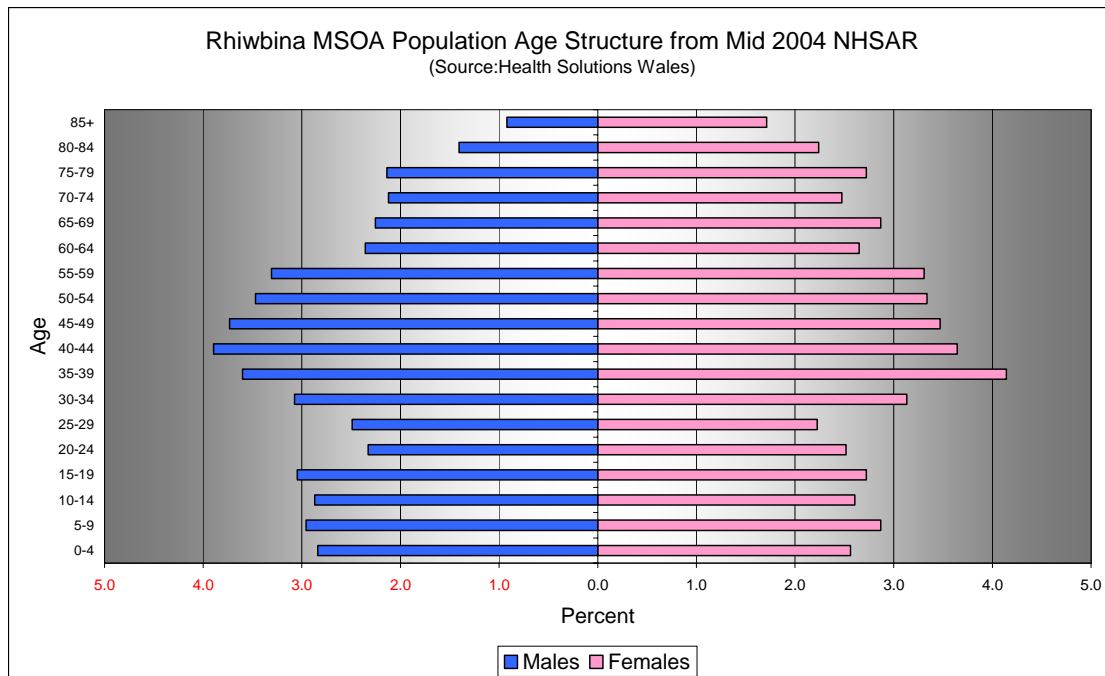
Quinary Population Age Structure - 2004 MYE



Rhiwbina MSOA Population Age Structure 2004 MYE (Source: ONS)			
Age	Males	Females	Persons
0-4	200	200	400
5-9	200	200	400
10-14	200	200	400
15-19	200	200	400
20-24	100	100	300
25-29	100	100	300
30-34	200	200	400
35-39	200	300	500
40-44	300	300	500
45-49	200	200	500
50-54	200	200	500
55-59	200	200	400
60-64	200	200	300
65-69	100	200	400
70-74	100	200	300
75-79	100	200	300
80-84	100	100	200
85+	100	100	200
Total	3,200	3,400	6,600

Rhiwbina MSOA Population Age Structure 2004 MYE - Percentage of total Persons (Source: ONS)			
Age	Males	Females	Persons
0-4	2.9	2.8	5.7
5-9	3.1	2.9	6.0
10-14	2.9	2.8	5.7
15-19	3.1	2.7	5.9
20-24	2.0	2.1	4.1
25-29	2.2	1.8	4.0
30-34	3.1	3.1	6.3
35-39	3.5	4.1	7.6
40-44	4.0	3.8	7.8
45-49	3.5	3.5	7.0
50-54	3.4	3.6	7.0
55-59	3.1	3.4	6.5
60-64	2.4	2.7	5.1
65-69	2.3	3.1	5.3
70-74	2.1	2.6	4.7
75-79	2.2	2.9	5.1
80-84	1.4	2.2	3.6
85+	0.9	1.7	2.6
Total	48.2	51.8	100.0

Quinary Population Age Structure Mid 2004 NHSAR



Rhiwbina MSOA Population Age Structure - NHSAR Mid 2004 (Source: HSW)			
Age	Males	Females	Persons
0-4	200	200	400
5-9	200	200	400
10-14	200	200	400
15-19	200	200	400
20-24	200	200	300
25-29	200	200	300
30-34	200	200	400
35-39	200	300	500
40-44	300	200	500
45-49	300	200	500
50-54	200	200	500
55-59	200	200	500
60-64	200	200	300
65-69	200	200	400
70-74	100	200	300
75-79	100	200	300
80-84	100	200	200
85+	100	100	200
Total	3,300	3,500	6,800

Rhiwbina MSOA Population Age Structure % of Total Persons - NHSAR Mid 2004 (Source: HSW)			
Age	Males	Females	Persons
0-4	2.8	2.6	5.4
5-9	3.0	2.9	5.8
10-14	2.9	2.6	5.5
15-19	3.0	2.7	5.8
20-24	2.3	2.5	4.8
25-29	2.5	2.2	4.7
30-34	3.1	3.1	6.2
35-39	3.6	4.1	7.7
40-44	3.9	3.6	7.5
45-49	3.7	3.5	7.2
50-54	3.5	3.3	6.8
55-59	3.3	3.3	6.6
60-64	2.4	2.6	5.0
65-69	2.3	2.9	5.1
70-74	2.1	2.5	4.6
75-79	2.1	2.7	4.9
80-84	1.4	2.2	3.6
85+	0.9	1.7	2.6
Total	48.8	51.2	100.0