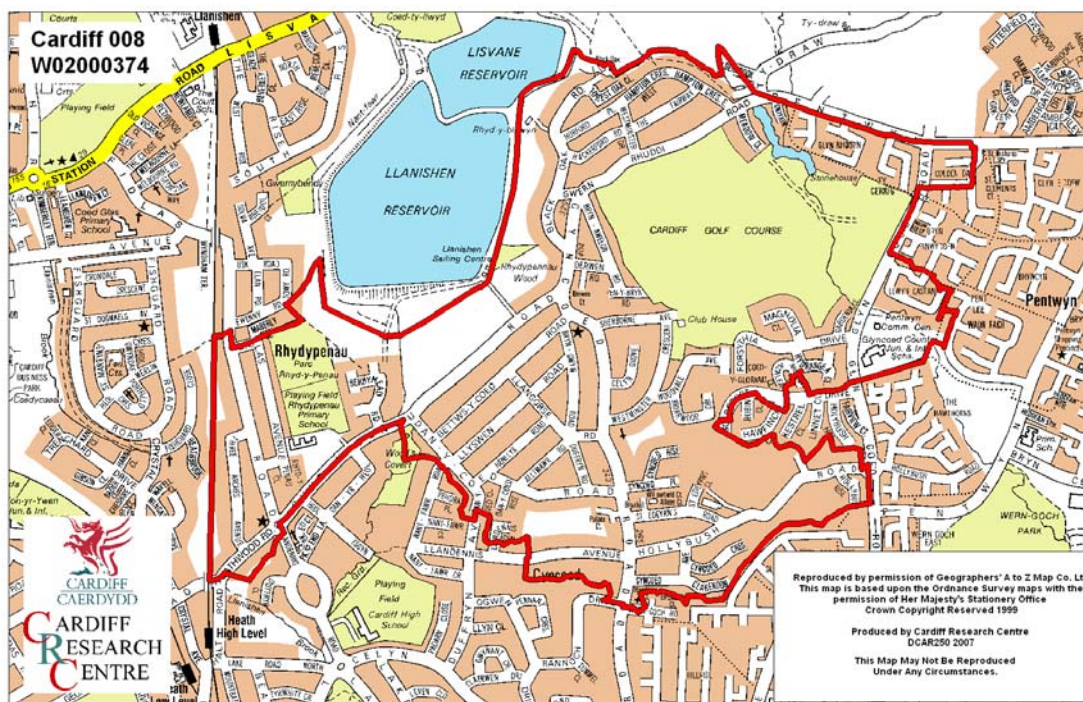


Rhydpennau Middle Super Output Area

A comparison of Population Age Structure's for Mid 2004 from the National Statistics experimental Mid Year Estimate and the National Health Service Administrative Records (NHSAR)

Figure: Rhydpennau MSAO (Cardiff Central Locality)



Disclosure Control: Due to a requirement to observe the Registrar General's disclosure control protocols for experimental and official Mid Year Estimates of population it has been necessary to round population figures provided in this profile to the nearest 100 persons. Due to the danger of disclosure by difference the NHSAR population figures in this brief have also been rounded to the nearest 100 persons. For both datasets, when the population estimate was less than 50 persons, the value of 50 has been used. However, it is important to note that all graphics and the percentages presented in this profile have been produced using raw un-rounded estimates. The difference between NHSAR and MYE population estimates are also presented here in their un-rounded raw format.

Summary Key Statistics

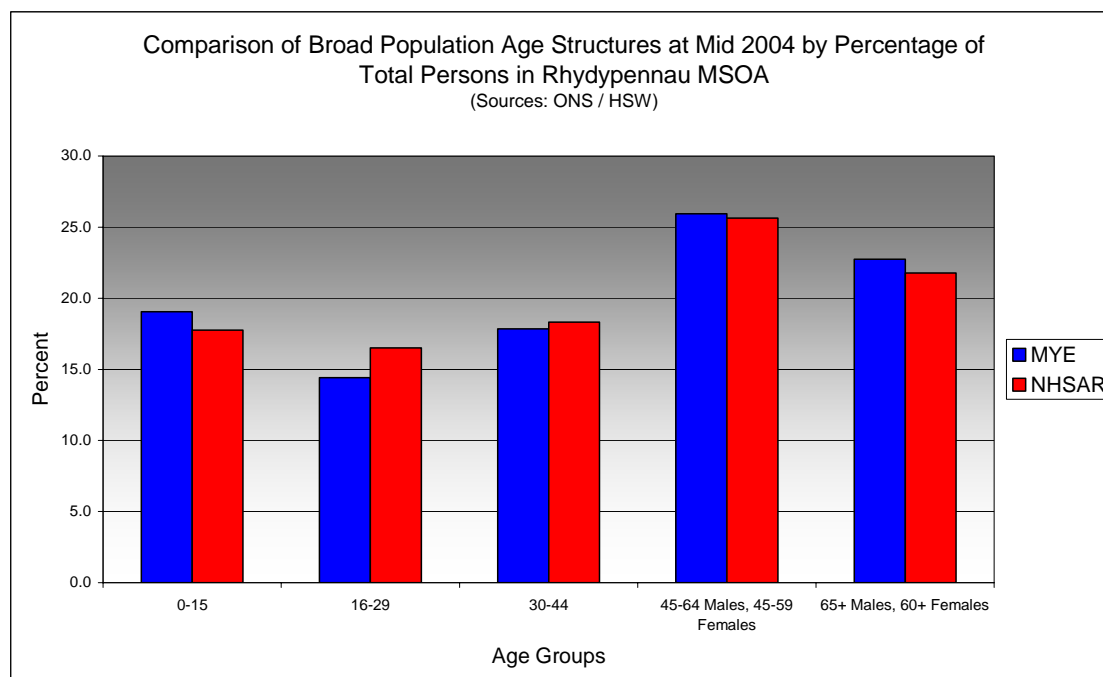
- In Rhydpennau total NHSAR population at Mid 2004 was 8.4% (approximately 500 persons) higher than the experimental Mid Year Estimate.
- Total male NHSAR population was 8.3% higher, while total female population was 8.6% higher than the experimental Mid Year Estimate.
- NHSAR population counts showed the greatest variance from the Experimental MYEs in the following age groups: 20 to 24 years 58.9% higher and those aged 30 to 34 years 36.6% higher.
- Rhydpennau is ranked 11th (MYE) and 14th (NHSAR) out of 47 MSOAs in Cardiff for it's total dependency ratio.
- Within the Cardiff Central Locality Rhydpennau is ranked 2nd (MYE) & 1st (NHSAR) out of 12 MSOAs for it's total dependency ratio.
- Rhydpennau is ranked 35th (MYE & NHSAR) out of 47 MSOAs in Cardiff for the total number of younger dependents aged 0 to 14.
- Within it's locality Rhydpennau is ranked 5th (MYE & NHSAR) out of 11 MSOAs for the total number of younger dependents aged 0 to 14 in the locality.
- Rhydpennau is ranked 14th (MYE) and 12th (NHSAR) out of 47 MSOAs for the total number of older dependents aged 65 plus.
- Within it's locality Rhydpennau is ranked 3rd (MYE & NHSAR) out of 11 MSOAs for the total number of older dependents aged 65 plus.
- The majority of dependent age groups (0 to 14 + 65 and over) are older dependents aged 65 and over, representing 52.7% (MYE) and 53.6% (NHSAR) of total dependents.

Dependency Ratios at Mid 2004 in Rhydpennau MSOA (Sources: Derived from Data Supplied by ONS & HSW)		
	MYE	NHSAR
Dependents Aged 0 - 14	1,000	1,000
Dependents Aged 65 Plus	1,100	1,200
Total Dependents	2,200	2,200
Persons Aged 15 to 64	3,600	4,100
Total Persons	5,800	6,300
Rhydpennau Dependency Ratio	0.60	0.54
Locality Dependency Ratio	0.33	0.30
Cardiff Dependency Ratio	0.47	0.43
Wales Dependency Ratio	0.57	0.52

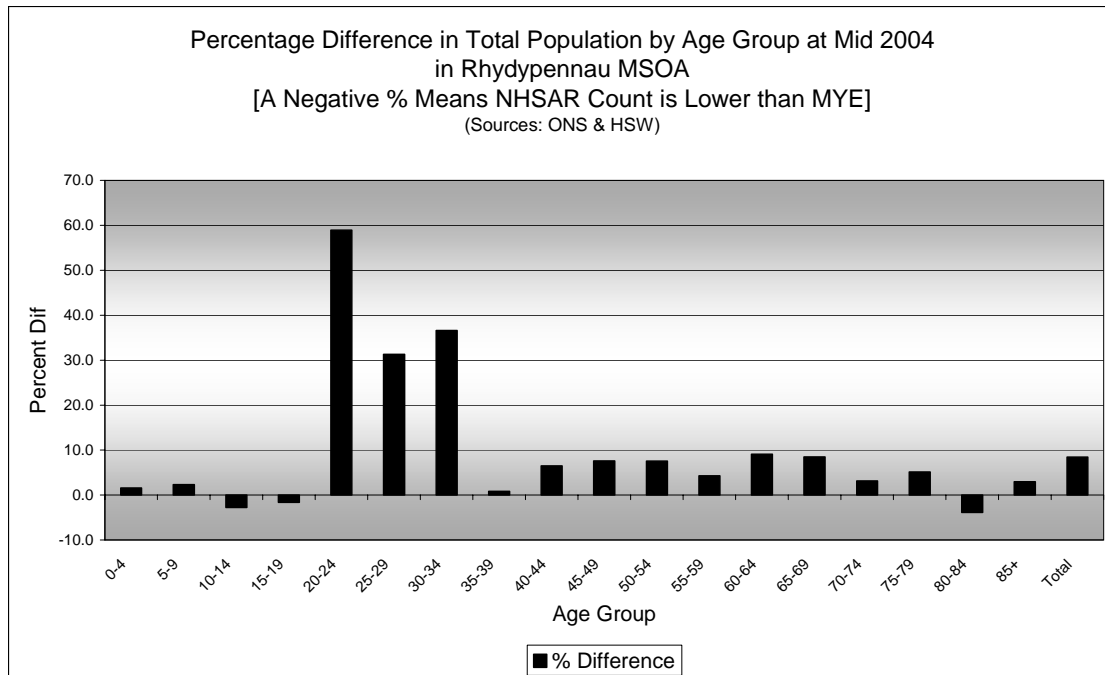
Broad Age Group Comparisons

Comparison of Population Sources by Broad Age Group for Mid 2004 in Rhydpennau MSOA						
	0-15	16-29	30-44	45-64 Males, 45-59 Females	65+ Males, 60+ Females	All Ages
MYE	1,100	800	1,000	1,500	1,300	5,800
NHSAR	1,100	1,000	1,200	1,600	1,400	6,300
Difference #	12	203	117	108	50	490
Difference %	1.1	24.3	11.3	7.2	3.8	8.4

Comparison of Broad Population Age Structures for Mid 2004 by Percentage of Total Population in Rhydpennau MSOA						
	0-15	16-29	30-44	45-64 Males, 45-59 Females	65+ Males, 60+ Females	All Ages
MYE	19.1	14.4	17.9	25.9	22.7	100.0
NHSAR	17.8	16.5	18.3	25.6	21.8	100.0

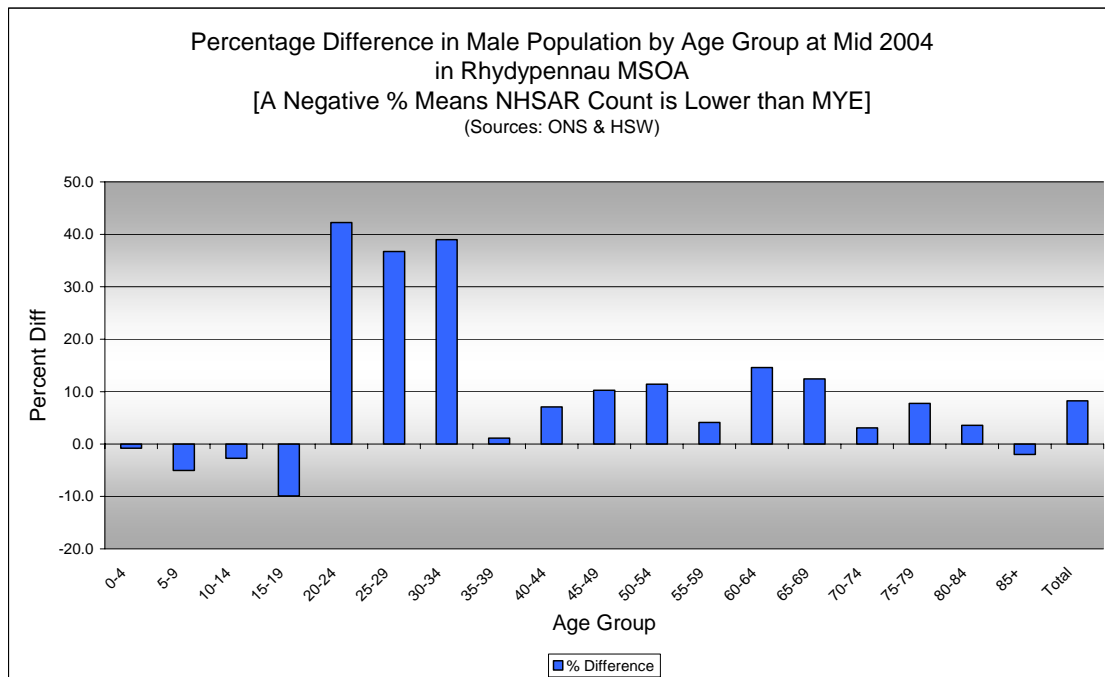


Quinary Age Group Comparisons – 2004 NHSAR Minus MYE



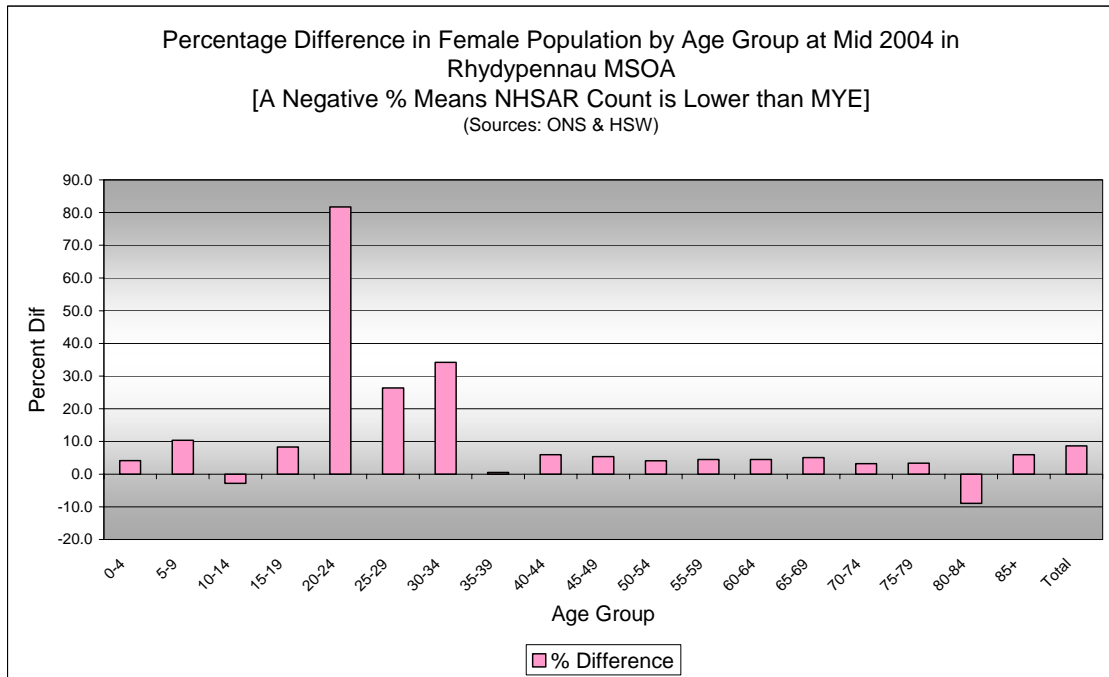
Comparison of Total Population by Age Group at Mid 2004 in Rhydyppennau MSOA
[Difference = NHSAR Minus MYE] (Sources: ONS & HSW)

Age	Persons (MYE)	Persons (NHSAR)	# Difference	% Difference
0-4	300	300	4	1.6
5-9	300	400	8	2.3
10-14	400	400	-12	-2.8
15-19	400	400	-7	-1.6
20-24	200	400	145	58.9
25-29	200	300	77	31.3
30-34	200	300	86	36.6
35-39	400	400	3	0.8
40-44	400	500	28	6.5
45-49	400	400	29	7.6
50-54	500	500	35	7.6
55-59	500	500	22	4.3
60-64	300	400	30	9.1
65-69	300	300	25	8.5
70-74	300	300	8	3.1
75-79	300	300	13	5.1
80-84	200	200	-8	-3.9
85+	100	100	4	3.0
Total	5,800	6,300	490	8.4



Comparison of Male Population by Age Group at Mid 2004 in Rhydpennau MSOA
[Difference = NHSAR Minus MYE] (Sources: ONS & HSW)

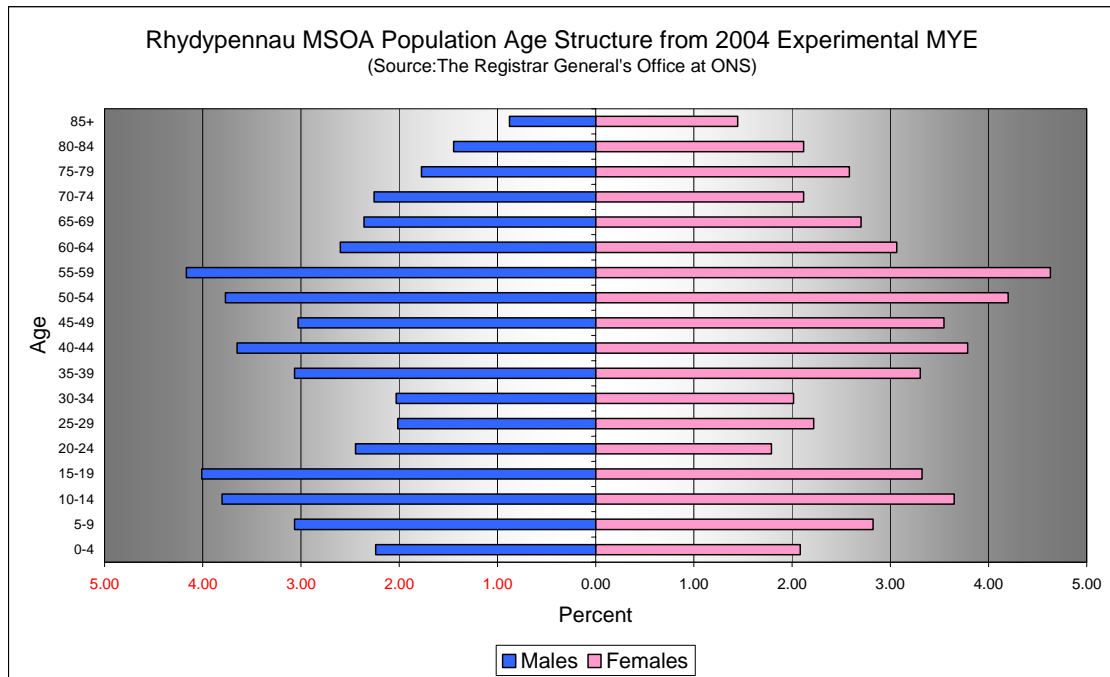
Age	Males (MYE)	Males (NHSAR)	# Difference	% Difference
0-4	100	100	-1	-0.8
5-9	200	200	-9	-5.1
10-14	200	200	-6	-2.7
15-19	200	200	-23	-9.9
20-24	100	200	60	42.3
25-29	100	200	43	36.8
30-34	100	200	46	39.0
35-39	200	200	2	1.1
40-44	200	200	15	7.1
45-49	200	200	18	10.2
50-54	200	200	25	11.4
55-59	200	300	10	4.1
60-64	200	200	22	14.6
65-69	100	200	17	12.4
70-74	100	100	4	3.1
75-79	100	100	8	7.8
80-84	100	100	3	3.6
85+	100	50	-1	-2.0
Total	2,800	3,100	233	8.3



Comparison of Female Population by Age Group at Mid 2004 in Rhydyppennau MSOA
 [Difference = NHSAR Minus MYE] (Sources: ONS & HSW)

Age	Females (MYE)	Females (NHSAR)	# Difference	% Difference
0-4	100	100	5	4.1
5-9	200	200	17	10.4
10-14	200	200	-6	-2.8
15-19	200	200	16	8.3
20-24	100	200	85	81.7
25-29	100	200	34	26.4
30-34	100	200	40	34.2
35-39	200	200	1	0.5
40-44	200	200	13	5.9
45-49	200	200	11	5.3
50-54	200	300	10	4.1
55-59	300	300	12	4.5
60-64	200	200	8	4.5
65-69	200	200	8	5.1
70-74	100	100	4	3.3
75-79	200	200	5	3.3
80-84	100	100	-11	-8.9
85+	100	100	5	6.0
Total	3,000	3,200	257	8.6

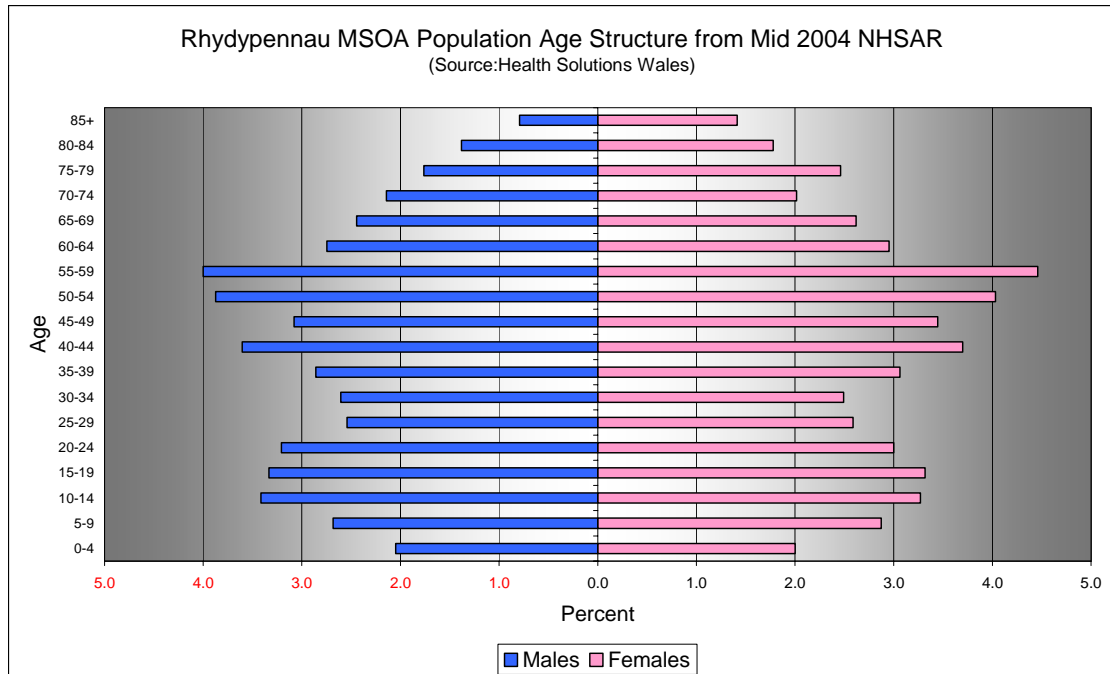
Quinary Population Age Structure - 2004 MYE



Rhydypennau MSOA Population Age Structure 2004 MYE (Source: ONS)			
Age	Males	Females	Persons
0-4	100	100	300
5-9	200	200	300
10-14	200	200	400
15-19	200	200	400
20-24	100	100	200
25-29	100	100	200
30-34	100	100	200
35-39	200	200	400
40-44	200	200	400
45-49	200	200	400
50-54	200	200	500
55-59	200	300	500
60-64	200	200	300
65-69	100	200	300
70-74	100	100	300
75-79	100	200	300
80-84	100	100	200
85+	100	100	100
Total	2,800	3,000	5,800

Rhydypennau MSOA Population Age Structure 2004 MYE - Percentage of total Persons (Source: ONS)			
Age	Males	Females	Persons
0-4	2.2	2.1	4.3
5-9	3.1	2.8	5.9
10-14	3.8	3.6	7.5
15-19	4.0	3.3	7.3
20-24	2.4	1.8	4.2
25-29	2.0	2.2	4.2
30-34	2.0	2.0	4.0
35-39	3.1	3.3	6.4
40-44	3.6	3.8	7.4
45-49	3.0	3.5	6.6
50-54	3.8	4.2	8.0
55-59	4.2	4.6	8.8
60-64	2.6	3.1	5.7
65-69	2.4	2.7	5.1
70-74	2.3	2.1	4.4
75-79	1.8	2.6	4.4
80-84	1.4	2.1	3.6
85+	0.9	1.4	2.3
Total	48.6	51.4	100.0

Quinary Population Age Structure Mid 2004 NHSAR



Rhydpennau MSOA Population Age Structure - NHSAR Mid 2004 (Source: HSW)			
Age	Males	Females	Persons
0-4	100	100	300
5-9	200	200	400
10-14	200	200	400
15-19	200	200	400
20-24	200	200	400
25-29	200	200	300
30-34	200	200	300
35-39	200	200	400
40-44	200	200	500
45-49	200	200	400
50-54	200	300	500
55-59	300	300	500
60-64	200	200	400
65-69	200	200	300
70-74	100	100	300
75-79	100	200	300
80-84	100	100	200
85+	50	100	100
Total	3,100	3,200	6,300

Rhydpennau MSOA Population Age Structure % of Total Persons - NHSAR Mid 2004 (Source: HSW)			
Age	Males	Females	Persons
0-4	2.0	2.0	4.0
5-9	2.7	2.9	5.6
10-14	3.4	3.3	6.7
15-19	3.3	3.3	6.7
20-24	3.2	3.0	6.2
25-29	2.5	2.6	5.1
30-34	2.6	2.5	5.1
35-39	2.9	3.1	5.9
40-44	3.6	3.7	7.3
45-49	3.1	3.4	6.5
50-54	3.9	4.0	7.9
55-59	4.0	4.5	8.5
60-64	2.7	3.0	5.7
65-69	2.4	2.6	5.1
70-74	2.1	2.0	4.2
75-79	1.8	2.5	4.2
80-84	1.4	1.8	3.2
85+	0.8	1.4	2.2
Total	48.5	51.5	100.0