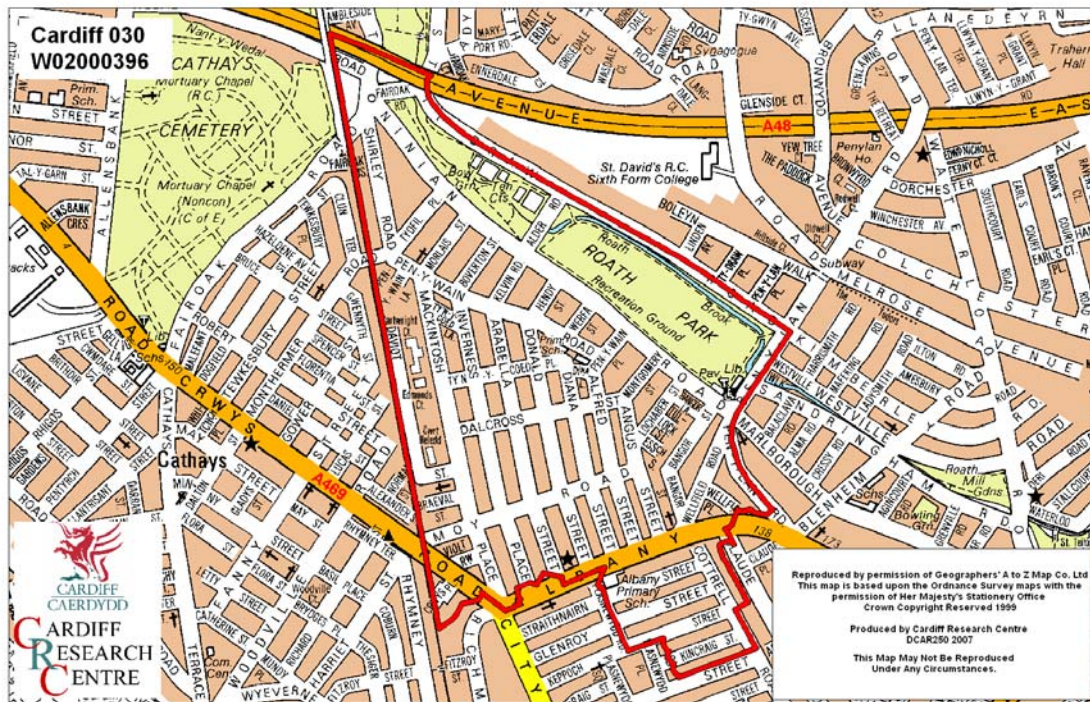


# Roath Park Middle Super Output Area

A comparison of Population Age Structure's for Mid 2004 from the National Statistics experimental Mid Year Estimate and the National Health Service Administrative Records (NHSAR)

Figure: Roath Park MSOA (Cardiff Central Locality)



**Disclosure Control:** Due to a requirement to observe the Registrar General's disclosure control protocols for experimental and official Mid Year Estimates of population it has been necessary to round population figures provided in this profile to the nearest 100 persons. Due to the danger of disclosure by difference the NHSAR population figures in this brief have also been rounded to the nearest 100 persons. For both datasets, when the population estimate was less than 50 persons, the value of 50 has been used. However, it is important to note that all graphics and the percentages presented in this profile have been produced using raw un-rounded estimates. The difference between NHSAR and MYE population estimates are also presented here in their un-rounded raw format.

## Summary Key Statistics

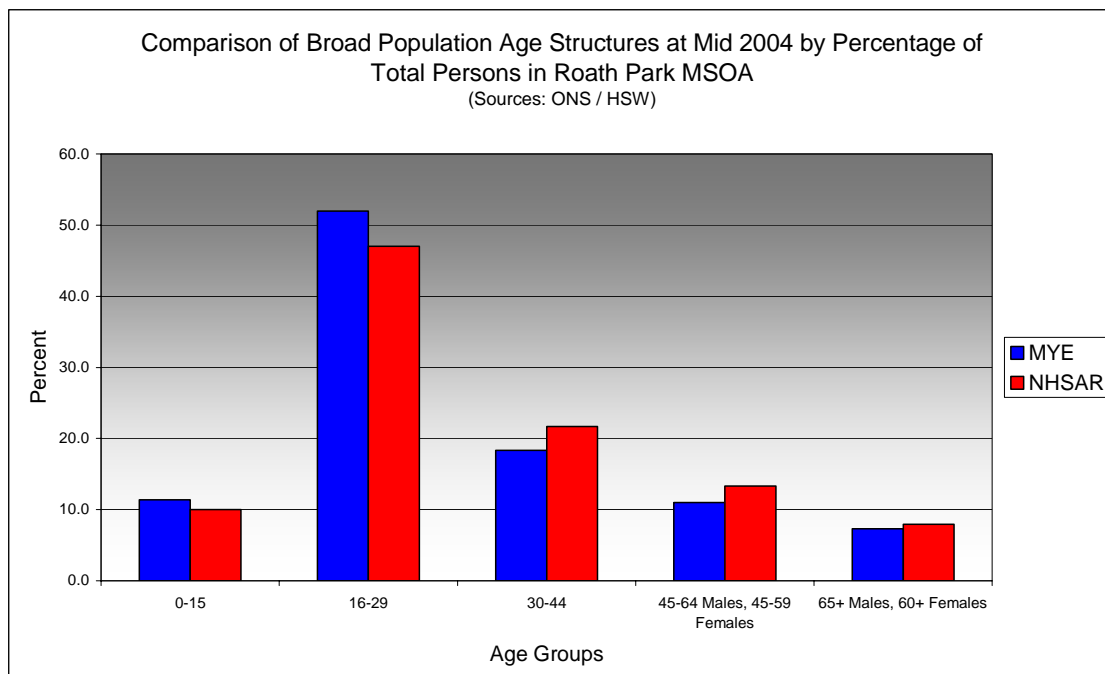
- In Roath Park total NHSAR population at Mid 2004 was 19.4% (approximately 1,500 persons) higher than the experimental Mid Year Estimate.
- Total male NHSAR population was 18.8% higher, while total female population was 20.1% higher than the experimental Mid Year Estimate.
- NHSAR population counts showed the greatest variance from the Experimental MYEs in the following age groups: 25 to 29 years 52.8% higher and those aged 35 to 39 years 49.4% higher.
- Roath Park is ranked 45<sup>th</sup> (MYE) and 46<sup>th</sup> (NHSAR) out of 47 MSOAs in Cardiff for it's total dependency ratio.
- Within the Cardiff Central Locality Roath Park is ranked 9<sup>th</sup> (MYE & NHSAR) out of 11 MSOAs for it's total dependency ratio.
- Roath Park is ranked 44<sup>th</sup> (MYE) and 42<sup>nd</sup> (NHSAR) out of 47 MSOAs in Cardiff for the total number of younger dependents aged 0 to 14.
- With it's locality Roath Park is ranked 8<sup>th</sup> (MYE & NHSAR) out of 11 MSOAs for the total number of younger dependents aged 0 to 14.
- Roath Park is ranked 42<sup>nd</sup> (MYE) and 41<sup>st</sup> (NHSAR) out of 47 MSOAs for the total number of older dependents aged 65 plus.
- Within it's locality Roath Park is ranked 9<sup>th</sup> (MYE & NHSAR) out of 11 MSOAs for the total number of older dependents aged 65 plus.
- The majority of dependent age groups (0 to 14 + 65 and over) are younger dependents aged 0 to 14, representing 62.8% (MYE) and 57.7% (NHSAR) of total dependents.

| <b>Dependency Ratios at Mid 2004 in Roath Park MSOA</b><br>(Sources: Derived from Data Supplied by ONS & HSW) |            |              |
|---|------------|--------------|
|   | <b>MYE</b> | <b>NHSAR</b> |
| <b>Dependents Aged 0 - 14</b>   | 800        | 900          |
| <b>Dependents Aged 65 Plus</b>  | 500        | 600          |
| <b>Total Dependents</b>   | 1,300      | 1,500        |
| <b>Persons Aged 15 to 64</b>  | 6,300      | 7,500        |
| <b>Total Persons</b>  | 7,500      | 9,000        |
| <b>Roath Park Dependency Ratio</b>  | 0.20       | 0.20         |
| <b>Locality Dependency Ratio</b>  | 0.33       | 0.30         |
| <b>Cardiff Dependency Ratio</b>   | 0.47       | 0.43         |
| <b>Wales Dependency Ratio</b>   | 0.57       | 0.52         |

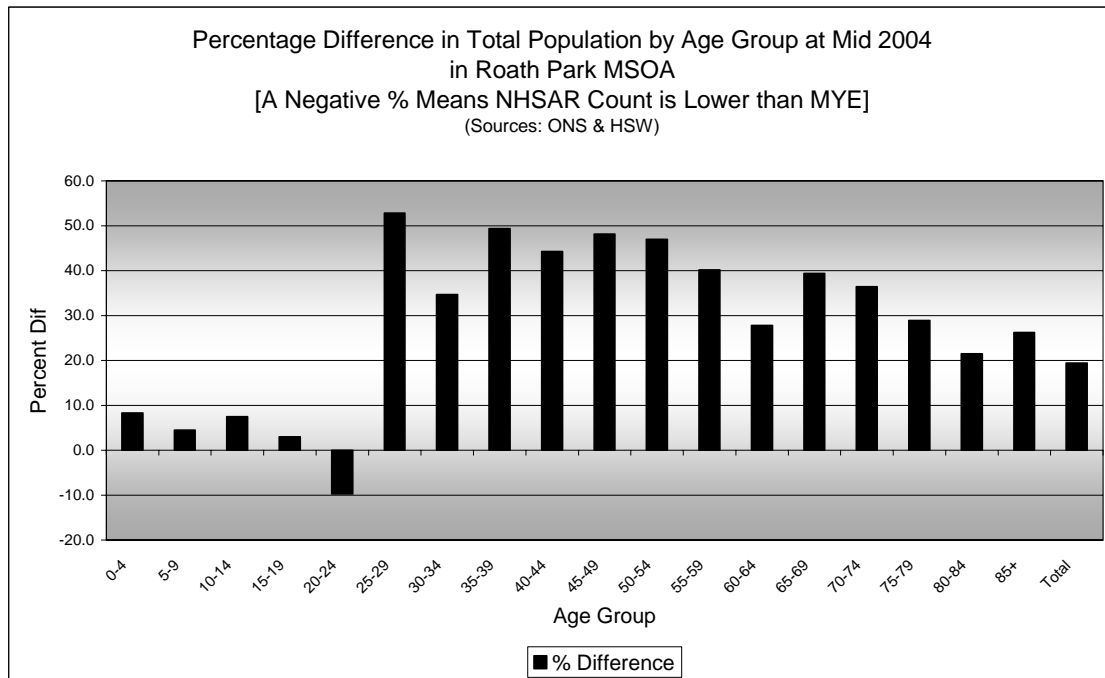
## Broad Age Group Comparisons

| Comparison of Population Sources by Broad Age Group for Mid 2004 in Roath Park MSOA |      |       |       |                            |                        |          |
|---|------|-------|-------|----------------------------|------------------------|----------|
|   | 0-15 | 16-29 | 30-44 | 45-64 Males, 45-59 Females | 65+ Males, 60+ Females | All Ages |
| <b>MYE</b>  | 900  | 3,900 | 1,400 | 800                        | 600                    | 7,500    |
| <b>NHSAR</b>  | 900  | 4,200 | 2,000 | 1,200                      | 700                    | 9,000    |
| <b>Difference #</b>   | 43   | 314   | 572   | 370                        | 165                    | 1,464    |
| <b>Difference %</b>   | 5.0  | 8.0   | 41.4  | 44.7                       | 29.9                   | 19.4     |

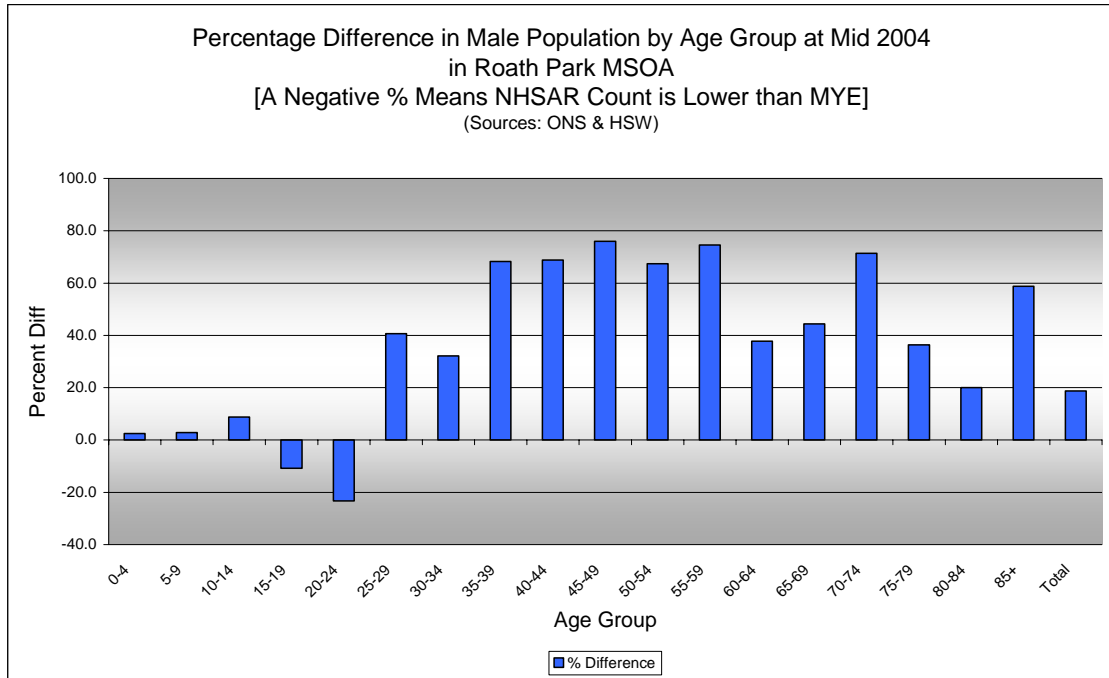
| Comparison of Broad Population Age Structures for Mid 2004 by Percentage of Total Population in Roath Park MSOA |      |       |       |                            |                        |          |
|---|------|-------|-------|----------------------------|------------------------|----------|
|   | 0-15 | 16-29 | 30-44 | 45-64 Males, 45-59 Females | 65+ Males, 60+ Females | All Ages |
| <b>MYE</b>  | 11.4 | 52.0  | 18.3  | 11.0                       | 7.3                    | 100.0    |
| <b>NHSAR</b>  | 10.0 | 47.0  | 21.7  | 13.3                       | 8.0                    | 100.0    |



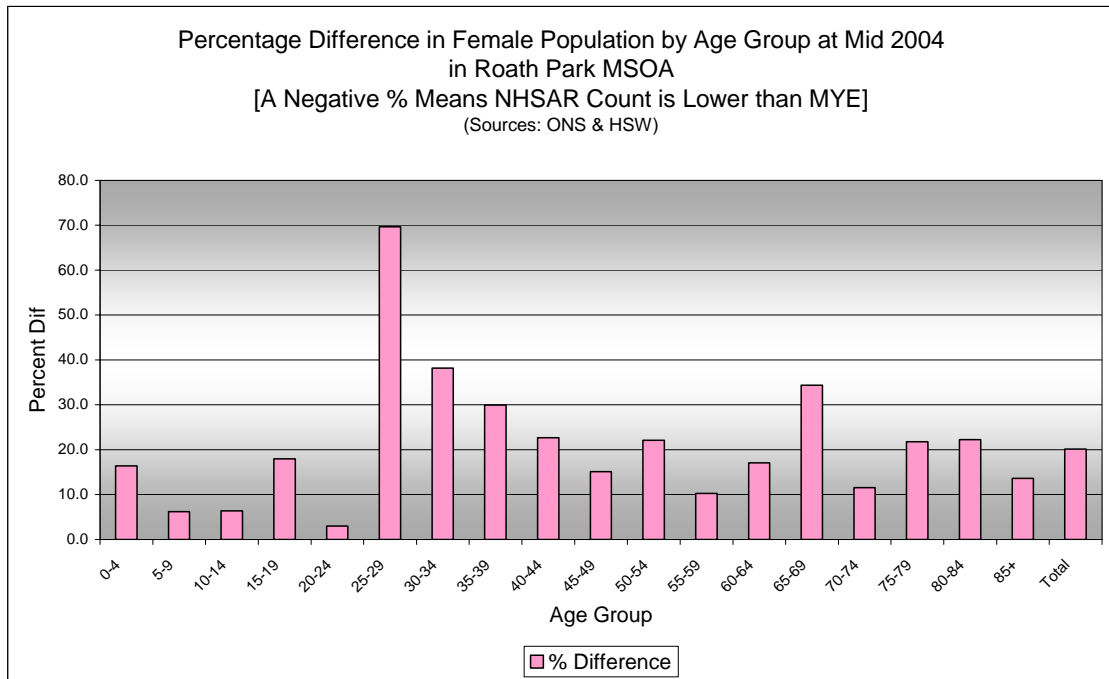
## Quinary Age Group Comparisons – 2004 NHSAR Minus MYE



| Comparison of Total Population by Age Group at Mid 2004 in MSOA<br>[Difference = NHSAR Minus MYE] (Sources: ONS & HSW) |               |                 |              |              |
|--|---------------|-----------------|--------------|--------------|
| Age  | Persons (MYE) | Persons (NHSAR) | # Difference | % Difference |
| 0-4  | 300           | 300             | 23           | 8.3          |
| 5-9  | 300           | 300             | 12           | 4.5          |
| 10-14  | 300           | 300             | 19           | 7.5          |
| 15-19  | 500           | 500             | 15           | 3.0          |
| 20-24  | 2,500         | 2,200           | -241         | -9.7         |
| 25-29  | 1,000         | 1,500           | 529          | 52.8         |
| 30-34  | 600           | 900             | 221          | 34.7         |
| 35-39  | 400           | 600             | 208          | 49.4         |
| 40-44  | 300           | 500             | 143          | 44.3         |
| 45-49  | 300           | 400             | 133          | 48.2         |
| 50-54  | 300           | 400             | 118          | 47.0         |
| 55-59  | 200           | 300             | 88           | 40.2         |
| 60-64  | 200           | 200             | 44           | 27.8         |
| 65-69  | 100           | 200             | 50           | 39.4         |
| 70-74  | 100           | 200             | 43           | 36.4         |
| 75-79  | 100           | 100             | 26           | 28.9         |
| 80-84  | 100           | 100             | 17           | 21.5         |
| 85+  | 100           | 100             | 16           | 26.2         |
| <b>Total</b>   | <b>7,500</b>  | <b>9,000</b>    | <b>1,464</b> | <b>19.4</b>  |

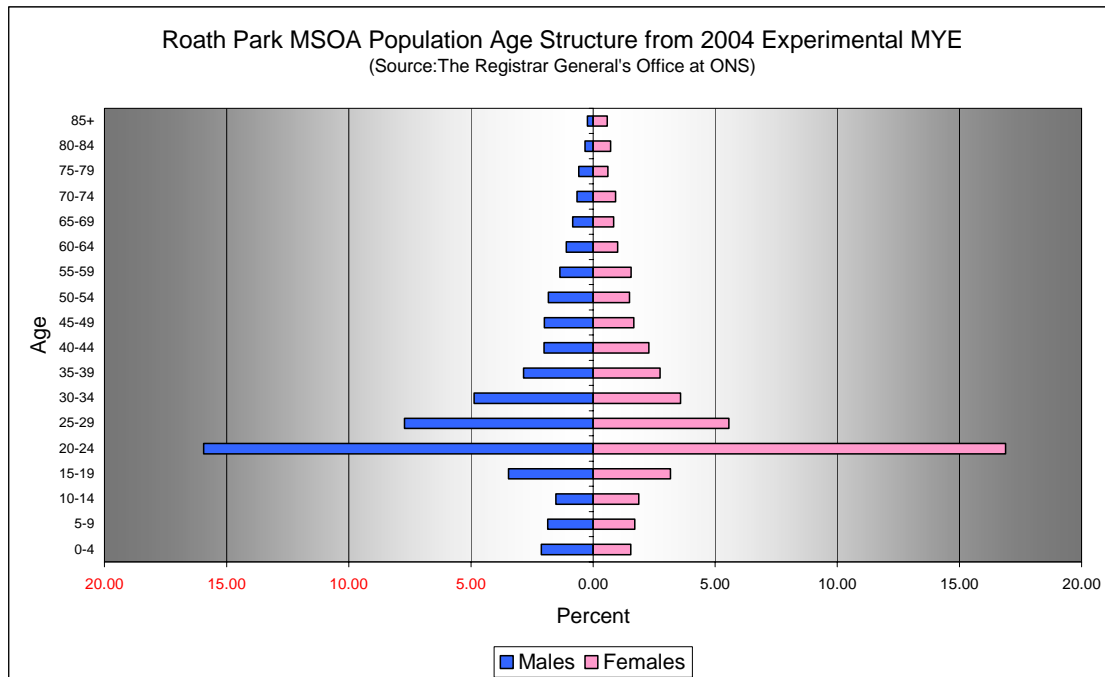


| <b>Comparison of Male Population by Age Group at Mid 2004 in Roath Park MSOA</b><br>[Difference = NHSAR Minus MYE] (Sources: ONS & HSW) |              |               |              |              |
|---|--------------|---------------|--------------|--------------|
| Age   | Males (MYE)  | Males (NHSAR) | # Difference | % Difference |
| 0-4   | 200          | 200           | 4            | 2.5          |
| 5-9   | 100          | 100           | 4            | 2.9          |
| 10-14   | 100          | 100           | 10           | 8.8          |
| 15-19   | 300          | 200           | -28          | -10.8        |
| 20-24   | 1,200        | 900           | -279         | -23.3        |
| 25-29   | 600          | 800           | 237          | 40.7         |
| 30-34   | 400          | 500           | 118          | 32.2         |
| 35-39   | 200          | 400           | 146          | 68.2         |
| 40-44   | 200          | 300           | 104          | 68.9         |
| 45-49   | 200          | 300           | 114          | 76.0         |
| 50-54   | 100          | 200           | 93           | 67.4         |
| 55-59   | 100          | 200           | 76           | 74.5         |
| 60-64   | 100          | 100           | 31           | 37.8         |
| 65-69   | 100          | 100           | 28           | 44.4         |
| 70-74   | 50           | 100           | 35           | 71.4         |
| 75-79   | 50           | 100           | 16           | 36.4         |
| 80-84   | 50           | 50            | 5            | 20.0         |
| 85+   | 50           | 50            | 10           | 58.8         |
| <b>Total</b>  | <b>3,900</b> | <b>4,600</b>  | <b>724</b>   | <b>18.8</b>  |



| <b>Comparison of Female Population by Age Group at Mid 2004 in Roath Park MSOA</b><br>[Difference = NHSAR Minus MYE] (Sources: ONS & HSW) |               |                 |              |              |
|---|---------------|-----------------|--------------|--------------|
| Age   | Females (MYE) | Females (NHSAR) | # Difference | % Difference |
| 0-4   | 100           | 100             | 19           | 16.4         |
| 5-9   | 100           | 100             | 8            | 6.2          |
| 10-14   | 100           | 200             | 9            | 6.4          |
| 15-19   | 200           | 300             | 43           | 18.0         |
| 20-24   | 1,300         | 1,300           | 38           | 3.0          |
| 25-29   | 400           | 700             | 292          | 69.7         |
| 30-34   | 300           | 400             | 103          | 38.1         |
| 35-39   | 200           | 300             | 62           | 30.0         |
| 40-44   | 200           | 200             | 39           | 22.7         |
| 45-49   | 100           | 100             | 19           | 15.1         |
| 50-54   | 100           | 100             | 25           | 22.1         |
| 55-59   | 100           | 100             | 12           | 10.3         |
| 60-64   | 100           | 100             | 13           | 17.1         |
| 65-69   | 100           | 100             | 22           | 34.4         |
| 70-74   | 100           | 100             | 8            | 11.6         |
| 75-79   | 50            | 100             | 10           | 21.7         |
| 80-84   | 50            | 100             | 12           | 22.2         |
| 85+   | 50            | 50              | 6            | 13.6         |
| <b>Total</b>  | <b>3,700</b>  | <b>4,400</b>    | <b>740</b>   | <b>20.1</b>  |

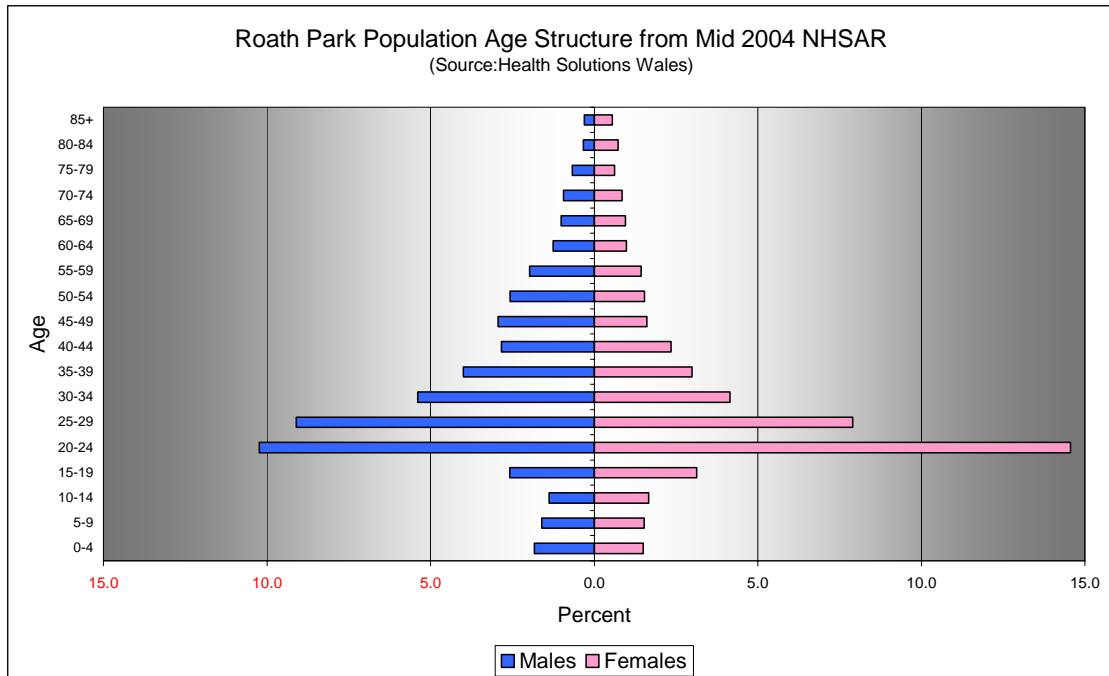
## Quinary Population Age Structure - 2004 MYE



| Roath Park MSOA Population Age Structure 2004 MYE<br>(Source: ONS) |              |              |              |
|--|--------------|--------------|--------------|
| Age  | Males        | Females      | Persons      |
| 0-4  | 200          | 100          | 300          |
| 5-9  | 100          | 100          | 300          |
| 10-14  | 100          | 100          | 300          |
| 15-19  | 300          | 200          | 500          |
| 20-24  | 1,200        | 1,300        | 2,500        |
| 25-29  | 600          | 400          | 1,000        |
| 30-34  | 400          | 300          | 600          |
| 35-39  | 200          | 200          | 400          |
| 40-44  | 200          | 200          | 300          |
| 45-49  | 200          | 100          | 300          |
| 50-54  | 100          | 100          | 300          |
| 55-59  | 100          | 100          | 200          |
| 60-64  | 100          | 100          | 200          |
| 65-69  | 100          | 100          | 100          |
| 70-74  | 50           | 100          | 100          |
| 75-79  | 50           | 50           | 100          |
| 80-84  | 50           | 50           | 100          |
| 85+  | 50           | 50           | 100          |
| <b>Total</b>   | <b>3,900</b> | <b>3,700</b> | <b>7,500</b> |

| Roath Park MSOA Population Age Structure 2004 MYE<br>- Percentage of total Persons<br>(Source: ONS) |             |             |              |
|---|-------------|-------------|--------------|
| Age   | Males       | Females     | Persons      |
| 0-4   | 2.1         | 1.5         | 3.7          |
| 5-9   | 1.9         | 1.7         | 3.6          |
| 10-14   | 1.5         | 1.9         | 3.4          |
| 15-19   | 3.5         | 3.2         | 6.6          |
| 20-24   | 15.9        | 16.9        | 32.8         |
| 25-29   | 7.7         | 5.6         | 13.3         |
| 30-34   | 4.9         | 3.6         | 8.5          |
| 35-39   | 2.8         | 2.7         | 5.6          |
| 40-44   | 2.0         | 2.3         | 4.3          |
| 45-49   | 2.0         | 1.7         | 3.7          |
| 50-54   | 1.8         | 1.5         | 3.3          |
| 55-59   | 1.4         | 1.6         | 2.9          |
| 60-64   | 1.1         | 1.0         | 2.1          |
| 65-69   | 0.8         | 0.8         | 1.7          |
| 70-74   | 0.7         | 0.9         | 1.6          |
| 75-79   | 0.6         | 0.6         | 1.2          |
| 80-84   | 0.3         | 0.7         | 1.0          |
| 85+   | 0.2         | 0.6         | 0.8          |
| <b>Total</b>  | <b>51.2</b> | <b>48.8</b> | <b>100.0</b> |

## Quinary Population Age Structure Mid 2004 NHSAR



| Roath Park MSOA<br>Population Age Structure<br>- NHSAR Mid 2004<br>(Source: HSW) |              |              |              |
|--|--------------|--------------|--------------|
| Age  | Males        | Females      | Persons      |
| 0-4  | 200          | 100          | 300          |
| 5-9  | 100          | 100          | 300          |
| 10-14  | 100          | 200          | 300          |
| 15-19  | 200          | 300          | 500          |
| 20-24  | 900          | 1,300        | 2,200        |
| 25-29  | 800          | 700          | 1,500        |
| 30-34  | 500          | 400          | 900          |
| 35-39  | 400          | 300          | 600          |
| 40-44  | 300          | 200          | 500          |
| 45-49  | 300          | 100          | 400          |
| 50-54  | 200          | 100          | 400          |
| 55-59  | 200          | 100          | 300          |
| 60-64  | 100          | 100          | 200          |
| 65-69  | 100          | 100          | 200          |
| 70-74  | 100          | 100          | 200          |
| 75-79  | 100          | 100          | 100          |
| 80-84  | 50           | 100          | 100          |
| 85+  | 50           | 50           | 100          |
| <b>Total</b>   | <b>4,600</b> | <b>4,400</b> | <b>9,000</b> |

| Roath Park MSOA<br>Population Age Structure % of Total<br>Persons - NHSAR Mid 2004<br>(Source: HSW) |             |             |              |
|---|-------------|-------------|--------------|
| Age   | Males       | Females     | Persons      |
| 0-4   | 1.8         | 1.5         | 3.3          |
| 5-9   | 1.6         | 1.5         | 3.1          |
| 10-14   | 1.4         | 1.7         | 3.0          |
| 15-19   | 2.6         | 3.1         | 5.7          |
| 20-24   | 10.2        | 14.6        | 24.8         |
| 25-29   | 9.1         | 7.9         | 17.0         |
| 30-34   | 5.4         | 4.1         | 9.5          |
| 35-39   | 4.0         | 3.0         | 7.0          |
| 40-44   | 2.8         | 2.3         | 5.2          |
| 45-49   | 2.9         | 1.6         | 4.5          |
| 50-54   | 2.6         | 1.5         | 4.1          |
| 55-59   | 2.0         | 1.4         | 3.4          |
| 60-64   | 1.3         | 1.0         | 2.2          |
| 65-69   | 1.0         | 1.0         | 2.0          |
| 70-74   | 0.9         | 0.9         | 1.8          |
| 75-79   | 0.7         | 0.6         | 1.3          |
| 80-84   | 0.3         | 0.7         | 1.1          |
| 85+   | 0.3         | 0.6         | 0.9          |
| <b>Total</b>  | <b>50.9</b> | <b>49.1</b> | <b>100.0</b> |