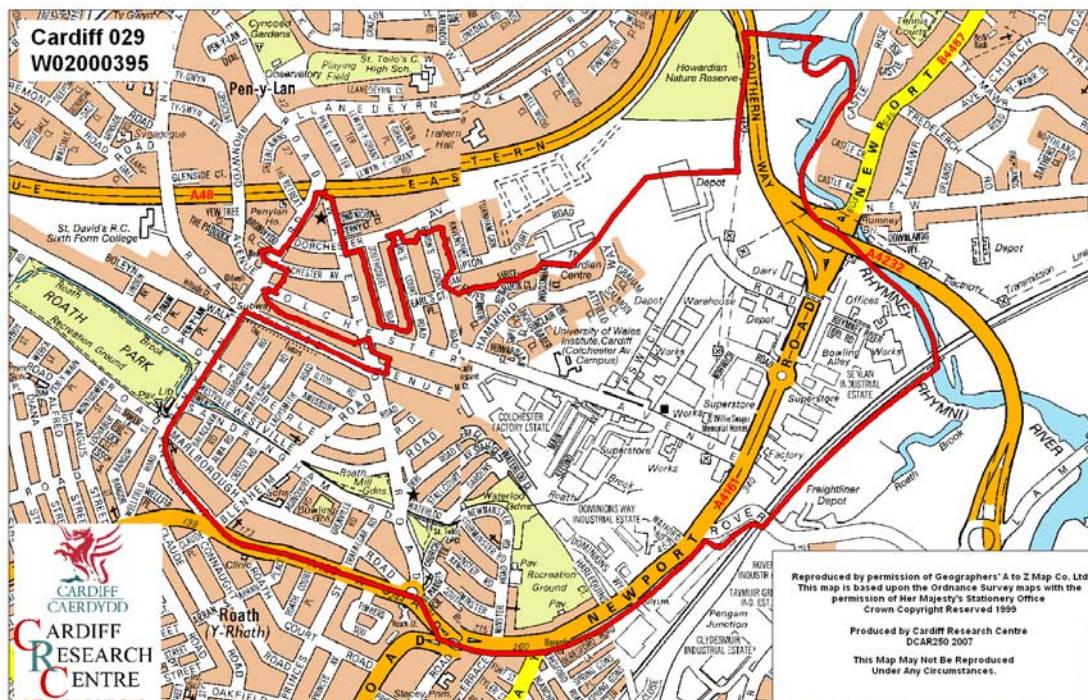


Roath Middle Super Output Area

A comparison of Population Age Structure's for Mid 2004 from the National Statistics experimental Mid Year Estimate and the National Health Service Administrative Records (NHSAR)

Figure: Roath MSOA (Cardiff Central Locality)



Disclosure Control: Due to a requirement to observe the Registrar General's disclosure control protocols for experimental and official Mid Year Estimates of population it has been necessary to round population figures provided in this profile to the nearest 100 persons. Due to the danger of disclosure by difference the NHSAR population figures in this brief have also been rounded to the nearest 100 persons. For both datasets, when the population estimate was less than 50 persons, the value of 50 has been used. However, it is important to note that all graphics and the percentages presented in this profile have been produced using raw un-rounded estimates. The difference between NHSAR and MYE population estimates are also presented here in their un-rounded raw format.

Summary Key Statistics Page

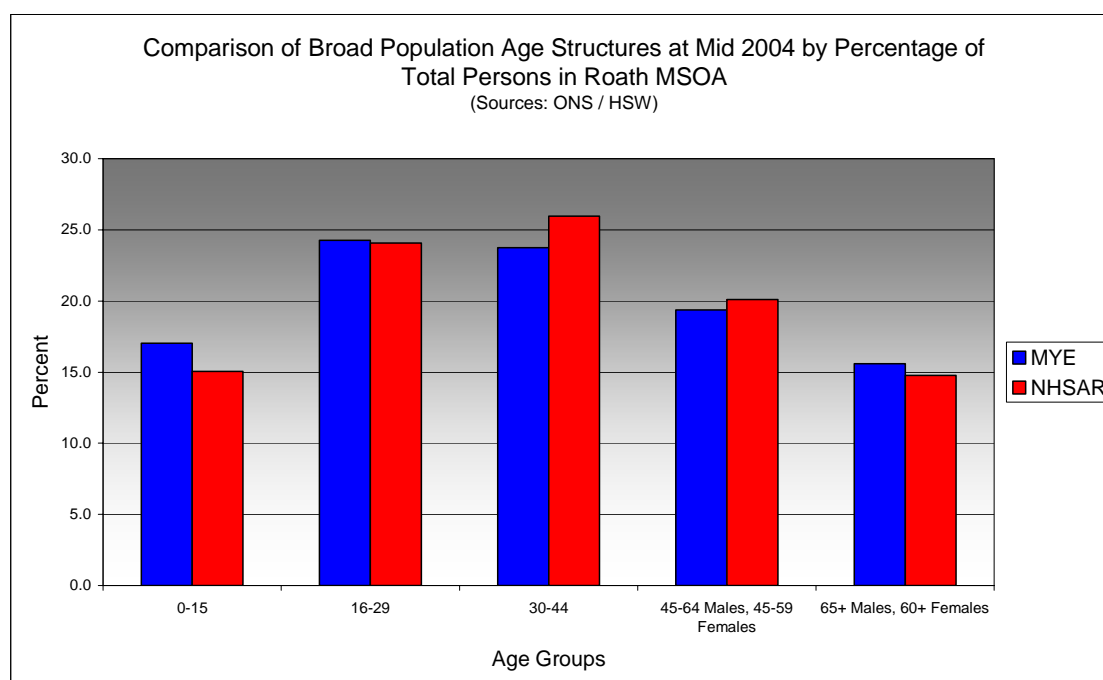
- In Roath total NHSAR population at Mid 2004 was 14.6% (approximately 800 persons) higher than the experimental Mid Year Estimate.
- Total male NHSAR population was 18.8% higher, while total female population was 11.4% higher than the experimental Mid Year Estimate.
- NHSAR population counts showed the greatest variance from the Experimental MYEs in the following age groups: 25 to 29 years 43.1% higher and those aged 30 to 34 years 33.1% higher.
- Roath is ranked 36th (MYE) and 39th (NHSAR) out of 47 MSOAs in Cardiff for it's total dependency ratio.
- Within the Cardiff Central Locality Roath is ranked 5th (MYE) & 6th (NHSAR) out of 11 MSOAs for it's total dependency ratio.
- Roath is ranked 39th (MYE & NHSAR) out of 47 MSOAs in Cardiff for the total number of younger dependents aged 0 to 14.
- Within it's locality Roath is ranked 6th (MYE & NHSAR) out of 11 MSOAs for the total number of younger dependents aged 0 to 14.
- Roath is ranked 38th (MYE) and 20th (NHSAR) out of 47 MSOAs for the total number of older dependents aged 65 plus.
- Within it's locality Roath is ranked 6th (MYE) and 5th (NHSAR) out of 11 MSOAs for the total number of older dependents aged 65 plus.
- The majority of dependent age groups (0 to 14 + 65 and over) are younger dependents aged 0 to 14, representing 54.0% (MYE) and 52.1% (NHSAR) of total dependents.

Dependency Ratios at Mid 2004 in Roath MSOA (Sources: Derived from Data Supplied by ONS & HSW)		
	MYE	NHSAR
Dependents Aged 0 - 14	900	900
Dependents Aged 65 Plus	800	900
Total Dependents	1,700	1,800
Persons Aged 15 to 64	4,000	4,700
Total Persons	5,700	6,500
Roath Dependency Ratio	0.42	0.38
Locality Dependency Ratio	0.33	0.30
Cardiff Dependency Ratio	0.47	0.43
Wales Dependency Ratio	0.57	0.52

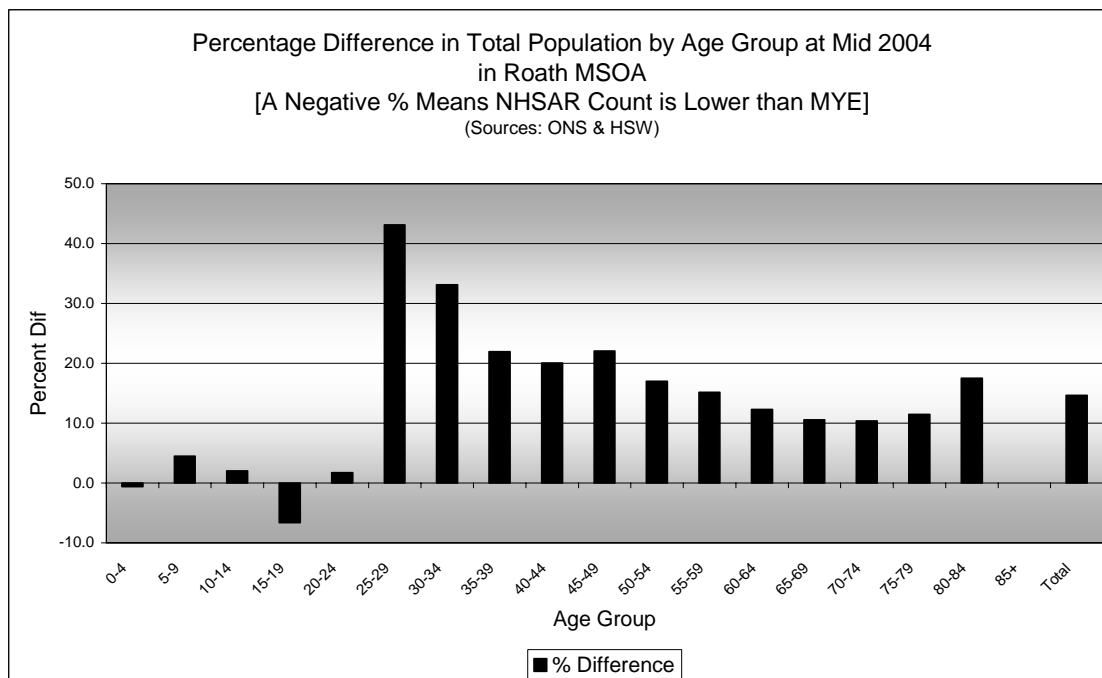
Broad Age Group Comparisons

Comparison of Population Sources by Broad Age Group for Mid 2004 in Roath MSOA						
	0-15	16-29	30-44	45-64 Males, 45-59 Females	65+ Males, 60+ Females	All Ages
MYE	1,000	1,400	1,400	1,100	900	5,700
NHSAR	1,000	1,600	1,700	1,300	1,000	6,500
Difference #	13	190	342	209	77	831
Difference %	1.3	13.8	25.3	19.0	8.7	14.6

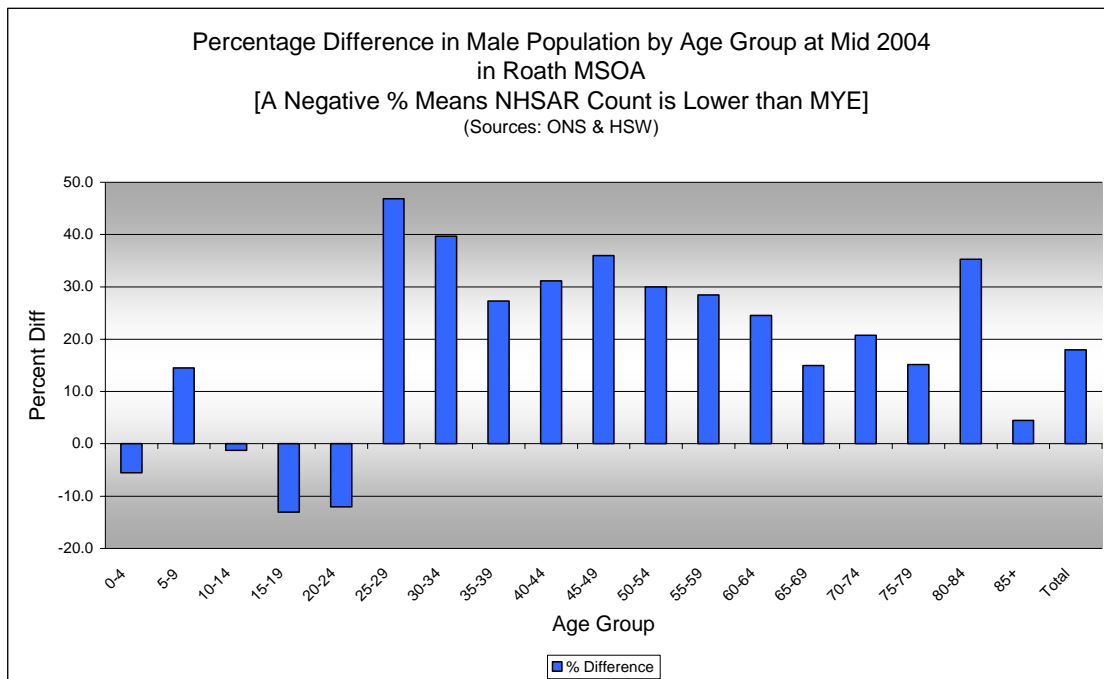
Comparison of Broad Population Age Structures for Mid 2004 by Percentage of Total Population in Roath MSOA						
	0-15	16-29	30-44	45-64 Males, 45-59 Females	65+ Males, 60+ Females	All Ages
MYE	17.0	24.3	23.8	19.4	15.6	100.0
NHSAR	15.1	24.1	26.0	20.1	14.8	100.0



Quinary Age Group Comparisons – 2004 NHSAR Minus MYE

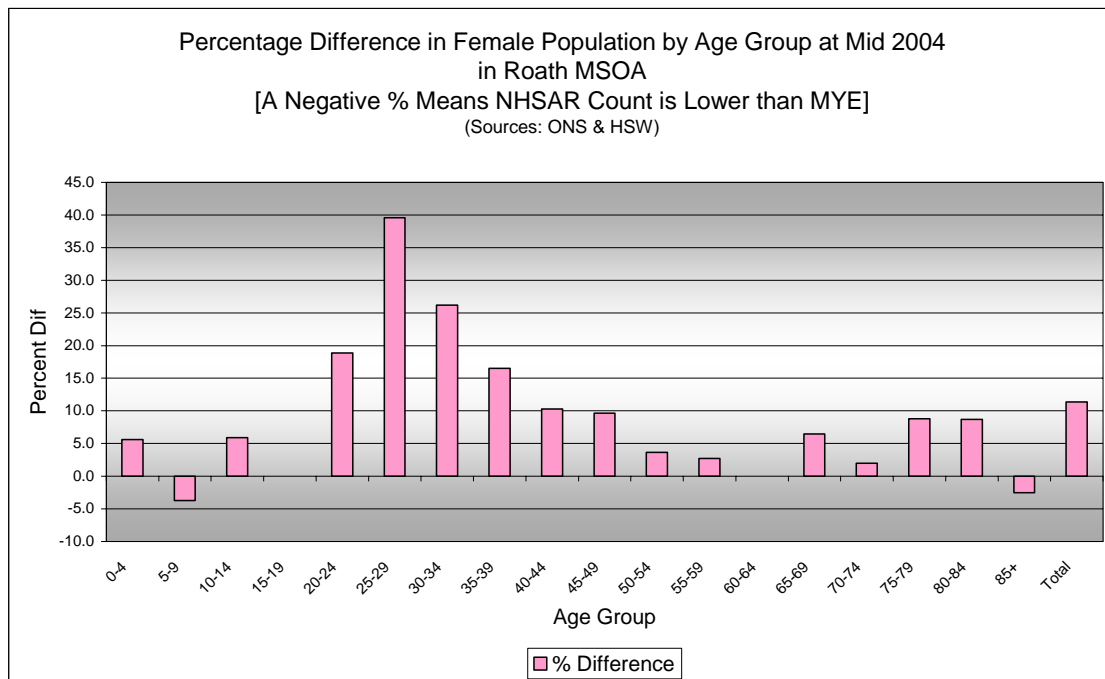


Comparison of Total Population by Age Group at Mid 2004 in Roath MSOA [Difference = NHSAR Minus MYE] (Sources: ONS & HSW)				
Age	Persons (MYE)	Persons (NHSAR)	# Difference	% Difference
0-4	300	300	-2	-0.6
5-9	300	300	13	4.5
10-14	300	300	6	2.0
15-19	300	300	-23	-6.6
20-24	600	600	11	1.7
25-29	500	700	198	43.1
30-34	500	600	159	33.1
35-39	500	600	99	22.0
40-44	400	500	84	20.0
45-49	400	500	82	22.0
50-54	300	400	57	17.0
55-59	300	300	43	15.1
60-64	200	200	27	12.3
65-69	200	200	22	10.6
70-74	200	200	19	10.4
75-79	200	200	18	11.5
80-84	100	100	18	17.5
85+	100	100	0	0.0
Total	5,700	6,500	831	14.6



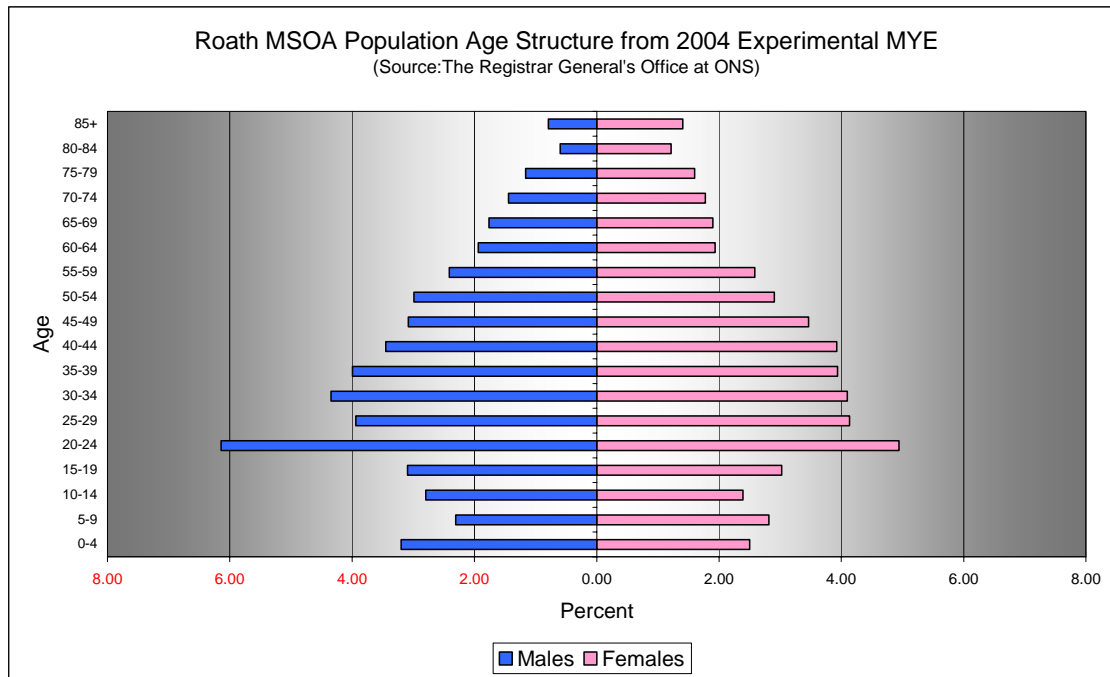
Comparison of Male Population by Age Group at Mid 2004 in Roath MSOA
[Difference = NHSAR Minus MYE] (Sources: ONS & HSW)

Age	Males (MYE)	Males (NHSAR)	# Difference	% Difference
0-4	200	200	-10	-5.5
5-9	100	200	19	14.5
10-14	200	200	-2	-1.3
15-19	200	200	-23	-13.1
20-24	300	300	-42	-12.0
25-29	200	300	105	46.9
30-34	200	300	98	39.7
35-39	200	300	62	27.3
40-44	200	300	61	31.1
45-49	200	200	63	36.0
50-54	200	200	51	30.0
55-59	100	200	39	28.5
60-64	100	100	27	24.5
65-69	100	100	15	15.0
70-74	100	100	17	20.7
75-79	100	100	10	15.2
80-84	50	50	12	35.3
85+	50	50	2	4.4
Total	2,800	3,300	504	17.9



Comparison of Female Population by Age Group at Mid 2004 in Roath MSOA [Difference = NHSAR Minus MYE] (Sources: ONS & HSW)				
Age	Females (MYE)	Females (NHSAR)	# Difference	% Difference
0-4	100	200	8	5.6
5-9	200	200	-6	-3.8
10-14	100	100	8	5.9
15-19	200	200	0	0.0
20-24	300	300	53	18.9
25-29	200	300	93	39.6
30-34	200	300	61	26.2
35-39	200	300	37	16.5
40-44	200	200	23	10.3
45-49	200	200	19	9.6
50-54	200	200	6	3.6
55-59	100	200	4	2.7
60-64	100	100	0	0.0
65-69	100	100	7	6.5
70-74	100	100	2	2.0
75-79	100	100	8	8.8
80-84	100	100	6	8.7
85+	100	100	-2	-2.5
Total	2,900	3,200	327	11.4

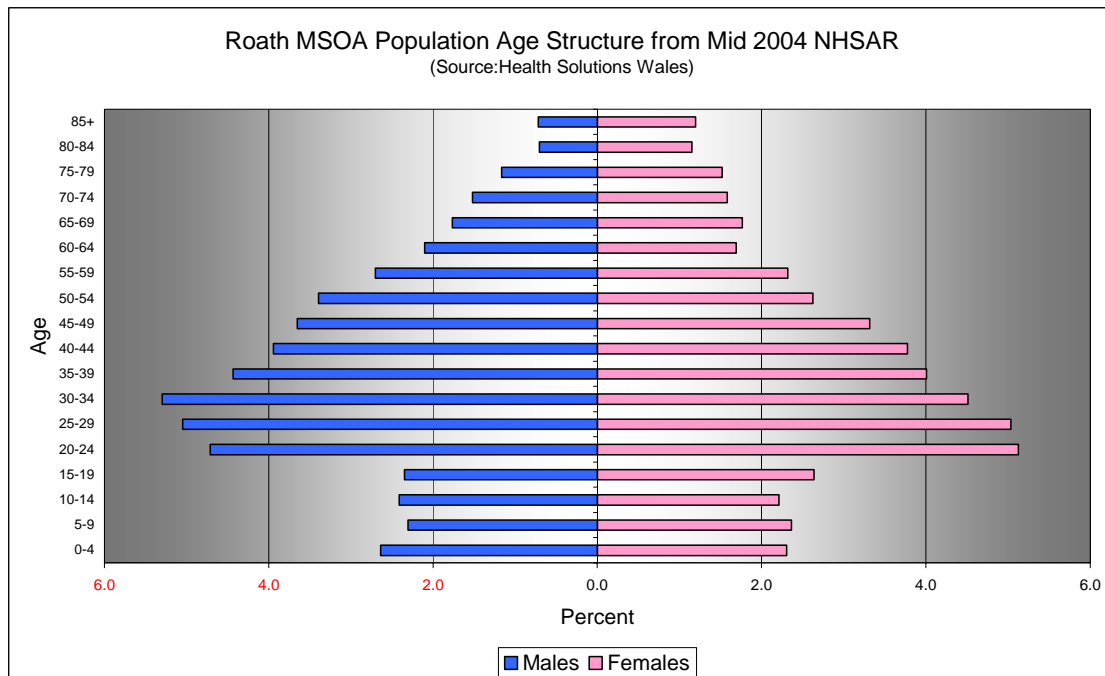
Quinary Population Age Structure - 2004 MYE



Roath MSOA Population Age Structure 2004 MYE (Source: ONS)			
Age	Males	Females	Persons
0-4	200	100	300
5-9	100	200	300
10-14	200	100	300
15-19	200	200	300
20-24	300	300	600
25-29	200	200	500
30-34	200	200	500
35-39	200	200	500
40-44	200	200	400
45-49	200	200	400
50-54	200	200	300
55-59	100	100	300
60-64	100	100	200
65-69	100	100	200
70-74	100	100	200
75-79	100	100	200
80-84	50	100	100
85+	50	100	100
Total	2,800	2,900	5,700

Roath MSOA Population Age Structure 2004 MYE - Percentage of Total Persons (Source: ONS)			
Age	Males	Females	Persons
0-4	3.2	2.5	5.7
5-9	2.3	2.8	5.1
10-14	2.8	2.4	5.2
15-19	3.1	3.0	6.1
20-24	6.1	4.9	11.1
25-29	3.9	4.1	8.1
30-34	4.3	4.1	8.4
35-39	4.0	3.9	7.9
40-44	3.4	3.9	7.4
45-49	3.1	3.5	6.5
50-54	3.0	2.9	5.9
55-59	2.4	2.6	5.0
60-64	1.9	1.9	3.9
65-69	1.8	1.9	3.7
70-74	1.4	1.8	3.2
75-79	1.2	1.6	2.8
80-84	0.6	1.2	1.8
85+	0.8	1.4	2.2
Total	49.4	50.6	100.0

Quinary Population Age Structure Mid 2004 NHSAR



Roath MSOA Population Age Structure - NHSAR Mid 2004 (Source: HSW)			
Age	Males	Females	Persons
0-4	200	200	300
5-9	200	200	300
10-14	200	100	300
15-19	200	200	300
20-24	300	300	600
25-29	300	300	700
30-34	300	300	600
35-39	300	300	600
40-44	300	200	500
45-49	200	200	500
50-54	200	200	400
55-59	200	200	300
60-64	100	100	200
65-69	100	100	200
70-74	100	100	200
75-79	100	100	200
80-84	50	100	100
85+	50	100	100
Total	3,300	3,200	6,500

Roath MSOA Population Age Structure % of Total Persons - NHSAR Mid 2004 (Source: HSW)			
Age	Males	Females	Persons
0-4	2.6	2.3	4.9
5-9	2.3	2.4	4.7
10-14	2.4	2.2	4.6
15-19	2.3	2.6	5.0
20-24	4.7	5.1	9.8
25-29	5.0	5.0	10.1
30-34	5.3	4.5	9.8
35-39	4.4	4.0	8.4
40-44	3.9	3.8	7.7
45-49	3.7	3.3	7.0
50-54	3.4	2.6	6.0
55-59	2.7	2.3	5.0
60-64	2.1	1.7	3.8
65-69	1.8	1.8	3.5
70-74	1.5	1.6	3.1
75-79	1.2	1.5	2.7
80-84	0.7	1.2	1.9
85+	0.7	1.2	1.9
Total	50.9	49.1	100.0