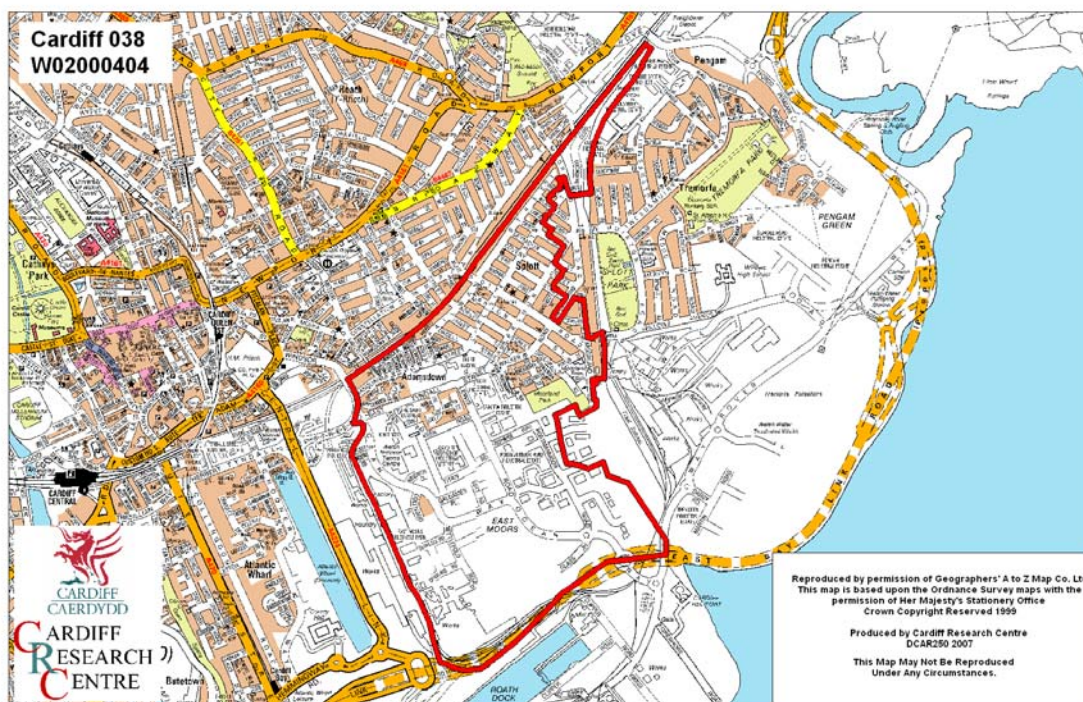


Splott Middle Super Output Area

A comparison of Population Age Structure's for Mid 2004 from the National Statistics experimental Mid Year Estimate and the National Health Service Administrative Records (NHSAR)

Figure: Splott MSOA (Cardiff South East Locality)



Disclosure Control: Due to a requirement to observe the Registrar General's disclosure control protocols for experimental and official Mid Year Estimates of population it has been necessary to round population figures provided in this profile to the nearest 100 persons. Due to the danger of disclosure by difference the NHSAR population figures in this brief have also been rounded to the nearest 100 persons. For both datasets, when the population estimate was less than 50 persons, the value of 50 has been used. However, it is important to note that all graphics and the percentages presented in this profile have been produced using raw un-rounded estimates. The difference between NHSAR and MYE population estimates are also presented here in their un-rounded raw format.

Summary Key Statistics

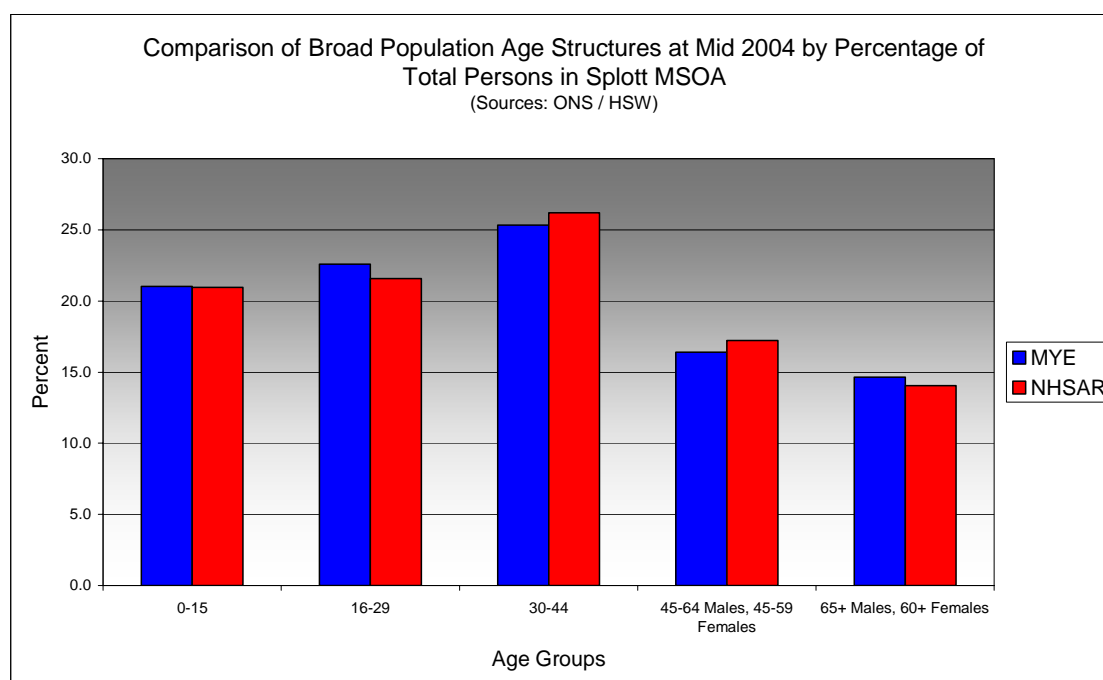
- In Splott total NHSAR population at Mid 2004 was 5.8% (approximately 350 persons) higher than the experimental Mid Year Estimate.
- Total male NHSAR population was 9.0% higher, while total female population was 2.9% higher than the experimental Mid Year Estimate.
- NHSAR population counts showed the greatest variance from the Experimental MYEs in the following age groups: 55 to 59 years 16.3% higher and those aged 50 to 54 years 13.9% higher.
- Splott is ranked 31st (MYE) and 26th (NHSAR) out of 47 MSOAs in Cardiff for it's total dependency ratio.
- Within the Cardiff South East Locality Splott is ranked 9th (MYE) and 8th (NHSAR) out of 11 MSOAs for it's total dependency ratio.
- Splott is ranked 27th (MYE) and 25th (NHSAR) out of 47 MSOAs in Cardiff for the total number of younger dependents aged 0 to 14.
- Within its locality Splott is ranked 8th (MYE & NHSAR) out of 11 MSOAs for the total number of younger dependents aged 0 to 14.
- Splott is ranked 32nd (MYE) and 36th (NHSAR) out of 47 MSOAs for the total number of older dependents aged 65 plus.
- Within it's locality Splott is ranked 6th (MYE) and 8th (NHSAR) out of 11 MSOAs for the total number of older dependents aged 65 plus.
- The majority of dependent age groups (0 to 14 + 65 and over) are younger dependents aged 0 to 14, representing 60.4% (MYE) and 61.5% (NHSAR) of total dependents.

Dependency Ratios at Mid 2004 in Splott MSOA (Sources: Derived from Data Supplied by ONS & HSW)		
	MYE	NHSAR
Dependents Aged 0 - 14	1,200	1,200
Dependents Aged 65 Plus	800	800
Total Dependents	1,900	2,000
Persons Aged 15 to 64	4,000	4,300
Total Persons	6,000	6,300
Splott Dependency Ratio	0.48	0.46
Locality Dependency Ratio	0.52	0.51
Cardiff Dependency Ratio	0.47	0.43
Wales Dependency Ratio	0.57	0.52

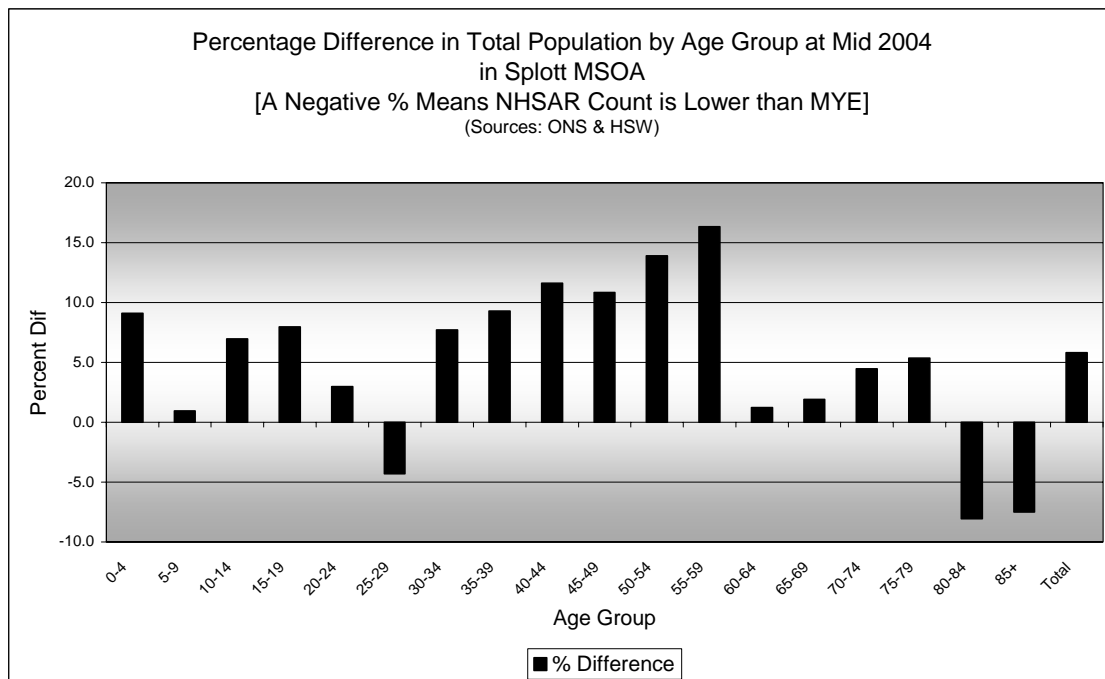
Broad Age Group Comparisons

Comparison of Population Sources by Broad Age Group for Mid 2004 in Splott MSOA						
	0-15	16-29	30-44	45-64 Males, 45-59 Females	65+ Males, 60+ Females	All Ages
MYE	1,300	1,300	1,500	1,000	900	6,000
NHSAR	1,300	1,400	1,700	1,100	900	6,300
Difference #	69	15	142	108	13	347
Difference %	5.5	1.1	9.4	11.0	1.5	5.8

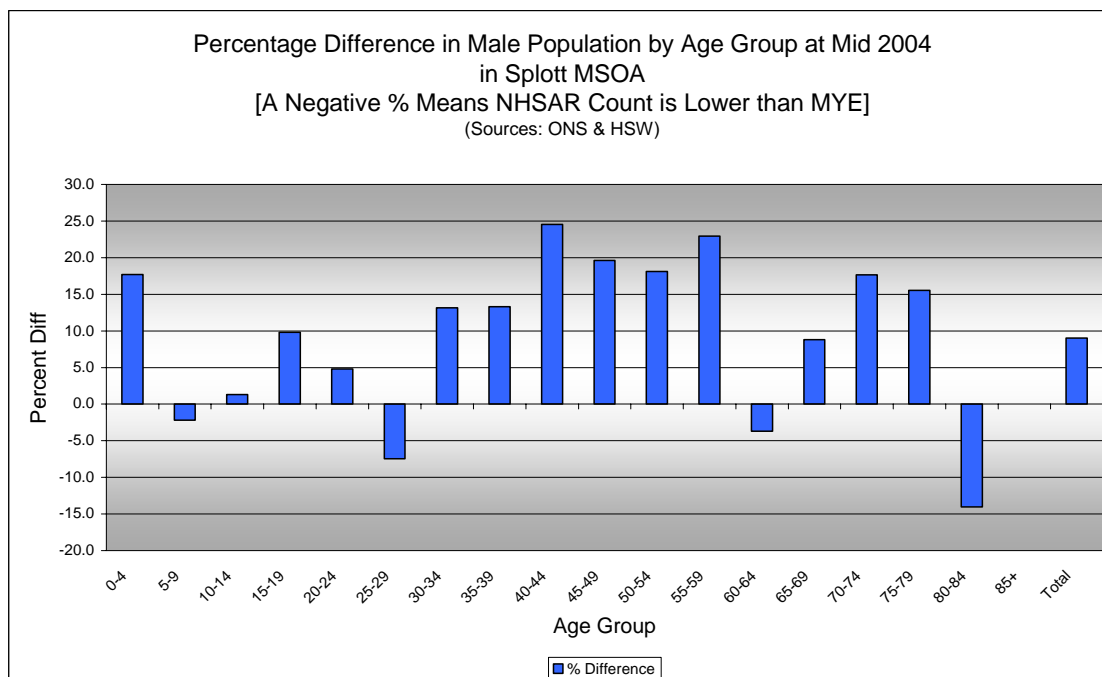
Comparison of Broad Population Age Structures for Mid 2004 by Percentage of Total Population in Splott MSOA						
	0-15	16-29	30-44	45-64 Males, 45-59 Females	65+ Males, 60+ Females	All Ages
MYE	21.0	22.6	25.3	16.4	14.6	100.0
NHSAR	21.0	21.6	26.2	17.2	14.0	100.0



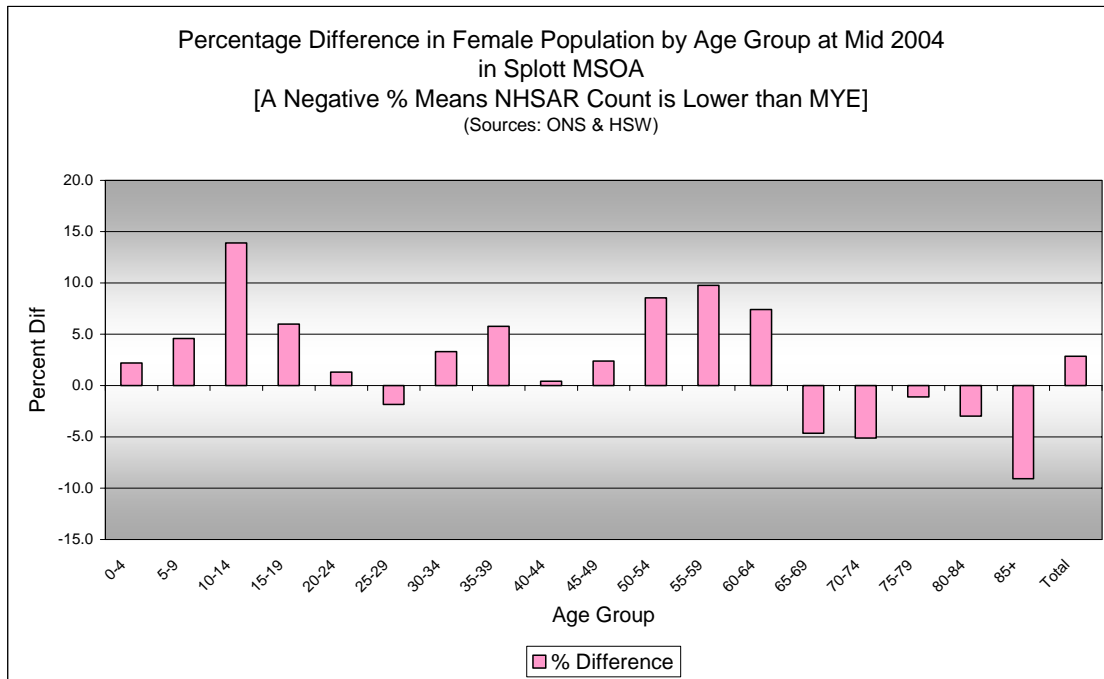
Quinary Age Group Comparisons – 2004 NHSAR Minus MYE



Comparison of Total Population by Age Group at Mid 2004 in Splott MSOA [Difference = NHSAR Minus MYE] (Sources: ONS & HSW)				
Age	Persons (MYE)	Persons (NHSAR)	# Difference	% Difference
0-4	300	400	30	9.1
5-9	400	400	4	0.9
10-14	400	400	29	7.0
15-19	400	400	33	8.0
20-24	400	500	13	3.0
25-29	600	600	-25	-4.3
30-34	500	600	42	7.7
35-39	500	600	48	9.3
40-44	400	500	52	11.6
45-49	300	400	36	10.8
50-54	300	300	37	13.9
55-59	200	300	40	16.3
60-64	200	200	3	1.2
65-69	200	200	4	1.9
70-74	200	200	9	4.5
75-79	100	200	8	5.4
80-84	100	100	-10	-8.1
85+	100	100	-6	-7.5
Total	6,000	6,300	347	5.8

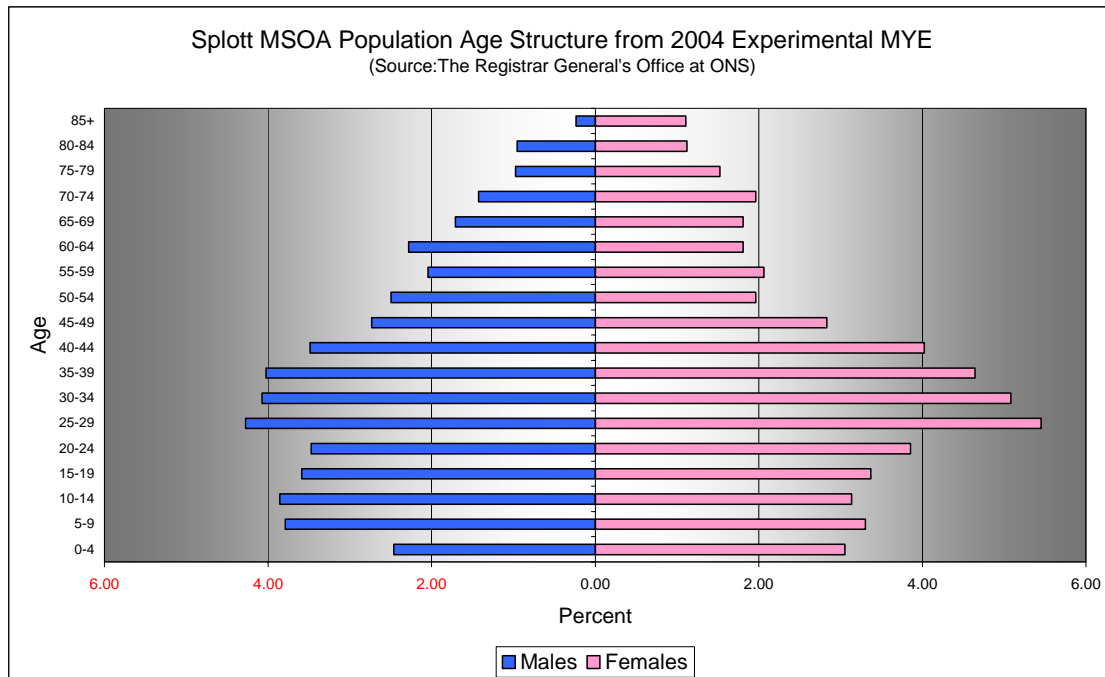


Comparison of Male Population by Age Group at Mid 2004 in Splott MSOA [Difference = NHSAR Minus MYE] (Sources: ONS & HSW)				
Age	Males (MYE)	Males (NHSAR)	# Difference	% Difference
0-4	100	200	26	17.7
5-9	200	200	-5	-2.2
10-14	200	200	3	1.3
15-19	200	200	21	9.8
20-24	200	200	10	4.8
25-29	300	200	-19	-7.5
30-34	200	300	32	13.2
35-39	200	300	32	13.3
40-44	200	300	51	24.5
45-49	200	200	32	19.6
50-54	100	200	27	18.1
55-59	100	200	28	23.0
60-64	100	100	-5	-3.7
65-69	100	100	9	8.8
70-74	100	100	15	17.6
75-79	100	100	9	15.5
80-84	100	50	-8	-14.0
85+	50	50	0	0.0
Total	2,900	3,100	258	9.0



Comparison of Female Population by Age Group at Mid 2004 in Splott MSOA [Difference = NHSAR Minus MYE] (Sources: ONS & HSW)				
Age	Females (MYE)	Females (NHSAR)	# Difference	% Difference
0-4	200	200	4	2.2
5-9	200	200	9	4.6
10-14	200	200	26	13.9
15-19	200	200	12	6.0
20-24	200	200	3	1.3
25-29	300	300	-6	-1.8
30-34	300	300	10	3.3
35-39	300	300	16	5.8
40-44	200	200	1	0.4
45-49	200	200	4	2.4
50-54	100	100	10	8.5
55-59	100	100	12	9.8
60-64	100	100	8	7.4
65-69	100	100	-5	-4.6
70-74	100	100	-6	-5.1
75-79	100	100	-1	-1.1
80-84	100	100	-2	-3.0
85+	100	100	-6	-9.1
Total	3,100	3,200	89	2.9

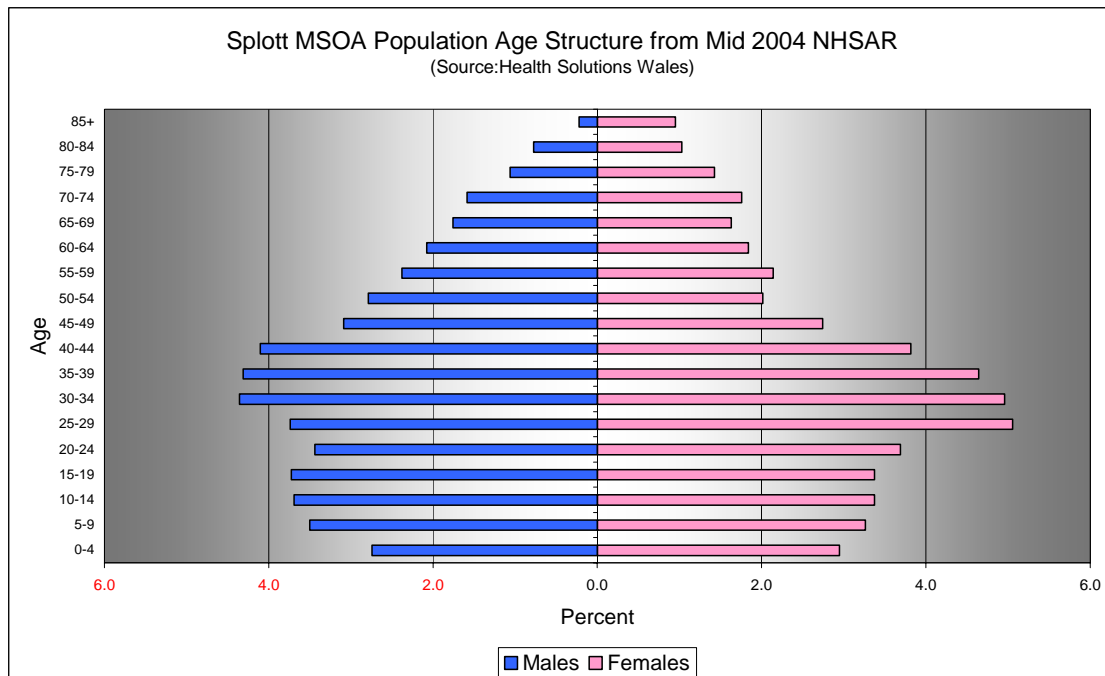
Quinary Population Age Structure - 2004 MYE



Splott MSOA Population Age Structure 2004 MYE (Source: ONS)			
Age	Males	Females	Persons
0-4	100	200	300
5-9	200	200	400
10-14	200	200	400
15-19	200	200	400
20-24	200	200	400
25-29	300	300	600
30-34	200	300	500
35-39	200	300	500
40-44	200	200	400
45-49	200	200	300
50-54	100	100	300
55-59	100	100	200
60-64	100	100	200
65-69	100	100	200
70-74	100	100	200
75-79	100	100	100
80-84	100	100	100
85+	50	100	100
Total	2,900	3,100	6,000

Splott MSOA Population Age Structure 2004 MYE - Percentage of total Persons (Source: ONS)			
Age	Males	Females	Persons
0-4	2.5	3.1	5.5
5-9	3.8	3.3	7.1
10-14	3.9	3.1	7.0
15-19	3.6	3.4	7.0
20-24	3.5	3.9	7.3
25-29	4.3	5.4	9.7
30-34	4.1	5.1	9.2
35-39	4.0	4.6	8.7
40-44	3.5	4.0	7.5
45-49	2.7	2.8	5.6
50-54	2.5	2.0	4.5
55-59	2.0	2.1	4.1
60-64	2.3	1.8	4.1
65-69	1.7	1.8	3.5
70-74	1.4	2.0	3.4
75-79	1.0	1.5	2.5
80-84	1.0	1.1	2.1
85+	0.2	1.1	1.3
Total	47.9	52.1	100.0

Quinary Population Age Structure Mid 2004 NHSAR



Splott MSOA Population Age Structure - NHSAR Mid 2004 (Source: HSW)			
Age	Males	Females	Persons
0-4	200	200	400
5-9	200	200	400
10-14	200	200	400
15-19	200	200	400
20-24	200	200	500
25-29	200	300	600
30-34	300	300	600
35-39	300	300	600
40-44	300	200	500
45-49	200	200	400
50-54	200	100	300
55-59	200	100	300
60-64	100	100	200
65-69	100	100	200
70-74	100	100	200
75-79	100	100	200
80-84	50	100	100
85+	50	100	100
Total	3,100	3,200	6,300

Splott MSOA Population Age Structure % of Total Persons - NHSAR Mid 2004 (Source: HSW)			
Age	Males	Females	Persons
0-4	2.7	2.9	5.7
5-9	3.5	3.3	6.8
10-14	3.7	3.4	7.1
15-19	3.7	3.4	7.1
20-24	3.4	3.7	7.1
25-29	3.7	5.1	8.8
30-34	4.4	5.0	9.3
35-39	4.3	4.6	9.0
40-44	4.1	3.8	7.9
45-49	3.1	2.7	5.8
50-54	2.8	2.0	4.8
55-59	2.4	2.1	4.5
60-64	2.1	1.8	3.9
65-69	1.8	1.6	3.4
70-74	1.6	1.8	3.3
75-79	1.1	1.4	2.5
80-84	0.8	1.0	1.8
85+	0.2	1.0	1.2
Total	49.3	50.7	100.0