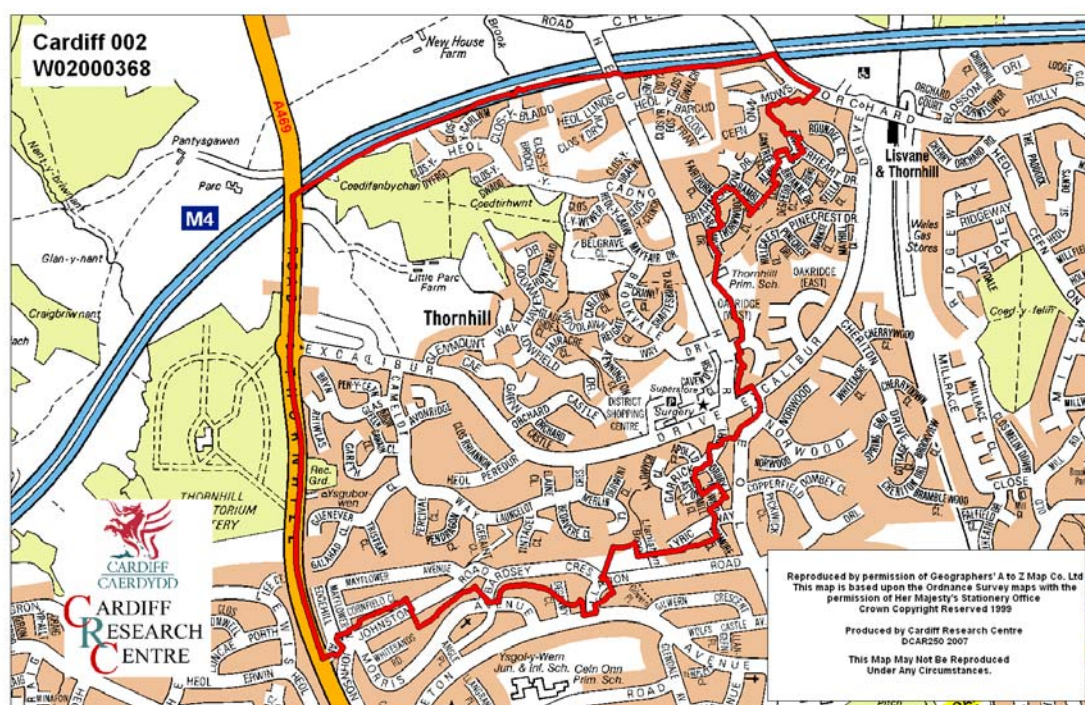


## Thornhill Middle Super Output Area

A comparison of Population Age Structure's for Mid 2004 from the National Statistics experimental Mid Year Estimate and the National Health Service Administrative Records (NHSAR)

Figure: Thornhill MSOA (Cardiff North Locality)



**Disclosure Control:** Due to a requirement to observe the Registrar General's disclosure control protocols for experimental and official Mid Year Estimates of population it has been necessary to round population figures provided in this profile to the nearest 100 persons. Due to the danger of disclosure by difference the NHSAR population figures in this brief have also been rounded to the nearest 100 persons. For both datasets, when the population estimate was less than 50 persons, the value of 50 has been used. However, it is important to note that all graphics and the percentages presented in this profile have been produced using raw un-rounded estimates. The difference between NHSAR and MYE population estimates are also presented here in their un-rounded raw format.

## Summary Key Statistics

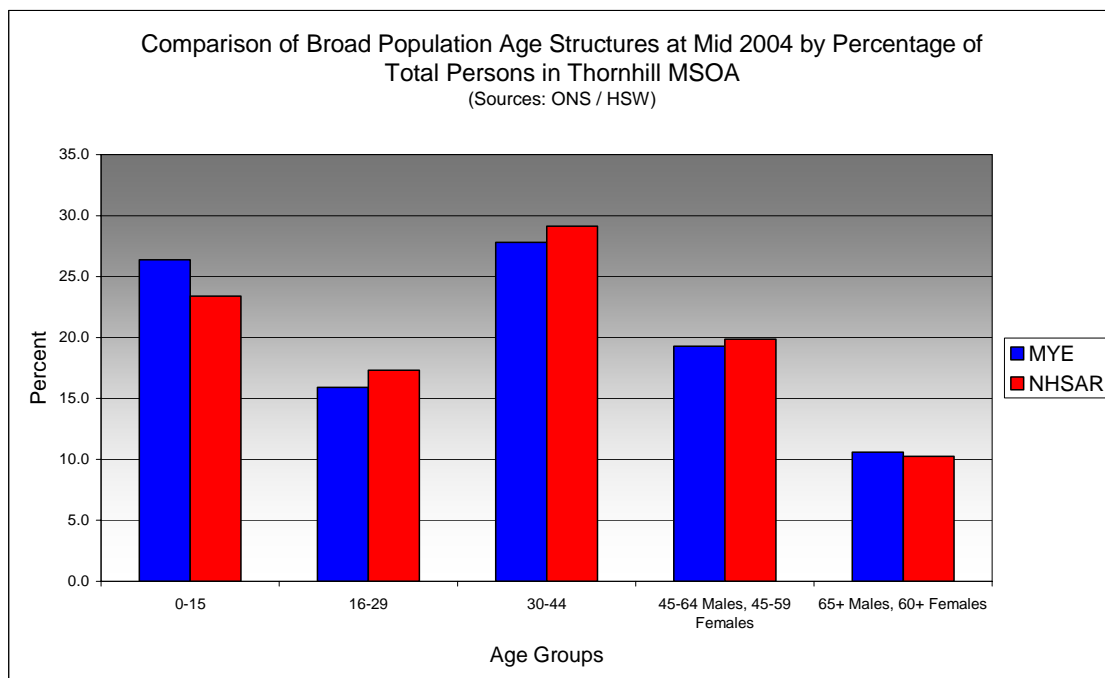
- In Thornhill total NHSAR population at Mid 2004 was 3.8% (approximately 250 persons) **lower** than the experimental Mid Year Estimate. Thornhill is one of only two MSOAs in Cardiff where the NHSAR count is lower than experimental MYEs, the other area is Pontprennau.
- Total male NHSAR population was 6.1% **lower**, while total female population was 1.7% **lower** than the experimental Mid Year Estimate.
- NHSAR population counts showed the greatest variance from the Experimental MYEs in the following age groups: 0 to 4 years 18.5% **lower** and those aged 5 to 9 years 19.8% **lower**.
- Thornhill is ranked 26<sup>th</sup> (MYE) and 30<sup>th</sup> (NHSAR) out of 47 MSOAs in Cardiff for it's total dependency ratio.
- Within the Cardiff North Locality Thornhill is ranked 10<sup>th</sup> (MYE & NHSAR) out of 12 MSOAs for it's total dependency ratio.
- Thornhill is ranked 6<sup>th</sup> (MYE) and 19<sup>th</sup> (NHSAR) out of 47 MSOAs in Cardiff for the total number of younger dependents aged 0 to 14.
- Within it's locality Thornhill is ranked 3<sup>rd</sup> (MYE) and 4<sup>th</sup> (NHSAR) out of 12 MSOAs for the total number of younger dependents aged 0 to 14.
- Thornhill is ranked 40<sup>th</sup> (MYE) and 42<sup>nd</sup> (NHSAR) out of 47 MSOAs for the total number of older dependents aged 65 plus.
- Within it's locality Thornhill is ranked 11<sup>th</sup> (MYE & NHSAR) out of 11 MSOAs for the total number of older dependents aged 65 plus.
- The vast majority of dependent age groups (0 to 14 + 65 and over) are younger dependents aged 0 to 14, representing 73.3% (MYE) and 71.6% (NHSAR) of total dependents.

<b>Dependency Ratios at Mid 2004 in Thornhill MSOA</b> (Sources: Derived from Data Supplied by ONS & HSW)		
	<b>MYE</b>	<b>NHSAR</b>
<b>Dependents Aged 0 - 14</b>	1,600	1,400
<b>Dependents Aged 65 Plus</b>	600	500
<b>Total Dependents</b>	2,200	1,900
<b>Persons Aged 15 to 64</b>	4,300	4,400
<b>Total Persons</b>	6,500	6,300
<b>Thornhill Dependency Ratio</b>	0.51	0.44
<b>Locality Dependency Ratio</b>	0.52	0.48
<b>Cardiff Dependency Ratio</b>	0.47	0.43
<b>Wales Dependency Ratio</b>	0.57	0.52

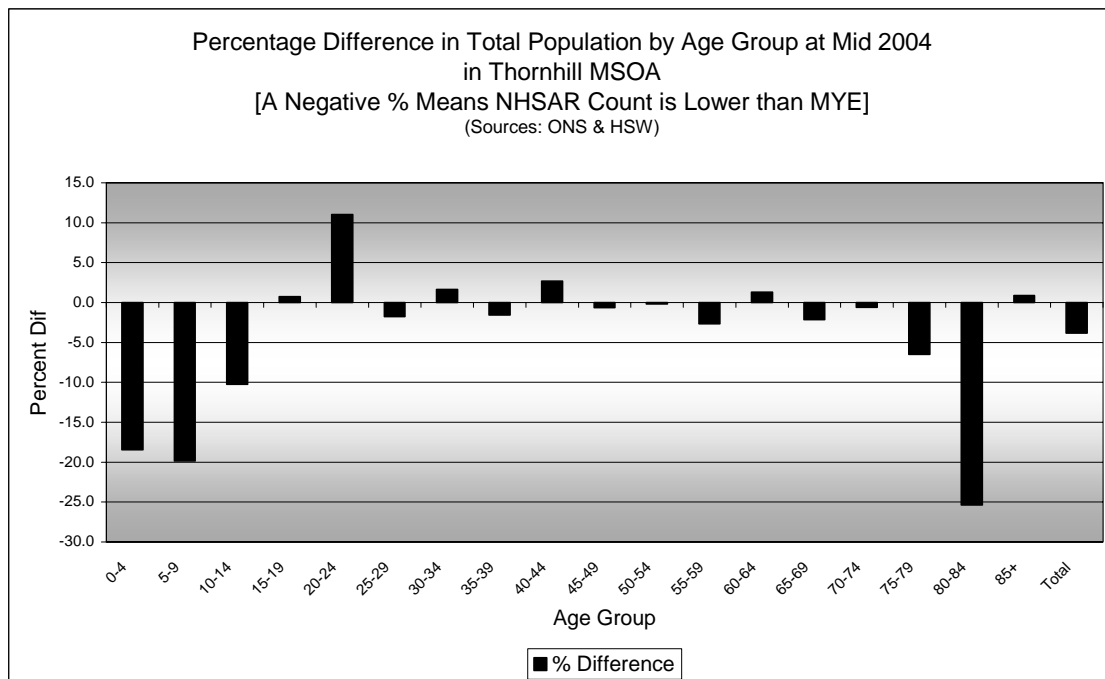
## Broad Age Group Comparisons

Comparison of Population Sources by Broad Age Group for Mid 2004 in Thornhill MSOA						
	0-15	16-29	30-44	45-64 Males, 45-59 Females	65+ Males, 60+ Females	All Ages
<b>MYE</b>	1,700	1,000	1,800	1,300	700	6,500
<b>NHSAR</b>	1,500	1,100	1,800	1,200	600	6,300
<b>Difference #</b>	-253	49	15	-11	-48	-248
<b>Difference %</b>	-14.7	4.7	0.8	-0.9	-7.0	-3.8

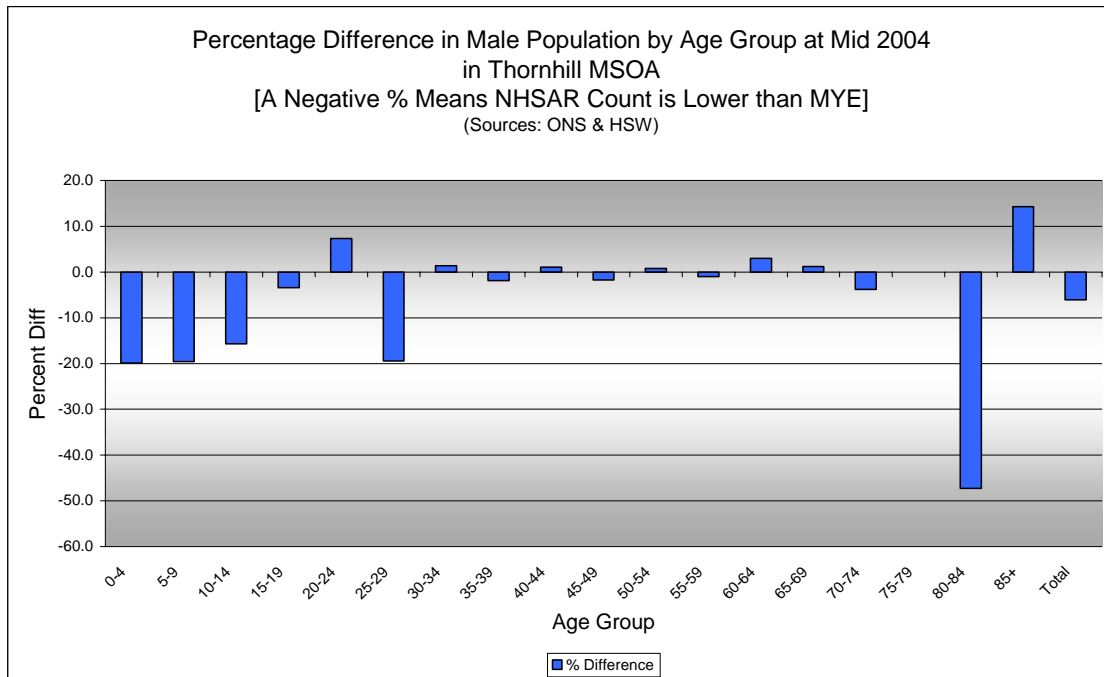
Comparison of Broad Population Age Structures for Mid 2004 by Percentage of Total Population in Thornhill MSOA						
	0-15	16-29	30-44	45-64 Males, 45-59 Females	65+ Males, 60+ Females	All Ages
<b>MYE</b>	26.4	15.9	27.8	19.3	10.6	100.0
<b>NHSAR</b>	23.4	17.3	29.1	19.9	10.3	100.0



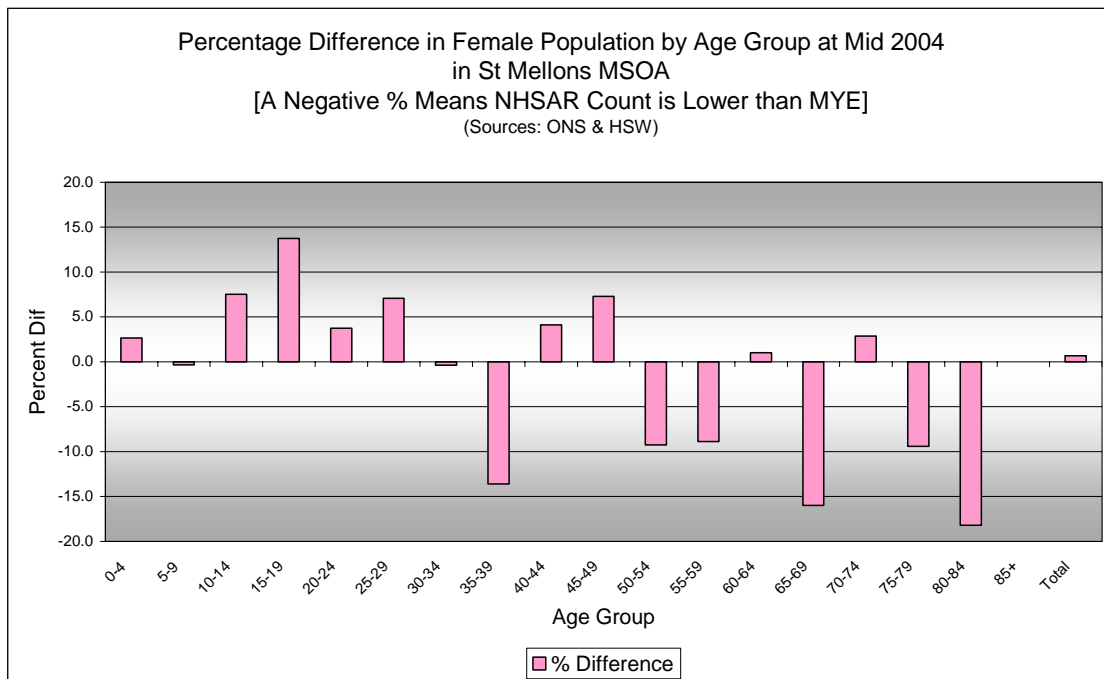
## Quinary Age Group Comparisons – 2004 NHSAR Minus MYE



Comparison of Total Population by Age Group at Mid 2004 in Thornhill MSOA [Difference = NHSAR Minus MYE] (Sources: ONS & HSW)				
Age	Persons (MYE)	Persons (NHSAR)	# Difference	% Difference
0-4	500	400	-93	-18.5
5-9	600	500	-100	-19.8
10-14	600	500	-57	-10.3
15-19	400	400	4	0.7
20-24	300	300	47	11.0
25-29	400	400	-5	-1.7
30-34	600	600	7	1.7
35-39	600	600	-9	-1.6
40-44	600	600	17	2.7
45-49	500	400	-4	-0.7
50-54	400	400	-1	-0.2
55-59	300	300	-10	-2.7
60-64	200	200	4	1.3
65-69	200	200	-4	-2.1
70-74	200	100	-1	-0.6
75-79	100	100	-10	-6.5
80-84	100	100	-34	-25.4
85+	50	50	1	0.9
<b>Total</b>	<b>6,500</b>	<b>6,300</b>	<b>-248</b>	<b>-3.8</b>



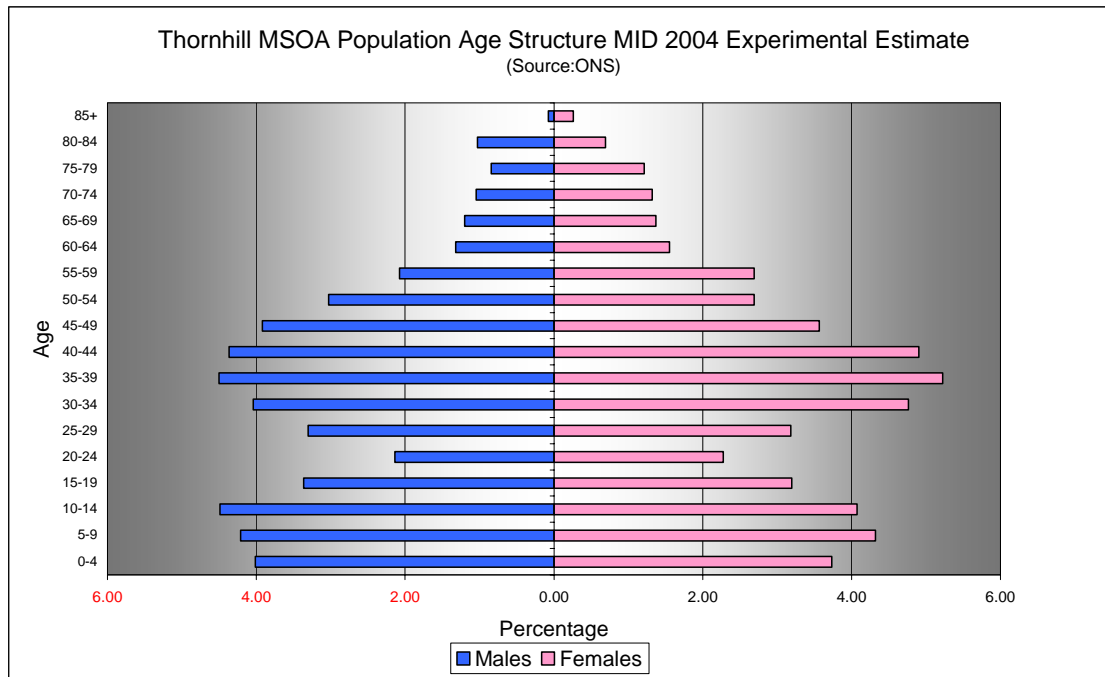
<b>Comparison of Male Population by Age Group at Mid 2004 in Thornhill MSOA</b> [Difference = NHSAR Minus MYE] (Sources: ONS & HSW)				
Age	Males (MYE)	Males (NHSAR)	# Difference	% Difference
0-4	300	200	-52	-19.9
5-9	300	200	-51	-19.5
10-14	300	200	-43	-15.7
15-19	200	200	-10	-3.4
20-24	100	200	16	7.3
25-29	200	200	-27	-19.4
30-34	300	300	3	1.4
35-39	300	300	-5	-1.9
40-44	300	300	3	1.0
45-49	300	300	-5	-1.8
50-54	200	200	2	0.8
55-59	100	100	-2	-1.0
60-64	100	100	4	3.0
65-69	100	100	1	1.2
70-74	100	100	-3	-3.8
75-79	100	100	0	0.0
80-84	100	50	-26	-47.3
85+	50	50	1	14.3
<b>Total</b>	<b>3,200</b>	<b>3,000</b>	<b>-194</b>	<b>-6.1</b>



**Comparison of Female Population by Age Group at Mid 2004 in Thornhill MSOA**  
[Difference = NHSAR Minus MYE] (Sources: ONS & HSW)

Age	Females (MYE)	Females (NHSAR)	# Difference	% Difference
0-4	200	200	-41	-16.9
5-9	300	200	-49	-20.2
10-14	300	300	-14	-5.0
15-19	200	200	14	5.3
20-24	100	200	31	14.9
25-29	200	200	22	14.9
30-34	300	300	4	1.9
35-39	300	300	-4	-1.3
40-44	300	300	14	4.1
45-49	200	200	1	0.3
50-54	200	200	-3	-1.3
55-59	200	200	-8	-4.6
60-64	100	100	0	0.0
65-69	100	100	-5	-5.0
70-74	100	100	2	2.2
75-79	100	100	-10	-11.6
80-84	50	50	-8	-10.1
85+	50	50	-2	-4.4
<b>Total</b>	<b>3,300</b>	<b>3,300</b>	<b>-56</b>	<b>-1.7</b>

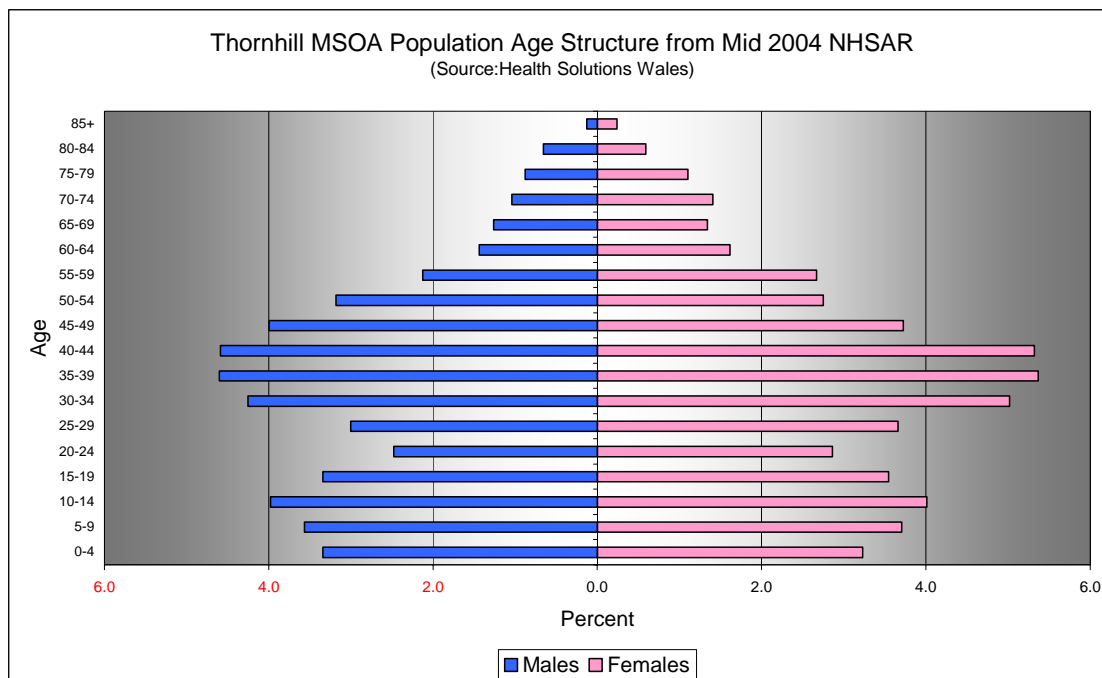
## Quinary Population Age Structure - 2004 MYE



Thornhill MSOA Population Age Structure 2004 MYE (Source: ONS)			
Age	Males	Females	Persons
0-4	300	200	500
5-9	300	300	600
10-14	300	300	600
15-19	200	200	400
20-24	100	100	300
25-29	200	200	400
30-34	300	300	600
35-39	300	300	600
40-44	300	300	600
45-49	300	200	500
50-54	200	200	400
55-59	100	200	300
60-64	100	100	200
65-69	100	100	200
70-74	100	100	200
75-79	100	100	100
80-84	100	50	100
85 +	50	50	50
<b>Total</b>	<b>3,200</b>	<b>3,300</b>	<b>6,500</b>

Thornhill MSOA Population Age Structure 2004 MYE - Percentage of total Persons (Source: ONS)			
Age	Males	Females	Persons
0-4	4.0	3.7	7.7
5-9	4.2	4.3	8.5
10-14	4.5	4.1	8.6
15-19	3.4	3.2	6.6
20-24	2.1	2.3	4.4
25-29	3.3	3.2	6.5
30-34	4.0	4.8	8.8
35-39	4.5	5.2	9.7
40-44	4.4	4.9	9.3
45-49	3.9	3.6	7.5
50-54	3.0	2.7	5.7
55-59	2.1	2.7	4.8
60-64	1.3	1.6	2.9
65-69	1.2	1.4	2.6
70-74	1.0	1.3	2.4
75-79	0.8	1.2	2.1
80-84	1.0	0.7	1.7
85 +	0.1	0.3	0.3
<b>Total</b>	<b>49.0</b>	<b>51.0</b>	<b>100.0</b>

## Quinary Population Age Structure Mid 2004 NHSAR



Thornhill MSOA Population Age Structure - NHSAR Mid 2004 (Source: HSW)			
Age	Males	Females	Persons
0-4	200	200	400
5-9	200	200	500
10-14	200	300	500
15-19	200	200	400
20-24	200	200	300
25-29	200	200	400
30-34	300	300	600
35-39	300	300	600
40-44	300	300	600
45-49	300	200	400
50-54	200	200	400
55-59	100	200	300
60-64	100	100	200
65-69	100	100	200
70-74	100	100	100
75-79	100	100	100
80-84	50	50	100
85+	50	50	50
<b>Total</b>	<b>3,000</b>	<b>3,300</b>	<b>6,300</b>

St Mellons MSOA Population Age Structure % of Total Persons - NHSAR Mid 2004 (Source: HSW)			
Age	Males	Females	Persons
0-4	5.0	4.8	9.9
5-9	4.8	4.7	9.5
10-14	5.0	4.7	9.7
15-19	4.2	4.2	8.4
20-24	4.2	5.2	9.4
25-29	3.7	4.2	8.0
30-34	3.4	4.2	7.6
35-39	3.8	3.7	7.6
40-44	3.2	3.5	6.7
45-49	2.5	3.0	5.5
50-54	2.5	2.3	4.8
55-59	1.6	1.8	3.4
60-64	1.3	1.5	2.8
65-69	0.9	1.0	1.9
70-74	0.7	1.1	1.8
75-79	0.5	0.7	1.3
80-84	0.5	0.8	1.4
85+	0.2	0.3	0.5
<b>Total</b>	<b>48.1</b>	<b>51.9</b>	<b>100.0</b>