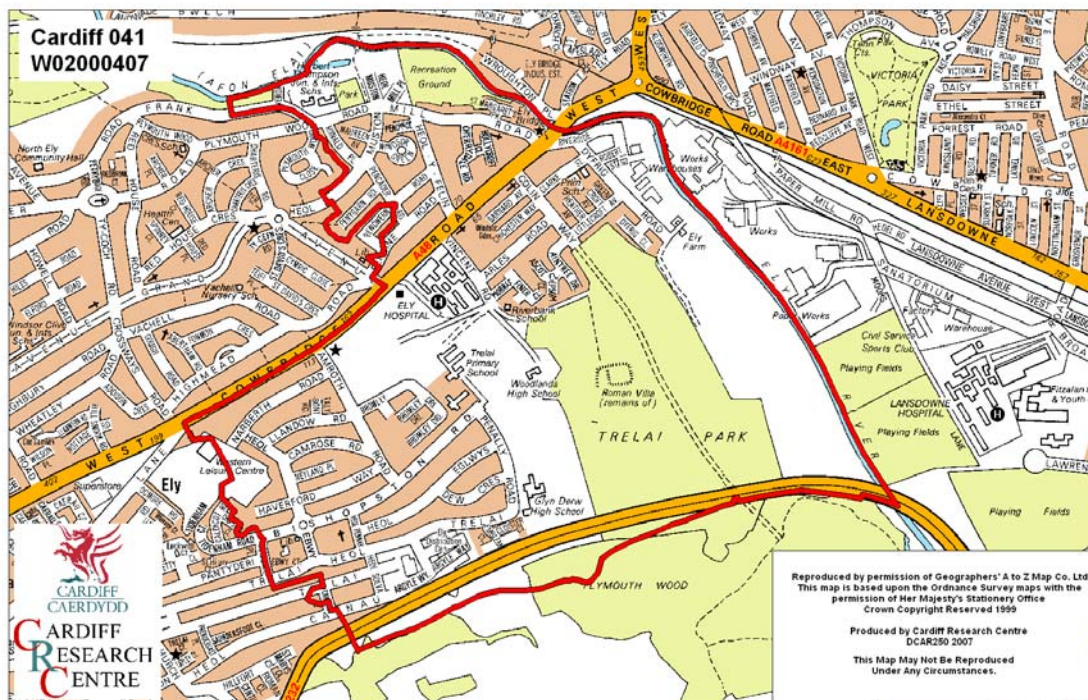


Trelai Middle Super Output Area

A comparison of Population Age Structure's for Mid 2004 from the National Statistics experimental Mid Year Estimate and the National Health Service Administrative Records (NHSAR)

Figure: Trelai MSAO (Cardiff West Locality)



Disclosure Control: Due to a requirement to observe the Registrar General's disclosure control protocols for experimental and official Mid Year Estimates of population it has been necessary to round population figures provided in this profile to the nearest 100 persons. Due to the danger of disclosure by difference the NHSAR population figures in this brief have also been rounded to the nearest 100 persons. For both datasets, when the population estimate was less than 50 persons, the value of 50 has been used. However, it is important to note that all graphics and the percentages presented in this profile have been produced using raw un-rounded estimates. The difference between NHSAR and MYE population estimates are also presented here in their un-rounded raw format.

Summary Key Statistics

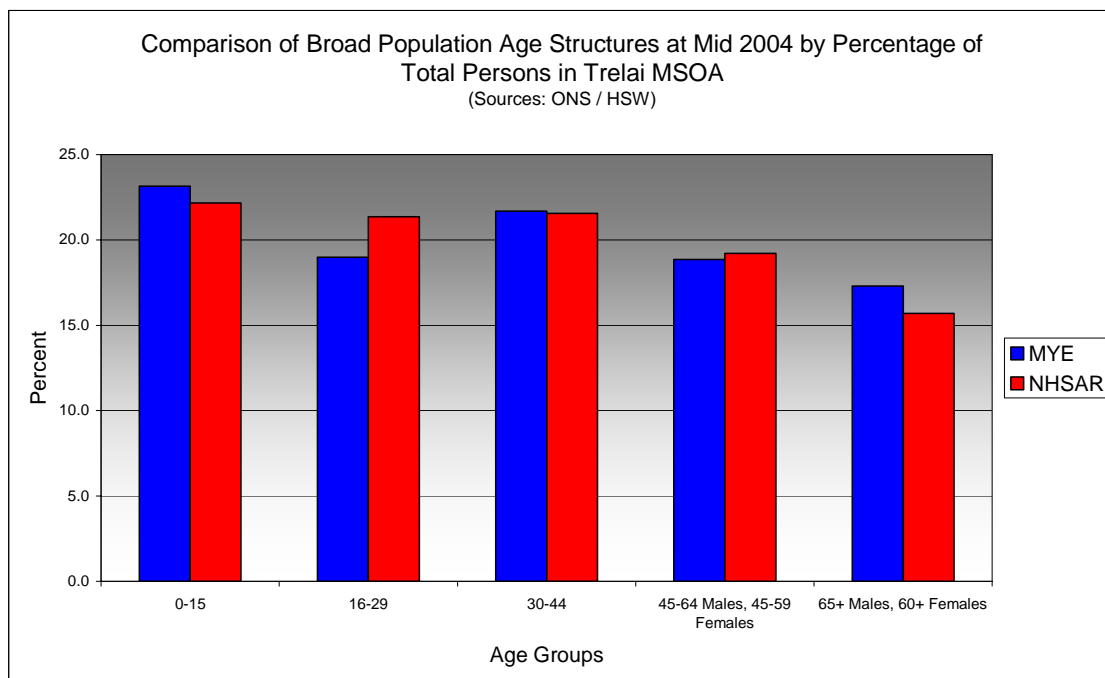
- In Trelai total NHSAR population at Mid 2004 was 9.9% (approximately 600 persons) higher than the experimental Mid Year Estimate.
- Total male NHSAR population was 14.7% higher, while total female population was 5.5% higher than the experimental Mid Year Estimate.
- NHSAR population counts showed the greatest variance from the Experimental MYEs in the following age groups: 20 to 24 years 39.5% higher and those aged 15 to 19 years 30.7% higher.
- Trelai is ranked 13th (MYE) and 16th (NHSAR) out of 47 MSOAs in Cardiff for it's total dependency ratio.
- Within the Cardiff West Locality Trelai is ranked 3rd (MYE) and 4th (NHSAR) out of 13 MSOAs for it's total dependency ratio.
- Trelai is ranked 19th (MYE) and 20th (NHSAR) out of 47 MSOAs in Cardiff for the total number of younger dependents aged 0 to 14.
- Within it's locality Trelai is ranked 6th (MYE & NHSAR) out of 13 MSOAs for the total number of younger dependents aged 0 to 14.
- Trelai is ranked 25th (MYE) and 27th (NHSAR) out of 47 MSOAs for the total number of older dependents aged 65 plus.
- Within it's locality Trelai is ranked 8th (MYE) and 9th (NHSAR) out of 13 MSOAs for the total number of older dependents aged 65 plus.
- The majority of dependent age groups (0 to 14 + 65 and over) are younger dependents aged 0 to 14, representing 59.7% (MYE) and 60.4% (NHSAR) of total dependents.

Dependency Ratios at Mid 2004 in Trelai MSOA (Sources: Derived from Data Supplied by ONS & HSW)		
	MYE	NHSAR
Dependents Aged 0 - 14	1,300	1,400
Dependents Aged 65 Plus	900	900
Total Dependents	2,200	2,300
Persons Aged 15 to 64	3,700	4,200
Total Persons	5,900	6,500
Trelai Dependency Ratio	0.58	0.53
Locality Dependency Ratio	0.52	0.47
Cardiff Dependency Ratio	0.47	0.43
Wales Dependency Ratio	0.57	0.52

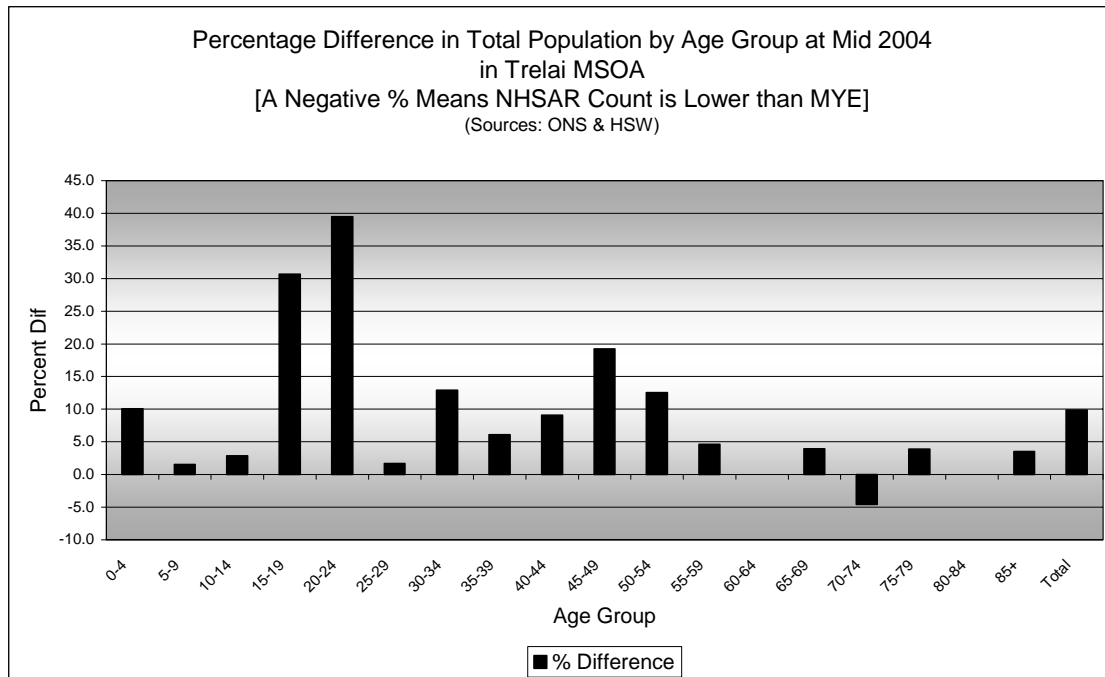
Broad Age Group Comparisons

Comparison of Population Sources by Broad Age Group for Mid 2004 in Trelai MSOA						
	0-15	16-29	30-44	45-64 Males, 45-59 Females	65+ Males, 60+ Females	All Ages
MYE	1,400	1,100	1,300	1,100	1,000	5,900
NHSAR	1,400	1,400	1,400	1,200	1,000	6,500
Difference #	71	265	118	133	-4	583
Difference %	5.2	23.6	9.2	11.9	-0.4	9.9

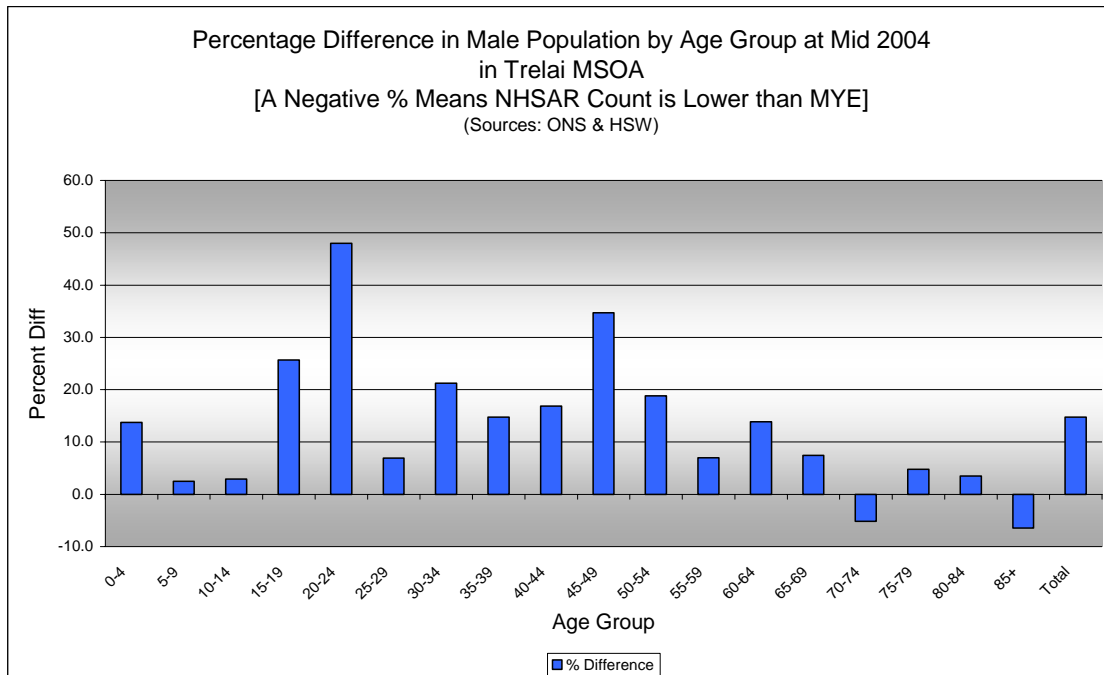
Comparison of Broad Population Age Structures for Mid 2004 by Percentage of Total Population in Trelai MSOA						
	0-15	16-29	30-44	45-64 Males, 45-59 Females	65+ Males, 60+ Females	All Ages
MYE	23.2	19.0	21.7	18.9	17.3	100.0
NHSAR	22.2	21.4	21.6	19.2	15.7	100.0



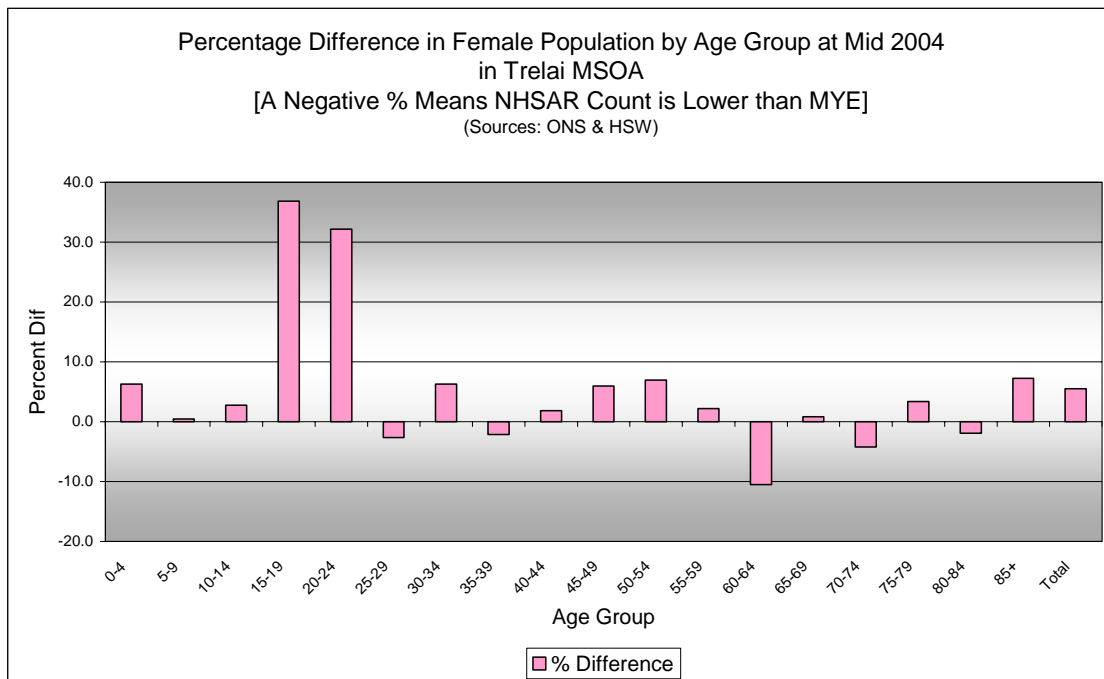
Quinary Age Group Comparisons – 2004 NHSAR Minus MYE



Comparison of Total Population by Age Group at Mid 2004 in Trelai MSOA [Difference = NHSAR Minus MYE] (Sources: ONS & HSW)				
Age	Persons (MYE)	Persons (NHSAR)	# Difference	% Difference
0-4	400	400	39	10.1
5-9	500	500	7	1.5
10-14	500	500	13	2.8
15-19	400	500	124	30.7
20-24	400	500	146	39.5
25-29	400	400	7	1.7
30-34	400	500	52	12.9
35-39	500	500	28	6.1
40-44	400	500	38	9.1
45-49	300	400	60	19.2
50-54	300	400	41	12.5
55-59	400	400	17	4.6
60-64	300	300	0	0.0
65-69	200	200	9	3.9
70-74	200	200	-9	-4.6
75-79	200	200	7	3.9
80-84	200	200	0	0.0
85+	100	100	4	3.5
Total	5,900	6,500	583	9.9

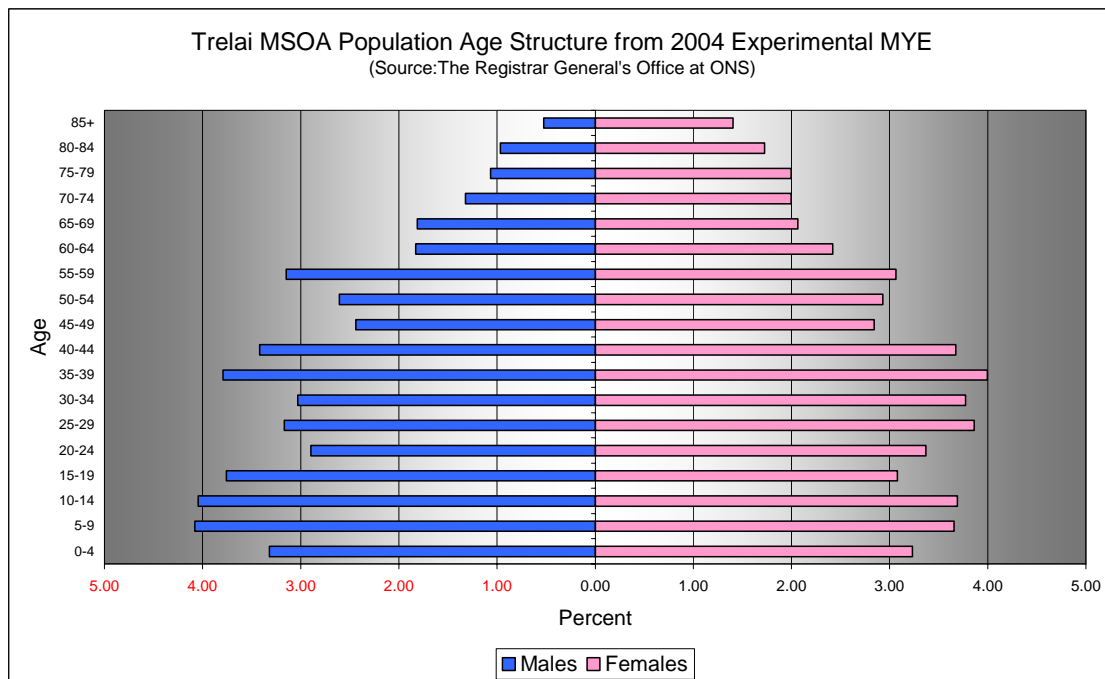


Comparison of Male Population by Age Group at Mid 2004 in Trelai MSOA [Difference = NHSAR Minus MYE] (Sources: ONS & HSW)				
Age	Males (MYE)	Males (NHSAR)	# Difference	% Difference
0-4	200	200	27	13.8
5-9	200	200	6	2.5
10-14	200	200	7	2.9
15-19	200	300	57	25.7
20-24	200	300	82	48.0
25-29	200	200	13	7.0
30-34	200	200	38	21.2
35-39	200	300	33	14.7
40-44	200	200	34	16.8
45-49	100	200	50	34.7
50-54	200	200	29	18.8
55-59	200	200	13	7.0
60-64	100	100	15	13.9
65-69	100	100	8	7.5
70-74	100	100	-4	-5.1
75-79	100	100	3	4.8
80-84	100	100	2	3.5
85+	50	50	-2	-6.5
Total	2,800	3,200	411	14.7



Comparison of Female Population by Age Group at Mid 2004 in Trelai MSOA [Difference = NHSAR Minus MYE] (Sources: ONS & HSW)				
Age	Females (MYE)	Females (NHSAR)	# Difference	% Difference
0-4	200	200	12	6.3
5-9	200	200	1	0.5
10-14	200	200	6	2.8
15-19	200	200	67	36.8
20-24	200	300	64	32.2
25-29	200	200	-6	-2.6
30-34	200	200	14	6.3
35-39	200	200	-5	-2.1
40-44	200	200	4	1.8
45-49	200	200	10	6.0
50-54	200	200	12	6.9
55-59	200	200	4	2.2
60-64	100	100	-15	-10.5
65-69	100	100	1	0.8
70-74	100	100	-5	-4.2
75-79	100	100	4	3.4
80-84	100	100	-2	-2.0
85+	100	100	6	7.2
Total	3,100	3,300	172	5.5

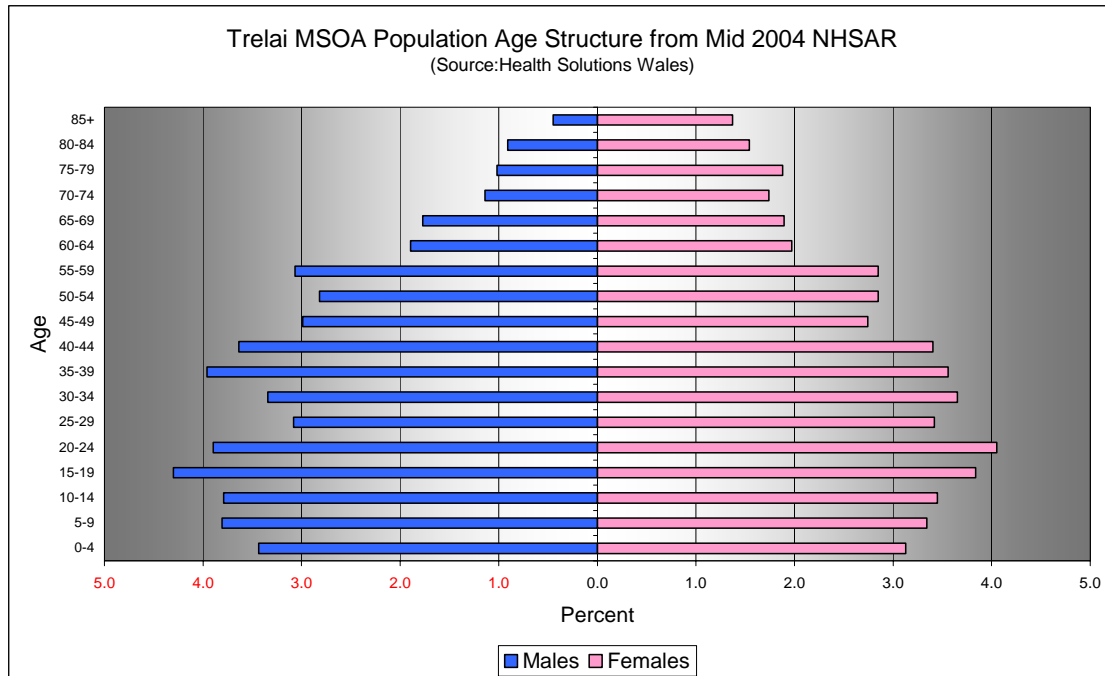
Quinary Population Age Structure - 2004 MYE



Trelai MSOA Population Age Structure 2004 MYE (Source: ONS)			
Age	Males	Females	Persons
0-4	200	200	400
5-9	200	200	500
10-14	200	200	500
15-19	200	200	400
20-24	200	200	400
25-29	200	200	400
30-34	200	200	400
35-39	200	200	500
40-44	200	200	400
45-49	100	200	300
50-54	200	200	300
55-59	200	200	400
60-64	100	100	300
65-69	100	100	200
70-74	100	100	200
75-79	100	100	200
80-84	100	100	200
85+	50	100	100
Total	2,800	3,100	5,900

Trelai MSOA Population Age Structure 2004 MYE - Percentage of total Persons (Source: ONS)			
Age	Males	Females	Persons
0-4	3.3	3.2	6.6
5-9	4.1	3.7	7.7
10-14	4.0	3.7	7.7
15-19	3.8	3.1	6.8
20-24	2.9	3.4	6.3
25-29	3.2	3.9	7.0
30-34	3.0	3.8	6.8
35-39	3.8	4.0	7.8
40-44	3.4	3.7	7.1
45-49	2.4	2.8	5.3
50-54	2.6	2.9	5.5
55-59	3.1	3.1	6.2
60-64	1.8	2.4	4.2
65-69	1.8	2.1	3.9
70-74	1.3	2.0	3.3
75-79	1.1	2.0	3.1
80-84	1.0	1.7	2.7
85+	0.5	1.4	1.9
Total	47.2	52.8	100.0

Quinary Population Age Structure Mid 2004 NHSAR



Trelai MSOA Population Age Structure - NHSAR Mid 2004 (Source: HSW)			
Age	Males	Females	Persons
0-4	200	200	400
5-9	200	200	500
10-14	200	200	500
15-19	300	200	500
20-24	300	300	500
25-29	200	200	400
30-34	200	200	500
35-39	300	200	500
40-44	200	200	500
45-49	200	200	400
50-54	200	200	400
55-59	200	200	400
60-64	100	100	300
65-69	100	100	200
70-74	100	100	200
75-79	100	100	200
80-84	100	100	200
85+	50	100	100
Total	3,200	3,300	6,500

Trelai MSOA Population Age Structure % of Total Persons - NHSAR Mid 2004 (Source: HSW)			
Age	Males	Females	Persons
0-4	3.4	3.1	6.6
5-9	3.8	3.3	7.1
10-14	3.8	3.5	7.2
15-19	4.3	3.8	8.1
20-24	3.9	4.1	8.0
25-29	3.1	3.4	6.5
30-34	3.3	3.7	7.0
35-39	4.0	3.6	7.5
40-44	3.6	3.4	7.0
45-49	3.0	2.7	5.7
50-54	2.8	2.9	5.7
55-59	3.1	2.9	5.9
60-64	1.9	2.0	3.9
65-69	1.8	1.9	3.7
70-74	1.1	1.7	2.9
75-79	1.0	1.9	2.9
80-84	0.9	1.5	2.4
85+	0.4	1.4	1.8
Total	49.3	50.7	100.0