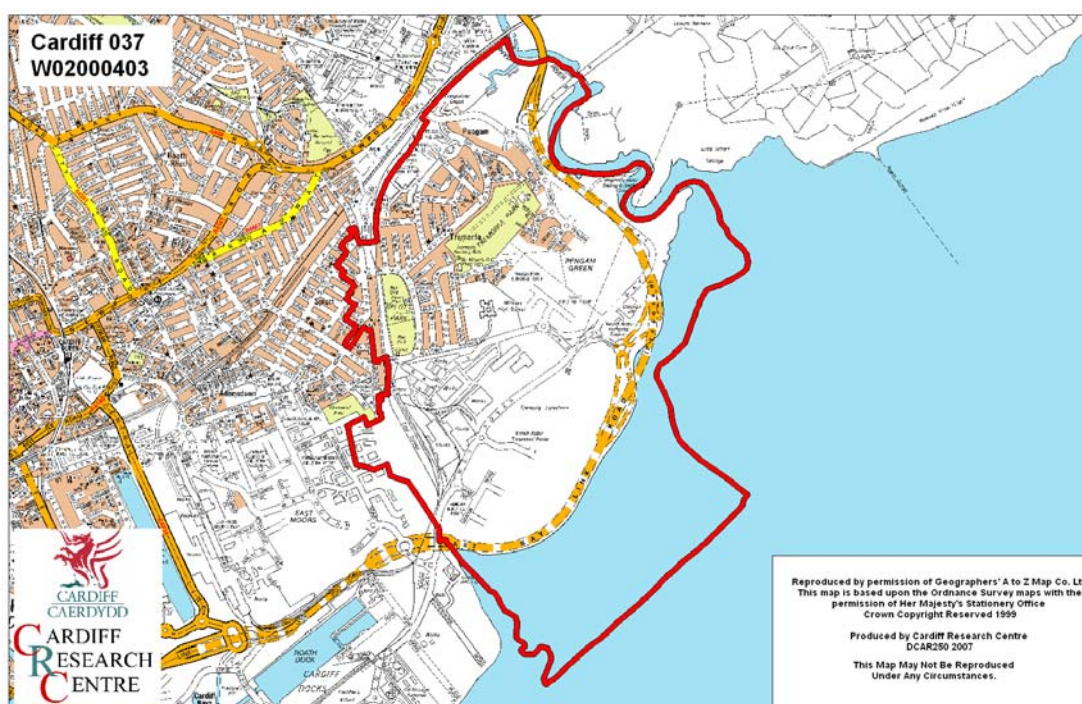


Tremorfa Middle Super Output Area

A comparison of Population Age Structure's for Mid 2004 from the National Statistics experimental Mid Year Estimate and the National Health Service Administrative Records (NHSAR)

Figure: Tremorfa MSOA (Cardiff South East Locality)



Disclosure Control: Due to a requirement to observe the Registrar General's disclosure control protocols for experimental and official Mid Year Estimates of population it has been necessary to round population figures provided in this profile to the nearest 100 persons. Due to the danger of disclosure by difference the NHSAR population figures in this brief have also been rounded to the nearest 100 persons. For both datasets, when the population estimate was less than 50 persons, the value of 50 has been used. However, it is important to note that all graphics and the percentages presented in this profile have been produced using raw un-rounded estimates. The difference between NHSAR and MYE population estimates are also presented here in their un-rounded raw format.

Summary Key Statistics

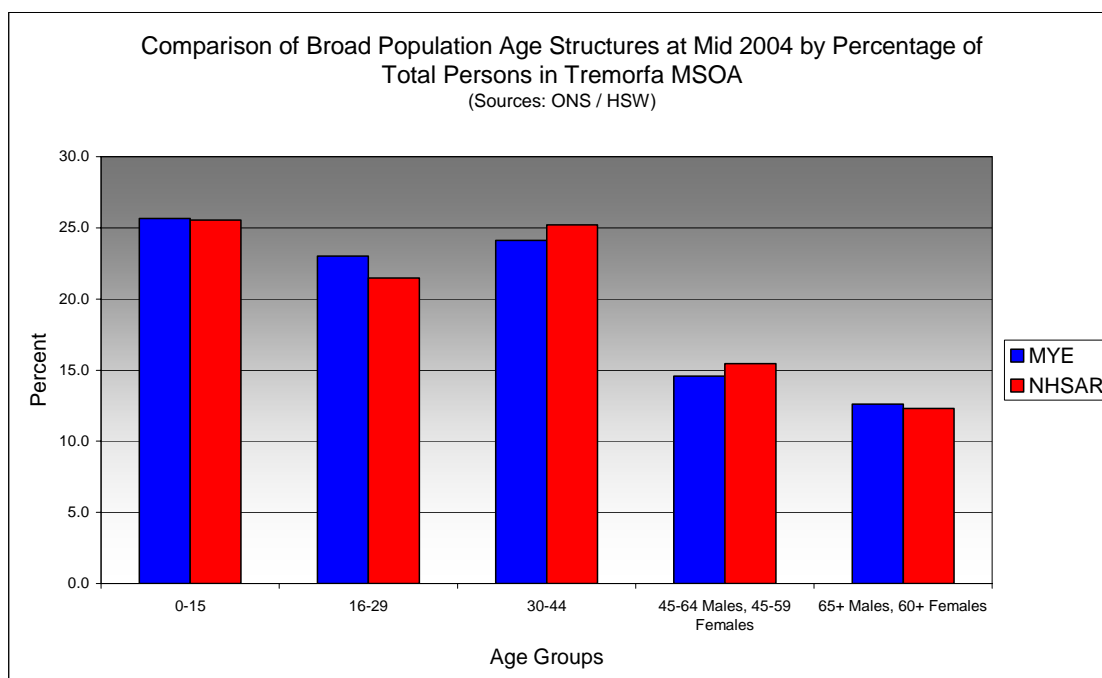
- In Tremorfa total NHSAR population at Mid 2004 was 3.8% (approximately 250 persons) higher than the experimental Mid Year Estimate.
- Total male NHSAR population was 7.4% higher, while total female population was 0.4% higher than the experimental Mid Year Estimate.
- NHSAR population counts showed the greatest variance from the Experimental MYEs in the following age groups: 45 to 49 years 15.5% higher and those aged 40 to 45 years 13.9% higher.
- Tremorfa is ranked 19th (MYE) and 15th (NHSAR) out of 47 MSOAs in Cardiff for it's total dependency ratio.
- Within the Cardiff South East Locality Tremorfa is ranked 6th (MYE & NHSAR) out of 11 MSOAs for it's total dependency ratio.
- Tremorfa is ranked 7th (MYE) and 5th (NHSAR) out of 47 MSOAs in Cardiff for the total number of younger dependents aged 0 to 14.
- Within it's locality Tremorfa is ranked 4th (MYE & NHSAR) out of 13 MSOAs for the total number of younger dependents aged 0 to 14.
- Tremorfa is ranked 37th (MYE) and 38th (NHSAR) out of 47 MSOAs for the total number of older dependents aged 65 plus.
- Within it's locality Tremorfa is ranked 9th (MYE & NHSAR) out of 11 MSOAs for the total number of older dependents aged 65 plus.
- The vast majority of dependent age groups (0 to 14 + 65 and over) are younger dependents aged 0 to 14, representing 68.5% (MYE) and 69.0% (NHSAR) of total dependents.

Dependency Ratios at Mid 2004 in Tremorfa MSOA (Sources: Derived from Data Supplied by ONS & HSW)		
	MYE	NHSAR
Dependents Aged 0 - 14	1,600	1,600
Dependents Aged 65 Plus	700	700
Total Dependents	2,300	2,400
Persons Aged 15 to 64	4,300	4,500
Total Persons	6,600	6,800
Tremorfa Dependency Ratio	0.55	0.53
Locality Dependency Ratio	0.52	0.51
Cardiff Dependency Ratio	0.47	0.43
Wales Dependency Ratio	0.57	0.52

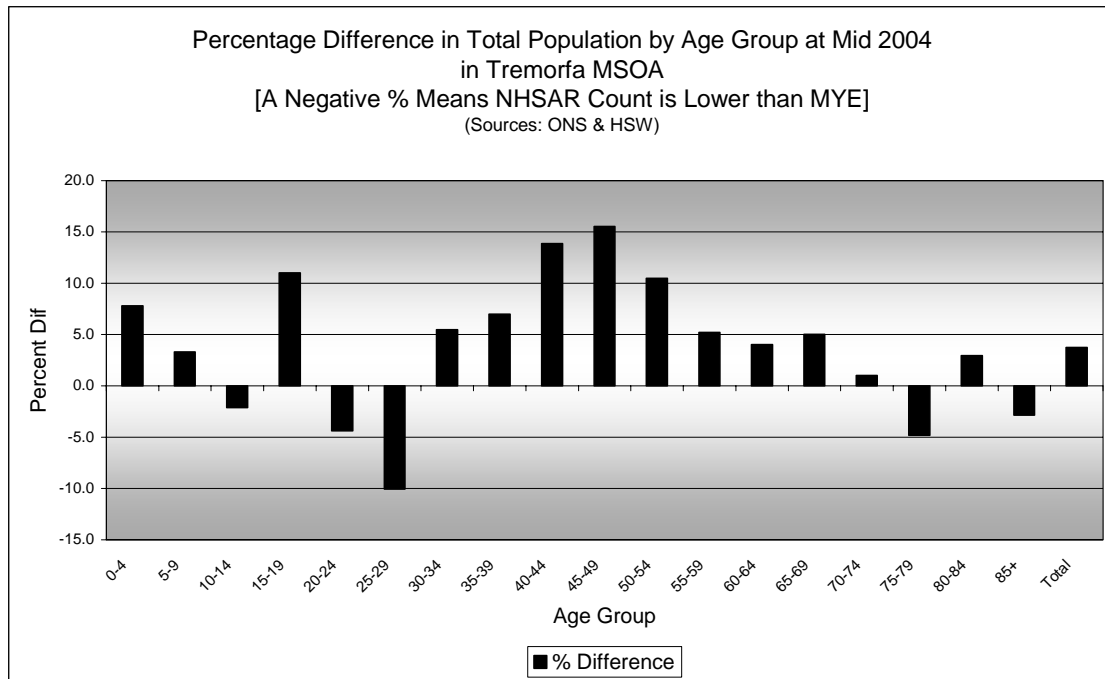
Broad Age Group Comparisons

Comparison of Population Sources by Broad Age Group for Mid 2004 in Tremorfa MSOA						
	0-15	16-29	30-44	45-64 Males, 45-59 Females	65+ Males, 60+ Females	All Ages
MYE	1,700	1,500	1,600	1,000	800	6,600
NHSAR	1,800	1,500	1,700	1100	800	6,800
Difference #	57	-50	134	96	11	248
Difference %	3.4	-3.3	8.4	10.0	1.3	3.8

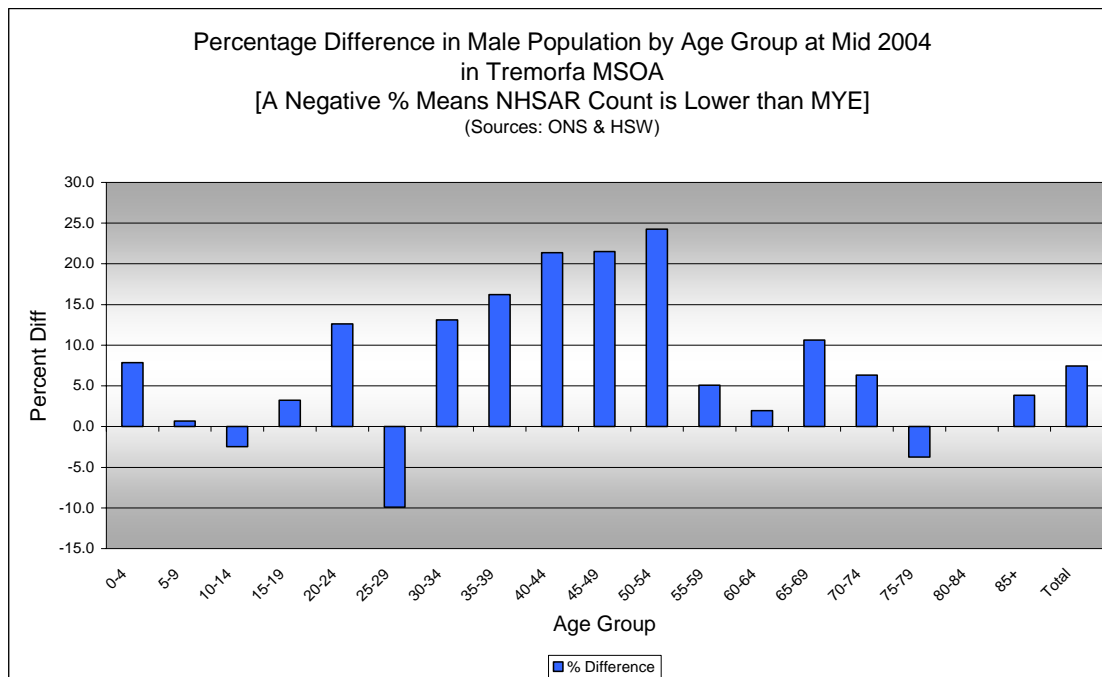
Comparison of Broad Population Age Structures for Mid 2004 by Percentage of Total Population in Tremorfa MSOA						
	0-15	16-29	30-44	45-64 Males, 45-59 Females	65+ Males, 60+ Females	All Ages
MYE	25.7	23.0	24.1	14.6	12.6	100.0
NHSAR	25.6	21.5	25.2	15.5	12.3	100.0



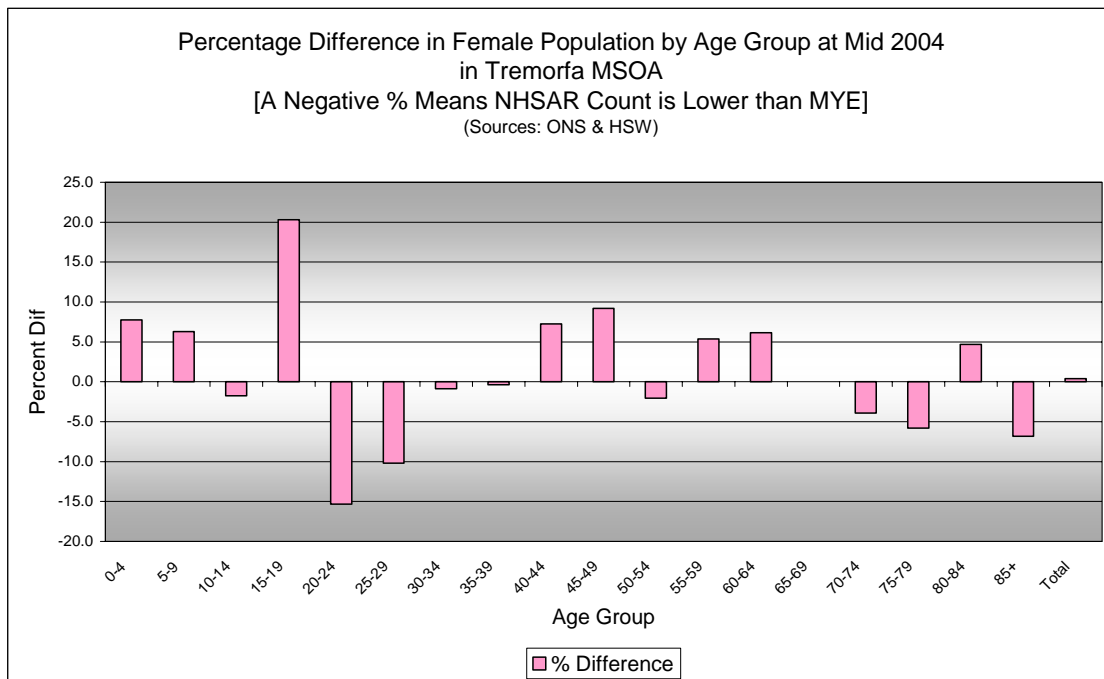
Quinary Age Group Comparisons – 2004 NHSAR Minus MYE



Comparison of Total Population by Age Group at Mid 2004 in Tremorfa MSOA [Difference = NHSAR Minus MYE] (Sources: ONS & HSW)				
Age	Persons (MYE)	Persons (NHSAR)	# Difference	% Difference
0-4	500	500	38	7.8
5-9	500	600	18	3.3
10-14	600	600	-12	-2.1
15-19	500	500	50	11.0
20-24	500	500	-23	-4.4
25-29	600	600	-64	-10.1
30-34	600	700	34	5.5
35-39	500	500	35	7.0
40-44	500	500	65	13.9
45-49	300	400	52	15.5
50-54	300	300	29	10.5
55-59	300	300	13	5.2
60-64	200	200	8	4.0
65-69	200	200	10	5.0
70-74	200	200	2	1.0
75-79	200	200	-8	-4.8
80-84	100	100	3	2.9
85+	100	100	-2	-2.9
Total	6,600	6,800	248	3.8

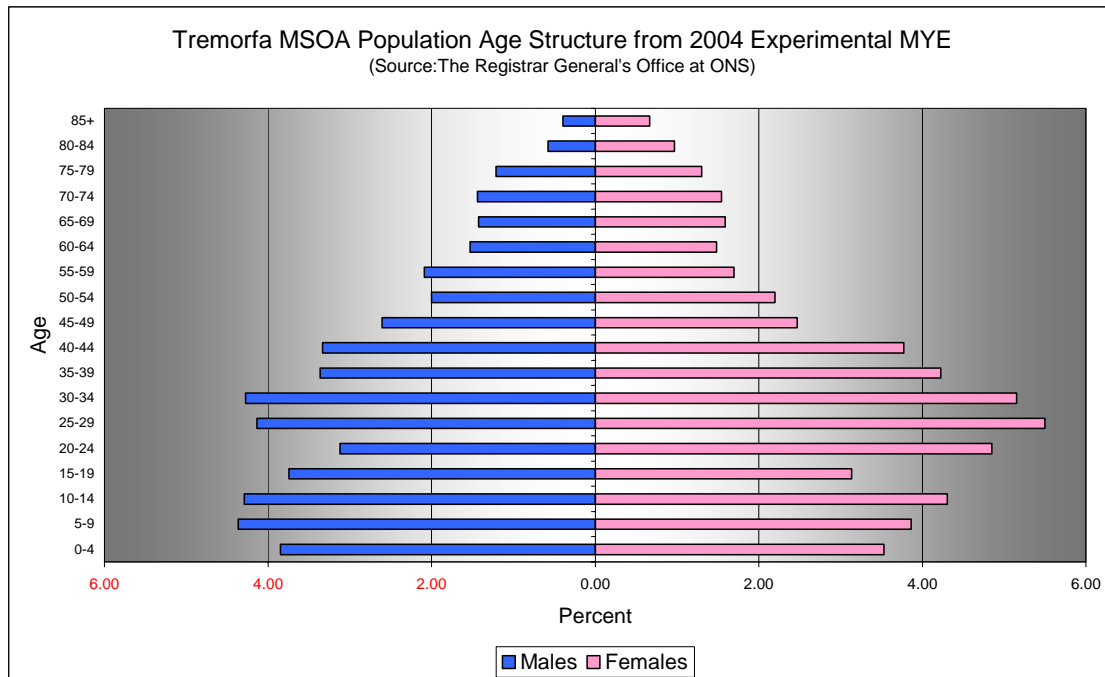


Comparison of Male Population by Age Group at Mid 2004 in Tremorfa MSOA [Difference = NHSAR Minus MYE] (Sources: ONS & HSW)				
Age	Males (MYE)	Males (NHSAR)	# Difference	% Difference
0-4	300	300	20	7.9
5-9	300	300	2	0.7
10-14	300	300	-7	-2.5
15-19	200	300	8	3.2
20-24	200	200	26	12.6
25-29	300	200	-27	-9.9
30-34	300	300	37	13.1
35-39	200	300	36	16.2
40-44	200	300	47	21.4
45-49	200	200	37	21.5
50-54	100	200	32	24.2
55-59	100	100	7	5.1
60-64	100	100	2	2.0
65-69	100	100	10	10.6
70-74	100	100	6	6.3
75-79	100	100	-3	-3.8
80-84	50	50	0	0.0
85+	50	50	1	3.8
Total	3,200	3,400	234	7.4



Comparison of Female Population by Age Group at Mid 2004 in Tremorfa MSOA [Difference = NHSAR Minus MYE] (Sources: ONS & HSW)				
Age	Females (MYE)	Females (NHSAR)	# Difference	% Difference
0-4	200	300	18	7.7
5-9	300	300	16	6.3
10-14	300	300	-5	-1.8
15-19	200	200	42	20.3
20-24	300	300	-49	-15.3
25-29	400	300	-37	-10.2
30-34	300	300	-3	-0.9
35-39	300	300	-1	-0.4
40-44	200	300	18	7.2
45-49	200	200	15	9.2
50-54	100	100	-3	-2.1
55-59	100	100	6	5.4
60-64	100	100	6	6.1
65-69	100	100	0	0.0
70-74	100	100	-4	-3.9
75-79	100	100	-5	-5.8
80-84	100	100	3	4.7
85+	50	50	-3	-6.8
Total	3,400	3,500	14	0.4

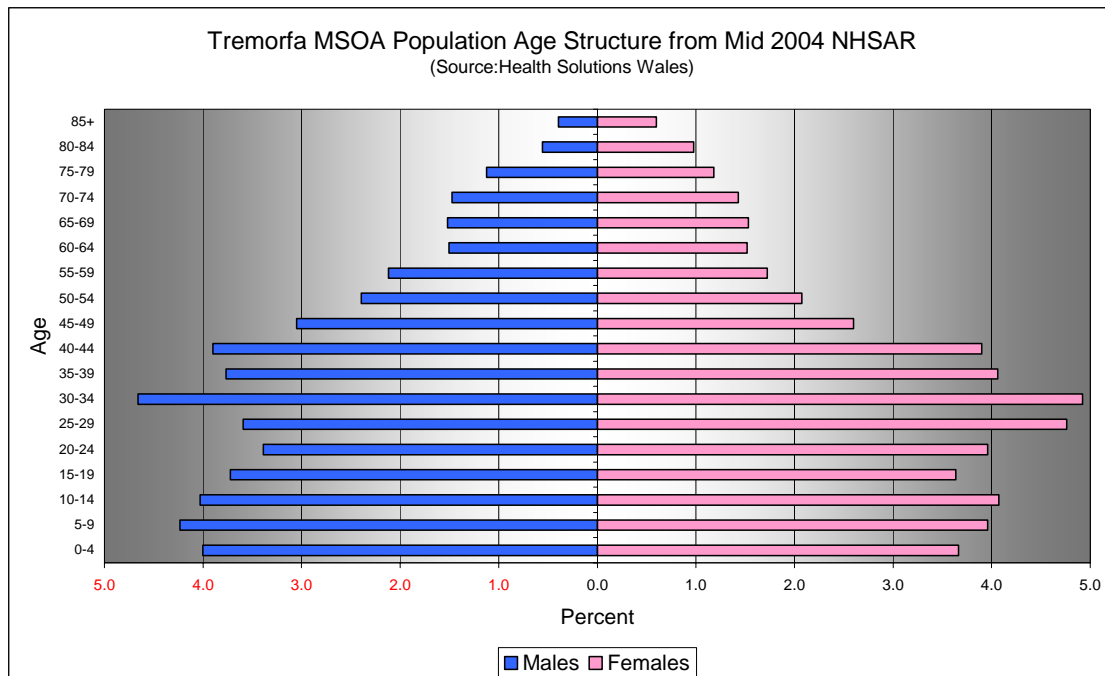
Quinary Population Age Structure - 2004 MYE



Tremorfa MSOA Population Age Structure 2004 MYE (Source: ONS)			
Age	Males	Females	Persons
0-4	300	200	500
5-9	300	300	500
10-14	300	300	600
15-19	200	200	500
20-24	200	300	500
25-29	300	400	600
30-34	300	300	600
35-39	200	300	500
40-44	200	200	500
45-49	200	200	300
50-54	100	100	300
55-59	100	100	300
60-64	100	100	200
65-69	100	100	200
70-74	100	100	200
75-79	100	100	200
80-84	50	100	100
85+	50	50	100
Total	3,200	3,400	6,600

Tremorfa MSOA Population Age Structure 2004 MYE - Percentage of total Persons (Source: ONS)			
Age	Males	Females	Persons
0-4	3.8	3.5	7.4
5-9	4.4	3.9	8.2
10-14	4.3	4.3	8.6
15-19	3.7	3.1	6.9
20-24	3.1	4.8	8.0
25-29	4.1	5.5	9.6
30-34	4.3	5.2	9.4
35-39	3.4	4.2	7.6
40-44	3.3	3.8	7.1
45-49	2.6	2.5	5.1
50-54	2.0	2.2	4.2
55-59	2.1	1.7	3.8
60-64	1.5	1.5	3.0
65-69	1.4	1.6	3.0
70-74	1.4	1.5	3.0
75-79	1.2	1.3	2.5
80-84	0.6	1.0	1.5
85+	0.4	0.7	1.1
Total	47.7	52.3	100.0

Quinary Population Age Structure Mid 2004 NHSAR



Tremorfa MSOA Population Age Structure - NHSAR Mid 2004 (Source: HSW)			
Age	Males	Females	Persons
0-4	300	300	500
5-9	300	300	600
10-14	300	300	600
15-19	300	200	500
20-24	200	300	500
25-29	200	300	600
30-34	300	300	700
35-39	300	300	500
40-44	300	300	500
45-49	200	200	400
50-54	200	100	300
55-59	100	100	300
60-64	100	100	200
65-69	100	100	200
70-74	100	100	200
75-79	100	100	200
80-84	50	100	100
85+	50	50	100
Total	3,400	3,500	6,800

Tremorfa MSOA Population Age Structure % of Total Persons - NHSAR Mid 2004 (Source: HSW)			
Age	Males	Females	Persons
0-4	4.0	3.7	7.7
5-9	4.2	4.0	8.2
10-14	4.0	4.1	8.1
15-19	3.7	3.6	7.4
20-24	3.4	4.0	7.3
25-29	3.6	4.8	8.4
30-34	4.7	4.9	9.6
35-39	3.8	4.1	7.8
40-44	3.9	3.9	7.8
45-49	3.1	2.6	5.7
50-54	2.4	2.1	4.5
55-59	2.1	1.7	3.8
60-64	1.5	1.5	3.0
65-69	1.5	1.5	3.1
70-74	1.5	1.4	2.9
75-79	1.1	1.2	2.3
80-84	0.6	1.0	1.5
85+	0.4	0.6	1.0
Total	49.4	50.6	100.0