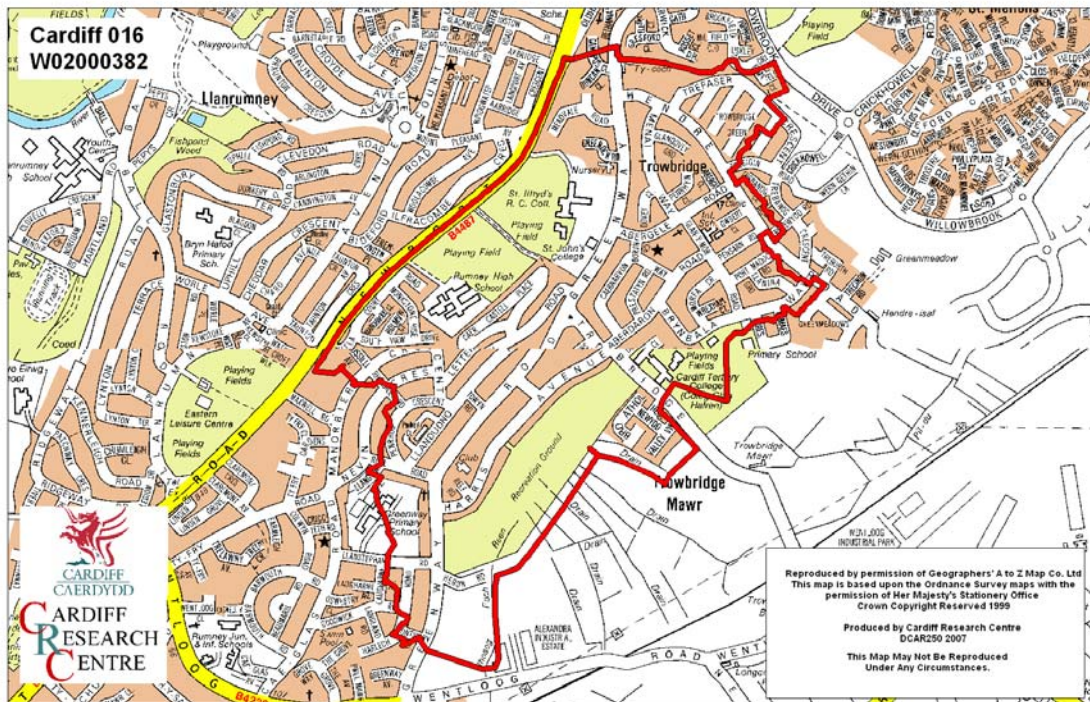


# Trowbridge Middle Super Output Area

A comparison of Population Age Structure's for Mid 2004 from the National Statistics experimental Mid Year Estimate and the National Health Service Administrative Records (NHSAR)

Figure: Trowbridge MSAO (Cardiff South East Locality)



**Disclosure Control:** Due to a requirement to observe the Registrar General's disclosure control protocols for experimental and official Mid Year Estimates of population it has been necessary to round population figures provided in this profile to the nearest 100 persons. Due to the danger of disclosure by difference the NHSAR population figures in this brief have also been rounded to the nearest 100 persons. For both datasets, when the population estimate was less than 50 persons, the value of 50 has been used. However, it is important to note that all graphics and the percentages presented in this profile have been produced using raw un-rounded estimates. The difference between NHSAR and MYE population estimates are also presented here in their un-rounded raw format.

## Summary Key Statistics

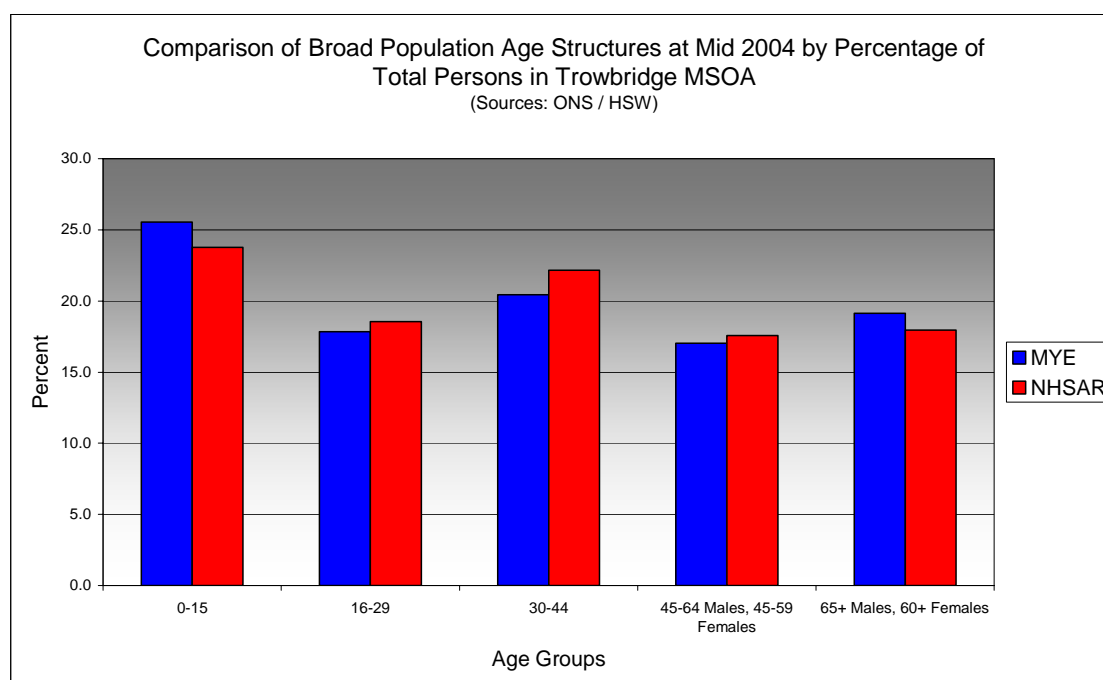
- In Trowbridge total NHSAR population at Mid 2004 was 6.3% (approximately 400 persons) higher than the experimental Mid Year Estimate.
- Total male NHSAR population was 12.1% higher, while total female population was 1.3% higher than the experimental Mid Year Estimate.
- NHSAR population counts showed the greatest variance from the Experimental MYEs in the following age groups: 25 to 29 years 23.0% higher and those aged 30 to 34 years 16.1% higher.
- Trowbridge is ranked 2<sup>nd</sup> (MYE) and 5<sup>th</sup> (NHSAR) out of 47 MSOAs in Cardiff for it's total dependency ratio.
- Within the Cardiff South East Locality Trowbridge is ranked 1<sup>st</sup> (MYE) and 2<sup>nd</sup> (NHSAR) out of 11 MSOAs for it's total dependency ratio.
- Trowbridge is ranked 12<sup>th</sup> (MYE) and 18<sup>th</sup> (NHSAR) out of 47 MSOAs in Cardiff for the total number of younger dependents aged 0 to 14.
- Within it's locality Trowbridge is ranked 5<sup>th</sup> (MYE) and 7<sup>th</sup> (NHSAR) out of 11 MSOAs for the total number of younger dependents aged 0 to 14.
- Trowbridge is ranked 22<sup>nd</sup> (MYE) and 24<sup>th</sup> (NHSAR) out of 47 MSOAs for the total number of older dependents aged 65 plus.
- Within it's locality Trowbridge is ranked 4<sup>th</sup> (MYE) and 5<sup>th</sup> (NHSAR) out of 11 MSOAs for the total number of older dependents aged 65 plus.
- The majority of dependent age groups (0 to 14 + 65 and over) are younger dependents aged 0 to 14, representing 59.7% (MYE) and 59.3% (NHSAR) of total dependents.

<b>Dependency Ratios at Mid 2004 in Trowbridge MSOA</b> (Sources: Derived from Data Supplied by ONS & HSW)		
	<b>MYE</b>	<b>NHSAR</b>
<b>Dependents Aged 0 - 14</b>	1,400	1,400
<b>Dependents Aged 65 Plus</b>	900	900
<b>Total Dependents</b>	2,300	2,300
<b>Persons Aged 15 to 64</b>	3,500	3,900
<b>Total Persons</b>	5,800	6,200
<b>Trowbridge Dependency Ratio</b>	0.67	0.60
<b>Locality Dependency Ratio</b>	0.52	0.51
<b>Cardiff Dependency Ratio</b>	0.47	0.43
<b>Wales Dependency Ratio</b>	0.57	0.52

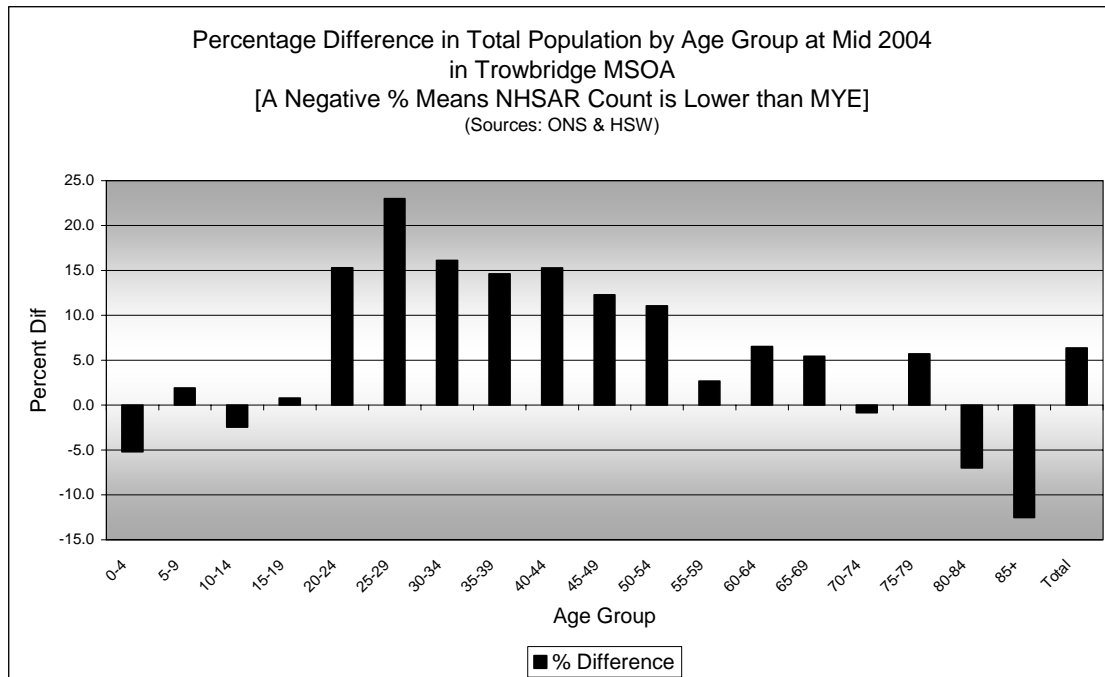
## Broad Age Group Comparisons

Comparison of Population Sources by Broad Age Group for Mid 2004 in Trowbridge MSOA						
	0-15	16-29	30-44	45-64 Males, 45-59 Females	65+ Males, 60+ Females	All Ages
<b>MYE</b>	1,500	1,000	1,100	1,000	1,100	5,800
<b>NHSAR</b>	1,500	1,100	1,400	1,100	1,100	6,200
<b>Difference #</b>	-16	110	181	96	-3	368
<b>Difference %</b>	-1.1	10.6	15.3	9.7	-0.3	6.3

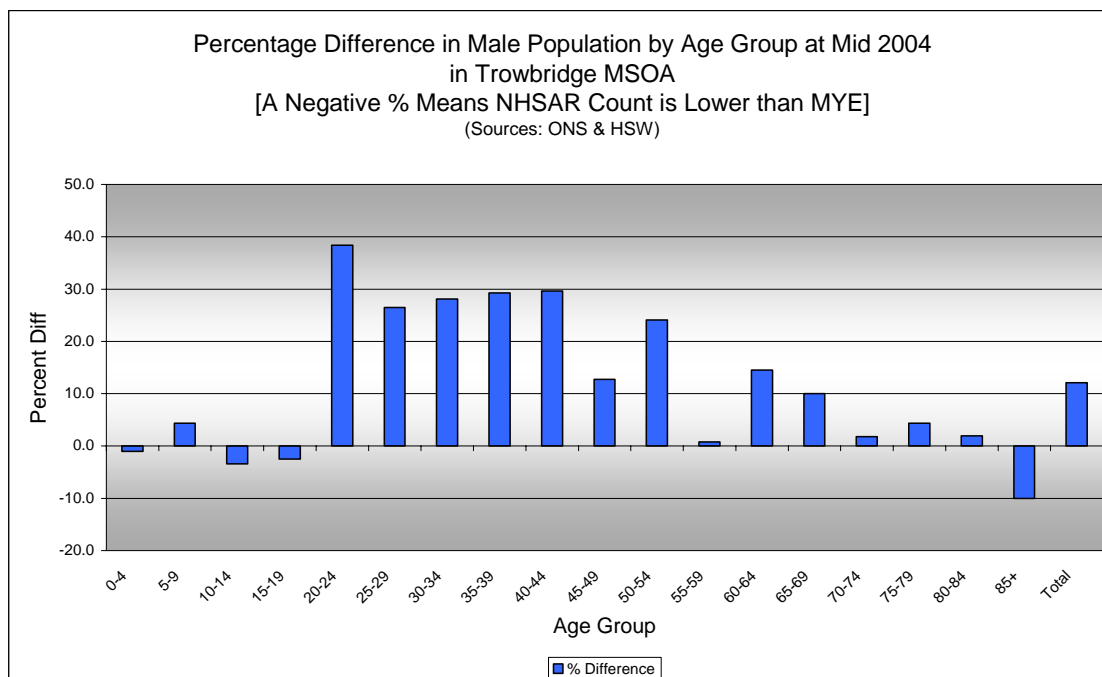
Comparison of Broad Population Age Structures for Mid 2004 by Percentage of Total Population in Trowbridge MSOA						
	0-15	16-29	30-44	45-64 Males, 45-59 Females	65+ Males, 60+ Females	All Ages
<b>MYE</b>	25.6	17.8	20.4	17.0	19.1	100.0
<b>NHSAR</b>	23.8	18.6	22.2	17.6	17.9	100.0



## Quinary Age Group Comparisons – 2004 NHSAR Minus MYE

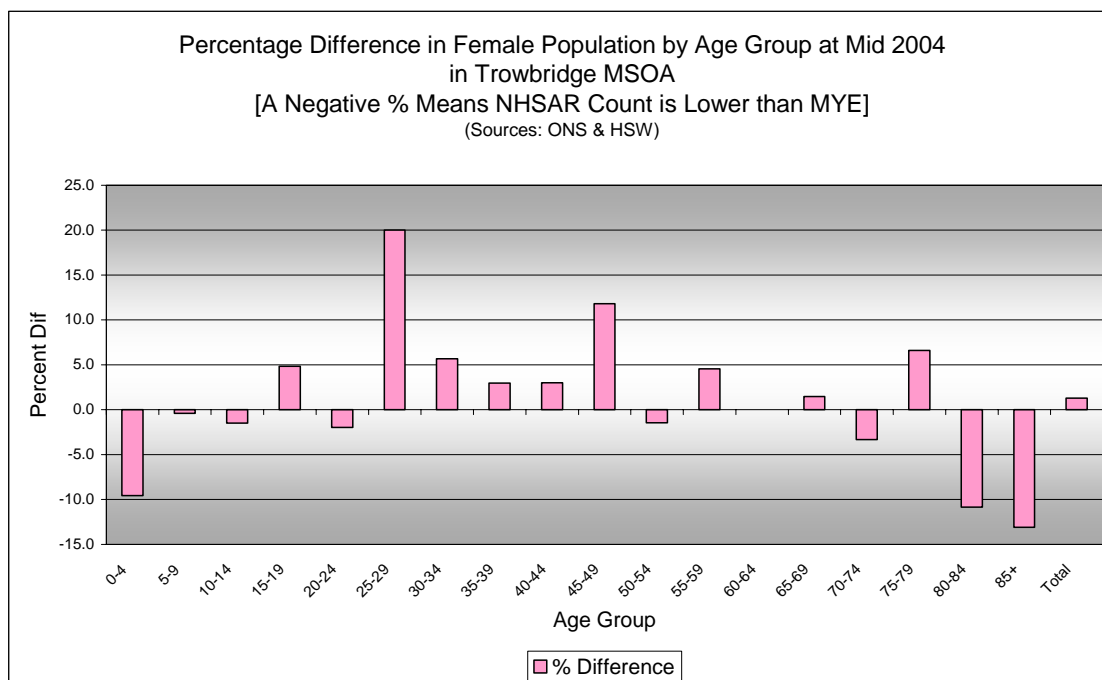


Comparison of Total Population by Age Group at Mid 2004 in Trowbridge MSOA [Difference = NHSAR Minus MYE] (Sources: ONS & HSW)				
Age	Persons (MYE)	Persons (NHSAR)	# Difference	% Difference
0-4	400	400	-20	-5.2
5-9	500	500	9	1.9
10-14	500	500	-13	-2.4
15-19	500	500	4	0.8
20-24	400	400	54	15.3
25-29	300	300	60	23.0
30-34	300	400	53	16.1
35-39	400	500	62	14.6
40-44	400	500	66	15.3
45-49	300	400	39	12.3
50-54	300	300	30	11.1
55-59	300	300	7	2.7
60-64	300	300	20	6.5
65-69	300	300	14	5.4
70-74	200	200	-2	-0.9
75-79	200	200	10	5.7
80-84	200	200	-12	-7.0
85+	100	100	-13	-12.5
<b>Total</b>	<b>5,800</b>	<b>6,200</b>	<b>368</b>	<b>6.3</b>



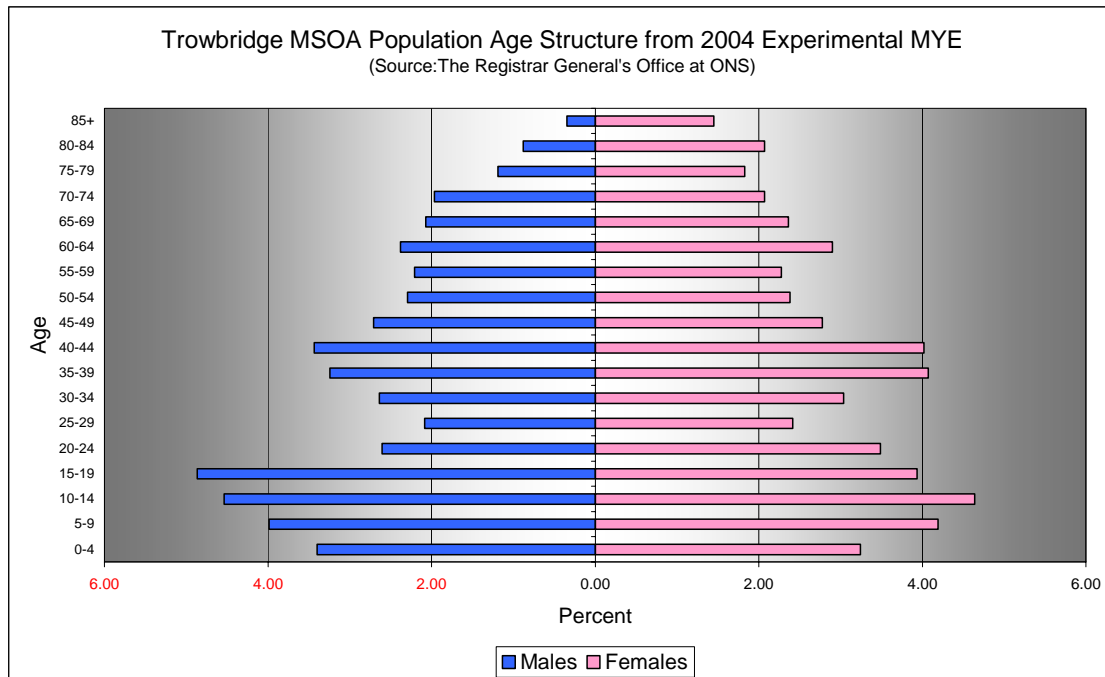
**Comparison of Male Population by Age Group at Mid 2004 in Trowbridge MSOA**  
[Difference = NHSAR Minus MYE] (Sources: ONS & HSW)

Age	Males (MYE)	Males (NHSAR)	# Difference	% Difference
0-4	200	200	-2	-1.0
5-9	200	200	10	4.3
10-14	300	300	-9	-3.4
15-19	300	300	-7	-2.5
20-24	200	200	58	38.4
25-29	100	200	32	26.4
30-34	200	200	43	28.1
35-39	200	200	55	29.3
40-44	200	300	59	29.6
45-49	200	200	20	12.7
50-54	100	200	32	24.1
55-59	100	100	1	0.8
60-64	100	200	20	14.5
65-69	100	100	12	10.0
70-74	100	100	2	1.8
75-79	100	100	3	4.3
80-84	100	100	1	2.0
85+	50	50	-2	-10.0
<b>Total</b>	<b>2,700</b>	<b>3,000</b>	<b>328</b>	<b>12.1</b>



<b>Comparison of Female Population by Age Group at Mid 2004 in Trowbridge MSOA</b> [Difference = NHSAR Minus MYE] (Sources: ONS & HSW)				
Age	Females (MYE)	Females (NHSAR)	# Difference	% Difference
0-4	200	200	-18	-9.6
5-9	200	200	-1	-0.4
10-14	300	300	-4	-1.5
15-19	200	200	11	4.8
20-24	200	200	-4	-2.0
25-29	100	200	28	20.0
30-34	200	200	10	5.7
35-39	200	200	7	3.0
40-44	200	200	7	3.0
45-49	200	200	19	11.8
50-54	100	100	-2	-1.4
55-59	100	100	6	4.5
60-64	200	200	0	0.0
65-69	100	100	2	1.5
70-74	100	100	-4	-3.3
75-79	100	100	7	6.6
80-84	100	100	-13	-10.8
85+	100	100	-11	-13.1
<b>Total</b>	<b>3,100</b>	<b>3,100</b>	<b>40</b>	<b>1.3</b>

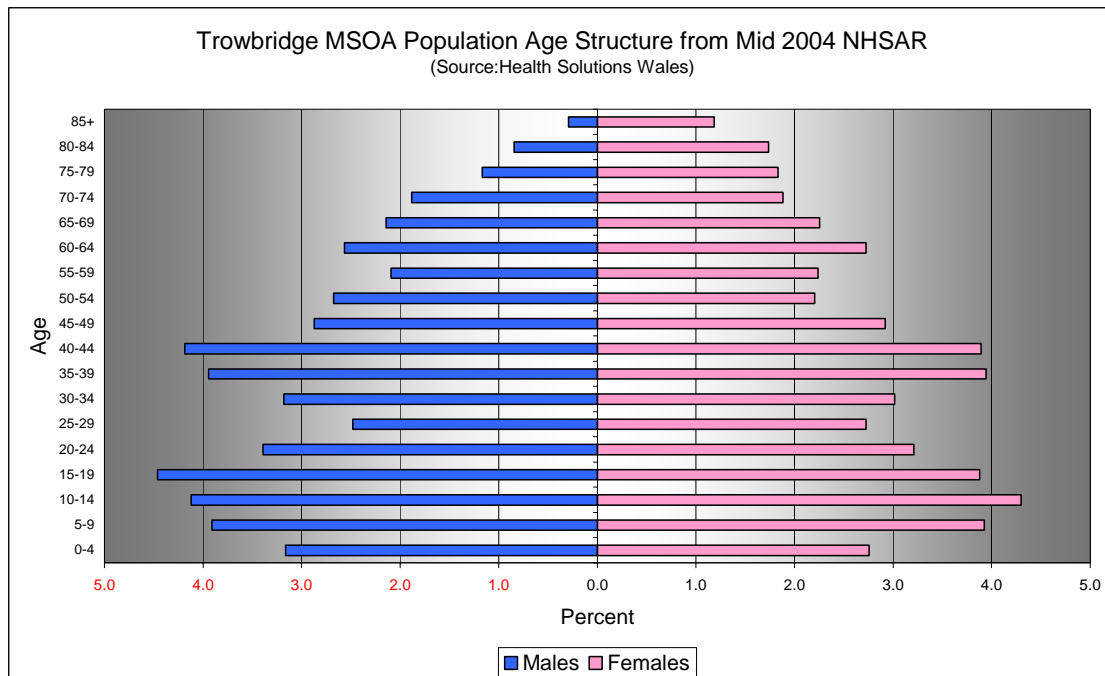
## Quinary Population Age Structure - 2004 MYE



Trowbridge MSOA Population Age Structure 2004 MYE (Source: ONS)			
Age	Males	Females	Persons
0-4	200	200	400
5-9	200	200	500
10-14	300	300	500
15-19	300	200	500
20-24	200	200	400
25-29	100	100	300
30-34	200	200	300
35-39	200	200	400
40-44	200	200	400
45-49	200	200	300
50-54	100	100	300
55-59	100	100	300
60-64	100	200	300
65-69	100	100	300
70-74	100	100	200
75-79	100	100	200
80-84	100	100	200
85+	50	100	100
<b>Total</b>	<b>2,700</b>	<b>3,100</b>	<b>5,800</b>

Trowbridge MSOA Population Age Structure 2004 MYE - Percentage of total Persons (Source: ONS)			
Age	Males	Females	Persons
0-4	3.4	3.2	6.6
5-9	4.0	4.2	8.2
10-14	4.5	4.6	9.2
15-19	4.9	3.9	8.8
20-24	2.6	3.5	6.1
25-29	2.1	2.4	4.5
30-34	2.6	3.0	5.7
35-39	3.2	4.1	7.3
40-44	3.4	4.0	7.5
45-49	2.7	2.8	5.5
50-54	2.3	2.4	4.7
55-59	2.2	2.3	4.5
60-64	2.4	2.9	5.3
65-69	2.1	2.4	4.4
70-74	2.0	2.1	4.0
75-79	1.2	1.8	3.0
80-84	0.9	2.1	3.0
85+	0.3	1.4	1.8
<b>Total</b>	<b>46.8</b>	<b>53.2</b>	<b>100.0</b>

## Quinary Population Age Structure Mid 2004 NHSAR



Trowbridge MSOA Population Age Structure - NHSAR Mid 2004 (Source: HSW)			
Age	Males	Females	Persons
0-4	200	200	400
5-9	200	200	500
10-14	300	300	500
15-19	300	200	500
20-24	200	200	400
25-29	200	200	300
30-34	200	200	400
35-39	200	200	500
40-44	300	200	500
45-49	200	200	400
50-54	200	100	300
55-59	100	100	300
60-64	200	200	300
65-69	100	100	300
70-74	100	100	200
75-79	100	100	200
80-84	100	100	200
85+	50	100	100
<b>Total</b>	<b>3,000</b>	<b>3,100</b>	<b>6,200</b>

Trowbridge MSOA Population Age Structure % of Total Persons - NHSAR Mid 2004 (Source: HSW)			
Age	Males	Females	Persons
0-4	3.2	2.8	5.9
5-9	3.9	3.9	7.8
10-14	4.1	4.3	8.4
15-19	4.5	3.9	8.3
20-24	3.4	3.2	6.6
25-29	2.5	2.7	5.2
30-34	3.2	3.0	6.2
35-39	3.9	3.9	7.9
40-44	4.2	3.9	8.1
45-49	2.9	2.9	5.8
50-54	2.7	2.2	4.9
55-59	2.1	2.2	4.3
60-64	2.6	2.7	5.3
65-69	2.1	2.3	4.4
70-74	1.9	1.9	3.8
75-79	1.2	1.8	3.0
80-84	0.8	1.7	2.6
85+	0.3	1.2	1.5
<b>Total</b>	<b>49.4</b>	<b>50.6</b>	<b>100.0</b>