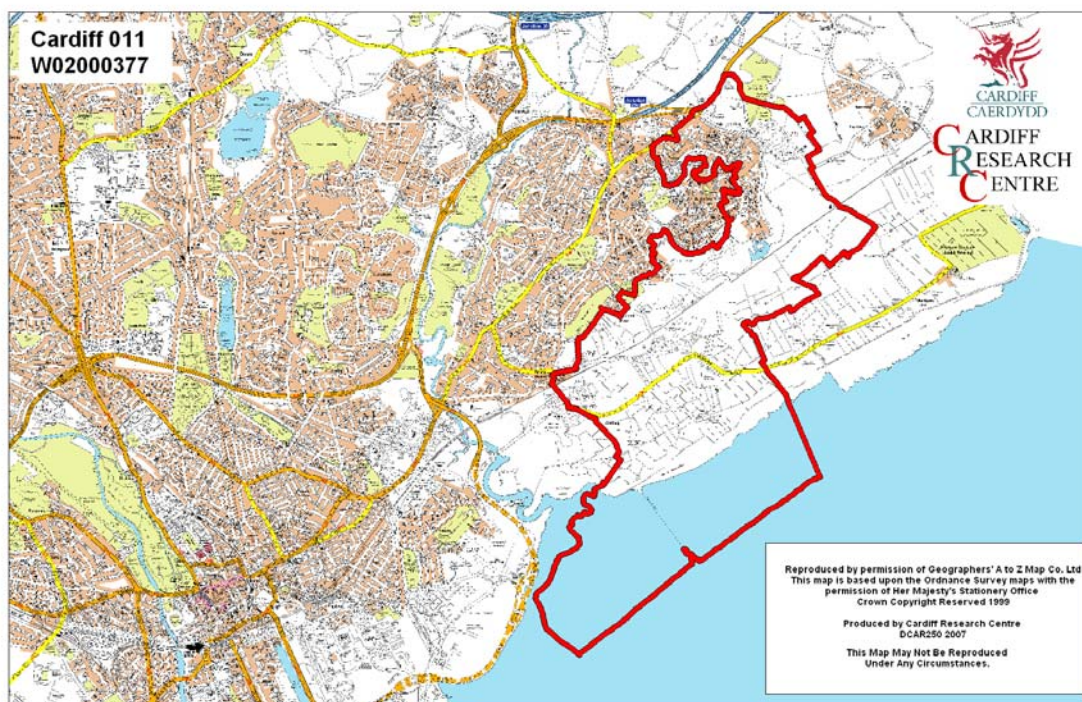


## Wentloog Middle Super Output Area

A comparison of Population Age Structure's for Mid 2004 from the National Statistics experimental Mid Year Estimate and the National Health Service Administrative Records (NHSAR)

Figure: Wentloog MSOA (Cardiff South East Locality)



**Disclosure Control:** Due to a requirement to observe the Registrar General's disclosure control protocols for experimental and official Mid Year Estimates of population it has been necessary to round population figures provided in this profile to the nearest 100 persons. Due to the danger of disclosure by difference the NHSAR population figures in this brief have also been rounded to the nearest 100 persons. For both datasets, when the population estimate was less than 50 persons, the value of 50 has been used. However, it is important to note that all graphics and the percentages presented in this profile have been produced using raw un-rounded estimates. The difference between NHSAR and MYE population estimates are also presented here in their un-rounded raw format.

## Summary Key Statistics

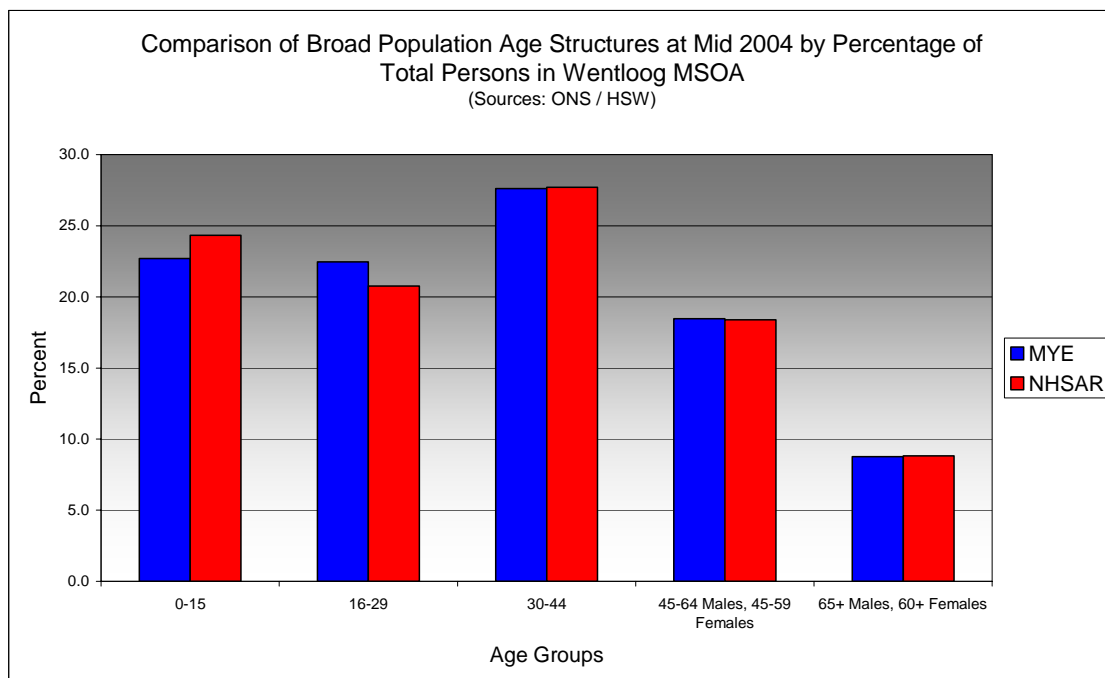
- In Wentloog total NHSAR population at Mid 2004 was 2.1% (approximately 150 persons) higher than the experimental Mid Year Estimate.
- Total male NHSAR population was 1.1% higher, while total female population was 3.2% higher than the experimental Mid Year Estimate.
- NHSAR population counts showed the greatest variance from the Experimental MYEs in the following age groups: 10 to 14 years 14.6% higher and those aged 5 to 9 years 11.2% higher. There was a significant variation in the 85+ age group, but this only relates to a very small number of persons.
- Wentloog is ranked 38<sup>th</sup> (MYE) and 34<sup>th</sup> (NHSAR) out of 47 MSOAs in Cardiff for it's total dependency ratio.
- Within the Cardiff South East Locality Wentloog is ranked 10<sup>th</sup> (MYE & NHSAR) out of 11 MSOAs for it's total dependency ratio.
- Wentloog is ranked 13<sup>th</sup> (MYE) and 12<sup>th</sup> (NHSAR) out of 47 MSOAs in Cardiff for the total number of younger dependents aged 0 to 14.
- Within it's locality Wentloog is ranked 6<sup>th</sup> (MYE & NHSAR) out of 11 MSOAs for the total number of younger dependents aged 0 to 14.
- Wentloog is ranked 44<sup>th</sup> (MYE & NHSAR) out of 47 MSOAs for the total number of older dependents aged 65 plus.
- Within it's locality Wentloog is ranked 11<sup>th</sup> (MYE) and 10<sup>th</sup> (NHSAR) out of 11 MSOAs for the total number of older dependents aged 65 plus.
- The vast majority of dependent age groups (0 to 14 + 65 and over) are younger dependents aged 0 to 14, representing 75.5% (MYE) and 76.2% (NHSAR) of total dependents.

<b>Dependency Ratios at Mid 2004 in Wentloog MSOA</b> (Sources: Derived from Data Supplied by ONS & HSW)		
	<b>MYE</b>	<b>NHSAR</b>
<b>Dependents Aged 0 - 14</b>	1,400	1,500
<b>Dependents Aged 65 Plus</b>	500	500
<b>Total Dependents</b>	1,800	2,000
<b>Persons Aged 15 to 64</b>	4,700	4,700
<b>Total Persons</b>	6,500	6,700
<b>Wentloog Dependency Ratio</b>	0.39	0.42
<b>Locality Dependency Ratio</b>	0.52	0.51
<b>Cardiff Dependency Ratio</b>	0.47	0.43
<b>Wales Dependency Ratio</b>	0.57	0.52

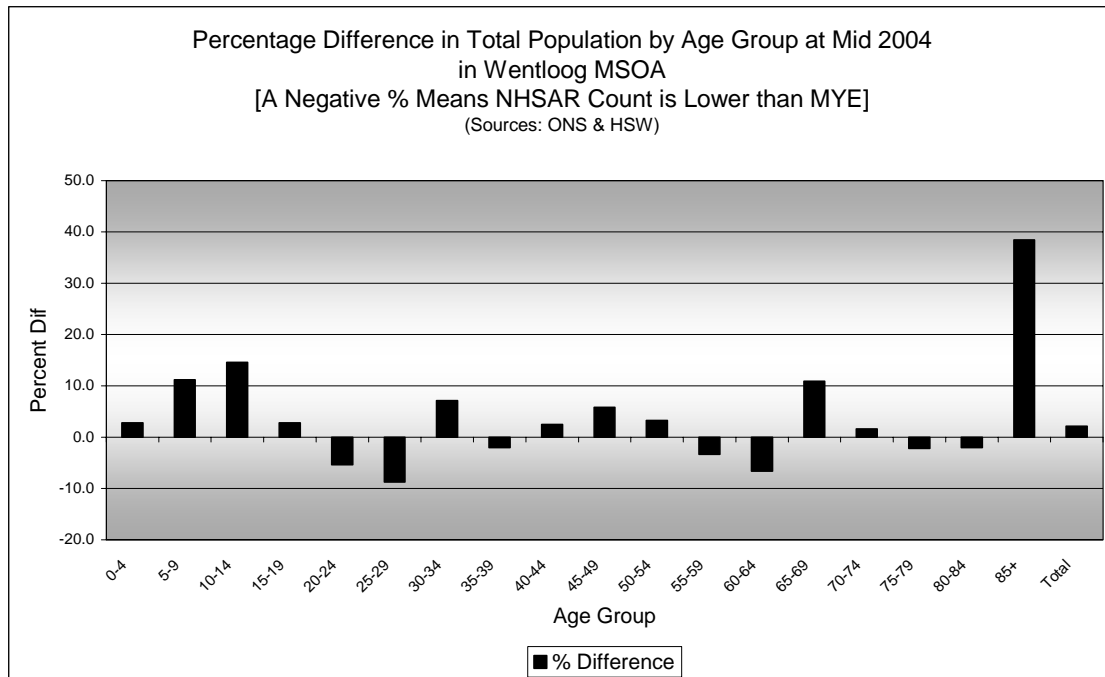
## Broad Age Group Comparisons

Comparison of Population Sources by Broad Age Group for Mid 2004 in Wentloog MSOA						
	0-15	16-29	30-44	45-64 Males, 45-59 Females	65+ Males, 60+ Females	All Ages
<b>MYE</b>	1,500	1,500	1,800	1,200	600	6,500
<b>NHSAR</b>	1,600	1,400	1,800	1,200	600	6,700
<b>Difference #</b>	140	-81	44	20	16	139
<b>Difference %</b>	9.4	-5.5	2.4	1.7	2.8	2.1

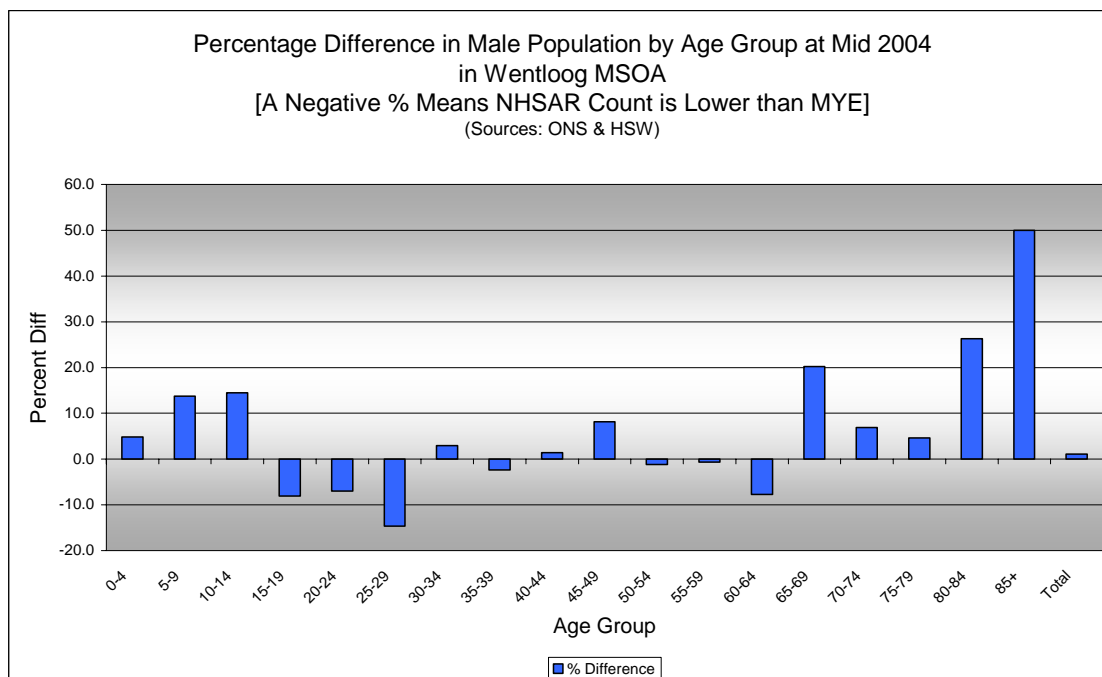
Comparison of Broad Population Age Structures for Mid 2004 by Percentage of Total Population in Wentloog MSOA						
	0-15	16-29	30-44	45-64 Males, 45-59 Females	65+ Males, 60+ Females	All Ages
<b>MYE</b>	22.7	22.5	27.6	18.5	8.8	100.0
<b>NHSAR</b>	24.3	20.8	27.7	18.4	8.8	100.0



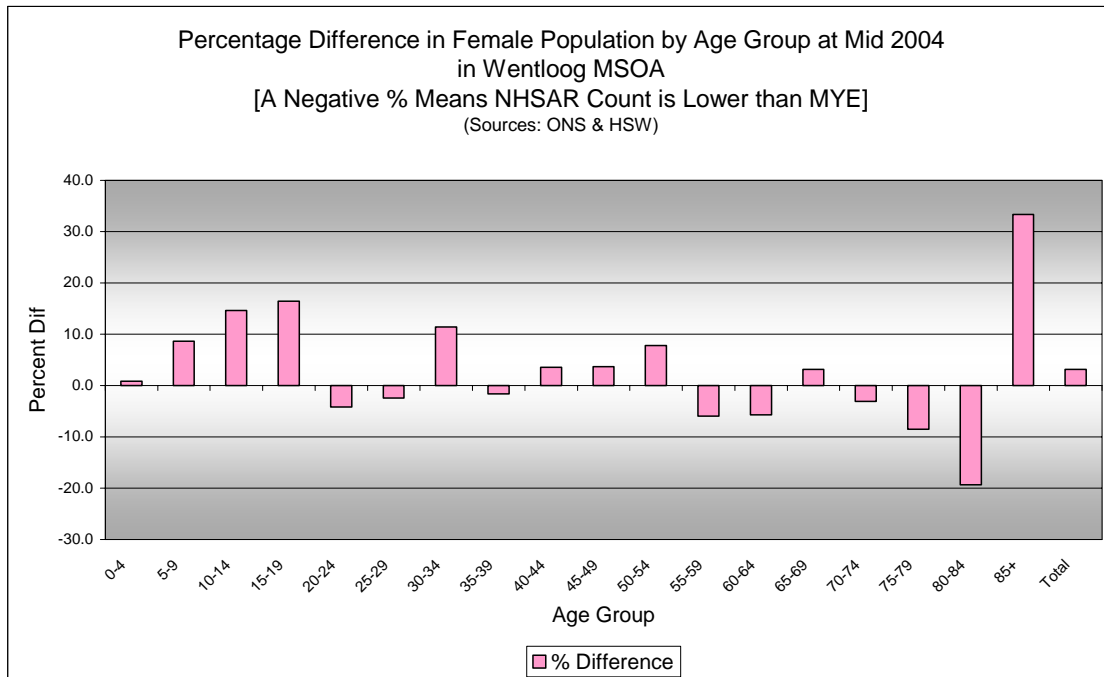
## Quinary Age Group Comparisons – 2004 NHSAR Minus MYE



Age	Persons (MYE)	Persons (NHSAR)	# Difference	% Difference
0-4	500	500	13	2.8
5-9	500	500	52	11.2
10-14	500	50	66	14.6
15-19	400	400	12	2.8
20-24	500	400	-25	-5.4
25-29	700	600	-59	-8.7
30-34	600	600	43	7.1
35-39	600	600	-13	-2.0
40-44	600	600	14	2.5
45-49	500	500	27	5.8
50-54	300	400	11	3.2
55-59	300	300	-10	-3.3
60-64	200	200	-15	-6.6
65-69	200	200	19	10.9
70-74	100	100	2	1.6
75-79	100	100	-2	-2.2
80-84	100	50	-1	-2.0
85+	50	50	5	38.5
<b>Total</b>	<b>6,500</b>	<b>6,700</b>	<b>139</b>	<b>2.1</b>

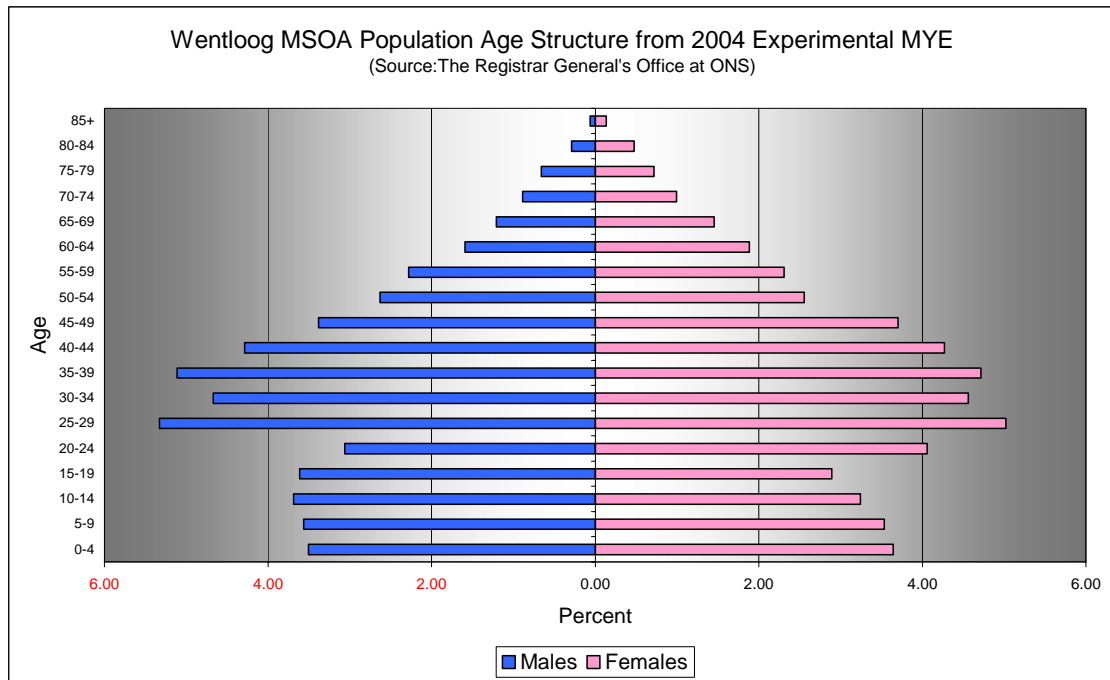


<b>Comparison of Male Population by Age Group at Mid 2004 in Wentloog MSOA</b> [Difference = NHSAR Minus MYE] (Sources: ONS & HSW)				
Age	Males (MYE)	Males (NHSAR)	# Difference	% Difference
0-4	200	200	11	4.8
5-9	200	300	32	13.7
10-14	200	300	35	14.5
15-19	200	200	-19	-8.1
20-24	200	200	-14	-7.0
25-29	300	300	-51	-14.7
30-34	300	300	9	3.0
35-39	300	300	-8	-2.4
40-44	300	300	4	1.4
45-49	200	200	18	8.1
50-54	200	200	-2	-1.2
55-59	100	100	-1	-0.7
60-64	100	100	-8	-7.7
65-69	100	100	16	20.3
70-74	100	100	4	6.9
75-79	50	50	2	4.7
80-84	50	50	5	26.3
85+	50	50	2	50.0
<b>Total</b>	<b>3,300</b>	<b>3,300</b>	<b>35</b>	<b>1.1</b>



<b>Comparison of Female Population by Age Group at Mid 2004 in Wentlog MSOA</b> [Difference = NHSAR Minus MYE] (Sources: ONS & HSW)				
Age	Females (MYE)	Females (NHSAR)	# Difference	% Difference
0-4	200	200	2	0.8
5-9	200	300	20	8.7
10-14	200	200	31	14.6
15-19	200	200	31	16.4
20-24	300	300	-11	-4.2
25-29	300	300	-8	-2.4
30-34	300	300	34	11.4
35-39	300	300	-5	-1.6
40-44	300	300	10	3.6
45-49	200	300	9	3.7
50-54	100	200	13	7.8
55-59	100	100	-9	-6.0
60-64	100	100	-7	-5.7
65-69	100	100	3	3.2
70-74	100	100	-2	-3.1
75-79	50	50	-4	-8.5
80-84	50	50	-6	-19.4
85+	50	50	3	33.3
<b>Total</b>	<b>3,300</b>	<b>3,400</b>	<b>104</b>	<b>3.2</b>

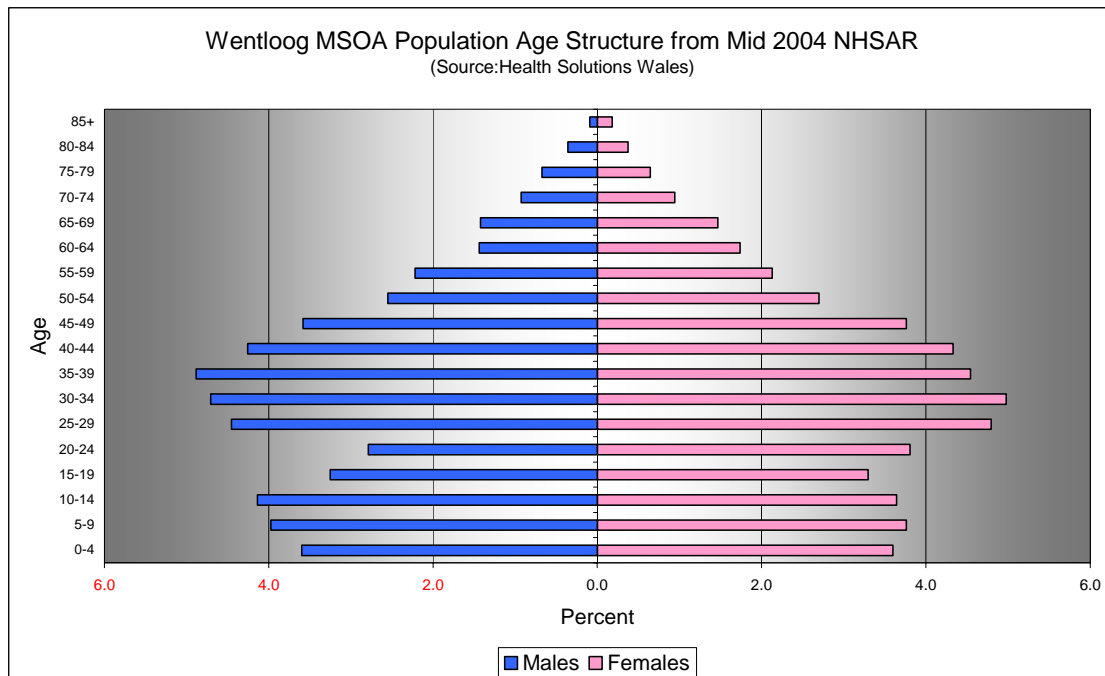
## Quinary Population Age Structure - 2004 MYE



Wentloog MSOA Population Age Structure 2004 MYE (Source: ONS)			
Age	Males	Females	Persons
0-4	200	200	500
5-9	200	200	500
10-14	200	200	500
15-19	200	200	400
20-24	200	300	500
25-29	300	300	700
30-34	300	300	600
35-39	300	300	600
40-44	300	300	600
45-49	200	200	500
50-54	200	100	300
55-59	100	100	300
60-64	100	100	200
65-69	100	100	200
70-74	100	100	100
75-79	50	50	100
80-84	50	50	100
85+	50	50	50
<b>Total</b>	<b>3,300</b>	<b>3,300</b>	<b>6,500</b>

Wentloog MSOA Population Age Structure 2004 MYE - Percentage of total Persons (Source: ONS)			
Age	Males	Females	Persons
0-4	3.5	3.6	7.1
5-9	3.6	3.5	7.1
10-14	3.7	3.2	6.9
15-19	3.6	2.9	6.5
20-24	3.1	4.1	7.1
25-29	5.3	5.0	10.3
30-34	4.7	4.6	9.2
35-39	5.1	4.7	9.8
40-44	4.3	4.3	8.6
45-49	3.4	3.7	7.1
50-54	2.6	2.6	5.2
55-59	2.3	2.3	4.6
60-64	1.6	1.9	3.5
65-69	1.2	1.5	2.7
70-74	0.9	1.0	1.9
75-79	0.7	0.7	1.4
80-84	0.3	0.5	0.8
85+	0.1	0.1	0.2
<b>Total</b>	<b>49.8</b>	<b>50.2</b>	<b>100.0</b>

## Quinary Population Age Structure Mid 2004 NHSAR



Wentloog MSOA Population Age Structure - NHSAR Mid 2004 (Source: HSW)			
Age	Males	Females	Persons
0-4	200	200	500
5-9	300	300	500
10-14	300	200	500
15-19	200	200	400
20-24	200	300	400
25-29	300	300	600
30-34	300	300	600
35-39	300	300	600
40-44	300	300	600
45-49	200	300	500
50-54	200	200	400
55-59	100	100	300
60-64	100	100	200
65-69	100	100	200
70-74	100	100	100
75-79	50	50	100
80-84	50	50	50
85+	50	50	50
<b>Total</b>	<b>3,300</b>	<b>3,400</b>	<b>6,700</b>

Wentloog MSOA Population Age Structure % of Total Persons - NHSAR Mid 2004 (Source: HSW)			
Age	Males	Females	Persons
0-4	3.6	3.6	7.2
5-9	4.0	3.8	7.7
10-14	4.1	3.6	7.8
15-19	3.3	3.3	6.5
20-24	2.8	3.8	6.6
25-29	4.5	4.8	9.2
30-34	4.7	5.0	9.7
35-39	4.9	4.5	9.4
40-44	4.3	4.3	8.6
45-49	3.6	3.8	7.3
50-54	2.5	2.7	5.2
55-59	2.2	2.1	4.3
60-64	1.4	1.7	3.2
65-69	1.4	1.5	2.9
70-74	0.9	0.9	1.9
75-79	0.7	0.6	1.3
80-84	0.4	0.4	0.7
85+	0.1	0.2	0.3
<b>Total</b>	<b>49.3</b>	<b>50.7</b>	<b>100.0</b>