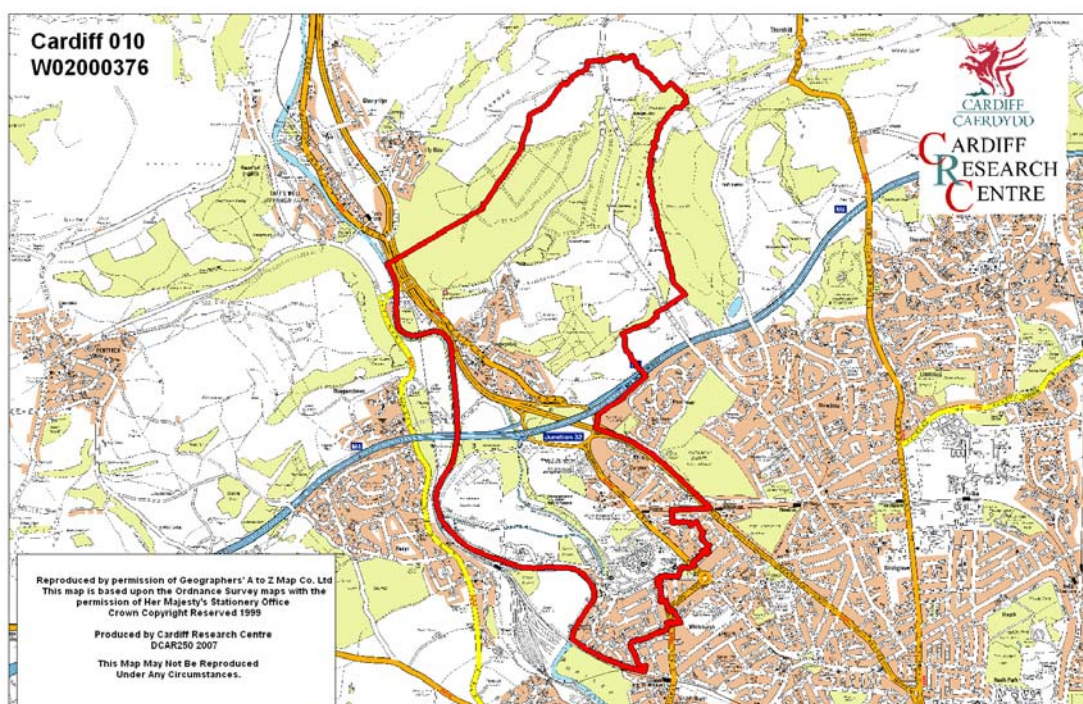


Whitchurch Middle Super Output Area

A comparison of Population Age Structure's for Mid 2004 from the National Statistics experimental Mid Year Estimate and the National Health Service Administrative Records (NHSAR)

Figure: Whitchurch MSOA (Cardiff North Locality)



Disclosure Control: Due to a requirement to observe the Registrar General's disclosure control protocols for experimental and official Mid Year Estimates of population it has been necessary to round population figures provided in this profile to the nearest 100 persons. Due to the danger of disclosure by difference the NHSAR population figures in this brief have also been rounded to the nearest 100 persons. For both datasets, when the population estimate was less than 50 persons, the value of 50 has been used. However, it is important to note that all graphics and the percentages presented in this profile have been produced using raw un-rounded estimates. The difference between NHSAR and MYE population estimates are also presented here in their un-rounded raw format.

Summary Key Statistics

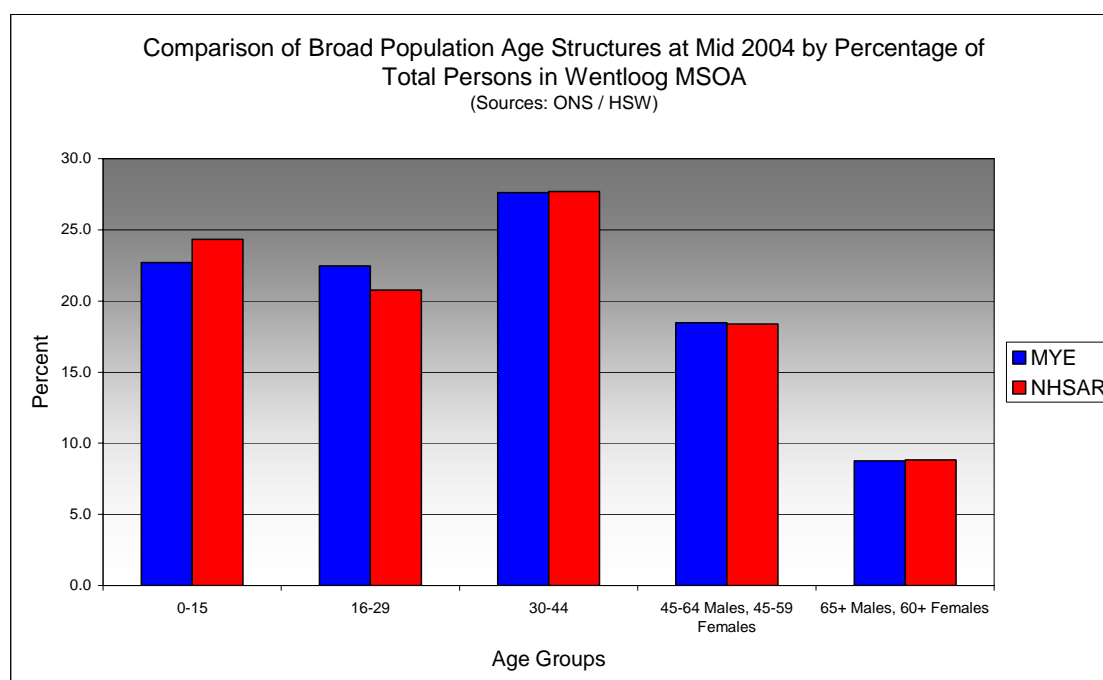
- In Whitchurch total NHSAR population at Mid 2004 was 1.0% (approximately 100 persons) higher than the experimental Mid Year Estimate.
- Total male NHSAR population was 1.4% higher, while total female population was 0.5% higher than the experimental Mid Year Estimate.
- NHSAR population counts showed the greatest variance from the Experimental MYEs in the following age groups: 20 to 24 years 18.9% higher and those aged 25 to 29 years 15.9% higher.
- Whitchurch is ranked 16th (MYE) and 18th (NHSAR) out of 47 MSOAs in Cardiff for it's total dependency ratio.
- Within the Cardiff North Locality Whitchurch is ranked 6th (MYE & NHSAR) out of 12 MSOAs for it's total dependency ratio.
- Whitchurch is ranked 24th (MYE) and 31st (NHSAR) out of 47 MSOAs in Cardiff for the total number of younger dependents aged 0 to 14.
- Within it's locality Whitchurch is ranked 6th (MYE & NHSAR) out of 12 MSOAs for the total number of younger dependents aged 0 to 14.
- Whitchurch is ranked 12th (MYE) and 14th (NHSAR) out of 47 MSOAs for the total number of older dependents aged 65 plus.
- Within it's locality Whitchurch is ranked 6th (MYE) and 7th (NHSAR) out of 12 MSOAs for the total number of older dependents aged 65 plus.
- The slightest majority of dependent age groups (0 to 14 + 65 and over) are younger dependents aged 0 to 14, representing 50.3% (MYE) meanwhile exactly 50.0% of NHSAR total dependents are aged 0 to 14.

Dependency Ratios at Mid 2004 in Whitchurch MSOA (Sources: Derived from Data Supplied by ONS & HSW)		
	MYE	NHSAR
Dependents Aged 0 - 14	1,200	1,100
Dependents Aged 65 Plus	1,200	1,100
Total Dependents	2,400	2,300
Persons Aged 15 to 64	4,200	4,400
Total Persons	6,600	6,700
Whitchurch Dependency Ratio	0.57	0.52
Locality Dependency Ratio	0.52	0.48
Cardiff Dependency Ratio	0.47	0.43
Wales Dependency Ratio	0.57	0.52

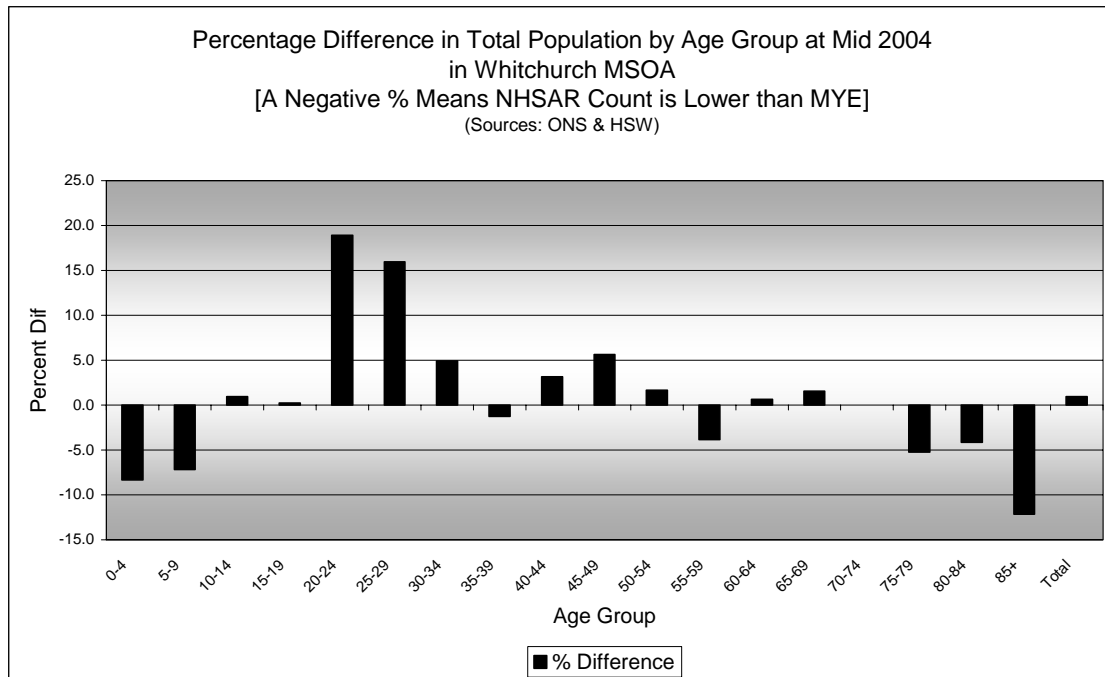
Broad Age Group Comparisons

Comparison of Population Sources by Broad Age Group for Mid 2004 in Whitchurch MSOA						
	0-15	16-29	30-44	45-64 Males, 45-59 Females	65+ Males, 60+ Females	All Ages
MYE	1,300	1,000	1,500	1,500	1,300	6,600
NHSAR	1,200	1,100	1,500	1,500	1,300	6,700
Difference #	-51	105	31	16	-38	63
Difference %	-3.9	10.9	2.1	1.1	-2.8	1.0

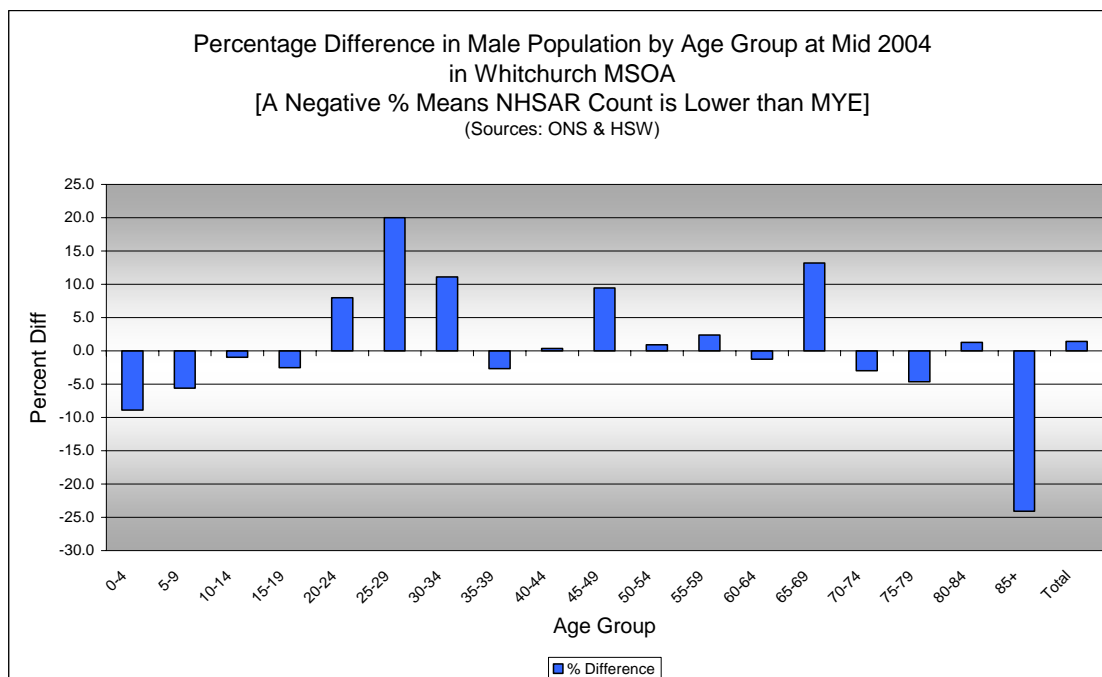
Comparison of Broad Population Age Structures for Mid 2004 by Percentage of Total Population in Whitchurch MSOA						
	0-15	16-29	30-44	45-64 Males, 45-59 Females	65+ Males, 60+ Females	All Ages
MYE	19.5	14.5	22.8	22.9	20.3	100.0
NHSAR	18.6	15.9	23.1	22.9	19.5	100.0



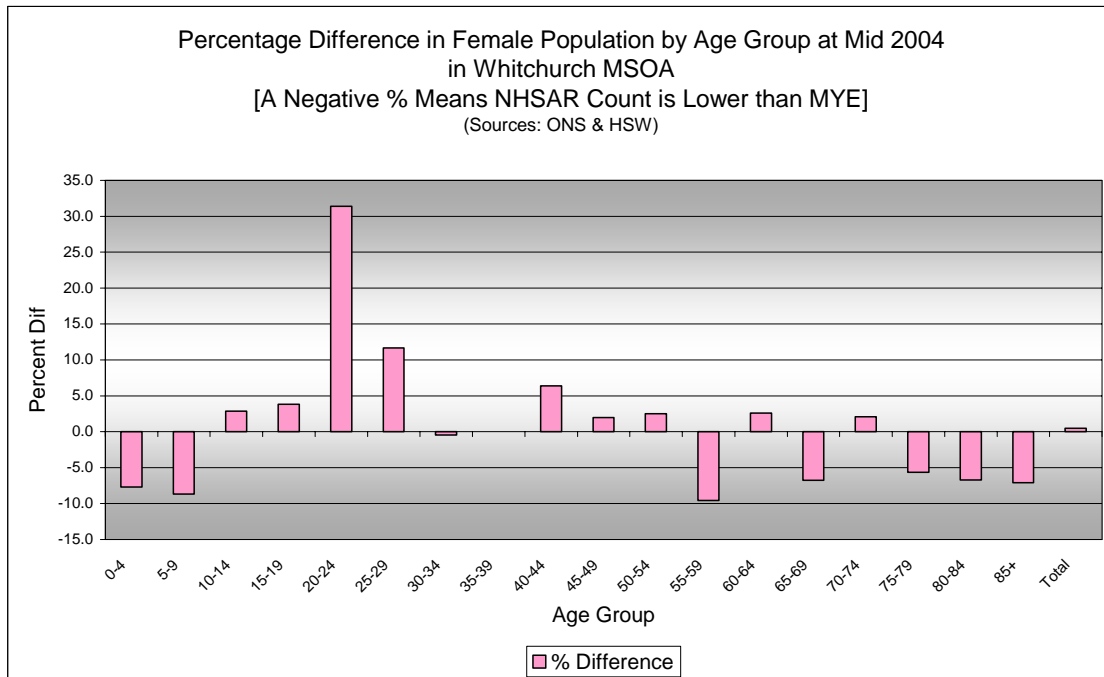
Quinary Age Group Comparisons – 2004 NHSAR Minus MYE



Comparison of Total Population by Age Group at Mid 2004 in Whitchurch MSOA [Difference = NHSAR Minus MYE] (Sources: ONS & HSW)				
Age	Persons (MYE)	Persons (NHSAR)	# Difference	% Difference
0-4	400	400	-32	-8.3
5-9	400	400	-29	-7.2
10-14	400	400	4	1.0
15-19	400	400	1	0.2
20-24	300	400	62	18.9
25-29	300	300	48	15.9
30-34	400	400	21	4.9
35-39	600	500	-7	-1.3
40-44	500	600	17	3.2
45-49	500	500	28	5.6
50-54	400	400	7	1.7
55-59	400	400	-17	-3.9
60-64	300	300	2	0.6
65-69	300	300	4	1.6
70-74	200	200	0	0.0
75-79	300	300	-14	-5.2
80-84	200	200	-10	-4.1
85+	200	200	-22	-12.2
Total	6,600	6,700	63	1.0

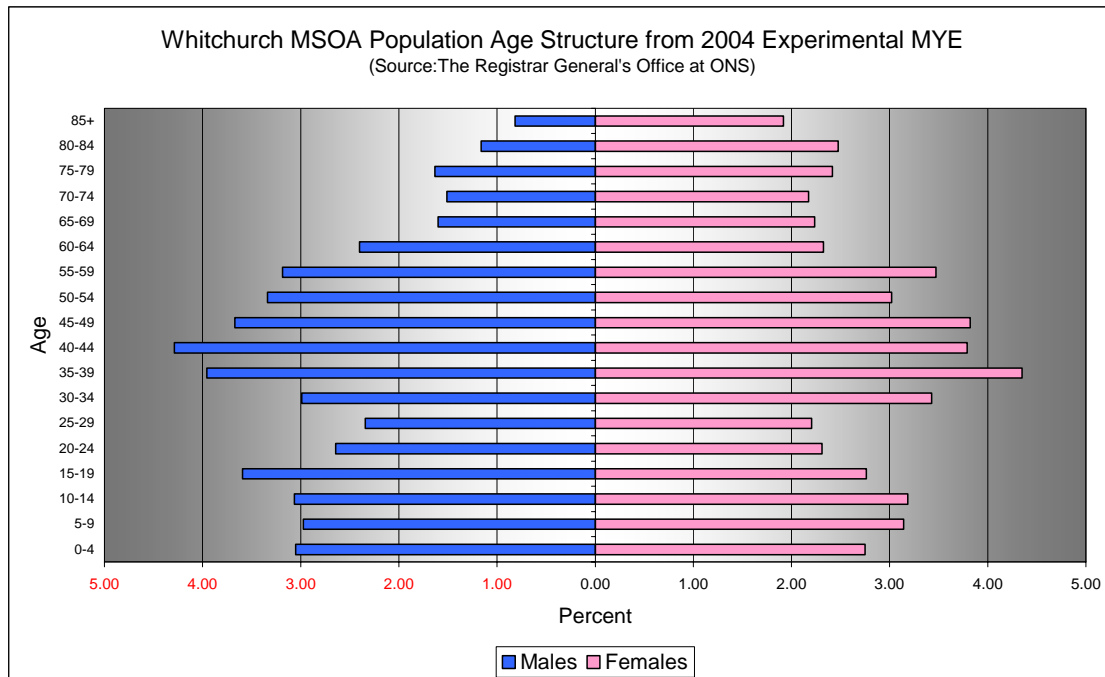


Comparison of Male Population by Age Group at Mid 2004 in Whitchurch MSOA [Difference = NHSAR Minus MYE] (Sources: ONS & HSW)				
Age	Males (MYE)	Males (NHSAR)	# Difference	% Difference
0-4	200	200	-18	-8.9
5-9	200	200	-11	-5.6
10-14	200	200	-2	-1.0
15-19	200	200	-6	-2.5
20-24	200	200	14	8.0
25-29	200	200	31	20.0
30-34	200	200	22	11.1
35-39	300	300	-7	-2.7
40-44	300	300	1	0.4
45-49	200	300	23	9.5
50-54	200	200	2	0.9
55-59	200	200	5	2.4
60-64	200	200	-2	-1.3
65-69	100	100	14	13.2
70-74	100	100	-3	-3.0
75-79	100	100	-5	-4.6
80-84	100	100	1	1.3
85+	100	50	-13	-24.1
Total	3,200	3,200	46	1.4



Comparison of Female Population by Age Group at Mid 2004 in Whitchurch MSOA [Difference = NHSAR Minus MYE] (Sources: ONS & HSW)				
Age	Females (MYE)	Females (NHSAR)	# Difference	% Difference
0-4	200	200	-14	-7.7
5-9	200	200	-18	-8.7
10-14	200	200	6	2.8
15-19	200	200	7	3.8
20-24	200	200	48	31.4
25-29	100	200	17	11.6
30-34	200	200	-1	-0.4
35-39	300	300	0	0.0
40-44	300	300	16	6.4
45-49	300	300	5	2.0
50-54	200	200	5	2.5
55-59	200	200	-22	-9.6
60-64	200	200	4	2.6
65-69	100	100	-10	-6.8
70-74	100	100	3	2.1
75-79	200	200	-9	-5.6
80-84	200	200	-11	-6.7
85+	100	100	-9	-7.1
Total	3,400	3,400	17	0.5

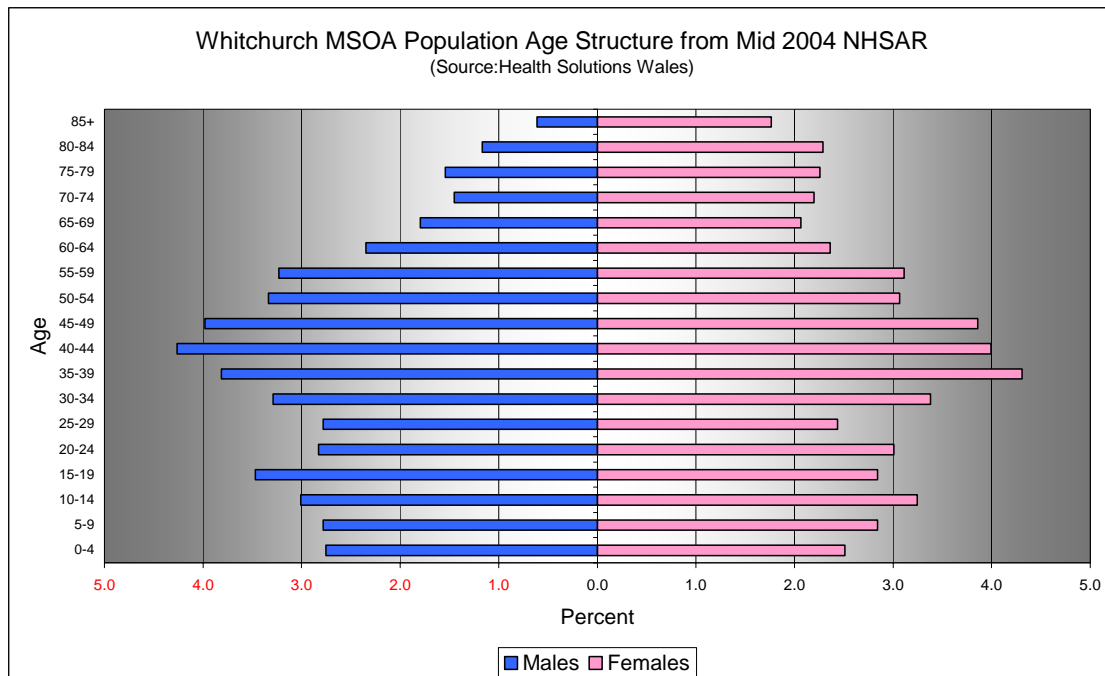
Quinary Population Age Structure - 2004 MYE



Whitchurch MSOA Population Age Structure 2004 MYE (Source: ONS)			
Age	Males	Females	Persons
0-4	200	200	400
5-9	200	200	400
10-14	200	200	400
15-19	200	200	400
20-24	200	200	300
25-29	200	100	300
30-34	200	200	400
35-39	300	300	600
40-44	300	300	500
45-49	200	300	500
50-54	200	200	400
55-59	200	200	400
60-64	200	200	300
65-69	100	100	300
70-74	100	100	200
75-79	100	200	300
80-84	100	200	200
85+	100	100	200
Total	3,200	3,400	6,600

Whitchurch MSOA Population Age Structure 2004 MYE - Percentage of total Persons (Source: ONS)			
Age	Males	Females	Persons
0-4	3.1	2.7	5.8
5-9	3.0	3.1	6.1
10-14	3.1	3.2	6.3
15-19	3.6	2.8	6.4
20-24	2.6	2.3	5.0
25-29	2.3	2.2	4.5
30-34	3.0	3.4	6.4
35-39	4.0	4.3	8.3
40-44	4.3	3.8	8.1
45-49	3.7	3.8	7.5
50-54	3.3	3.0	6.4
55-59	3.2	3.5	6.7
60-64	2.4	2.3	4.7
65-69	1.6	2.2	3.8
70-74	1.5	2.2	3.7
75-79	1.6	2.4	4.0
80-84	1.2	2.5	3.6
85+	0.8	1.9	2.7
Total	48.2	51.8	100.0

Quinary Population Age Structure Mid 2004 NHSAR



Whitchurch MSOA Population Age Structure - NHSAR Mid 2004 (Source: HSW)			
Age	Males	Females	Persons
0-4	200	200	400
5-9	200	200	400
10-14	200	200	400
15-19	200	200	400
20-24	200	200	400
25-29	200	200	300
30-34	200	200	400
35-39	300	300	500
40-44	300	300	600
45-49	300	300	500
50-54	200	200	400
55-59	200	200	400
60-64	200	200	300
65-69	100	100	300
70-74	100	100	200
75-79	100	200	300
80-84	100	200	200
85+	50	100	200
Total	3,200	3,400	6,700

Whitchurch MSOA Population Age Structure % of Total Persons - NHSAR Mid 2004 (Source: HSW)			
Age	Males	Females	Persons
0-4	2.8	2.5	5.3
5-9	2.8	2.8	5.6
10-14	3.0	3.2	6.3
15-19	3.5	2.8	6.3
20-24	2.8	3.0	5.8
25-29	2.8	2.4	5.2
30-34	3.3	3.4	6.7
35-39	3.8	4.3	8.1
40-44	4.3	4.0	8.3
45-49	4.0	3.9	7.8
50-54	3.3	3.1	6.4
55-59	3.2	3.1	6.3
60-64	2.3	2.4	4.7
65-69	1.8	2.1	3.9
70-74	1.5	2.2	3.6
75-79	1.5	2.3	3.8
80-84	1.2	2.3	3.5
85+	0.6	1.8	2.4
Total	48.5	51.5	100.0