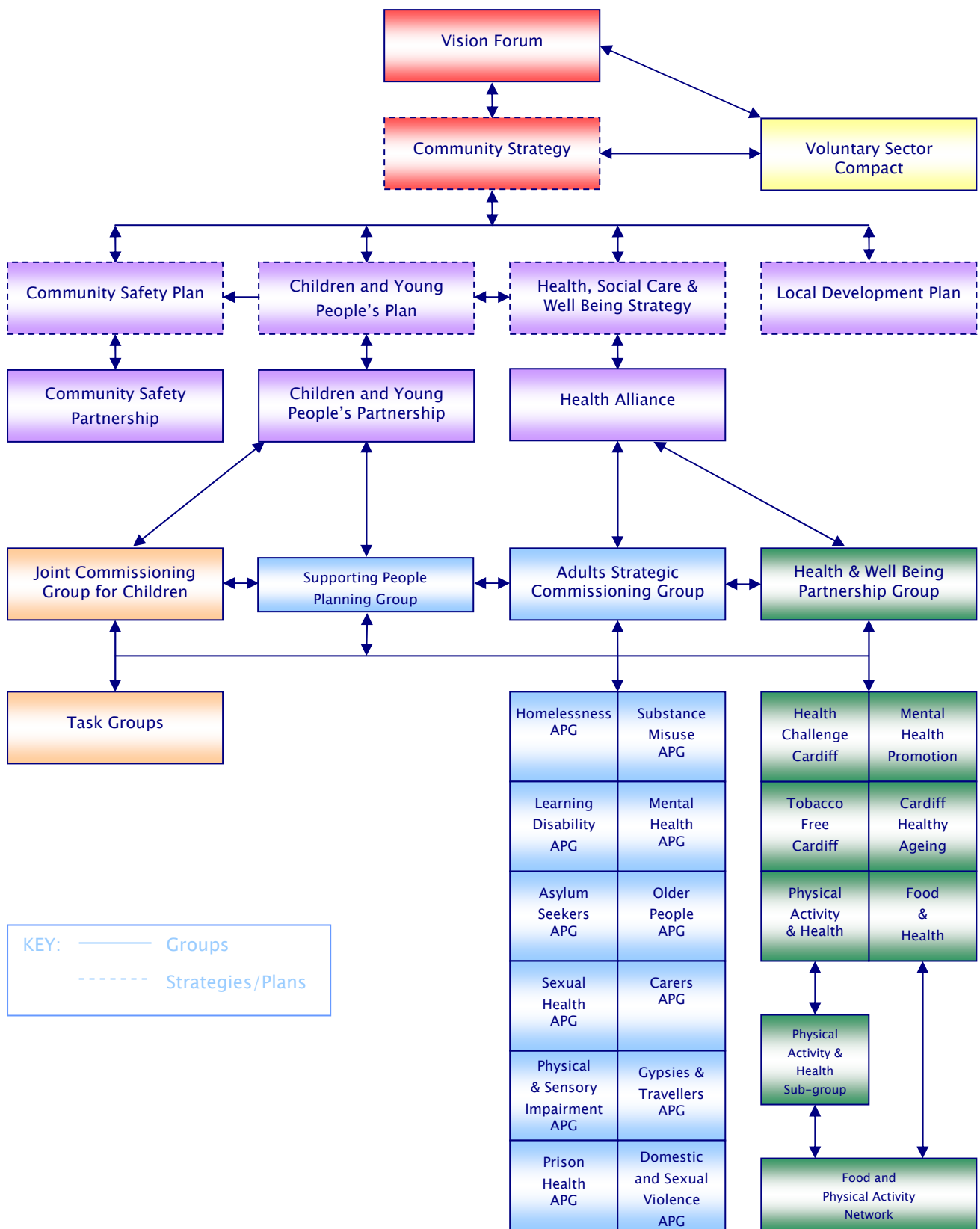


# CARDIFF HEALTH ALLIANCE PARTNERSHIP STRUCTURES



Vision Forum

Community Strategy

Voluntary Sector Compact

Community Safety Plan

Children and Young People's Plan

Health, Social Care & Well Being Strategy

Local Development Plan

Community Safety Partnership

Children and Young People's Partnership

Health Alliance

Joint Commissioning Group for Children

Supporting People Planning Group

Adults Strategic Commissioning Group

Health & Well Being Partnership Group

Task Groups

|                                   |                                  |
|-----------------------------------|----------------------------------|
| Homelessness APG                  | Substance Misuse APG             |
| Learning Disability APG           | Mental Health APG                |
| Asylum Seekers APG                | Older People APG                 |
| Sexual Health APG                 | Carers APG                       |
| Physical & Sensory Impairment APG | Gypsies & Travellers APG         |
| Prison Health APG                 | Domestic and Sexual Violence APG |

|                            |                         |
|----------------------------|-------------------------|
| Health Challenge Cardiff   | Mental Health Promotion |
| Tobacco Free Cardiff       | Cardiff Healthy Ageing  |
| Physical Activity & Health | Food & Health           |

Physical Activity & Health Sub-group

Food and Physical Activity Network

## **Vision Forum**

The Proud Capital Vision Forum is Cardiff's Local Strategic Partnership and was established in October 2006. It brings together the key senior members of public, voluntary and private sector organisations from across the capital to identify a long term vision for the area and to initiate joint projects that promote the economic, social and environmental well being of those who live and work within the city and the wider region.

## **Cardiff's Four Key Strategies**

The Cardiff Community Strategy, the Children and Young People Plan (C&YPP), the Health Social Care and Well Being Strategy (HSC&WBS) and the Local Development Plan (LDP) are the four key strategies for Cardiff and give strategic direct to work and other documents across the city.

## **Cardiff Health Alliance**

The Health Alliance is the key strategic health and social care partnership in Cardiff with local authority, health services and voluntary sector membership. Established in 2000, the initial focus was to consider factors which contribute to health, health gain and reducing inequalities in health. Over time, the Health Alliance widened its scope to include health and social care services in response to WAG policies and initiatives, in particular the responsibility to develop and implement a Health, Social Care and Well Being Strategy on behalf of the Council and LHB. Consequently, the Alliance now provides the forum for strategic liaison between partner organisations on a range of health, social care and well being issues.

## **Health & Well Being Partnership Group**

The Health & Well Being Partnership Group (HWBP) ensures that the well being elements of the Cardiff Health, Social Care & Well Being Strategy are developed, implemented and monitored in line with the agreed objectives of the commissioning authorities. The HWBP directs, guides and monitors the work of the Well Being Task Groups and ensures that all strategies, which fall within the Task Groups, are consistent, co-ordinated and have transparent links.

## **Well Being Task Groups**

As part of the work of the Health Alliance a range of multi-agency well being task groups have been established to take forward specific areas of work. Each task group is guided by a Steering Group consisting of representatives from key organisations, with the Chair of each sitting on the Health Challenge Cardiff Steering Group.

## **Strategic Commissioning Group**

The SCG is a multi-agency forum of representatives involved with the planning of health and social care services for adults in Cardiff. The SCG inform joint planning across health and social care and ensures that the Health Social Care & Well Being Strategy is developed, implemented and monitored in line with the agreed objectives of the commissioning authorities.

## **Advisory Planning Groups**

The SCG provides the leadership and direction to a range of Advisory Planning Groups (APGs). The Chairs of the APGs are constituent members of the SCG. These multi-agency groups each focus on a specific client group. The role of each APG is to ensure the efficient and effective joint planning of agreed health and social care services for relevant service user groups, as expressed within the Health, Social Care & Well Being Strategy.

## **Voluntary Sector**

There are an estimated 2500 voluntary organisations in Cardiff (national, regional and local). Of these, 1334 have an interest in health, social care and well being, working with children and families, young people, older people and communities. Of these 457 are national organisations, 142 are regional and 735 are local organisations.